

**MISSION DATA CARD**

OPORD		Callsign		Mission		Date/Time		
3524/2025		Nazgul 6		Training		092000JAN25		
Task	Toss Training					Freq		
AO	Student Gap					262.45		
Departure				Recovery				
DREAM FOUR				RAMMM				
#	Callsign		Pilot		IFF	TCN	LSR	NET
-1	Nazgul 6-1		Striver/Lempo		1161	1Y	1561	
-2	Nazgul 6-2		Tank		1162	64Y	1562	
-3	Nazgul 6-3		Razorback		1163	64X	1563	

**LOADOUT**

A/A	2xA120C, 2xA9M				GUN	100% SAPHEI
A/G	4xM84				CHF	120
POD	TGT, NAV				FLR	60
TKS	2xFT610				FUEL	100%

**TOLD**

	Takeoff	Target	Joker	Bingo	Land
FUEL	30518				

**AIRBASES**

	Name	TCN	ATIS	GND	TWR	RWY	Elev	ILS
Dep	Nellis AFB	12X	270.1	275.8	327.0	21L	1850	109.1
Arr	Nellis AFB	12X	270.1	275.8	327.0	21L	1850	109.1

**FLIGHTPLAN**

#	Name	Navaid/Coords/DME	ALT	TOT
1	HEREM	N36 22.521 W114 52.306	8000	
2	JUNNO	BLD 346/44 (N36 43.800 W114 52.770)	17000	
3	IP	N37 17.500 W114 57	5000	
4	TGT	N37 53.316 W114 43.744	4704	
5	Egress	N37 55 W114 55	5800	
6	RAMMM	LSV 024/38 (N36 45 W114 33.330)	13000	
7	APEX	LSV 027/09 (N36 21.580 W114 54.340)	4500	

## NOTES

Dream Four departure -> JUNNO

1 nm trail

BASELINE: 500FT AGL, 550KTS IAS

@5NM ACTION POINT 30 DEG OFFSET LEFT

PUP ANGLE 40 DEG

PULLDOWN ALT 7000FT AGL

APEX ALT 9000FT AGL

-> REL ANGLE 20-25 DEG

REL ALT 4000FT AGL (MK84 FRAG PATTERN ~3000FT AGL)

Anschließend zweiter Versuch mit TOSS

**OTHER FLIGHTS**

Callsign	Mission	Airframe	Freq	TCN	Grpld	Laser
Raptor 1	Training	2x F-16C	134.0	1/64		162X
AO	South of Vegas	Task	CAP/Intercept/Air Policing			
Edelweiss 5	Training	2x F/A-18C	264.55	12/75	1	175X
AO	Range 64c	Task	LCR-Check Testflight			
Raptor 2	Training	2x F-16C	134.5	1/64		162X
AO	South of Vegas	Task	CAP/Intercept/Air Policing			
Monster 1	Training	2x A-10C	132.15	1/64	21	161X
AO	R65	Task	GUN			

**RADIO CHANNELS**

#	Freq	Name
1		Flight/Squadron specific
2	289.4	Nellis Clearance Delivery
3	275.8	Nellis Ground
4	327.0	Nellis Tower
5	385.4	Nellis Approach/Departure West
6	273.55	Nellis Approach/Departure East
7	317.525	Nellis Control -- Sally
8	254.4	Nellis Control-- Lee
9	305.6	SOF Bullseye
10	343.725	EMERGENCY SINGLE FRQ
11	270.1	Nellis ATIS
12	360.625	Creech AFB Tower
13	250.1	HAVE QUICK 13
14	251.1	HAVE QUICK 14
15	252.1	HAVE QUICK 15
16	377.8	Blackjack
17	265.0	KC-135 AR-641A
18	360.8	KC-135MPRS AR-635
19	319.8	KC-135MPRS AR-625
20	300.05	KC-135 AR-231V

**RAMROD**

0	1	2	3	4	5	6	7	8	9
H	Y	S	T	E	R	I	C	A	L

**KTC 1400 C**

	0	1	2	3	4	5	6	7	8	9
A	XJBD	PVH	YMG	AC	QL	NUS	ER	WI	TF	KO
B	RAVN	XGC	DLQ	MW	FU	POS	KE	JB	HT	YI
C	GEYH	OAP	FDU	TK	SL	BQM	RJ	IN	CX	WV
D	CWBV	IKP	HJL	TR	DX	FEU	YO	SG	NM	AQ
E	OPJM	FEL	VQK	NG	UR	DAX	YB	ST	HI	WC
F	OEXV	TDS	QLJ	IN	KY	PRW	GC	MU	BH	AF
G	EBOY	TVJ	AHD	CL	WS	RGK	IU	PF	QM	NX
H	IOLP	TMH	FNR	QJ	UK	YXS	CG	BW	ED	AV
I	DOVK	RXC	TWP	UB	AH	QLS	JN	IF	ME	YG
J	LUBS	KRF	OGH	XI	QJ	NVY	ME	PD	TC	WA
K	IKNG	AJU	BXY	QW	DE	OVF	MH	SR	LC	TP
L	KTDH	JCQ	IXV	FS	GN	YME	WB	RO	UP	LA
M	MSGV	OUA	PBJ	YT	KW	RED	XC	IH	FN	QL
N	ILFA	JTC	PMS	UE	XR	HWQ	BD	OY	NG	KV
O	EVNG	TIM	KXU	AO	WD	BLP	SF	CJ	HY	QR
P	IROT	LAV	HSY	WX	BP	KNM	UD	JQ	FG	EC
Q	VNUI	SKL	QFT	WC	OB	ARJ	DX	PH	EG	MY
R	VHEM	DPW	YIB	FN	OC	JUA	XL	SK	RT	QG
S	YCMO	VHP	DLT	WB	RK	JFE	GA	QS	NX	UI
T	OWIE	CXR	UAY	JD	LN	VQK	PF	TM	HB	SG
U	DIUG	REJ	AXC	HS	WM	OFP	NQ	BY	VL	TK
V	ENUT	QDV	LKY	SJ	CP	ORA	FH	MG	WI	BX
W	HMUJ	POC	TWF	DY	GI	NRS	AB	XE	LV	QK
X	TBXU	RSN	EAF	GY	DC	QJW	IK	HO	LP	MV
Y	LQMW	NJC	PYA	TI	OD	VBU	RE	FH	XG	KS

## NAVAIDS

Id	Name	Channel	Position	Elevation
BCE	Bryce Canyon	75	N3741.35 W11218.23	9040
BIH	Bishop	33	N3722.62 W11821.99	4114
BLD	Boulder	114	N3559.75 W11451.82	3650
BTY	Beatty	94	N3648.54 W11644.86	2925
CDC	Cedar City	120	N3747.24 W11304.90	5463
DAG	Daggett	79	N3457.75 W11634.69	1760
EED	Needles	99	N3445.96 W11428.43	650
GFS	Goffs	91	N3507.87 W11510.59	4019
GRL	Groom Lake	18	N3713.91 W11548.16	4475
HEC	Hector	74	N3447.83 W11627.78	1854
ILC	Wilson Creek	110	N3815.02 W11423.65	9318
INS	Creech AFB	87	N3635.20 W11540.12	3101
LAS	McCarran Intl	116	N3604.78 W11509.59	2142
LSV	Nellis	12	N3614.68 W11501.50	1864
MLF	Milford	58	N3821.62 W11300.79	4977
MMM	Mormon Mesa	90	N3646.16 W11416.65	2120
MVA	Mina	98	N3833.92 W11801.97	7860
OAL	Coale Dale	124	N3800.20 W11746.23	4800
PGS	Peach Springs	57	N3537.48 W11332.67	4754
TPH	Tonopah Muni	119	N3801.84 W11702.01	5330
TQQ	Silverbow	77	N3748.00 W11647.00	5500
UTI	St George	23	N3705.29 W11335.53	2871



RWY 3L-21R  
 PCN 46 R/C/W/T  
 RWY 3R-21L  
 PCN 51 R/C/W/T  
 2017

PAR	RWY	CAT	MINIMA		ARP	ELEV	Scale 1:35'500	
	21L	A B D E	2057 - 0.8 200 (200-0.8/1.6)	GS 3°	36° 14.060° N 115° 01.058° W	1857 [ft] 566 [m]	0 300 600 900 1200 1500 [m]	
	3R	A B D E	2057 - 0.8 200 (200-0.8/1.6)	GS 3°			0 1000 2000 3000 4000 5000 [ft]	
SRA	21R	A C D E	2257 - 1.2 350 (350-1.2/1.6)					
	3L	A C D E	2257 - 1.2 350 (350-1.2/1.6)					

RWY	TORA	TODA	ASDA	LDA	PSN	THR	ALS
21L	10051 [ft] 3063 [m]	11051 [ft] 3368 [m]	11051 [ft] 3368 [m]	10051 [ft] 3063 [m]	36°14.043' N	115°01.018' W	⊕
3R	10120 [ft] 3084 [m]	11120 [ft] 3398 [m]	11120 [ft] 3398 [m]	10120 [ft] 3084 [m]	36°13.029' N	115°02.038' W	

ATIS	NELLIS GROUND	NELLIS TOWER	NELLIS CONTROL	TACAN	ILS RWY 21L	NELLIS EAST	NELLIS WEST
270.100 MHz	275.800   121.800	327.000   132.55	317.525	LSV 12X	109.10 Mhz	384.400	385.000



# DREAM FOUR DEPARTURE DREAM4 | VALID 2014 NELLIS AFB (KLSV) LAS VEGAS, NEVADA

ATIS  
270.100  
NELLIS GROUND  
275.800  
NELLIS TOWER  
327.000  
NELLIS CONTROL  
317.525  
NELLIS DEP/APP EAST  
384.400  
BLACKJACK  
377.800

**DREAM**  
N3710.34  
W11459.53

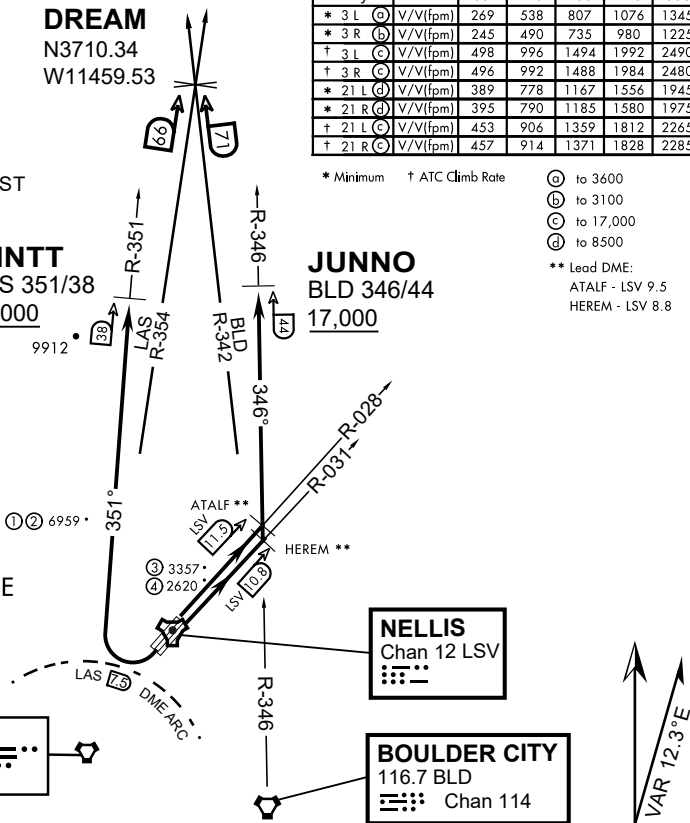
**MINTT**  
LAS 351/38  
17,000

Rwy	Knots	60	120	180	240	300	360
* 3 L (A)	V/V(fpm)	269	538	807	1076	1345	1614
* 3 R (B)	V/V(fpm)	245	490	735	980	1225	1470
† 3 L (C)	V/V(fpm)	498	996	1494	1992	2490	2988
† 3 R (C)	V/V(fpm)	496	992	1488	1984	2480	2976
* 21 L (D)	V/V(fpm)	389	778	1167	1556	1945	2334
* 21 R (D)	V/V(fpm)	395	790	1185	1580	1975	2370
† 21 L (C)	V/V(fpm)	453	906	1359	1812	2265	2718
† 21 R (C)	V/V(fpm)	457	914	1371	1828	2285	2742

\* Minimum † ATC Climb Rate

- (A) to 3600
  - (B) to 3100
  - (C) to 17,000
  - (D) to 8500
- \*\* Lead DME:  
ATALF - LSV 9.5  
HEREM - LSV 8.8

- ① 12.24 NM from Rwy 21R
- ② 12.40 NM from Rwy 21L
- ③ 5.67 NM from Rwy 3L
- ④ 5.85 NM from Rwy 3R



**NOT FOR CIVIL USE**

CAUTION: If unable to comply with restrictions advise ATC prior to departure.

LAS VEGAS  
116.9 LAS  
Chan 116

NELLIS  
Chan 12 LSV

BOULDER CITY  
116.7 BLD  
Chan 114

## DEPARTURE ROUTE DESCRIPTION

### TAKE-OFF RWY 3L

- Fly runway heading to intercept the LSV TACAN R-028 then direct ATALF, intercept the BLD VORTAC R-346 then direct JUNNO, cross JUNNO at or above 17,000, then via assigned route.

### TAKE-OFF RWY 3R

- Fly runway heading to intercept the LSV TACAN R-031 then direct HEREM, intercept the BLD VORTAC R-346 then direct JUNNO, cross JUNNO at or above 17,000, then via assigned route.

### TAKE-OFF RWY 21L/R

- Turn right to intercept LAS VORTAC R-351 outbound. Remain North of LAS 7.5 DME turning Northbound. Intercept LAS R-351 between 5000 and 6000, do not proceed West of LAS R-351. Cross MINTT at or above 17,000, then via assigned route.

NOISE ABATMENT PROCEDURES: Fly acc. Nellis Noise Abatement instructions

# DREAM FOUR DEPARTURE (DREAM4 • DREAM)

Figure A23.5. RAMMM Recovery (Not For Use In IMC).

