

**MISSION DATA CARD**

OPORD		Callsign		Mission		Date/Time		
3521/2025		Raptor 1		Training		092000JAN25		
Task	CAP/Intercept/Air Policing					Freq		
AO	South of Vegas					134.0		
Departure				Recovery				
FYTTR LOW				STRYK				
#	Callsign		Pilot		IFF	TCN	LSR	NET
-1	Raptor 1-1		Snowbird		1611	1Y	1621	
-2	Raptor 1-2		Beathovenz		1612	64Y	1622	

**LOADOUT**

A/A	2xA120C, 2xA9X				GUN	100% HEI-T	
A/G					CHF	60	
POD					FLR	60	
TKS	3xFT300				FUEL	100%	

**TOLD**

	Takeoff	Target	Joker	Bingo	Land
FUEL	13172				

**AIRBASES**

	Name	TCN	ATIS	GND	TWR	RWY	Elev	ILS
Dep	Nellis AFB	12X	270.1	275.8	327.0	21L	1850	109.1
Arr	Nellis AFB	12X	270.1	275.8	327.0	21L	1850	109.1
Div	Creech AFB	87X	290.45	275.8	360.6			

**FLIGHTPLAN**

#	Name	Navaid/Coords/DME	ALT	TOT
1	FYTTR	N36 21 26.400 W115 41 28.200	15000	
2	CAP-A-S	N35 56 37 W114 51 37	25000	
3	CAP-A-E	N35 41 45.842 W114 55 14.920	25000	
4	CAP-B-S	N35 56 30.767 W115 16 07.319	25000	
5	CAP-B-E	N35 41 48.511 W115 19 44.271	25000	
6	SARAH	N36 36 27 W115 18 01.800	15000	
7	GASS PEAK	N36 24 08.400 W115 10 39.600	15000	
8	SIMNS	N36 17 20.400 W115 10 45	15000	
9	CRAIG	N36 15 15 W115 08 16.200	15000	
10	Nellis AFB	N36 13 32 W115 02 37	1500	

**COMMS**

Radio	Usage
2	134,00 121,50

## NOTES

CAP ALPHA /CAP-A-S/TOT1230-1430/ALT 24000-26000/LH/180

## OTHER FLIGHTS

Callsign	Mission	Airframe	Freq	TCN	Grpld	Laser
Edelweiss 5	Training	2x F/A-18C	264.55	12/75	1	175X
	AO	Range 64c	Task	LCR-Check Testflight		
Raptor 2	Training	2x F-16C	134.5	1/64		162X
	AO	South of Vegas	Task	CAP/Intercept/Air Policing		
Nazgul 6	Training	4x F-15E	262.45	1/64		156X
	AO	Student Gap	Task	Toss Training		
Monster 1	Training	2x A-10C	132.15	1/64	21	161X
	AO	R65	Task	GUN		

**RADIO CHANNELS**

#	Freq	Name
1		Flight/Squadron specific
2	289.4	Nellis Clearance Delivery
3	275.8	Nellis Ground
4	327.0	Nellis Tower
5	385.4	Nellis Approach/Departure West
6	273.55	Nellis Approach/Departure East
7	317.525	Nellis Control -- Sally
8	254.4	Nellis Control-- Lee
9	305.6	SOF Bullseye
10	343.725	EMERGENCY SINGLE FRQ
11	270.1	Nellis ATIS
12	360.625	Creech AFB Tower
13	250.1	HAVE QUICK 13
14	251.1	HAVE QUICK 14
15	252.1	HAVE QUICK 15
16	377.8	Blackjack
17	265.0	KC-135 AR-641A
18	360.8	KC-135MPRS AR-635
19	319.8	KC-135MPRS AR-625
20	300.05	KC-135 AR-231V

**RAMROD**

0	1	2	3	4	5	6	7	8	9
H	Y	S	T	E	R	I	C	A	L

**KTC 1400 C**

	0	1	2	3	4	5	6	7	8	9
A	XJBD	PVH	YMG	AC	QL	NUS	ER	WI	TF	KO
B	RAVN	XGC	DLQ	MW	FU	POS	KE	JB	HT	YI
C	GEYH	OAP	FDU	TK	SL	BQM	RJ	IN	CX	WV
D	CWBV	IKP	HJL	TR	DX	FEU	YO	SG	NM	AQ
E	OPJM	FEL	VQK	NG	UR	DAX	YB	ST	HI	WC
F	OEXV	TDS	QLJ	IN	KY	PRW	GC	MU	BH	AF
G	EBOY	TVJ	AHD	CL	WS	RGK	IU	PF	QM	NX
H	IOLP	TMH	FNR	QJ	UK	YXS	CG	BW	ED	AV
I	DOVK	RXC	TWP	UB	AH	QLS	JN	IF	ME	YG
J	LUBS	KRF	OGH	XI	QJ	NVY	ME	PD	TC	WA
K	IKNG	AJU	BXY	QW	DE	OVF	MH	SR	LC	TP
L	KTDH	JCQ	IXV	FS	GN	YME	WB	RO	UP	LA
M	MSGV	OUA	PBJ	YT	KW	RED	XC	IH	FN	QL
N	ILFA	JTC	PMS	UE	XR	HWQ	BD	OY	NG	KV
O	EVNG	TIM	KXU	AO	WD	BLP	SF	CJ	HY	QR
P	IROT	LAV	HSY	WX	BP	KNM	UD	JQ	FG	EC
Q	VNUI	SKL	QFT	WC	OB	ARJ	DX	PH	EG	MY
R	VHEM	DPW	YIB	FN	OC	JUA	XL	SK	RT	QG
S	YCMO	VHP	DLT	WB	RK	JFE	GA	QS	NX	UI
T	OWIE	CXR	UAY	JD	LN	VQK	PF	TM	HB	SG
U	DIUG	REJ	AXC	HS	WM	OFP	NQ	BY	VL	TK
V	ENUT	QDV	LKY	SJ	CP	ORA	FH	MG	WI	BX
W	HMUJ	POC	TWF	DY	GI	NRS	AB	XE	LV	QK
X	TBXU	RSN	EAF	GY	DC	QJW	IK	HO	LP	MV
Y	LQMW	NJC	PYA	TI	OD	VBU	RE	FH	XG	KS

**NAVAIDS**

<b>Id</b>	<b>Name</b>	<b>Channel</b>	<b>Position</b>	<b>Elevation</b>
BCE	Bryce Canyon	75	N3741.35 W11218.23	9040
BIH	Bishop	33	N3722.62 W11821.99	4114
BLD	Boulder	114	N3559.75 W11451.82	3650
BTY	Beatty	94	N3648.54 W11644.86	2925
CDC	Cedar City	120	N3747.24 W11304.90	5463
DAG	Daggett	79	N3457.75 W11634.69	1760
EED	Needles	99	N3445.96 W11428.43	650
GFS	Goffs	91	N3507.87 W11510.59	4019
GRL	Groom Lake	18	N3713.91 W11548.16	4475
HEC	Hector	74	N3447.83 W11627.78	1854
ILC	Wilson Creek	110	N3815.02 W11423.65	9318
INS	Creech AFB	87	N3635.20 W11540.12	3101
LAS	McCarran Intl	116	N3604.78 W11509.59	2142
LSV	Nellis	12	N3614.68 W11501.50	1864
MLF	Milford	58	N3821.62 W11300.79	4977
MMM	Mormon Mesa	90	N3646.16 W11416.65	2120
MVA	Mina	98	N3833.92 W11801.97	7860
OAL	Coale Dale	124	N3800.20 W11746.23	4800
PGS	Peach Springs	57	N3537.48 W11332.67	4754
TPH	Tonopah Muni	119	N3801.84 W11702.01	5330
TQQ	Silverbow	77	N3748.00 W11647.00	5500
UTI	St George	23	N3705.29 W11335.53	2871



RWY 3L-21R  
 PCN 46 R/C/W/T  
 RWY 3R-21L  
 PCN 51 R/C/W/T  
 2017

PAR	RWY	CAT	MINIMA		ARP	ELEV	Scale 1:35'500 0 300 600 900 1200 1500 [m] 0 1000 2000 3000 4000 5000 [ft]
	21L	A B D E	2057 - 0.8 200 (200-0.8/1.6)	GS 3°	36° 14.060° N	1857 [ft]	
	3R	A B D E	2057 - 0.8 200 (200-0.8/1.6)	GS 3°	115° 01.058° W	566 [m]	
SRA	21R	A C D E	2257 - 1.2 350 (350-1.2/1.6)				
	3L	A C D E	2257 - 1.2 350 (350-1.2/1.6)				

RWY	TORA	TODA	ASDA	LDA	PSN	THR	ALS
21L	10051 [ft] 3063 [m]	11051 [ft] 3368 [m]	11051 [ft] 3368 [m]	10051 [ft] 3063 [m]	36°14.043' N	115°01.018' W	⊕
3R	10120 [ft] 3084 [m]	11120 [ft] 3398 [m]	11120 [ft] 3398 [m]	10120 [ft] 3084 [m]	36°13.029' N	115°02.038' W	

ATIS	NELLIS GROUND	NELLIS TOWER	NELLIS CONTROL	TACAN	ILS RWY 21L	NELLIS EAST	NELLIS WEST
270.100 MHz	275.800   121.800	327.000   132.55	317.525	LSV 12X	109.10 Mhz	384.400	385.000



ATIS  
270.100  
NELLIS GROUND  
275.800  
NELLIS TOWER  
327.000  
NELLIS CONTROL  
317.525  
NELLIS DEP/APP EAST  
384.400  
BLACKJACK  
377.800

CAUTION: If unable to comply  
with restrictions advise ATC  
prior to departure.



# VMC ONLY

## PILOT RESPONSIBLE FOR TERRAIN AVOIDANCE

① 4 NM from RWY 3L/R

**BEATTY**  
Chan 94 BTY

RANGE 64/65    RANGE 63

TUCKY

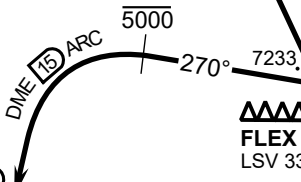
320°

R-2508

LSV R-269

**FYTTR**  
N3621.44  
W11541.47

BTY R-105



**FLEX**  
LSV 337/5

270°

7233

2086 M

① 3000

←R-255

6000

5000

300°

←R-269

1859

**NELLIS**  
Chan 12 LSV

4131

© Jeppesen NTR NAV CHART



### DEPARTURE ROUTE DESCRIPTION

#### TAKEOFF RWY 3L/R:

- Remain below 3,000' MSL until north of Race Track and turned westbound.
- Turn left within 4NM of Nellis direct FLEX. Fly north of FLEX and turn left heading 270°.
- Intercept LSV 15 DME ARC at or below 5,000' MSL.
- ARC south, intercept LSV R-269 outbound. Maintain VFR.

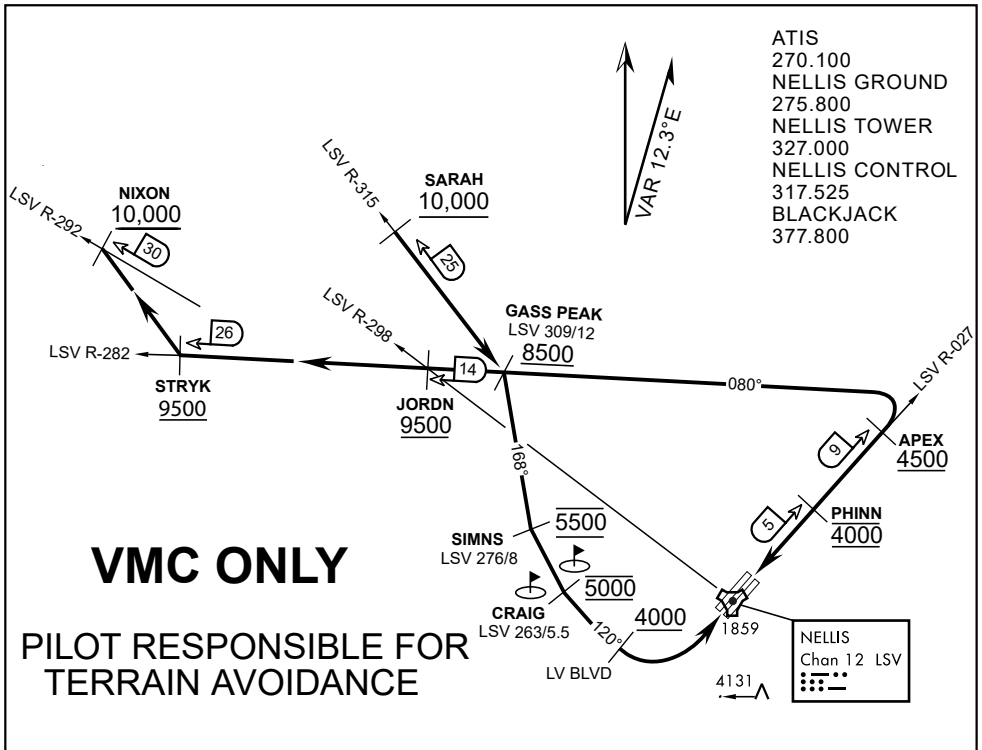
#### TAKEOFF RWY 21L/21R:

- Follow Noise Abatement Procedures.
- Fly runway heading until past Golf Course, turn right heading 300°.
- Cross LSV R-255 between 5,000' and 6,000' , intercept and proceed outbound on the LSV R-269.Recommend climb to 8,500' MSL or appropriate VFR altitude for overflight of North Las Vegas Training Area. Fly routing for appr. mission/transition.

#### TRANSITIONS:

- R-4806:** Turn right at the LSV 269/20 direct to assigned ranges.
- BEATTY:** Turn right at FYTTR direct BTY via the BTY R-105
- R-2508:** Turn right at the FYTTR, intercept the BTY 105/30, direct TUCKY, then direct R-2508

### FYTTR DEPARTURE AND TRANSITIONS (FYTTR LOW)



**APPROACH ROUTE DESCRIPTION**

**APPROACH RWY 3L/R**

Cross STRYK at or above 9,500' MSL, proceed direct GASS PEAK. Cross JORDN at or above 9,500' MSL, cross GASS PEAK at or above 8,500' MSL. Proceed direct SIMNS and cross at 5,500' MSL. Cross Las Vegas Blvd at or above 4,000' MSL then to 3,500' MSL for Initial. Remain within 4 DME if LSV on turn to final.

**VFR STRAIGHT-IN RWY 3L/R**

Depart CRAIG & descend to be at 3,000' MSL by Las Vegas Blvd. Do not descend below 3,000' MSL until within 5 DME of LSV or 4 NM of the runway on turn to final.

**APPROACH RWY 21L/R**

Cross STRYK at or above 9,500' MSL, proceed direct GASS PEAK. Cross JORDN at or above 9,500' MSL, cross GASS PEAK at or above 8,500' MSL. Cross APEX at or above 4,500' MSL then direct 5NM initial. Descend to cross PHINN at 4,000' MSL, Inside 5 NM descend to 3,500' MSL.

**VFR STRAIGHT-IN RWY 21L/R**

Cross APEX at 4,000' MSL. Descend to be at 3,000' MSL at PHINN. Descend to 3,000' MSL at LSV 027/5.

**RANGE 63B EXIT**

**SOUTH:** Via NIXON at or above 10,000' MSL, then direct STRYK.  
**EAST:** Via SARAH at or above 10,000' MSL, then direct GASS PEAK.



INDIAN SPRINGS, NEVADA

TACAN INS Chan 87	APCH CRS 065°	Rwy ldg TDZE 3133	9002 3113
		Arpt Elev 3113	

INDIAN SPRINGS AF AUX (KINS)

**▼** \* MISSED APPROACH: Straight ahead to INS TACAN, intercept INS R-outbound, cross 17 DME at or above 9500, then direkt KSV TACAN 114

NELLIS CON

CREECH AFB TOWER  
118.30 60.60

GND CON

**NOT FOR CIVIL USE**

FOR USE UNDER BASIC VFR  
WEATHER MINIMUMS ONLY

PILOT IS RESPONSIBLE FOR TERRAIN/OBSTACLE  
AVOIDANCE AND  
APPROPRIATE VFR CLOUD  
CLEARANCE FOR ALL

**CAUTION:** Descent gradients are greater than allowed under standard TERPS criteria and inbound course does not meet straight-in criteria

**CAUTION:** Final approach course crosses Runway centerline at MIDFIELD. Maneuvering left of course required prior to landing. Do not Maneuver farther north than the INS R- 258

Modified by vJaBoG 66 for use with DCS  
NOT FOR REAL LIFE NAVIGATION

Modified by vJaBoG 66 for use with DCS  
NOT FOR REAL LIFE NAVIGATION



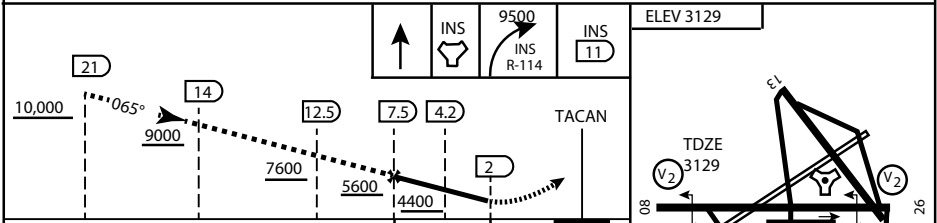
\* CAUTION: Missed Approach Climb Rate to 4,700

Knots	60	120	180	240	300
V/V (fpm)	230	460	690	920	1150

Controlling Obstacle

HIGH ALTITUDE FACILITIES

EMERG SAFE ALT 100 NM 14,000



CATEGORY	A	B	C	D	E
S-8	3760-1 1/2	627 (700-1 1/2)	3760-1 3/4 627 (700-1 3/4)	3760-2 627 (700-2)	3760-2 1/4 627 (700-2 1/4)
CIRCLING	NOT AUTHORIZED				

ELEV 3129

3165

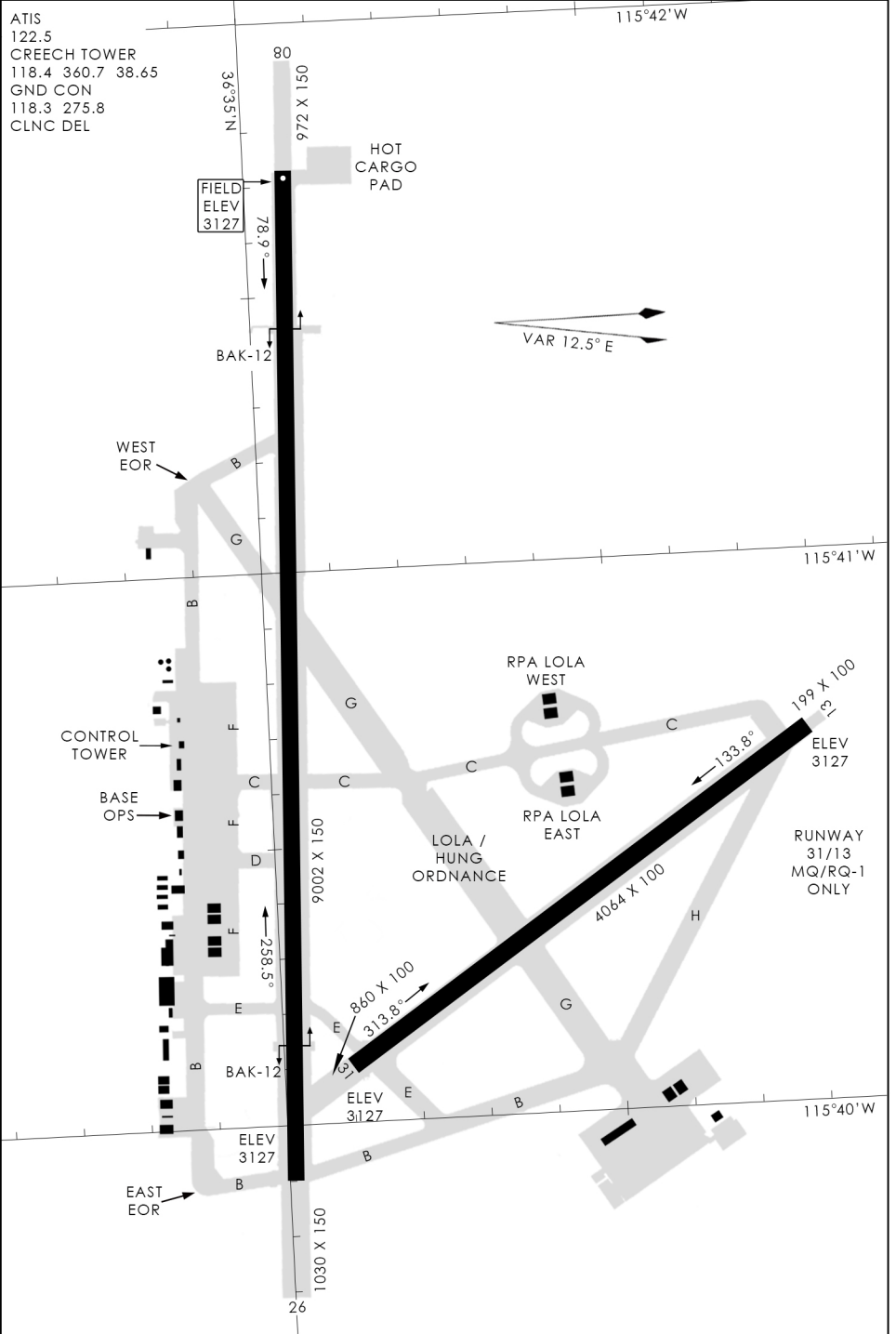
MIRL Rwy 8-26

CITY OF INDIAN, NEVADA

INDIAN SPRINGS AF AUX (KINS)

(FOR DAY VFR USE ONLY)





476 vFG JAN 2019

476 vFG JAN 2019