

MISSION DATA CARD

OPORD		Callsign		Mission		Date/Time		
3520/2025		Chevy 1		Training		090127JAN25		
Task							Freq	
AO							134.0	
Departure				Recovery				
VFR Depature				ILS RWY 21				
#	Callsign		Pilot		IFF	TCN	LSR	NET
-1	Chevy 1-1		Hercules		2311	1Y	1621	
-2	Chevy 1-2		Jinx		2312	64Y	1622	

LOADOUT

A/A						GUN	
A/G						CHF	
POD						FLR	
TKS						FUEL	

TOLD

	Takeoff	Target	Joker	Bingo	Land
FUEL	7163				

AIRBASES

	Name	TCN	ATIS	GND	TWR	RWY	Elev	ILS
Dep	Rovaniemi	14X	282.8	282.5	250.55	21	643	111.7
Arr	Rovaniemi	14X	282.8	282.5	250.55	21	643	111.7
Div	Rovaniemi	14X	282.8	282.5	250.55	21	643	111.7

SUPPORT**Tanker**

Callsign	TCN	Freq	ALT	TAS
ARCO 1	22Y	319.8		
Pos				

RADIO CHANNELS

#	Freq	Name
1		Flight/Squadron specific
2	282.8	Rovaniemi ATIS
3	282.5	Rovaniemi Ground
4	250.55	Rovaniemi Tower
5	320.7	Bodo ATIS
6	250.75	Bodo Tower
7	235.45	Kallax ATIS
8	250.3	Kallax Tower
9	265.0	Texaco-1 KC-135 Medium / Slow 71Y
10	319.8	Arco-1 KC-135 High / Fast 22Y
11	360.8	Shell-1 KC-135 MPRS High / Fast 41Y
12	304.0	CVN-71 Rough Rider (RRR) 71X
13	303.0	LHA-1 Tarawa (TWA) 79X
14	247.8	S-3B Mauler-1 (MAU) 64Y
15	347.8	Loki (E-2D)
16	348.7	Heimdall (E-3A)
17	242.17	ESR02 - CAS Range Operator
18	34.7	ESR02 - JTAC Odin
19	270.5	Blue
20	270.75	Red

RAMROD

0	1	2	3	4	5	6	7	8	9
H	Y	S	T	E	R	I	C	A	L

KTC 1400 C

	0	1	2	3	4	5	6	7	8	9
A	XJBD	PVH	YMG	AC	QL	NUS	ER	WI	TF	KO
B	RAVN	XGC	DLQ	MW	FU	POS	KE	JB	HT	YI
C	GEYH	OAP	FDU	TK	SL	BQM	RJ	IN	CX	WV
D	CWBV	IKP	HJL	TR	DX	FEU	YO	SG	NM	AQ
E	OPJM	FEL	VQK	NG	UR	DAX	YB	ST	HI	WC
F	OEXV	TDS	QLJ	IN	KY	PRW	GC	MU	BH	AF
G	EBOY	TVJ	AHD	CL	WS	RGK	IU	PF	QM	NX
H	IOLP	TMH	FNR	QJ	UK	YXS	CG	BW	ED	AV
I	DOVK	RXC	TWP	UB	AH	QLS	JN	IF	ME	YG
J	LUBS	KRF	OGH	XI	QJ	NVY	ME	PD	TC	WA
K	IKNG	AJU	BXY	QW	DE	OVF	MH	SR	LC	TP
L	KTDH	JCQ	IXV	FS	GN	YME	WB	RO	UP	LA
M	MSGV	OUA	PBJ	YT	KW	RED	XC	IH	FN	QL
N	ILFA	JTC	PMS	UE	XR	HWQ	BD	OY	NG	KV
O	EVNG	TIM	KXU	AO	WD	BLP	SF	CJ	HY	QR
P	IROT	LAV	HSY	WX	BP	KNM	UD	JQ	FG	EC
Q	VNUI	SKL	QFT	WC	OB	ARJ	DX	PH	EG	MY
R	VHEM	DPW	YIB	FN	OC	JUA	XL	SK	RT	QG
S	YCMO	VHP	DLT	WB	RK	JFE	GA	QS	NX	UI
T	OWIE	CXR	UAY	JD	LN	VQK	PF	TM	HB	SG
U	DIUG	REJ	AXC	HS	WM	OFP	NQ	BY	VL	TK
V	ENUT	QDV	LKY	SJ	CP	ORA	FH	MG	WI	BX
W	HMUJ	POC	TWF	DY	GI	NRS	AB	XE	LV	QK
X	TBXU	RSN	EAF	GY	DC	QJW	IK	HO	LP	MV
Y	LQMW	NJC	PYA	TI	OD	VBU	RE	FH	XG	KS

NAVAIDS

Id	Name	Channel	Position	Elevation
BOO	Bodo	45	N67 15.838 E014 20.046	43
BNK	Banak	47	N70 03.937 E024 58.181	17
OYA	Andoya	28	N69 17.175 E016 08.658	19

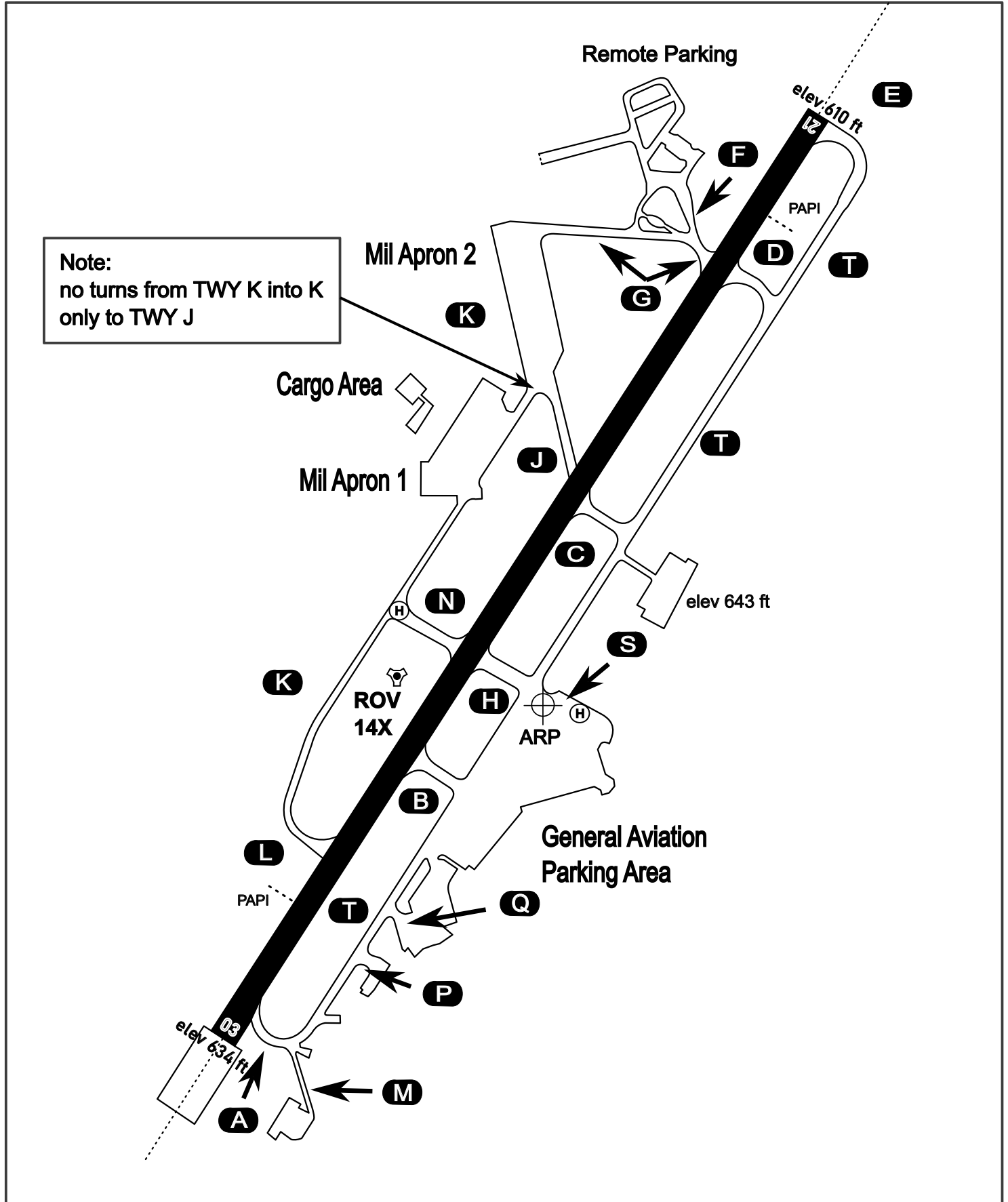
AERODROME CHART

Rovaniemi Aerodrome

ARP N66° 33' 42" E025° 49' 51"

elev 643 ft

ROVANIEMI, FINLAND

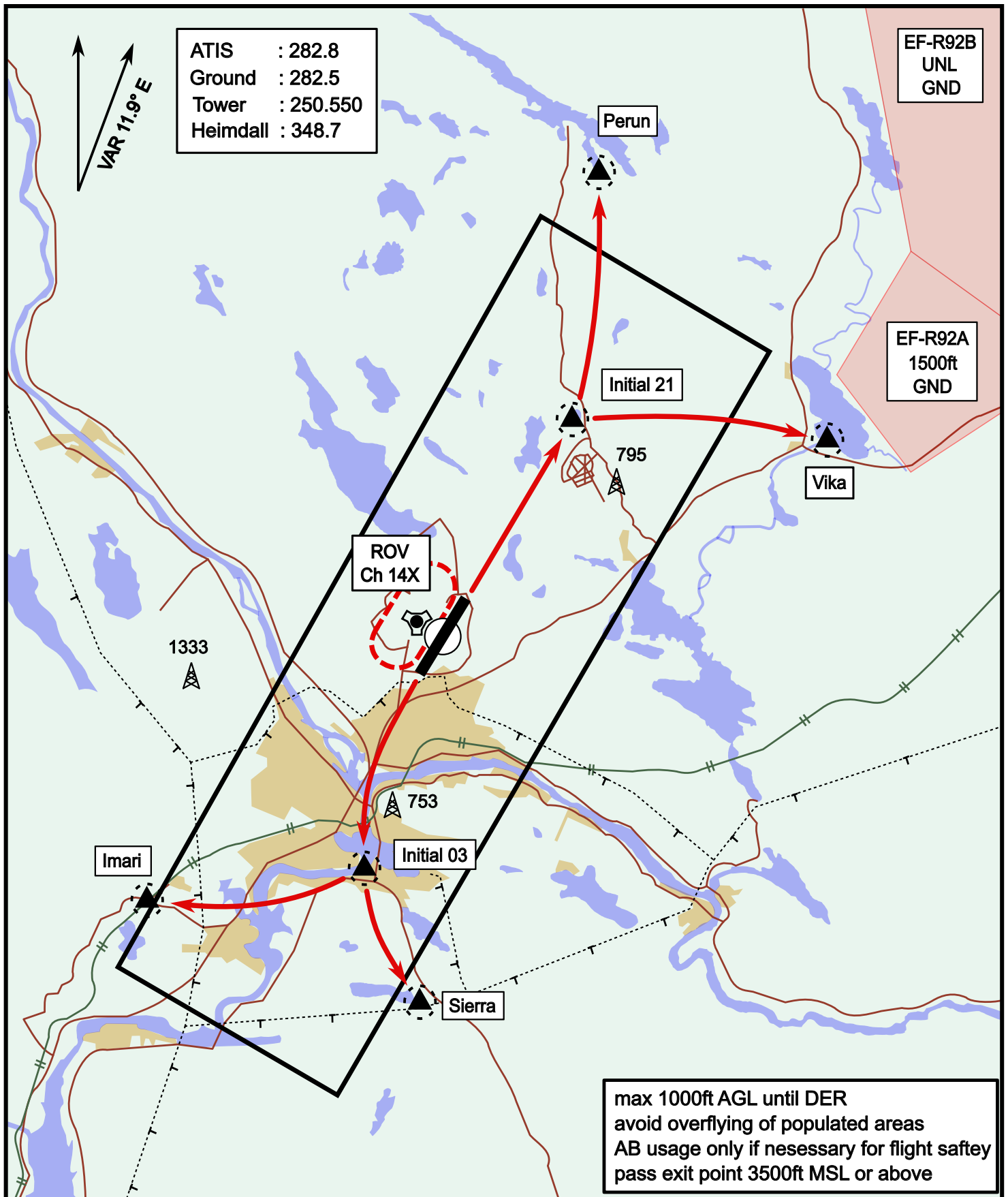


ATIS	Ground	Tower	Radar
282.800	282.500	250.550	348.700

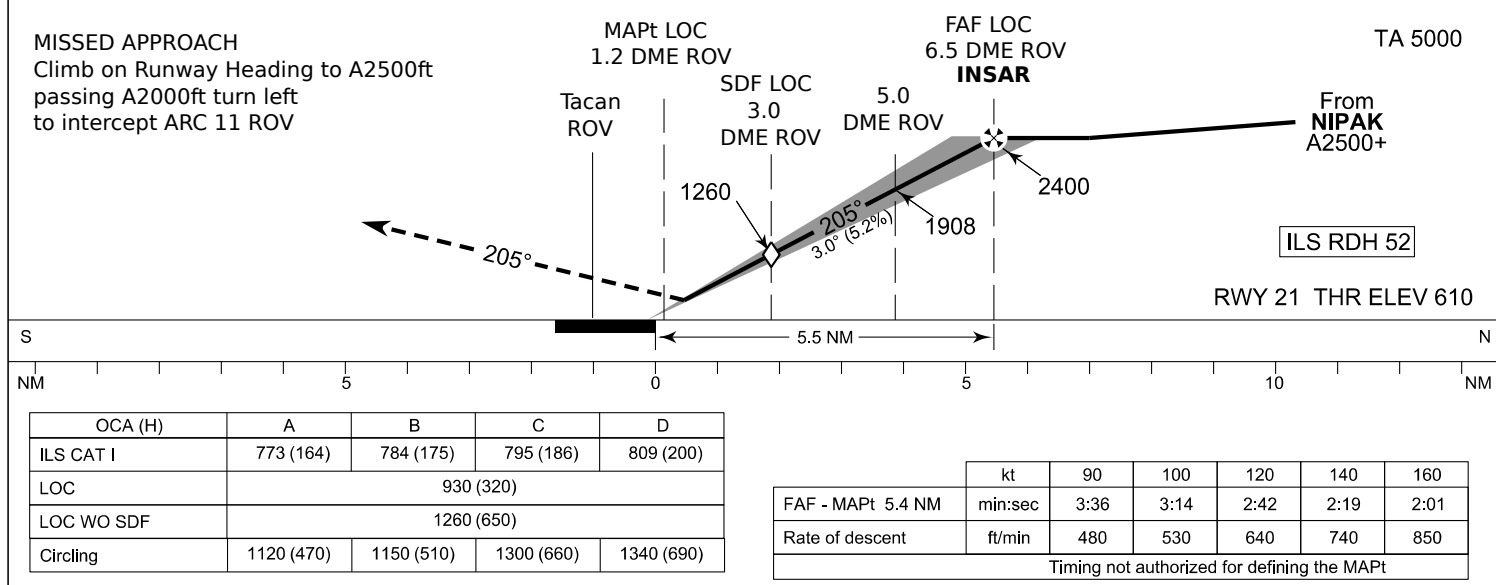
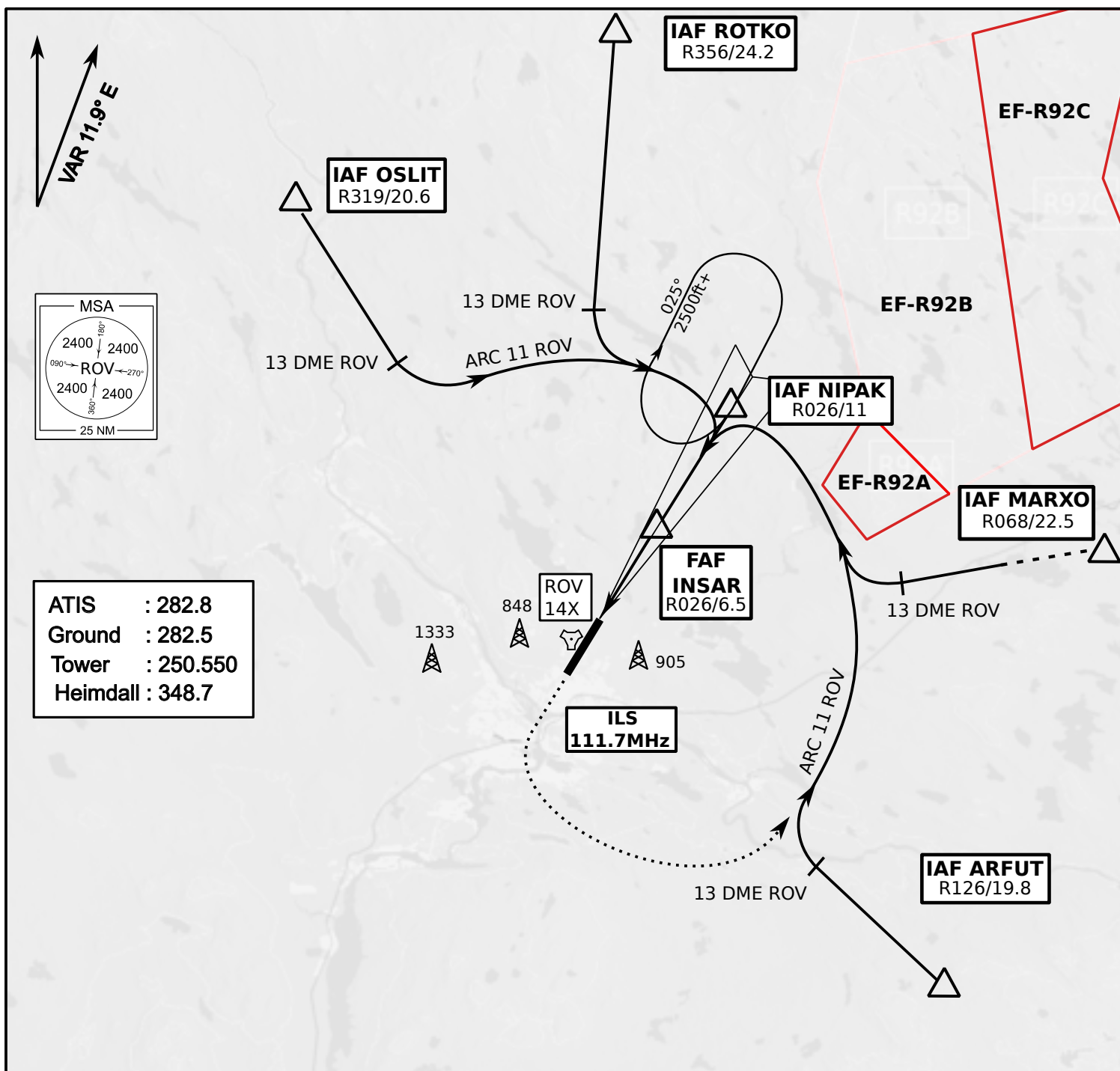
Visual Departure Jet

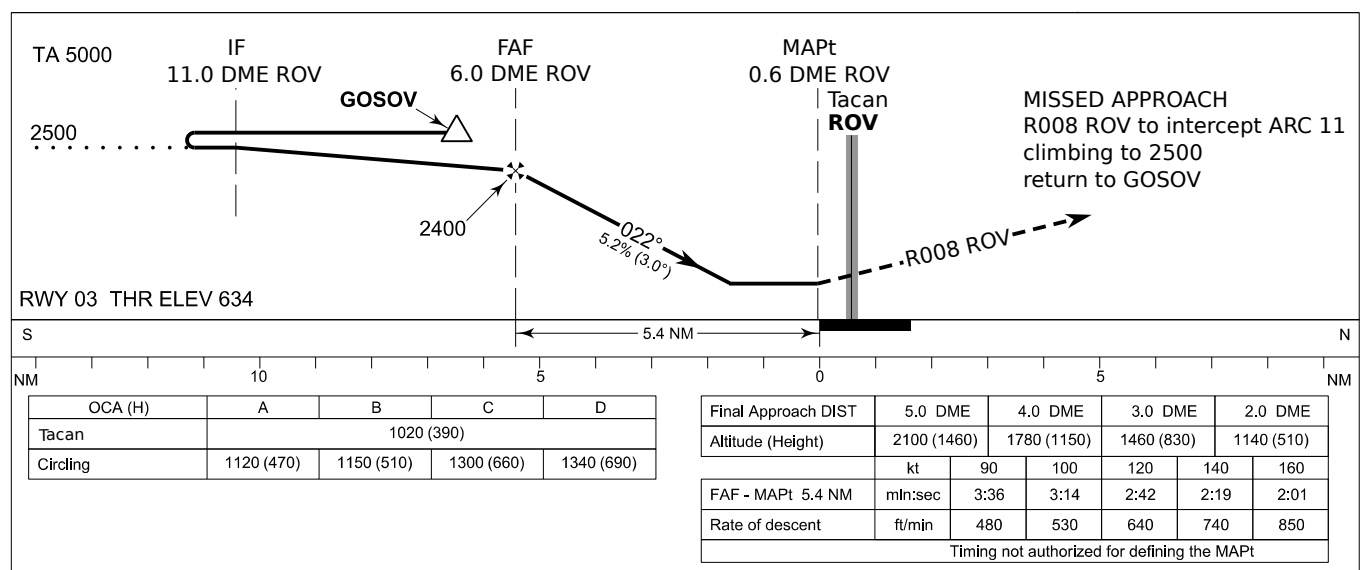
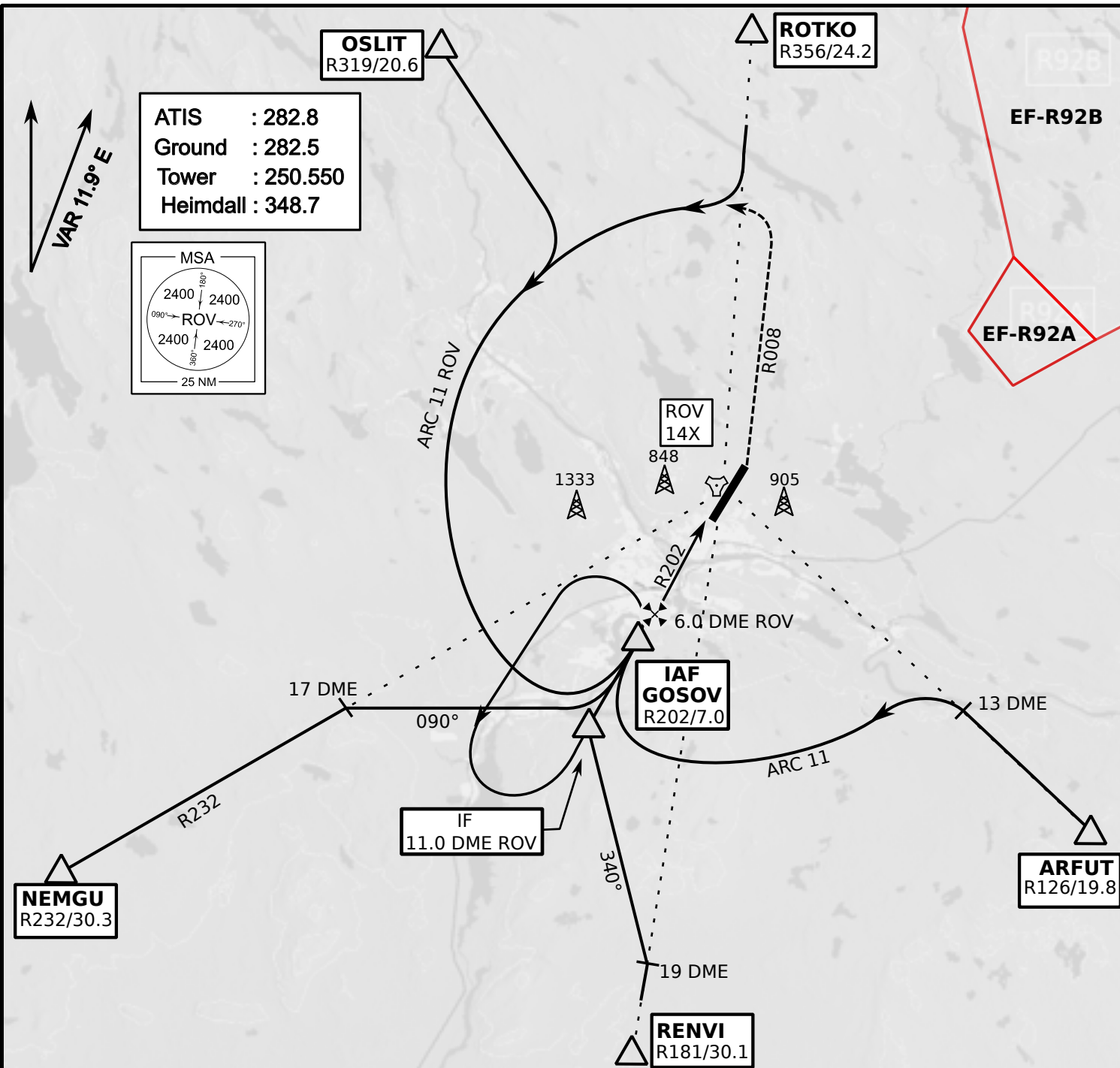
elev 643 ft

Rovaniemi, Finland



Vika	N66° 37.474 / E026° 13.557	Sierra	N66° 25.711 / E025° 46.610
Perun	N66° 44.135 / E026° 01.630	Imari	N66° 28.406 / E025° 31.291
Initial21	N66° 38.421 / E025° 58.682	Initial03	N66° 28.793 / E025° 44.105





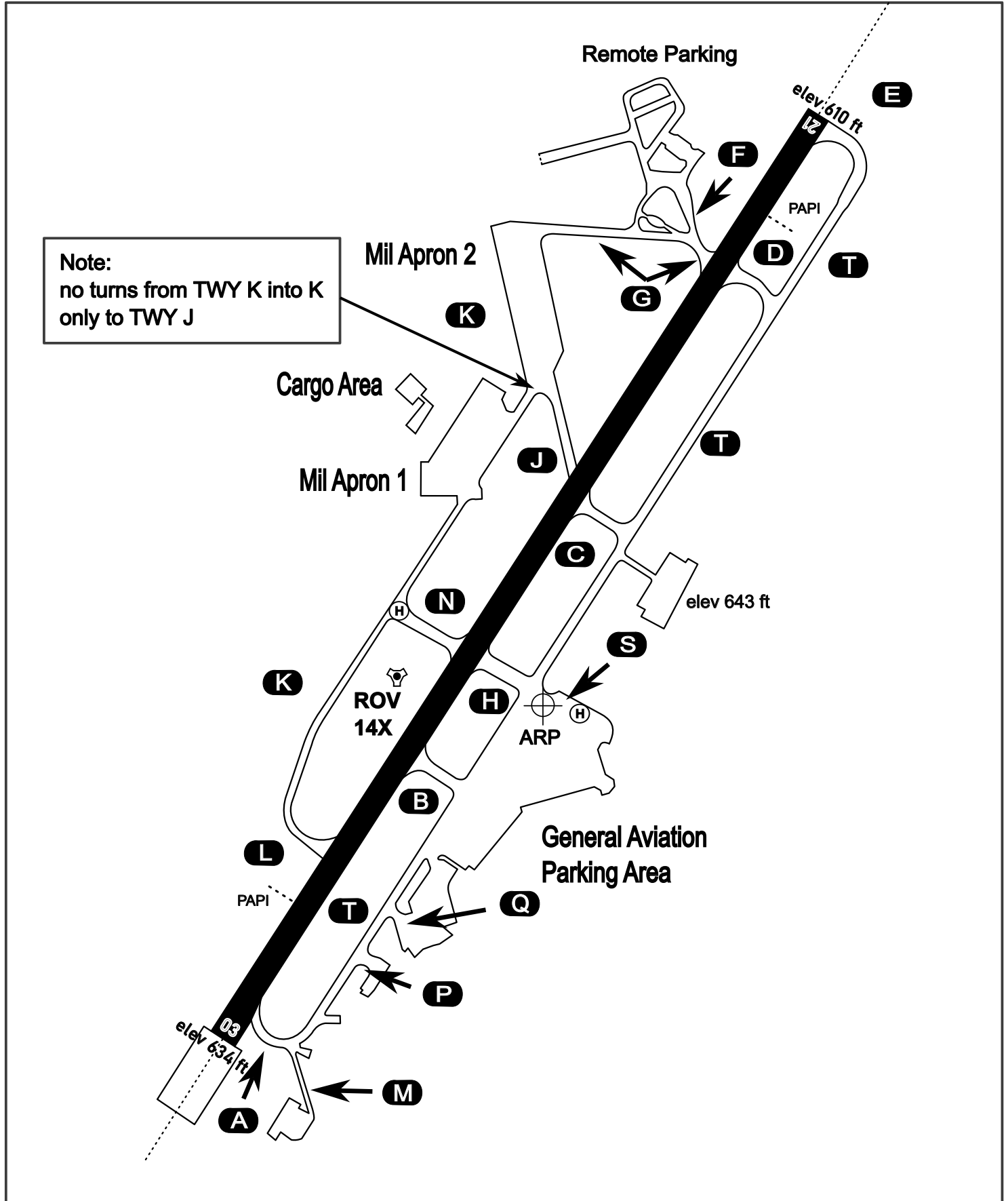
AERODROME CHART

Rovaniemi Aerodrome

ARP N66° 33' 42" E025° 49' 51"

elev 643 ft

ROVANIEMI, FINLAND



ATIS	Ground	Tower	Radar
282.800	282.500	250.550	348.700