

MISSION DATA CARD

OPORD		Callsign		Mission		Date/Time		
3513/2025		Nazgul 6		Training		062000JAN25		
Task	Fam Flight					Freq		
AO						262.45		
Departure				Recovery				
DREAM FOUR				HI-ILS or LOC/DME Z RWY 21L				
#	Callsign		Pilot		IFF	TCN	LSR	NET
-1	Nazgul 6-1		Striver/Lempo		1161	1Y	1561	
-2	Nazgul 6-2		Tank		1162	64Y	1562	

LOADOUT

A/A	2xA9M, 2xA120C				GUN	100% SAPHEI
A/G					CHF	240
POD	TGT, NAV				FLR	0
TKS					FUEL	100%

TOLD

	Takeoff	Target	Joker	Bingo	Land
FUEL	22588				

AIRBASES

	Name	TCN	ATIS	GND	TWR	RWY	Elev	ILS
Dep	Nellis AFB	12X	270.1	275.8	327.0	21L	1850	109.1
Arr	Nellis AFB	12X	270.1	275.8	327.0	21L	1850	109.1

FLIGHTPLAN

#	Name	Navaid/Coords/DME	ALT	TOT
1	HEREM	N36 22.521 W114 52.306		
2	JUNNO	BLD 346/44 (N36 43.800 W114 52.770)	17000	
3	ARCOE	LSV 357/30 (N36 44.260 W114 55.020)	15000	
4	RONKY	N36 39.332 W114 56.110	15000	
5	WISTO	N36 35.388 W114 56.977	12500	
6	OLNIE	N36 34.989 W114 54.756	10000	
7	KRYSS	N36 30.369 W114 44.190	8900	
8	SHEET	N36 24.532 W114 50.652	5000	
9	ROTSE	N36 20.025 W114 55.561	4200	
10	JELIR	N36 17.482 W114 58.326	3140	

SUPPORT**Tanker**

Callsign	TCN	Freq	ALT	TAS
TEXACO 2	95Y	289.7	FL220	420
	Pos	Pegasus.1: CDC 166/102 (N3730 W11440)		
TEXACO 1	94Y	265.0	17000	290
	Pos	AR-641A: CDC 242/78 (N3728 W11439)		
TEXACO 3	22Y	300.05	15000	280
	Pos	AR-231V: BTY 126/37 (N3620 W11614)		

AWACS

Callsign	Freq	ALT	Pos
MAGIC	377.8	FL270	N3749 W11417 - N3713 W11446

OTHER FLIGHTS

Callsign	Mission	Airframe	Freq	TCN	Grpld	Laser
Monster 4	Training	4x A-10C	132.15	1/64	24	141X
AO	Nellis	Task	FAM Flight			
T-Rex 4	Training	3x A-10C	132.25	1/64	25	141X
AO	Nellis	Task	FAM Flight			
Edelweiss 5	Training	3x F/A-18C	264.55	12/75	1	175X
AO	Range 64	Task	LCR-Check Testflight			
Raptor 1	Training	4x F-16C	134.0	1/64		162X
AO	EAST NTTR	Task	CAP			
Rattler 1	Training	2x AH-64D	133.5	1/64		125X
AO	LATNC	Task				
Raptor 2	Training	4x F-16C	134.5	1/64		162X
AO	EAST NTTR	Task	CAP			

RADIO CHANNELS

#	Freq	Name
1		Flight/Squadron specific
2	289.4	Nellis Clearance Delivery
3	275.8	Nellis Ground
4	327.0	Nellis Tower
5	385.4	Nellis Approach/Departure West
6	273.55	Nellis Approach/Departure East
7	317.525	Nellis Control -- Sally
8	254.4	Nellis Control-- Lee
9	305.6	SOF Bullseye
10	343.725	EMERGENCY SINGLE FRQ
11	270.1	Nellis ATIS
12	360.625	Creech AFB Tower
13	250.1	HAVE QUICK 13
14	251.1	HAVE QUICK 14
15	252.1	HAVE QUICK 15
16	377.8	Blackjack
17	265.0	KC-135 AR-641A
18	360.8	KC-135MPRS AR-635
19	319.8	KC-135MPRS AR-625
20	300.05	KC-135 AR-231V

RAMROD

0	1	2	3	4	5	6	7	8	9
P	R	E	C	L	U	D	I	N	G

KTC 1400 C

	0	1	2	3	4	5	6	7	8	9
A	KSRL	WEG	HMX	IY	OA	DTN	FU	VP	JC	BQ
B	MBDY	SNC	KVT	WO	AU	RPQ	GH	LX	FJ	IE
C	VNJC	LXE	GTW	BA	YH	DOS	QF	KI	UM	PR
D	PCTX	IYS	HUL	FK	ER	JWV	ON	BA	GD	MQ
E	UKJL	GCF	QTW	IM	AH	XPO	DN	EB	YS	RV
F	ELMX	BWC	HND	JT	OF	SAU	YV	GR	KQ	IP
G	RUVA	BDO	TQF	PX	KG	MSC	LW	JH	YE	NI
H	MIGX	NVL	COF	PU	YT	WRQ	SE	DB	KA	JH
I	XMBF	SDE	JPY	TG	WQ	OUL	NV	AR	IH	CK
J	TWMC	QFG	JAO	VH	NL	IRY	KS	UE	PX	DB
K	REHY	JQN	XWO	CG	DL	TIS	UM	FP	BV	KA
L	QLTW	HMO	YSR	BV	DJ	XEF	GC	NI	PK	AU
M	SFMN	DWC	QKI	XB	YO	VEU	TL	JP	GH	RA
N	APLB	EFH	TDG	XV	WR	QIO	KN	SM	UJ	YC
O	MBLS	GXN	DFI	OJ	HP	WRK	UE	VT	QC	YA
P	SBAO	WRQ	DFJ	XV	LN	IYU	CM	PH	TG	EK
Q	CRTK	ALQ	DIP	SN	FO	BXG	MJ	WU	HV	YE
R	STGU	QJY	RAI	HN	CD	MXE	FO	PL	VB	WK
S	VHSI	QXW	KJD	BF	PL	OTM	CG	YU	AR	EN
T	IUMP	FTJ	KVS	LC	QY	HRB	DO	EW	AN	XG
U	EUIQ	CXK	SNF	GB	HM	YRL	AP	VW	DO	JT
V	GHYF	CWI	DLN	ES	PK	BXT	QO	AM	UR	JV
W	ADRQ	JYF	GHX	BN	TI	WKV	SM	CU	EP	LO
X	GAMP	CJW	UTY	RE	SO	VDN	IB	FH	KQ	XL
Y	KMRL	XPF	UWJ	IT	GQ	VND	OB	SA	EY	HC

NAVAIDS

Id	Name	Channel	Position	Elevation
BCE	Bryce Canyon	75	N3741.35 W11218.23	9040
BIH	Bishop	33	N3722.62 W11821.99	4114
BLD	Boulder	114	N3559.75 W11451.82	3650
BTY	Beatty	94	N3648.54 W11644.86	2925
CDC	Cedar City	120	N3747.24 W11304.90	5463
DAG	Daggett	79	N3457.75 W11634.69	1760
EED	Needles	99	N3445.96 W11428.43	650
GFS	Goffs	91	N3507.87 W11510.59	4019
GRL	Groom Lake	18	N3713.91 W11548.16	4475
HEC	Hector	74	N3447.83 W11627.78	1854
ILC	Wilson Creek	110	N3815.02 W11423.65	9318
INS	Creech AFB	87	N3635.20 W11540.12	3101
LAS	McCarran Intl	116	N3604.78 W11509.59	2142
LSV	Nellis	12	N3614.68 W11501.50	1864
MLF	Milford	58	N3821.62 W11300.79	4977
MMM	Mormon Mesa	90	N3646.16 W11416.65	2120
MVA	Mina	98	N3833.92 W11801.97	7860
OAL	Coale Dale	124	N3800.20 W11746.23	4800
PGS	Peach Springs	57	N3537.48 W11332.67	4754
TPH	Tonopah Muni	119	N3801.84 W11702.01	5330
TQQ	Silverbow	77	N3748.00 W11647.00	5500
UTI	St George	23	N3705.29 W11335.53	2871



RWY 3L-21R
 PCN 46 R/C/W/T
 RWY 3R-21L
 PCN 51 R/C/W/T
 2017

PAR	RWY	CAT	MINIMA		ARP	ELEV	Scale 1:35'500	
	21L	A B D E	2057 - 0.8 200	(200-0.8/1.6) GS 3°	36° 14.060° N 115° 01.058° W	1857 [ft] 566 [m]	0 300 600 900 1200 1500 [m]	
	3R	A B D E	2057 - 0.8 200	(200-0.8/1.6) GS 3°			0 1000 2000 3000 4000 5000 [ft]	
SRA	21R	A C D E	2257 - 1.2 350	(350-1.2/1.6)				
	3L	A C D E	2257 - 1.2 350	(350-1.2/1.6)				

RWY	TORA	TODA	ASDA	LDA	PSN	THR	ALS
21L	10051 [ft] 3063 [m]	11051 [ft] 3368 [m]	11051 [ft] 3368 [m]	10051 [ft] 3063 [m]	36°14.043' N	115°01.018' W	⊕
3R	10120 [ft] 3084 [m]	11120 [ft] 3398 [m]	11120 [ft] 3398 [m]	10120 [ft] 3084 [m]	36°13.029' N	115°02.038' W	

ATIS	NELLIS GROUND	NELLIS TOWER	NELLIS CONTROL	TACAN	ILS RWY 21L	NELLIS EAST	NELLIS WEST
270.100 MHz	275.800 121.800	327.000 132.55	317.525	LSV 12X	109.10 Mhz	384.400	385.000

DREAM FOUR DEPARTURE DREAM4 | VALID 2014

NELLIS AFB (KLSV)
LAS VEGAS, NEVADA

ATIS
270.100
NELLIS GROUND
275.800
NELLIS TOWER
327.000
NELLIS CONTROL
317.525
NELLIS DEP/APP EAST
384.400
BLACKJACK
377.800

DREAM
N3710.34
W11459.53

MINTT
LAS 351/38
17,000

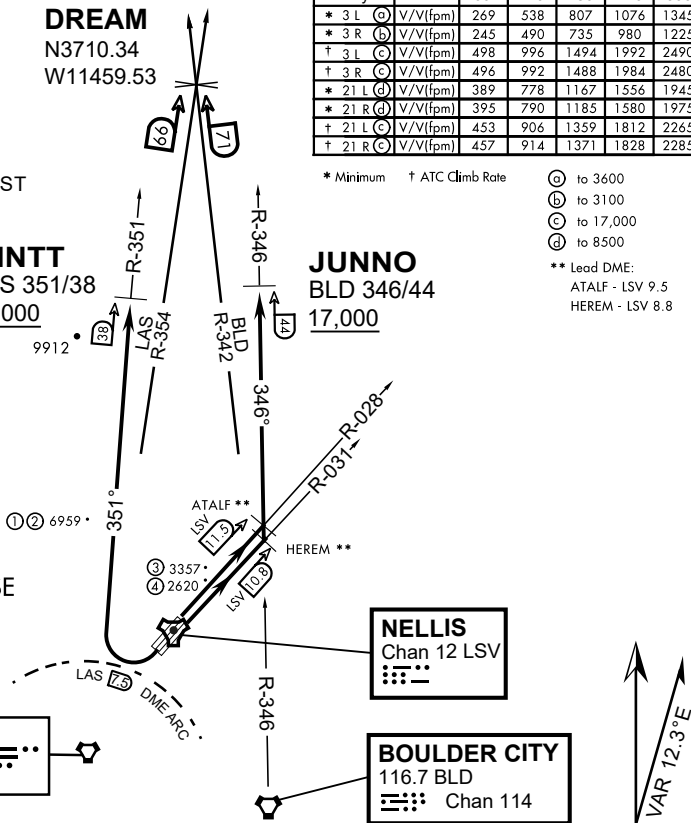
JUNNO
BLD 346/44
17,000

Rwy	Knots	60	120	180	240	300	360
* 3 L (A)	V/V(fpm)	269	538	807	1076	1345	1614
* 3 R (B)	V/V(fpm)	245	490	735	980	1225	1470
† 3 L (C)	V/V(fpm)	498	996	1494	1992	2490	2988
† 3 R (C)	V/V(fpm)	496	992	1488	1984	2480	2976
* 21 L (D)	V/V(fpm)	389	778	1167	1556	1945	2334
* 21 R (D)	V/V(fpm)	395	790	1185	1580	1975	2370
† 21 L (C)	V/V(fpm)	453	906	1359	1812	2265	2718
† 21 R (C)	V/V(fpm)	457	914	1371	1828	2285	2742

* Minimum † ATC Climb Rate

- (A) to 3600
 - (B) to 3100
 - (C) to 17,000
 - (D) to 8500
- ** Lead DME:
ATALF - LSV 9.5
HEREM - LSV 8.8

- ① 12.24 NM from Rwy 21R
- ② 12.40 NM from Rwy 21L
- ③ 5.67 NM from Rwy 3L
- ④ 5.85 NM from Rwy 3R



DEPARTURE ROUTE DESCRIPTION

TAKE-OFF RWY 3L

- Fly runway heading to intercept the LSV TACAN R-028 then direct ATALF, intercept the BLD VORTAC R-346 then direct JUNNO, cross JUNNO at or above 17,000, then via assigned route.

TAKE-OFF RWY 3R

- Fly runway heading to intercept the LSV TACAN R-031 then direct HEREM, intercept the BLD VORTAC R-346 then direct JUNNO, cross JUNNO at or above 17,000, then via assigned route.

TAKE-OFF RWY 21L/R

- Turn right to intercept LAS VORTAC R-351 outbound. Remain North of LAS 7.5 DME turning Northbound. Intercept LAS R-351 between 5000 and 6000, do not proceed West of LAS R-351. Cross MINTT at or above 17,000, then via assigned route.

NOISE ABATMENT PROCEDURES: Fly acc. Nellis Noise Abatement instructions

DREAM FOUR DEPARTURE (DREAM4 • DREAM)

LAS VEGAS, NEVADA

HI-ILS or LOC Z RWY 21L

LOC I-DIQ 109.1	APCH CRS 209°	Rwy ldg 21L 10,051	21R 10,120
		TDZE 1865	1869
		Arpt Elev 1869	

JAL-227 (USAF)

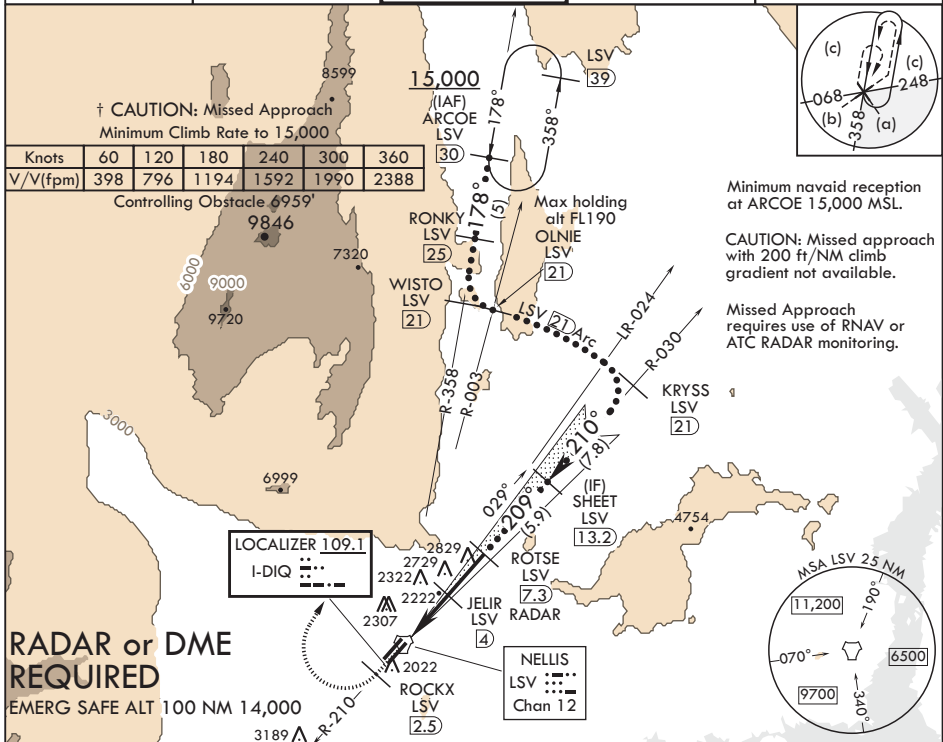
NELLIS AFB (KLSV)

⚠ * When ALS inop, increase CAT CDE RVR to 40, vis to 3/4 mile.
 ** When ALS inop, increase CAT CDE vis to 1 3/4 miles.
 *** Circling not authorized E of Rwy 3R-21L.



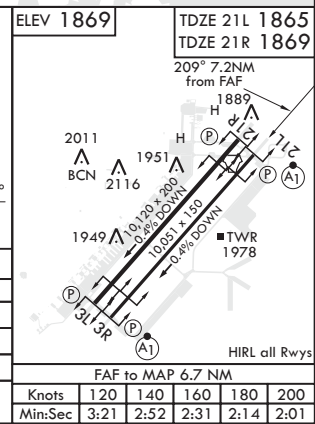
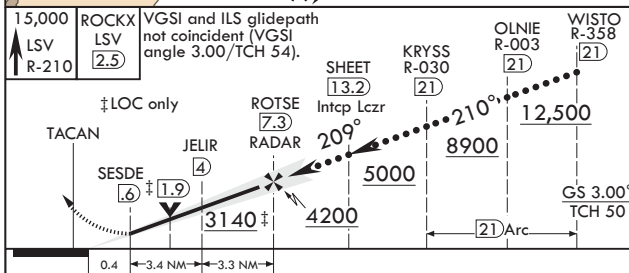
† MISSED APPROACH: Climb to 15,000, intercept LSV TACAN R-210 to 2.5 DME (ROCKX), then climbing right turn heading 020° to join LSV R-358 to ARCOE and hold, continue climb-in-hold to 15,000. Missed approach not for civil use.

ATIS 270.1	APP CON 124.95 273.55	TOWER 132.55 327.0	GND CON 121.8 275.8	CLNC DEL 120.9 289.4
----------------------	---------------------------------	------------------------------	-------------------------------	--------------------------------



**RADAR or DME
EMERG SAFE ALT 100 NM 14,000**

Minimum navaid reception at ARCOE 15,000 MSL.
 CAUTION: Missed approach with 200 ft/NM climb gradient not available.
 Missed Approach requires use of RNAV or ATC RADAR monitoring.



CATEGORY	C	D	E
S-ILS 21L*	2065-24	200	(200-1/2)
S-LOC 21L**	2480-1 3/4	615	(700-1 3/4)
SIDESTEP 21R	2500-1 3/4	631	(700-1 3/4)
Ⓢ CIRCLING***	2620-2 1/4 751 (800-2 1/4)	2840-3 971 (1000-3)	3040-3 1171 (1200-3)

LAS VEGAS, NEVADA
 Amdt 8 03JAN19

36°14'N - 115°02'W

NELLIS AFB (KLSV)

HI-ILS or LOC Z RWY 21L

SW-4, 05 DEC 2019 to 02 JAN 2020

SW-4, 05 DEC 2019 to 02 JAN 2020