

MISSION DATA CARD

OPORD		Callsign		Mission		Date/Time	
3510/2025		Edelweiss 5		Training		062000JAN25	
Task	LCR-Check Testflight					Freq	
AO	Range 64					264.55	
Departure				Recovery			
FYTTR LOW				STRYK			
#	Callsign	Pilot	IFF	TCN	LSR	NET	
-1	Edelweiss 5-1	Cloud	1751	12X	1751	01/01	
-2	Edelweiss 5-2	Kosmoss	1752	75X	1752	01/02	
-3	Edelweiss 5-3	Ghost	1753	75Y	1753	01/03	

LOADOUT

A/A	2xA9X, 2xA120C			GUN	100% HEI-T
A/G	4xBDU-45B			CHF	120
POD				FLR	0
TKS	FPU-8A			FUEL	100%

TOLD

	Takeoff	Target	Joker	Bingo	Land
FUEL	13047		4000	2500	

AIRBASES

	Name	TCN	ATIS	GND	TWR	RWY	Elev	ILS
Dep	Nellis AFB	12X	270.1	275.8	327.0	21L	1850	109.1
Arr	Nellis AFB	12X	270.1	275.8	327.0	21L	1850	109.1
Div	Creech AFB	87X	290.45	275.8	360.6			

FLIGHTPLAN

#	Name	Navaid/Coords/DME	ALT	TOT
1	FYTTR	LSV 269/33 (N36 21.440 W115 41.470)		
2	Beatty	N36 48.540 W116 44.860		
3	STRYK	LSV 282/26 (N36 25.620 W115 30.700)		

COMMS

Radio	Usage
1	11(Atis), 3(NG), 4(NT), 16(BJ), 18(SH), 16(BJ), 4(NT), 3(NG)
2	Inhouse 261.15
3	MIDS A: 22 / B: 44

SUPPORT**Tanker**

Callsign	TCN	Freq	ALT	TAS
ARCO 1	113Y	319.8	FL250	450
	Pos	AR-625: MVA 168/77 (N3717 W11802)		
SHELL 2	115Y	360.8	FL250	430
	Pos	AR-635: MLF 260/127 (N3831 W11542)		

AWACS

Callsign	Freq	ALT	Pos
MAGIC	377.8	FL270	N3749 W11417 - N3713 W11446

OTHER FLIGHTS

Callsign	Mission	Airframe	Freq	TCN	Grpld	Laser
Monster 4	Training	4x A-10C	132.15	1/64	24	141X
AO	Nellis	Task	FAM Flight			
T-Rex 4	Training	3x A-10C	132.25	1/64	25	141X
AO	Nellis	Task	FAM Flight			
Raptor 1	Training	4x F-16C	134.0	1/64		162X
AO	EAST NTTR	Task	CAP			
Rattler 1	Training	2x AH-64D	133.5	1/64		125X
AO	LATNC	Task				
Nazgul 6	Training	4x F-15E	262.45	1/64		156X
AO		Task	Fam Flight			
Raptor 2	Training	4x F-16C	134.5	1/64		162X
AO	EAST NTTR	Task	CAP			

RADIO CHANNELS

#	Freq	Name
1		Flight/Squadron specific
2	289.4	Nellis Clearance Delivery
3	275.8	Nellis Ground
4	327.0	Nellis Tower
5	385.4	Nellis Approach/Departure West
6	273.55	Nellis Approach/Departure East
7	317.525	Nellis Control -- Sally
8	254.4	Nellis Control-- Lee
9	305.6	SOF Bullseye
10	343.725	EMERGENCY SINGLE FRQ
11	270.1	Nellis ATIS
12	360.625	Creech AFB Tower
13	250.1	HAVE QUICK 13
14	251.1	HAVE QUICK 14
15	252.1	HAVE QUICK 15
16	377.8	Blackjack
17	265.0	KC-135 AR-641A
18	360.8	KC-135MPRS AR-635
19	319.8	KC-135MPRS AR-625
20	300.05	KC-135 AR-231V

RAMROD

0	1	2	3	4	5	6	7	8	9
P	R	E	C	L	U	D	I	N	G

KTC 1400 C

	0	1	2	3	4	5	6	7	8	9
A	KSRL	WEG	HMX	IY	OA	DTN	FU	VP	JC	BQ
B	MBDY	SNC	KVT	WO	AU	RPQ	GH	LX	FJ	IE
C	VNJC	LXE	GTW	BA	YH	DOS	QF	KI	UM	PR
D	PCTX	IYS	HUL	FK	ER	JWV	ON	BA	GD	MQ
E	UKJL	GCF	QTW	IM	AH	XPO	DN	EB	YS	RV
F	ELMX	BWC	HND	JT	OF	SAU	YV	GR	KQ	IP
G	RUVA	BDO	TQF	PX	KG	MSC	LW	JH	YE	NI
H	MIGX	NVL	COF	PU	YT	WRQ	SE	DB	KA	JH
I	XMBF	SDE	JPY	TG	WQ	OUL	NV	AR	IH	CK
J	TWMC	QFG	JAO	VH	NL	IRY	KS	UE	PX	DB
K	REHY	JQN	XWO	CG	DL	TIS	UM	FP	BV	KA
L	QLTW	HMO	YSR	BV	DJ	XEF	GC	NI	PK	AU
M	SFMN	DWC	QKI	XB	YO	VEU	TL	JP	GH	RA
N	APLB	EFH	TDG	XV	WR	QIO	KN	SM	UJ	YC
O	MBLS	GXN	DFI	OJ	HP	WRK	UE	VT	QC	YA
P	SBAO	WRQ	DFJ	XV	LN	IYU	CM	PH	TG	EK
Q	CRTK	ALQ	DIP	SN	FO	BXG	MJ	WU	HV	YE
R	STGU	QJY	RAI	HN	CD	MXE	FO	PL	VB	WK
S	VHSI	QXW	KJD	BF	PL	OTM	CG	YU	AR	EN
T	IUMP	FTJ	KVS	LC	QY	HRB	DO	EW	AN	XG
U	EUIQ	CXK	SNF	GB	HM	YRL	AP	VW	DO	JT
V	GHYF	CWI	DLN	ES	PK	BXT	QO	AM	UR	JV
W	ADRQ	JYF	GHX	BN	TI	WKV	SM	CU	EP	LO
X	GAMP	CJW	UTY	RE	SO	VDN	IB	FH	KQ	XL
Y	KMRL	XPF	UWJ	IT	GQ	VND	OB	SA	EY	HC

NAVAIDS

Id	Name	Channel	Position	Elevation
BCE	Bryce Canyon	75	N3741.35 W11218.23	9040
BIH	Bishop	33	N3722.62 W11821.99	4114
BLD	Boulder	114	N3559.75 W11451.82	3650
BTY	Beatty	94	N3648.54 W11644.86	2925
CDC	Cedar City	120	N3747.24 W11304.90	5463
DAG	Daggett	79	N3457.75 W11634.69	1760
EED	Needles	99	N3445.96 W11428.43	650
GFS	Goffs	91	N3507.87 W11510.59	4019
GRL	Groom Lake	18	N3713.91 W11548.16	4475
HEC	Hector	74	N3447.83 W11627.78	1854
ILC	Wilson Creek	110	N3815.02 W11423.65	9318
INS	Creech AFB	87	N3635.20 W11540.12	3101
LAS	McCarran Intl	116	N3604.78 W11509.59	2142
LSV	Nellis	12	N3614.68 W11501.50	1864
MLF	Milford	58	N3821.62 W11300.79	4977
MMM	Mormon Mesa	90	N3646.16 W11416.65	2120
MVA	Mina	98	N3833.92 W11801.97	7860
OAL	Coale Dale	124	N3800.20 W11746.23	4800
PGS	Peach Springs	57	N3537.48 W11332.67	4754
TPH	Tonopah Muni	119	N3801.84 W11702.01	5330
TQQ	Silverbow	77	N3748.00 W11647.00	5500
UTI	St George	23	N3705.29 W11335.53	2871



RWY 3L-21R
 PCN 46 R/C/W/T
 RWY 3R-21L
 PCN 51 R/C/W/T
 2017

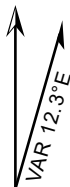
PAR	RWY	CAT	MINIMA		ARP	ELEV	Scale 1:35'500	
	21L	A B D E	2057 - 0.8 200 (200-0.8/1.6)	GS 3°	36° 14.060° N 115° 01.058° W	1857 [ft] 566 [m]	0 300 600 900 1200 1500 [m]	
	3R	A B D E	2057 - 0.8 200 (200-0.8/1.6)	GS 3°			0 1000 2000 3000 4000 5000 [ft]	
SRA	21R	A C D E	2257 - 1.2 350 (350-1.2/1.6)					
	3L	A C D E	2257 - 1.2 350 (350-1.2/1.6)					

RWY	TORA	TODA	ASDA	LDA	PSN	THR	ALS
21L	10051 [ft] 3063 [m]	11051 [ft] 3368 [m]	11051 [ft] 3368 [m]	10051 [ft] 3063 [m]	36°14.043' N	115°01.018' W	⊕
3R	10120 [ft] 3084 [m]	11120 [ft] 3398 [m]	11120 [ft] 3398 [m]	10120 [ft] 3084 [m]	36°13.029' N	115°02.038' W	

ATIS	NELLIS GROUND	NELLIS TOWER	NELLIS CONTROL	TACAN	ILS RWY 21L	NELLIS EAST	NELLIS WEST
270.100 MHz	275.800 121.800	327.000 132.55	317.525	LSV 12X	109.10 Mhz	384.400	385.000

ATIS
270.100
NELLIS GROUND
275.800
NELLIS TOWER
327.000
NELLIS CONTROL
317.525
NELLIS DEP/APP EAST
384.400
BLACKJACK
377.800

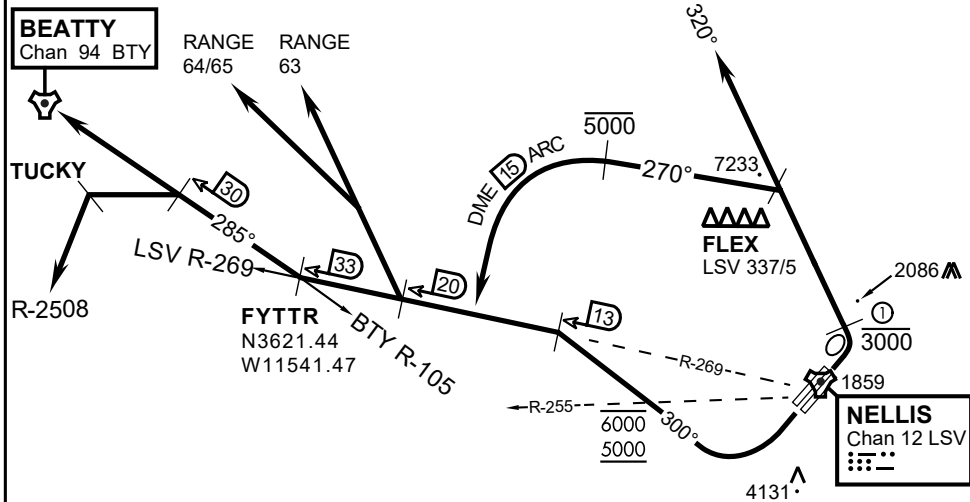
CAUTION: If unable to comply
with restrictions advise ATC
prior to departure.



VMC ONLY

PILOT RESPONSIBLE FOR TERRAIN AVOIDANCE

① 4 NM from RWY 3L/R



DEPARTURE ROUTE DESCRIPTION

TAKEOFF RWY 3L/R:

- Remain below 3,000' MSL until north of Race Track and turned westbound.
- Turn left within 4NM of Nellis direct FLEX. Fly north of FLEX and turn left heading 270°.
- Intercept LSV 15 DME ARC at or below 5,000' MSL.
- ARC south, intercept LSV R-269 outbound. Maintain VFR.

TAKEOFF RWY 21L/21R:

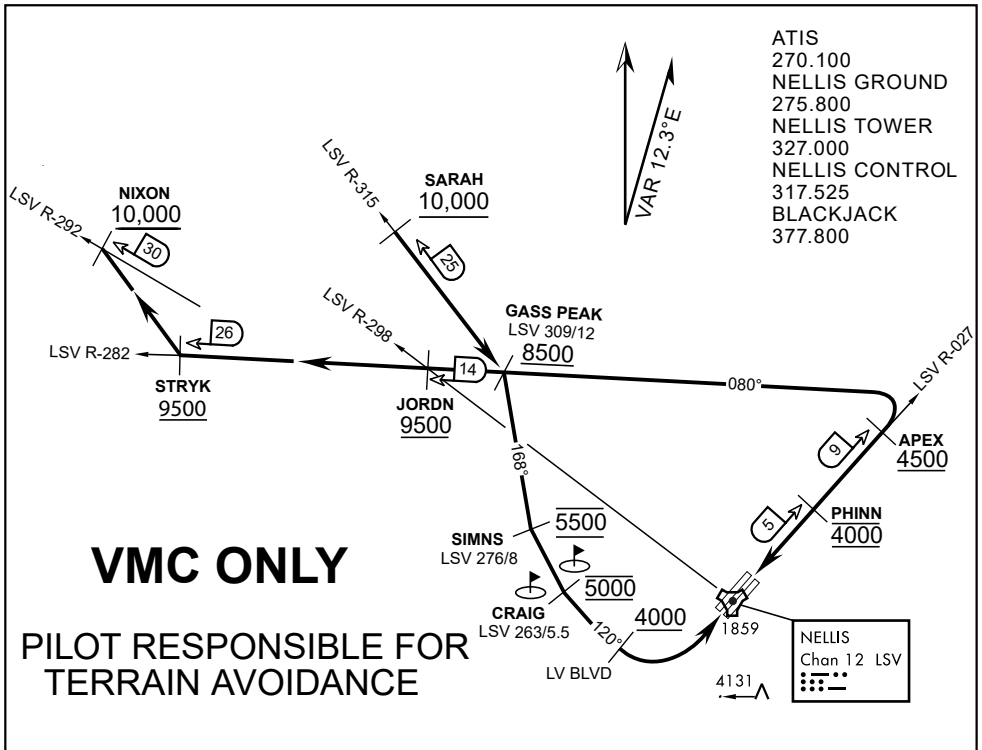
- Follow Noise Abatement Procedures.
- Fly runway heading until past Golf Course, turn right heading 300°.
- Cross LSV R-255 between 5,000' and 6,000' , intercept and proceed outbound on the LSV R-269.Recommend climb to 8,500' MSL or appropriate VFR altitude for overflight of North Las Vegas Training Area. Fly routing for appr. mission/transition.

TRANSITIONS:

- R-4806:** Turn right at the LSV 269/20 direct to assigned ranges.
- BEATTY:** Turn right at FYTTR direct BTY via the BTY R-105
- R-2508:** Turn right at the FYTTR, intercept the BTY 105/30, direct TUCKY, then direct R-2508

FYTTR DEPARTURE AND TRANSITIONS (FYTTR LOW)

v.15 13NOV20 NTR NAV CHART



APPROACH ROUTE DESCRIPTION

APPROACH RWY 3L/R

Cross STRYK at or above 9,500' MSL, proceed direct GASS PEAK. Cross JORDN at or above 9,500' MSL, cross GASS PEAK at or above 8,500' MSL. Proceed direct SIMNS and cross at 5,500' MSL. Cross Las Vegas Blvd at or above 4,000' MSL then to 3,500' MSL for Initial. Remain within 4 DME if LSV on turn to final.

VFR STRAIGHT-IN RWY 3L/R

Depart CRAIG & descend to be at 3,000' MSL by Las Vegas Blvd. Do not descend below 3,000' MSL until within 5 DME of LSV or 4 NM of the runway on turn to final.

APPROACH RWY 21L/R

Cross STRYK at or above 9,500' MSL, proceed direct GASS PEAK. Cross JORDN at or above 9,500' MSL, cross GASS PEAK at or above 8,500' MSL. Cross APEX at or above 4,500' MSL then direct 5NM initial. Descend to cross PHINN at 4,000' MSL, Inside 5 NM descend to 3,500' MSL.

VFR STRAIGHT-IN RWY 21L/R

Cross APEX at 4,000' MSL. Descend to be at 3,000' MSL at PHINN. Descend to 3,000' MSL at LSV 027/5.

RANGE 63B EXIT

- SOUTH:** Via NIXON at or above 10,000' MSL, then direct STRYK.
- EAST:** Via SARAH at or above 10,000' MSL, then direct GASS PEAK.



INDIAN SPRINGS, NEVADA

TACAN INS Chan 87	APCH CRS 065°	Rwy ldg TDZE 3133	9002 3113
		Arpt Elev 3113	

INDIAN SPRINGS AF AUX (KINS)

▼ * MISSED APPROACH: Straight ahead to INS TACAN, intercept INS R-outbound, cross 17 DME at or above 9500, then direkt KSV TACAN 114

NELLIS CON

CREECH AFB TOWER
118.30 60.60

GND CON

NOT FOR CIVIL USE

FOR USE UNDER BASIC VFR WEATHER MINIMUMS ONLY

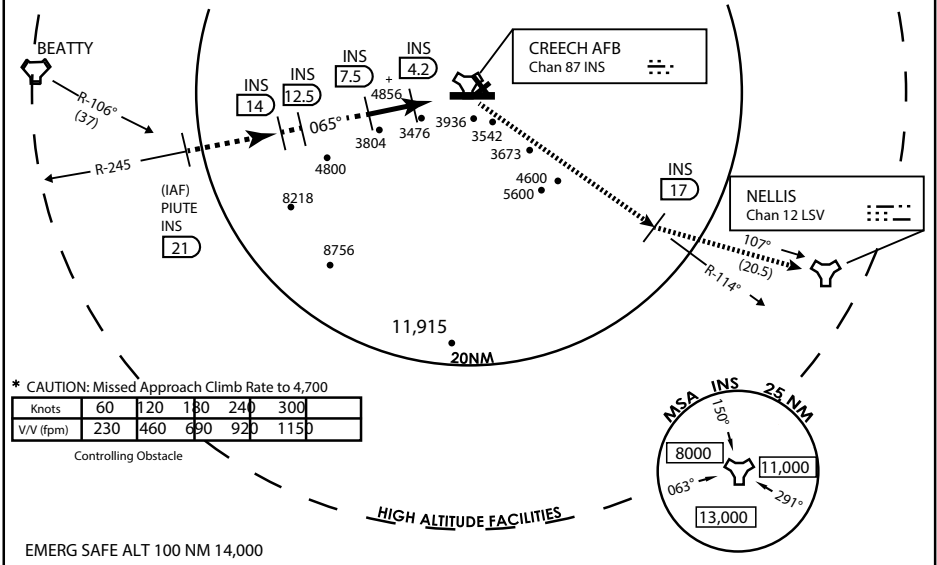
PILOT IS RESPONSIBLE FOR TERRAIN/OBSTACLE AVOIDANCE AND APPROPRIATE VFR CLOUD CLEARANCE FOR ALL

CAUTION: Descent gradients are greater than allowed under standard TERPS criteria and inbound course does not meet straight-in criteria

CAUTION: Final approach course crosses Runway centerline at MIDFIELD. Maneuvering left of course required prior to landing. Do not Maneuver farther north than the INS R- 258

Modified by viaBog 66 for use with DCS
NOT FOR REAL LIFE NAVIGATION

Modified by viaBog 66 for use with DCS
NOT FOR REAL LIFE NAVIGATION

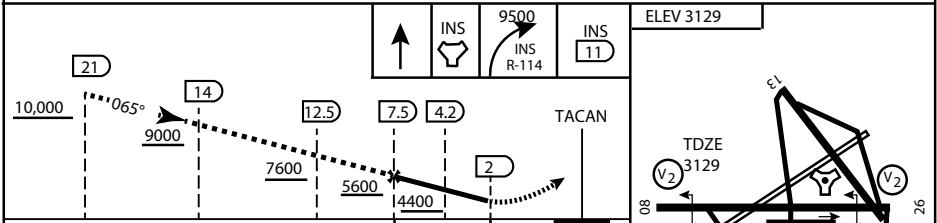


* CAUTION: Missed Approach Climb Rate to 4,700

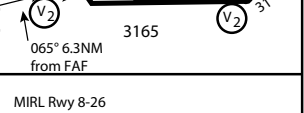
Knots	60	120	180	240	300
V/V (fpm)	230	460	690	920	1150

Controlling Obstacle

HIGH ALTITUDE FACILITIES



CATEGORY	A	B	C	D	E
S-8	3760-1 ½	627 (700-1 ½)	3760-1¾ 627 (700-1¾)	3760-2 627 (700-2)	3760-2¼ 627 (700-2¼)
CIRCLING	NOT AUTHORIZED				



CITY OF INDIAN, NEVADA

INDIAN SPRINGS AF AUX (KINS)

(FOR DAY VFR USE ONLY)



AIRPORT DIAGRAM

476 VFG

CREECH AFB (KINS)
INDIAN SPRINGS, NEVADA

ATIS
 122.5
 CREECH TOWER
 118.4 360.7 38.65
 GND CON
 118.3 275.8
 CLNC DEL

115°42'W

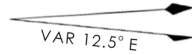
FIELD
 ELEV
 3127

80

972 X 150

HOT CARGO PAD

BAK-12


 VAR 12.5° E

WEST EOR

115°41'W

476 VFG JAN 2019

476 VFG JAN 2019

CONTROL TOWER
 BASE OPS

RPA LOLA WEST

RPA LOLA EAST

LOLA / HUNG ORDNANCE

199 X 100
 ELEV 3127
 RUNWAY 31/13
 MQ/RQ-1 ONLY

258.5°

860 X 100
 313.8°

4064 X 100
 133.8°

BAK-12

ELEV 3127

115°40'W

EAST EOR

1030 X 150

26

AIRPORT DIAGRAM

INDIAN SPRINGS, NEVADA
CREECH AFB (KINS)