

MISSION DATA CARD

OPORD	Callsign	Mission	Date/Time			
3508/2025	Tiger 1	Training	052000JAN25			
Task						Freq
AO						261.15
Departure			Recovery			
VFR Depature			CASE III			
#	Callsign	Pilot	IFF	TCN	LSR	NET
-1	Tiger 1-1	Ghost	1011	1Y	1551	01/01

LOADOUT

A/A	2xA9X, A120C	GUN	100% HEI-T
A/G		CHF	90
POD	TGP	FLR	30
TKS	FPU-8A	FUEL	100%

TOLD

	Takeoff	Target	Joker	Bingo	Land
FUEL	13047			3500	1500

AIRBASES

	Name	TCN	ATIS	GND	TWR	RWY	Elev	ILS
Dep	Rovaniemi	14X	282.8	282.5	250.55	21	643	111.7
Arr	CVN-71 USS Theodore Roosevelt	71X		ICLS 7	304.0			
Div	Bodo	45X	320.7		250.75	25	19	110.3

COMMS

Radio

Usage

2

Inhouse 261.15

3

MIDS A: 22 / B: 44

SUPPORT**Tanker**

Callsign	TCN	Freq	ALT	TAS
SHELL 1	41Y	360.8		

Pos

AWACS

Callsign	Freq	ALT	Pos
HEIMDALL	348.7		
LOKI	347.8		

OTHER FLIGHTS

Callsign	Mission	Airframe	Freq	TCN	GrpId	Laser
Tiger 2	Training	2x F/A-18C	262.15	1/64		156X
AO	ESR01	Task	DEAD			

RADIO CHANNELS

#	Freq	Name
1		Flight/Squadron specific
2	282.8	Rovaniemi ATIS
3	282.5	Rovaniemi Ground
4	250.55	Rovaniemi Tower
5	320.7	Bodo ATIS
6	250.75	Bodo Tower
7	235.45	Kallax ATIS
8	250.3	Kallax Tower
9	265.0	Texaco-1 KC-135 Medium / Slow 71Y
10	319.8	Arco-1 KC-135 High / Fast 22Y
11	360.8	Shell-1 KC-135 MPRS High / Fast 41Y
12	304.0	CVN-71 Rough Rider (RRR) 71X
13	303.0	LHA-1 Tarawa (TWA) 79X
14	247.8	S-3B Mauler-1 (MAU) 64Y
15	347.8	Loki (E-2D)
16	348.7	Heimdall (E-3A)
17	242.17	ESR02 - CAS Range Operator
18	34.7	ESR02 - JTAC Odin
19	270.5	Blue
20	270.75	Red

RAMROD

0	1	2	3	4	5	6	7	8	9
P	A	T	R	O	N	Y	M	I	C

KTC 1400 C

	0	1	2	3	4	5	6	7	8	9
A	TEOJ	ACR	VIX	HU	NW	QPF	DG	SY	LB	KM
B	YXTM	CJK	EAO	SD	RB	GFU	HQ	WI	VL	NP
C	WHUA	PBK	JNE	RD	SQ	YTM	IG	LC	XF	OV
D	QIOM	YRU	AJF	VG	LK	PTB	WD	SN	HX	EC
E	CFTE	ARO	XLP	WN	YJ	DVU	HK	IB	MQ	GS
F	JGTS	UPI	YLK	CR	VX	HBN	FM	DE	AW	QO
G	ARNC	XFQ	GMS	JW	IU	BVL	TH	YK	PO	ED
H	BSER	HFD	YQX	OI	KV	PMA	WJ	UG	LT	CN
I	GIRV	EFQ	BAH	JW	OT	YXL	MN	KU	CD	SP
J	CRTJ	QKM	HDA	XN	OU	BFL	EY	IP	VW	GS
K	UFRW	QBA	LYP	VC	TM	JKN	ES	GH	DO	IX
L	VUMH	SIQ	EFP	YN	JR	DAL	BG	XC	KO	WT
M	ANHO	JFB	GYD	SP	VE	IKW	CX	TQ	ML	UR
N	DOQT	XCH	VJI	GR	WS	BUK	EA	NL	FM	YP
O	GBNT	WLS	KFE	UP	RA	IHC	YQ	DM	JO	VX
P	MQYA	CFP	WBV	IO	UH	JGD	SR	TX	LE	KN
Q	XHKQ	JUT	IBY	VD	CN	RGP	EF	AO	SL	MW
R	WJLX	VGM	OHY	AS	QU	NCK	IE	FR	PD	BT
S	LWQM	KSD	FGY	EC	OJ	PXB	IR	VN	UH	TA
T	PXNU	EQO	VAT	MY	BI	GRW	FS	LH	CK	DJ
U	FDTH	ANG	RWE	CJ	PV	SQI	OK	BM	XU	LY
V	BNXP	ROV	GLD	CF	JI	QWE	MY	TU	KA	SH
W	ESTL	OAW	FHV	QU	KR	JYP	BI	DX	MC	GN
X	QEHI	FMJ	LUB	CV	DP	OSK	XA	NT	GR	YW
Y	TJQI	PCK	FSA	RE	WU	XGH	OL	VD	BY	NM

NAVAIDS

Id	Name	Channel	Position	Elevation
BOO	Bodo	45	N67 15.838 E014 20.046	43
BNK	Banak	47	N70 03.937 E024 58.181	17
OYA	Andoya	28	N69 17.175 E016 08.658	19

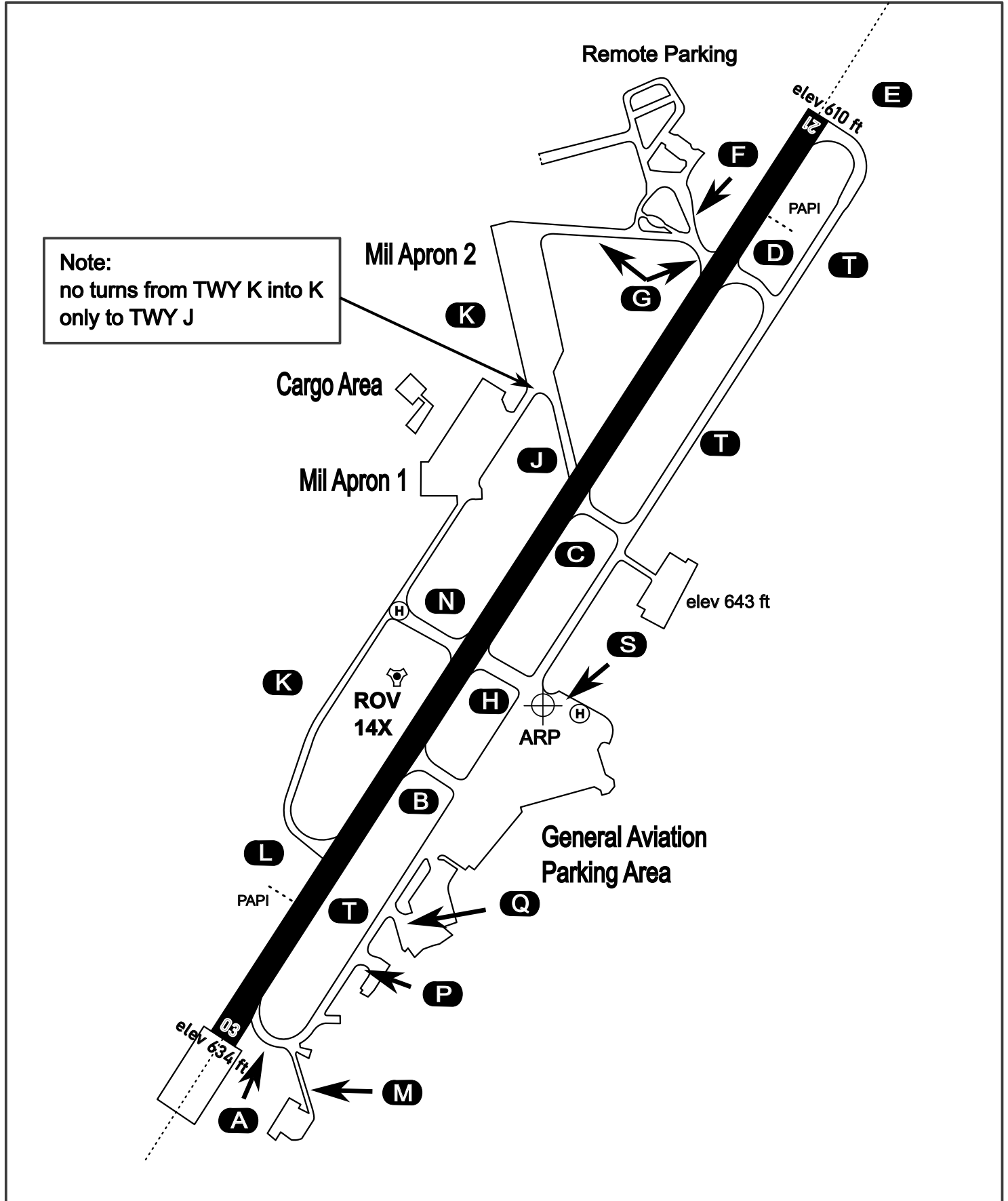
AERODROME CHART

Rovaniemi Aerodrome

ARP N66° 33' 42" E025° 49' 51"

elev 643 ft

ROVANIEMI, FINLAND

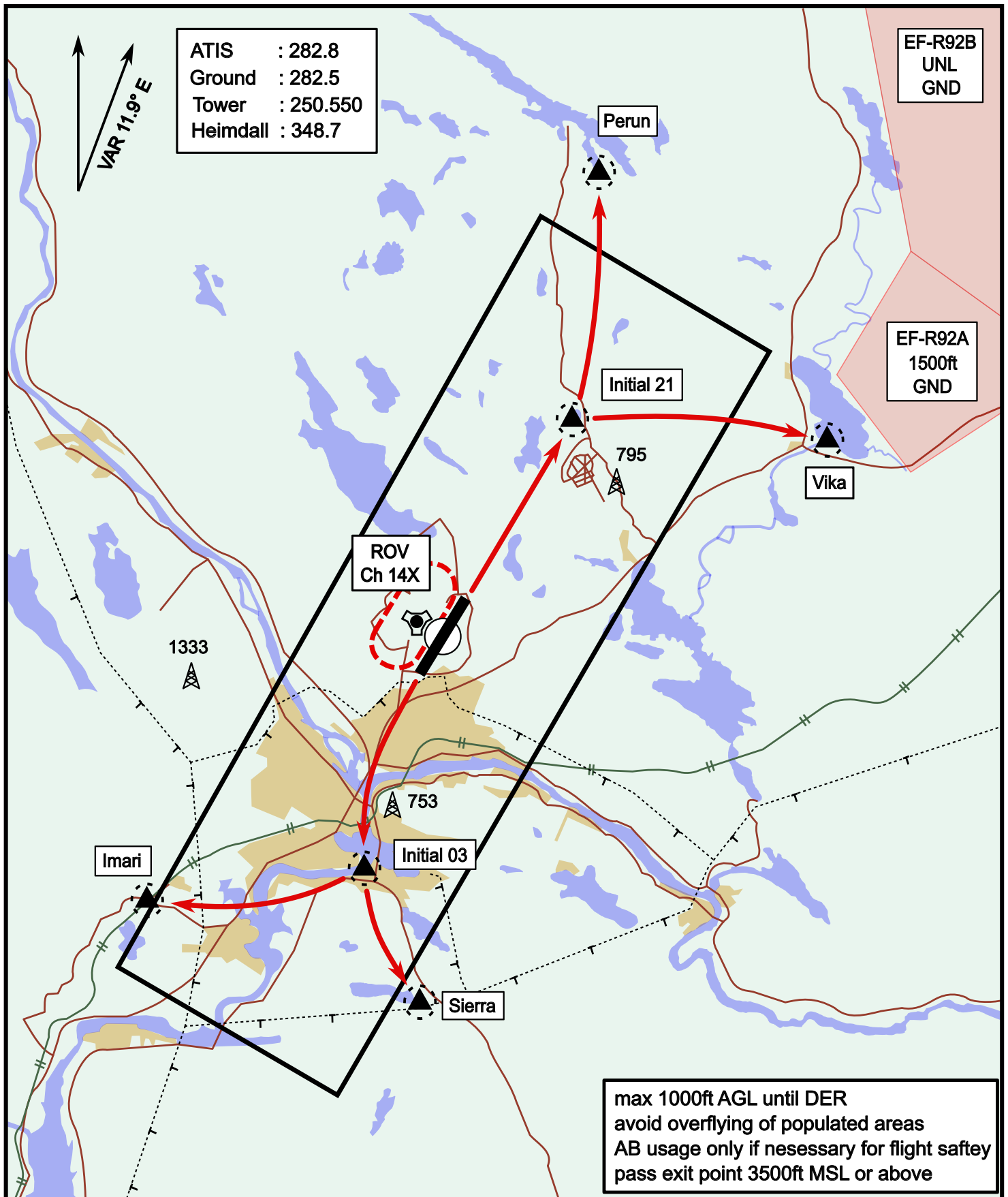


ATIS	Ground	Tower	Radar
282.800	282.500	250.550	348.700

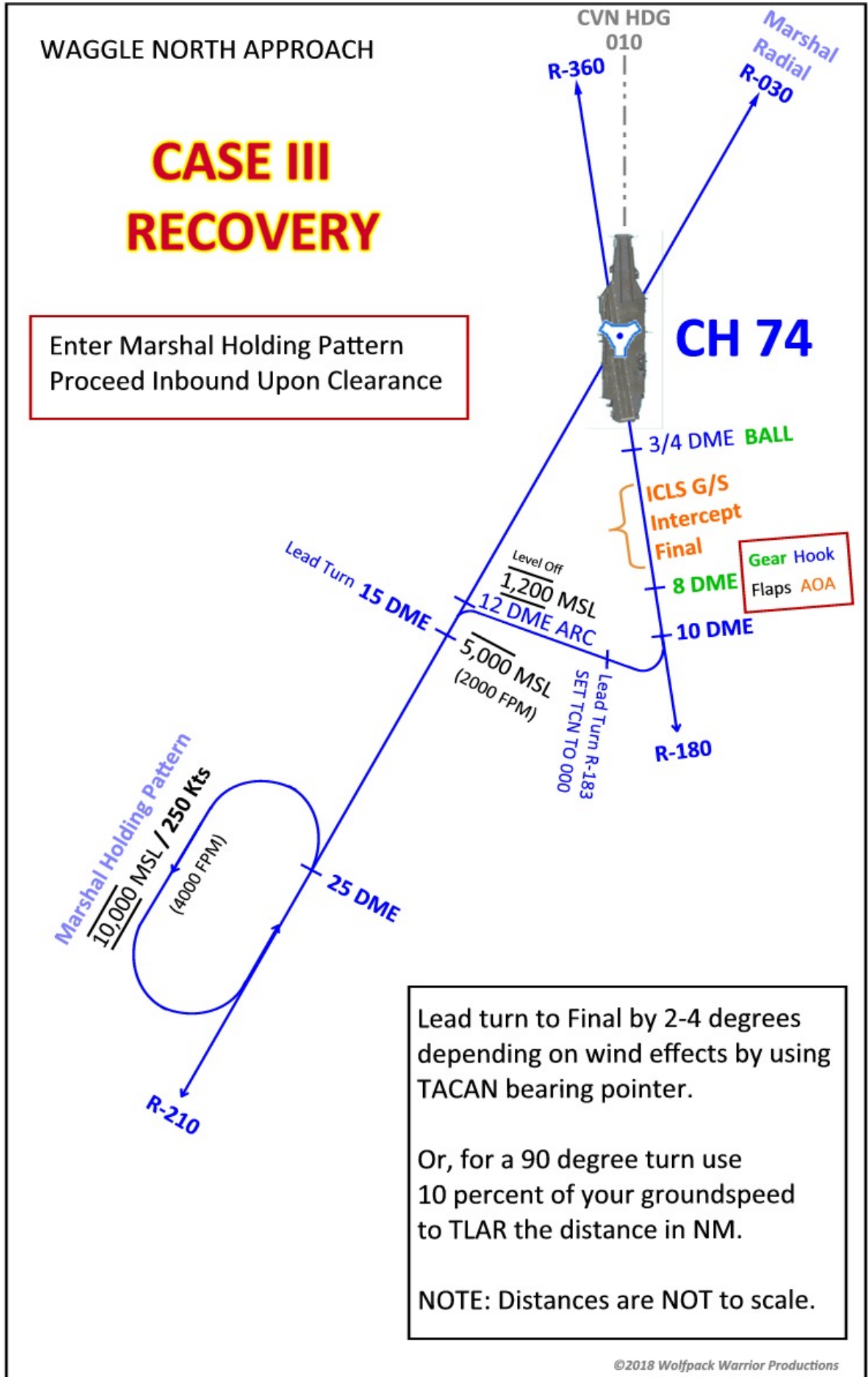
Visual Departure Jet

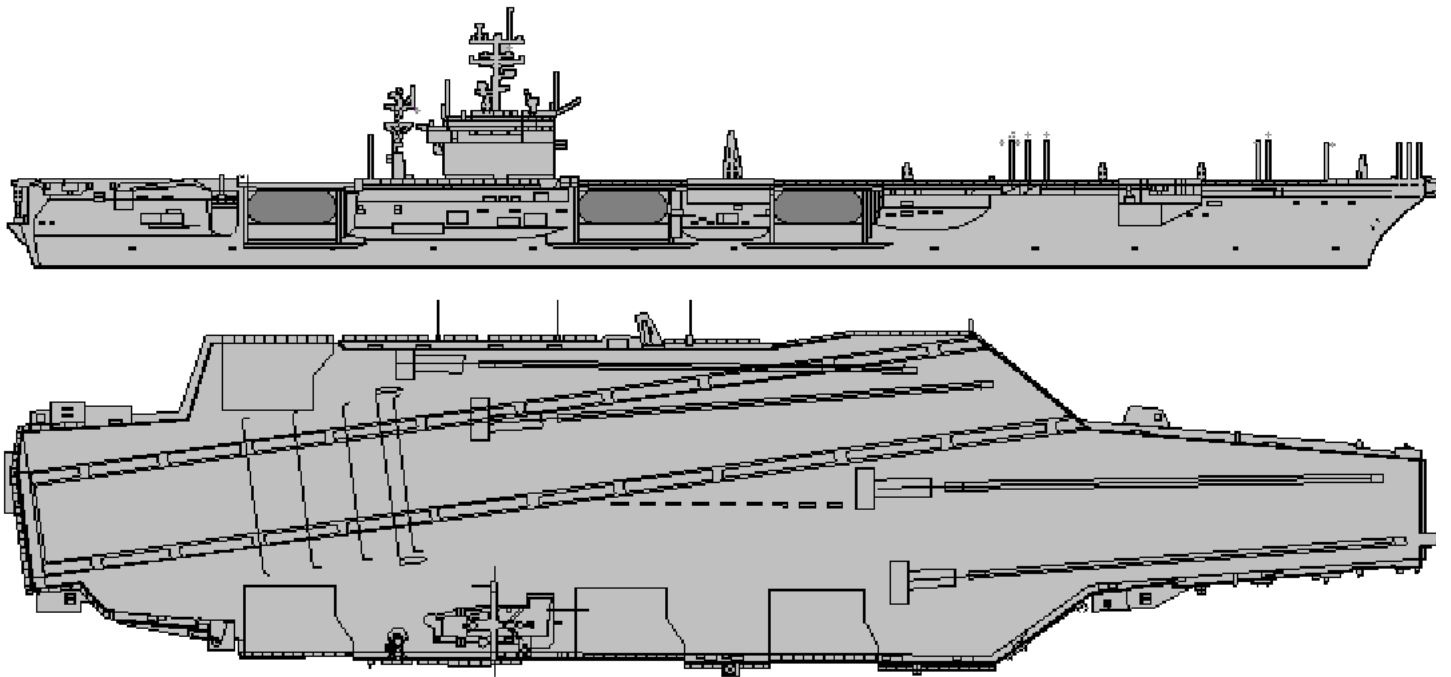
elev 643 ft

Rovaniemi, Finland



Vika	N66° 37.474 / E026° 13.557	Sierra	N66° 25.711 / E025° 46.610
Perun	N66° 44.135 / E026° 01.630	Imari	N66° 28.406 / E025° 31.291
Initial21	N66° 38.421 / E025° 58.682	Initial03	N66° 28.793 / E025° 44.105

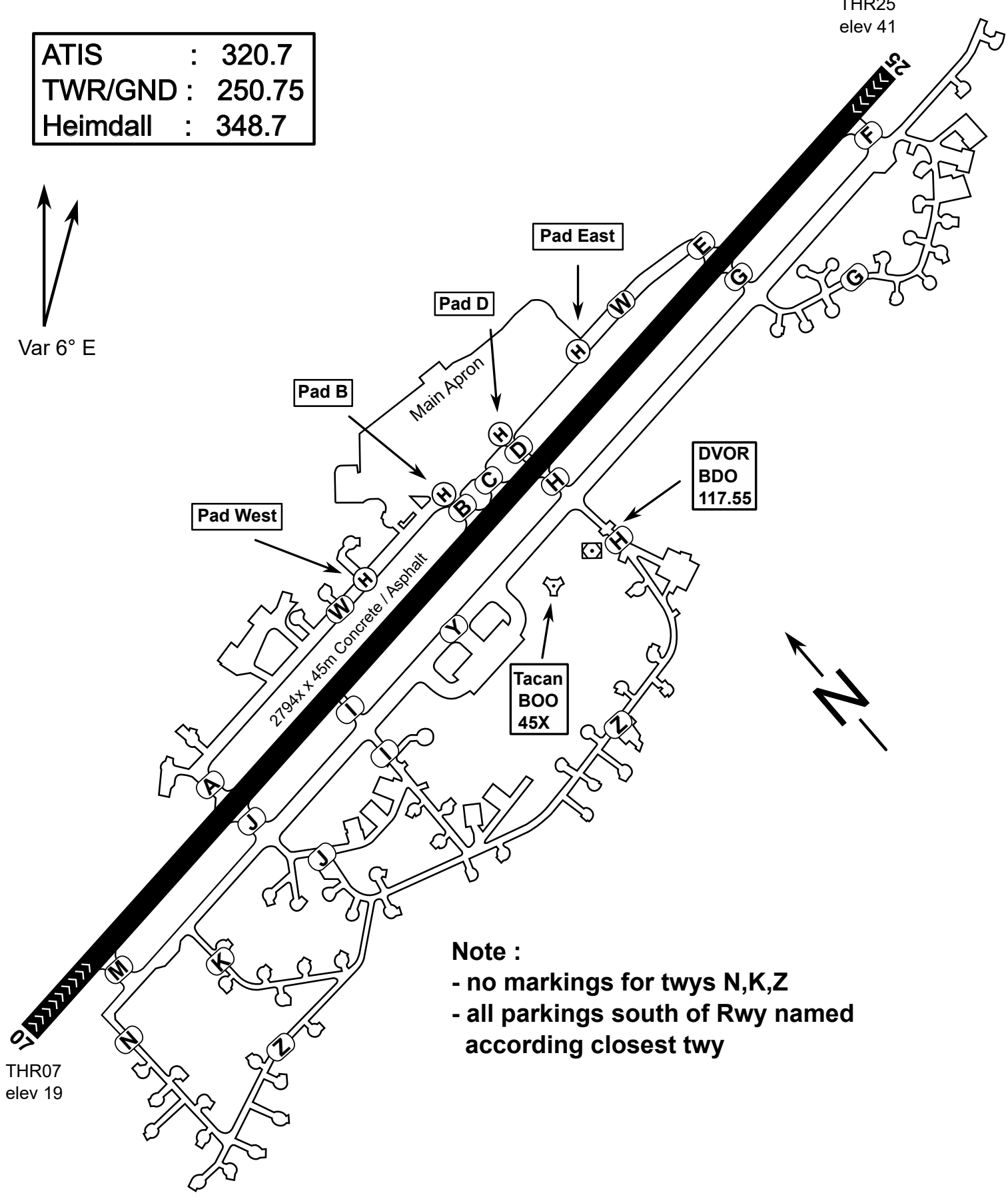
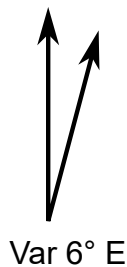




NOT AVAILABLE

ATIS	: 320.7
TWR/GND	: 250.75
Heimdall	: 348.7

THR25
elev 41



THR07
elev 19

Note :

- no markings for twys N,K,Z
- all parkings south of Rwy named according closest twy