

**MISSION DATA CARD**

OPORD		Callsign		Mission		Date/Time		
3501/2025		Pontiac 1		Training		032000JAN25		
Task						Freq		
AO						264.05		
Departure				Recovery				
VFR Helicopter				VFR Helicopter				
#	Callsign		Pilot		IFF	TCN	LSR	NET
-1	Pontiac 1-1		Butcher		3411	1Y	1701	

**LOADOUT**

A/A						GUN	100% none
A/G						CHF	120
POD						FLR	120
TKS						FUEL	100%

**TOLD**

	Takeoff	Target	Joker	Bingo	Land
FUEL	6734				

**AIRBASES**

	Name	TCN	ATIS	GND	TWR	RWY	Elev	ILS
Dep	Rovaniemi	14X	282.8	282.5	250.55	21	643	111.7
Arr	Rovaniemi	14X	282.8	282.5	250.55	21	643	111.7

**FLIGHTPLAN**

#	Name	Navaid/Coords/DME	ALT	TOT
1	RVNInit03	N66 28.793 E025 44.105	500	
2	SIERRA	N66 25.711 E025 46.610	500	
3	VIKA	N66 37.474 E026 13.557	500	

**SUPPORT****AWACS**

Callsign

Freq

ALT

Pos

HEIMDALL

348.7

**OTHER FLIGHTS**

Callsign	Mission	Airframe	Freq	TCN	GrpId	Laser
Tiger 1	Training	2x F/A-18C	261.15	1/64		155X
AO		Task				

## RADIO CHANNELS

#	Freq	Name
1		Flight/Squadron specific
2	282.8	Rovaniemi ATIS
3	282.5	Rovaniemi Ground
4	250.55	Rovaniemi Tower
5	320.7	Bodo ATIS
6	250.75	Bodo Tower
7	235.45	Kallax ATIS
8	250.3	Kallax Tower
9	265.0	Texaco-1   KC-135   Medium / Slow   71Y
10	319.8	Arco-1   KC-135   High / Fast   22Y
11	360.8	Shell-1   KC-135 MPRS   High / Fast   41Y
12	304.0	CVN-71 Rough Rider (RRR)   71X
13	303.0	LHA-1 Tarawa (TWA)   79X
14	247.8	S-3B Mauler-1 (MAU)  64Y
15	347.8	Loki (E-2D)
16	348.7	Heimdall (E-3A)
17	242.17	ESR02 - CAS Range Operator
18	34.7	ESR02 - JTAC Odin
19	270.5	Blue
20	270.75	Red

**RAMROD**

0	1	2	3	4	5	6	7	8	9
S	H	O	P	L	I	F	T	E	D

**KTC 1400 C**

	0	1	2	3	4	5	6	7	8	9
A	XJVT	FYL	KIE	WB	AS	HPO	DU	QR	GC	NM
B	SDXC	UVN	WYR	QT	IG	BMO	EF	KL	PA	HJ
C	PXJM	OLB	QTF	WY	NS	RGU	HD	KV	AC	EI
D	VT OG	RLE	AJF	PM	YU	IXC	NK	HQ	BD	SW
E	FHJT	REA	DCP	YI	GB	WNU	QO	SK	MV	LX
F	IFBD	NEO	LAK	SV	CQ	MHW	JU	YX	GP	TR
G	MNSG	BIF	HXD	YV	WT	OEP	LA	QK	UR	JC
H	YCQJ	VHF	RTS	DL	GE	IWK	PB	UN	MX	OA
I	BISJ	DRU	PHF	GL	TM	AXV	NE	OK	WY	CQ
J	CSKF	NHV	ORP	IB	DA	QYW	JU	XT	LM	GE
K	CLXF	NGJ	RAP	OI	HB	DUM	KT	YV	SQ	EW
L	BALT	IEJ	CPX	KM	GH	DNR	WQ	YS	UO	FV
M	AIML	VGC	KXR	BN	TU	SQD	FY	JP	EO	WH
N	JTBY	DEQ	UPV	MA	LC	RFK	HS	OW	GI	NX
O	DNTB	RSX	OKI	ME	LJ	QAP	UC	HF	YW	VG
P	RFVY	MON	HDX	EC	WI	LTG	PU	KA	BS	QJ
Q	LIPX	TEH	BJA	WQ	SK	NUV	FD	MR	CG	OY
R	FQLA	OJS	XYR	TP	EV	WDH	KC	BN	IM	UG
S	UHSX	VFO	RAE	NK	LT	PBW	GC	DY	IJ	MQ
T	NAIO	FSG	URE	CB	TK	HVX	WD	QP	JM	YL
U	SVEC	UAI	HTO	LR	DG	PYQ	FN	MX	KB	WJ
V	ANUF	HCD	PIO	WY	KV	JEX	RL	GQ	SB	MT
W	GQDH	NSU	EIF	BY	JK	TVX	WR	OM	CL	AP
X	JLSW	EHB	OCT	PF	NK	MYV	IX	AQ	GU	DR
Y	BX HJ	UPW	GLM	NO	DI	SVF	CY	KQ	AE	RT

**NAVAIDS**

Id	Name	Channel	Position	Elevation
BOO	Bodo	45	N67 15.838 E014 20.046	43
BNK	Banak	47	N70 03.937 E024 58.181	17
OYA	Andoya	28	N69 17.175 E016 08.658	19

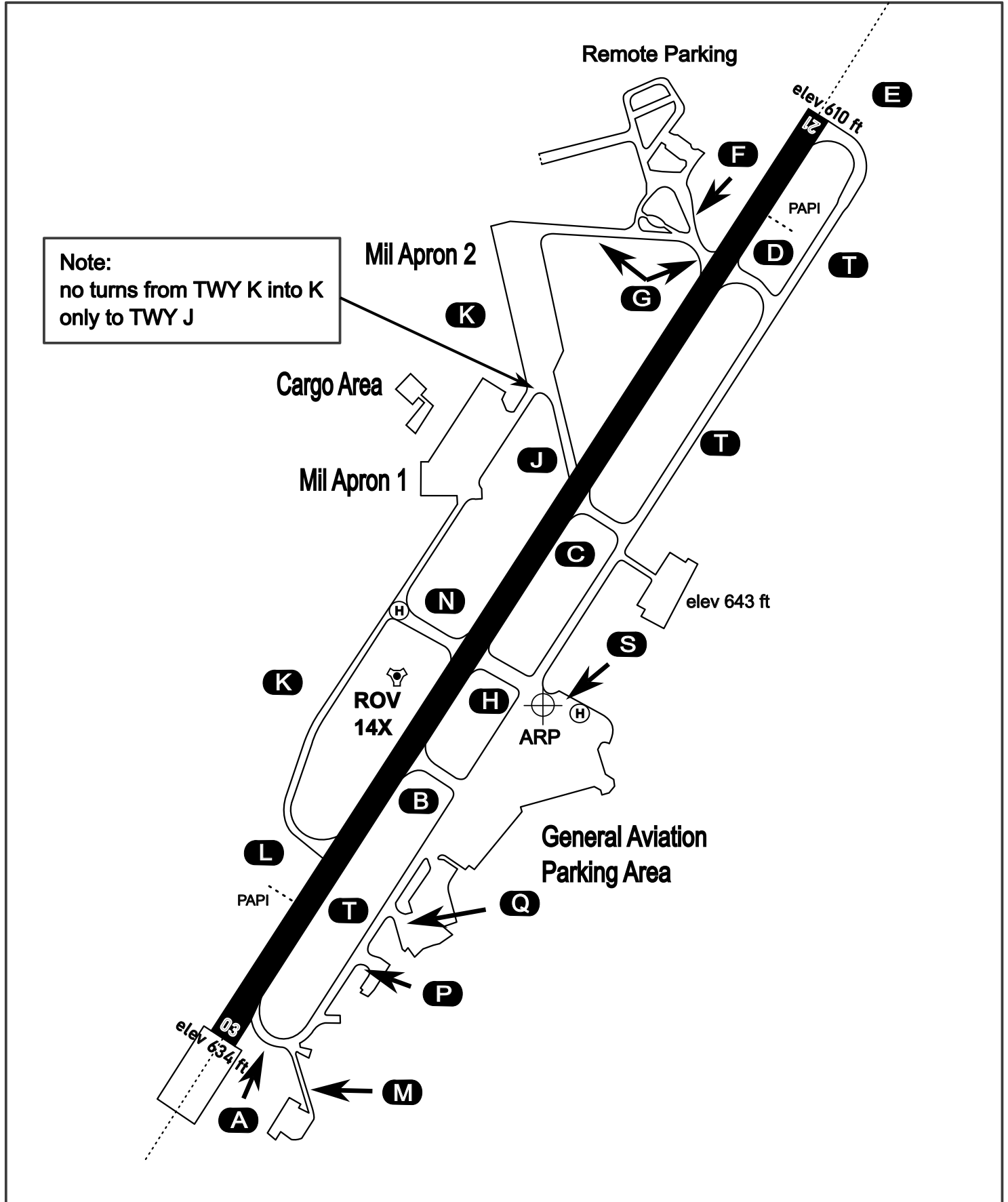
# AERODROME CHART

Rovaniemi Aerodrome

ARP N66° 33' 42" E025° 49' 51"

elev 643 ft

## ROVANIEMI, FINLAND



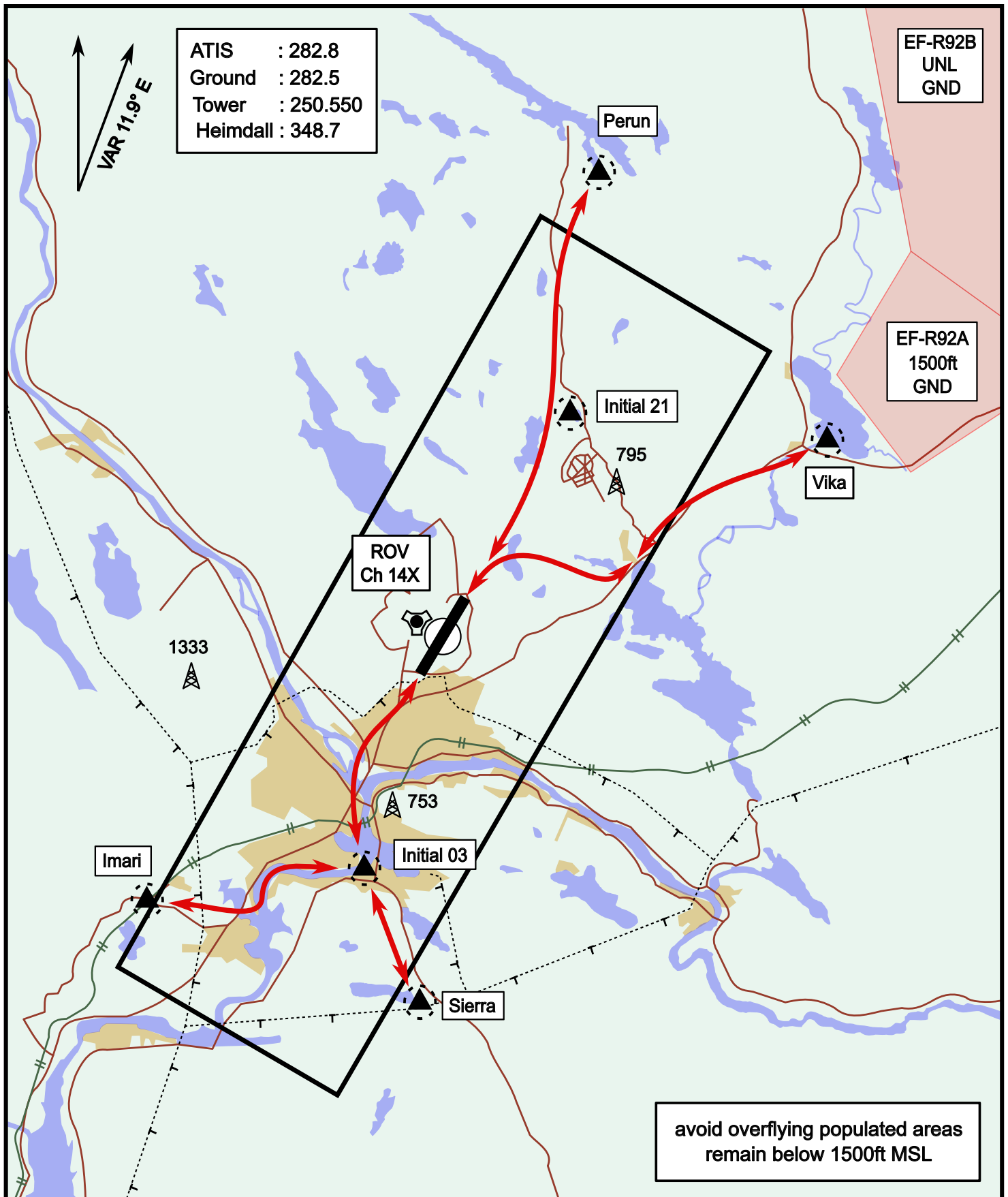
ATIS	Ground	Tower	Radar
282.800	282.500	250.550	348.700



# Helicopter Routing

elev 643 ft

# Rovaniemi, Finland

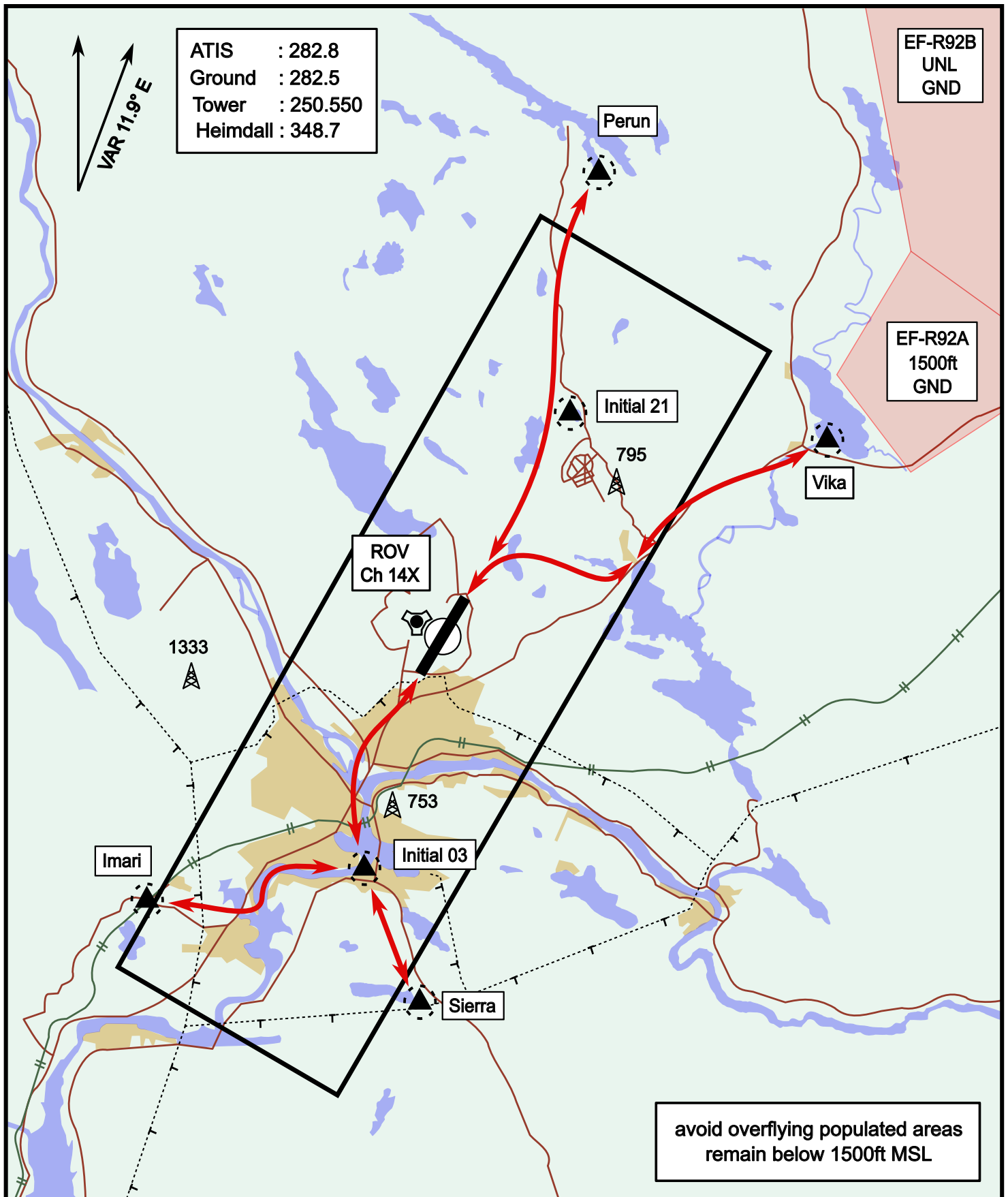


Vika	N66° 37.474 / E026° 13.557	Sierra	N66° 25.711 / E025° 46.610
Perun	N66° 44.135 / E026° 01.630	Imari	N66° 28.406 / E025° 31.291
Initial21	N66° 38.421 / E025° 58.682	Initial03	N66° 28.793 / E025° 44.105

# Helicopter Routing

elev 643 ft

# Rovaniemi, Finland



Vika	N66° 37.474 / E026° 13.557	Sierra	N66° 25.711 / E025° 46.610
Perun	N66° 44.135 / E026° 01.630	Imari	N66° 28.406 / E025° 31.291
Initial21	N66° 38.421 / E025° 58.682	Initial03	N66° 28.793 / E025° 44.105