

**MISSION DATA CARD**

OPORD		Callsign		Mission		Date/Time	
3498/2025		Monster 4		Training		062000JAN25	
Task	FAM Flight						Freq
AO	Nellis						132.15
Departure				Recovery			
DREAM LOW				ARCOE			
#	Callsign	Pilot		IFF	TCN	LSR	NET
-1	Monster 4-1	Lenzi		1441	1Y	1411	24/01
-2	Monster 4-2	Marsy		1442	64Y	1412	24/02
-3	Monster 4-3	addiks		1443	64X	1413	24/03
-4	Monster 4-4	Stoner		1444	1X	1414	24/04

**LOADOUT**

A/A	2xA9M				GUN	100% CM
A/G	7M282L				CHF	120
POD	A184, TGP				FLR	360
TKS					FUEL	50%

**TOLD**

	Takeoff	Target	Joker	Bingo	Land
FUEL	5543				

**AIRBASES**

	Name	TCN	ATIS	GND	TWR	RWY	Elev	ILS
Dep	Nellis AFB	12X	270.1	275.8	327.0	21L	1850	109.1
Arr	Nellis AFB	12X	270.1	275.8	327.0	21L	1850	109.1
Div	Creech AFB	87X	290.45	275.8	360.6			

**FLIGHTPLAN**

#	Name	Navaid/Coords/DME	ALT	TOT
1	Nellis	N36 14.680 W115 01.500		
2	JUNNO	BLD 346/44 (N36 43.800 W114 52.770)	3000	
3	DREAM	LAS 354/66 BLD 342/71 (N37 10.340 W114 59.530)	16000	
4	AR641A.1	N37 28 W114 39	17000	
5	ARCOE	LSV 357/30 (N36 44.260 W114 55.020)	15000	
6	APEX	LSV 027/09 (N36 21.580 W114 54.340)	4500	
7	PHINN	N36 18.427 W114 57.408	4000	
8	Nellis	N36 14.680 W115 01.500		

**COMMS**

Radio	Usage
1	132.15
2	11-3-4-16-17-11-4-3
3	32.00

## NOTES

Frohes Neues Kammeraden!

Heute leichte Kost, nach dem ganzen Gevölle, um wieder rein zu kommen.

Wir werden Dream Low raus gehen und Richtung Tanker fliegen. AR-641A TEXACO 1 265.0 (17) / 94Y 17000ft.

Dort die Kiste voll machen und zurück über ARCOE VFR Recovery zur 21L.

Dort normales Overhead Break und ein Touch-and-Go durchführen,

danach mit einem Left Hand Downwind zur Full Stop Landung gehen.

Wichtig:

Auf Traffic in Nellis achten. Es wird voll werden, eine Menge andere Maschinen werden dort ähnliches durchführen wollen.

## OTHER FLIGHTS

Callsign	Mission	Airframe	Freq	TCN	Grpld	Laser
T-Rex 4	Training	3x A-10C	132.25	1/64	25	141X
AO	Nellis	Task	FAM Flight			
Edelweiss 5	Training	3x F/A-18C	264.55	12/75	1	175X
AO	Range 64	Task	LCR-Check Testflight			
Raptor 1	Training	4x F-16C	134.0	1/64		162X
AO	EAST NTTR	Task	CAP			
Rattler 1	Training	2x AH-64D	133.5	1/64		125X
AO	LATNC	Task				
Nazgul 6	Training	4x F-15E	262.45	1/64		156X
AO		Task	Fam Flight			
Raptor 2	Training	4x F-16C	134.5	1/64		162X
AO	EAST NTTR	Task	CAP			

**RADIO CHANNELS**

#	Freq	Name
1		Flight/Squadron specific
2	289.4	Nellis Clearance Delivery
3	275.8	Nellis Ground
4	327.0	Nellis Tower
5	385.4	Nellis Approach/Departure West
6	273.55	Nellis Approach/Departure East
7	317.525	Nellis Control -- Sally
8	254.4	Nellis Control-- Lee
9	305.6	SOF Bullseye
10	343.725	EMERGENCY SINGLE FRQ
11	270.1	Nellis ATIS
12	360.625	Creech AFB Tower
13	250.1	HAVE QUICK 13
14	251.1	HAVE QUICK 14
15	252.1	HAVE QUICK 15
16	377.8	Blackjack
17	265.0	KC-135 AR-641A
18	360.8	KC-135MPRS AR-635
19	319.8	KC-135MPRS AR-625
20	300.05	KC-135 AR-231V

**RAMROD**

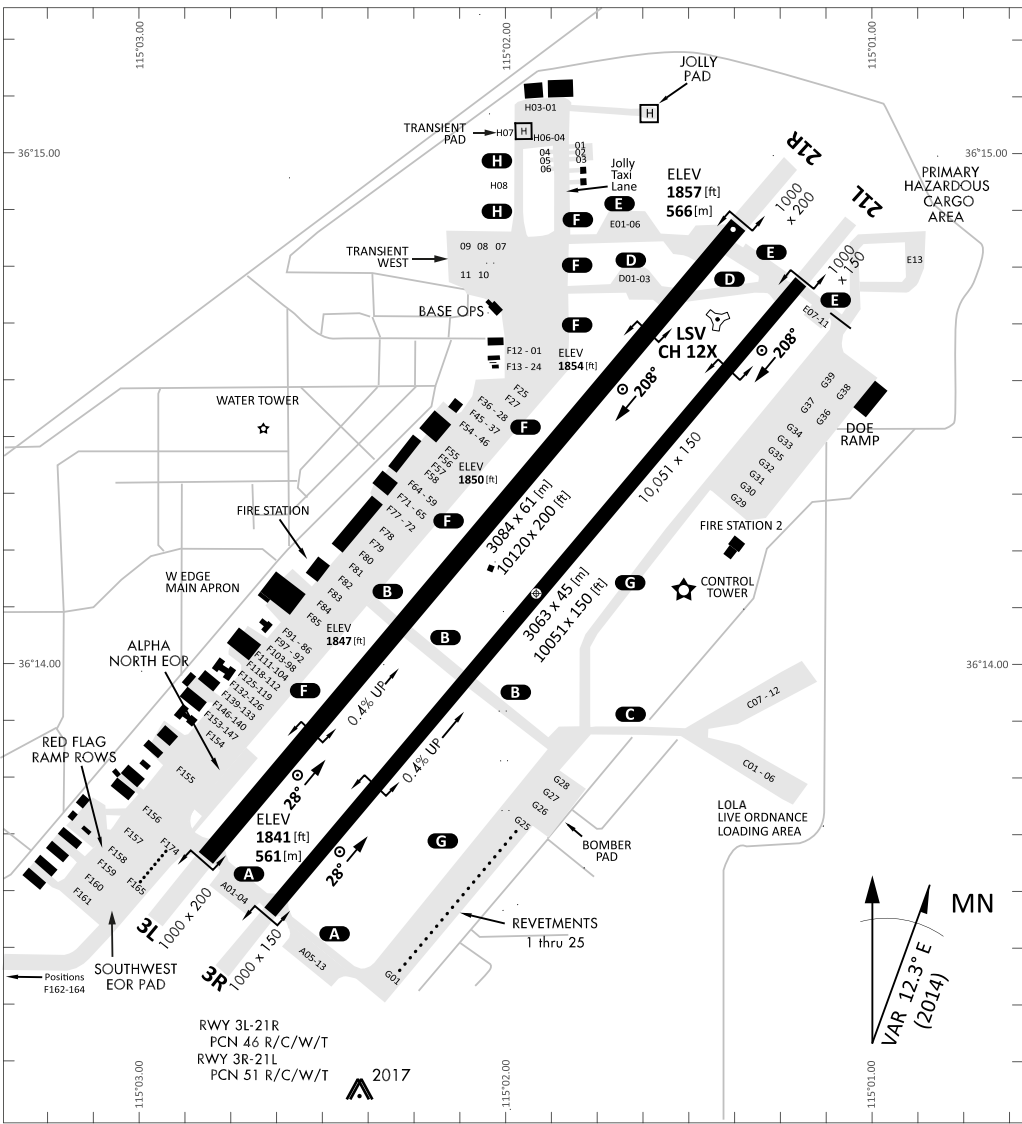
0	1	2	3	4	5	6	7	8	9
P	R	E	C	L	U	D	I	N	G

**KTC 1400 C**

	0	1	2	3	4	5	6	7	8	9
A	KSRL	WEG	HMX	IY	OA	DTN	FU	VP	JC	BQ
B	MBDY	SNC	KVT	WO	AU	RPQ	GH	LX	FJ	IE
C	VNJC	LXE	GTW	BA	YH	DOS	QF	KI	UM	PR
D	PCTX	IYS	HUL	FK	ER	JWV	ON	BA	GD	MQ
E	UKJL	GCF	QTW	IM	AH	XPO	DN	EB	YS	RV
F	ELMX	BWC	HND	JT	OF	SAU	YV	GR	KQ	IP
G	RUVA	BDO	TQF	PX	KG	MSC	LW	JH	YE	NI
H	MIGX	NVL	COF	PU	YT	WRQ	SE	DB	KA	JH
I	XMBF	SDE	JPY	TG	WQ	OUL	NV	AR	IH	CK
J	TWMC	QFG	JAO	VH	NL	IRY	KS	UE	PX	DB
K	REHY	JQN	XWO	CG	DL	TIS	UM	FP	BV	KA
L	QLTW	HMO	YSR	BV	DJ	XEF	GC	NI	PK	AU
M	SFMN	DWC	QKI	XB	YO	VEU	TL	JP	GH	RA
N	APLB	EFH	TDG	XV	WR	QIO	KN	SM	UJ	YC
O	MBLS	GXN	DFI	OJ	HP	WRK	UE	VT	QC	YA
P	SBAO	WRQ	DFJ	XV	LN	IYU	CM	PH	TG	EK
Q	CRTK	ALQ	DIP	SN	FO	BXG	MJ	WU	HV	YE
R	STGU	QJY	RAI	HN	CD	MXE	FO	PL	VB	WK
S	VHSI	QXW	KJD	BF	PL	OTM	CG	YU	AR	EN
T	IUMP	FTJ	KVS	LC	QY	HRB	DO	EW	AN	XG
U	EUIQ	CXK	SNF	GB	HM	YRL	AP	VW	DO	JT
V	GHYF	CWI	DLN	ES	PK	BXT	QO	AM	UR	JV
W	ADRQ	JYF	GHX	BN	TI	WKV	SM	CU	EP	LO
X	GAMP	CJW	UTY	RE	SO	VDN	IB	FH	KQ	XL
Y	KMRL	XPF	UWJ	IT	GQ	VND	OB	SA	EY	HC

**NAVAIDS**

<b>Id</b>	<b>Name</b>	<b>Channel</b>	<b>Position</b>	<b>Elevation</b>
BCE	Bryce Canyon	75	N3741.35 W11218.23	9040
BIH	Bishop	33	N3722.62 W11821.99	4114
BLD	Boulder	114	N3559.75 W11451.82	3650
BTY	Beatty	94	N3648.54 W11644.86	2925
CDC	Cedar City	120	N3747.24 W11304.90	5463
DAG	Daggett	79	N3457.75 W11634.69	1760
EED	Needles	99	N3445.96 W11428.43	650
GFS	Goffs	91	N3507.87 W11510.59	4019
GRL	Groom Lake	18	N3713.91 W11548.16	4475
HEC	Hector	74	N3447.83 W11627.78	1854
ILC	Wilson Creek	110	N3815.02 W11423.65	9318
INS	Creech AFB	87	N3635.20 W11540.12	3101
LAS	McCarran Intl	116	N3604.78 W11509.59	2142
LSV	Nellis	12	N3614.68 W11501.50	1864
MLF	Milford	58	N3821.62 W11300.79	4977
MMM	Mormon Mesa	90	N3646.16 W11416.65	2120
MVA	Mina	98	N3833.92 W11801.97	7860
OAL	Coale Dale	124	N3800.20 W11746.23	4800
PGS	Peach Springs	57	N3537.48 W11332.67	4754
TPH	Tonopah Muni	119	N3801.84 W11702.01	5330
TQQ	Silverbow	77	N3748.00 W11647.00	5500
UTI	St George	23	N3705.29 W11335.53	2871



RWY 3L-21R  
 PCN 46 R/C/W/T  
 RWY 3R-21L  
 PCN 51 R/C/W/T  
 2017

PAR	RWY	CAT	MINIMA		ARP	ELEV	Scale 1:35'500	
	21L	A B D E	2057 - 0.8 200 (200-0.8/1.6)	GS 3°	36° 14.060° N 115° 01.058° W	1857 [ft] 566 [m]	0 300 600 900 1200 1500 [m]	
	3R	A B D E	2057 - 0.8 200 (200-0.8/1.6)	GS 3°			0 1000 2000 3000 4000 5000 [ft]	
SRA	21R	A C D E	2257 - 1.2 350 (350-1.2/1.6)					
	3L	A C D E	2257 - 1.2 350 (350-1.2/1.6)					

RWY	TORA	TODA	ASDA	LDA	PSN	THR	ALS
21L	10051 [ft] 3063 [m]	11051 [ft] 3368 [m]	11051 [ft] 3368 [m]	10051 [ft] 3063 [m]	36°14.043' N	115°01.018' W	⊕
3R	10120 [ft] 3084 [m]	11120 [ft] 3398 [m]	11120 [ft] 3398 [m]	10120 [ft] 3084 [m]	36°13.029' N	115°02.038' W	

ATIS	NELLIS GROUND	NELLIS TOWER	NELLIS CONTROL	TACAN	ILS RWY 21L	NELLIS EAST	NELLIS WEST
270.100 MHz	275.800   121.800	327.000   132.55	317.525	LSV 12X	109.10 Mhz	384.400	385.000



# DREAM LOW VISUAL OPERATION CHART | VALID 2014

ATIS  
270.100  
NELLIS GROUND  
275.800  
NELLIS TOWER  
327.000  
NELLIS CONTROL  
317.525  
NELLIS DEP/APP EAST  
384.400  
BLACKJACK  
377.800

**DREAM**  
N3710.34  
W11459.53

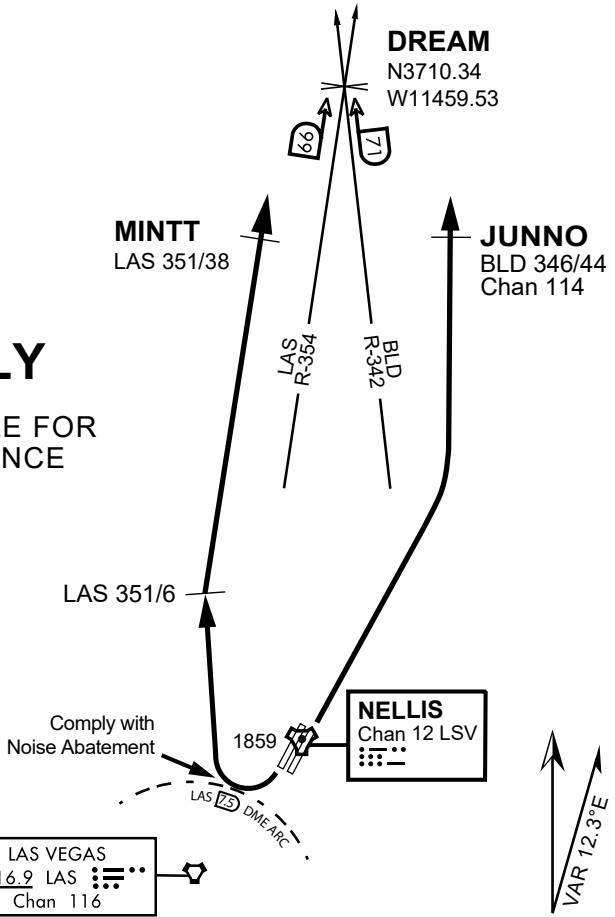
**MINTT**  
LAS 351/38

**JUNNO**  
BLD 346/44  
Chan 114

## VMC ONLY

### PILOT RESPONSIBLE FOR TERRAIN AVOIDANCE

CAUTION: If unable to comply with restrictions advise ATC prior to departure.



## DEPARTURE ROUTE DESCRIPTION

### TAKE-OFF RWY 3 L/R

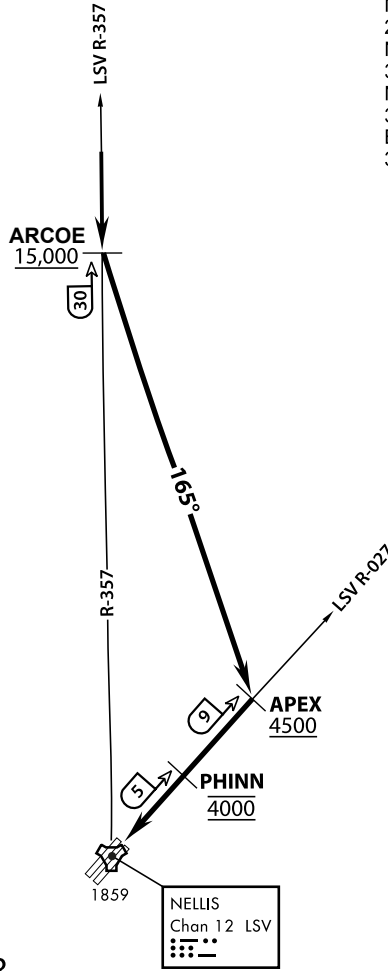
- Remain below 3000' MSI until departure end of runway.
- Request VFR cruising altitude on departure, maintain VFR during climb.
- Fly DREAM FOUR ground track to DREAM, proceed VFR to scheduled airspace.

### TAKE-OFF RWY 21 L/R

- Follow Noise Abatement procedures
- Request VFR cruising altitude on departure, maintain VFR during climb.
- Fly DREAM FOUR ground track to DREAM, proceed VFR to scheduled airspace.

## DREAM LOW DEPARTURE (AFBI)

ATIS  
 270.100  
 NELLIS GROUND  
 275.800  
 NELLIS TOWER  
 327.000  
 NELLIS CONTROL  
 317.525  
 BLACKJACK  
 377.800



# VMC ONLY

PILOT RESPONSIBLE FOR  
TERRAIN AVOIDANCE

## APPROACH ROUTE DESCRIPTION

### OVERHEAD

Cross ARCOE at or above 15,000 MSL, then heading 165° to APEX.  
 Cross APEX at or above 4,500 MSL, report to tower.  
 Cross PHINN (LSV 027/5) at 4,000 MSL then descend to 3,500 MSL for Initial.

### VFR STRAIGHT IN RWY 21

Cross APEX at 4,000 feet MSL. Descend to be at 3,000 feet MSL at PHINN (LSV 027/5).



INDIAN SPRINGS, NEVADA

TACAN INS Chan 87	APCH CRS 065°	Rwy ldg TDZE 3133	9002 3113
		Arpt Elev 3113	

INDIAN SPRINGS AF AUX (KINS)

▼ \* MISSED APPROACH: Straight ahead to INS TACAN, intercept INS R-outbound, cross 17 DME at or above 9500, then direkt KSV TACAN 114

NELLIS CON

CREECH AFB TOWER  
118.30 60.60

GND CON

NOT FOR CIVIL USE

FOR USE UNDER BASIC VFR  
WEATHER MINIMUMS ONLY

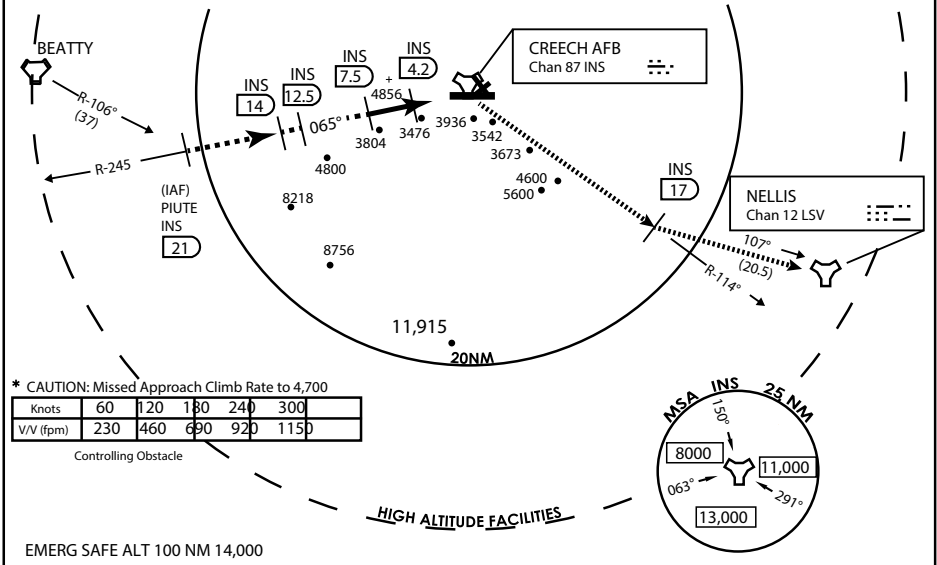
PILOT IS RESPONSIBLE FOR TERRAIN/OBSTACLE AVOIDANCE AND APPROPRIATE VFR CLOUD CLEARANCE FOR ALL

CAUTION: Descent gradients are greater than allowed under standard TERPS criteria and inbound course does not meet straight-in criteria

CAUTION: Final approach course crosses Runway centerline at MIDFIELD. Maneuvering left of course required prior to landing. Do not Maneuver farther north than the INS R- 258

Modified by viaBog 66 for use with DCS  
NOT FOR REAL LIFE NAVIGATION

Modified by viaBog 66 for use with DCS  
NOT FOR REAL LIFE NAVIGATION

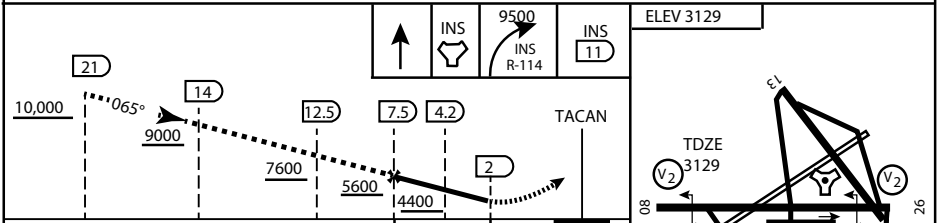


\* CAUTION: Missed Approach Climb Rate to 4,700

Knots	60	120	180	240	300
V/V (fpm)	230	460	690	920	1150

Controlling Obstacle

HIGH ALTITUDE FACILITIES



CATEGORY	A	B	C	D	E
S-8	3760-1 1/2	627 (700-1 1/2)	3760-1 3/4 627 (700-1 3/4)	3760-2 627 (700-2)	3760-2 1/4 627 (700-2 1/4)
CIRCLING	NOT AUTHORIZED				

CITY OF INDIAN, NEVADA

INDIAN SPRINGS AF AUX (KINS)

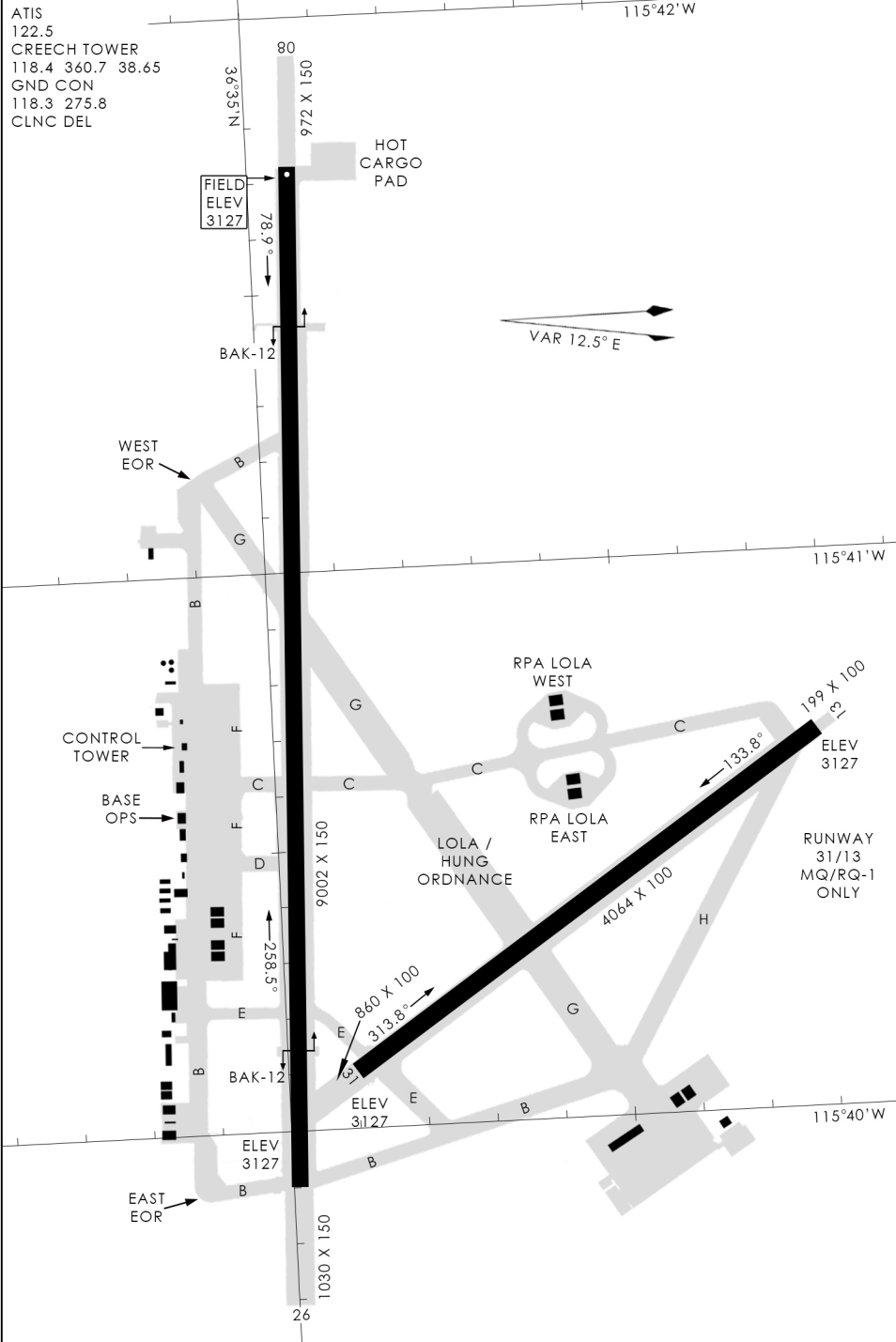
(FOR DAY VFR USE ONLY)



# AIRPORT DIAGRAM

476 VFG

CREECH AFB (KINS)  
INDIAN SPRINGS, NEVADA



476 VFG JAN 2019

476 VFG JAN 2019

# AIRPORT DIAGRAM

INDIAN SPRINGS, NEVADA  
CREECH AFB (KINS)