

MISSION DATA CARD

OPORD		Callsign		Mission		Date/Time		
3496/2025		Raptor 1		Training		030000JAN25		
Task	AAR; Pattern work						Freq	
AO	ESR04						134.0	
Departure				Recovery				
VFR Helicopter				VFR Helicopter				
#	Callsign		Pilot		IFF	TCN	LSR	NET
-1	Raptor 1-1		Hercules		1721	1Y	1721	
-2	Raptor 1-2		Jinx		1722	64Y	1722	

LOADOUT

A/A	2xA120C, 2xA9X					GUN	100% HEI-T
A/G	2xM82					CHF	60
POD	HTS, TGP					FLR	60
TKS	2xFT300					FUEL	100%

TOLD

	Takeoff	Target	Joker	Bingo	Land
FUEL	11169				

AIRBASES

	Name	TCN	ATIS	GND	TWR	RWY	Elev	ILS
Dep	Rovaniemi	14X	282.8	282.5	250.55	21	643	111.7
Arr	Rovaniemi	14X	282.8	282.5	250.55	21	643	111.7
Div	Rovaniemi	14X	282.8	282.5	250.55	21	643	111.7

FLIGHTPLAN

#	Name	Navaid/Coords/DME	ALT	TOT
1	Initial21	N66 38.642 E025 58.682	2500	
2	PERUN	N66 44.135 E026 01.630	4000	
3	NAFFI	N67 04.630 E023 11.660	25000	
4	SEPJA	N67 27.300 E021 12.080	25000	
5	TGT	N66 04.309 E023 15.043	236	
6	IMARI	N66 28.406 E025 31.291	3000	
7	Initial03	N66 28.793 E025 44.105	2500	
8	ESR04_Armored Attack	N65 51.471 E021 28.020	91	
9	T-ESR01 SA6	N68 22.154 E020 19.399	0	
10	Bomb Circle	N67 22.646 E026 22.790	740	

SUPPORT**Tanker**

Callsign	TCN	Freq	ALT	TAS
ARCO 1	22Y	319.8		
	Pos			

AWACS

Callsign	Freq	ALT	Pos
HEIMDALL	348.7		

RADIO CHANNELS

#	Freq	Name
1		Flight/Squadron specific
2	282.8	Rovaniemi ATIS
3	282.5	Rovaniemi Ground
4	250.55	Rovaniemi Tower
5	320.7	Bodo ATIS
6	250.75	Bodo Tower
7	235.45	Kallax ATIS
8	250.3	Kallax Tower
9	265.0	Texaco-1 KC-135 Medium / Slow 71Y
10	319.8	Arco-1 KC-135 High / Fast 22Y
11	360.8	Shell-1 KC-135 MPRS High / Fast 41Y
12	304.0	CVN-71 Rough Rider (RRR) 71X
13	303.0	LHA-1 Tarawa (TWA) 79X
14	247.8	S-3B Mauler-1 (MAU) 64Y
15	347.8	Loki (E-2D)
16	348.7	Heimdall (E-3A)
17	242.17	ESR02 - CAS Range Operator
18	34.7	ESR02 - JTAC Odin
19	270.5	Blue
20	270.75	Red

RAMROD

0	1	2	3	4	5	6	7	8	9
S	H	O	P	L	I	F	T	E	D

KTC 1400 C

	0	1	2	3	4	5	6	7	8	9
A	XJVT	FYL	KIE	WB	AS	HPO	DU	QR	GC	NM
B	SDXC	UVN	WYR	QT	IG	BMO	EF	KL	PA	HJ
C	PXJM	OLB	QTF	WY	NS	RGU	HD	KV	AC	EI
D	VT OG	RLE	AJF	PM	YU	IXC	NK	HQ	BD	SW
E	FHJT	REA	DCP	YI	GB	WNU	QO	SK	MV	LX
F	IFBD	NEO	LAK	SV	CQ	MHW	JU	YX	GP	TR
G	MNSG	BIF	HXD	YV	WT	OEP	LA	QK	UR	JC
H	YCQJ	VHF	RTS	DL	GE	IWK	PB	UN	MX	OA
I	BISJ	DRU	PHF	GL	TM	AXV	NE	OK	WY	CQ
J	CSKF	NHV	ORP	IB	DA	QYW	JU	XT	LM	GE
K	CLXF	NGJ	RAP	OI	HB	DUM	KT	YV	SQ	EW
L	BALT	IEJ	CPX	KM	GH	DNR	WQ	YS	UO	FV
M	AIML	VGC	KXR	BN	TU	SQD	FY	JP	EO	WH
N	JTBY	DEQ	UPV	MA	LC	RFK	HS	OW	GI	NX
O	DNTB	RSX	OKI	ME	LJ	QAP	UC	HF	YW	VG
P	RFVY	MON	HDX	EC	WI	LTG	PU	KA	BS	QJ
Q	LIPX	TEH	BJA	WQ	SK	NUV	FD	MR	CG	OY
R	FQLA	OJS	XYR	TP	EV	WDH	KC	BN	IM	UG
S	UHSX	VFO	RAE	NK	LT	PBW	GC	DY	IJ	MQ
T	NAIO	FSG	URE	CB	TK	HVX	WD	QP	JM	YL
U	SVEC	UAI	HTO	LR	DG	PYQ	FN	MX	KB	WJ
V	ANUF	HCD	PIO	WY	KV	JEX	RL	GQ	SB	MT
W	GQDH	NSU	EIF	BY	JK	TVX	WR	OM	CL	AP
X	JLSW	EHB	OCT	PF	NK	MYV	IX	AQ	GU	DR
Y	BX HJ	UPW	GLM	NO	DI	SVF	CY	KQ	AE	RT

NAVAIDS

Id	Name	Channel	Position	Elevation
BOO	Bodo	45	N67 15.838 E014 20.046	43
BNK	Banak	47	N70 03.937 E024 58.181	17
OYA	Andoya	28	N69 17.175 E016 08.658	19

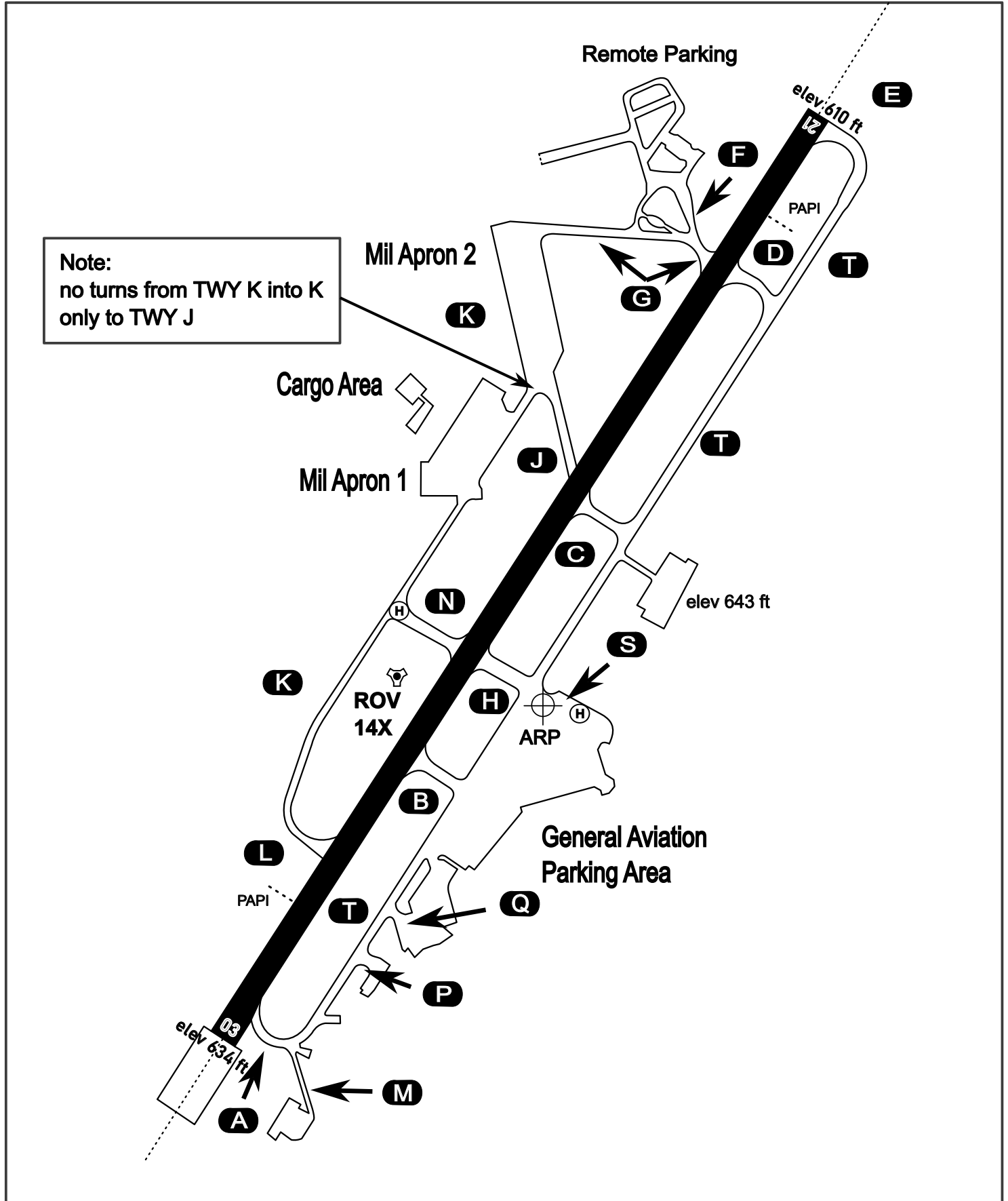
AERODROME CHART

Rovaniemi Aerodrome

ARP N66° 33' 42" E025° 49' 51"

elev 643 ft

ROVANIEMI, FINLAND

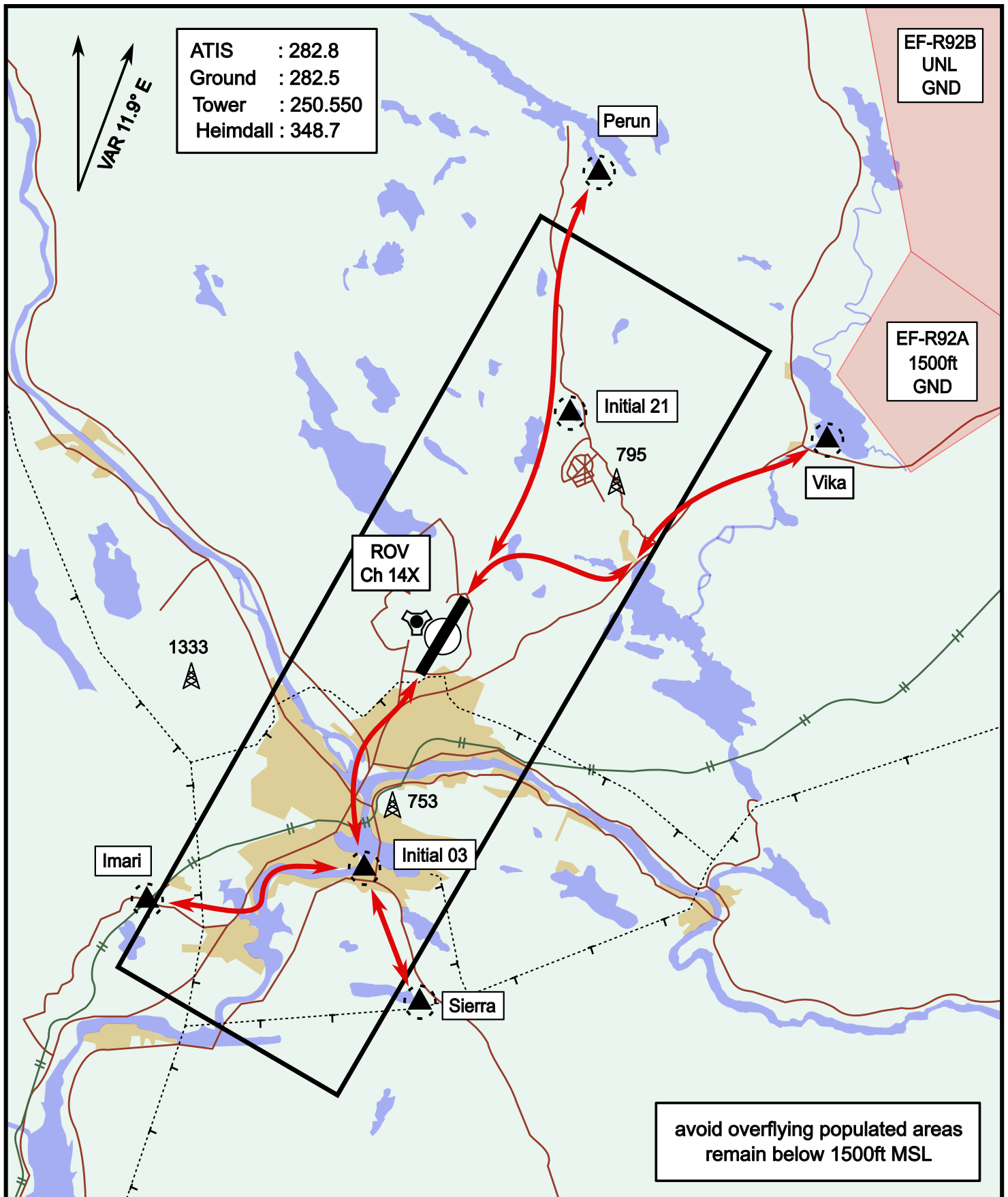


ATIS	Ground	Tower	Radar
282.800	282.500	250.550	348.700

Helicopter Routing

elev 643 ft

Rovaniemi, Finland

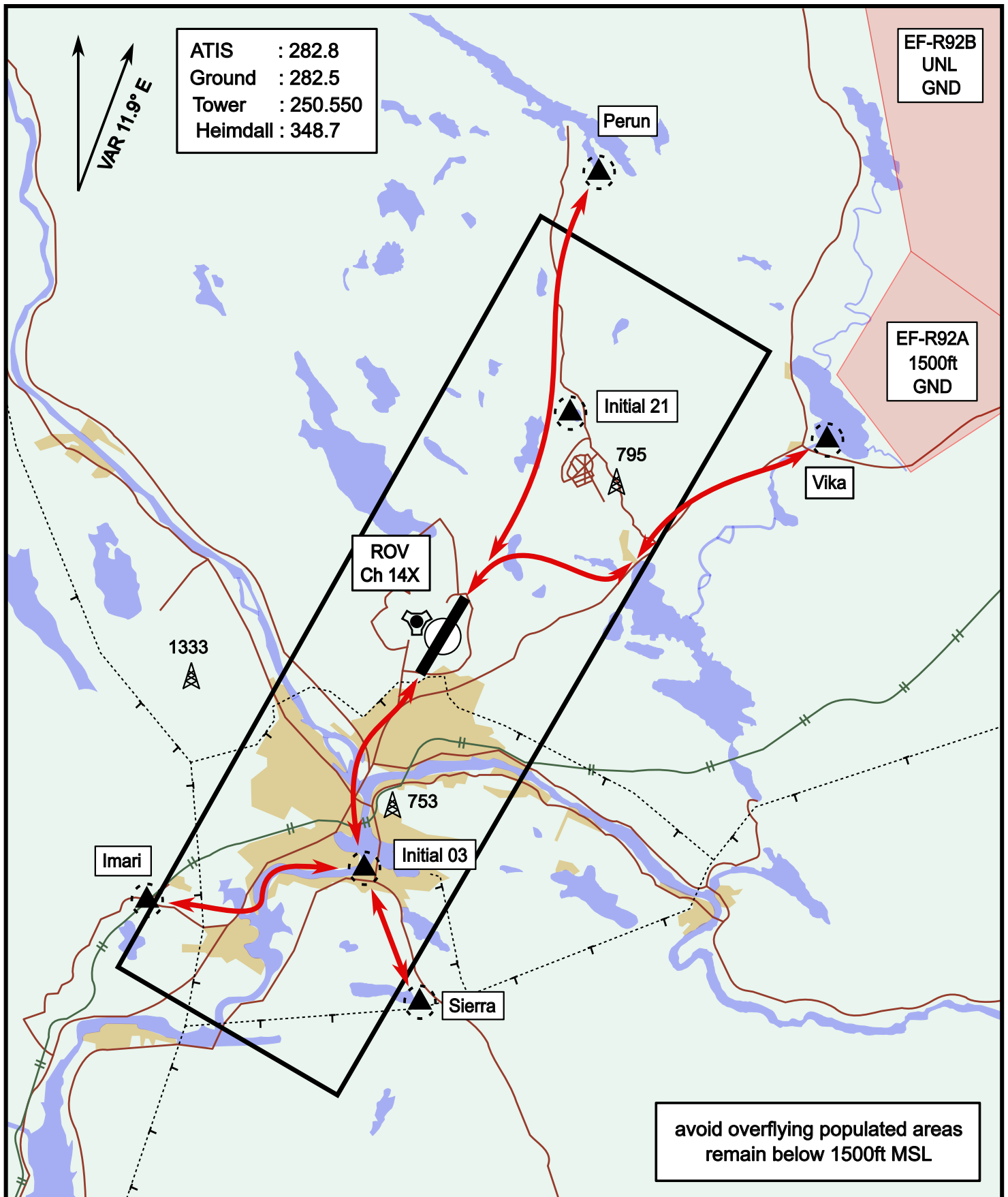


Vika	N66° 37.474 / E026° 13.557	Sierra	N66° 25.711 / E025° 46.610
Perun	N66° 44.135 / E026° 01.630	Imari	N66° 28.406 / E025° 31.291
Initial21	N66° 38.421 / E025° 58.682	Initial03	N66° 28.793 / E025° 44.105

Helicopter Routing

elev 643 ft

Rovaniemi, Finland

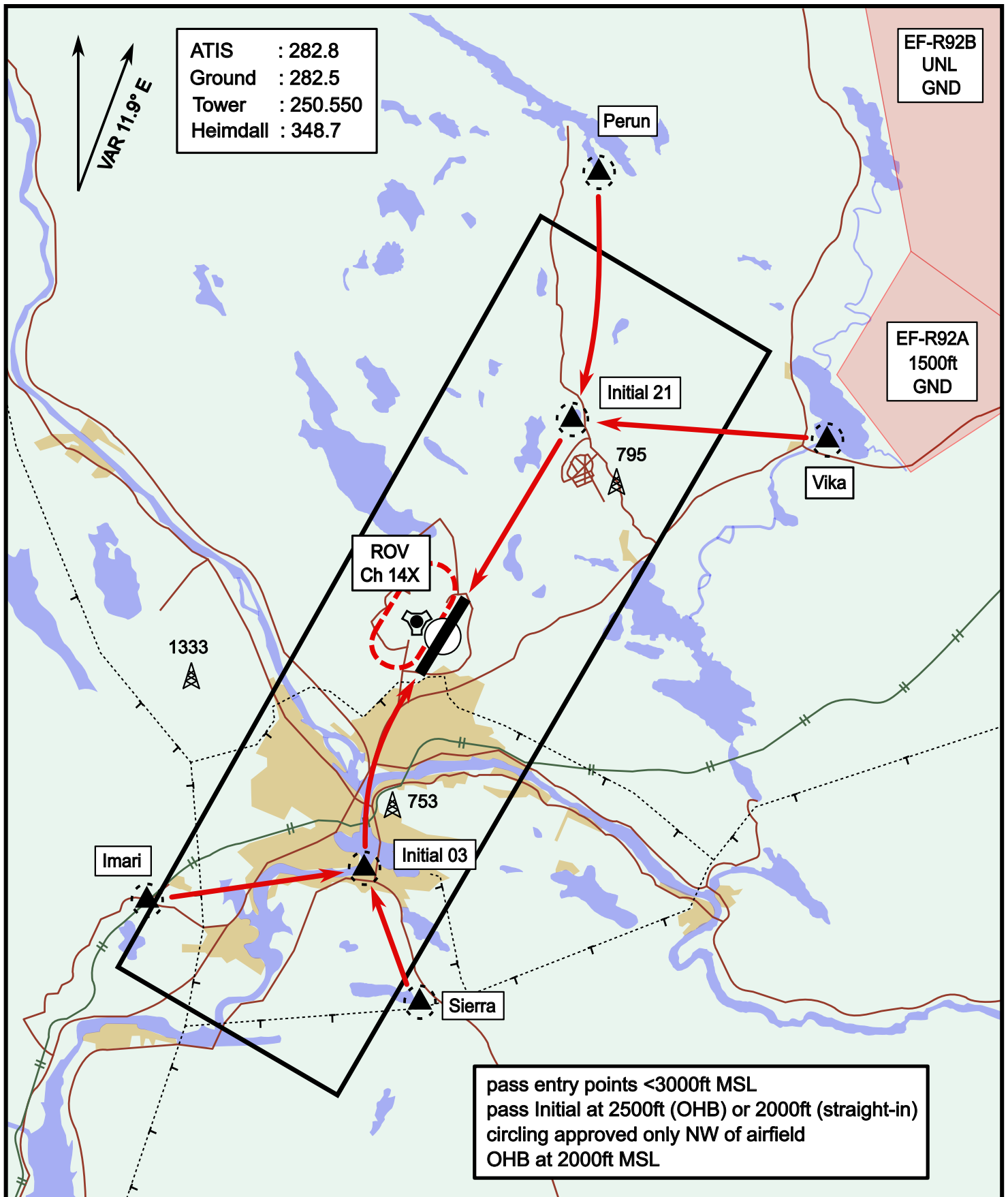


Vika	N66° 37.474 / E026° 13.557	Sierra	N66° 25.711 / E025° 46.610
Perun	N66° 44.135 / E026° 01.630	Imari	N66° 28.406 / E025° 31.291
Initial21	N66° 38.421 / E025° 58.682	Initial03	N66° 28.793 / E025° 44.105

Visual Approach Jet

elev 643 ft

Rovaniemi, Finland



Vika	N66° 37.474 / E026° 13.557	Sierra	N66° 25.711 / E025° 46.610
Perun	N66° 44.135 / E026° 01.630	Imari	N66° 28.406 / E025° 31.291
Initial21	N66° 38.421 / E025° 58.682	Initial03	N66° 28.793 / E025° 44.105

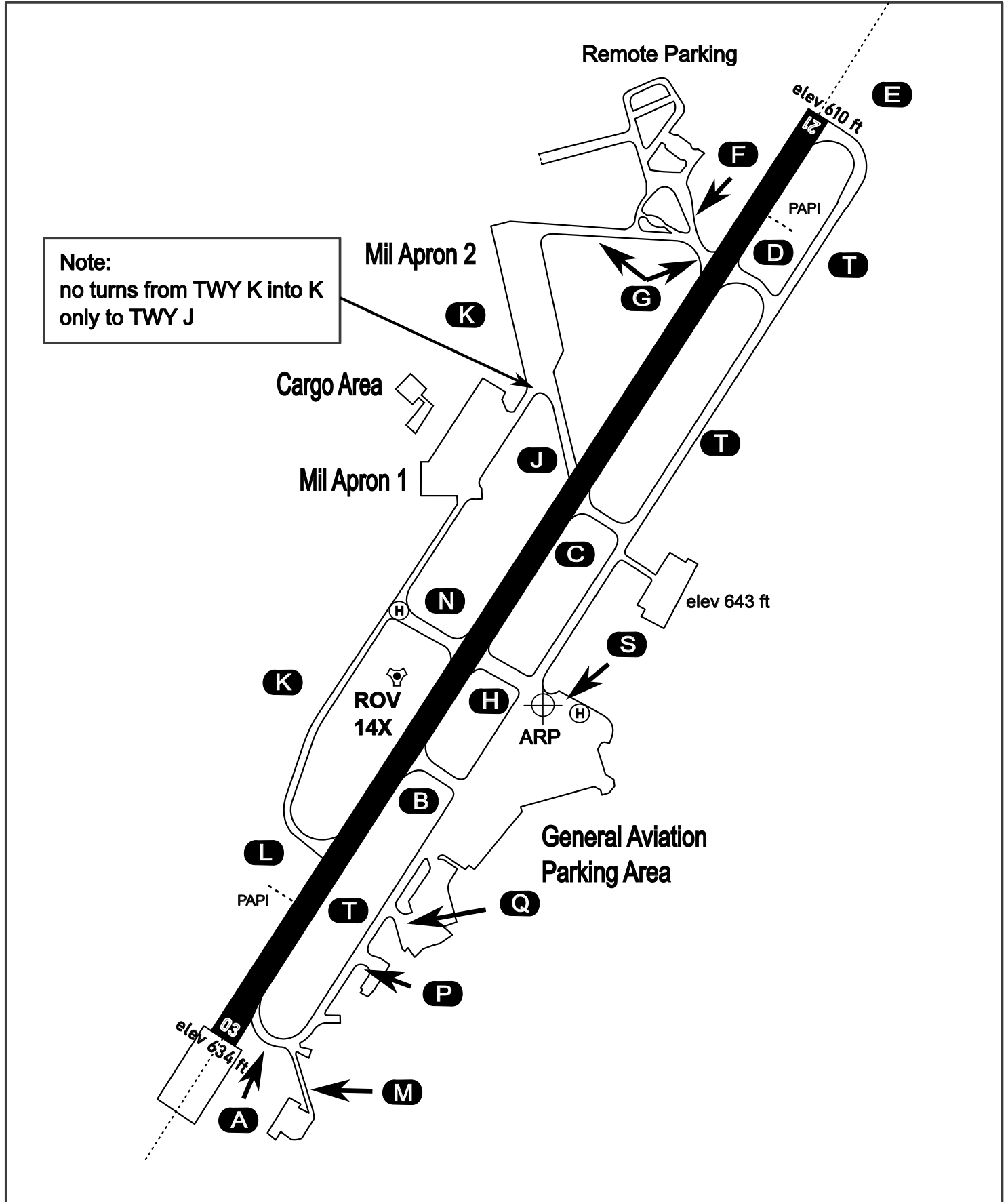
AERODROME CHART

Rovaniemi Aerodrome

ARP N66° 33' 42" E025° 49' 51"

elev 643 ft

ROVANIEMI, FINLAND



ATIS	Ground	Tower	Radar
282.800	282.500	250.550	348.700