

MISSION DATA CARD

OPORD		Callsign		Mission		Date/Time		
3493/2024		Edelweiss 1		Training		311509DEC24		
Task	JASOW LGBU					Freq		
AO	ESR03					264.15		
Departure				Recovery				
VFR Departure				VFR Approach				
#	Callsign		Pilot		IFF	TCN	LSR	NET
-1	Edelweiss 1-1		Kosmoss		1711	1Y	1711	
-2	Edelweiss 1-2		Remotex		1712	64Y	1712	

LOADOUT

A/A	2xA9X, A120C				GUN	100% HEI-T	
A/G	4xG12, 4xA154C				CHF	120	
POD	TGP				FLR	0	
TKS	FPU-8A				FUEL	100%	

TOLD

	Takeoff	Target	Joker	Bingo	Land
FUEL	13047			4000	

AIRBASES

	Name	TCN	ATIS	GND	TWR	RWY	Elev	ILS
Dep	Rovaniemi	14X	282.8	282.5	250.55	21	643	111.7
Arr	Rovaniemi	14X	282.8	282.5	250.55	21	643	111.7
Div	Kemi Tornio	106X			250.3	36	62	110.9

FLIGHTPLAN

#	Name	Navaid/Coords/DME	ALT	TOT
1	Initial21	N66 38.642 E025 58.682	2500	
2	IMARI	N66 28.406 E025 31.291	3000	
3	ESR03 Outpost	N66 04.309 E023 15.043	22000	
4	PERUN	N66 44.135 E026 01.630	3000	
5	Initial03	N66 28.793 E025 44.105	2500	

COMMS

Radio	Usage
1	282.500 / 304.00 / 348.700 /282.800 / 250.550
2	264.150
3	Mids A 22
4	Mids B 44

SUPPORT**Tanker**

Callsign	TCN	Freq	ALT	TAS
SHELL 1	41Y	360.8		
Pos				

RADIO CHANNELS

#	Freq	Name
1		Flight/Squadron specific
2	282.8	Rovaniemi ATIS
3	282.5	Rovaniemi Ground
4	250.55	Rovaniemi Tower
5	320.7	Bodo ATIS
6	250.75	Bodo Tower
7	235.45	Kallax ATIS
8	250.3	Kallax Tower
9	265.0	Texaco-1 KC-135 Medium / Slow 71Y
10	319.8	Arco-1 KC-135 High / Fast 22Y
11	360.8	Shell-1 KC-135 MPRS High / Fast 41Y
12	304.0	CVN-71 Rough Rider (RRR) 71X
13	303.0	LHA-1 Tarawa (TWA) 79X
14	247.8	S-3B Mauler-1 (MAU) 64Y
15	347.8	Loki (E-2D)
16	348.7	Heimdall (E-3A)
17	242.17	ESR02 - CAS Range Operator
18	34.7	ESR02 - JTAC Odin
19	270.5	Blue
20	270.75	Red

RAMROD

0	1	2	3	4	5	6	7	8	9
P	A	R	C	H	M	E	N	T	S

KTC 1400 C

	0	1	2	3	4	5	6	7	8	9
A	WAEO	SYD	QNH	PB	KG	MVJ	LR	UI	XC	TF
B	RNMO	KEC	WDJ	SU	HA	IXG	LB	QP	YT	VF
C	GQES	OWT	DKH	YA	FC	IUN	XL	PB	JR	VM
D	KTIN	LMV	OFE	QW	BP	CJG	AU	RH	SX	YD
E	QYMU	OTN	VSI	LP	WX	KEG	DA	BH	FJ	RC
F	FXDY	HUC	WOB	SR	KV	JAT	NE	GM	IL	QP
G	CWEM	XOK	PSL	HG	FJ	TIB	AR	YN	UV	DQ
H	KSPE	LVF	XOJ	DI	RB	UHN	WG	YM	CA	QT
I	DNTX	IAG	QSM	WU	FR	KEY	LV	PJ	CB	OH
J	OPCV	HMR	GSY	NK	WT	AJU	IX	BL	DE	QF
K	DKCM	EIT	WPX	FL	GR	QJU	VY	AB	HS	ON
L	YQJU	FSL	WRC	KX	IO	AGH	TE	PM	DN	BV
M	NXCJ	OPT	FRH	AK	MU	QWG	YL	BI	SE	VD
N	PAMS	JGX	LQU	EH	TR	WYN	OB	VD	IK	CF
O	VENR	UIX	TPO	HA	WQ	CJS	GM	LB	YF	DK
P	SNBY	UWI	OMT	HF	DE	LPC	GX	VQ	JA	RK
Q	REJC	OWG	VIA	PL	HB	NDK	FU	SX	MQ	YT
R	SGNL	MFK	AQJ	UO	HE	BRI	XD	WY	PV	CT
S	HGRV	APE	DYN	FI	CB	XMT	OQ	KU	SJ	WL
T	HGRY	VNQ	OFS	DI	PB	WCT	JA	UM	EX	LK
U	XJAU	BWP	VRG	YK	FN	EIT	LQ	HM	OC	DS
V	FIXN	TYM	OVA	EJ	DL	WKR	GC	UQ	SB	PH
W	QSWI	FGV	HDP	RN	ML	XEC	UA	OB	YJ	TK
X	WTLA	DGI	MKU	BH	PC	EQS	OY	VF	JX	NR
Y	IPRW	KAX	FDY	JS	NV	LQB	HO	MT	UG	EC

NAVAIDS

Id	Name	Channel	Position	Elevation
BOO	Bodo	45	N67 15.838 E014 20.046	43
BNK	Banak	47	N70 03.937 E024 58.181	17
OYA	Andoya	28	N69 17.175 E016 08.658	19

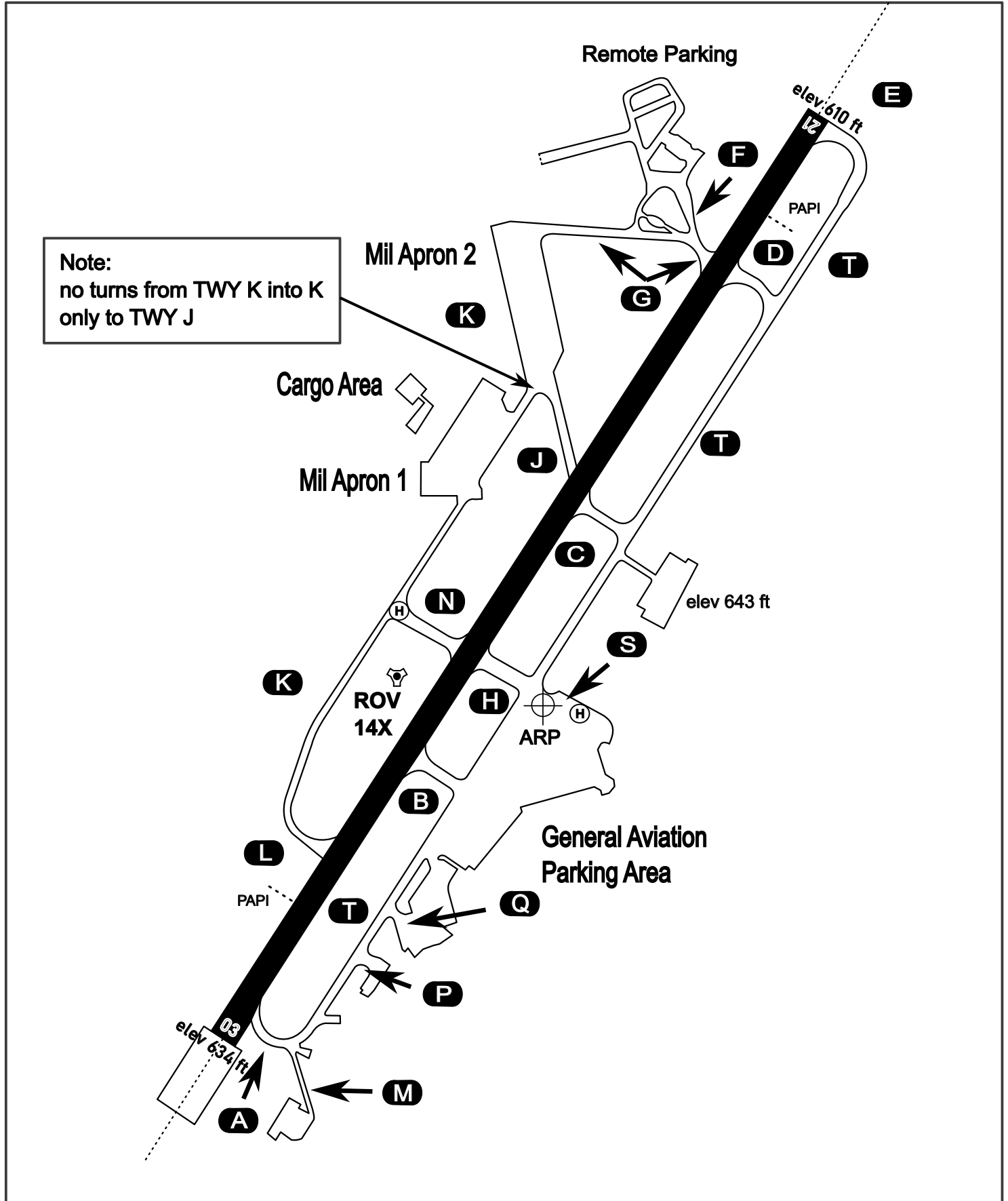
AERODROME CHART

Rovaniemi Aerodrome

ARP N66° 33' 42" E025° 49' 51"

elev 643 ft

ROVANIEMI, FINLAND

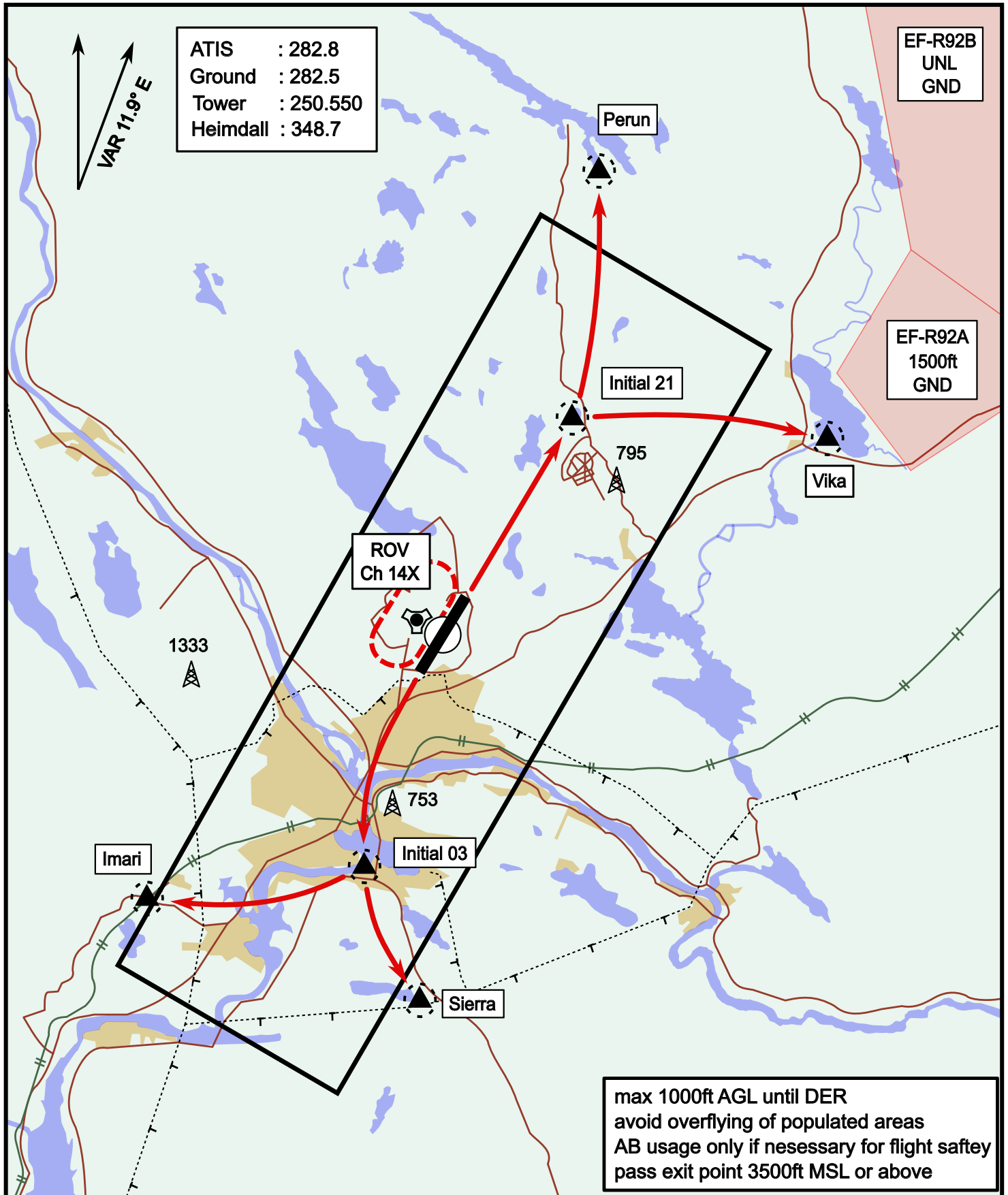


ATIS	Ground	Tower	Radar
282.800	282.500	250.550	348.700

Visual Departure Jet

elev 643 ft

Rovaniemi, Finland

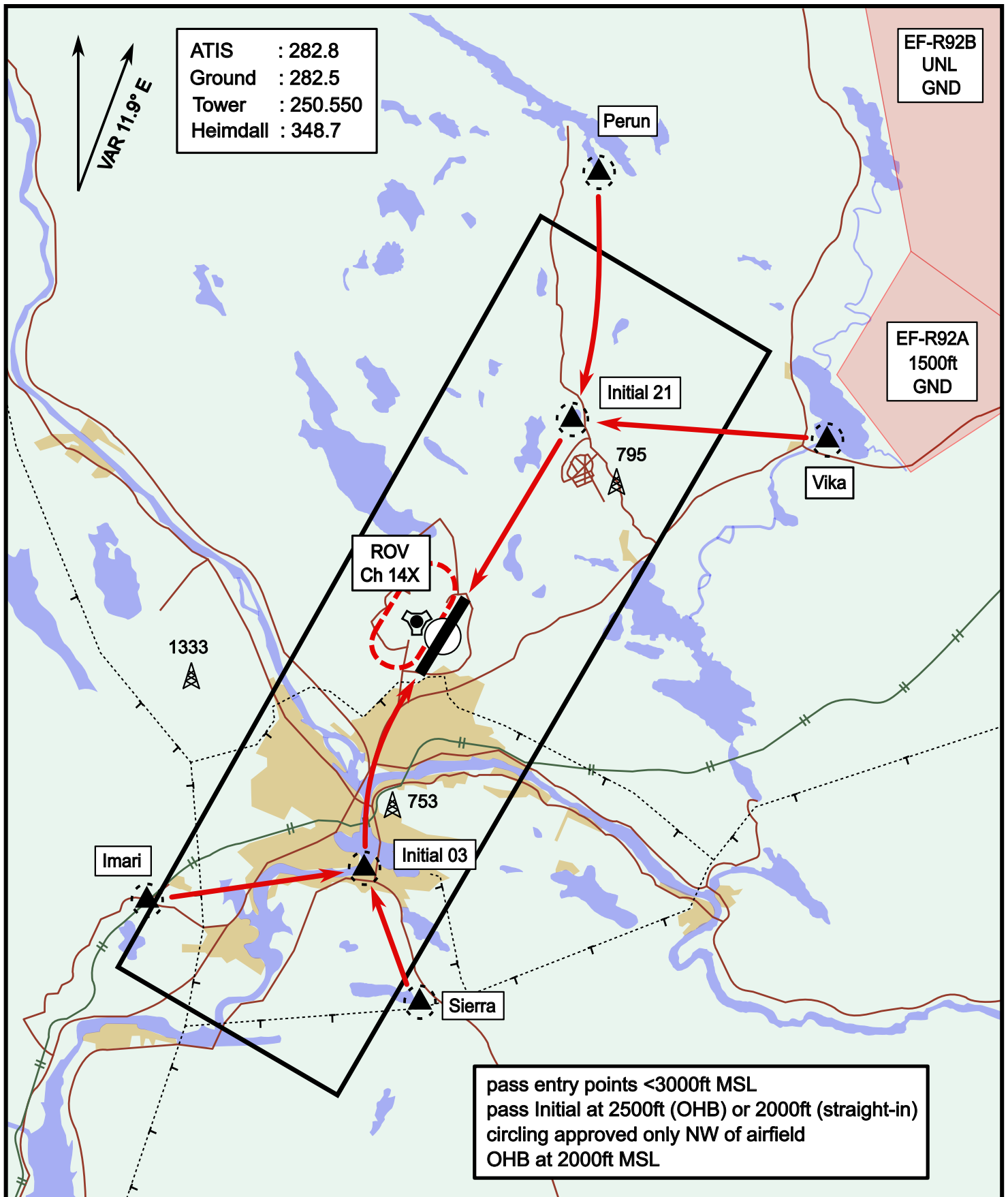


Vika	N66° 37.474 / E026° 13.557	Sierra	N66° 25.711 / E025° 46.610
Perun	N66° 44.135 / E026° 01.630	Imari	N66° 28.406 / E025° 31.291
Initial21	N66° 38.421 / E025° 58.682	Initial03	N66° 28.793 / E025° 44.105

Visual Approach Jet

elev 643 ft

Rovaniemi, Finland



Vika	N66° 37.474 / E026° 13.557	Sierra	N66° 25.711 / E025° 46.610
Perun	N66° 44.135 / E026° 01.630	Imari	N66° 28.406 / E025° 31.291
Initial21	N66° 38.421 / E025° 58.682	Initial03	N66° 28.793 / E025° 44.105

NOT AVAILABLE

NOT AVAILABLE