

**MISSION DATA CARD**

OPORD		Callsign		Mission		Date/Time		
3491/2024		Tiger 3		Training		302038DEC24		
Task	Anti Ship					Freq		
AO	ENR06					261.15		
Departure				Recovery				
VFR Depature				none				
#	Callsign		Pilot		IFF	TCN	LSR	NET
-1	Tiger 3-1		Kosmoss		1031	1Y	1551	

**LOADOUT**

A/A	2xA9X, A120C				GUN	100% HEI-T	
A/G	4xA65F				CHF	120	
POD	TGP				FLR	0	
TKS	FPU-8A				FUEL	100%	

**TOLD**

	Takeoff	Target	Joker	Bingo	Land
FUEL	13047			3000	

**AIRBASES**

	Name	TCN	ATIS	GND	TWR	RWY	Elev	ILS
Dep	Rovaniemi	14X	282.8	282.5	250.55	21	643	111.7
Arr	Bodo	45X	320.7		250.75	25	19	110.3
Div	CVN-71 USS Theodore Roosevelt	71X		ICLS 7	304.0			

**FLIGHTPLAN**

#	Name	Navaid/Coords/DME	ALT	TOT
1	Initial03	N66 28.793 E025 44.105	2500	
2	IMARI	N66 28.406 E025 31.291	3000	
3	ENR06	N66 23.323 E012 36.440	100	

**SUPPORT****Tanker**

Callsign	TCN	Freq	ALT	TAS
SHELL 1	41Y	360.8		
	Pos			

**AWACS**

Callsign	Freq	ALT	Pos
HEIMDALL	348.7		

**OTHER FLIGHTS**

Callsign	Mission	Airframe	Freq	TCN	Grpld	Laser
Raptor 1	Training	4x F-16C	134.0	1/64		172X
AO	ESR04	Task	LGB Training			
Raptor 1	Training	4x F-16C	134.0	1/64		155X
AO	ENR06	Task	Anti Ship			

## RADIO CHANNELS

#	Freq	Name
1		Flight/Squadron specific
2	282.8	Rovaniemi ATIS
3	282.5	Rovaniemi Ground
4	250.55	Rovaniemi Tower
5	320.7	Bodo ATIS
6	250.75	Bodo Tower
7	235.45	Kallax ATIS
8	250.3	Kallax Tower
9	265.0	Texaco-1   KC-135   Medium / Slow   71Y
10	319.8	Arco-1   KC-135   High / Fast   22Y
11	360.8	Shell-1   KC-135 MPRS   High / Fast   41Y
12	304.0	CVN-71 Rough Rider (RRR)   71X
13	303.0	LHA-1 Tarawa (TWA)   79X
14	247.8	S-3B Mauler-1 (MAU)  64Y
15	347.8	Loki (E-2D)
16	348.7	Heimdall (E-3A)
17	242.17	ESR02 - CAS Range Operator
18	34.7	ESR02 - JTAC Odin
19	270.5	Blue
20	270.75	Red

**RAMROD**

0	1	2	3	4	5	6	7	8	9
O	U	T	L	A	N	D	I	S	H

**KTC 1400 C**

	0	1	2	3	4	5	6	7	8	9
A	YSOL	PHE	JUI	CW	AT	DKQ	NM	BV	GF	XR
B	THJO	BLM	KYG	IP	XR	VEQ	NA	WC	FS	UD
C	HEKA	LSP	QIR	FN	DY	UJW	MO	BX	CV	GT
D	SYMO	PVE	CXL	UW	JI	TQH	ND	RA	KG	FB
E	XPGL	RSW	MCO	AB	JT	QFE	UH	KV	DN	YI
F	YPXS	JBT	UDQ	MC	FI	KWO	RA	NH	VE	GL
G	SGYO	WUX	QIV	AJ	ML	EFC	HR	TD	PK	BN
H	QVKA	UBP	DJO	MF	XN	CRG	SL	TI	EH	YW
I	CHDU	ETY	VOM	RW	QP	SGJ	FA	IN	BK	XL
J	GDTX	ULM	AVK	NB	OH	IPS	RC	YF	QJ	WE
K	NXCH	IYF	BES	UW	AK	GLM	VJ	RT	OD	PQ
L	XNIS	QEO	MVL	YB	JA	GPU	WK	RF	DH	TC
M	XCJT	LGO	SQD	EI	UR	FVA	YM	NW	PB	HK
N	TVXH	RDK	EQM	CF	PW	AJO	NU	GI	YL	BS
O	PXGK	VSL	BNI	YO	MA	HEF	CT	JD	UR	QW
P	NBTG	FKH	PJR	QE	OI	SWL	MY	XU	DA	CV
Q	EMTR	LCY	SOF	WA	JI	DXP	GQ	VB	HN	KU
R	TWVO	NDJ	CLA	EX	BY	FPH	QS	IM	GK	RU
S	TLYH	ONX	KFV	CQ	DS	UBJ	EA	RW	IP	GM
T	LUCR	VBH	EGD	FM	NX	WPT	KQ	YO	SI	JA
U	YEGP	UNT	HDL	MF	SK	WIV	QA	CO	BR	JX
V	LOTU	NMR	FEJ	WQ	HS	DIV	PK	XG	AC	YB
W	AROV	EMH	UNX	CI	FD	QYB	TL	KP	JS	WG
X	IPUL	HKR	SBA	MG	FO	YCV	TX	JE	WN	QD
Y	PXYS	TVD	OMQ	RW	EC	GIN	BK	UA	HJ	FL

**NAVAIDS**

Id	Name	Channel	Position	Elevation
BOO	Bodo	45	N67 15.838 E014 20.046	43
BNK	Banak	47	N70 03.937 E024 58.181	17
OYA	Andoya	28	N69 17.175 E016 08.658	19

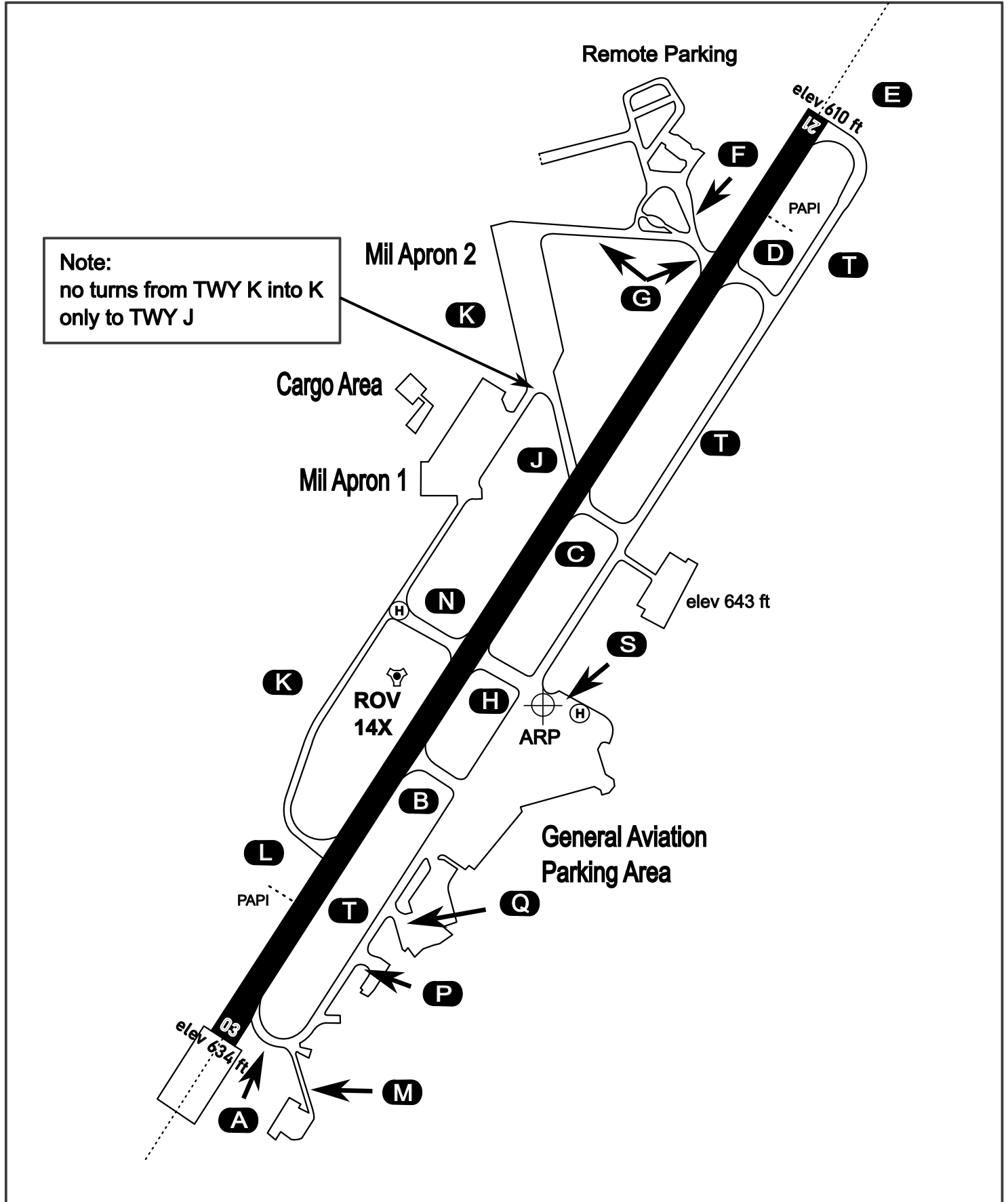
# AERODROME CHART

Rovaniemi Aerodrome

ARP N66° 33' 42" E025° 49' 51"

elev 643 ft

## ROVANIEMI, FINLAND



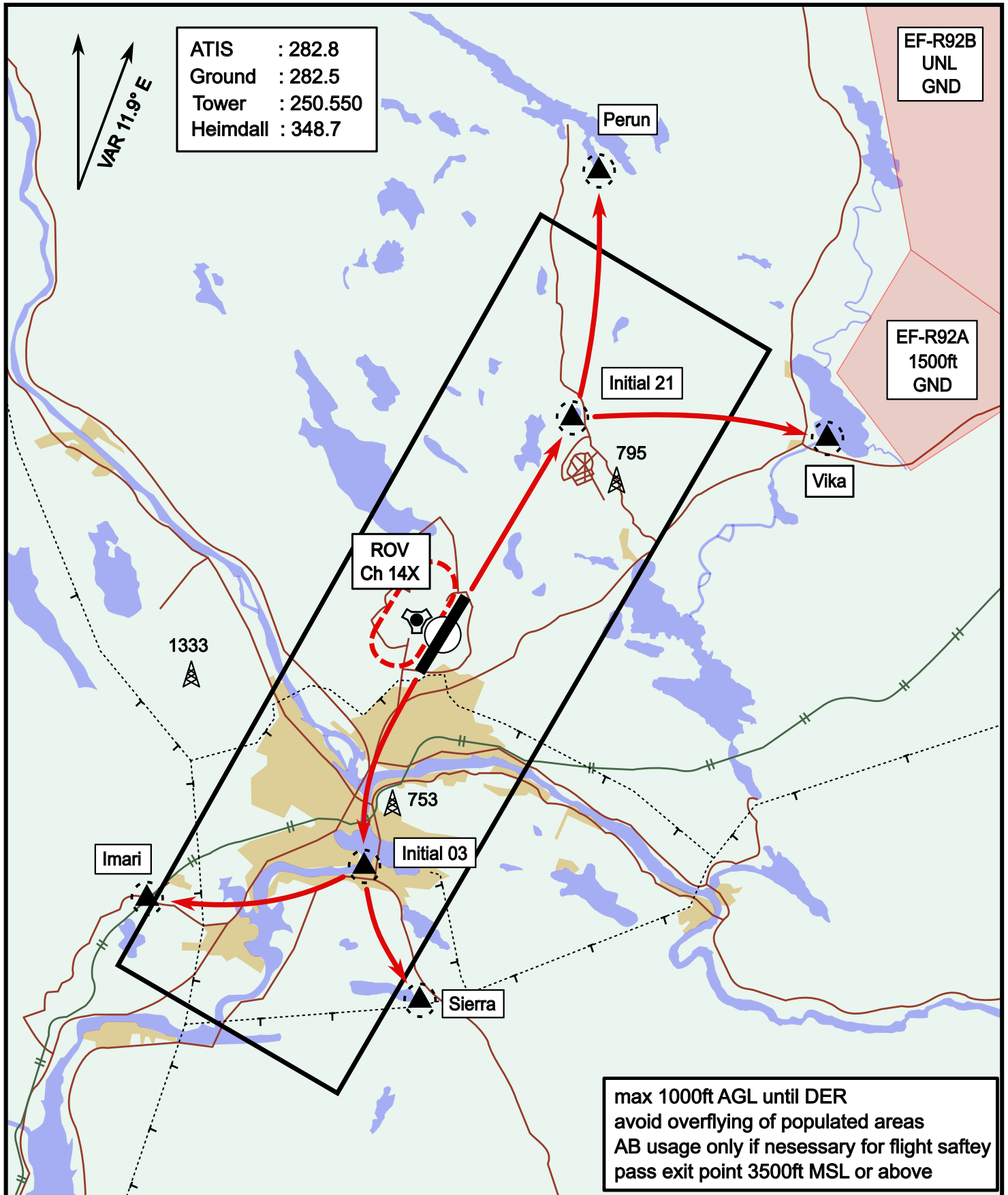
ATIS	Ground	Tower	Radar
282.800	282.500	250.550	348.700



# Visual Departure Jet

elev 643 ft

# Rovaniemi, Finland



ATIS : 282.8  
 Ground : 282.5  
 Tower : 250.550  
 Heimdall : 348.7

EF-R92B  
 UNL  
 GND

EF-R92A  
 1500ft  
 GND

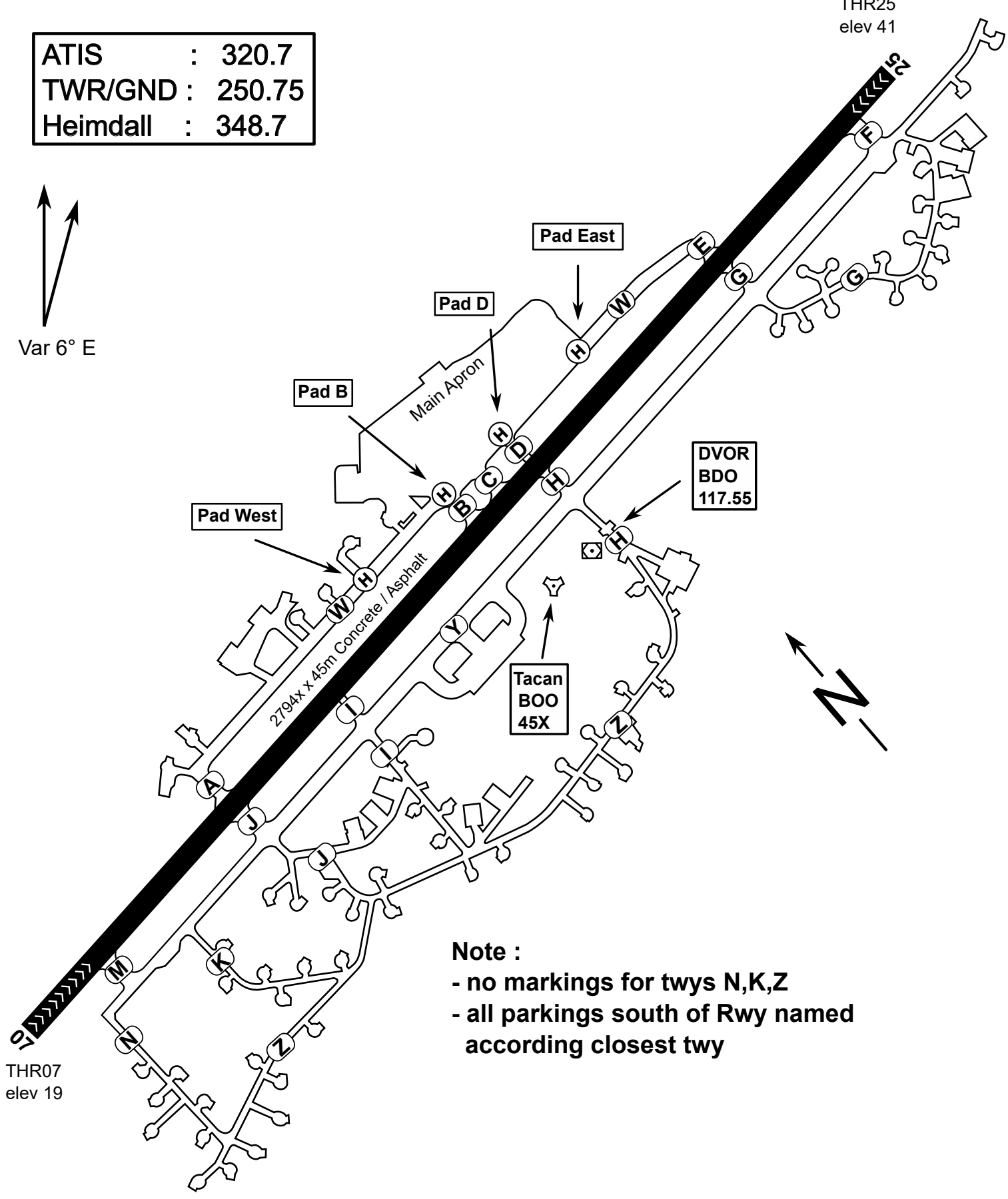
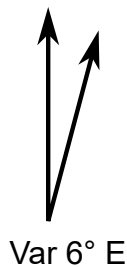
max 1000ft AGL until DER  
 avoid overflying of populated areas  
 AB usage only if necessary for flight safety  
 pass exit point 3500ft MSL or above

Vika	N66° 37.474 / E026° 13.557	Sierra	N66° 25.711 / E025° 46.610
Perun	N66° 44.135 / E026° 01.630	Imari	N66° 28.406 / E025° 31.291
Initial21	N66° 38.421 / E025° 58.682	Initial03	N66° 28.793 / E025° 44.105

**NOT AVAILABLE**

ATIS	: 320.7
TWR/GND	: 250.75
Heimdall	: 348.7

THR25  
elev 41



**Note :**

- no markings for twys N,K,Z
- all parkings south of Rwy named according closest twy

THR07  
elev 19

