

MISSION DATA CARD

OPORD		Callsign		Mission		Date/Time		
3488/2024		Tiger 3		Training		272003DEC24		
Task						Freq		
AO						261.15		
Departure				Recovery				
VFR Departure				VFR Approach				
#	Callsign		Pilot		IFF	TCN	LSR	NET
-1	Tiger 3-1		Kosmoss		1031	1Y	1551	

LOADOUT

A/A	2xA9X, A120C				GUN	100% HEI-T	
A/G	4xA88C				CHF	80	
POD	TGP				FLR	40	
TKS	FPU-8A				FUEL	50%	

TOLD

	Takeoff	Target	Joker	Bingo	Land
FUEL	7645		5000		

AIRBASES

	Name	TCN	ATIS	GND	TWR	RWY	Elev	ILS
Dep	Rovaniemi	14X	282.8	282.5	250.55	21	643	111.7
Arr	Rovaniemi	14X	282.8	282.5	250.55	21	643	111.7
Div	Rovaniemi	14X	282.8	282.5	250.55	21	643	111.7

FLIGHTPLAN

#	Name	Navaid/Coords/DME	ALT	TOT
1	Initial21	N66 38.642 E025 58.682	2500	
2	PERUN	N66 44.135 E026 01.630	3000	
3	SAM SA6	N68 22.154 E020 19.399	400	
4	IMARI	N66 28.406 E025 31.291	3000	
5	Initial03	N66 28.793 E025 44.105	2500	

COMMS

Radio	Usage
1	282.800 / 250.550 / 348.700 /282.800 / 250.550
2	261.15
3	Mids A 22
4	Mids B 44

SUPPORT**Tanker**

Callsign	TCN	Freq	ALT	TAS
SHELL 1	41Y	360.8		
Pos				

RADIO CHANNELS

#	Freq	Name
1		Flight/Squadron specific
2	282.8	Rovaniemi ATIS
3	282.5	Rovaniemi Ground
4	250.55	Rovaniemi Tower
5	320.7	Bodo ATIS
6	250.75	Bodo Tower
7	235.45	Kallax ATIS
8	250.3	Kallax Tower
9	265.0	Texaco-1 KC-135 Medium / Slow 71Y
10	319.8	Arco-1 KC-135 High / Fast 22Y
11	360.8	Shell-1 KC-135 MPRS High / Fast 41Y
12	304.0	CVN-71 Rough Rider (RRR) 71X
13	303.0	LHA-1 Tarawa (TWA) 79X
14	247.8	S-3B Mauler-1 (MAU) 64Y
15	347.8	Loki (E-2D)
16	348.7	Heimdall (E-3A)
17	242.17	ESR02 - CAS Range Operator
18	34.7	ESR02 - JTAC Odin
19	270.5	Blue
20	270.75	Red

RAMROD

0	1	2	3	4	5	6	7	8	9
B	L	U	S	T	E	R	I	N	G

KTC 1400 C

	0	1	2	3	4	5	6	7	8	9
A	UTBG	QHW	NXE	RF	IL	MYA	DV	OJ	PS	KC
B	SWGR	QEI	LJT	HM	YD	KOP	VB	FU	NA	XC
C	LWKN	IBP	EDU	HS	MG	ATF	JC	XY	QO	VR
D	VWIX	SDT	HAM	CP	OU	NBR	QF	GE	JK	YL
E	BREO	MFS	GKX	WJ	TU	QCA	HP	VL	NY	ID
F	AXGV	JNP	TIK	RW	YQ	MEC	UL	SO	DB	HF
G	QHIT	AGY	SRX	PK	MJ	COB	UN	EL	FW	VD
H	QTJG	FWA	SKU	OE	DX	MBR	VP	LN	CI	HY
I	CLMO	FUS	IGW	HK	DB	VTA	XR	EY	QN	JP
J	DRVU	WNB	LYG	IX	AC	JTK	QS	OM	EP	HF
K	HLMR	JUD	GCE	TK	WO	BQN	YX	AP	VS	IF
L	DWEL	IXT	FQC	KO	MV	YUB	PR	HG	JN	AS
M	DJTA	CIU	PBM	RF	LX	HWN	SO	KV	EQ	GY
N	QAJY	VKN	EDW	CI	SU	XGP	BO	LT	FH	MR
O	JMDL	YHC	KRO	AX	WT	GPI	NE	FQ	SB	VU
P	FRPS	CNO	GQW	XV	DL	AYU	MH	TB	IJ	EK
Q	CLNI	PRH	YFS	TU	KA	WJE	XB	DM	GV	QO
R	WDRJ	ESV	NYU	FT	HB	QOG	XC	AP	LI	KM
S	SGXK	ONW	AQL	VR	YJ	UBH	CT	PD	EM	FI
T	EDBG	JNO	VRP	WQ	MX	UCH	AT	FS	LK	IY
U	UCDM	OGJ	BVL	WK	IY	NQT	PS	HX	RA	EF
V	GOUC	SEA	MNK	FV	QB	PDR	XY	HW	JL	TI
W	ICBU	AEH	WFX	LY	DQ	VNS	RP	OT	KM	GJ
X	RVPF	JLH	DEG	MX	KB	NWU	YO	ST	IA	QC
Y	TPNV	MUC	RSO	GE	FH	JWY	DA	IK	LX	QB

NAVAIDS

Id	Name	Channel	Position	Elevation
BOO	Bodo	45	N67 15.838 E014 20.046	43
BNK	Banak	47	N70 03.937 E024 58.181	17
OYA	Andoya	28	N69 17.175 E016 08.658	19

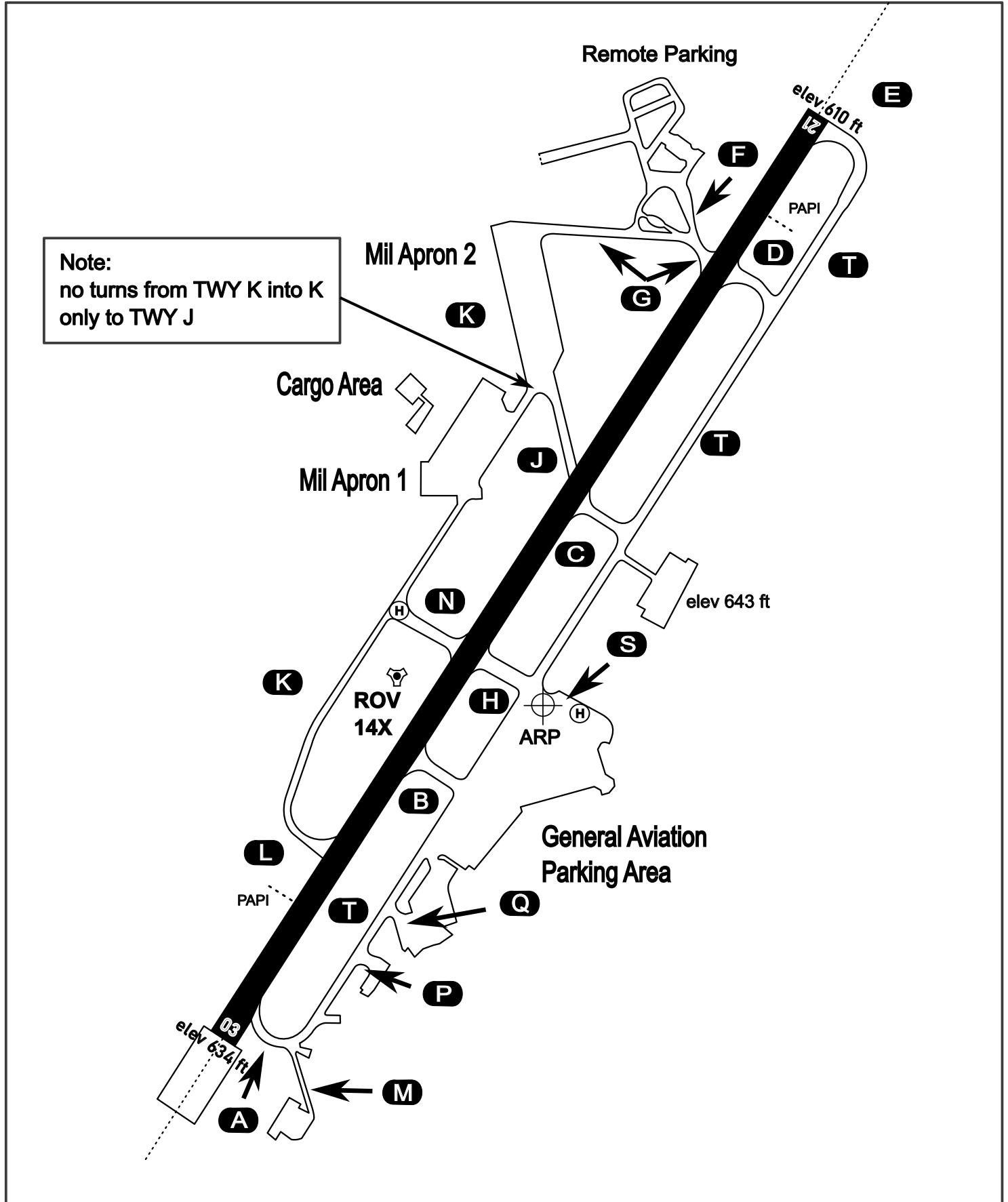
AERODROME CHART

Rovaniemi Aerodrome

ARP N66° 33' 42" E025° 49' 51"

elev 643 ft

ROVANIEMI, FINLAND

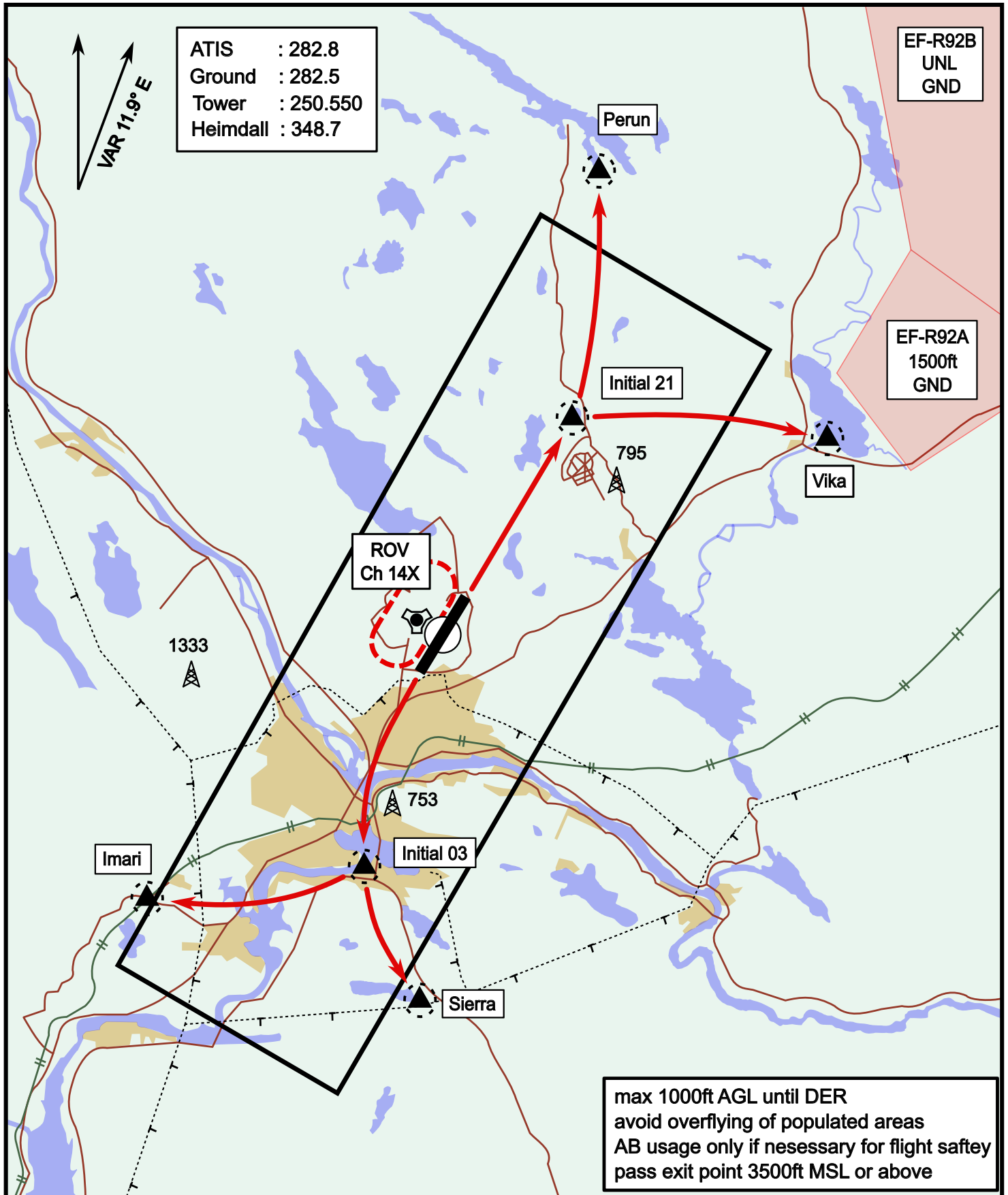


ATIS	Ground	Tower	Radar
282.800	282.500	250.550	348.700

Visual Departure Jet

elev 643 ft

Rovaniemi, Finland



ATIS : 282.8
 Ground : 282.5
 Tower : 250.550
 Heimdall : 348.7

EF-R92B
 UNL
 GND

EF-R92A
 1500ft
 GND

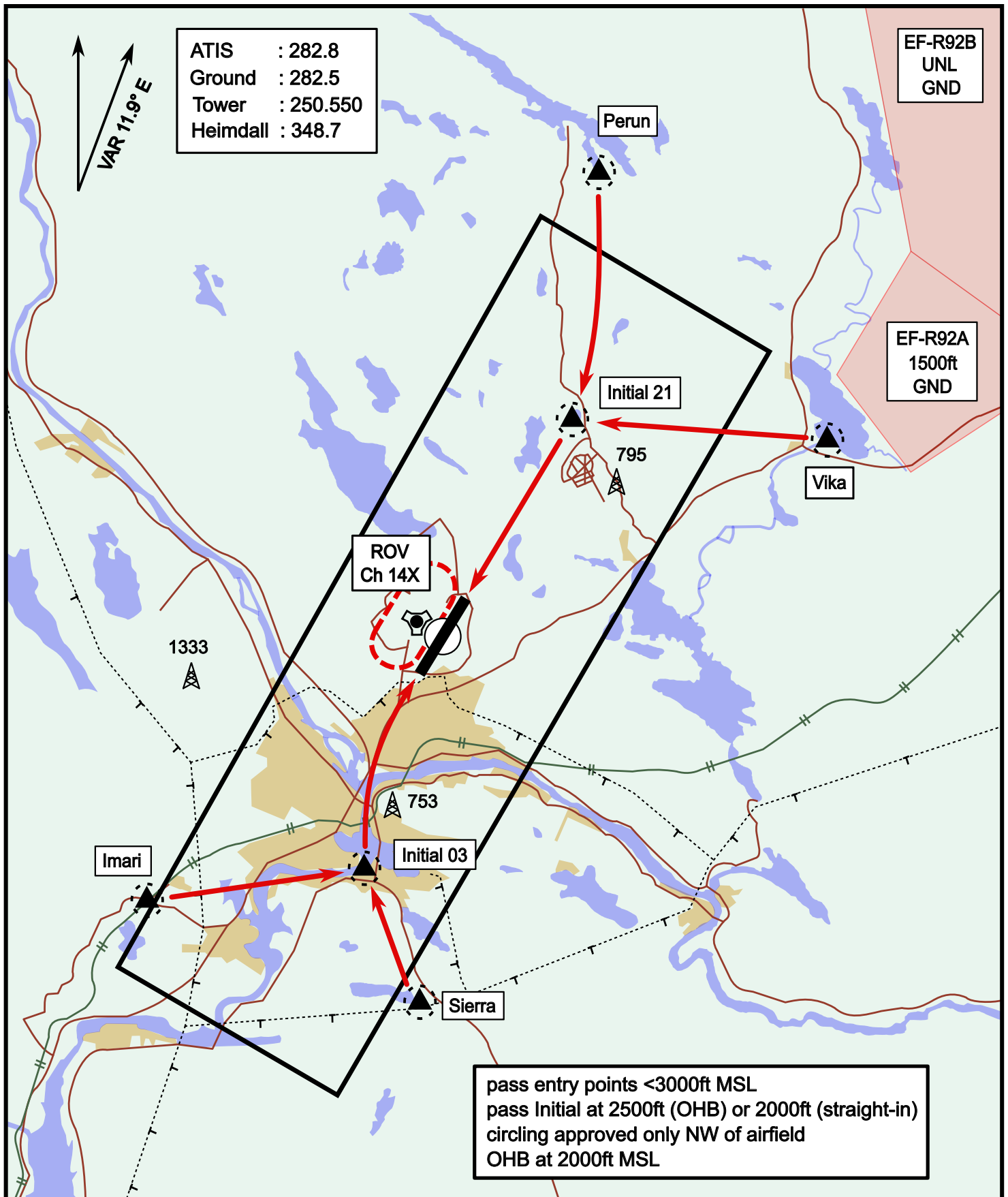
max 1000ft AGL until DER
 avoid overflying of populated areas
 AB usage only if necessary for flight safety
 pass exit point 3500ft MSL or above

Vika	N66° 37.474 / E026° 13.557	Sierra	N66° 25.711 / E025° 46.610
Perun	N66° 44.135 / E026° 01.630	Imari	N66° 28.406 / E025° 31.291
Initial21	N66° 38.421 / E025° 58.682	Initial03	N66° 28.793 / E025° 44.105

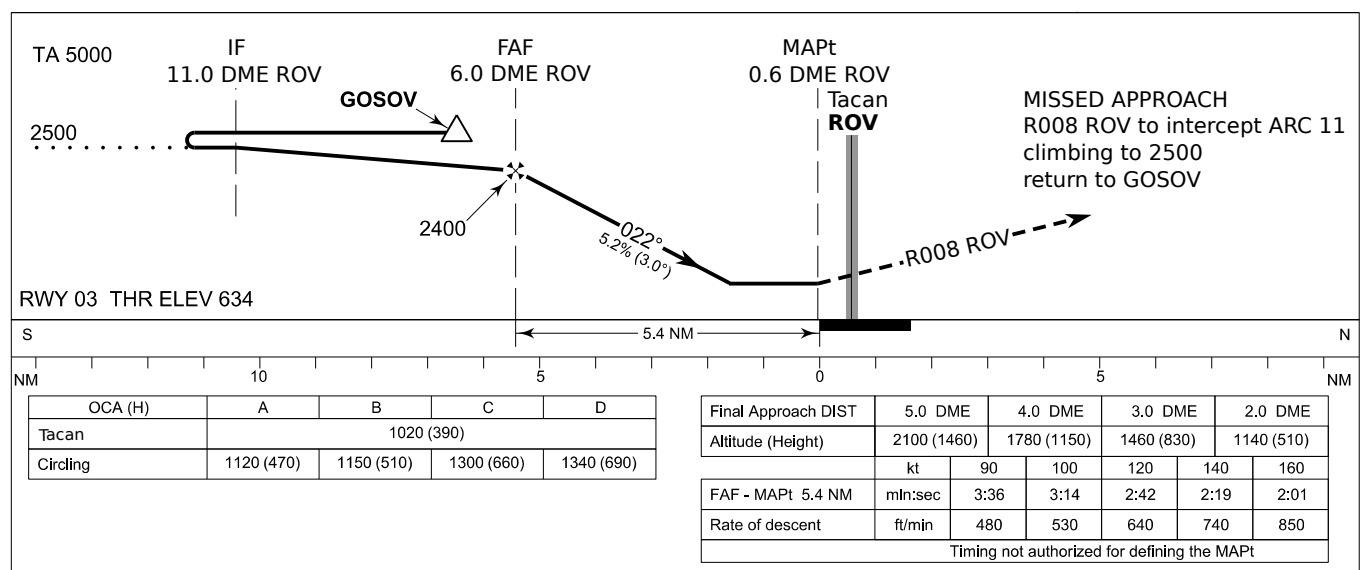
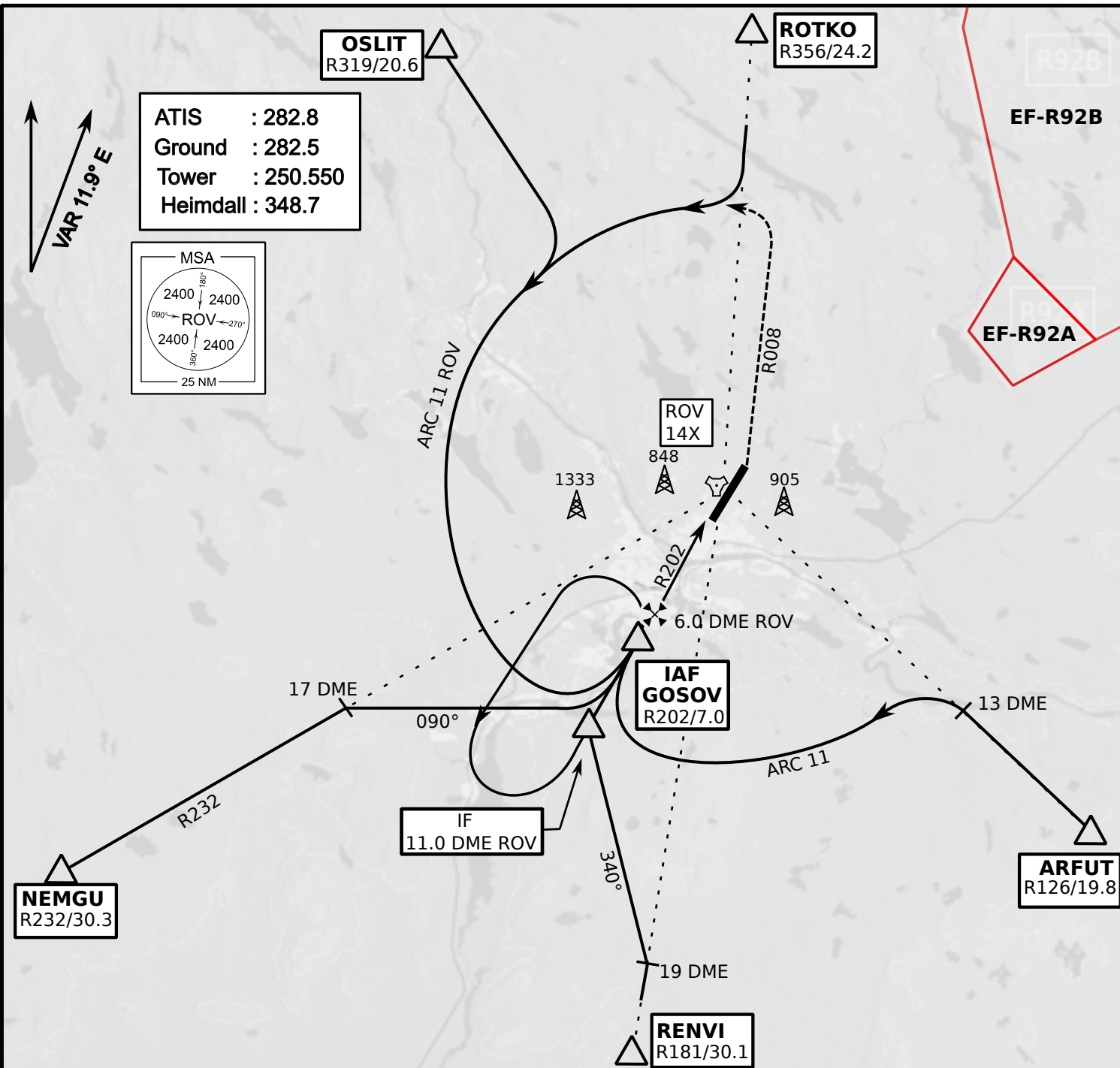
Visual Approach Jet

elev 643 ft

Rovaniemi, Finland



Vika	N66° 37.474 / E026° 13.557	Sierra	N66° 25.711 / E025° 46.610
Perun	N66° 44.135 / E026° 01.630	Imari	N66° 28.406 / E025° 31.291
Initial21	N66° 38.421 / E025° 58.682	Initial03	N66° 28.793 / E025° 44.105



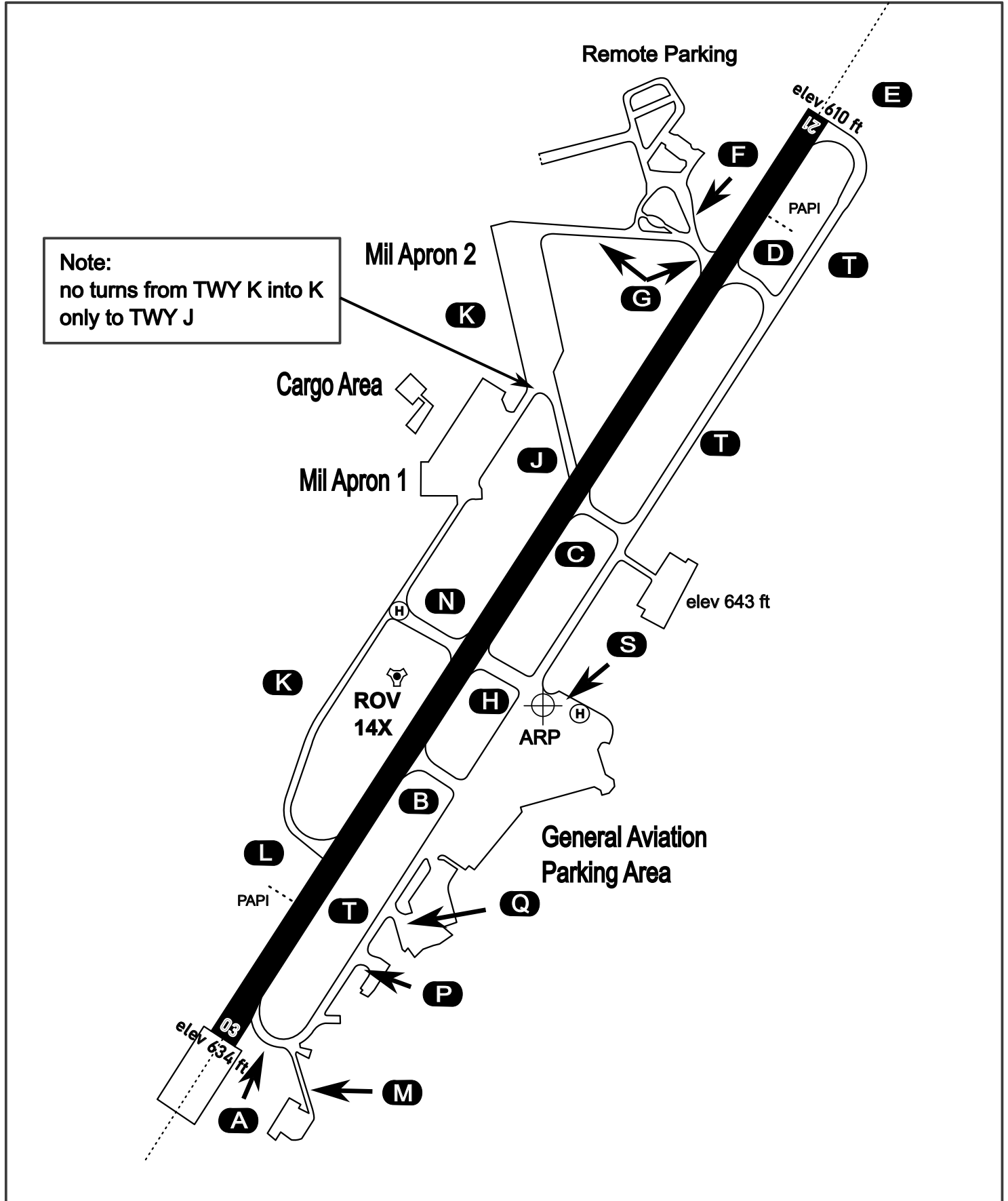
AERODROME CHART

Rovaniemi Aerodrome

ARP N66° 33' 42" E025° 49' 51"

elev 643 ft

ROVANIEMI, FINLAND



ATIS	Ground	Tower	Radar
282.800	282.500	250.550	348.700