

MISSION DATA CARD

OPORD		Callsign		Mission		Date/Time		
3486/2024		Tiger 1		Training		232007DEC24		
Task	Anti Ship					Freq		
AO	ENR06					261.15		
Departure				Recovery				
CAT				VFR Approach				
#	Callsign		Pilot		IFF	TCN	LSR	NET
-1	Tiger 1-1		Kosmoss		1011	1Y	1551	

LOADOUT

A/A	2xA9X, A120C				GUN	100% HEI-T	
A/G	2xA65F, 2xA84D				CHF	120	
POD	TGP				FLR	0	
TKS	FPU-8A				FUEL	100%	

TOLD

	Takeoff	Target	Joker	Bingo	Land
FUEL	13047			5000	

AIRBASES

	Name	TCN	ATIS	GND	TWR	RWY	Elev	ILS
Dep	CVN-71 USS Theodore Roosevelt	71X		ICLS 7	304.0			
Arr	Rovaniemi	14X	282.8	282.5	250.55	21	643	111.7
Div	Bodo	45X	320.7		250.75	25	19	110.3

FLIGHTPLAN

#	Name	Navaid/Coords/DME	ALT	TOT
1	T.ENR03 Anti Ship 01	N66 23.323 E012 36.440	-168	
2	IMARI	N66 28.406 E025 31.291	3000	
3	Initial21	N66 38.642 E025 58.682	2500	

COMMS

Radio	Usage
1	304.00 / 348.700 / 282.800 / 250.550
2	261.15
3	Mids A 22
4	Mids B 44

SUPPORT**Tanker**

Callsign	TCN	Freq	ALT	TAS
SHELL 1	41Y	360.8		
Pos				

RADIO CHANNELS

#	Freq	Name
1		Flight/Squadron specific
2	282.8	Rovaniemi ATIS
3	282.5	Rovaniemi Ground
4	250.55	Rovaniemi Tower
5	320.7	Bodo ATIS
6	250.75	Bodo Tower
7	235.45	Kallax ATIS
8	250.3	Kallax Tower
9	265.0	Texaco-1 KC-135 Medium / Slow 71Y
10	319.8	Arco-1 KC-135 High / Fast 22Y
11	360.8	Shell-1 KC-135 MPRS High / Fast 41Y
12	304.0	CVN-71 Rough Rider (RRR) 71X
13	303.0	LHA-1 Tarawa (TWA) 79X
14	247.8	S-3B Mauler-1 (MAU) 64Y
15	347.8	Loki (E-2D)
16	348.7	Heimdall (E-3A)
17	242.17	ESR02 - CAS Range Operator
18	34.7	ESR02 - JTAC Odin
19	270.5	Blue
20	270.75	Red

RAMROD

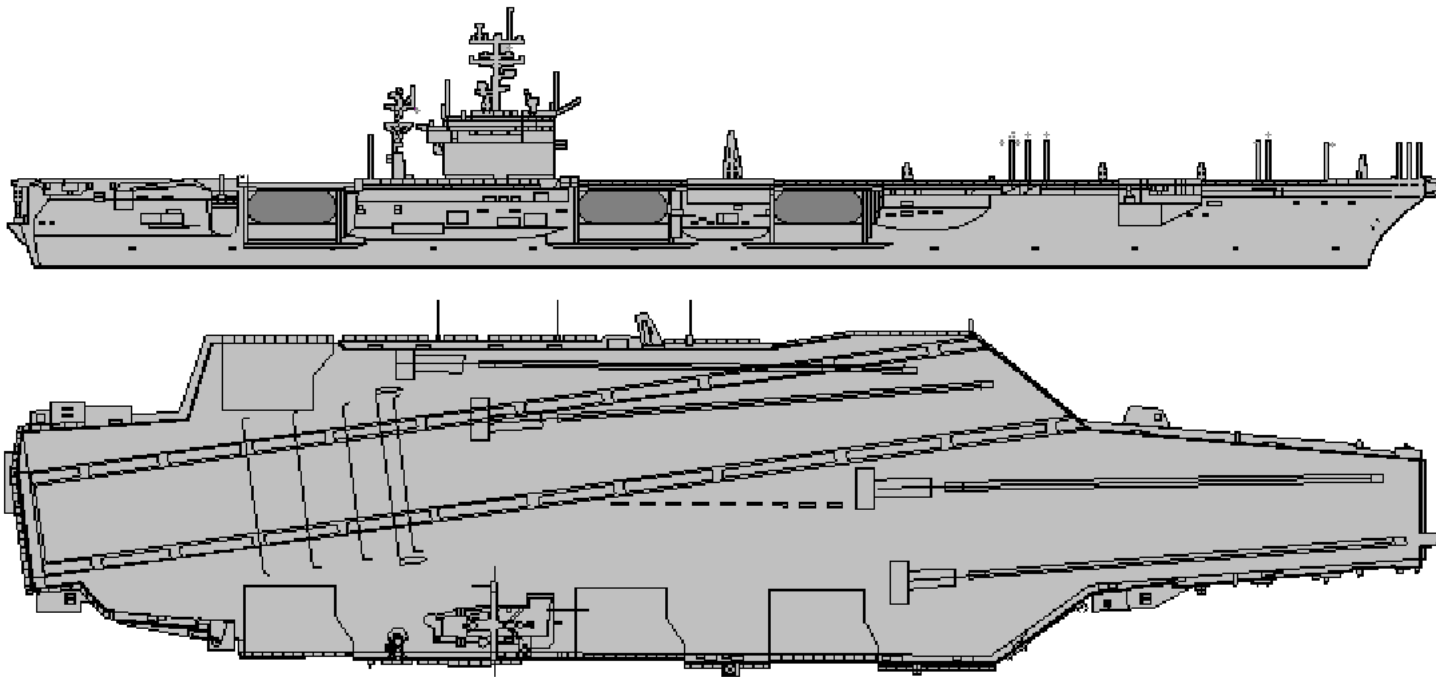
0	1	2	3	4	5	6	7	8	9
C	L	U	S	T	E	R	I	N	G

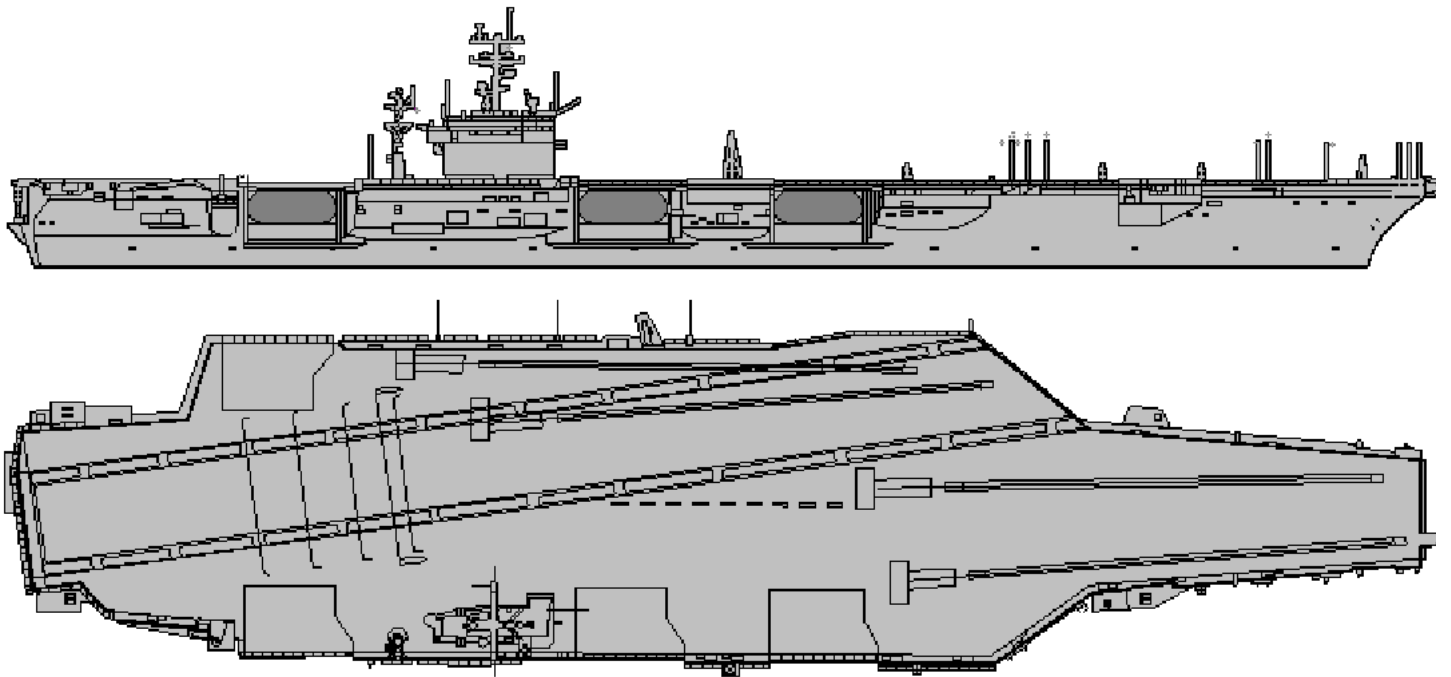
KTC 1400 C

	0	1	2	3	4	5	6	7	8	9
A	BLPT	RVJ	FNC	DE	OK	GIX	UM	WQ	AH	SY
B	XWRP	CNL	TEJ	VH	KD	QYA	MF	GB	SU	IO
C	DHNJ	YKA	OQL	SI	VF	WGC	EP	RU	XT	BM
D	USNR	OIG	EHQ	PJ	TA	LBK	FV	YW	CD	MX
E	GYOJ	BCM	PAK	FL	HD	WVS	RU	QI	TX	EN
F	YFVC	TBP	DXA	UW	LE	RJN	KQ	IO	HS	MG
G	GHVN	JAE	DSB	OW	LX	CIF	TM	KP	QY	UR
H	MSKH	FWD	NRY	XT	IU	BGC	PQ	AE	VO	JL
I	XBJU	YQL	ISO	CG	AW	FKN	EH	VR	MT	PD
J	RXYO	JHI	GWV	MP	AK	ENQ	SC	FD	LU	TB
K	UWFM	LOE	AIG	NC	YX	VHQ	TK	JD	SB	PR
L	XKAW	EUF	DOR	TY	CM	SBV	GJ	HL	PQ	IN
M	ARQT	YMX	KBH	NE	WG	LFP	VD	SU	OJ	IC
N	WFKD	MUV	IQX	YP	BA	RHS	GE	JO	TN	LC
O	QAGR	CEW	TSH	YD	MO	IVF	KL	NU	XP	BJ
P	VADX	GCU	KNW	QL	BJ	IEY	TO	HF	SR	MP
Q	FMNO	TJW	BVY	PH	EK	LCI	AU	GX	QD	SR
R	QVTM	LKG	CNB	DF	HE	ARO	IJ	SU	WY	XP
S	BGTV	RKJ	EWU	FC	OQ	HSI	MP	AN	XL	YD
T	JOCE	ARD	HTN	WS	GK	IUB	FM	QL	YX	VP
U	PWCT	IHB	DXO	VJ	AL	QFE	MY	KS	UG	NR
V	PWNU	EVL	FRY	DX	SI	AOJ	QK	HC	GB	TM
W	LKXE	HMV	CFJ	AS	UD	ROT	BQ	PG	IN	WY
X	YHVD	LWG	ORQ	SE	XB	PNF	IC	TU	AK	MJ
Y	ISOC	YMH	ALE	JF	BW	KTG	NR	UQ	PV	DX

NAVAIDS

Id	Name	Channel	Position	Elevation
BOO	Bodo	45	N67 15.838 E014 20.046	43
BNK	Banak	47	N70 03.937 E024 58.181	17
OYA	Andoya	28	N69 17.175 E016 08.658	19

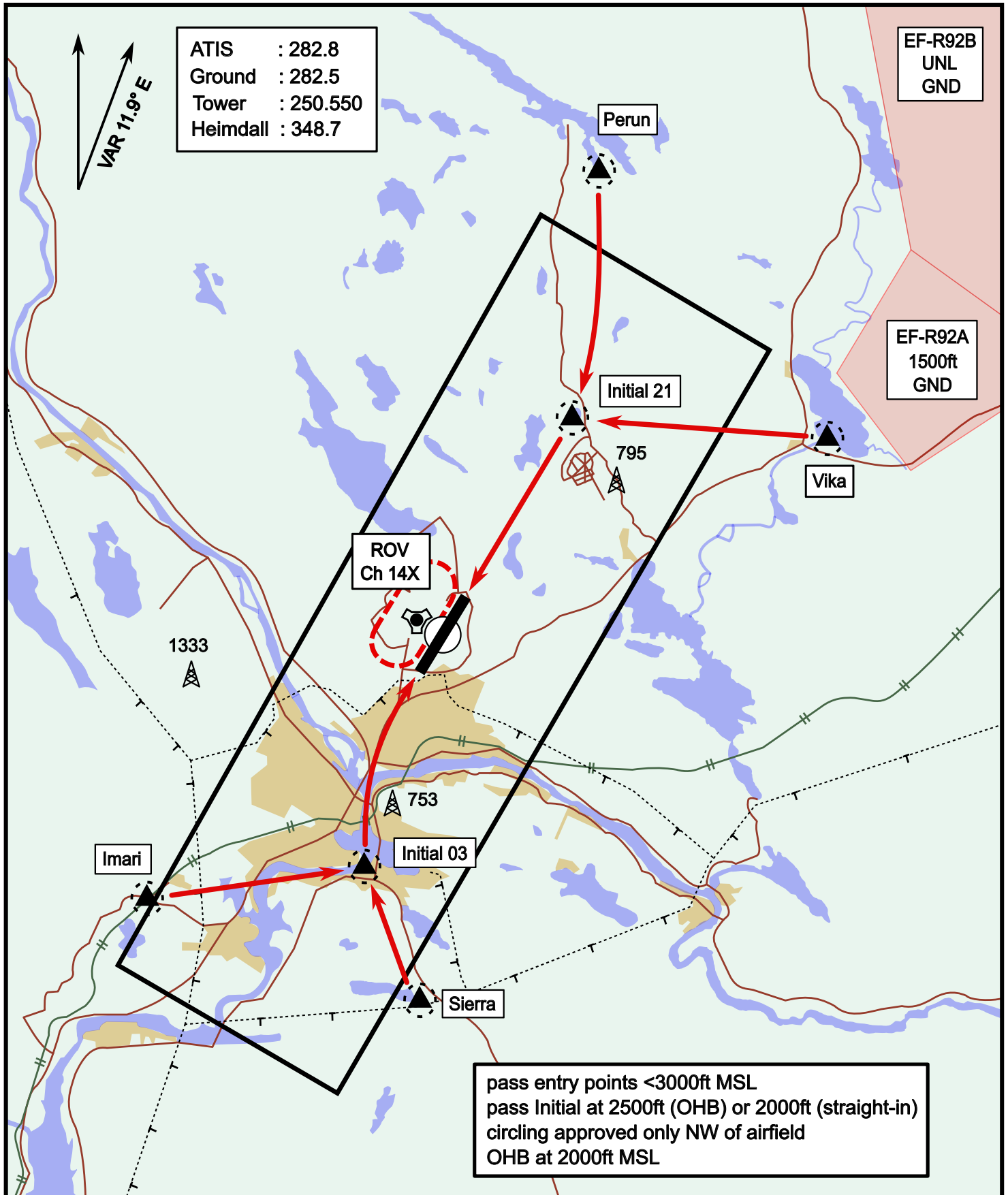




Visual Approach Jet

elev 643 ft

Rovaniemi, Finland



Vika	N66° 37.474 / E026° 13.557	Sierra	N66° 25.711 / E025° 46.610
Perun	N66° 44.135 / E026° 01.630	Imari	N66° 28.406 / E025° 31.291
Initial21	N66° 38.421 / E025° 58.682	Initial03	N66° 28.793 / E025° 44.105

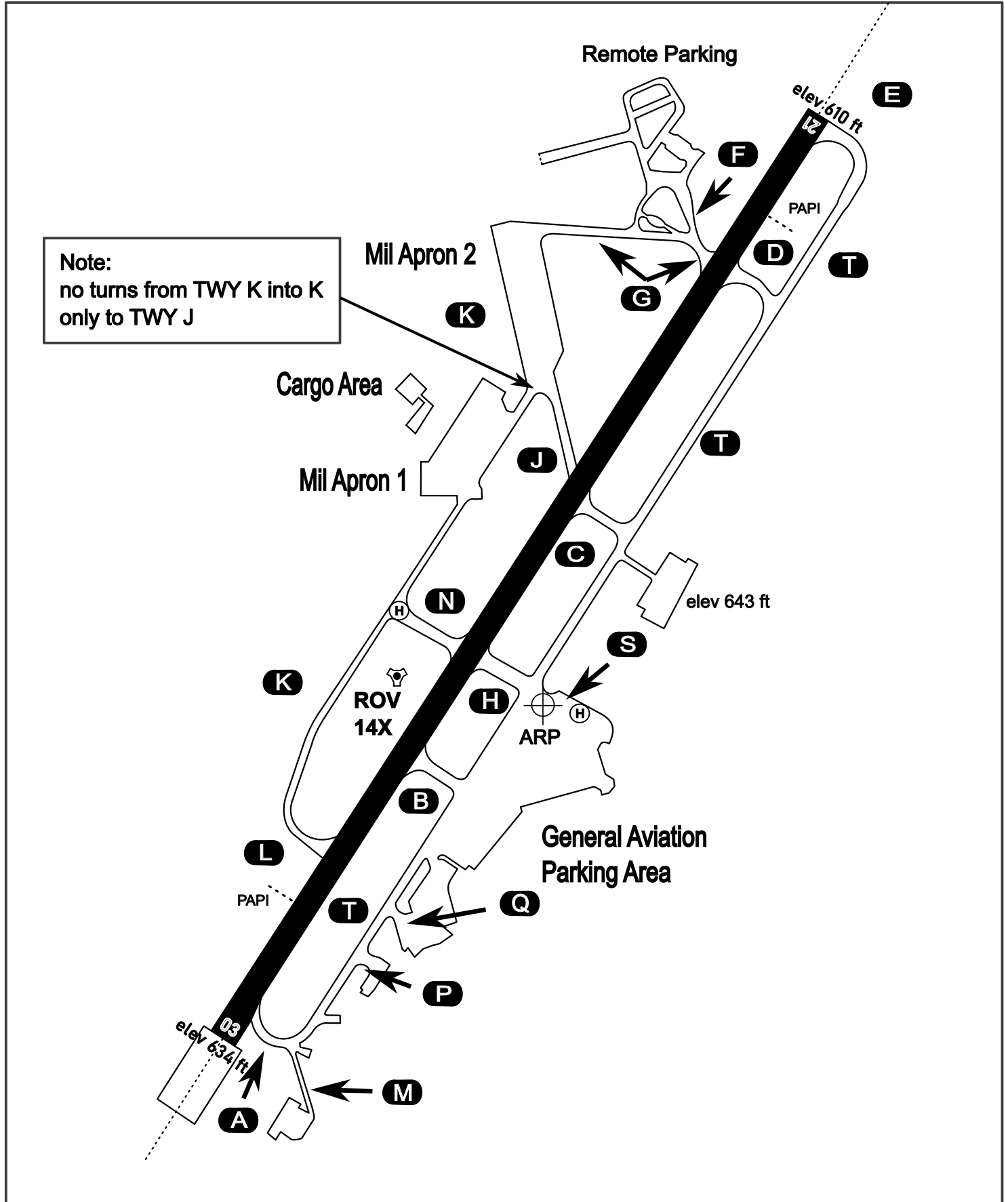
AERODROME CHART

Rovaniemi Aerodrome

ARP N66° 33' 42" E025° 49' 51"

elev 643 ft

ROVANIEMI, FINLAND

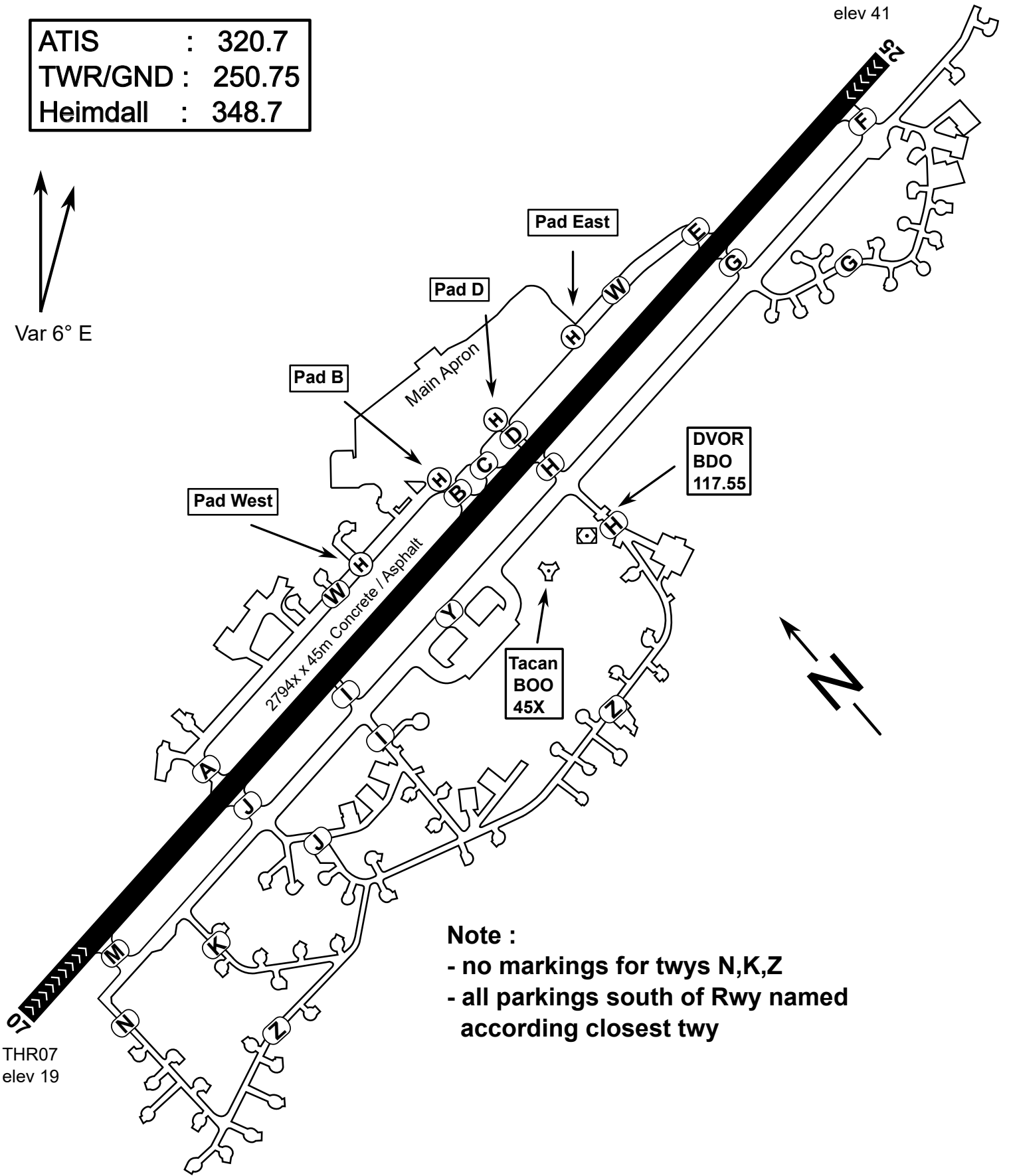
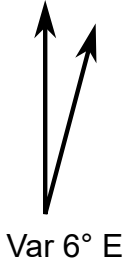


ATIS	Ground	Tower	Radar
282.800	282.500	250.550	348.700

NOT AVAILABLE

ATIS	: 320.7
TWR/GND	: 250.75
Heimdall	: 348.7

THR25
elev 41



Note :

- no markings for twys N,K,Z
- all parkings south of Rwy named according closest twy

THR07
elev 19