

**MISSION DATA CARD**

OPORD		Callsign		Mission		Date/Time		
3485/2024		Tiger 3		Training		200000DEC24		
Task	Bomb Pattern					Freq		
AO	ESR01					134.0		
Departure				Recovery				
VFR Departure				VFR Approach				
#	Callsign		Pilot		IFF	TCN	LSR	NET
-1	Tiger 3-1		Kosmoss		1011	1Y	1531	

**LOADOUT**

A/A	2xA9X, A120C				GUN	100% HEI-T	
A/G	2xG12, 2xA65F, 2xM82				CHF	120	
POD	TGP				FLR	0	
TKS	FPU-8A				FUEL	100%	

**TOLD**

	Takeoff	Target	Joker	Bingo	Land
FUEL	13047				

**AIRBASES**

	Name	TCN	ATIS	GND	TWR	RWY	Elev	ILS
Dep	Rovaniemi	14X	282.8	282.5	250.55	21	643	111.7
Arr	Rovaniemi	14X	282.8	282.5	250.55	21	643	111.7

**FLIGHTPLAN**

#	Name	Navaid/Coords/DME	ALT	TOT
1	Initial21	N66 38.642 E025 58.682	2500	
2	PERUN	N66 44.135 E026 01.630	4000	
3	NAFFI	N67 04.630 E023 11.660	25000	
4	SEPJA	N67 27.300 E021 12.080	25000	
5	TGT	N66 04.309 E023 15.043	236	
6	IMARI	N66 28.406 E025 31.291	3000	
7	Initial03	N66 28.793 E025 44.105	2500	

## NOTES

Harddeck 12000ft

**SUPPORT****Tanker**

Callsign	TCN	Freq	ALT	TAS
SHELL 1	41Y	360.8		
	Pos			

**AWACS**

Callsign	Freq	ALT	Pos
HEIMDALL	348.7		

## RADIO CHANNELS

#	Freq	Name
1		Flight/Squadron specific
2	282.8	Rovaniemi ATIS
3	282.5	Rovaniemi Ground
4	250.55	Rovaniemi Tower
5	320.7	Bodo ATIS
6	250.75	Bodo Tower
7	235.45	Kallax ATIS
8	250.3	Kallax Tower
9	265.0	Texaco-1   KC-135   Medium / Slow   71Y
10	319.8	Arco-1   KC-135   High / Fast   22Y
11	360.8	Shell-1   KC-135 MPRS   High / Fast   41Y
12	304.0	CVN-71 Rough Rider (RRR)   71X
13	303.0	LHA-1 Tarawa (TWA)   79X
14	247.8	S-3B Mauler-1 (MAU)  64Y
15	347.8	Loki (E-2D)
16	348.7	Heimdall (E-3A)
17	242.17	ESR02 - CAS Range Operator
18	34.7	ESR02 - JTAC Odin
19	270.5	Blue
20	270.75	Red

**RAMROD**

0	1	2	3	4	5	6	7	8	9
S	Y	M	P	A	T	H	I	Z	E

**KTC 1400 C**

	0	1	2	3	4	5	6	7	8	9
A	WJXN	FDY	OQK	CU	AB	IMP	SL	VT	RG	EH
B	KCNQ	XAY	LDI	HR	VJ	FWE	GU	SM	OP	TB
C	HCIU	QSR	LTV	KJ	GW	BND	PM	FE	XY	AO
D	EVWN	APH	DLM	YJ	UG	BTO	SF	QR	IX	KC
E	EROV	TUF	KDY	GN	HM	BCQ	AP	WJ	SI	LX
F	LMQH	SUC	FND	WA	TG	XRO	IE	KB	PV	YJ
G	COKA	ERJ	TFN	WB	XG	MSY	VL	IU	QP	DH
H	VHLU	JBS	NCK	DT	PI	QMR	GO	WF	XY	EA
I	WOLI	MVN	BPY	CX	QF	HST	UJ	KR	AD	GE
J	HOPS	XQY	DAM	CF	LT	BIK	VJ	UW	RE	NG
K	YNOR	XTG	LHM	CW	DQ	AUJ	IK	SE	VP	FB
L	MDBE	XIV	URT	OS	KW	QNA	CP	FL	HY	GJ
M	VESJ	NKC	AQR	BD	HI	WMX	GU	LT	OP	FY
N	PCUY	LXS	BFH	NI	JR	TGO	VW	ED	MQ	AK
O	OJTU	INH	XFD	KY	VQ	ARE	LG	WP	CM	BS
P	MBHT	PFD	SKG	YJ	RX	IQL	ON	VC	WU	AE
Q	NIER	STX	DCU	FW	PH	BLK	MG	JY	AQ	VO
R	EDCR	YQH	TNS	KI	WP	LJV	MA	GU	OB	XF
S	DYUP	RAE	GVO	FS	XJ	CMK	BQ	TH	IL	WN
T	BEJR	QOA	PNT	KD	FM	UHI	CY	LV	WS	XG
U	AHYK	FRO	BXQ	CN	WI	MPG	LD	ES	TV	UJ
V	BFRE	KSO	MLD	AY	TJ	XPH	UW	CQ	NG	IV
W	XPQB	LKM	CSR	YD	IH	UAJ	GV	EF	WO	NT
X	ETXP	FNY	HIS	MU	DW	LBQ	AJ	VO	CG	KR
Y	IWKV	TUG	EHF	AX	QR	NYB	LS	OD	MJ	CP

**NAVAIDS**

Id	Name	Channel	Position	Elevation
BOO	Bodo	45	N67 15.838 E014 20.046	43
BNK	Banak	47	N70 03.937 E024 58.181	17
OYA	Andoya	28	N69 17.175 E016 08.658	19

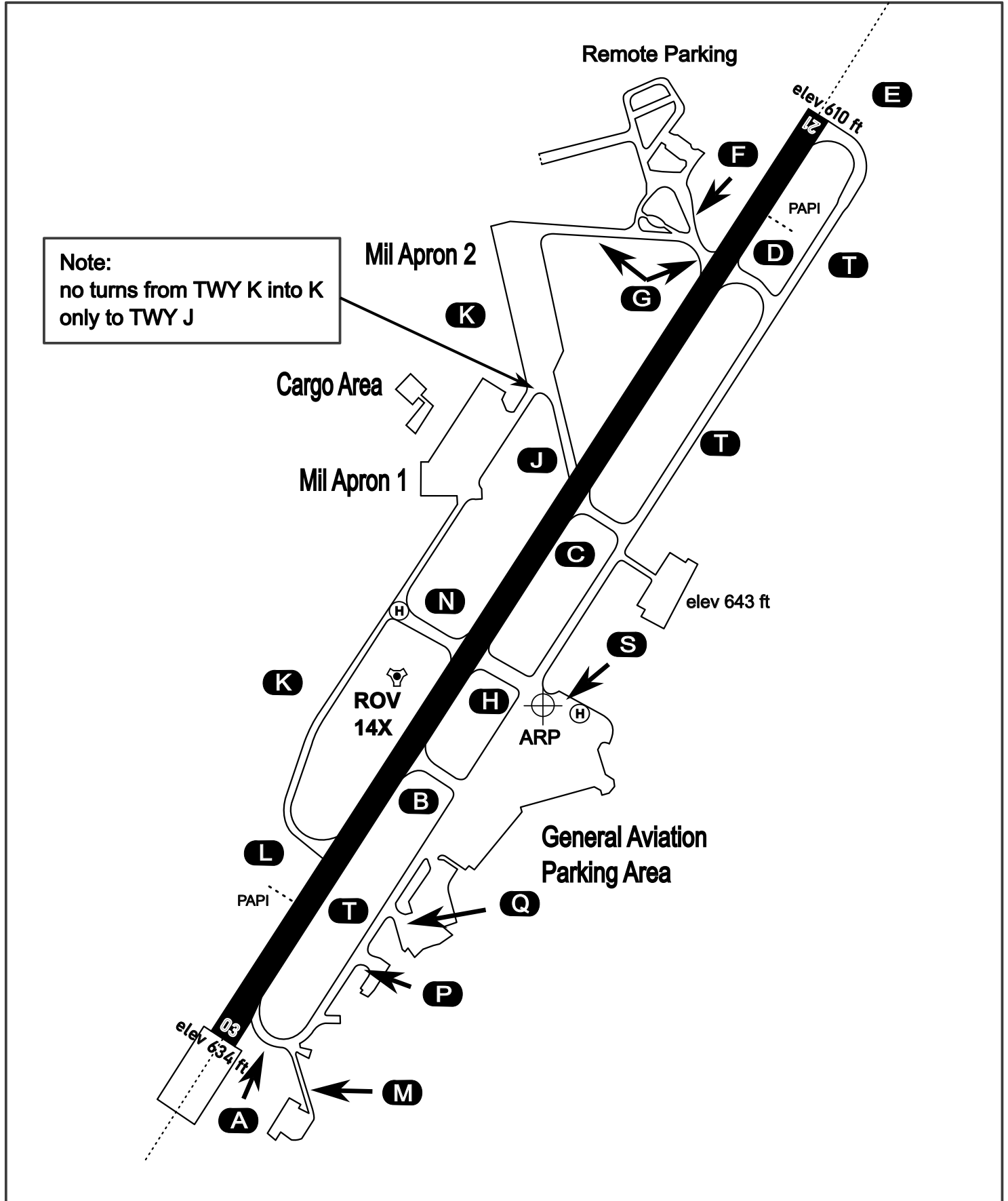
# AERODROME CHART

Rovaniemi Aerodrome

ARP N66° 33' 42" E025° 49' 51"

elev 643 ft

## ROVANIEMI, FINLAND



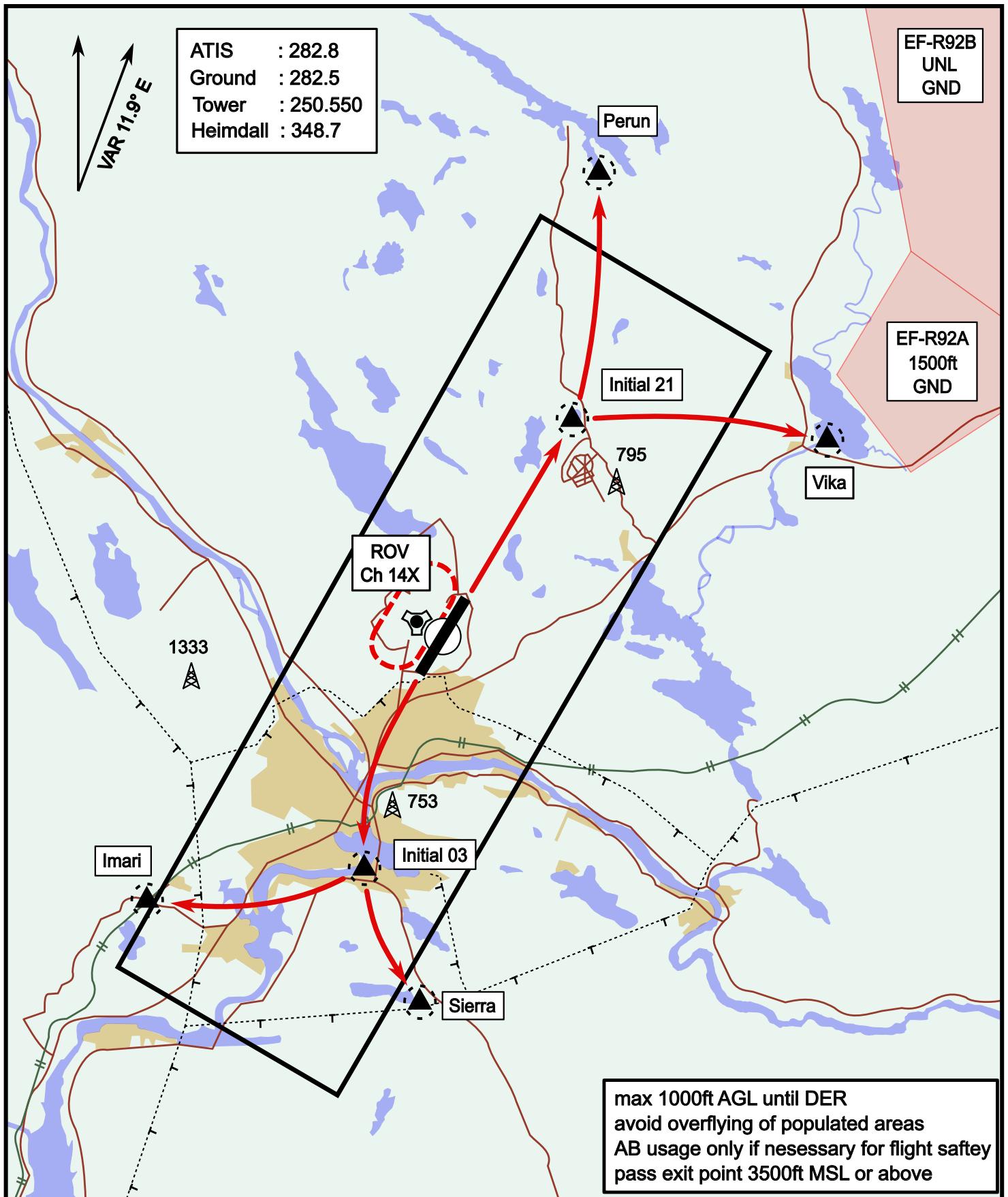
ATIS	Ground	Tower	Radar
282.800	282.500	250.550	348.700



# Visual Departure Jet

elev 643 ft

# Rovaniemi, Finland



Vika	N66° 37.474 / E026° 13.557	Sierra	N66° 25.711 / E025° 46.610
Perun	N66° 44.135 / E026° 01.630	Imari	N66° 28.406 / E025° 31.291
Initial21	N66° 38.421 / E025° 58.682	Initial03	N66° 28.793 / E025° 44.105

# Visual Approach Jet

elev 643 ft

# Rovaniemi, Finland



Vika	N66° 37.474 / E026° 13.557	Sierra	N66° 25.711 / E025° 46.610
Perun	N66° 44.135 / E026° 01.630	Imari	N66° 28.406 / E025° 31.291
Initial21	N66° 38.421 / E025° 58.682	Initial03	N66° 28.793 / E025° 44.105