

**MISSION DATA CARD**

OPORD		Callsign		Mission		Date/Time		
3484/2024		Raptor 1		Training		190000DEC24		
Task	Bomb Pattern					Freq		
AO	ESR03					134.0		
Departure				Recovery				
VFR Depature				VFR Approach				
#	Callsign		Pilot		IFF	TCN	LSR	NET
-1	Raptor 1-1		Hercules		1721	1Y	1721	
-2	Raptor 1-2		Jinx		1722	64Y	1722	

**LOADOUT**

A/A	2xA120C, 2xA9X					GUN	100% HEI-T
A/G	6xG12					CHF	60
POD	HTS, TGP					FLR	60
TKS	FT300					FUEL	100%

**TOLD**

	Takeoff	Target	Joker	Bingo	Land
FUEL	9166				

**AIRBASES**

	Name	TCN	ATIS	GND	TWR	RWY	Elev	ILS
Dep	Rovaniemi	14X	282.8	282.5	250.55	21	643	111.7
Arr	Rovaniemi	14X	282.8	282.5	250.55	21	643	111.7
Div	Rovaniemi	14X	282.8	282.5	250.55	21	643	111.7

**FLIGHTPLAN**

#	Name	Navaid/Coords/DME	ALT	TOT
1	Initial21	N66 38.642 E025 58.682	2500	
2	PERUN	N66 44.135 E026 01.630	4000	
3	NAFFI	N67 04.630 E023 11.660	25000	
4	SEPJA	N67 27.300 E021 12.080	25000	
5	TGT	N66 04.309 E023 15.043	236	
6	IMARI	N66 28.406 E025 31.291	3000	
7	Initial03	N66 28.793 E025 44.105	2500	

## NOTES

Harddeck 12000ft

**SUPPORT****Tanker**

Callsign	TCN	Freq	ALT	TAS
ARCO 1	22Y	319.8		
	Pos			

**AWACS**

Callsign	Freq	ALT	Pos
HEIMDALL	348.7		

## RADIO CHANNELS

#	Freq	Name
1		Flight/Squadron specific
2	282.8	Rovaniemi ATIS
3	282.5	Rovaniemi Ground
4	250.55	Rovaniemi Tower
5	320.7	Bodo ATIS
6	250.75	Bodo Tower
7	235.45	Kallax ATIS
8	250.3	Kallax Tower
9	265.0	Texaco-1   KC-135   Medium / Slow   71Y
10	319.8	Arco-1   KC-135   High / Fast   22Y
11	360.8	Shell-1   KC-135 MPRS   High / Fast   41Y
12	304.0	CVN-71 Rough Rider (RRR)   71X
13	303.0	LHA-1 Tarawa (TWA)   79X
14	247.8	S-3B Mauler-1 (MAU)  64Y
15	347.8	Loki (E-2D)
16	348.7	Heimdall (E-3A)
17	242.17	ESR02 - CAS Range Operator
18	34.7	ESR02 - JTAC Odin
19	270.5	Blue
20	270.75	Red

**RAMROD**

0	1	2	3	4	5	6	7	8	9
A	B	D	U	C	T	I	O	N	S

**KTC 1400 C**

	0	1	2	3	4	5	6	7	8	9
A	NFRO	MCL	XWU	GI	JE	BDV	SP	YQ	KT	HA
B	PMVR	GFB	IUK	CE	NQ	YOT	XD	AH	LJ	WS
C	QH DU	SCW	GKP	EI	RN	LXB	FO	TA	VY	MJ
D	JDFV	BSI	EON	XQ	WP	UTM	RG	LK	YH	CA
E	HADL	NRJ	OIB	VT	QP	WGM	YF	SK	UE	CX
F	XKAY	QRW	CDS	FV	JM	EHP	NB	UI	TL	GO
G	CQHK	RGT	BLA	DJ	UY	WV	SN	EI	OM	XP
H	KOEL	VSF	GYI	TR	MB	AND	CU	JH	PW	XQ
I	BGJW	MHU	QLY	TC	RV	DAP	IE	KX	FN	SO
J	KIMN	TQB	OCL	XR	FV	JUG	WP	DA	HE	YS
K	GKBR	SEO	YCI	QF	MV	ADT	LU	PX	HN	JW
L	KOTG	HXI	ULE	RF	VJ	PNS	AD	WM	YC	BQ
M	DUFV	LEN	YKS	IX	HG	CQT	BM	RO	PW	AJ
N	HGRD	JIB	SOL	EP	NM	TFU	VQ	AK	YX	CW
O	AVJE	DKP	HQO	XC	TW	YRM	IB	UF	GL	NS
P	RBFL	WYQ	IPM	HS	VX	TGE	DJ	UO	NK	AC
Q	DFOP	GHK	EYW	BJ	RI	LUX	SN	VT	MA	CQ
R	GICJ	PVL	ART	MW	KE	HFU	DX	SQ	BY	NO
S	FIKH	TQD	EMU	LJ	PX	GAR	NV	YB	WS	CO
T	HAPN	IMT	DRU	YV	SF	JLX	EB	QW	KC	OG
U	KAWM	NCR	JDG	HF	UV	OSQ	BT	YX	IP	EL
V	WNHO	ARU	VFG	MJ	YX	CSL	PT	BE	QD	KI
W	VQSP	MUY	KXJ	WT	CO	NEH	GL	ID	FR	BA
X	HAQI	LDF	JYV	PB	KU	ESX	GT	RM	NO	WC
Y	GVOY	JWK	RLI	FH	PQ	CEX	DS	MU	BN	TA

**NAVAIDS**

Id	Name	Channel	Position	Elevation
BOO	Bodo	45	N67 15.838 E014 20.046	43
BNK	Banak	47	N70 03.937 E024 58.181	17
OYA	Andoya	28	N69 17.175 E016 08.658	19

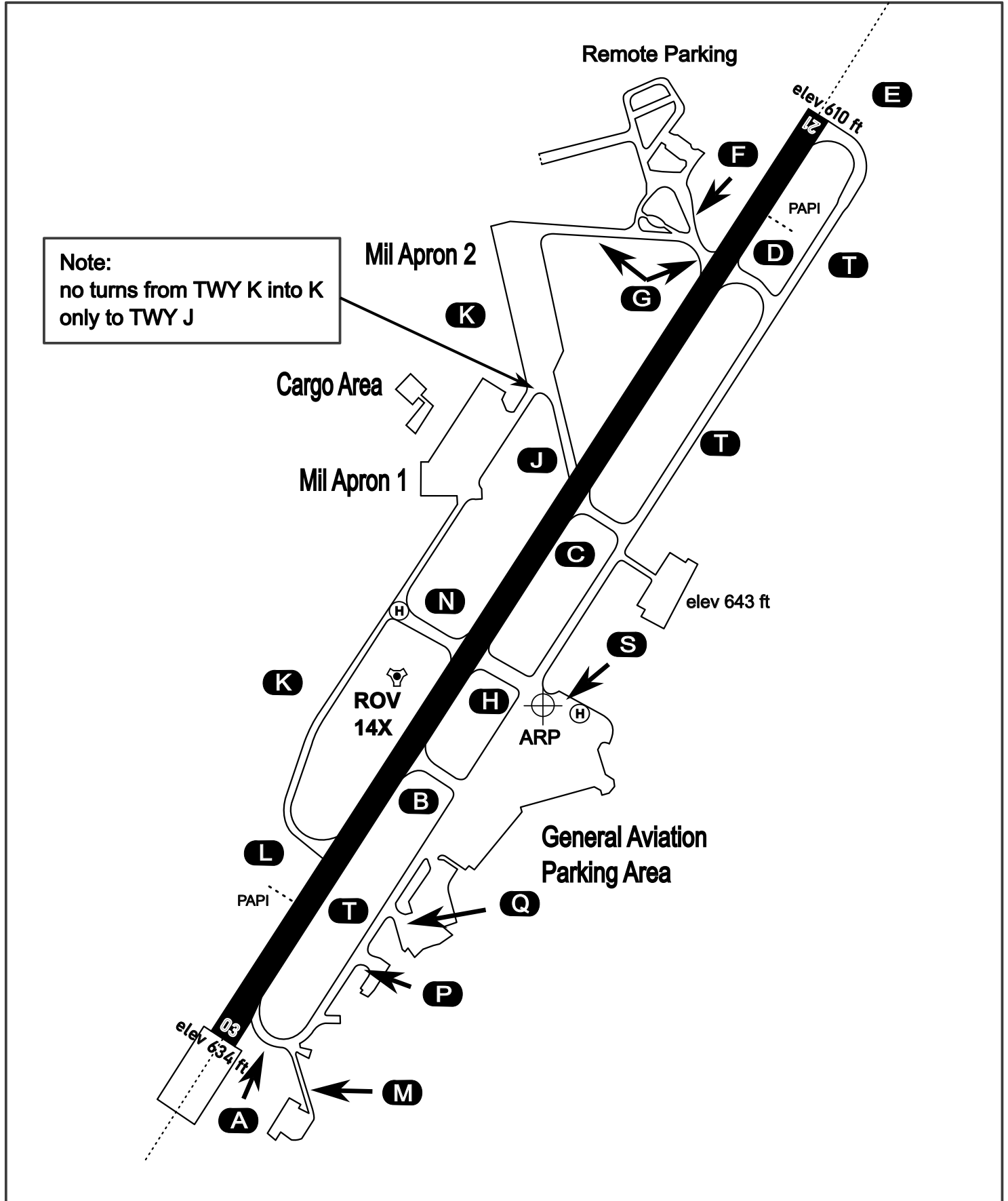
# AERODROME CHART

Rovaniemi Aerodrome

ARP N66° 33' 42" E025° 49' 51"

elev 643 ft

## ROVANIEMI, FINLAND



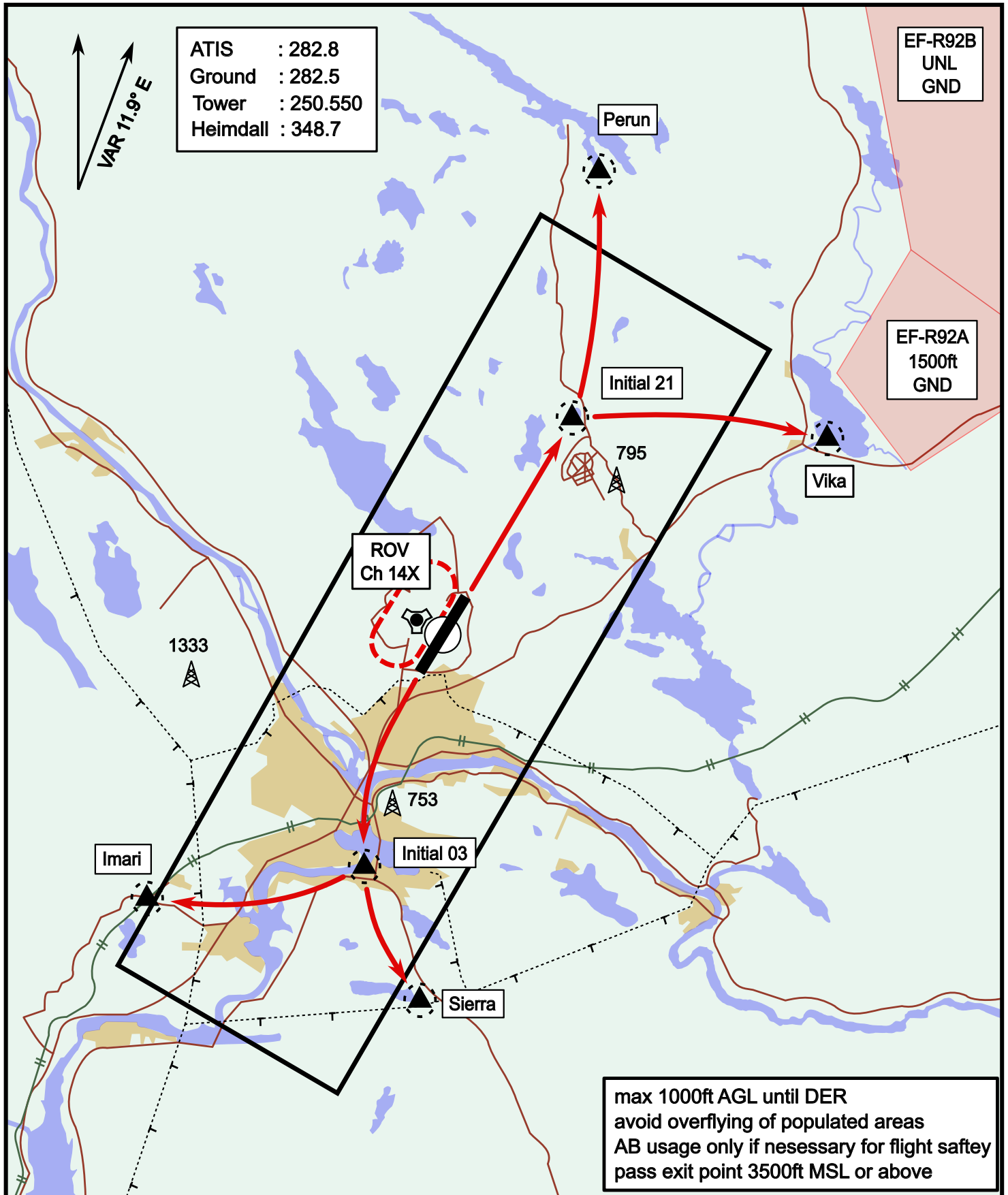
ATIS	Ground	Tower	Radar
282.800	282.500	250.550	348.700



# Visual Departure Jet

elev 643 ft

# Rovaniemi, Finland



Vika	N66° 37.474 / E026° 13.557	Sierra	N66° 25.711 / E025° 46.610
Perun	N66° 44.135 / E026° 01.630	Imari	N66° 28.406 / E025° 31.291
Initial21	N66° 38.421 / E025° 58.682	Initial03	N66° 28.793 / E025° 44.105

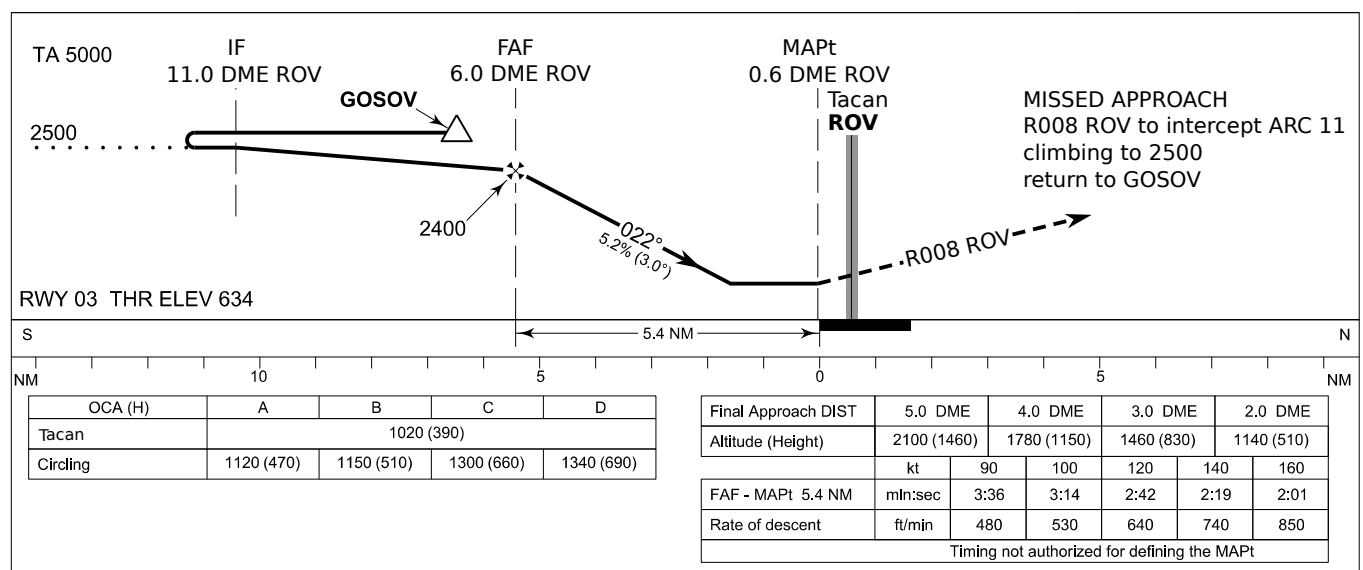
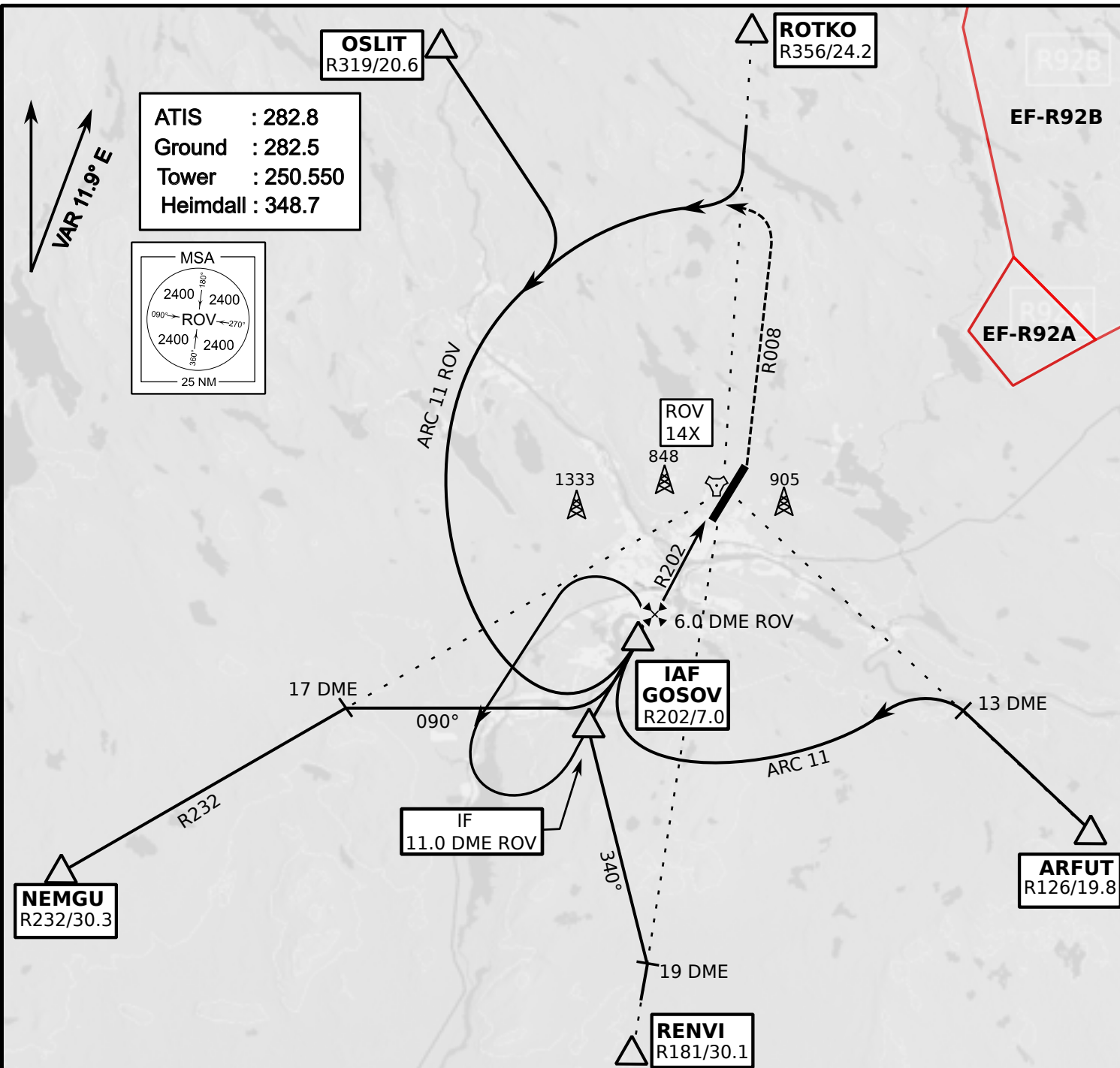
# Visual Approach Jet

elev 643 ft

# Rovaniemi, Finland



Vika	N66° 37.474 / E026° 13.557	Sierra	N66° 25.711 / E025° 46.610
Perun	N66° 44.135 / E026° 01.630	Imari	N66° 28.406 / E025° 31.291
Initial21	N66° 38.421 / E025° 58.682	Initial03	N66° 28.793 / E025° 44.105



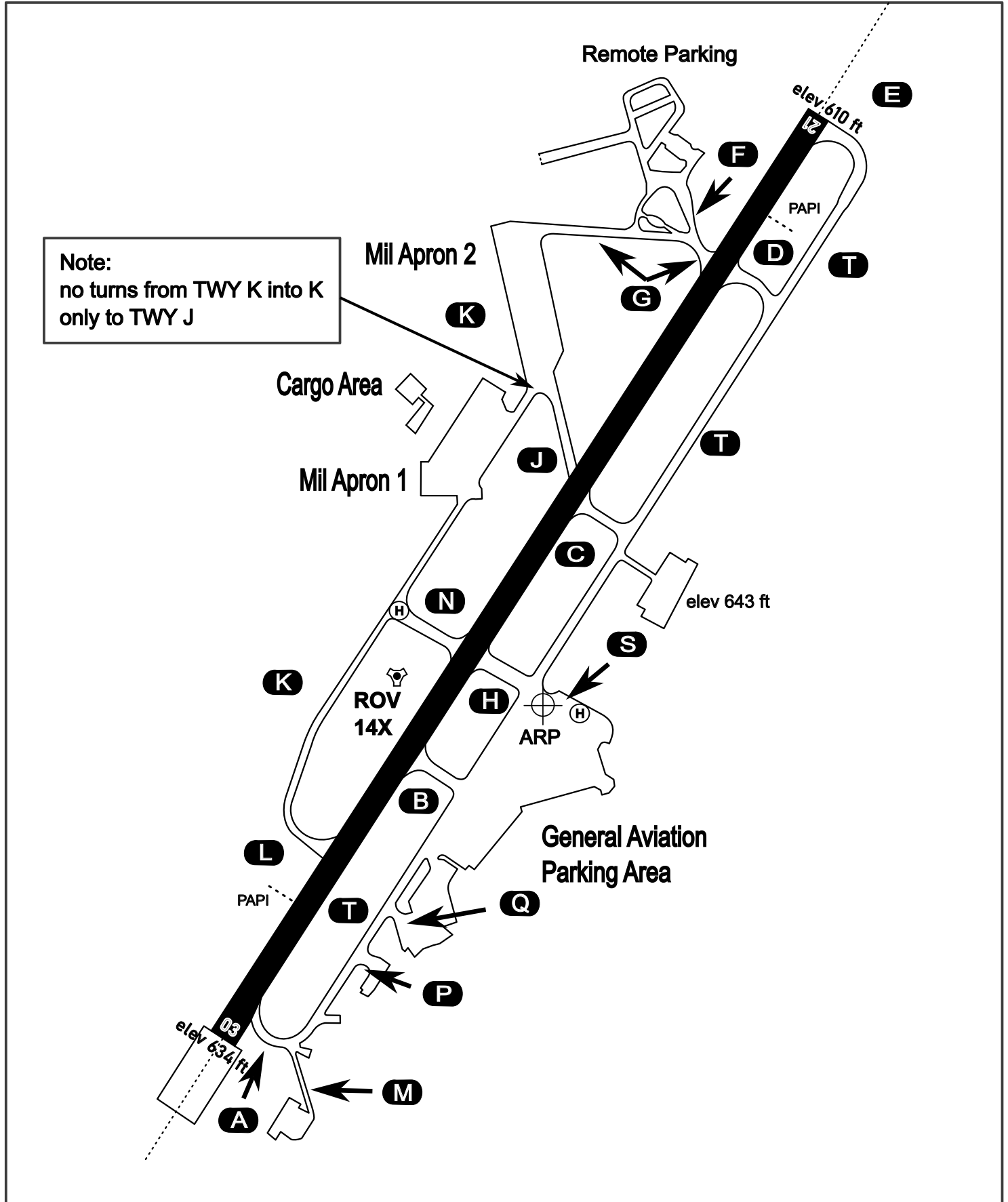
# AERODROME CHART

Rovaniemi Aerodrome

ARP N66° 33' 42" E025° 49' 51"

elev 643 ft

## ROVANIEMI, FINLAND



ATIS	Ground	Tower	Radar
282.800	282.500	250.550	348.700