

MISSION DATA CARD

OPORD		Callsign		Mission		Date/Time		
3482/2024		Edelweiss 2		Training		170000DEC24		
Task	Bomb Pattern					Freq		
AO	ESR01					134.0		
Departure				Recovery				
VFR Departure				VFR Approach				
#	Callsign		Pilot		IFF	TCN	LSR	NET

LOADOUT

A/A	2xA120C, 2xA9X				GUN	100% HEI-T	
A/G	6xM82				CHF	60	
POD	HTS, TGP				FLR	60	
TKS	2xFT300				FUEL	100%	

TOLD

	Takeoff	Target	Joker	Bingo	Land
FUEL	11169				

AIRBASES

	Name	TCN	ATIS	GND	TWR	RWY	Elev	ILS
Dep	Rovaniemi	14X	282.8	282.5	250.55	21	643	111.7
Arr	Rovaniemi	14X	282.8	282.5	250.55	21	643	111.7

FLIGHTPLAN

#	Name	Navaid/Coords/DME	ALT	TOT
1	Initial21	N66 38.642 E025 58.682	2500	
2	PERUN	N66 44.135 E026 01.630	4000	
3	NAFFI	N67 04.630 E023 11.660	25000	
4	SEPJA	N67 27.300 E021 12.080	25000	
5	Entry ESR01	N67 48.885 E021 04.864	20000	
6	Holding	N68 18.578 E021 01.120	20000	
7	IP	N68 18.116 E020 44.682	20000	
8	TGT	N68 22.157 E020 19.534	1000	
9	IMARI	N66 28.406 E025 31.291	3000	
10	Initial03	N66 28.793 E025 44.105	2500	

NOTES

Harddeck 12000ft

SUPPORT**Tanker**

Callsign	TCN	Freq	ALT	TAS
ARCO 1	22Y	319.8		
	Pos			

AWACS

Callsign	Freq	ALT	Pos
HEIMDALL	348.7		

OTHER FLIGHTS

Callsign	Mission	Airframe	Freq	TCN	Grpld	Laser
Edelweiss 2	Training	4x F-16C	264.25	1/64		172X
AO	ESR01	Task	Bomb Pattern			

RADIO CHANNELS

#	Freq	Name
1		Flight/Squadron specific
2	282.8	Rovaniemi ATIS
3	282.5	Rovaniemi Ground
4	250.55	Rovaniemi Tower
5	320.7	Bodo ATIS
6	250.75	Bodo Tower
7	235.45	Kallax ATIS
8	250.3	Kallax Tower
9	265.0	Texaco-1 KC-135 Medium / Slow 71Y
10	319.8	Arco-1 KC-135 High / Fast 22Y
11	360.8	Shell-1 KC-135 MPRS High / Fast 41Y
12	304.0	CVN-71 Rough Rider (RRR) 71X
13	303.0	LHA-1 Tarawa (TWA) 79X
14	247.8	S-3B Mauler-1 (MAU) 64Y
15	347.8	Loki (E-2D)
16	348.7	Heimdall (E-3A)
17	242.17	ESR02 - CAS Range Operator
18	34.7	ESR02 - JTAC Odin
19	270.5	Blue
20	270.75	Red

RAMROD

0	1	2	3	4	5	6	7	8	9
S	T	A	M	P	E	D	I	N	G

KTC 1400 C

	0	1	2	3	4	5	6	7	8	9
A	WNDM	OAC	TUY	RF	GE	PHS	QB	LI	XJ	VK
B	BKXJ	TEY	GHS	IC	QW	RLO	PD	AF	NM	UV
C	WMHX	EJS	KRD	PF	AT	LGU	NI	BC	OV	QY
D	VDWP	YCU	RKG	SM	LT	ABX	NH	QJ	FI	EO
E	NDOX	LYU	AGI	QK	BW	EVF	HM	TC	RP	SJ
F	IFMU	SNP	WJL	CB	OK	EDA	YH	QT	RV	XG
G	LDFY	CKH	OXT	SW	IB	ANG	UV	PQ	JE	MR
H	YHXN	EDJ	LAU	QF	OK	WTG	VC	RB	IP	MS
I	VMCO	UDB	TQK	IN	EL	XSF	RW	JP	YA	GH
J	LGBK	AYO	PIU	NT	VH	FQE	XR	JC	MS	WD
K	KLPN	VAH	UYJ	OF	SM	WEG	XB	CQ	RT	DI
L	RXSN	TFB	HVV	OU	EP	QGK	YJ	AI	CL	MD
M	HPQN	RUC	DMF	KW	IE	GTS	LB	YO	VJ	XA
N	GFDK	YOX	VWA	JR	IQ	PUT	SM	NC	EH	BL
O	DLQY	SRC	UBX	HG	TV	MNJ	KO	FA	WI	EP
P	JFHD	VAG	NIM	PO	ST	QBU	LC	YE	KW	XR
Q	JOHA	FKB	SUT	NR	CL	MGD	YQ	XP	EW	IV
R	GMFN	QUB	XAT	JH	PW	EYL	VS	KR	OD	IC
S	RCND	UPL	SWY	AE	TH	IQO	KF	VG	JB	MX
T	GTCF	HBS	RAV	OJ	NM	EPK	LX	QU	DY	IW
U	VFHL	JYU	WQO	BS	CP	GMT	NI	RD	AE	XK
V	QBRE	FHW	MCN	AS	TU	KVY	JP	DG	OL	IX
W	KLGV	SUT	YFE	WA	MB	NCH	DR	IO	PX	JQ
X	KEAN	WBL	HJV	RM	QU	PIO	TG	CF	DY	SX
Y	RUIT	KJF	LOQ	HD	BE	PXM	AG	VY	SN	WC

NAVAIDS

Id	Name	Channel	Position	Elevation
BOO	Bodo	45	N67 15.838 E014 20.046	43
BNK	Banak	47	N70 03.937 E024 58.181	17
OYA	Andoya	28	N69 17.175 E016 08.658	19

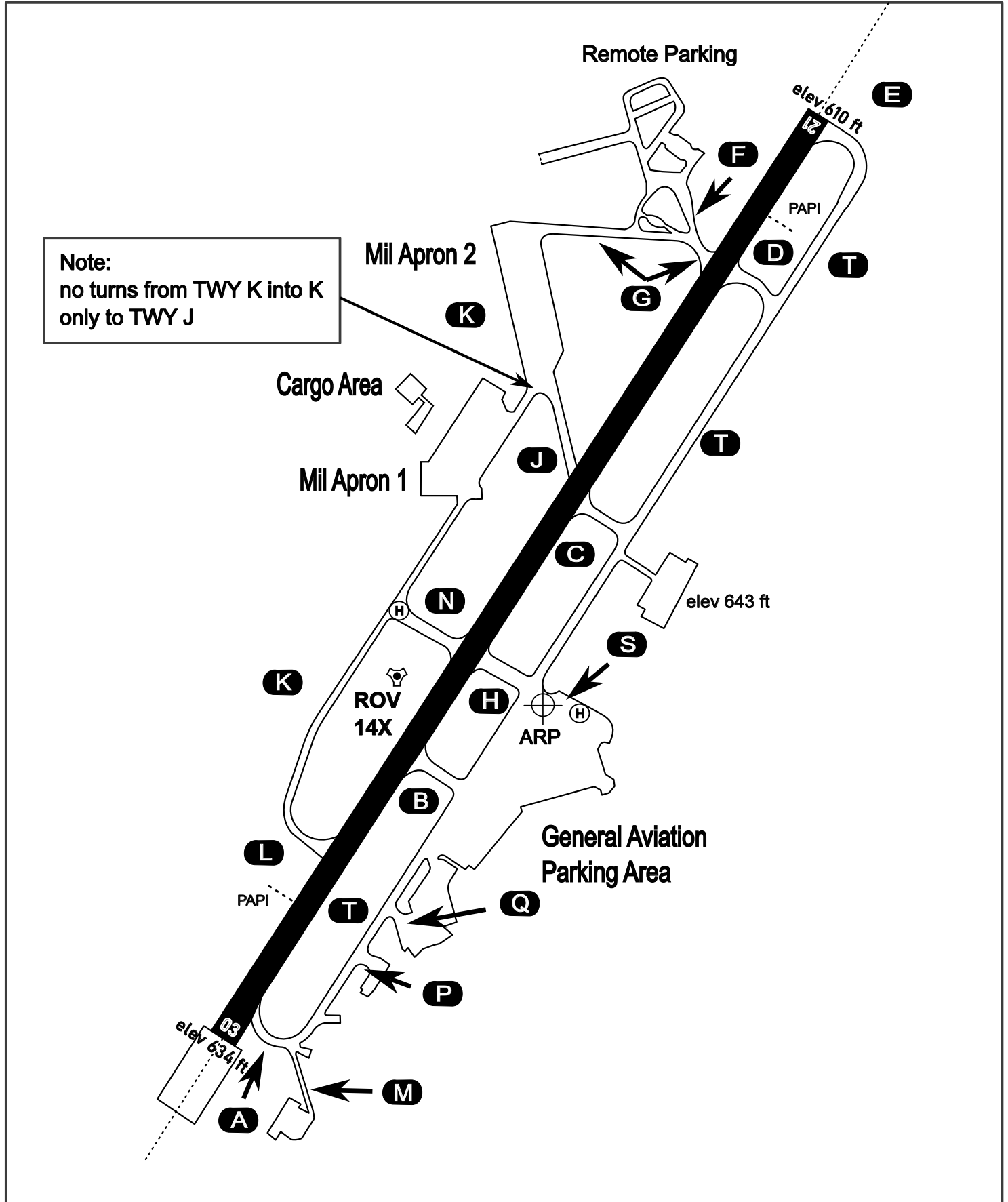
AERODROME CHART

Rovaniemi Aerodrome

ARP N66° 33' 42" E025° 49' 51"

elev 643 ft

ROVANIEMI, FINLAND

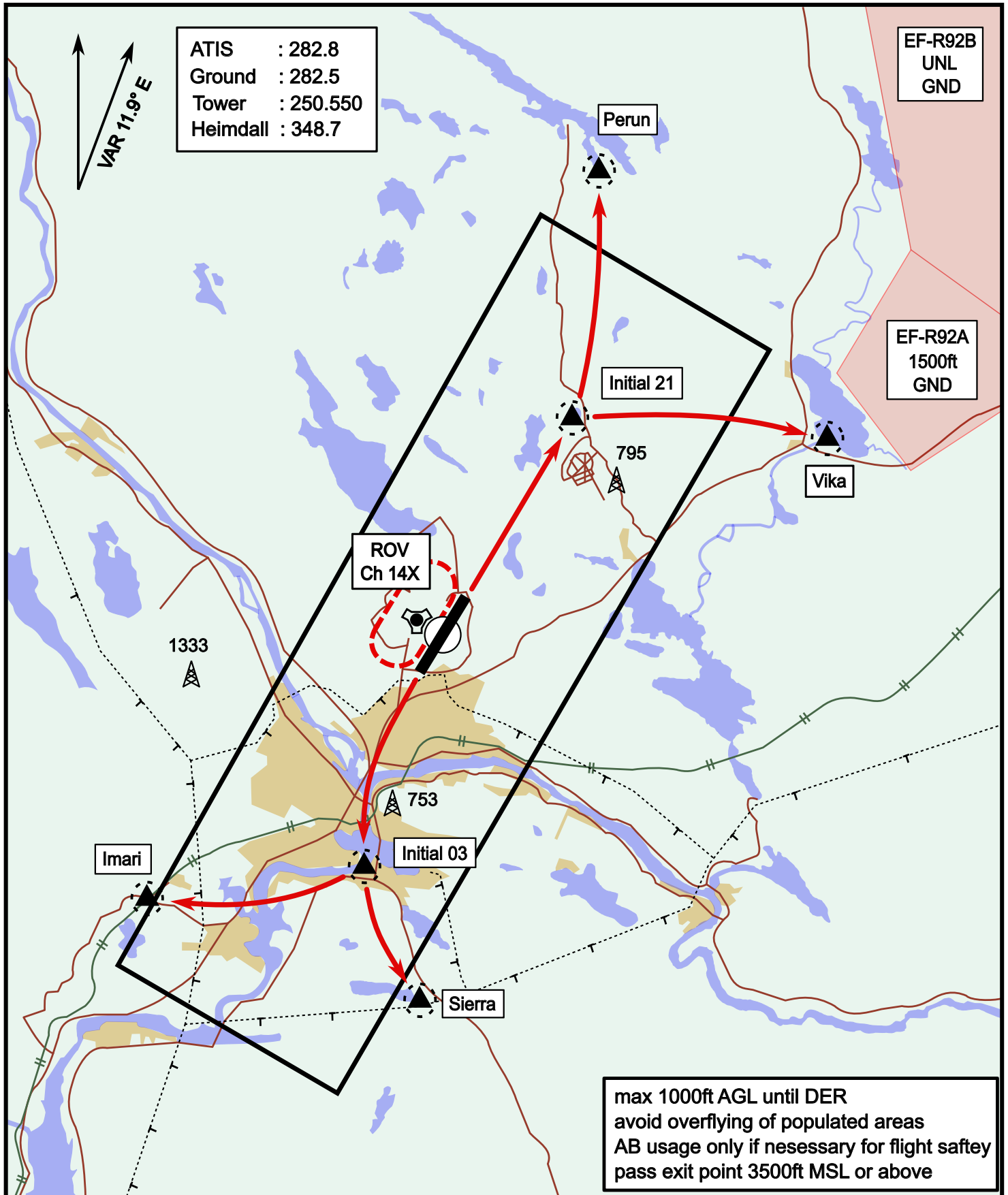


ATIS	Ground	Tower	Radar
282.800	282.500	250.550	348.700

Visual Departure Jet

elev 643 ft

Rovaniemi, Finland

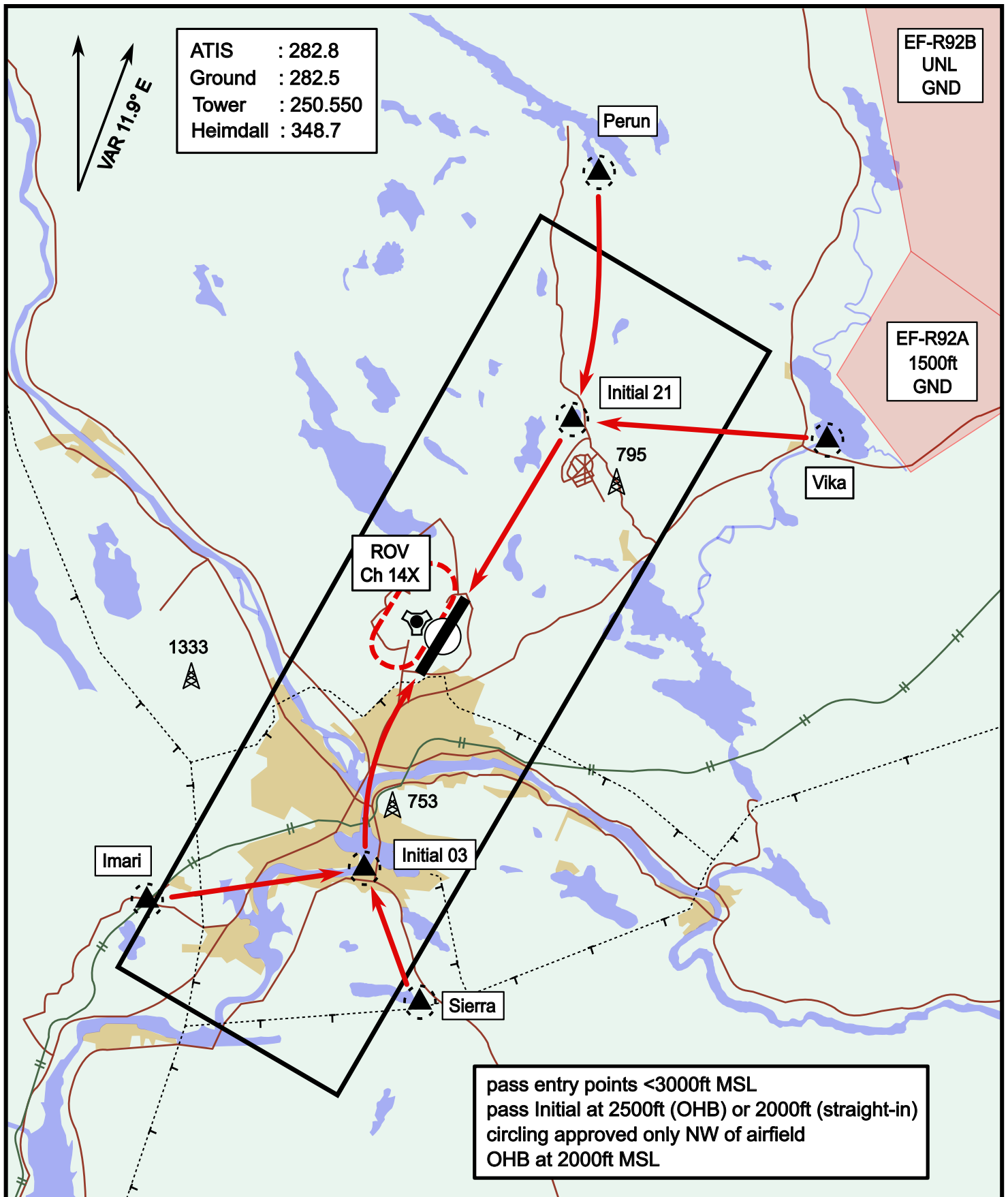


Vika	N66° 37.474 / E026° 13.557	Sierra	N66° 25.711 / E025° 46.610
Perun	N66° 44.135 / E026° 01.630	Imari	N66° 28.406 / E025° 31.291
Initial21	N66° 38.421 / E025° 58.682	Initial03	N66° 28.793 / E025° 44.105

Visual Approach Jet

elev 643 ft

Rovaniemi, Finland



Vika	N66° 37.474 / E026° 13.557	Sierra	N66° 25.711 / E025° 46.610
Perun	N66° 44.135 / E026° 01.630	Imari	N66° 28.406 / E025° 31.291
Initial21	N66° 38.421 / E025° 58.682	Initial03	N66° 28.793 / E025° 44.105