

**MISSION DATA CARD**

OPORD		Callsign		Mission		Date/Time		
3480/2024		Edelweiss 2		Training		162000DEC24		
Task	Bomb Pattern					Freq		
AO	ESR01					264.25		
Departure				Recovery				
VFR Departure				VFR Approach				
#	Callsign		Pilot		IFF	TCN	LSR	NET

**LOADOUT**

A/A	2xA120C, 2xA9X				GUN	100% HEI-T	
A/G	6xM82				CHF	60	
POD	HTS, TGP				FLR	60	
TKS	2xFT300				FUEL	100%	

**TOLD**

	Takeoff	Target	Joker	Bingo	Land
FUEL	11169				

**AIRBASES**

	Name	TCN	ATIS	GND	TWR	RWY	Elev	ILS
Dep	Rovaniemi	14X	282.8	282.5	250.55	21	643	111.7
Arr	Rovaniemi	14X	282.8	282.5	250.55	21	643	111.7

**FLIGHTPLAN**

#	Name	Navaid/Coords/DME	ALT	TOT
1	Initial21	N66 38.642 E025 58.682	2500	
2	PERUN	N66 44.135 E026 01.630	4000	
3	NAFFI	N67 04.630 E023 11.660	25000	
4	SEPJA	N67 27.300 E021 12.080	25000	
5	Entry ESR01	N67 48.885 E021 04.864	20000	
6	Holding	N68 18.578 E021 01.120	20000	
7	IP	N68 18.116 E020 44.682	20000	
8	TGT	N68 22.157 E020 19.534	1000	
9	IMARI	N66 28.406 E025 31.291	3000	
10	Initial03	N66 28.793 E025 44.105	2500	

## NOTES

Harddeck 12000ft

**SUPPORT****Tanker**

Callsign	TCN	Freq	ALT	TAS
ARCO 1	22Y	319.8		
	Pos			

**AWACS**

Callsign	Freq	ALT	Pos
HEIMDALL	348.7		

**OTHER FLIGHTS**

Callsign	Mission	Airframe	Freq	TCN	Grpld	Laser
Edelweiss 2	Training	4x F-16C	134.0	1/64		172X
AO	ESR01	Task	Bomb Pattern			

## RADIO CHANNELS

#	Freq	Name
1		Flight/Squadron specific
2	282.8	Rovaniemi ATIS
3	282.5	Rovaniemi Ground
4	250.55	Rovaniemi Tower
5	320.7	Bodo ATIS
6	250.75	Bodo Tower
7	235.45	Kallax ATIS
8	250.3	Kallax Tower
9	265.0	Texaco-1   KC-135   Medium / Slow   71Y
10	319.8	Arco-1   KC-135   High / Fast   22Y
11	360.8	Shell-1   KC-135 MPRS   High / Fast   41Y
12	304.0	CVN-71 Rough Rider (RRR)   71X
13	303.0	LHA-1 Tarawa (TWA)   79X
14	247.8	S-3B Mauler-1 (MAU)  64Y
15	347.8	Loki (E-2D)
16	348.7	Heimdall (E-3A)
17	242.17	ESR02 - CAS Range Operator
18	34.7	ESR02 - JTAC Odin
19	270.5	Blue
20	270.75	Red

**RAMROD**

0	1	2	3	4	5	6	7	8	9
S	M	O	T	H	E	R	I	N	G

**KTC 1400 C**

	0	1	2	3	4	5	6	7	8	9
A	TAIG	HNP	LXE	CJ	VD	MYR	BU	KW	OQ	FS
B	DLGP	HBV	IQA	KR	XO	SMN	VF	WC	UE	JT
C	QVDK	SJY	XTW	IL	BN	CFP	OM	ER	HA	UG
D	OITP	BDX	YNQ	FC	HS	LAE	JG	WV	UR	MK
E	BFLM	PSC	YDA	RG	JV	UNW	HO	KE	IQ	TX
F	SGRL	WFV	XNC	BQ	UI	JHK	PE	MT	DY	AO
G	FDIX	HMJ	BUN	KE	QY	PAL	VG	RW	ST	OC
H	LBQI	VYX	EHF	RW	JD	PKG	CN	AU	MO	ST
I	SXMT	ENB	UAC	IG	KY	VFR	LJ	PQ	HO	WD
J	SCYO	RVX	JEK	WI	AB	DPG	MQ	TN	FH	UL
K	MCKN	RIU	HFJ	OP	SD	BYQ	LW	AX	ET	GV
L	VLFP	RXM	ECH	AU	IJ	TWK	BS	YD	QN	GO
M	OPNI	VTF	MLR	CX	UG	SAB	ED	HJ	YK	QW
N	CUFY	HOM	GBT	WN	KL	AVE	JP	XS	QI	DR
O	JOFS	MEL	IBP	AX	HV	UGQ	YK	TR	CW	ND
P	YUOF	PWN	MXT	CI	SA	BEK	LH	DJ	QV	GR
Q	YEAM	HUW	TVK	LO	SB	QXD	IJ	RN	CG	FP
R	EMPF	RJA	OWI	TK	CX	SBN	HU	DV	LY	QG
S	BPVQ	DEA	MIL	XY	HG	OUF	JT	NW	SC	RK
T	FCNB	GMI	PUY	QW	JR	KAD	VL	HX	SE	TO
U	ASRW	TYM	QFX	CD	PU	BVH	JN	IL	KE	GO
V	PKQN	EGH	BIM	XF	WL	SYR	UV	DJ	CT	AO
W	HWUC	JBL	DQN	PK	TG	FSV	MI	EA	RY	OX
X	JPEF	KSH	NWG	RO	QA	MYI	CT	VU	DL	BX
Y	GPDV	MEK	TAN	XQ	IS	YBW	UR	OC	HL	JF

**NAVAIDS**

Id	Name	Channel	Position	Elevation
BOO	Bodo	45	N67 15.838 E014 20.046	43
BNK	Banak	47	N70 03.937 E024 58.181	17
OYA	Andoya	28	N69 17.175 E016 08.658	19



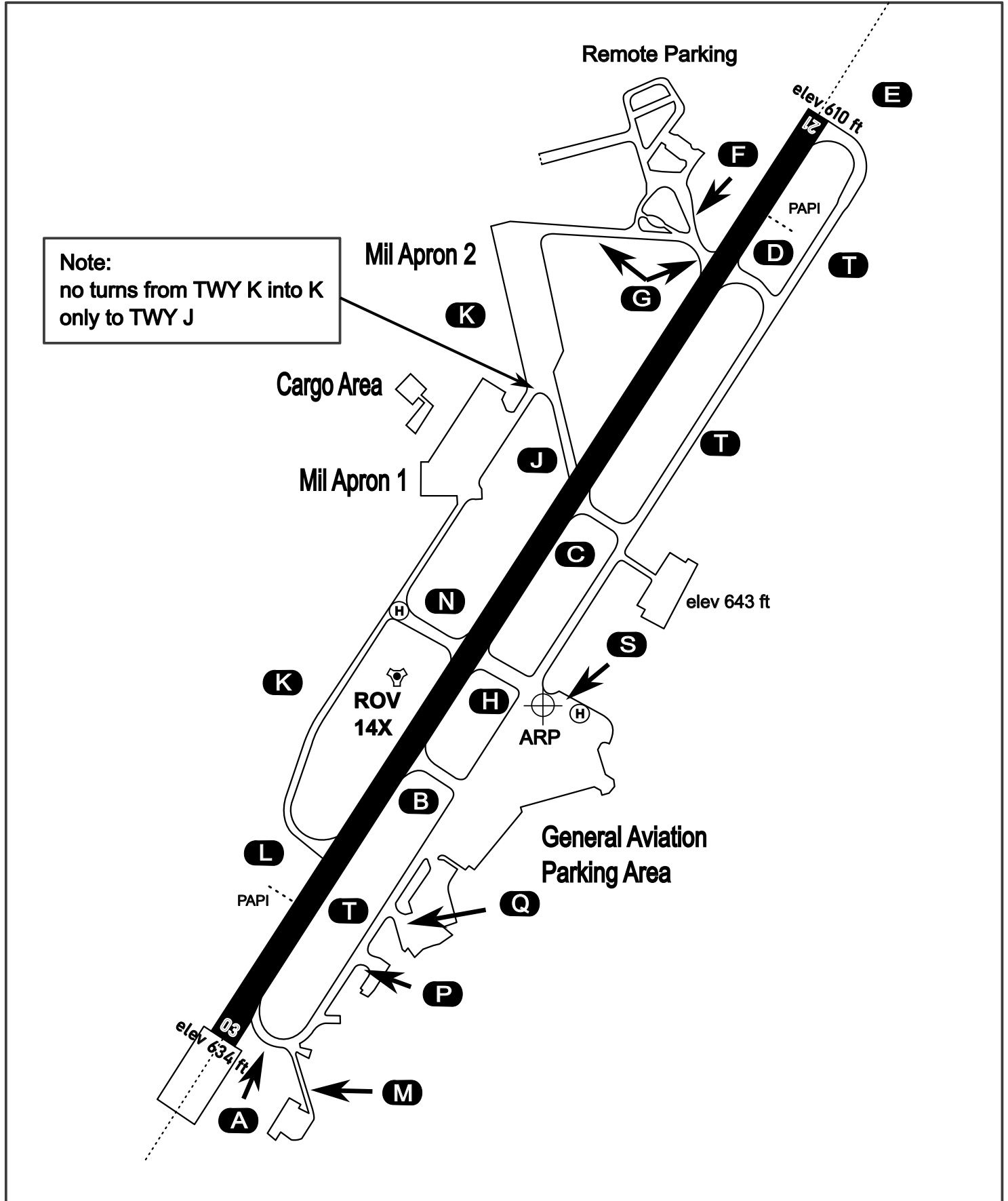
# AERODROME CHART

Rovaniemi Aerodrome

ARP N66° 33' 42" E025° 49' 51"

elev 643 ft

## ROVANIEMI, FINLAND

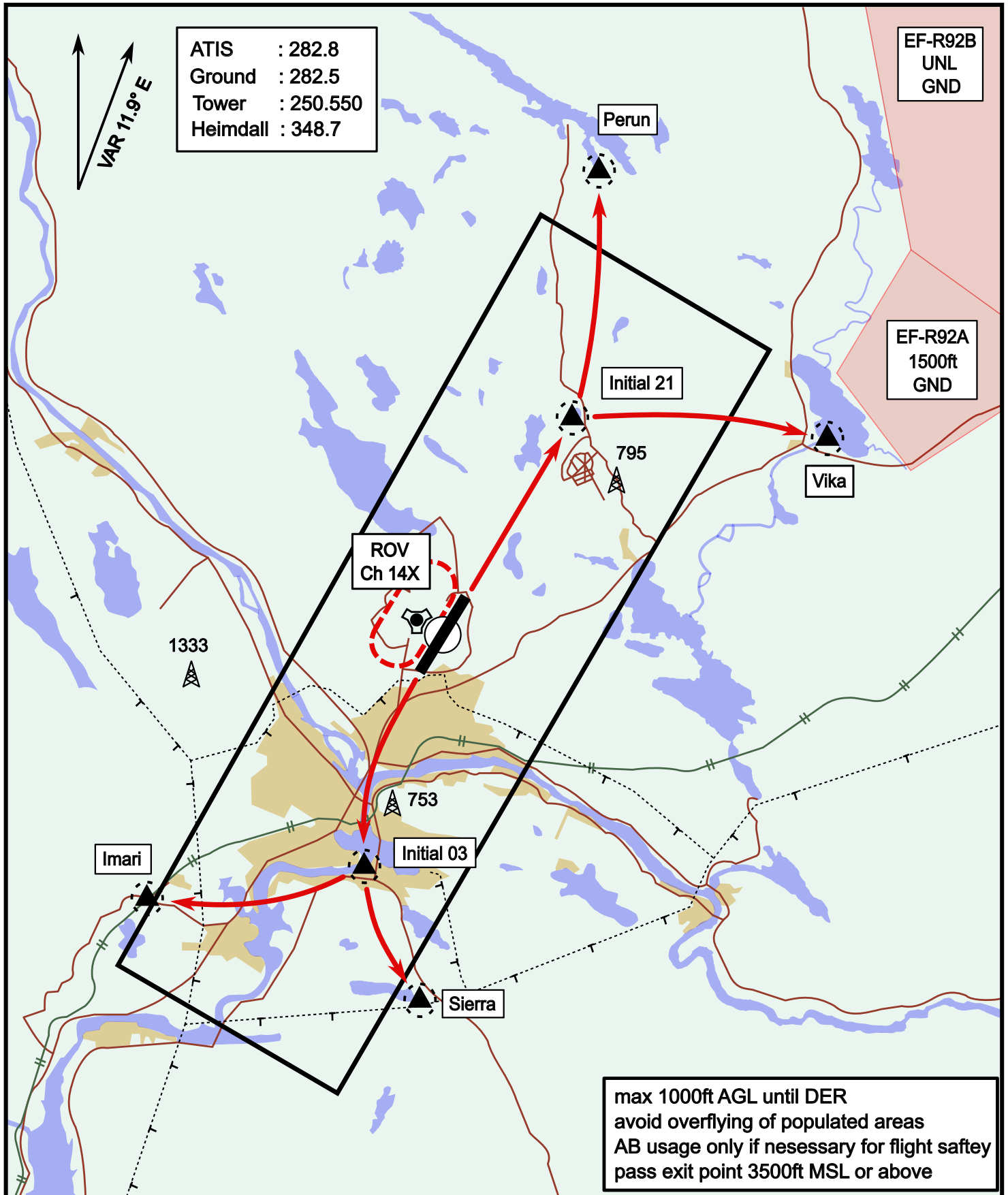


ATIS	Ground	Tower	Radar
282.800	282.500	250.550	348.700

# Visual Departure Jet

elev 643 ft

# Rovaniemi, Finland

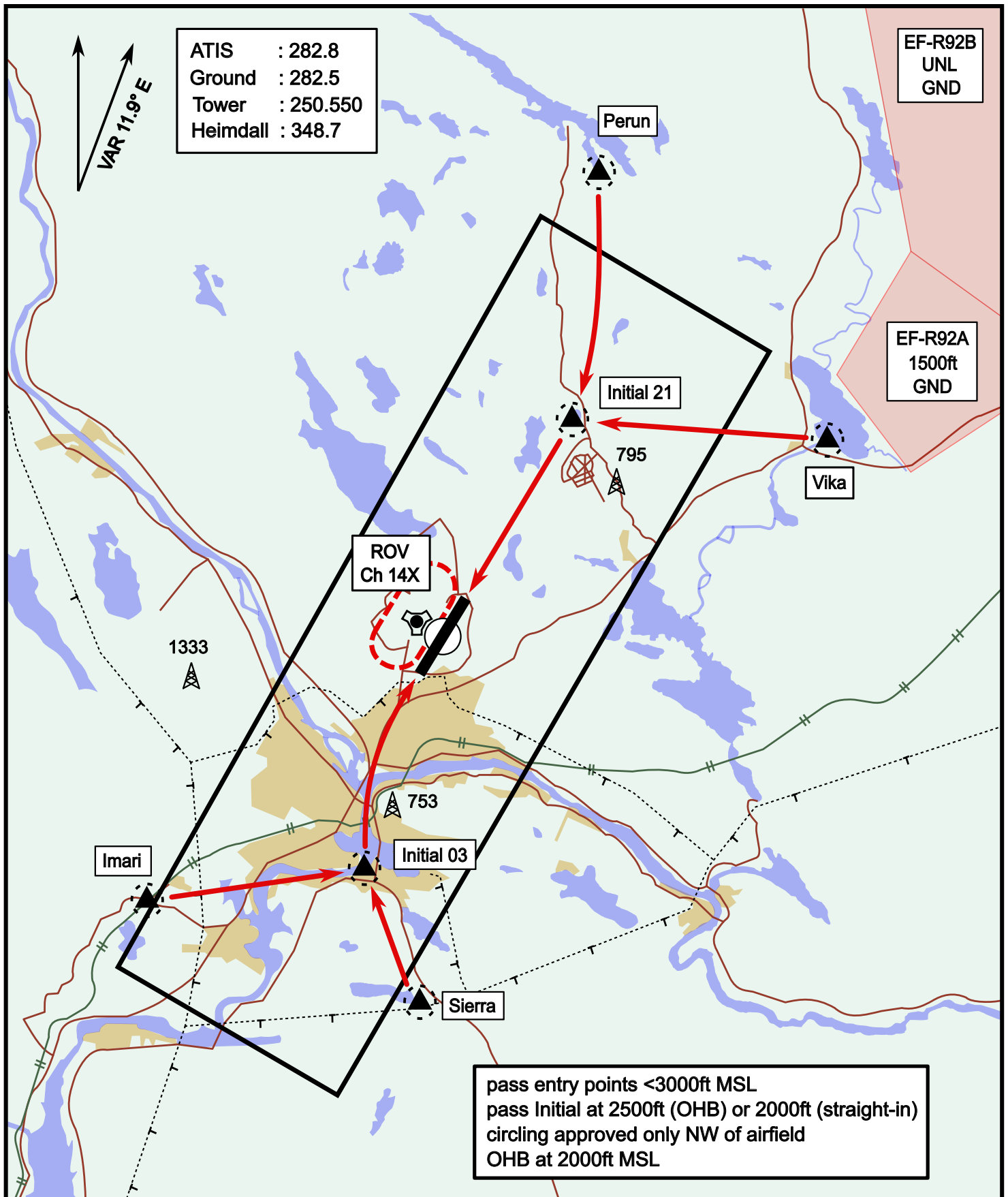


Vika	N66° 37.474 / E026° 13.557	Sierra	N66° 25.711 / E025° 46.610
Perun	N66° 44.135 / E026° 01.630	Imari	N66° 28.406 / E025° 31.291
Initial21	N66° 38.421 / E025° 58.682	Initial03	N66° 28.793 / E025° 44.105

# Visual Approach Jet

elev 643 ft

# Rovaniemi, Finland



Vika	N66° 37.474 / E026° 13.557	Sierra	N66° 25.711 / E025° 46.610
Perun	N66° 44.135 / E026° 01.630	Imari	N66° 28.406 / E025° 31.291
Initial21	N66° 38.421 / E025° 58.682	Initial03	N66° 28.793 / E025° 44.105