

MISSION DATA CARD

OPORD		Callsign		Mission		Date/Time		
3471/2024		Vanguard 4		Training		092000DEC24		
Task	BVR X					Freq		
AO	BVR X					261.15		
Departure				Recovery				
FYTTR THREE				STRYK				
#	Callsign		Pilot		IFF	TCN	LSR	NET
-1	Vanguard 4-1		Ghost		1031	1Y	1551	01/01
-2	Vanguard 4-2		Hudson		1032	64Y	1552	01/02

LOADOUT

A/A	2xA9X, 4xA120C				GUN	100% SAPHEI
A/G					CHF	80
POD					FLR	40
TKS	3xFPU-8A				FUEL	100%

TOLD

	Takeoff	Target	Joker	Bingo	Land
FUEL	17535			3000	2000

AIRBASES

	Name	TCN	ATIS	GND	TWR	RWY	Elev	ILS
Dep	Nellis AFB	12X	270.1	275.8	327.0	21L	1850	109.1
Arr	Nellis AFB	12X	270.1	275.8	327.0	21L	1850	109.1

FLIGHTPLAN

#	Name	Navaid/Coords/DME	ALT	TOT
1	FYTTR	LSV 269/33 (N36 21.440 W115 41.470)	14000	
2	CAPS-IN	N35 00 10.340 W115 32 48.247	15000	
3	CAPS-OUT	N35 W115 53 48.540	15000	
4	CAPN-IN	N35 20 17.405 W115 32 35.817	15000	
5	CAPN-OUT	N35 20 03.701 W115 57 14.138	15000	

COMMS

Radio	Usage
1	3,4,16,4,3
2	261.15
3	MIDS A 22

NOTES

Close-Range Training. Hard Deck Minimum 3,000'.

SUPPORT**Tanker**

Callsign	TCN	Freq	ALT	TAS
TEXACO 2	95Y	289.7	FL220	420
	Pos	Pegasus.1: CDC 166/102 (N3730 W11440)		
ARCO 1	113Y	319.8	FL250	450
	Pos	AR-625: MVA 168/77 (N3717 W11802)		
SHELL 2	115Y	360.8	FL250	430
	Pos	AR-635: MLF 260/127 (N3831 W11542)		
TEXACO 1	94Y	265.0	17000	290
	Pos	AR-641A: CDC 242/78 (N3728 W11439)		
TEXACO 3	22Y	300.05	15000	280
	Pos	AR-231V: BTY 126/37 (N3620 W11614)		

AWACS

Callsign	Freq	ALT	Pos
MAGIC	377.8	FL270	N3749 W11417 - N3713 W11446

FAC

Callsign	Freq	Elev	Pos
HILL			N3639.81 W11546.88

OTHER FLIGHTS

Callsign	Mission	Airframe	Freq	TCN	Grpld	Laser
Monster 4	Training	3x A-10C	132.15	1/64	24	141X
AO	Range 64	Task	CBU			
T-Rex 4	Training	3x A-10C	132.25	1/64	25	141X
AO	Range 64	Task	CBU			
Edelweiss 1	Training	4x F-16C	134.5	1/64		171X
AO	EAST NTTR	Task	AAR			
Tiger 3	Training	4x F/A-18C	261.15	1/64		155X
AO	BVR X	Task	BVR X			
Raptor 1	Training	4x F-16C	134.0	1/64		162X
AO	EAST NTTR	Task	AAR			
Edelweiss 1	Training	2x F/A-18C	264.15	12/75	1	171X
AO		Task	IFR-Training, AAR			

RADIO CHANNELS

#	Freq	Name
1		Flight/Squadron specific
2	289.4	Nellis Clearance Delivery
3	275.8	Nellis Ground
4	327.0	Nellis Tower
5	385.4	Nellis Approach/Departure West
6	273.55	Nellis Approach/Departure East
7	317.525	Nellis Control -- Sally
8	254.4	Nellis Control-- Lee
9	305.6	SOF Bullseye
10	343.725	EMERGENCY SINGLE FRQ
11	270.1	Nellis ATIS
12	360.625	Creech AFB Tower
13	250.1	HAVE QUICK 13
14	251.1	HAVE QUICK 14
15	252.1	HAVE QUICK 15
16	377.8	Blackjack
17	265.0	KC-135 AR-641A
18	360.8	KC-135MPRS AR-635
19	319.8	KC-135MPRS AR-625
20	300.05	KC-135 AR-231V

RAMROD

0	1	2	3	4	5	6	7	8	9
S	Y	M	P	A	T	H	I	Z	E

KTC 1400 C

	0	1	2	3	4	5	6	7	8	9
A	ASRY	WNM	BUI	TL	VP	QOF	DK	EC	GX	JH
B	UPHV	CRA	LNE	DI	YM	QTF	OW	KJ	BS	XG
C	RPCM	KND	ILF	QW	OB	HJY	VX	AU	ST	GE
D	TVAU	FYK	GOB	NR	IH	DSJ	LP	MQ	EC	WX
E	TYRB	ILF	QMJ	PD	SK	VXH	UE	NO	GW	CA
F	ULSO	GEB	NPA	MT	YJ	DXI	FR	CV	HW	KQ
G	RLJV	XPH	EMI	BF	QC	KAG	OU	YW	TN	SD
H	VSBR	OEA	MLX	NW	GF	QPY	KI	UH	JC	DT
I	YVTR	AUD	MLW	BG	SO	JNF	EI	KC	XP	HQ
J	BGXN	YEA	LHO	MU	TF	PQV	CJ	DK	SI	WR
K	ORXK	ADH	WTP	YV	LF	CMG	SJ	EN	BU	IQ
L	IYWA	XME	ROU	SP	HB	KGN	DT	FQ	CJ	VL
M	DPQT	IMF	UKC	SJ	RB	OLH	XW	AE	NG	VY
N	SUBD	GOV	ERI	KJ	CW	FXN	PY	LM	AT	QH
O	RCEX	UAD	HGY	KB	QN	FOP	VT	WL	SJ	IM
P	DYHN	AOV	WPG	MK	EF	SCB	UJ	RT	LI	QX
Q	QMNU	BWF	KXA	DJ	GH	YSP	CT	OE	VL	RI
R	MJDC	BIR	LSK	AW	QN	TOP	UG	YV	HX	FE
S	DOAT	IUP	ESF	VW	QR	BLN	JH	XG	KM	CY
T	QPRW	BGN	LMS	EA	DJ	TYX	KI	CU	VH	FO
U	BGNM	XLS	WUY	KQ	JT	RCV	PE	FO	AH	ID
V	EOAG	RJK	SNI	QM	VH	BCP	LW	XU	FY	DT
W	BCJR	KFE	MYN	IV	PT	QDG	LX	SA	HW	UO
X	QXRF	DOU	WIC	YH	GA	ETS	ML	JB	PK	NV
Y	CJDP	UMN	OIW	BX	YR	TKA	SV	LQ	GF	HE

NAVAIDS

Id	Name	Channel	Position	Elevation
BCE	Bryce Canyon	75	N3741.35 W11218.23	9040
BIH	Bishop	33	N3722.62 W11821.99	4114
BLD	Boulder	114	N3559.75 W11451.82	3650
BTY	Beatty	94	N3648.54 W11644.86	2925
CDC	Cedar City	120	N3747.24 W11304.90	5463
DAG	Daggett	79	N3457.75 W11634.69	1760
EED	Needles	99	N3445.96 W11428.43	650
GFS	Goffs	91	N3507.87 W11510.59	4019
GRL	Groom Lake	18	N3713.91 W11548.16	4475
HEC	Hector	74	N3447.83 W11627.78	1854
ILC	Wilson Creek	110	N3815.02 W11423.65	9318
INS	Creech AFB	87	N3635.20 W11540.12	3101
LAS	McCarran Intl	116	N3604.78 W11509.59	2142
LSV	Nellis	12	N3614.68 W11501.50	1864
MLF	Milford	58	N3821.62 W11300.79	4977
MMM	Mormon Mesa	90	N3646.16 W11416.65	2120
MVA	Mina	98	N3833.92 W11801.97	7860
OAL	Coale Dale	124	N3800.20 W11746.23	4800
PGS	Peach Springs	57	N3537.48 W11332.67	4754
TPH	Tonopah Muni	119	N3801.84 W11702.01	5330
TQQ	Silverbow	77	N3748.00 W11647.00	5500
UTI	St George	23	N3705.29 W11335.53	2871



RWY 3L-21R
 PCN 46 R/C/W/T
 RWY 3R-21L
 PCN 51 R/C/W/T
 2017

PAR	RWY	CAT	MINIMA		ARP	ELEV	Scale 1:35'500	
	21L	A B D E	2057 - 0.8 200	(200-0.8/1.6) GS 3°	36° 14.060° N 115° 01.058° W	1857 [ft] 566 [m]	0	300
	3R	A B D E	2057 - 0.8 200	(200-0.8/1.6) GS 3°			600	900
	21R	A C D E	2257 - 1.2 350	(350-1.2/1.6)			1200	1500 [m]
	3L	A C D E	2257 - 1.2 350	(350-1.2/1.6)			0	1000
							2000	3000
							4000	5000 [ft]

RWY	TORA	TODA	ASDA	LDA	PSN	THR	ALS
21L	10051 [ft] 3063 [m]	11051 [ft] 3368 [m]	11051 [ft] 3368 [m]	10051 [ft] 3063 [m]	36°14.043' N	115°01.018' W	⊕
3R	10120 [ft] 3084 [m]	11120 [ft] 3398 [m]	11120 [ft] 3398 [m]	10120 [ft] 3084 [m]	36°13.029' N	115°02.038' W	

ATIS	NELLIS GROUND	NELLIS TOWER	NELLIS CONTROL	TACAN	ILS RWY 21L	NELLIS EAST	NELLIS WEST
270.100 MHz	275.800 121.800	327.000 132.55	317.525	LSV 12X	109.10 Mhz	384.400	385.000

FYTTR THREE DEPARTURE IFR CHART | VALID 2014 LAS VEGAS, NEVADA

ATIS
270.100
NELLIS GROUND
275.800
NELLIS TOWER
327.000
NELLIS CONTROL
317.525
NELLIS DEP/APP EAST
384.400
BLACKJACK
377.800



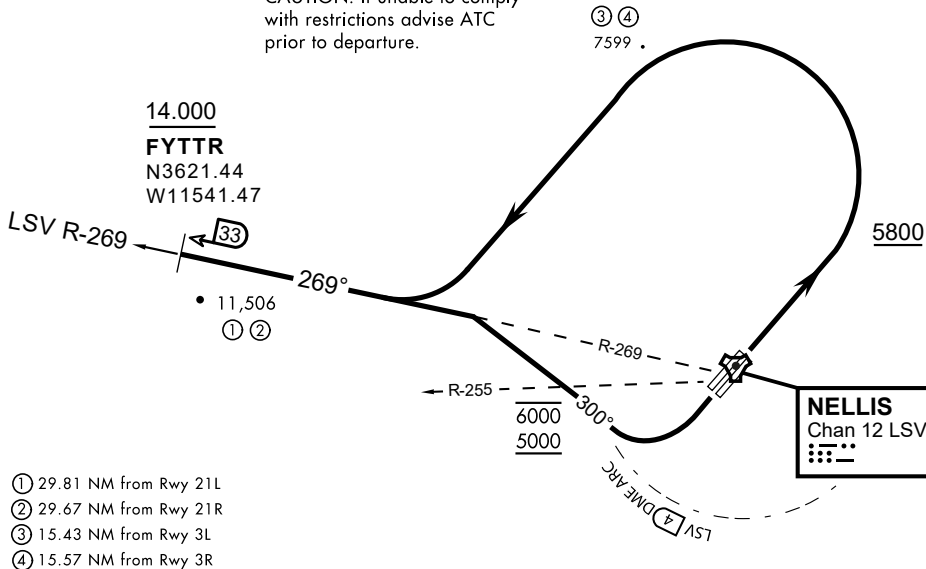
Rwy	Knots	60	120	180	240	300	360
3L (a)	V/V(fpm)	394	788	1182	1576	1970	2364
3R (a)	V/V(fpm)	392	784	1176	1568	1960	2352
21L (b)	V/V(fpm)	388	776	1164	1552	1940	2328
21R (b)	V/V(fpm)	390	780	1170	1560	1950	2340

Minimum Climb Rate

(a) to 9300

(b) to 13 500

CAUTION: If unable to comply with restrictions advise ATC prior to departure.



- ① 29.81 NM from Rwy 21L
- ② 29.67 NM from Rwy 21R
- ③ 15.43 NM from Rwy 3L
- ④ 15.57 NM from Rwy 3R

DEPARTURE ROUTE DESCRIPTION

TAKEOFF RWY 3L/R

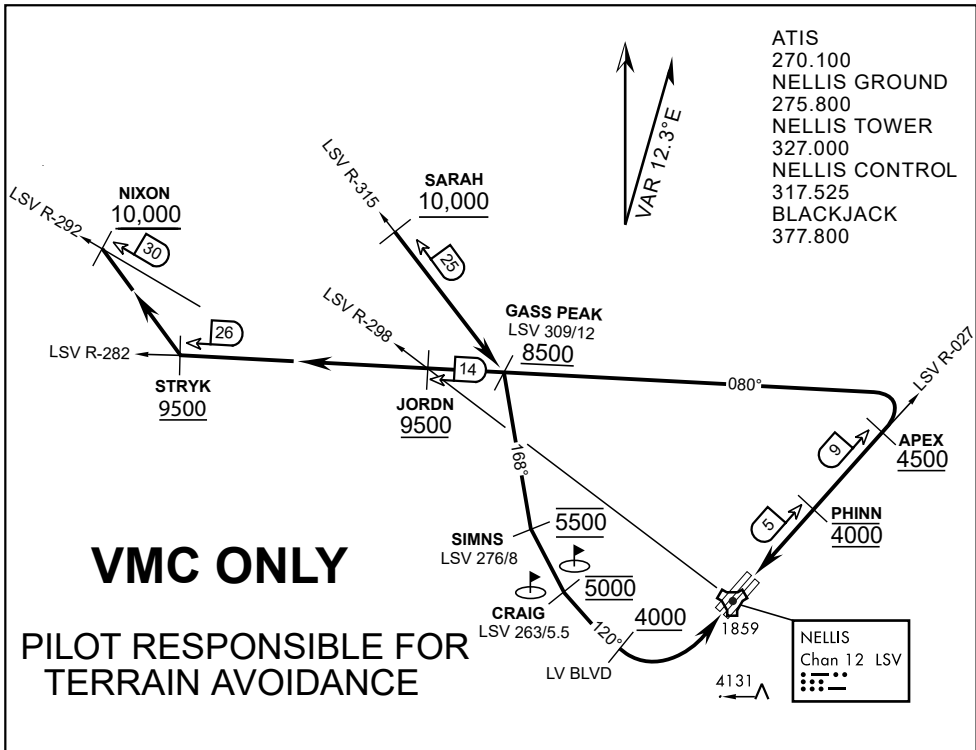
- Fly runway heading until reaching 5,800'.
- Then climbing left turn to intercept LSV TACAN R-269 outbound.
- Cross FYTTR at or above 14,000' or as assigned, then via assigned route.

TAKEOFF RWY 21L/21R

- Turn right to intercept LSV TACAN R-269 outbound.
- Remain within LSV 4 DME until joining LSV R-269
- Cross R-255 between 5,000' and 6,000'.
- Cross FYTTR at or above 14,000' or as assigned, then via assigned route.

NOISE ABATEMENT PROCEDURES:

Fly according Nellis Noise Abatement instructions as published



ATIS
270.100
NELLIS GROUND
275.800
NELLIS TOWER
327.000
NELLIS CONTROL
317.525
BLACKJACK
377.800

VMC ONLY

**PILOT RESPONSIBLE FOR
TERRAIN AVOIDANCE**

APPROACH ROUTE DESCRIPTION

APPROACH RWY 3L/R

Cross STRYK at or above 9,500' MSL, proceed direct GASS PEAK. Cross JORDN at or above 9,500' MSL, cross GASS PEAK at or above 8,500' MSL. Proceed direct SIMNS and cross at 5,500' MSL. Cross Las Vegas Blvd at or above 4,000' MSL then to 3,500' MSL for Initial. Remain within 4 DME if LSV on turn to final.

VFR STRAIGHT-IN RWY 3L/R

Depart CRAIG & descend to be at 3,000' MSL by Las Vegas Blvd. Do not descend below 3,000' MSL until within 5 DME of LSV or 4 NM of the runway on turn to final.

APPROACH RWY 21L/R

Cross STRYK at or above 9,500' MSL, proceed direct GASS PEAK. Cross JORDN at or above 9,500' MSL, cross GASS PEAK at or above 8,500' MSL. Cross APEX at or above 4,500' MSL then direct 5NM initial. Descend to cross PHINN at 4,000' MSL, Inside 5 NM descend to 3,500' MSL.

VFR STRAIGHT-IN RWY 21L/R

Cross APEX at 4,000' MSL. Descend to be at 3,000' MSL at PHINN. Descend to 3,000' MSL at LSV 027/5.

RANGE 63B EXIT

SOUTH: Via NIXON at or above 10,000' MSL, then direct STRYK.

EAST: Via SARAH at or above 10,000' MSL, then direct GASS PEAK.