

**MISSION DATA CARD**

OPORD		Callsign		Mission		Date/Time	
3470/2024		Edelweiss 1		Training		092000DEC24	
Task	IFR-Training, AAR					Freq	
AO						264.15	
Departure				Recovery			
DREAM FOUR				HI-TACAN Y RWY 21L			
#	Callsign	Pilot	IFF	TCN	LSR	NET	
-1	Edelweiss 1-1	Cloud	1711	12X	1711	01/01	
-2	Edelweiss 1-2	Coach	1712	75X	1712	01/02	
-2	Edelweiss 1-2	Coach	1712	75X	1712	01/02	

**LOADOUT**

A/A	2xA9X			GUN	100% HEI-T		
A/G				CHF	120		
POD				FLR	0		
TKS	FPU-8A			FUEL	100%		

**TOLD**

	Takeoff	Target	Joker	Bingo	Land		
FUEL	13047		4000	2500			

**AIRBASES**

	Name	TCN	ATIS	GND	TWR	RWY	Elev	ILS
Dep	Nellis AFB	12X	270.1	275.8	327.0	21L	1850	109.1
Arr	Nellis AFB	12X	270.1	275.8	327.0	21L	1850	109.1
Div	Creech AFB	87X	290.45	275.8	360.6			

COMMS	
Radio	Usage
1	327.000

**SUPPORT****Tanker**

Callsign	TCN	Freq	ALT	TAS
ARCO 1	113Y	319.8	FL250	450
Pos	AR-625: MVA 168/77 (N3717 W11802)			

**OTHER FLIGHTS**

Callsign	Mission	Airframe	Freq	TCN	Grpld	Laser
Monster 4	Training	3x A-10C	132.15	1/64	24	141X
AO	Range 64	Task	CBU			
T-Rex 4	Training	3x A-10C	132.25	1/64	25	141X
AO	Range 64	Task	CBU			
Edelweiss 1	Training	4x F-16C	134.5	1/64		171X
AO	EAST NTTR	Task	AAR			
Tiger 3	Training	4x F/A-18C	261.15	1/64		155X
AO	BVR X	Task	BVR X			
Raptor 1	Training	4x F-16C	134.0	1/64		162X
AO	EAST NTTR	Task	AAR			
Vanguard 4	Training	2x F/A-18C	261.15	1/64	1	155X
AO	BVR X	Task	BVR X			

**RADIO CHANNELS**

#	Freq	Name
1		Flight/Squadron specific
2	289.4	Nellis Clearance Delivery
3	275.8	Nellis Ground
4	327.0	Nellis Tower
5	385.4	Nellis Approach/Departure West
6	273.55	Nellis Approach/Departure East
7	317.525	Nellis Control -- Sally
8	254.4	Nellis Control-- Lee
9	305.6	SOF Bullseye
10	343.725	EMERGENCY SINGLE FRQ
11	270.1	Nellis ATIS
12	360.625	Creech AFB Tower
13	250.1	HAVE QUICK 13
14	251.1	HAVE QUICK 14
15	252.1	HAVE QUICK 15
16	377.8	Blackjack
17	265.0	KC-135 AR-641A
18	360.8	KC-135MPRS AR-635
19	319.8	KC-135MPRS AR-625
20	300.05	KC-135 AR-231V

**RAMROD**

0	1	2	3	4	5	6	7	8	9
S	Y	M	P	A	T	H	I	Z	E

**KTC 1400 C**

	0	1	2	3	4	5	6	7	8	9
A	ASRY	WNM	BUI	TL	VP	QOF	DK	EC	GX	JH
B	UPHV	CRA	LINE	DI	YM	QTF	OW	KJ	BS	XG
C	RPCM	KND	ILF	QW	OB	HJY	VX	AU	ST	GE
D	TVAU	FYK	GOB	NR	IH	DSJ	LP	MQ	EC	WX
E	TYRB	ILF	QMJ	PD	SK	VXH	UE	NO	GW	CA
F	ULSO	GEB	NPA	MT	YJ	DXI	FR	CV	HW	KQ
G	RLJV	XPH	EMI	BF	QC	KAG	OU	YW	TN	SD
H	VSBR	OEA	MLX	NW	GF	QPY	KI	UH	JC	DT
I	YVTR	AUD	MLW	BG	SO	JNF	EI	KC	XP	HQ
J	BGXN	YEA	LHO	MU	TF	PQV	CJ	DK	SI	WR
K	ORXK	ADH	WTP	YV	LF	CMG	SJ	EN	BU	IQ
L	IYWA	XME	ROU	SP	HB	KGN	DT	FQ	CJ	VL
M	DPQT	IMF	UKC	SJ	RB	OLH	XW	AE	NG	VY
N	SUBD	GOV	ERI	KJ	CW	FXN	PY	LM	AT	QH
O	RCEX	UAD	HGY	KB	QN	FOP	VT	WL	SJ	IM
P	DYHN	AOV	WPG	MK	EF	SCB	UJ	RT	LI	QX
Q	QMNU	BWF	KXA	DJ	GH	YSP	CT	OE	VL	RI
R	MJDC	BIR	LSK	AW	QN	TOP	UG	YV	HX	FE
S	DOAT	IUP	ESF	VW	QR	BLN	JH	XG	KM	CY
T	QPRW	BGN	LMS	EA	DJ	TYX	KI	CU	VH	FO
U	BGNM	XLS	WUY	KQ	JT	RCV	PE	FO	AH	ID
V	EOAG	RJK	SNI	QM	VH	BCP	LW	XU	FY	DT
W	BCJR	KFE	MYN	IV	PT	QDG	LX	SA	HW	UO
X	QXRF	DOU	WIC	YH	GA	ETS	ML	JB	PK	NV
Y	CJDP	UMN	OIW	BX	YR	TKA	SV	LQ	GF	HE

**NAVAIDS**

<b>Id</b>	<b>Name</b>	<b>Channel</b>	<b>Position</b>	<b>Elevation</b>
BCE	Bryce Canyon	75	N3741.35 W11218.23	9040
BIH	Bishop	33	N3722.62 W11821.99	4114
BLD	Boulder	114	N3559.75 W11451.82	3650
BTY	Beatty	94	N3648.54 W11644.86	2925
CDC	Cedar City	120	N3747.24 W11304.90	5463
DAG	Daggett	79	N3457.75 W11634.69	1760
EED	Needles	99	N3445.96 W11428.43	650
GFS	Goffs	91	N3507.87 W11510.59	4019
GRL	Groom Lake	18	N3713.91 W11548.16	4475
HEC	Hector	74	N3447.83 W11627.78	1854
ILC	Wilson Creek	110	N3815.02 W11423.65	9318
INS	Creech AFB	87	N3635.20 W11540.12	3101
LAS	McCarran Intl	116	N3604.78 W11509.59	2142
LSV	Nellis	12	N3614.68 W11501.50	1864
MLF	Milford	58	N3821.62 W11300.79	4977
MMM	Mormon Mesa	90	N3646.16 W11416.65	2120
MVA	Mina	98	N3833.92 W11801.97	7860
OAL	Coale Dale	124	N3800.20 W11746.23	4800
PGS	Peach Springs	57	N3537.48 W11332.67	4754
TPH	Tonopah Muni	119	N3801.84 W11702.01	5330
TQQ	Silverbow	77	N3748.00 W11647.00	5500
UTI	St George	23	N3705.29 W11335.53	2871



RWY 3L-21R  
 PCN 46 R/C/W/T  
 RWY 3R-21L  
 PCN 51 R/C/W/T  
 2017

PAR	RWY	CAT	MINIMA		ARP	ELEV	Scale 1:35'500	
	21L	A B D E	2057 - 0.8 200	(200-0.8/1.6) GS 3°	36° 14.060° N 115° 01.058° W	1857 [ft] 566 [m]	0 300 600 900 1200 1500 [m]	
	3R	A B D E	2057 - 0.8 200	(200-0.8/1.6) GS 3°			0 1000 2000 3000 4000 5000 [ft]	
SRA	21R	A C D E	2257 - 1.2 350	(350-1.2/1.6)				
	3L	A C D E	2257 - 1.2 350	(350-1.2/1.6)				

RWY	TORA	TODA	ASDA	LDA	PSN	THR	ALS
21L	10051 [ft] 3063 [m]	11051 [ft] 3368 [m]	11051 [ft] 3368 [m]	10051 [ft] 3063 [m]	36°14.043' N	115°01.018' W	⊕
3R	10120 [ft] 3084 [m]	11120 [ft] 3398 [m]	11120 [ft] 3398 [m]	10120 [ft] 3084 [m]	36°13.029' N	115°02.038' W	

ATIS	NELLIS GROUND	NELLIS TOWER	NELLIS CONTROL	TACAN	ILS RWY 21L	NELLIS EAST	NELLIS WEST
270.100 MHz	275.800   121.800	327.000   132.55	317.525	LSV 12X	109.10 Mhz	384.400	385.000



# DREAM FOUR DEPARTURE DREAM4 | VALID 2014

**NELLIS AFB (KLSV)**

LAS VEGAS, NEVADA

ATIS  
270.100  
NELLIS GROUND  
275.800  
NELLIS TOWER  
327.000  
NELLIS CONTROL  
317.525  
NELLIS DEP/APP EAST  
384.400  
BLACKJACK  
377.800

## DREAM

N3710.34  
W11459.53

**MINTT**  
LAS 351/38  
17,000

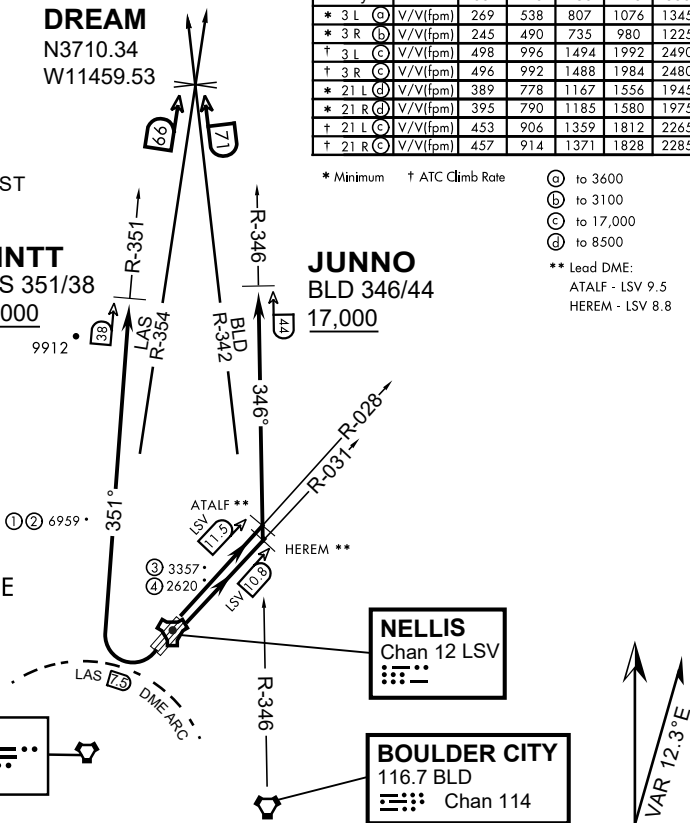
**JUNNO**  
BLD 346/44  
17,000

Rwy	Knots	60	120	180	240	300	360
* 3 L (A)	V/V(fpm)	269	538	807	1076	1345	1614
* 3 R (B)	V/V(fpm)	245	490	735	980	1225	1470
† 3 L (C)	V/V(fpm)	498	996	1494	1992	2490	2988
† 3 R (C)	V/V(fpm)	496	992	1488	1984	2480	2976
* 21 L (D)	V/V(fpm)	389	778	1167	1556	1945	2334
* 21 R (D)	V/V(fpm)	395	790	1185	1580	1975	2370
† 21 L (C)	V/V(fpm)	453	906	1359	1812	2265	2718
† 21 R (C)	V/V(fpm)	457	914	1371	1828	2285	2742

\* Minimum † ATC Climb Rate

- (A) to 3600
  - (B) to 3100
  - (C) to 17,000
  - (D) to 8500
- \*\* Lead DME:  
ATALF - LSV 9.5  
HEREM - LSV 8.8

- ① 12.24 NM from Rwy 21R
- ② 12.40 NM from Rwy 21L
- ③ 5.67 NM from Rwy 3L
- ④ 5.85 NM from Rwy 3R



### NOT FOR CIVIL USE

CAUTION: If unable to comply with restrictions advise ATC prior to departure.

## DEPARTURE ROUTE DESCRIPTION

### TAKE-OFF RWY 3L

- Fly runway heading to intercept the LSV TACAN R-028 then direct ATALF, intercept the BLD VORTAC R-346 then direct JUNNO, cross JUNNO at or above 17,000, then via assigned route.

### TAKE-OFF RWY 3R

- Fly runway heading to intercept the LSV TACAN R-031 then direct HEREM, intercept the BLD VORTAC R-346 then direct JUNNO, cross JUNNO at or above 17,000, then via assigned route.

### TAKE-OFF RWY 21L/R

- Turn right to intercept LAS VORTAC R-351 outbound. Remain North of LAS 7.5 DME turning Northbound. Intercept LAS R-351 between 5000 and 6000, do not proceed West of LAS R-351. Cross MINTT at or above 17,000, then via assigned route.

NOISE ABATMENT PROCEDURES: Fly acc. Nellis Noise Abatement instructions

## DREAM FOUR DEPARTURE (DREAM4 • DREAM)

# HI-TACAN Y RWY 21L

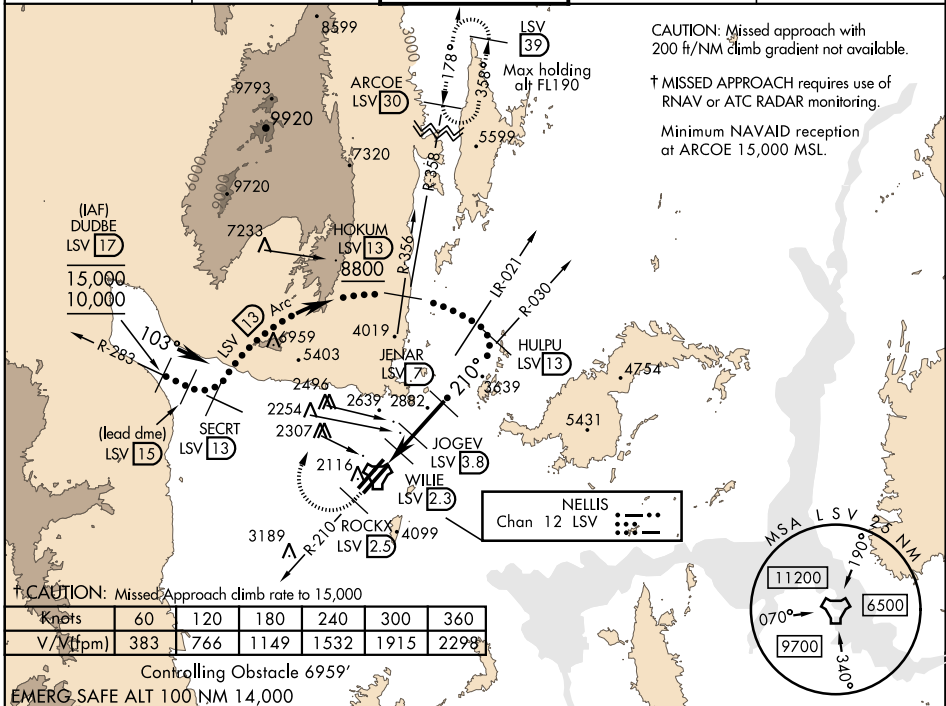
TACAN LSV Chan 12	APCH CRS 210°	Rwy ldg 21L 10,051 TDZE 1865 Arprt Elev 1869	Rwy ldg 21R 10,120 TDZE 1869
-------------------	---------------	-------------------------------------------------	------------------------------

JAL-227 [USAF] NELLIS AFB (KLSV)

\* When ALS inop, increase CAT CDE vis to 1 3/4 miles.  
 \*\* Circling not authorized E of Rwy 3R-21L.

† MISSED APPROACH: Climb to 15,000, intercept LSV TACAN R-210 to 2.5 DME (ROCKX), then climbing right turn heading 020° to join LSV R-358 to ARCOE and hold, continue climb in hold to 15,000. Missed approach not for civil use.

ATIS 270.1	NELLIS APP CON 124.95 273.55	NELLIS TOWER 132.55 327.0	GND CON 121.8 275.8	CLNC DEL 120.9 289.4
------------	------------------------------	---------------------------	---------------------	----------------------



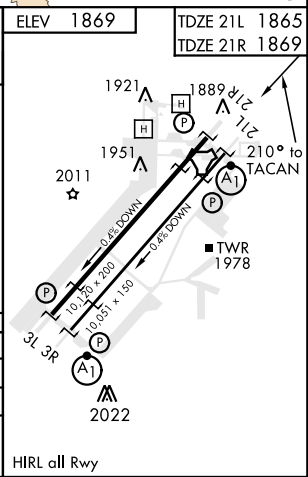
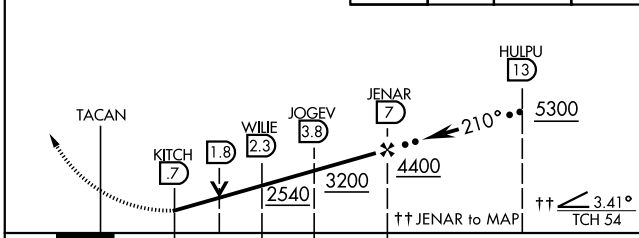
† CAUTION: Missed Approach climb rate to 15,000

Knots	60	120	180	240	300	360
V/Vt (fpm)	383	766	1149	1532	1915	2298

Controlling Obstacle 6959'  
EMERG. SAFE ALT 100 NM 14,000

VGSI and descent angles not coincident (VGSI angle 3.00/TCH 54).

15,000 LSV R-210	ROCKX LSV 2.5	hdg 020°	ARCOE R-358 30	ELEV 1869	TDZE 21L 1865	TDZE 21R 1869
------------------	---------------	----------	----------------	-----------	---------------	---------------



CATEGORY	C	D	E
S-21L *	2460-1 1/4	595 (600-1 1/4)	
SIDESTEP 21R	2460-1	591 (600-1)	
CIRCLING **	2620-2 1/4 751 (800-2 1/4)	2840-3 971 (1000-3)	3040-3 1171 (1200-3)

# HI-TACAN Y RWY 21L

SW-4, 05 DEC 2019 to 02 JAN 2020

SW-4, 05 DEC 2019 to 02 JAN 2020



INDIAN SPRINGS, NEVADA

TACAN INS Chan 87	APCH CRS 065°	Rwy ldg TDZE 3133	9002 3113
		Arpt Elev 3113	

INDIAN SPRINGS AF AUX (KINS)

▼ \* MISSED APPROACH: Straight ahead to INS TACAN, intercept INS R-outbound, cross 17 DME at or above 9500, then direkt KSV TACAN 114

NELLIS CON

CREECH AFB TOWER  
118.30 60.60

GND CON

NOT FOR CIVIL USE

FOR USE UNDER BASIC VFR  
WEATHER MINIMUMS ONLY

PILOT IS RESPONSIBLE FOR TERRAIN/OBSTACLE AVOIDANCE AND APPROPRIATE VFR CLOUD CLEARANCE FOR ALL

CAUTION: Descent gradients are greater than allowed under standard TERPS criteria and inbound course does not meet straight-in criteria

CAUTION: Final approach course crosses Runway centerline at MIDFIELD. Maneuvering left of course required prior to landing. Do not Maneuver farther north than the INS R- 258

Modified by viaBog 66 for use with DCS  
NOT FOR REAL LIFE NAVIGATION

Modified by viaBog 66 for use with DCS  
NOT FOR REAL LIFE NAVIGATION



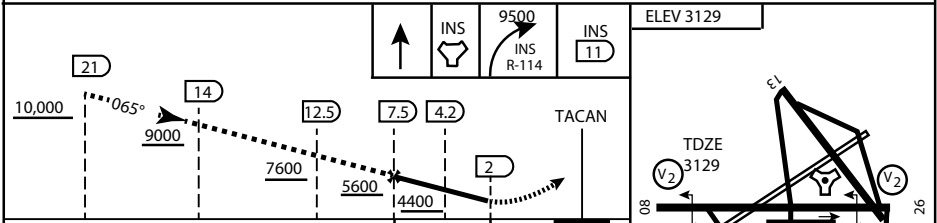
\* CAUTION: Missed Approach Climb Rate to 4,700

Knots	60	120	180	240	300
V/V (fpm)	230	460	690	920	1150

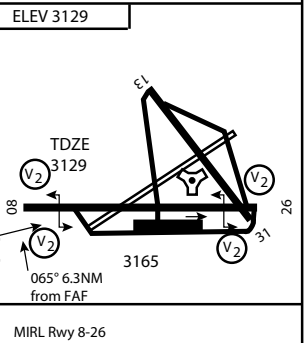
Controlling Obstacle

HIGH ALTITUDE FACILITIES

EMERG SAFE ALT 100 NM 14,000



CATEGORY	A	B	C	D	E
S-8	3760-1 ½	627 (700-1 ½)	3760-1¾ 627 (700-1¾)	3760-2 627 (700-2)	3760-2¼ 627 (700-2¼)
CIRCLING	NOT AUTHORIZED				



CITY OF INDIAN, NEVADA

INDIAN SPRINGS AF AUX (KINS)

(FOR DAY VFR USE ONLY)

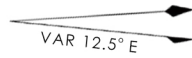


# AIRPORT DIAGRAM

ATIS  
 122.5  
 CREECH TOWER  
 118.4 360.7 38.65  
 GND CON  
 118.3 275.8  
 CLNC DEL

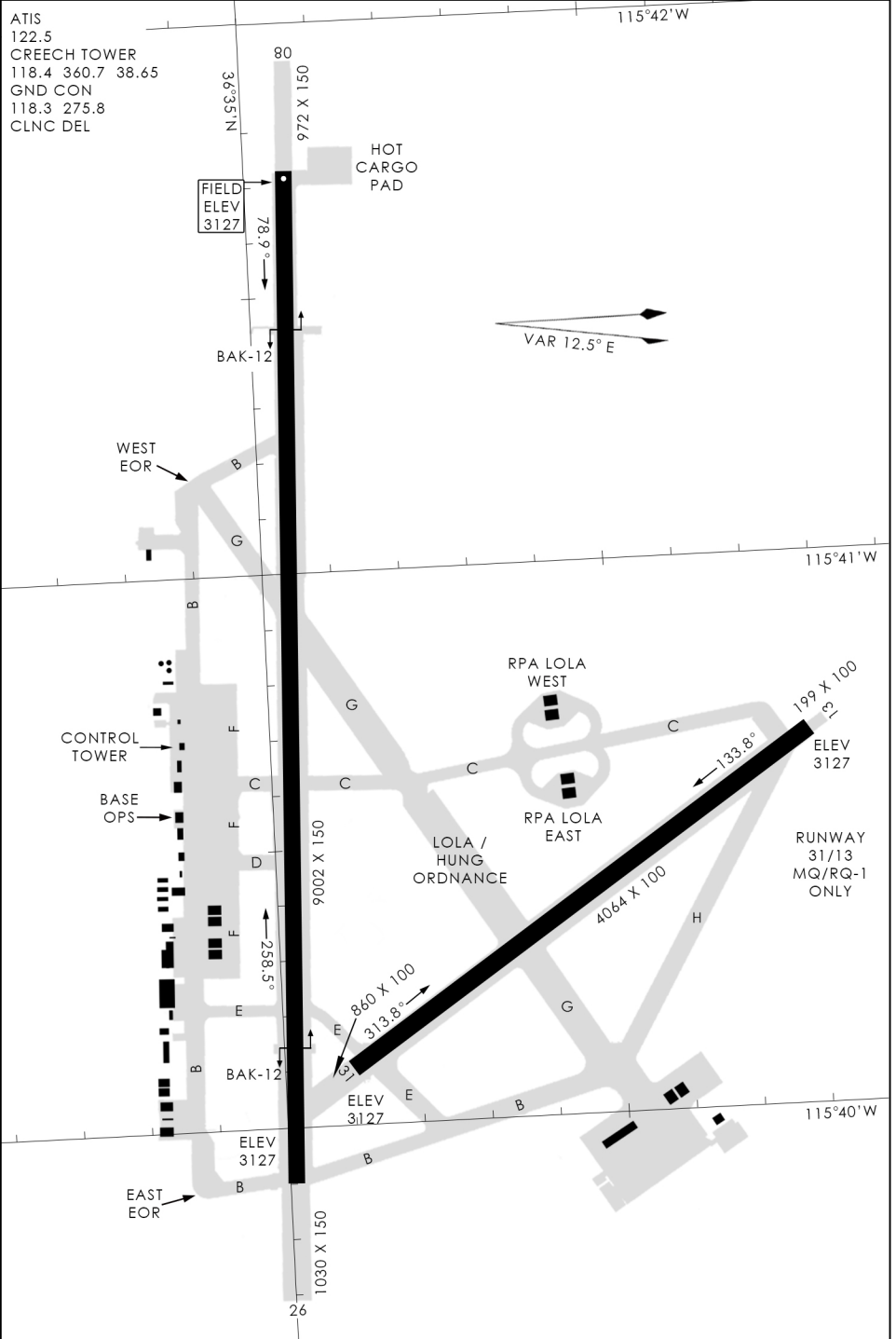
FIELD  
 ELEV  
 3127

HOT  
 CARGO  
 PAD



476 VFG JAN 2019

476 VFG JAN 2019



# AIRPORT DIAGRAM