

MISSION DATA CARD

OPORD		Callsign		Mission		Date/Time	
3462/2024		Ford* 1		Training		082000DEC24	
Task						Freq	
AO						135.5	
Departure				Recovery			
VFR Helicopter				VFR Helicopter			
#	Callsign	Pilot		IFF	TCN	LSR	NET
-1	Ford* 1-1	Butcher		4421	1Y	1251	

LOADOUT

A/A					GUN	100% none
A/G					CHF	120
POD					FLR	120
TKS					FUEL	100%

TOLD

	Takeoff	Target	Joker	Bingo	Land
FUEL	6734				

AIRBASES

	Name	TCN	ATIS	GND	TWR	RWY	Elev	ILS
Dep	Rovaniemi	14X	282.8	282.5	250.55	21	643	111.7
Arr	Rovaniemi	14X	282.8	282.5	250.55	21	643	111.7
Div	Kemi Tornio	106X			250.3	36	62	110.9

FLIGHTPLAN

#	Name	Navaid/Coords/DME	ALT	TOT
1	Initial03	N66 28.793 E025 44.105	500	
2	IMARI	N66 28.406 E025 31.291	500	
3	VIKA	N66 37.474 E026 13.557	500	

COMMS

Radio	Usage
1	ATIS 282.8; GRD 282.5; TWR 250.55

NOTES

CTR: avoid overflying populated areas, remain below 1500ft MSL

SUPPORT**AWACS**

Callsign

Freq

ALT

Pos

HEIMDALL

348.7

OTHER FLIGHTS

Callsign	Mission	Airframe	Freq	TCN	Grpld	Laser
Raptor 1	Training	4x F-16C	134.0	1/64		162X
	AO	SWE-ESR01 Range	Task	Template Test/SEAD/AAR		
Tiger 3	Training	4x F/A-18C	261.15	1/64		155X
	AO	ESR03	Task	Convoy Hunt		
Nazgul 6	Training	1x F-15E	262.45	1/64		156X
	AO		Task			
T-Rex 2	Training	2x A-10C	132.25	1/64	25	165X
	AO		Task	Testing		

RADIO CHANNELS

#	Freq	Name
1		Flight/Squadron specific
2	282.8	Rovaniemi ATIS
3	282.5	Rovaniemi Ground
4	250.55	Rovaniemi Tower
5	320.7	Bodo ATIS
6	250.75	Bodo Tower
7	235.45	Kallax ATIS
8	250.3	Kallax Tower
9	265.0	Texaco-1 KC-135 Medium / Slow 71Y
10	319.8	Arco-1 KC-135 High / Fast 22Y
11	360.8	Shell-1 KC-135 MPRS High / Fast 41Y
12	304.0	CVN-71 Rough Rider (RRR) 71X
13	303.0	LHA-1 Tarawa (TWA) 79X
14	247.8	S-3B Mauler-1 (MAU) 64Y
15	347.8	Loki (E-2D)
16	348.7	Heimdall (E-3A)
17	242.17	ESR02 - CAS Range Operator
18	34.7	ESR02 - JTAC Odin
19	270.5	Blue
20	270.75	Red

RAMROD

0	1	2	3	4	5	6	7	8	9
C	Y	B	E	R	P	U	N	K	S

KTC 1400 C

	0	1	2	3	4	5	6	7	8	9
A	GPXU	RKY	AFM	LE	NH	WIV	QO	JD	SB	CT
B	SJKN	PUV	FRT	EQ	MC	WHI	YG	XA	BL	OD
C	SWYF	VGN	ADJ	PT	CE	LOB	UK	QX	RI	HM
D	WFXO	NHJ	IMK	DL	UY	BER	TS	PG	QV	CA
E	TBXY	RQU	HOS	AM	CW	NFJ	IE	GP	LD	VK
F	KXVF	PUB	GMA	SE	RY	TQD	IL	HW	ON	JC
G	IPSN	JEF	XTR	WM	CU	AYG	OD	BV	HL	QK
H	PJTA	VQC	WES	RO	IN	XDL	FU	MB	HY	KG
I	HBSX	AVC	NFU	WL	QM	YEG	KJ	OT	RP	ID
J	RAVY	NWK	MGC	QU	HD	PEJ	FB	IL	OS	TX
K	GNEH	WPX	MFY	RD	JI	BLV	AQ	US	TK	CO
L	LVDJ	ICX	UTA	NQ	RP	YOG	BM	HW	FS	KE
M	ILSC	BRM	EFW	XY	TG	VND	PO	KA	JU	QH
N	DRFQ	JBH	LNJ	WP	CM	UGO	ES	AK	TX	IV
O	YNDC	ITJ	USO	FX	HA	BVM	QE	RP	WL	KG
P	VYXK	HPG	DNW	RJ	LI	UCM	TO	ES	AF	QB
Q	ASKR	JLE	NDG	IU	QM	VWC	HX	FO	TB	PY
R	BNHJ	PGF	WUC	TX	AY	LVI	RD	MK	QE	SO
S	IEXL	MYF	GUC	JD	OH	TKR	AQ	BP	WN	SV
T	IXLU	ADS	CFG	JK	YE	NRT	HB	MW	QV	OP
U	OXNB	DMF	KWI	SQ	VH	YJA	RE	LT	PG	CU
V	MQBE	NJO	SPV	FY	KL	RTH	DX	IC	UG	AW
W	FHYG	EMC	DOK	IT	XS	UJN	LA	PV	RW	QB
X	PQHY	RXL	BWO	IN	CJ	FAT	EV	KM	DG	SU
Y	MNQL	YTX	RCD	JU	EP	IHV	KG	FW	SO	BA

NAVAIDS

Id	Name	Channel	Position	Elevation
BOO	Bodo	45	N67 15.838 E014 20.046	43
BNK	Banak	47	N70 03.937 E024 58.181	17
OYA	Andoya	28	N69 17.175 E016 08.658	19

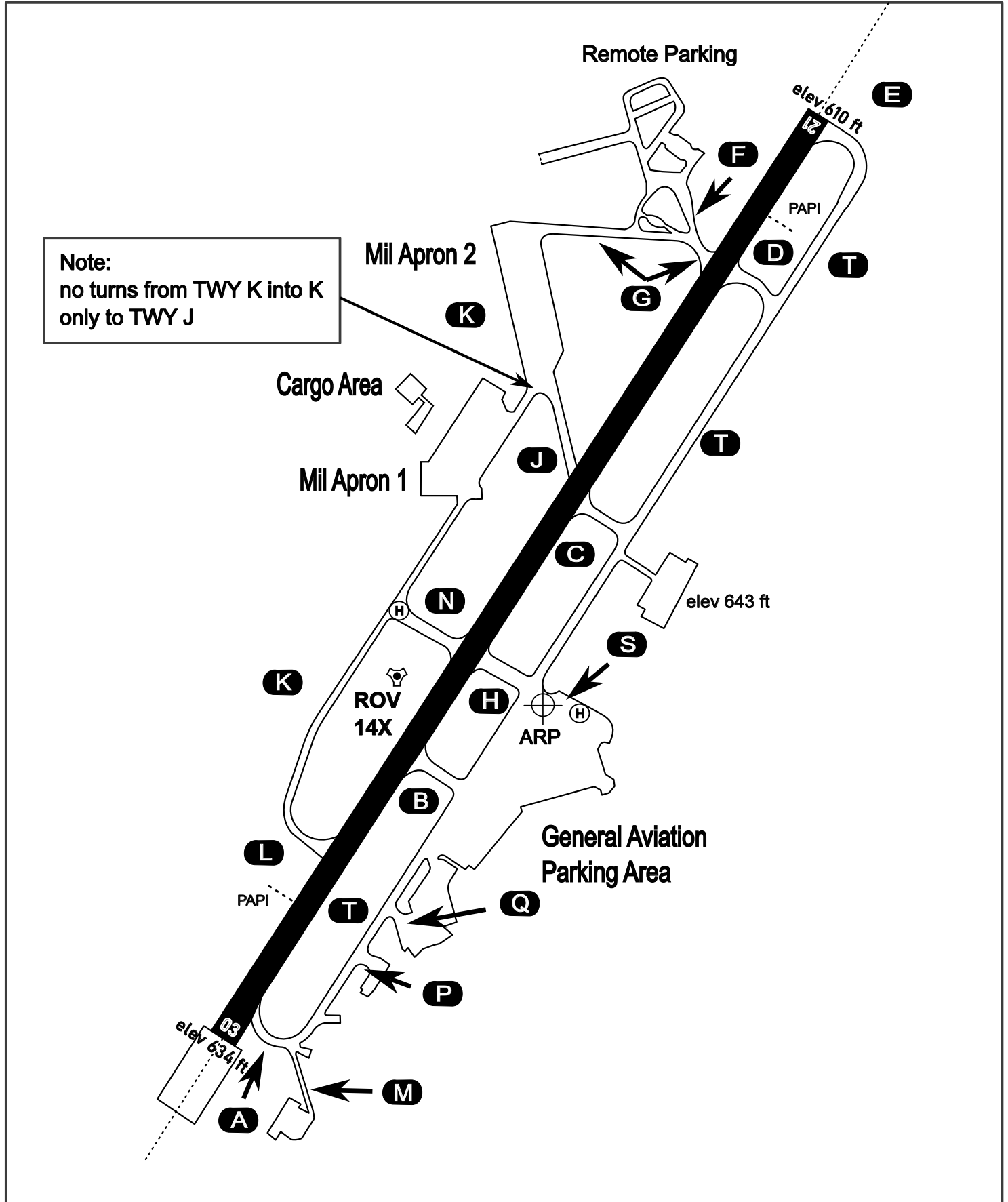
AERODROME CHART

Rovaniemi Aerodrome

ARP N66° 33' 42" E025° 49' 51"

elev 643 ft

ROVANIEMI, FINLAND

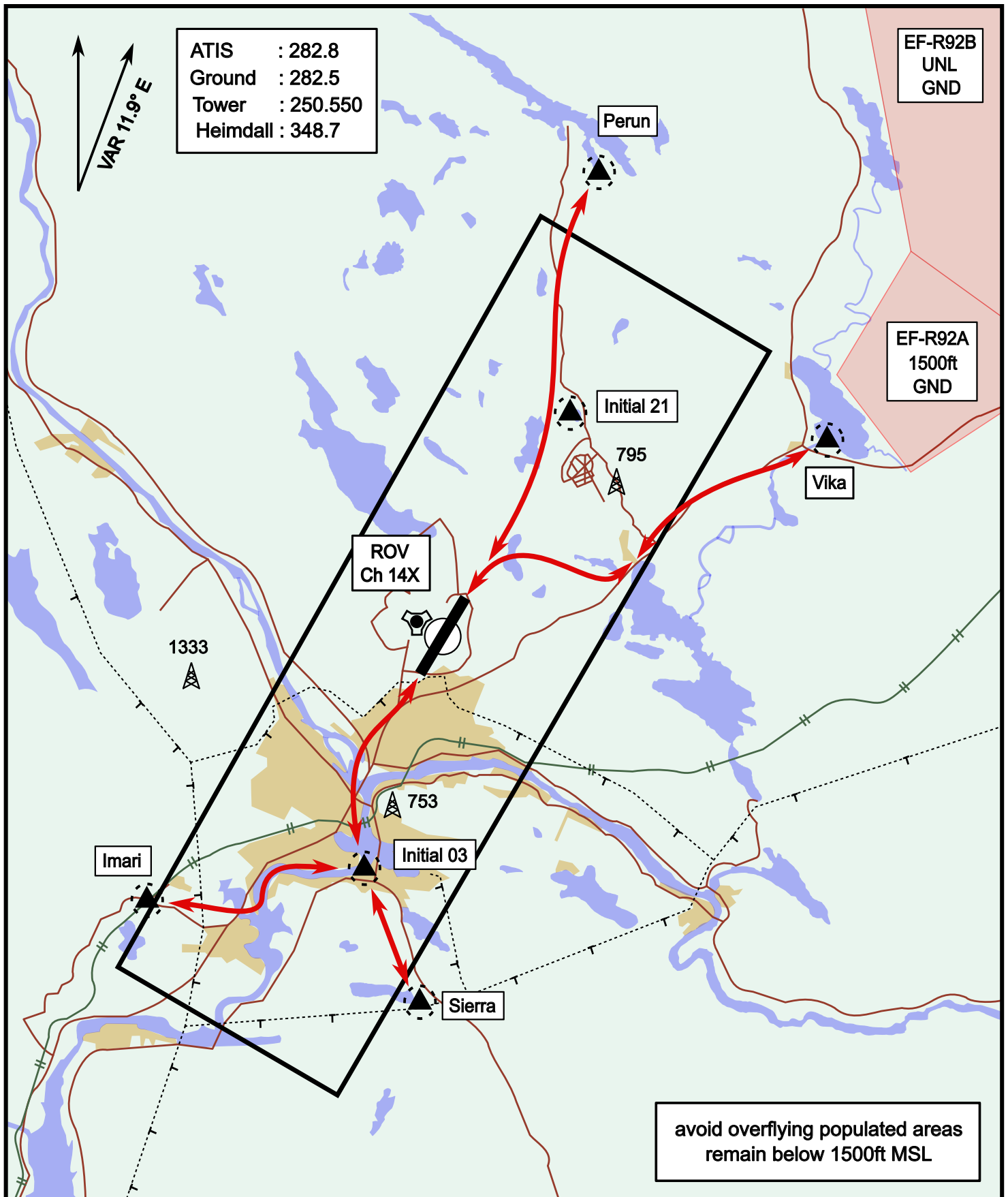


ATIS	Ground	Tower	Radar
282.800	282.500	250.550	348.700

Helicopter Routing

elev 643 ft

Rovaniemi, Finland

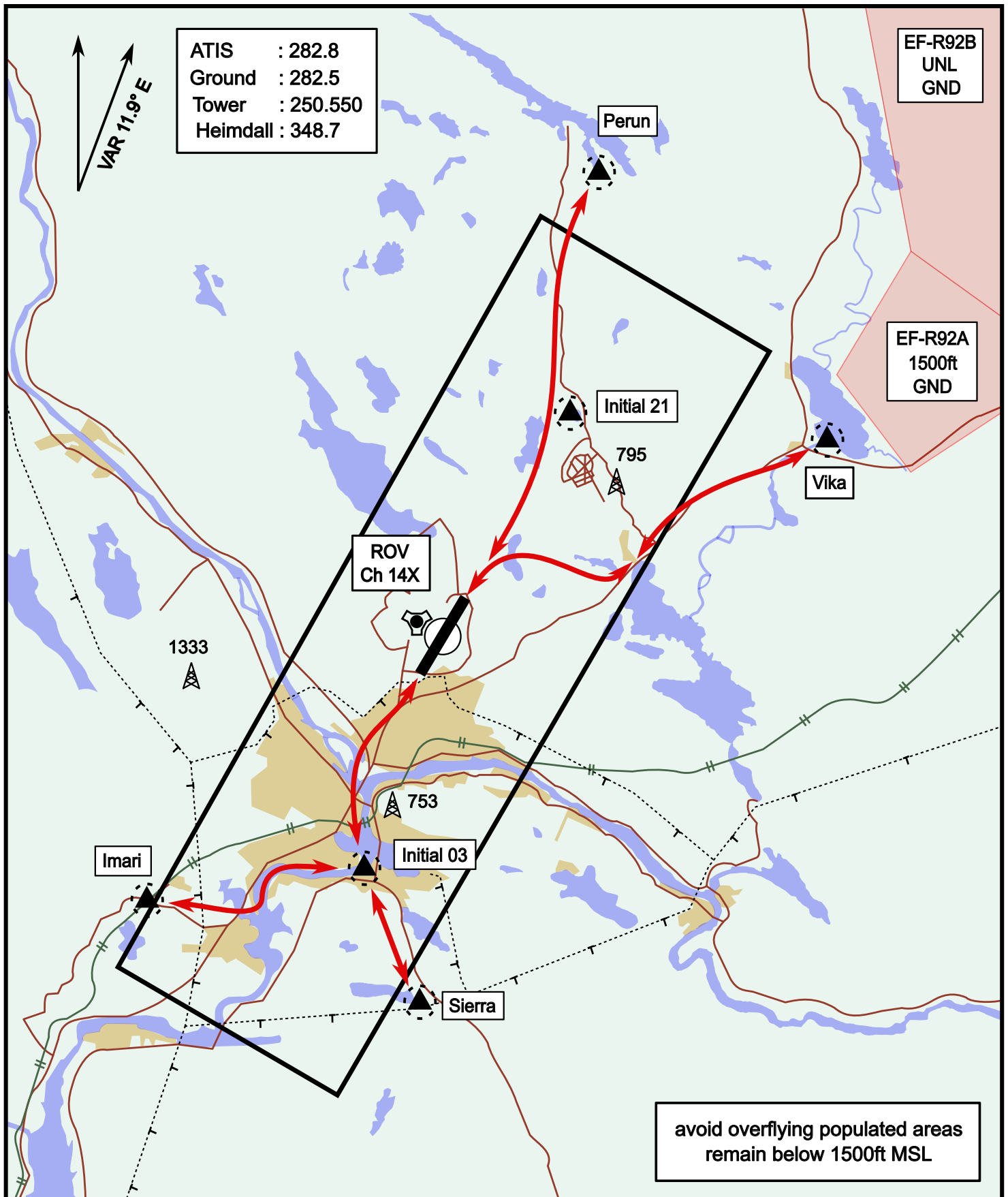


Vika	N66° 37.474 / E026° 13.557	Sierra	N66° 25.711 / E025° 46.610
Perun	N66° 44.135 / E026° 01.630	Imari	N66° 28.406 / E025° 31.291
Initial21	N66° 38.421 / E025° 58.682	Initial03	N66° 28.793 / E025° 44.105

Helicopter Routing

elev 643 ft

Rovaniemi, Finland



Vika	N66° 37.474 / E026° 13.557	Sierra	N66° 25.711 / E025° 46.610
Perun	N66° 44.135 / E026° 01.630	Imari	N66° 28.406 / E025° 31.291
Initial21	N66° 38.421 / E025° 58.682	Initial03	N66° 28.793 / E025° 44.105

NOT AVAILABLE

NOT AVAILABLE