

MISSION DATA CARD

OPORD		Callsign		Mission		Date/Time	
3461/2024		Tiger 3		Training		081613DEC24	
Task	Convoy Hunt					Freq	
AO	ESR03					261.15	
Departure				Recovery			
VFR Depature				VFR Approach			
#	Callsign	Pilot	IFF	TCN	LSR	NET	
-1	Tiger 3-1	Kosmoss	1031	1Y	1551		
-2	Tiger 3-2	Cloud	1032	64Y	1552		
-3	Tiger 3-3	Jemi	1033	64X	1553		

LOADOUT

A/A	2xA9X, A120C			GUN	100% HEI-T		
A/G	4xG12, 2xA65F			CHF	40		
POD	TGP			FLR	80		
TKS	FPU-8A			FUEL	100%		

TOLD

	Takeoff	Target	Joker	Bingo	Land		
FUEL	13047			4000			

AIRBASES

	Name	TCN	ATIS	GND	TWR	RWY	Elev	ILS
Dep	Rovaniemi				250.25	21	643	111.7
Arr	Rovaniemi				250.25	21	643	111.7
Div	kalixfors				301.1	23	1549	

FLIGHTPLAN

#	Name	Navaid/Coords/DME	ALT	TOT
1	Initial21	N66 38.642 E025 58.682	2500	
2	PERUN	N66 44.135 E026 01.630	3500	
3	ESR03		22000	
4	IMARI	N66 28.406 E025 31.291	3000	
5	Initial03	N66 28.793 E025 44.105	2500	

COMMS

Radio	Usage
2	261.15
3	Mids A 22
4	Mids B 44

SUPPORT**Tanker**

Callsign	TCN	Freq	ALT	TAS
SHELL 1	41Y	360.8		
Pos				

OTHER FLIGHTS

Callsign	Mission	Airframe	Freq	TCN	Grpld	Laser
Raptor 1	Training	4x F-16C	134.0	1/64		162X
	AO	SWE-ESR01 Range	Task	Template Test/SEAD/AAR		
Ford* 1	Training	2x CH-47F	135.5	1/64		125X
	AO		Task			
Nazgul 6	Training	1x F-15E	262.45	1/64		156X
	AO		Task			
T-Rex 2	Training	2x A-10C	132.25	1/64	25	165X
	AO		Task	Testing		

RADIO CHANNELS

#	Freq	Name
1		Flight/Squadron specific
2	282.8	Rovaniemi ATIS
3	282.5	Rovaniemi Ground
4	250.55	Rovaniemi Tower
5	320.7	Bodo ATIS
6	250.75	Bodo Tower
7	235.45	Kallax ATIS
8	250.3	Kallax Tower
9	265.0	Texaco-1 KC-135 Medium / Slow
10	319.8	Arco-1 KC-135 High / Fast
11	360.8	Shell-1 KC-135 MPRS High / Fast
12	304.0	CVN-71 Rough Rider (RRR)
13	303.0	LHA-1 Tarawa (TWA)
14	247.8	S-3B Mauler-1 (MAU)
15	347.8	Loki (E-2D)
16	348.7	Heimdall (E-3A)
17	242.17	ESR02 - CAS Range Operator
18	34.7	ESR02 - JTAC Odin
19	270.5	Blue
20	270.75	Red

RAMROD

0	1	2	3	4	5	6	7	8	9
C	Y	B	E	R	P	U	N	K	S

KTC 1400 C

	0	1	2	3	4	5	6	7	8	9
A	GPXU	RKY	AFM	LE	NH	WIV	QO	JD	SB	CT
B	SJKN	PUV	FRT	EQ	MC	WHI	YG	XA	BL	OD
C	SWYF	VGN	ADJ	PT	CE	LOB	UK	QX	RI	HM
D	WFXO	NHJ	IMK	DL	UY	BER	TS	PG	QV	CA
E	TBXY	RQU	HOS	AM	CW	NFJ	IE	GP	LD	VK
F	KXVF	PUB	GMA	SE	RY	TQD	IL	HW	ON	JC
G	IPSN	JEF	XTR	WM	CU	AYG	OD	BV	HL	QK
H	PJTA	VQC	WES	RO	IN	XDL	FU	MB	HY	KG
I	HBSX	AVC	NFU	WL	QM	YEG	KJ	OT	RP	ID
J	RAVY	NWK	MGC	QU	HD	PEJ	FB	IL	OS	TX
K	GNEH	WPX	MFY	RD	JI	BLV	AQ	US	TK	CO
L	LVDJ	ICX	UTA	NQ	RP	YOG	BM	HW	FS	KE
M	ILSC	BRM	EFW	XY	TG	VND	PO	KA	JU	QH
N	DRFQ	JBH	LNJ	WP	CM	UGO	ES	AK	TX	IV
O	YNDC	ITJ	USO	FX	HA	BVM	QE	RP	WL	KG
P	VYXK	HPG	DNW	RJ	LI	UCM	TO	ES	AF	QB
Q	ASKR	JLE	NDG	IU	QM	VWC	HX	FO	TB	PY
R	BNHJ	PGF	WUC	TX	AY	LVI	RD	MK	QE	SO
S	IEXL	MYF	GUC	JD	OH	TKR	AQ	BP	WN	SV
T	IXLU	ADS	CFG	JK	YE	NRT	HB	MW	QV	OP
U	OXNB	DMF	KWI	SQ	VH	YJA	RE	LT	PG	CU
V	MQBE	NJO	SPV	FY	KL	RTH	DX	IC	UG	AW
W	FHYG	EMC	DOK	IT	XS	UJN	LA	PV	RW	QB
X	PQHY	RXL	BWO	IN	CJ	FAT	EV	KM	DG	SU
Y	MNQL	YTX	RCD	JU	EP	IHV	KG	FW	SO	BA

NAVAIDS

Id	Name	Channel	Position	Elevation
BOO	Bodo	45	N67 15.838 E014 20.046	43
BNK	Lakselv Banak	47	N70 03.937 E024 58.181	17

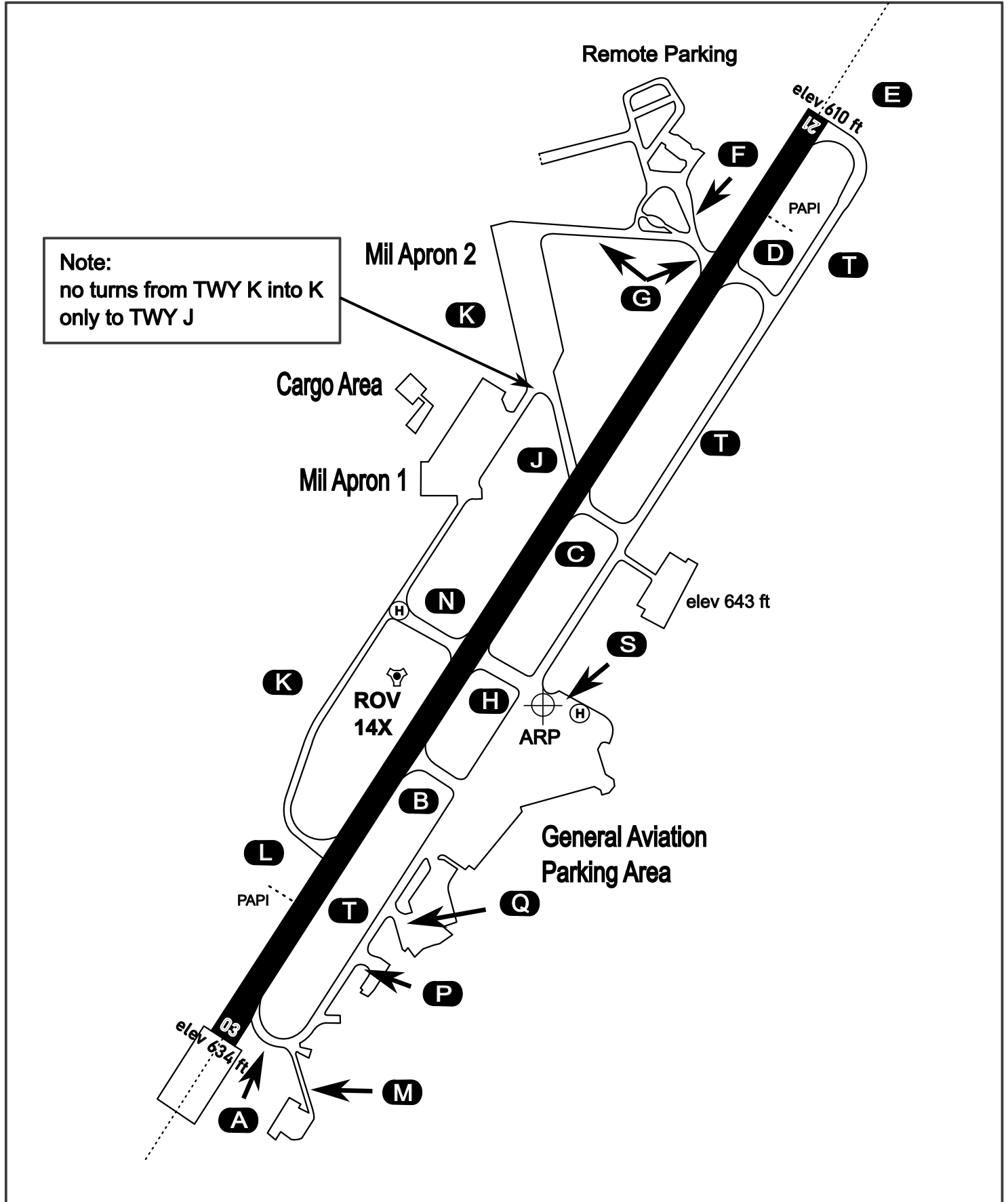
AERODROME CHART

Rovaniemi Aerodrome

ARP N66° 33' 42" E025° 49' 51"

elev 643 ft

ROVANIEMI, FINLAND

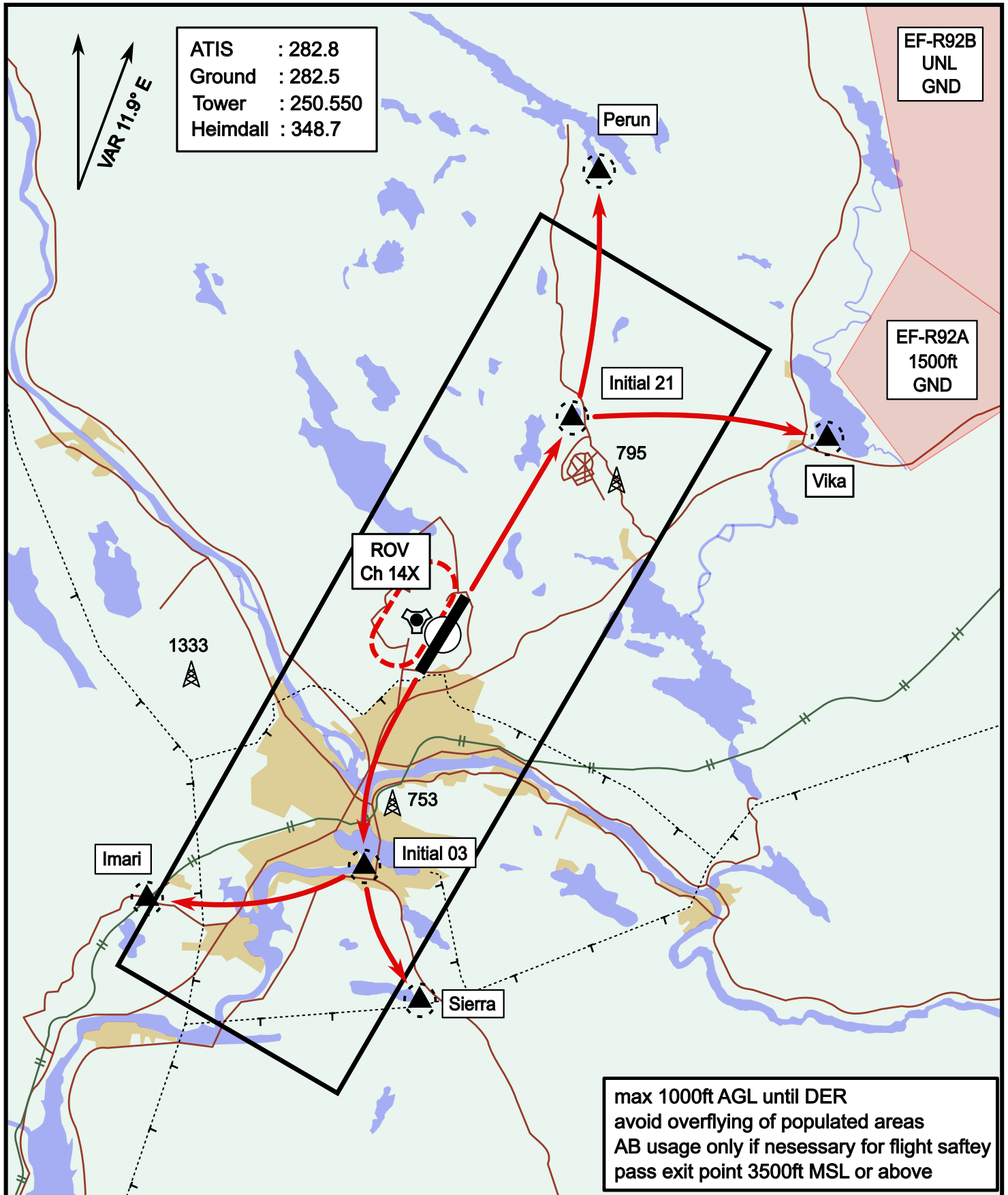


ATIS	Ground	Tower	Radar
282.800	282.500	250.550	348.700

Visual Departure Jet

elev 643 ft

Rovaniemi, Finland

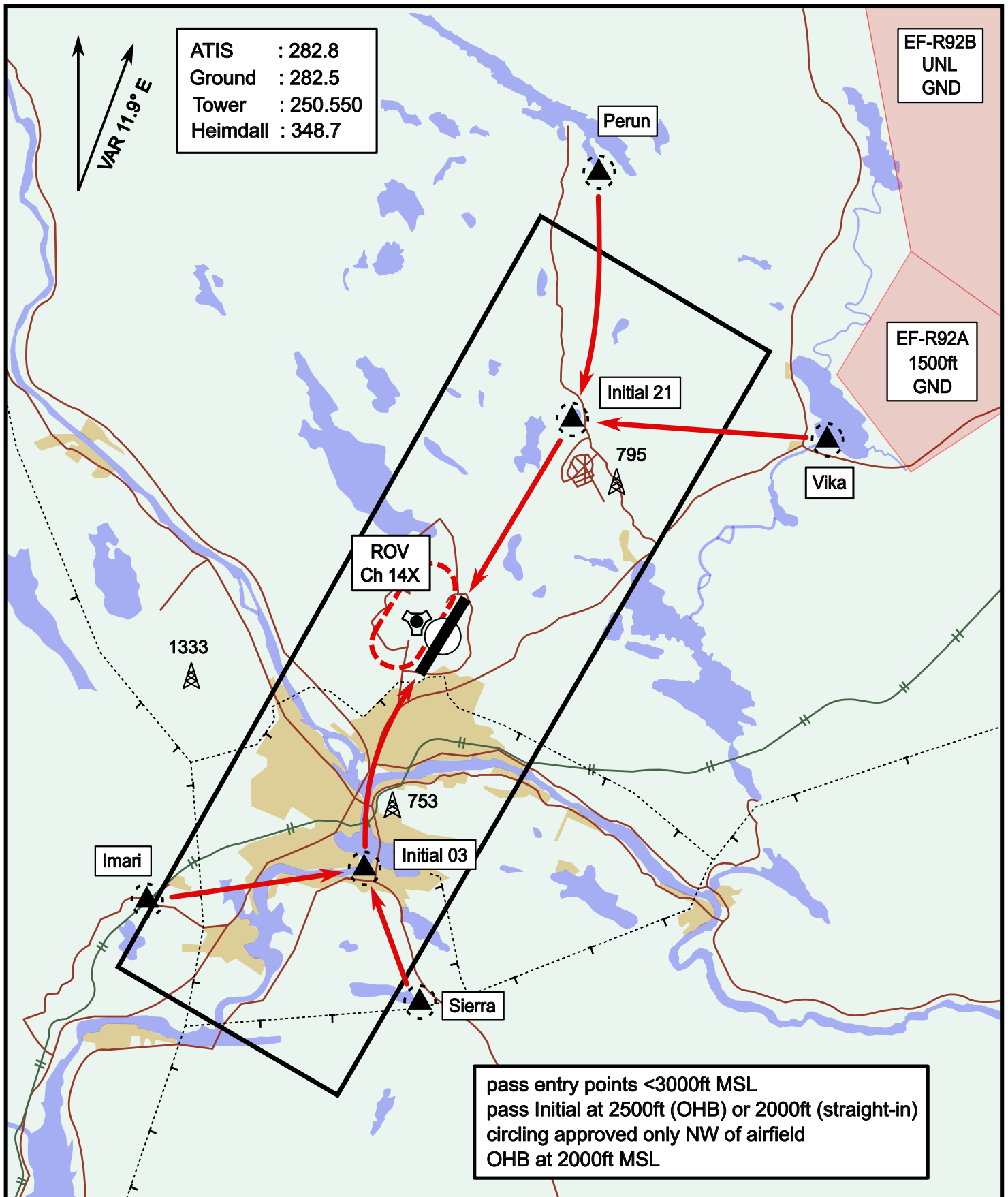


Vika	N66° 37.474 / E026° 13.557	Sierra	N66° 25.711 / E025° 46.610
Perun	N66° 44.135 / E026° 01.630	Imari	N66° 28.406 / E025° 31.291
Initial21	N66° 38.421 / E025° 58.682	Initial03	N66° 28.793 / E025° 44.105

Visual Approach Jet

elev 643 ft

Rovaniemi, Finland



Vika	N66° 37.474 / E026° 13.557	Sierra	N66° 25.711 / E025° 46.610
Perun	N66° 44.135 / E026° 01.630	Imari	N66° 28.406 / E025° 31.291
Initial21	N66° 38.421 / E025° 58.682	Initial03	N66° 28.793 / E025° 44.105

NOT AVAILABLE

NOT AVAILABLE