

MISSION DATA CARD

| | | | | | | | | |
|----------------|----------|-----------|-------|----------------|-----|-------------|-----|-----|
| OPORD | | Callsign | | Mission | | Date/Time | | |
| 3457/2024 | | Rattler 2 | | Training | | 071200DEC24 | | |
| Task | | | | | | Freq | | |
| AO | | | | | | 135.5 | | |
| Departure | | | | Recovery | | | | |
| VFR Helicopter | | | | VFR Helicopter | | | | |
| # | Callsign | | Pilot | | IFF | TCN | LSR | NET |

LOADOUT

| | | | | | | | |
|-----|--|--|--|--|--|------|--|
| A/A | | | | | | GUN | |
| A/G | | | | | | CHF | |
| POD | | | | | | FLR | |
| TKS | | | | | | FUEL | |

TOLD

| | | | | | |
|------|---------|--------|-------|-------|------|
| | Takeoff | Target | Joker | Bingo | Land |
| FUEL | 2513 | | | | |

AIRBASES

| | | | | | | | | |
|-----|-----------|-----|-------|-------|--------|-----|------|-------|
| | Name | TCN | ATIS | GND | TWR | RWY | Elev | ILS |
| Dep | Rovaniemi | 14X | 282.8 | 282.5 | 250.55 | 21 | 643 | 111.7 |
| Arr | Rovaniemi | 14X | 282.8 | 282.5 | 250.55 | 21 | 643 | 111.7 |

RADIO CHANNELS

| # | Freq | Name |
|----|--------|---|
| 1 | | Flight/Squadron specific |
| 2 | 282.8 | Rovaniemi ATIS |
| 3 | 282.5 | Rovaniemi Ground |
| 4 | 250.55 | Rovaniemi Tower |
| 5 | 320.7 | Bodo ATIS |
| 6 | 250.75 | Bodo Tower |
| 7 | 235.45 | Kallax ATIS |
| 8 | 250.3 | Kallax Tower |
| 9 | 265.0 | Texaco-1 KC-135 Medium / Slow 71Y |
| 10 | 319.8 | Arco-1 KC-135 High / Fast 22Y |
| 11 | 360.8 | Shell-1 KC-135 MPRS High / Fast 41Y |
| 12 | 304.0 | CVN-71 Rough Rider (RRR) 71X |
| 13 | 303.0 | LHA-1 Tarawa (TWA) 79X |
| 14 | 247.8 | S-3B Mauler-1 (MAU) 64Y |
| 15 | 347.8 | Loki (E-2D) |
| 16 | 348.7 | Heimdall (E-3A) |
| 17 | 242.17 | ESR02 - CAS Range Operator |
| 18 | 34.7 | ESR02 - JTAC Odin |
| 19 | 270.5 | Blue |
| 20 | 270.75 | Red |

RAMROD

| | | | | | | | | | |
|---|---|---|---|---|---|---|---|---|---|
| 0 | 1 | 2 | 3 | 4 | 5 | 6 | 7 | 8 | 9 |
| M | A | T | C | H | B | O | X | E | S |

KTC 1400 C

| | 0 | 1 | 2 | 3 | 4 | 5 | 6 | 7 | 8 | 9 |
|---|------|-----|-----|----|----|-----|----|----|----|----|
| A | XPYE | NWJ | RCS | BT | QG | IDH | VL | KA | FU | OM |
| B | EYOM | XIR | NGD | KS | VU | WPA | BF | JQ | TL | HC |
| C | DHPS | TKE | AUC | RX | BO | FGL | MY | VJ | QI | WN |
| D | HJIB | TOG | RQV | LS | AK | DPE | MW | YN | FC | UX |
| E | HIBL | JCD | MGO | NU | RP | YWV | ES | XA | FT | QK |
| F | XIWC | YTB | NOM | JS | AR | PLF | GD | KE | HQ | VU |
| G | TOPJ | IXN | EMY | QW | FL | SHC | DG | BA | KU | VR |
| H | UNWA | LMV | FIJ | GX | DS | CRB | OT | PY | EK | HQ |
| I | GIER | OHU | XFY | TL | KJ | CQW | NP | MA | SV | DB |
| J | GAWF | QRN | VTU | FJ | YH | IOL | MS | CB | PX | KD |
| K | PKBL | GAO | NXS | TD | CE | IWR | QU | YF | JH | VM |
| L | YNUR | GMW | HKQ | AO | EF | IJT | DX | LS | BC | VP |
| M | RSJW | PDT | QNO | IE | YK | LXV | AH | FB | UC | GM |
| N | ILWY | GFM | TNS | XP | RJ | VUC | DE | KO | AH | QB |
| O | QLFN | IUE | XSJ | AW | YG | RCM | BH | DV | TK | OP |
| P | PKMO | BYL | HDS | IX | VQ | UEN | AC | GT | JW | RF |
| Q | ANLO | IPT | WKD | JG | HV | FXS | QY | UR | MB | CE |
| R | TKXC | NQG | JYE | ML | PI | FBR | OA | UH | DW | VS |
| S | JHIR | LDA | XBE | GQ | NF | CTM | VK | PU | OS | YW |
| T | BMWG | NKQ | HXJ | EU | VL | YDC | SI | AT | FP | OR |
| U | HTPB | RUD | NXG | MW | KL | VJC | QA | EI | SY | OF |
| V | KRDF | SWQ | IJA | TM | YL | PVU | OX | NC | EG | HB |
| W | YRPJ | MKU | EHT | OC | WN | ADL | BQ | FV | XI | GS |
| X | CYVI | XFQ | BDM | HS | KE | GJT | NL | UR | PA | OW |
| Y | XEDA | HKM | VFR | LC | NB | SUT | GQ | WI | OY | JP |

NAVAIDS

| Id | Name | Channel | Position | Elevation |
|-----|--------|---------|------------------------|-----------|
| BOO | Bodo | 45 | N67 15.838 E014 20.046 | 43 |
| BNK | Banak | 47 | N70 03.937 E024 58.181 | 17 |
| OYA | Andoya | 28 | N69 17.175 E016 08.658 | 19 |

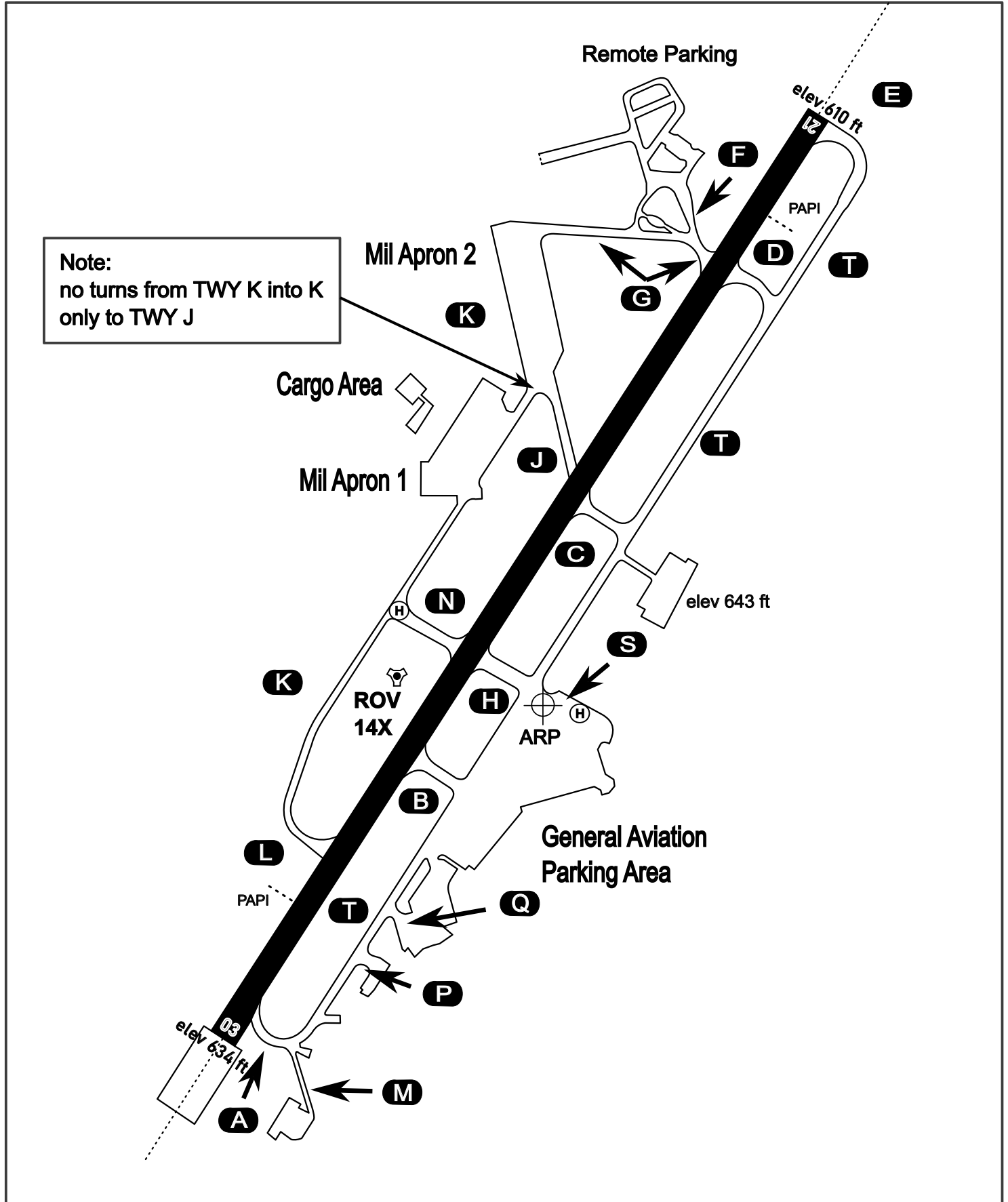
AERODROME CHART

Rovaniemi Aerodrome

ARP N66° 33' 42" E025° 49' 51"

elev 643 ft

ROVANIEMI, FINLAND

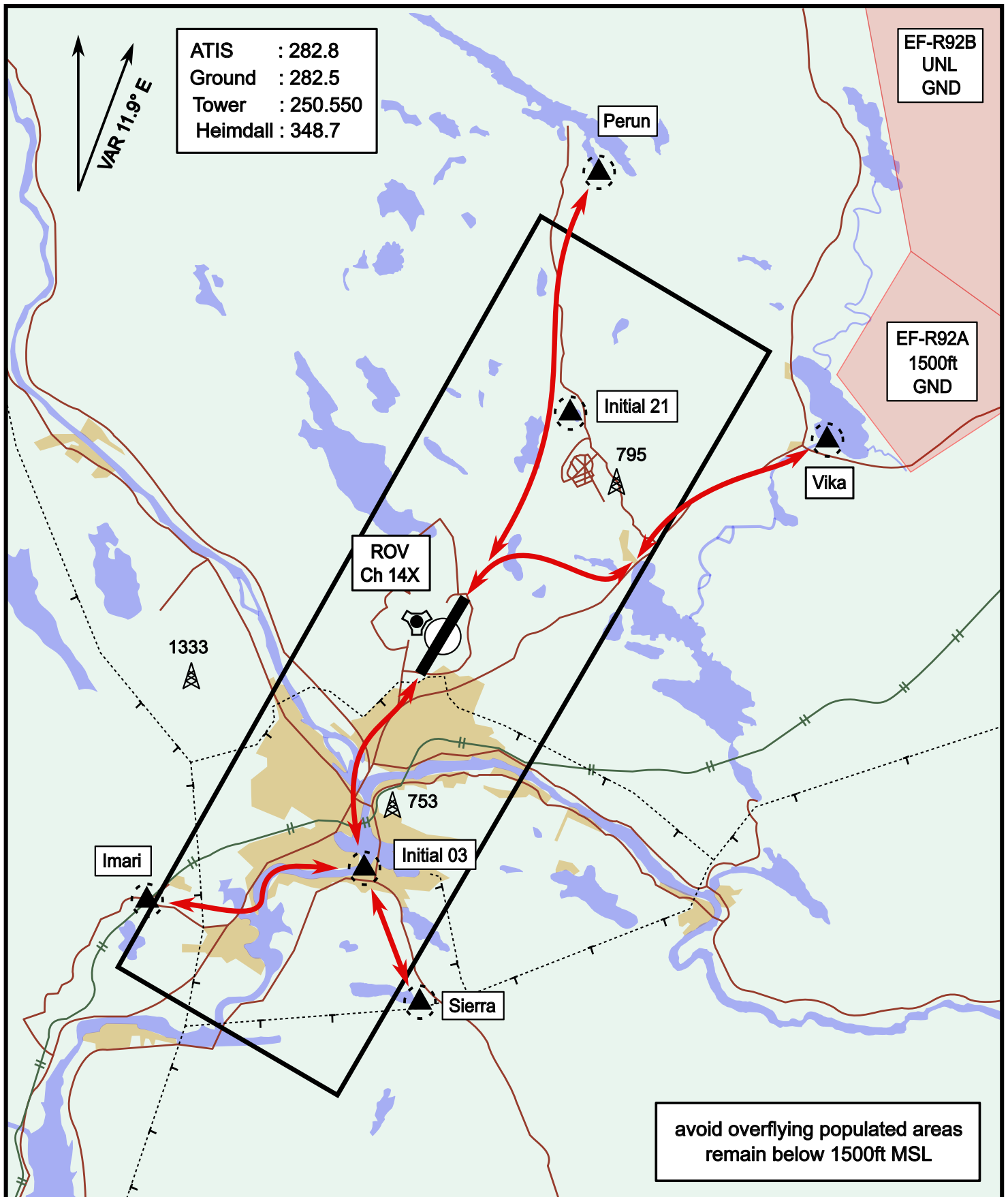


| ATIS | Ground | Tower | Radar |
|---------|---------|---------|---------|
| 282.800 | 282.500 | 250.550 | 348.700 |

Helicopter Routing

elev 643 ft

Rovaniemi, Finland

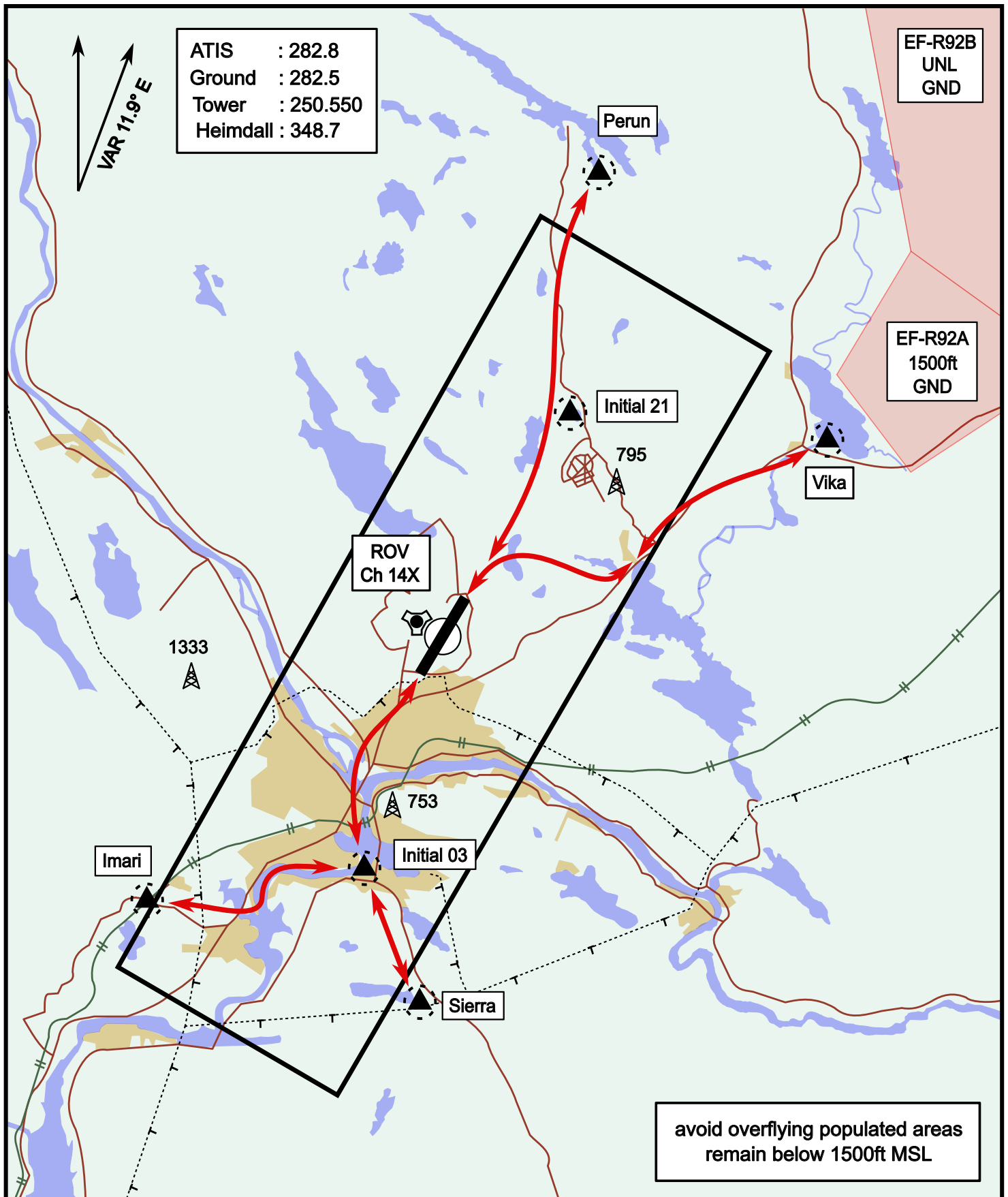


| | | | |
|-----------|----------------------------|-----------|----------------------------|
| Vika | N66° 37.474 / E026° 13.557 | Sierra | N66° 25.711 / E025° 46.610 |
| Perun | N66° 44.135 / E026° 01.630 | Imari | N66° 28.406 / E025° 31.291 |
| Initial21 | N66° 38.421 / E025° 58.682 | Initial03 | N66° 28.793 / E025° 44.105 |

Helicopter Routing

elev 643 ft

Rovaniemi, Finland



| | | | |
|-----------|----------------------------|-----------|----------------------------|
| Vika | N66° 37.474 / E026° 13.557 | Sierra | N66° 25.711 / E025° 46.610 |
| Perun | N66° 44.135 / E026° 01.630 | Imari | N66° 28.406 / E025° 31.291 |
| Initial21 | N66° 38.421 / E025° 58.682 | Initial03 | N66° 28.793 / E025° 44.105 |