

**MISSION DATA CARD**

OPORD		Callsign		Mission		Date/Time		
3454/2024		Raptor 1		Training		081951DEC24		
Task	Template Test/SEAD/AAR					Freq		
AO	SWE-ESR01 Range					134.0		
Departure				Recovery				
VFR Depature				VFR Approach				
#	Callsign		Pilot		IFF	TCN	LSR	NET
-1	Raptor 1-1		Jinx		1611	1Y	1621	
-2	Raptor 1-2		Hercules		1612	64Y	1622	
-3	Raptor 1-3		Beathovenz		1613	64X	1623	

**LOADOUT**

A/A	2xA120C, 2xA9X				GUN	100% HEI-T	
A/G	4xA88C				CHF	60	
POD	HTS, TGP				FLR	60	
TKS	FT300				FUEL	100%	

**TOLD**

	Takeoff	Target	Joker	Bingo	Land
FUEL	9166				

**AIRBASES**

	Name	TCN	ATIS	GND	TWR	RWY	Elev	ILS
Dep	Rovaniemi				250.25	21	643	111.7
Arr	Rovaniemi				250.25	21	643	111.7

**FLIGHTPLAN**

#	Name	Navaid/Coords/DME	ALT	TOT
1	SIERRA	N66 25.711 E025 46.610	3000	
2	Initial21	N66 38.642 E025 58.682	2500	
3	PERUN	N66 44.135 E026 01.630	3000	
4	Initial03	N66 28.793 E025 44.105	2500	
5	ROTKO	N66 57.633 E025 57.667	9000	
6	IP	N68 00.900 E021 28.371	25000	
7	TGT	N68 27.930 E020 52.903	2000	

## NOTES

Raptor 1-2 und 1-3 Loadout: anstelle der Harm 2 CBU 105 und 2 GBU 38 JDAM

**SUPPORT****Tanker**

Callsign	TCN	Freq	ALT	TAS
ARCO 1	22Y	319.8		
Pos				

## OTHER FLIGHTS

Callsign	Mission	Airframe	Freq	TCN	Grpld	Laser
Tiger 3	Training	4x F/A-18C	261.15	1/64		155X
	AO	ESR03	Task	Convoy Hunt		
Ford* 1	Training	2x CH-47F	135.5	1/64		125X
	AO		Task			
Nazgul 6	Training	1x F-15E	262.45	1/64		156X
	AO		Task			
T-Rex 2	Training	2x A-10C	132.25	1/64	25	165X
	AO		Task	Testing		

## RADIO CHANNELS

#	Freq	Name
1		Flight/Squadron specific
2	282.8	Rovaniemi ATIS
3	282.5	Rovaniemi Ground
4	250.55	Rovaniemi Tower
5	320.7	Bodo ATIS
6	250.75	Bodo Tower
7	235.45	Kallax ATIS
8	250.3	Kallax Tower
9	265.0	Texaco-1   KC-135   Medium / Slow
10	319.8	Arco-1   KC-135   High / Fast
11	360.8	Shell-1   KC-135 MPRS   High / Fast
12	304.0	CVN-71 Rough Rider (RRR)
13	303.0	LHA-1 Tarawa (TWA)
14	247.8	S-3B Mauler-1 (MAU)
15	347.8	Loki (E-2D)
16	348.7	Heimdall (E-3A)
17	242.17	ESR02 - CAS Range Operator
18	34.7	ESR02 - JTAC Odin
19	270.5	Blue
20	270.75	Red

**RAMROD**

0	1	2	3	4	5	6	7	8	9
C	Y	B	E	R	P	U	N	K	S

**KTC 1400 C**

	0	1	2	3	4	5	6	7	8	9
A	GPXU	RKY	AFM	LE	NH	WIV	QO	JD	SB	CT
B	SJKN	PUV	FRT	EQ	MC	WHI	YG	XA	BL	OD
C	SWYF	VGN	ADJ	PT	CE	LOB	UK	QX	RI	HM
D	WFXO	NHJ	IMK	DL	UY	BER	TS	PG	QV	CA
E	TBXY	RQU	HOS	AM	CW	NFJ	IE	GP	LD	VK
F	KXVF	PUB	GMA	SE	RY	TQD	IL	HW	ON	JC
G	IPSN	JEF	XTR	WM	CU	AYG	OD	BV	HL	QK
H	PJTA	VQC	WES	RO	IN	XDL	FU	MB	HY	KG
I	HBSX	AVC	NFU	WL	QM	YEG	KJ	OT	RP	ID
J	RAVY	NWK	MGC	QU	HD	PEJ	FB	IL	OS	TX
K	GNEH	WPX	MFY	RD	JI	BLV	AQ	US	TK	CO
L	LVDJ	ICX	UTA	NQ	RP	YOG	BM	HW	FS	KE
M	ILSC	BRM	EFW	XY	TG	VND	PO	KA	JU	QH
N	DRFQ	JBH	LNJ	WP	CM	UGO	ES	AK	TX	IV
O	YNDC	ITJ	USO	FX	HA	BVM	QE	RP	WL	KG
P	VYXK	HPG	DNW	RJ	LI	UCM	TO	ES	AF	QB
Q	ASKR	JLE	NDG	IU	QM	VWC	HX	FO	TB	PY
R	BNHJ	PGF	WUC	TX	AY	LVI	RD	MK	QE	SO
S	IEXL	MYF	GUC	JD	OH	TKR	AQ	BP	WN	SV
T	IXLU	ADS	CFG	JK	YE	NRT	HB	MW	QV	OP
U	OXNB	DMF	KWI	SQ	VH	YJA	RE	LT	PG	CU
V	MQBE	NJO	SPV	FY	KL	RTH	DX	IC	UG	AW
W	FHYG	EMC	DOK	IT	XS	UJN	LA	PV	RW	QB
X	PQHY	RXL	BWO	IN	CJ	FAT	EV	KM	DG	SU
Y	MNQL	YTX	RCD	JU	EP	IHV	KG	FW	SO	BA

**NAVAIDS**

Id	Name	Channel	Position	Elevation
BOO	Bodo	45	N67 15.838 E014 20.046	43
BNK	Lakselv Banak	47	N70 03.937 E024 58.181	17



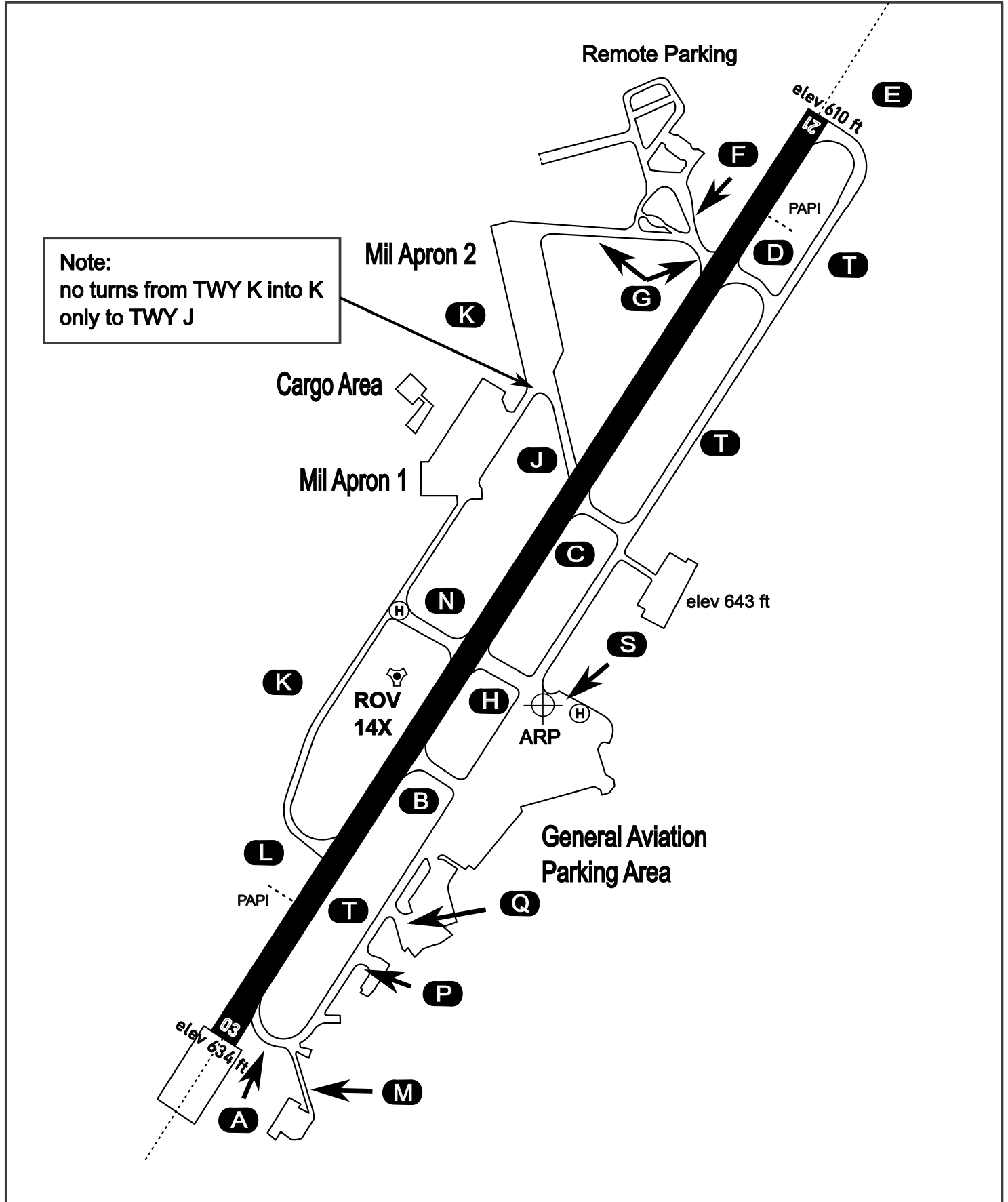
# AERODROME CHART

Rovaniemi Aerodrome

ARP N66° 33' 42" E025° 49' 51"

elev 643 ft

## ROVANIEMI, FINLAND

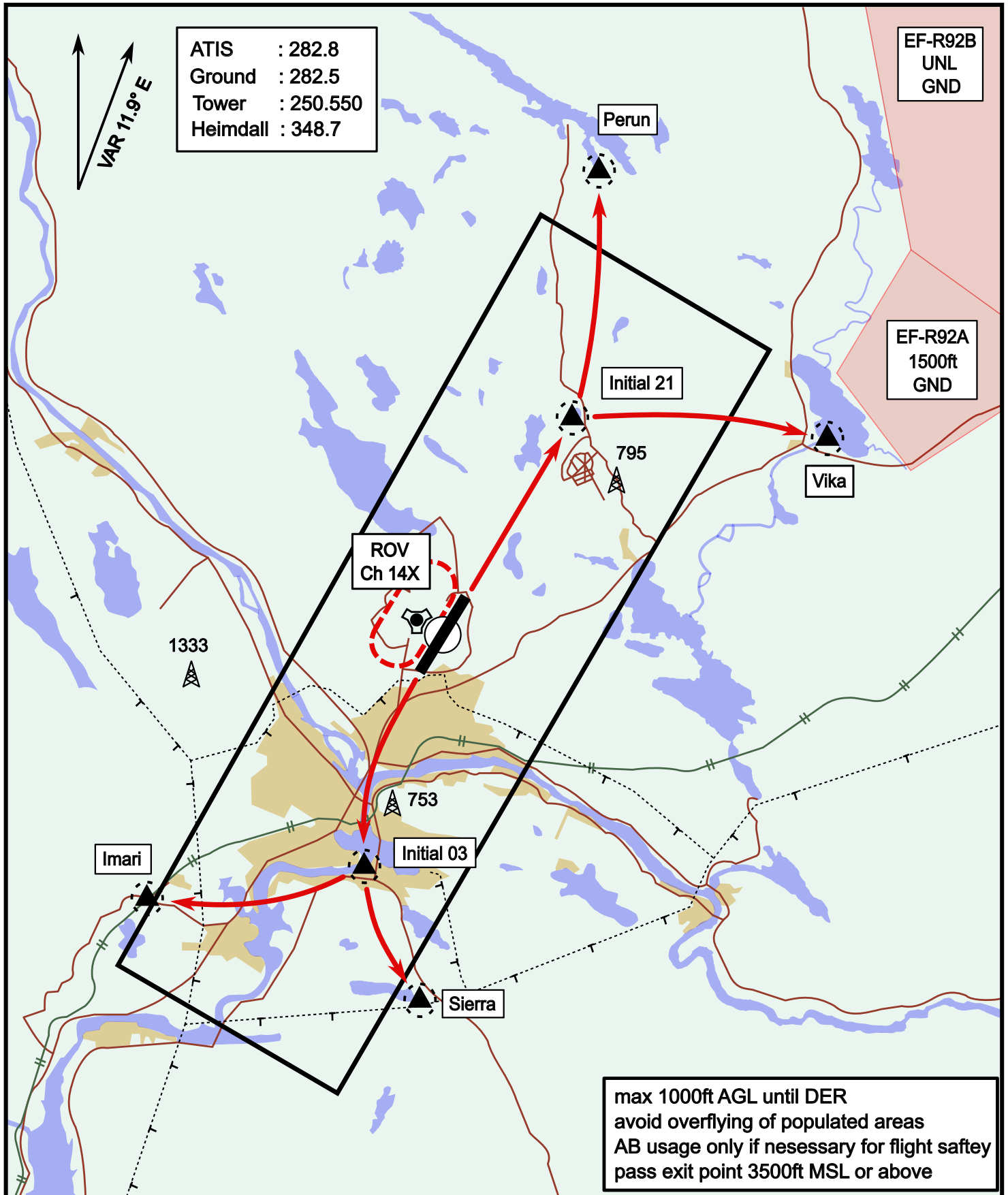


ATIS	Ground	Tower	Radar
282.800	282.500	250.550	348.700

# Visual Departure Jet

elev 643 ft

# Rovaniemi, Finland

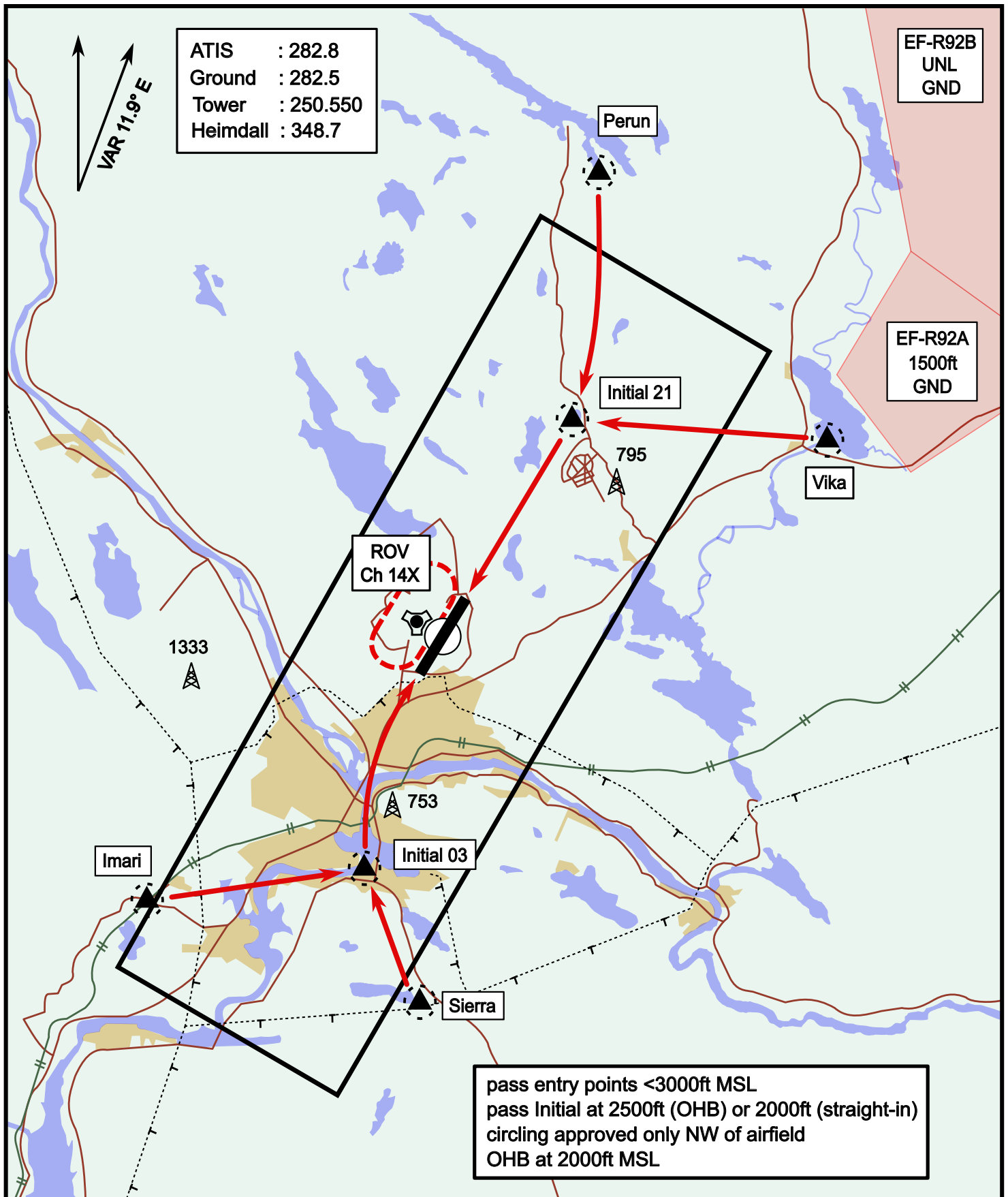


Vika	N66° 37.474 / E026° 13.557	Sierra	N66° 25.711 / E025° 46.610
Perun	N66° 44.135 / E026° 01.630	Imari	N66° 28.406 / E025° 31.291
Initial21	N66° 38.421 / E025° 58.682	Initial03	N66° 28.793 / E025° 44.105

# Visual Approach Jet

elev 643 ft

# Rovaniemi, Finland



Vika	N66° 37.474 / E026° 13.557	Sierra	N66° 25.711 / E025° 46.610
Perun	N66° 44.135 / E026° 01.630	Imari	N66° 28.406 / E025° 31.291
Initial21	N66° 38.421 / E025° 58.682	Initial03	N66° 28.793 / E025° 44.105