

MISSION DATA CARD

OPORD		Callsign		Mission		Date/Time		
3450/2024		T-Rex 1		Training		052000DEC24		
Task	Bomb Training					Freq		
AO	R64					132.15		
Departure				Recovery				
FYTTR THREE				STRYK				
#	Callsign		Pilot		IFF	TCN	LSR	NET
-1	T-Rex 1-1		Marsy		1511	1Y	1651	25/01
-2	T-Rex 1-2		Toolface		1512	64Y	1652	25/02
-3	T-Rex 1-3		Lenzi		1513	64X	1653	25/03
-4	T-Rex 1-4		Stoner		1514	1X	1654	25/04

LOADOUT

A/A	A9M				GUN	100% CM	
A/G	7M282L, 6xM82				CHF	120	
POD	A184L, TGP				FLR	360	
TKS					FUEL	80%	

TOLD

	Takeoff	Target	Joker	Bingo	Land
FUEL	8869				

AIRBASES

	Name	TCN	ATIS	GND	TWR	RWY	Elev	ILS
Dep	Nellis AFB	12X	270.1	275.8	327.0	21L	1850	109.1
Arr	Nellis AFB	12X	270.1	275.8	327.0	21L	1850	109.1
Div	Creech AFB	87X	290.45	275.8	360.6			

FLIGHTPLAN

#	Name	Navaid/Coords/DME	ALT	TOT
1	Nellis	N36 14.680 W115 01.500		
2	FLEX	LSV 337/5 (N36 18.620 W115 02.360)	3000	
3	FYTTR	LSV 269/33 (N36 21.440 W115 41.470)	12000	
4	Range 64A	N36 55.505 W115 38.050	12000	
5	STRYK	LSV 282/26 (N36 25.620 W115 30.700)	9500	
6	GASS PEAK	LSV 309/12 (N36 24.140 W115 10.660)	8500	
7	SIMNS	LSV 276/8 (N36 17.340 W115 10.750)	5500	
8	CRAIG	LSV 263/5.5 (N36 15.250 W115 08.270)	5000	
9	APEX	LSV 027/09 (N36 21.580 W114 54.340)	4500	
10	Nellis	N36 14.680 W115 01.500		

COMMS

Radio	Usage
1	132.15
2	11 - 3 - 4 - 16 - 11 - 4 - 3
3	32.00

OTHER FLIGHTS

Callsign	Mission	Airframe	Freq	TCN	Grpld	Laser
Raptor 2	Training	1x F-16C	134.0	1/64		162X
AO		Task	IFR Night, AAR			
Edelweiss 1	Training	2x F/A-18C	264.15	12/75	1	171X
AO		Task	IFR-Training, AAR			
Outlaw 6	Training	2x AH-64D	133.5	1/64	9	171X
AO	Range 74	Task	Strike R74			
Nazgul 6	Training	4x F-15E	262.45	1/64		156X
AO		Task	NITE IFR & AAR			
Panther 7	Training	2x F/A-18C	264.15	12/75	1	171X
AO		Task	IFR-Training, AAR			
Edelweiss 2	Training	2x F-16C	264.25	1/64		172X
AO		Task				

RADIO CHANNELS

#	Freq	Name
1		Flight/Squadron specific
2	289.4	Nellis Clearance Delivery
3	275.8	Nellis Ground
4	327.0	Nellis Tower
5	385.4	Nellis Approach/Departure West
6	273.55	Nellis Approach/Departure East
7	317.525	Nellis Control -- Sally
8	254.4	Nellis Control-- Lee
9	305.6	SOF Bullseye
10	343.725	EMERGENCY SINGLE FRQ
11	270.1	Nellis ATIS
12	360.625	Creech AFB Tower
13	250.1	HAVE QUICK 13
14	251.1	HAVE QUICK 14
15	252.1	HAVE QUICK 15
16	377.8	Blackjack
17	265.0	KC-135 AR-641A
18	360.8	KC-135MPRS AR-635
19	319.8	KC-135MPRS AR-625
20	300.05	KC-135 AR-231V

RAMROD

0	1	2	3	4	5	6	7	8	9
D	I	S	B	A	R	M	E	N	T

KTC 1400 C

	0	1	2	3	4	5	6	7	8	9
A	XALT	PME	VJQ	CR	SY	NUI	WH	GK	FB	OD
B	JSQO	DRY	CAK	FV	BW	XMG	NP	EL	HT	IU
C	RXLG	CWT	NKJ	UF	PH	OBV	DY	SE	QM	AI
D	TWKF	CXV	UGJ	IM	BO	SRN	AL	EH	PQ	DY
E	ACKD	UEP	MBY	JQ	GR	WXF	VS	TO	NI	LH
F	CUFM	IWN	EQG	DR	LH	TBP	VO	AK	JX	YS
G	APXG	TKQ	EVL	SR	UC	ION	HF	JM	BD	WY
H	SAEY	CGD	ORM	TN	JX	VIU	BL	PF	WQ	HK
I	SQYR	AXB	DCT	IE	GO	WKL	UV	HP	NJ	MF
J	MSAV	IKW	QGT	LN	UD	OBC	YH	PJ	XE	FR
K	FWXT	NLY	BCI	RK	PE	ADJ	QM	GH	SV	OU
L	JNRQ	ILE	THO	BF	SY	KCM	PW	GA	UD	VX
M	OUAK	EJH	ITM	XV	WF	LND	GR	YC	BP	SQ
N	CQLH	AJU	TXD	IF	NW	RME	OV	BG	PY	SK
O	IHRD	KMJ	CSU	AX	LT	WNP	VG	FB	EY	OQ
P	WFEB	OXI	GPN	KV	TM	YUC	AQ	LS	DR	HJ
Q	CMLD	JUN	KAQ	TO	VW	GBP	IS	XH	RE	FY
R	FAOI	SUY	THK	MP	QD	JXL	WV	NC	GE	RB
S	XDIP	UNB	MGQ	OY	RS	TFE	VK	LH	AW	CJ
T	WCIO	XBN	DAV	RG	MF	YQL	UT	HS	EP	KJ
U	OBXH	NRP	QMF	CS	AK	EVI	LT	WD	JG	YU
V	FPTQ	NOD	JGY	IU	VR	SCH	AL	BW	MK	EX
W	AIQJ	URT	SHC	MO	YD	FBX	WG	KV	PE	LN
X	YBDQ	RPE	FJU	OX	AI	WMC	NL	TK	GH	VS
Y	OFJS	WQM	UBI	AN	EL	TDG	YP	CX	KV	HR

NAVAIDS

Id	Name	Channel	Position	Elevation
BCE	Bryce Canyon	75	N3741.35 W11218.23	9040
BIH	Bishop	33	N3722.62 W11821.99	4114
BLD	Boulder	114	N3559.75 W11451.82	3650
BTY	Beatty	94	N3648.54 W11644.86	2925
CDC	Cedar City	120	N3747.24 W11304.90	5463
DAG	Daggett	79	N3457.75 W11634.69	1760
EED	Needles	99	N3445.96 W11428.43	650
GFS	Goffs	91	N3507.87 W11510.59	4019
GRL	Groom Lake	18	N3713.91 W11548.16	4475
HEC	Hector	74	N3447.83 W11627.78	1854
ILC	Wilson Creek	110	N3815.02 W11423.65	9318
INS	Creech AFB	87	N3635.20 W11540.12	3101
LAS	McCarran Intl	116	N3604.78 W11509.59	2142
LSV	Nellis	12	N3614.68 W11501.50	1864
MLF	Milford	58	N3821.62 W11300.79	4977
MMM	Mormon Mesa	90	N3646.16 W11416.65	2120
MVA	Mina	98	N3833.92 W11801.97	7860
OAL	Coale Dale	124	N3800.20 W11746.23	4800
PGS	Peach Springs	57	N3537.48 W11332.67	4754
TPH	Tonopah Muni	119	N3801.84 W11702.01	5330
TQQ	Silverbow	77	N3748.00 W11647.00	5500
UTI	St George	23	N3705.29 W11335.53	2871



RWY 3L-21R
 PCN 46 R/C/W/T
 RWY 3R-21L
 PCN 51 R/C/W/T
 2017

PAR	RWY	CAT	MINIMA		ARP	ELEV	Scale 1:35'500	
	21L	A B D E	2057 - 0.8 200	(200-0.8/1.6) GS 3°	36° 14.060° N 115° 01.058° W	1857 [ft] 566 [m]	0 300 600 900 1200 1500 [m]	
	3R	A B D E	2057 - 0.8 200	(200-0.8/1.6) GS 3°			0 1000 2000 3000 4000 5000 [ft]	
SRA	21R	A C D E	2257 - 1.2 350	(350-1.2/1.6)				
	3L	A C D E	2257 - 1.2 350	(350-1.2/1.6)				

RWY	TORA	TODA	ASDA	LDA	PSN	THR	ALS
21L	10051 [ft] 3063 [m]	11051 [ft] 3368 [m]	11051 [ft] 3368 [m]	10051 [ft] 3063 [m]	36°14.043' N	115°01.018' W	⊕
3R	10120 [ft] 3084 [m]	11120 [ft] 3398 [m]	11120 [ft] 3398 [m]	10120 [ft] 3084 [m]	36°13.029' N	115°02.038' W	

ATIS	NELLIS GROUND	NELLIS TOWER	NELLIS CONTROL	TACAN	ILS RWY 21L	NELLIS EAST	NELLIS WEST
270.100 MHz	275.800 121.800	327.000 132.55	317.525	LSV 12X	109.10 Mhz	384.400	385.000

FYTTR THREE DEPARTURE IFR CHART | VALID 2014 LAS VEGAS, NEVADA

ATIS
270.100
NELLIS GROUND
275.800
NELLIS TOWER
327.000
NELLIS CONTROL
317.525
NELLIS DEP/APP EAST
384.400
BLACKJACK
377.800



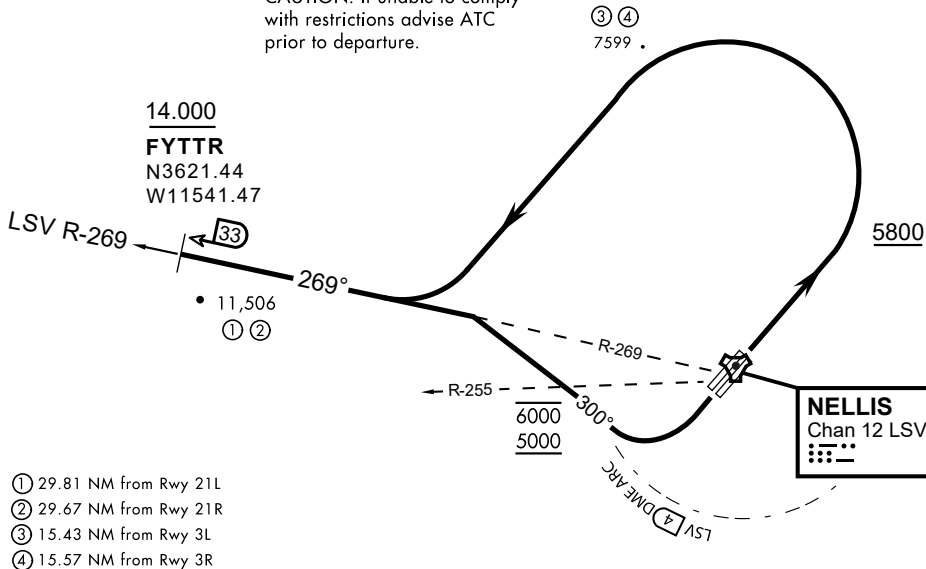
Rwy	Knots	60	120	180	240	300	360
3L (a)	V/V(fpm)	394	788	1182	1576	1970	2364
3R (a)	V/V(fpm)	392	784	1176	1568	1960	2352
21L (b)	V/V(fpm)	388	776	1164	1552	1940	2328
21R (b)	V/V(fpm)	390	780	1170	1560	1950	2340

Minimum Climb Rate

(a) to 9300

(b) to 13 500

CAUTION: If unable to comply with restrictions advise ATC prior to departure.



- ① 29.81 NM from Rwy 21L
- ② 29.67 NM from Rwy 21R
- ③ 15.43 NM from Rwy 3L
- ④ 15.57 NM from Rwy 3R

DEPARTURE ROUTE DESCRIPTION

TAKEOFF RWY 3L/R

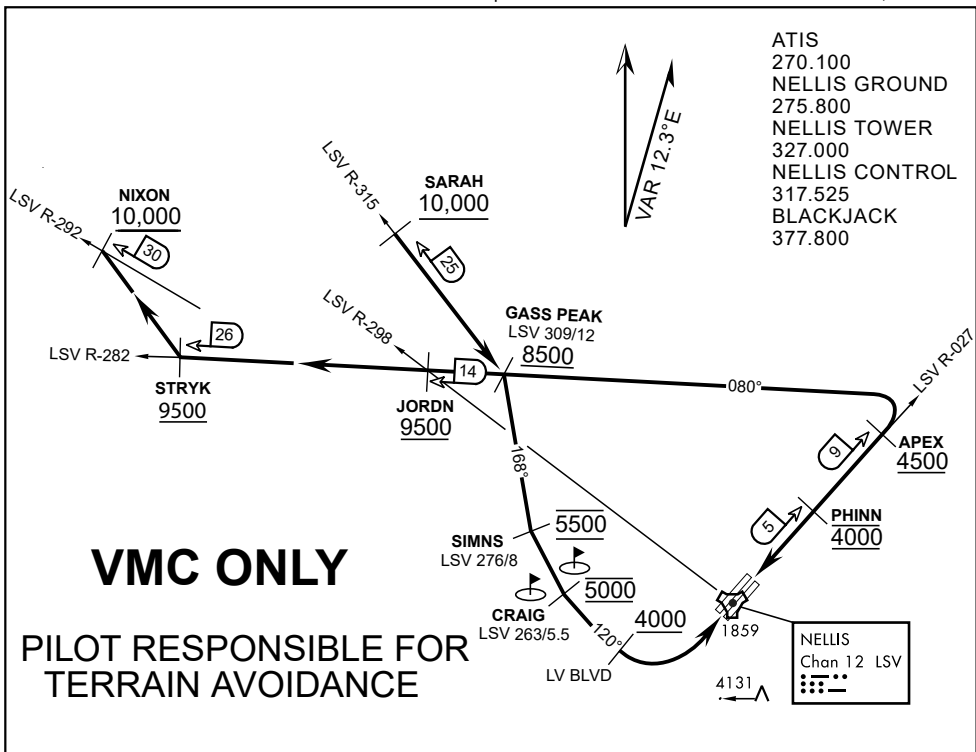
- Fly runway heading until reaching 5,800'.
- Then climbing left turn to intercept LSV TACAN R-269 outbound.
- Cross FYTTR at or above 14,000' or as assigned, then via assigned route.

TAKEOFF RWY 21L/21R

- Turn right to intercept LSV TACAN R-269 outbound.
- Remain within LSV 4 DME until joining LSV R-269
- Cross R-255 between 5,000' and 6,000'.
- Cross FYTTR at or above 14,000' or as assigned, then via assigned route.

NOISE ABATEMENT PROCEDURES:

Fly according Nellis Noise Abatement instructions as published



APPROACH ROUTE DESCRIPTION

APPROACH RWY 3L/R

Cross STRYK at or above 9,500' MSL, proceed direct GASS PEAK. Cross JORDN at or above 9,500' MSL, cross GASS PEAK at or above 8,500' MSL. Proceed direct SIMNS and cross at 5,500' MSL. Cross Las Vegas Blvd at or above 4,000' MSL then to 3,500' MSL for Initial. Remain within 4 DME if LSV on turn to final.

VFR STRAIGHT-IN RWY 3L/R

Depart CRAIG & descend to be at 3,000' MSL by Las Vegas Blvd. Do not descend below 3,000' MSL until within 5 DME of LSV or 4 NM of the runway on turn to final.

APPROACH RWY 21L/R

Cross STRYK at or above 9,500' MSL, proceed direct GASS PEAK. Cross JORDN at or above 9,500' MSL, cross GASS PEAK at or above 8,500' MSL. Cross APEX at or above 4,500' MSL then direct 5NM initial. Descend to cross PHINN at 4,000' MSL, Inside 5 NM descend to 3,500' MSL.

VFR STRAIGHT-IN RWY 21L/R

Cross APEX at 4,000' MSL. Descend to be at 3,000' MSL at PHINN. Descend to 3,000' MSL at LSV 027/5.

RANGE 63B EXIT

SOUTH: Via NIXON at or above 10,000' MSL, then direct STRYK.

EAST: Via SARAH at or above 10,000' MSL, then direct GASS PEAK.



INDIAN SPRINGS, NEVADA

TACAN INS Chan 87	APCH CRS 065°	Rwy ldg TDZE 3133	9002 3113
		Arpt Elev 3113	

INDIAN SPRINGS AF AUX (KINS)

▼ * MISSED APPROACH: Straight ahead to INS TACAN, intercept INS R-outbound, cross 17 DME at or above 9500, then direkt KSV TACAN 114

NELLIS CON

CREECH AFB TOWER
118.30 60.60

GND CON

NOT FOR CIVIL USE

FOR USE UNDER BASIC VFR
WEATHER MINIMUMS ONLY

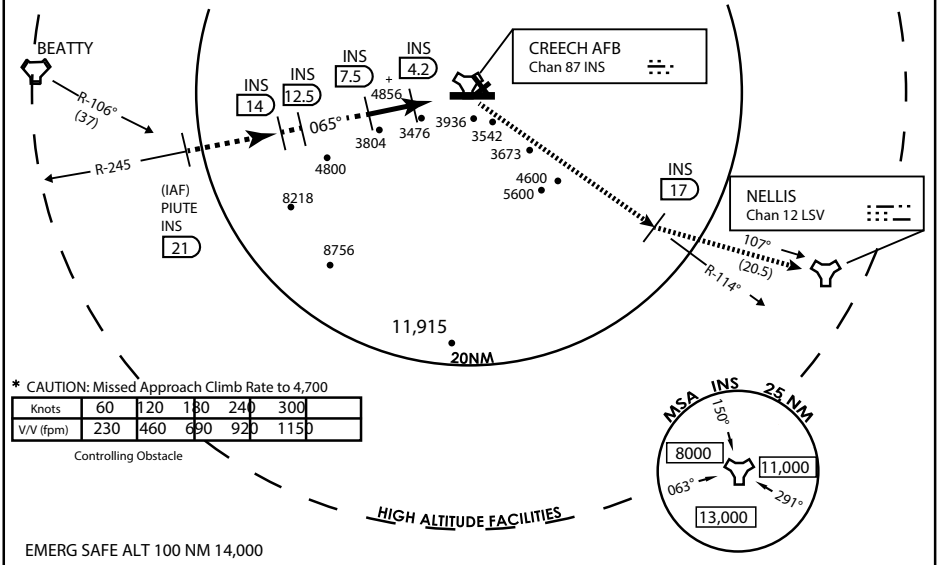
PILOT IS RESPONSIBLE FOR TERRAIN/OBSTACLE AVOIDANCE AND APPROPRIATE VFR CLOUD CLEARANCE FOR ALL

CAUTION: Descent gradients are greater than allowed under standard TERPS criteria and inbound course does not meet straight-in criteria

CAUTION: Final approach course crosses Runway centerline at MIDFIELD. Maneuvering left of course required prior to landing. Do not Maneuver farther north than the INS R- 258

Modified by viaBog 66 for use with DCS
NOT FOR REAL LIFE NAVIGATION

Modified by viaBog 66 for use with DCS
NOT FOR REAL LIFE NAVIGATION

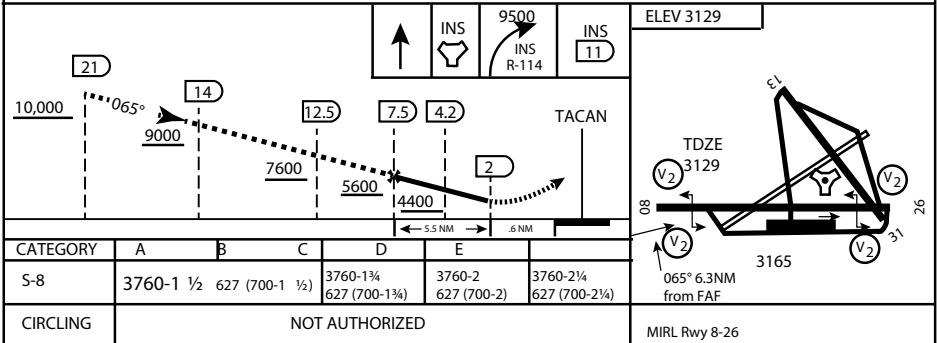


* CAUTION: Missed Approach Climb Rate to 4,700

Knots	60	120	180	240	300
V/V (fpm)	230	460	690	920	1150

Controlling Obstacle

HIGH ALTITUDE FACILITIES



CITY OF INDIAN, NEVADA

INDIAN SPRINGS AF AUX (KINS)

(FOR DAY VFR USE ONLY)



AIRPORT DIAGRAM

476 VFG

CREECH AFB (KINS)
INDIAN SPRINGS, NEVADA

ATIS
 122.5
 CREECH TOWER
 118.4 360.7 38.65
 GND CON
 118.3 275.8
 CLNC DEL

115°42'W

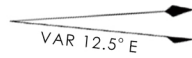
FIELD
 ELEV
 3127

80

972 X 150

HOT CARGO PAD

BAK-12



WEST EOR

115°41'W

476 VFG JAN 2019

476 VFG JAN 2019

CONTROL TOWER
 BASE OPS

RPA LOLA WEST

RPA LOLA EAST

LOLA / HUNG ORDNANCE

RUNWAY
 31/13
 MQ/RQ-1
 ONLY

9002 X 150

258.5°

860 X 100

313.8°

4064 X 100

199 X 100

ELEV 3127

BAK-12

ELEV 3127

115°40'W

EAST EOR

1030 X 150

26

AIRPORT DIAGRAM

INDIAN SPRINGS, NEVADA
CREECH AFB (KINS)