

MISSION DATA CARD

OPORD		Callsign		Mission		Date/Time		
3449/2024		Edelweiss 2		Training		052005DEC24		
Task						Freq		
AO						264.25		
Departure				Recovery				
DREAM FOUR				ILS or LOC/DME X RWY 21L				
#	Callsign		Pilot		IFF	TCN	LSR	NET
-1	Edelweiss 2-1		Jinx		1721	1Y	1721	
-2	Edelweiss 2-2		Beathovenz		1722	64Y	1722	

LOADOUT

A/A						GUN	
A/G						CHF	
POD						FLR	
TKS						FUEL	

TOLD

	Takeoff	Target	Joker	Bingo	Land
FUEL	7163				

AIRBASES

	Name	TCN	ATIS	GND	TWR	RWY	Elev	ILS
Dep	Nellis AFB	12X	270.1	275.8	327.0	21L	1850	109.1
Arr	Nellis AFB	12X	270.1	275.8	327.0	21L	1850	109.1
Div	Creech AFB	87X	290.45	275.8	360.6			

FLIGHTPLAN

#	Name	Navaid/Coords/DME	ALT	TOT
1	DREAM	LAS 354/66 BLD 342/71 (N37 10.340 W114 59.530)	17000	
2	KRYSS	N36 30.369 W114 44.190	8900	
3	STRIP	INS 114/24 (N36 20.600 W115 16.480)	8000	
4	Creech AFB	N36 35.200 W115 40.120	3127	

SUPPORT**Tanker**

Callsign	TCN	Freq	ALT	TAS
TEXACO 1	94Y	265.0	17000	290
Pos	AR-641A: CDC 242/78 (N3728 W11439)			

OTHER FLIGHTS

Callsign	Mission	Airframe	Freq	TCN	Grpld	Laser
Raptor 2	Training	1x F-16C	134.0	1/64		162X
AO		Task	IFR Night, AAR			
Edelweiss 1	Training	2x F/A-18C	264.15	12/75	1	171X
AO		Task	IFR-Training, AAR			
Outlaw 6	Training	2x AH-64D	133.5	1/64	9	171X
AO	Range 74	Task	Strike R74			
Nazgul 6	Training	4x F-15E	262.45	1/64		156X
AO		Task	NITE IFR & AAR			
Panther 7	Training	2x F/A-18C	264.15	12/75	1	171X
AO		Task	IFR-Training, AAR			
T-Rex 1	Training	4x A-10C	132.15	1/64	25	165X
AO	R64	Task	Bomb Training			

RADIO CHANNELS

#	Freq	Name
1		Flight/Squadron specific
2	289.4	Nellis Clearance Delivery
3	275.8	Nellis Ground
4	327.0	Nellis Tower
5	385.4	Nellis Approach/Departure West
6	273.55	Nellis Approach/Departure East
7	317.525	Nellis Control -- Sally
8	254.4	Nellis Control-- Lee
9	305.6	SOF Bullseye
10	343.725	EMERGENCY SINGLE FRQ
11	270.1	Nellis ATIS
12	360.625	Creech AFB Tower
13	250.1	HAVE QUICK 13
14	251.1	HAVE QUICK 14
15	252.1	HAVE QUICK 15
16	377.8	Blackjack
17	265.0	KC-135 AR-641A
18	360.8	KC-135MPRS AR-635
19	319.8	KC-135MPRS AR-625
20	300.05	KC-135 AR-231V

RAMROD

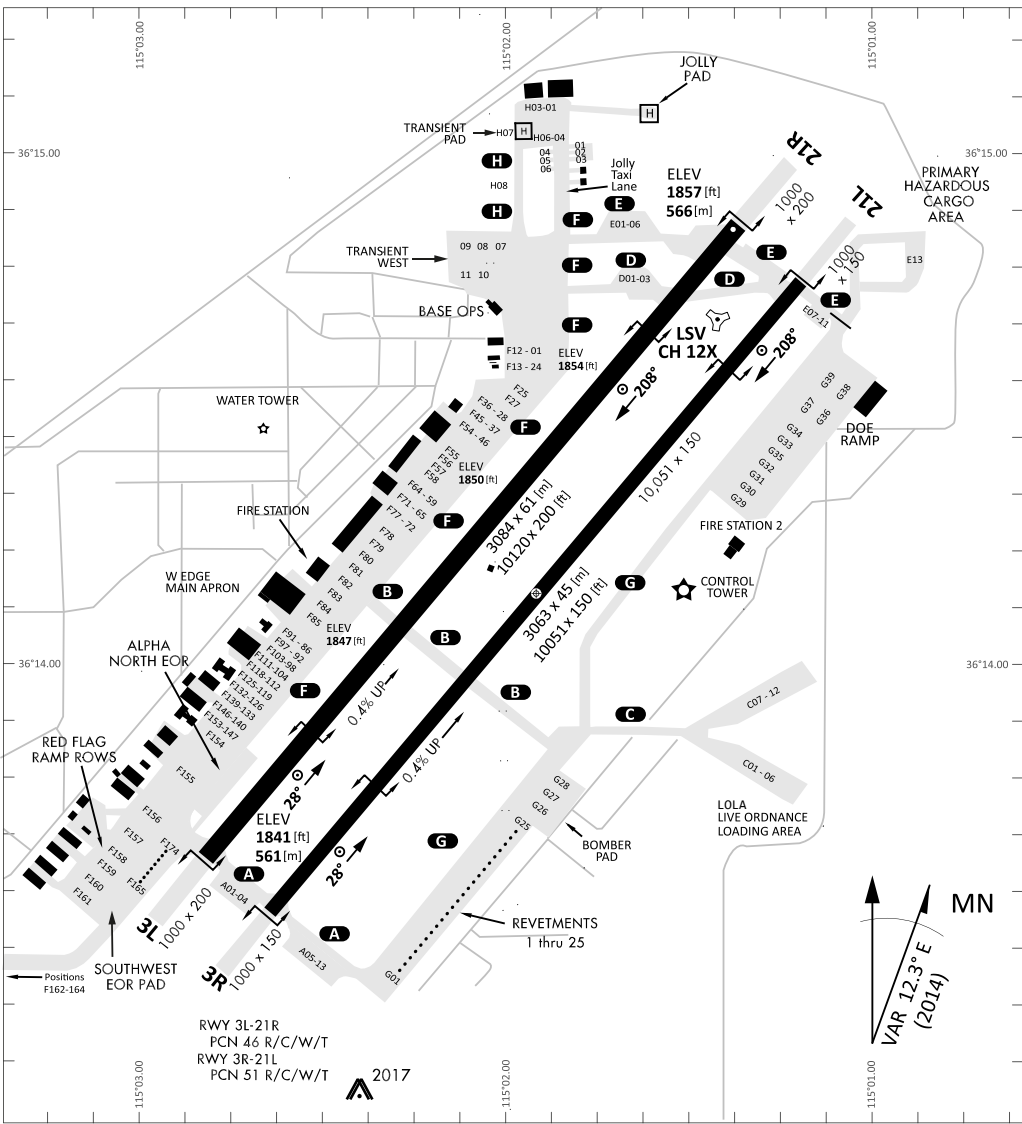
0	1	2	3	4	5	6	7	8	9
D	I	S	B	A	R	M	E	N	T

KTC 1400 C

	0	1	2	3	4	5	6	7	8	9
A	XALT	PME	VJQ	CR	SY	NUI	WH	GK	FB	OD
B	JSQO	DRY	CAK	FV	BW	XMG	NP	EL	HT	IU
C	RXLG	CWT	NKJ	UF	PH	OBV	DY	SE	QM	AI
D	TWKF	CXV	UGJ	IM	BO	SRN	AL	EH	PQ	DY
E	ACKD	UEP	MBY	JQ	GR	WXF	VS	TO	NI	LH
F	CUFM	IWN	EQG	DR	LH	TBP	VO	AK	JX	YS
G	APXG	TKQ	EVL	SR	UC	ION	HF	JM	BD	WY
H	SAEY	CGD	ORM	TN	JX	VIU	BL	PF	WQ	HK
I	SQYR	AXB	DCT	IE	GO	WKL	UV	HP	NJ	MF
J	MSAV	IKW	QGT	LN	UD	OBC	YH	PJ	XE	FR
K	FWXT	NLY	BCI	RK	PE	ADJ	QM	GH	SV	OU
L	JNRQ	ILE	THO	BF	SY	KCM	PW	GA	UD	VX
M	OUAK	EJH	ITM	XV	WF	LND	GR	YC	BP	SQ
N	CQLH	AJU	TXD	IF	NW	RME	OV	BG	PY	SK
O	IHRD	KMJ	CSU	AX	LT	WNP	VG	FB	EY	OQ
P	WFEB	OXI	GPN	KV	TM	YUC	AQ	LS	DR	HJ
Q	CMLD	JUN	KAQ	TO	VW	GBP	IS	XH	RE	FY
R	FAOI	SUY	THK	MP	QD	JXL	WV	NC	GE	RB
S	XDIP	UNB	MGQ	OY	RS	TFE	VK	LH	AW	CJ
T	WCIO	XBN	DAV	RG	MF	YQL	UT	HS	EP	KJ
U	OBXH	NRP	QMF	CS	AK	EVI	LT	WD	JG	YU
V	FPTQ	NOD	JGY	IU	VR	SCH	AL	BW	MK	EX
W	AIQJ	URT	SHC	MO	YD	FBX	WG	KV	PE	LN
X	YBDQ	RPE	FJU	OX	AI	WMC	NL	TK	GH	VS
Y	OFJS	WQM	UBI	AN	EL	TDG	YP	CX	KV	HR

NAVAIDS

Id	Name	Channel	Position	Elevation
BCE	Bryce Canyon	75	N3741.35 W11218.23	9040
BIH	Bishop	33	N3722.62 W11821.99	4114
BLD	Boulder	114	N3559.75 W11451.82	3650
BTY	Beatty	94	N3648.54 W11644.86	2925
CDC	Cedar City	120	N3747.24 W11304.90	5463
DAG	Daggett	79	N3457.75 W11634.69	1760
EED	Needles	99	N3445.96 W11428.43	650
GFS	Goffs	91	N3507.87 W11510.59	4019
GRL	Groom Lake	18	N3713.91 W11548.16	4475
HEC	Hector	74	N3447.83 W11627.78	1854
ILC	Wilson Creek	110	N3815.02 W11423.65	9318
INS	Creech AFB	87	N3635.20 W11540.12	3101
LAS	McCarran Intl	116	N3604.78 W11509.59	2142
LSV	Nellis	12	N3614.68 W11501.50	1864
MLF	Milford	58	N3821.62 W11300.79	4977
MMM	Mormon Mesa	90	N3646.16 W11416.65	2120
MVA	Mina	98	N3833.92 W11801.97	7860
OAL	Coale Dale	124	N3800.20 W11746.23	4800
PGS	Peach Springs	57	N3537.48 W11332.67	4754
TPH	Tonopah Muni	119	N3801.84 W11702.01	5330
TQQ	Silverbow	77	N3748.00 W11647.00	5500
UTI	St George	23	N3705.29 W11335.53	2871



RWY 3L-21R
 PCN 46 R/C/W/T
 RWY 3R-21L
 PCN 51 R/C/W/T
 2017

PAR	RWY	CAT	MINIMA		ARP	ELEV	Scale 1:35'500	
	21L	A B D E	2057 - 0.8 200 (200-0.8/1.6)	GS 3°	36° 14.060° N 115° 01.058° W	1857 [ft] 566 [m]	0 300 600 900 1200 1500 [m]	
	3R	A B D E	2057 - 0.8 200 (200-0.8/1.6)	GS 3°			0 1000 2000 3000 4000 5000 [ft]	
SRA	21R	A C D E	2257 - 1.2 350 (350-1.2/1.6)					
	3L	A C D E	2257 - 1.2 350 (350-1.2/1.6)					

RWY	TORA	TODA	ASDA	LDA	PSN	THR	ALS
21L	10051 [ft] 3063 [m]	11051 [ft] 3368 [m]	11051 [ft] 3368 [m]	10051 [ft] 3063 [m]	36°14.043' N	115°01.018' W	⊕
3R	10120 [ft] 3084 [m]	11120 [ft] 3398 [m]	11120 [ft] 3398 [m]	10120 [ft] 3084 [m]	36°13.029' N	115°02.038' W	

ATIS	NELLIS GROUND	NELLIS TOWER	NELLIS CONTROL	TACAN	ILS RWY 21L	NELLIS EAST	NELLIS WEST
270.100 MHz	275.800 121.800	327.000 132.55	317.525	LSV 12X	109.10 Mhz	384.400	385.000

DREAM FOUR DEPARTURE DREAM4 | **VALID 2014**

LAS VEGAS, NEVADA

ATIS
270.100
NELLIS GROUND
275.800
NELLIS TOWER
327.000
NELLIS CONTROL
317.525
NELLIS DEP/APP EAST
384.400
BLACKJACK
377.800

DREAM

N3710.34
W11459.53

MINTT
LAS 351/38
17,000

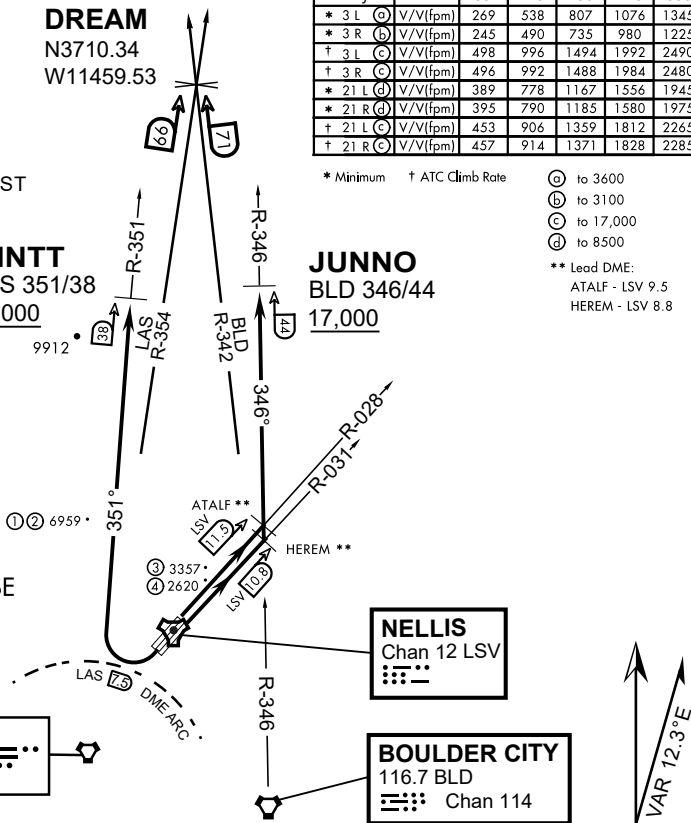
JUNNO
BLD 346/44
17,000

Rwy	Knots	60	120	180	240	300	360
* 3 L (A)	V/V(fpm)	269	538	807	1076	1345	1614
* 3 R (B)	V/V(fpm)	245	490	735	980	1225	1470
† 3 L (C)	V/V(fpm)	498	996	1494	1992	2490	2988
† 3 R (C)	V/V(fpm)	496	992	1488	1984	2480	2976
* 21 L (D)	V/V(fpm)	389	778	1167	1556	1945	2334
* 21 R (D)	V/V(fpm)	395	790	1185	1580	1975	2370
† 21 L (C)	V/V(fpm)	453	906	1359	1812	2265	2718
† 21 R (C)	V/V(fpm)	457	914	1371	1828	2285	2742

* Minimum † ATC Climb Rate

- (A) to 3600
 - (B) to 3100
 - (C) to 17,000
 - (D) to 8500
- ** Lead DME:
ATALF - LSV 9.5
HEREM - LSV 8.8

- ① 12.24 NM from Rwy 21R
- ② 12.40 NM from Rwy 21L
- ③ 5.67 NM from Rwy 3L
- ④ 5.85 NM from Rwy 3R



NOT FOR CIVIL USE

CAUTION: If unable to comply with restrictions advise ATC prior to departure.

DEPARTURE ROUTE DESCRIPTION

TAKE-OFF RWY 3L

- Fly runway heading to intercept the LSV TACAN R-028 then direct ATALF, intercept the BLD VORTAC R-346 then direct JUNNO, cross JUNNO at or above 17,000, then via assigned route.

TAKE-OFF RWY 3R

- Fly runway heading to intercept the LSV TACAN R-031 then direct HEREM, intercept the BLD VORTAC R-346 then direct JUNNO, cross JUNNO at or above 17,000, then via assigned route.

TAKE-OFF RWY 21L/R

- Turn right to intercept LAS VORTAC R-351 outbound. Remain North of LAS 7.5 DME turning Northbound. Intercept LAS R-351 between 5000 and 6000, do not proceed West of LAS R-351. Cross MINTT at or above 17,000, then via assigned route.

NOISE ABATMENT PROCEDURES: Fly acc. Nellis Noise Abatement instructions

DREAM FOUR DEPARTURE (DREAM4 • DREAM)

LAS VEGAS, NEVADA

ILS or LOC X RWY 21L

LOC I-DIQ 109.1	APCH CRS 209°	Rwy ldg 21L 10,051	21R 10,120
		TDZE 1865	1869
		Arprt Elev 1869	

AL-227 (USAF)

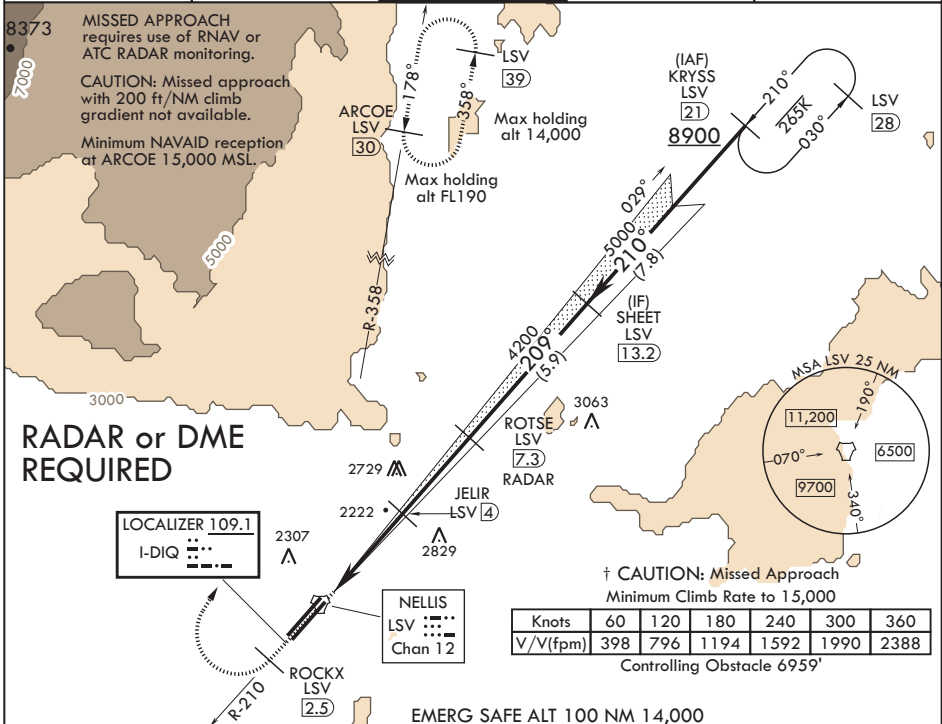
NELLIS AFB (KLSV)

⚠ * When ALS inop, increase all CAT RVR to 40, vis to 3/4 mile.
 ** When ALS inop, increase CAT AB RVR to 55, vis to 1 mile, CAT CDE vis to 1 3/4 miles.
 *** Circling not authorized E of Rwy 3R-21L.



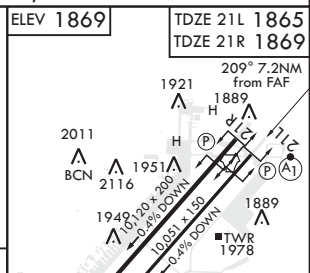
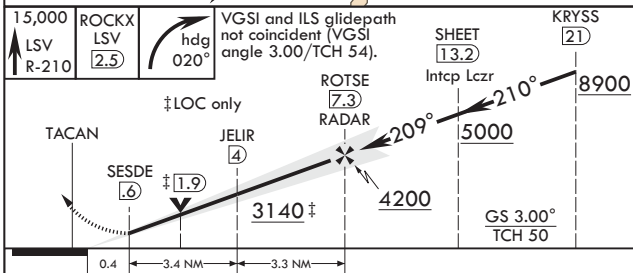
† MISSED APPROACH: Climb to 15,000, intercept LSV TACAN R-210 to 2.5 DME (ROCKX), then climbing right turn heading 020° to join LSV TACAN R-358 to ARCOE and hold, continue climb in hold to 15,000. Missed approach not for civil use.

ATIS 270.1	APP CON 124.95 273.55	TOWER 132.55 327.0	GND CON 121.8 275.8	CLNC DEL 120.9 289.4
----------------------	---------------------------------	------------------------------	-------------------------------	--------------------------------



Knots	60	120	180	240	300	360
V/f (fpm)	398	796	1194	1592	1990	2388

Controlling Obstacle 6959'



CATEGORY	A	B	C	D	E
S-ILS 21L*	2065/24		200	(200-1/2)	
S-LOC 21L**	2480/24	615 (700-1/2)	2480-1 3/4	615 (700-1 3/4)	
SIDESTEP 21R	2500-1	631 (700-1)	2500-1 3/4	631 (700-1 3/4)	
CIRCLING***	2480-1 611 (700-1)	2620-1 751 (800-1)	2620-2 1/4 751 (800-2 1/4)	2840-3 971 (1000-3)	3040-3 1171 (1200-3)

ELEV	1869	TDZE 21L	1865	TDZE 21R	1869
HIRL all Rwys ⚠ 2022					
FAF to MAP 6.7 NM					
Knots	60	90	120	150	180
Min:Sec	6:42	4:28	3:21	2:41	2:14

LAS VEGAS, NEVADA

36°14'N - 115°02'W

NELLIS AFB (KLSV)

Amdt 9 03JAN19

ILS or LOC X RWY 21L

SW-4, 05 DEC 2019 to 02 JAN 2020

SW-4, 05 DEC 2019 to 02 JAN 2020



INDIAN SPRINGS, NEVADA

TACAN INS Chan 87	APCH CRS 294 °	Rwy Idg TDZE Arprt Elev	9002 3133 3113
----------------------	-------------------	-------------------------------	----------------------

INDIAN SPRINGS AF AUX (KINS)

▽ * MISSED APPROACH: Direct INS then outbound INS **t8:2#DME** climbing to 10,000.

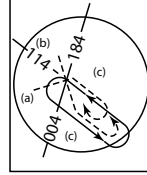
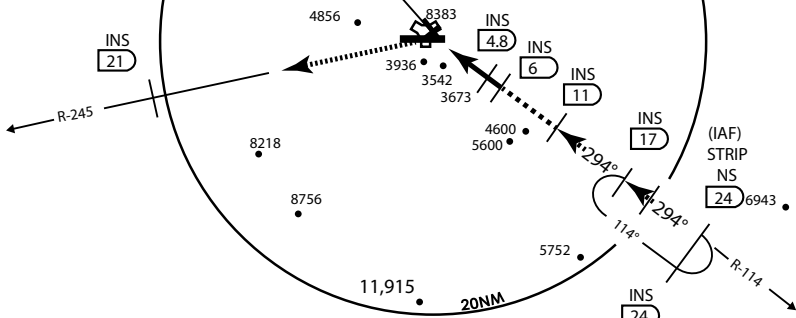
NELLIS CON -	INDIAN SPRINGS TOWER 118.30 660.60	GND CON -
-----------------	---	--------------

NOT FOR CIVIL USE

5975 •

CAUTION: Final approach course does not cross Runway centerline prior to threshold. Maneuvering right of course required prior to landing.

CREECH AFB
Chan 87 INS



Modified by vJaBoG 66 for use with DCS

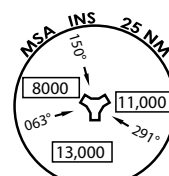
Modified by vJaBoG 66 for use with DCS

NOT FOR REAL LIFE NAVIGATION

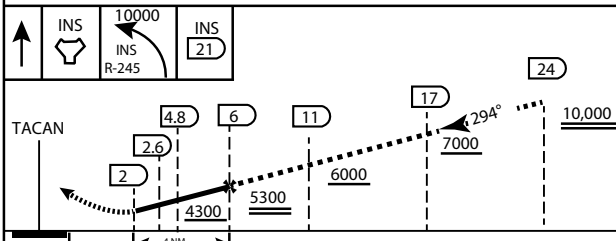
* CAUTION: Missed Approach Climb Rate to 4,700

Knots	60	120	180	240	300	360
V/V (fpm)	450	900	1350	1800	2250	2700

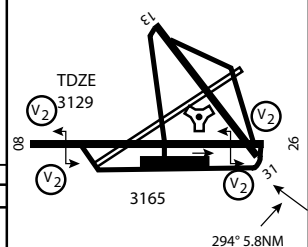
Controlling Obstacle 3936



EMERG SAFE ALT 100 NM 14,000



ELEV 3129



CATEGORY	A	B	C	D	E
S-26	3800-2 ¼	697 (700 2 ½)			3800-2 ¼ 697 (700-2 ½)
CIRCLING	NOT AUTHORIZED				

MIRL Rwy 8-26 **0**

CITY OF INDIAN, NEVADA

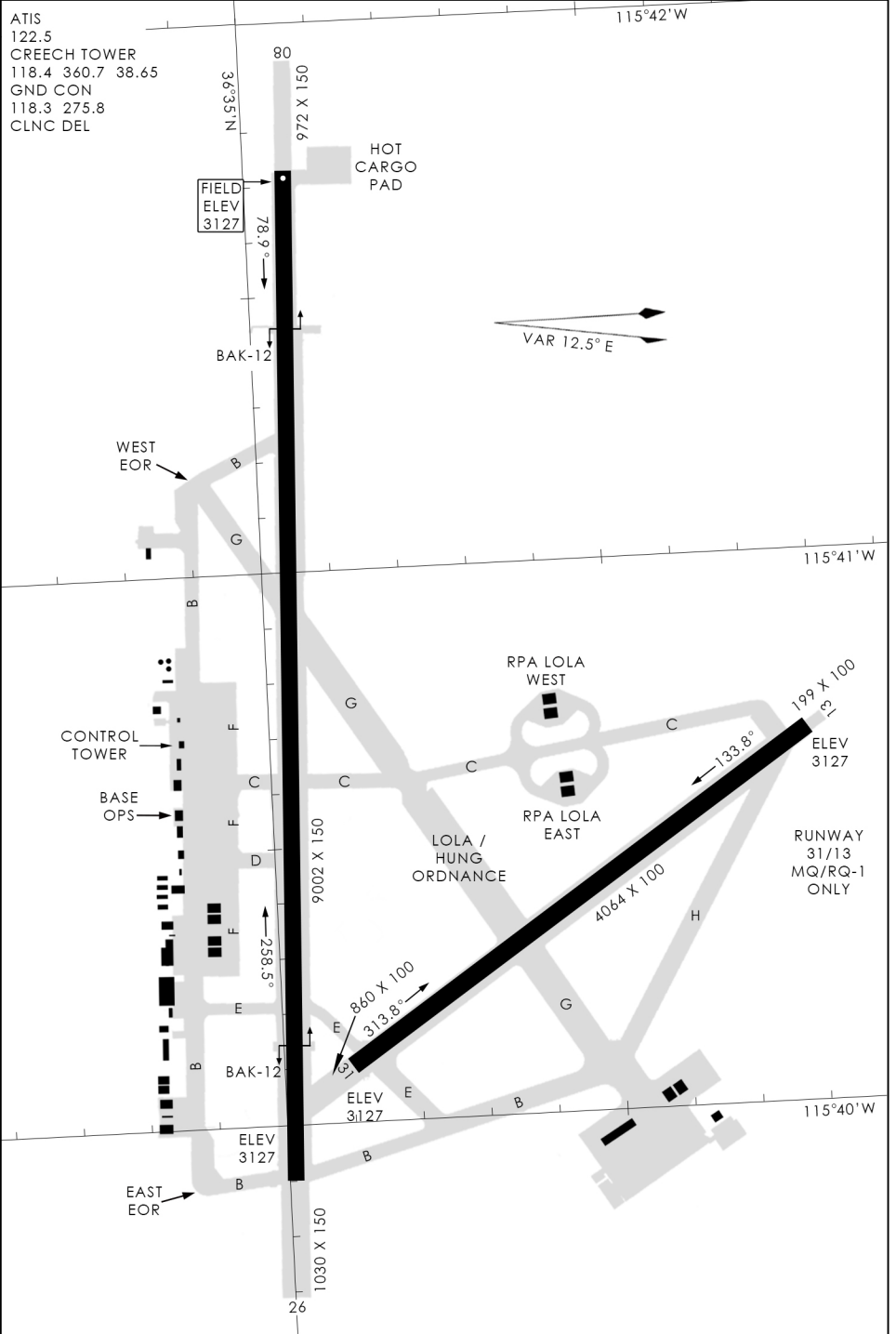
INDIAN SPRINGS AF AUX (KINS)



AIRPORT DIAGRAM

476 VFG

CREECH AFB (KINS)
INDIAN SPRINGS, NEVADA



476 VFG JAN 2019

476 VFG JAN 2019

AIRPORT DIAGRAM

INDIAN SPRINGS, NEVADA
CREECH AFB (KINS)