

**MISSION DATA CARD**

OPORD		Callsign		Mission		Date/Time		
3444/2024		Nazgul 6		Training		051944DEC24		
Task	NITE IFR & AAR					Freq		
AO						262.45		
Departure				Recovery				
FYTTR THREE				HI-TACAN Z RWY 21L				
#	Callsign		Pilot		IFF	TCN	LSR	NET

**LOADOUT**

A/A		GUN	
A/G		CHF	
POD		FLR	
TKS		FUEL	

**TOLD**

	Takeoff	Target	Joker	Bingo	Land
FUEL	22588				

**AIRBASES**

	Name	TCN	ATIS	GND	TWR	RWY	Elev	ILS
Dep	Nellis AFB	12X	270.1	275.8	327.0	21L	1850	109.1
Arr	Nellis AFB	12X	270.1	275.8	327.0	21L	1850	109.1
Div	Creech AFB	87X	290.45	275.8	360.6			

**FLIGHTPLAN**

#	Name	Navaid/Coords/DME	ALT	TOT
1	FYTTR	N36 21 26.400 W115 41 28.200	1500	
2	BTY	N36 48 02.099 W116 44 51.529	1500	
3	Tonopah Test Range	N37 47 02 W116 46 23	1500	
4	TPH	N38 01 50.401 W117 02 00.600	1500	
5	ILC	N38 15 00.601 W114 23 39.001	1500	
6	ARCOE	N36 44 15.600 W114 55 01.200	1500	
7	Nellis AFB	N36 13 32 W115 02 37	1500	

**SUPPORT****Tanker**

Callsign	TCN	Freq	ALT	TAS
SHELL 2	115Y	360.8	FL250	430
Pos	AR-635: MLF 260/127 (N3831 W11542)			

## OTHER FLIGHTS

Callsign	Mission	Airframe	Freq	TCN	Grpld	Laser
Raptor 2	Training	1x F-16C	134.0	1/64		162X
AO		Task	IFR Night, AAR			
Edelweiss 1	Training	2x F/A-18C	264.15	12/75	1	171X
AO		Task	IFR-Training, AAR			
Outlaw 6	Training	2x AH-64D	133.5	1/64	9	171X
AO	Range 74	Task	Strike R74			
Panther 7	Training	2x F/A-18C	264.15	12/75	1	171X
AO		Task	IFR-Training, AAR			
Edelweiss 2	Training	2x F-16C	264.25	1/64		172X
AO		Task				
T-Rex 1	Training	4x A-10C	132.15	1/64	25	165X
AO	R64	Task	Bomb Training			

**RADIO CHANNELS**

#	Freq	Name
1		Flight/Squadron specific
2	289.4	Nellis Clearance Delivery
3	275.8	Nellis Ground
4	327.0	Nellis Tower
5	385.4	Nellis Approach/Departure West
6	273.55	Nellis Approach/Departure East
7	317.525	Nellis Control -- Sally
8	254.4	Nellis Control-- Lee
9	305.6	SOF Bullseye
10	343.725	EMERGENCY SINGLE FRQ
11	270.1	Nellis ATIS
12	360.625	Creech AFB Tower
13	250.1	HAVE QUICK 13
14	251.1	HAVE QUICK 14
15	252.1	HAVE QUICK 15
16	377.8	Blackjack
17	265.0	KC-135 AR-641A
18	360.8	KC-135MPRS AR-635
19	319.8	KC-135MPRS AR-625
20	300.05	KC-135 AR-231V

**RAMROD**

0	1	2	3	4	5	6	7	8	9
D	I	S	B	A	R	M	E	N	T

**KTC 1400 C**

	0	1	2	3	4	5	6	7	8	9
A	XALT	PME	VJQ	CR	SY	NUI	WH	GK	FB	OD
B	JSQO	DRY	CAK	FV	BW	XMG	NP	EL	HT	IU
C	RXLG	CWT	NKJ	UF	PH	OBV	DY	SE	QM	AI
D	TWKF	CXV	UGJ	IM	BO	SRN	AL	EH	PQ	DY
E	ACKD	UEP	MBY	JQ	GR	WXF	VS	TO	NI	LH
F	CUFM	IWN	EQG	DR	LH	TBP	VO	AK	JX	YS
G	APXG	TKQ	EVL	SR	UC	ION	HF	JM	BD	WY
H	SAEY	CGD	ORM	TN	JX	VIU	BL	PF	WQ	HK
I	SQYR	AXB	DCT	IE	GO	WKL	UV	HP	NJ	MF
J	MSAV	IKW	QGT	LN	UD	OBC	YH	PJ	XE	FR
K	FWXT	NLY	BCI	RK	PE	ADJ	QM	GH	SV	OU
L	JNRQ	ILE	THO	BF	SY	KCM	PW	GA	UD	VX
M	OUAK	EJH	ITM	XV	WF	LND	GR	YC	BP	SQ
N	CQLH	AJU	TXD	IF	NW	RME	OV	BG	PY	SK
O	IHRD	KMJ	CSU	AX	LT	WNP	VG	FB	EY	OQ
P	WFEB	OXI	GPN	KV	TM	YUC	AQ	LS	DR	HJ
Q	CMLD	JUN	KAQ	TO	VW	GBP	IS	XH	RE	FY
R	FAOI	SUY	THK	MP	QD	JXL	WV	NC	GE	RB
S	XDIP	UNB	MGQ	OY	RS	TFE	VK	LH	AW	CJ
T	WCIO	XBN	DAV	RG	MF	YQL	UT	HS	EP	KJ
U	OBXH	NRP	QMF	CS	AK	EVI	LT	WD	JG	YU
V	FPTQ	NOD	JGY	IU	VR	SCH	AL	BW	MK	EX
W	AIQJ	URT	SHC	MO	YD	FBX	WG	KV	PE	LN
X	YBDQ	RPE	FJU	OX	AI	WMC	NL	TK	GH	VS
Y	OFJS	WQM	UBI	AN	EL	TDG	YP	CX	KV	HR

**NAVAIDS**

<b>Id</b>	<b>Name</b>	<b>Channel</b>	<b>Position</b>	<b>Elevation</b>
BCE	Bryce Canyon	75	N3741.35 W11218.23	9040
BIH	Bishop	33	N3722.62 W11821.99	4114
BLD	Boulder	114	N3559.75 W11451.82	3650
BTY	Beatty	94	N3648.54 W11644.86	2925
CDC	Cedar City	120	N3747.24 W11304.90	5463
DAG	Daggett	79	N3457.75 W11634.69	1760
EED	Needles	99	N3445.96 W11428.43	650
GFS	Goffs	91	N3507.87 W11510.59	4019
GRL	Groom Lake	18	N3713.91 W11548.16	4475
HEC	Hector	74	N3447.83 W11627.78	1854
ILC	Wilson Creek	110	N3815.02 W11423.65	9318
INS	Creech AFB	87	N3635.20 W11540.12	3101
LAS	McCarran Intl	116	N3604.78 W11509.59	2142
LSV	Nellis	12	N3614.68 W11501.50	1864
MLF	Milford	58	N3821.62 W11300.79	4977
MMM	Mormon Mesa	90	N3646.16 W11416.65	2120
MVA	Mina	98	N3833.92 W11801.97	7860
OAL	Coale Dale	124	N3800.20 W11746.23	4800
PGS	Peach Springs	57	N3537.48 W11332.67	4754
TPH	Tonopah Muni	119	N3801.84 W11702.01	5330
TQQ	Silverbow	77	N3748.00 W11647.00	5500
UTI	St George	23	N3705.29 W11335.53	2871



PCN 21-21R  
PCN 46 R/C/W/T  
RWY 3R-21L  
PCN 51 R/C/W/T

PAR	RWY	CAT	MINIMA	ARP	ELEV	Scale
	21L	A B D E	2057 - 0.8 200 (200-0.8/1.6) GS 3°	36° 14.060° N 115° 01.058° W	1857 [ft] 566 [m]	0 300 600 900 1200 1500 [m]
	3R	A B D E	2057 - 0.8 200 (200-0.8/1.6) GS 3°			0 1000 2000 3000 4000 5000 [ft]
SRA	21R	A C D E	2257 - 1.2 350 (350-1.2/1.6)			
	3L	A C D E	2257 - 1.2 350 (350-1.2/1.6)			

RWY	TORA	TODA	ASDA	LDA	PSN	THR	ALS
21L	10051 [ft] 3063 [m]	11051 [ft] 3368 [m]	11051 [ft] 3368 [m]	10051 [ft] 3063 [m]	36°14.043' N	115°01.018' W	⊕
3R	10120 [ft] 3084 [m]	11120 [ft] 3398 [m]	11120 [ft] 3398 [m]	10120 [ft] 3084 [m]	36°13.029' N	115°02.038' W	

ATIS	NELLIS GROUND	NELLIS TOWER	NELLIS CONTROL	TACAN	ILS RWY 21L	NELLIS EAST	NELLIS WEST
270.100 MHz	275.800   121.800	327.000   132.55	317.525	LSV 12X	109.10 Mhz	384.400	385.000



**FYTTR THREE DEPARTURE** IFR CHART | VALID 2014 LAS VEGAS, NEVADA

ATIS  
270.100  
NELLIS GROUND  
275.800  
NELLIS TOWER  
327.000  
NELLIS CONTROL  
317.525  
NELLIS DEP/APP EAST  
384.400  
BLACKJACK  
377.800



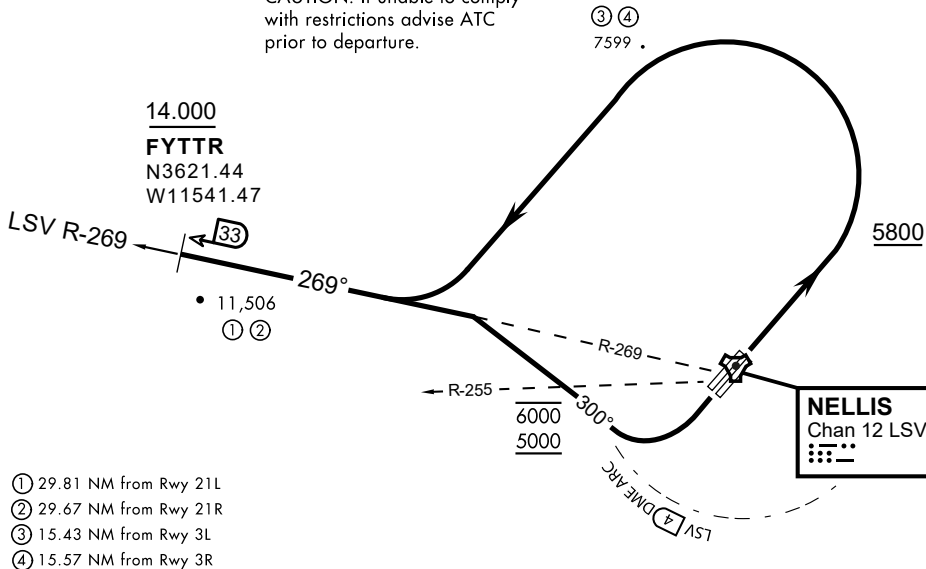
Rwy	Knots	60	120	180	240	300	360
3L (a)	V/V(fpm)	394	788	1182	1576	1970	2364
3R (a)	V/V(fpm)	392	784	1176	1568	1960	2352
21L (b)	V/V(fpm)	388	776	1164	1552	1940	2328
21R (b)	V/V(fpm)	390	780	1170	1560	1950	2340

Minimum Climb Rate

(a) to 9300

(b) to 13 500

CAUTION: If unable to comply with restrictions advise ATC prior to departure.



- ① 29.81 NM from Rwy 21L
- ② 29.67 NM from Rwy 21R
- ③ 15.43 NM from Rwy 3L
- ④ 15.57 NM from Rwy 3R

**DEPARTURE ROUTE DESCRIPTION**

TAKEOFF RWY 3L/R

- Fly runway heading until reaching 5,800'.
- Then climbing left turn to intercept LSV TACAN R-269 outbound.
- Cross FYTTR at or above 14,000' or as assigned, then via assigned route.

TAKEOFF RWY 21L/21R

- Turn right to intercept LSV TACAN R-269 outbound.
- Remain within LSV 4 DME until joining LSV R-269
- Cross R-255 between 5,000' and 6,000'.
- Cross FYTTR at or above 14,000' or as assigned, then via assigned route.

**NOISE ABATEMENT PROCEDURES:**

Fly according Nellis Noise Abatement instructions as published

# HI-TACAN Z RWY 21L

TACAN LSV Chan 12	APCH CRS 210°	Rwy ldg 21L 10,051 TDZE 1865 Arprt Elev 1869	Rwy ldg 21R 10,120 TDZE 1869
-------------------	---------------	--	------------------------------

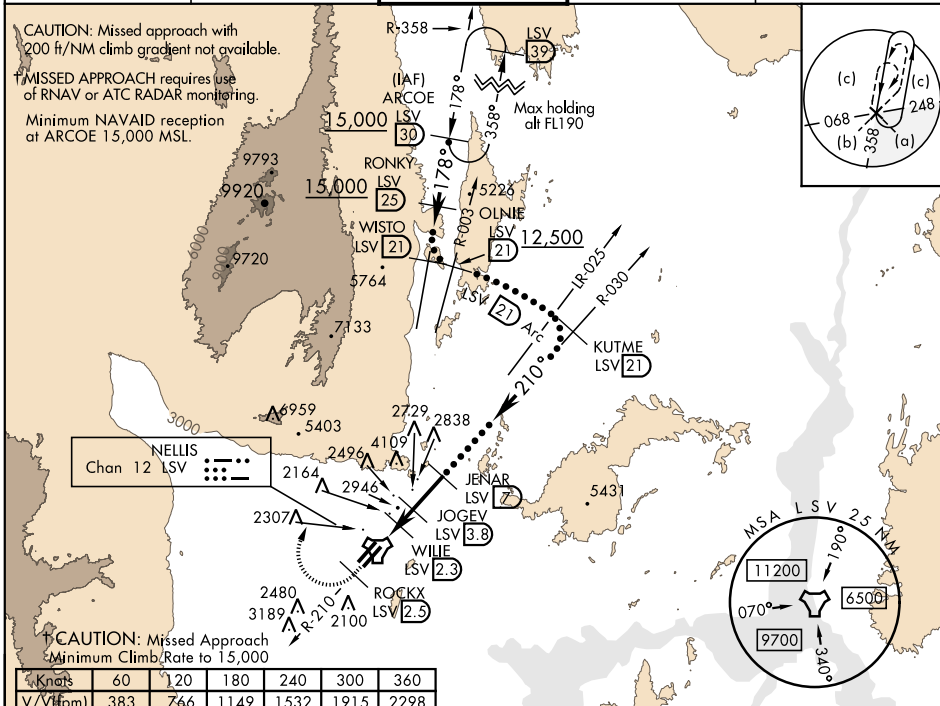
JAL-227 [USAF] NELLIS AFB (KLSV)

▼\* When ALS inop, increase CAT CDE vis to 1 1/4 miles.  
 \*\* Circling not authorized E of Rwy 3R-21L.



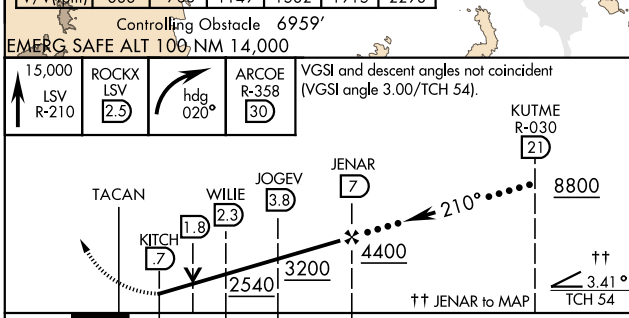
† MISSED APPROACH: Climb to 15,000, intercept LSV TACAN R-210 to 2.5 DME (ROCKX), then climbing right turn heading 020° to join LSV R-358 to ARCOE and hold, continue climb in hold to 15,000. Missed approach not for civil use.

ATIS 270.1	NELLIS APP CON 124.95 273.55	NELLIS TOWER 132.55 327.0	GND CON 121.8 275.8	CLNC DEL 120.9 289.4
------------	------------------------------	---------------------------	---------------------	----------------------

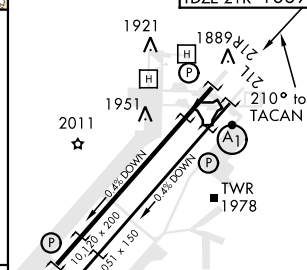


SW-4, 05 DEC 2019 to 02 JAN 2020

SW-4, 05 DEC 2019 to 02 JAN 2020



ELEV 1869	TDZE 21L 1865
	TDZE 21R 1869



CATEGORY	C	D	E
S-21L *	2460-1 1/4	595 (600-1 1/4)	
SIDESTEP 21R	2460-1	591 (600-1)	
CIRCLING **	2620-2 1/4 751 (800-2 1/4)	2840-3 971 (1000-3)	3040-3 1171 (1200-3)

HIRL all Rwy

# HI-TACAN Z RWY 21L



INDIAN SPRINGS, NEVADA

TACAN INS Chan 87	APCH CRS 065°	Rwy Idg 9002
		TDZE 3133
		Arpt Elev 3113

INDIAN SPRINGS AF AUX (KINS)

**NOT FOR CIVIL USE**

\* MISSED APPROACH: Straight ahead to INS TACAN, intercept INS R-outbound, cross 17 DME at or above 9500, then direkt KSV TACAN

114

NELLIS CON

CREECH AFB TOWER  
118.30 60.60

GND CON

**NOT FOR CIVIL USE**

FOR USE UNDER BASIC VFR  
WEATHER MINIMUMS ONLY

PILOT IS RESPONSIBLE FOR TERRAIN/OBSTACLE AVOIDANCE AND APPROPRIATE VFR CLOUD CLEARANCE FOR ALL

CAUTION: Descent gradients are greater than allowed under standard TERPS criteria and inbound course does not meet straight-in criteria

CAUTION: Final approach course crosses Runway centerline at MIDFIELD. Maneuvering left of course required prior to landing. Do not Maneuver farther north than the INS R- 258

Modified by viaBog 66 for use with DCS  
NOT FOR REAL LIFE NAVIGATION

Modified by viaBog 66 for use with DCS  
NOT FOR REAL LIFE NAVIGATION



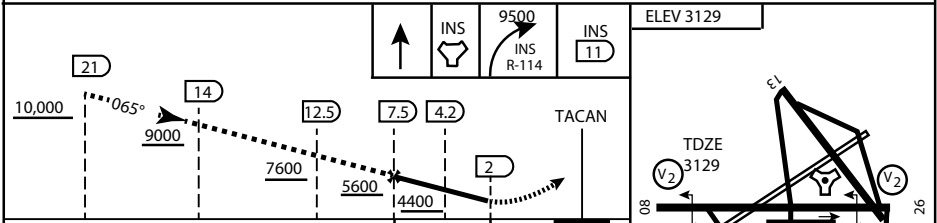
\* CAUTION: Missed Approach Climb Rate to 4,700

Knots	60	120	180	240	300
V/V (fpm)	230	460	690	920	1150

Controlling Obstacle

HIGH ALTITUDE FACILITIES

EMERG SAFE ALT 100 NM 14,000



CATEGORY	A	B	C	D	E
S-8	3760-1 1/2	627 (700-1 1/2)	3760-1 3/4 627 (700-1 3/4)	3760-2 627 (700-2)	3760-2 1/4 627 (700-2 1/4)
CIRCLING	NOT AUTHORIZED				

ELEV 3129

3165

065° 6.3NM from FAF

MIRL Rwy 8-26

CITY OF INDIAN, NEVADA

INDIAN SPRINGS AF AUX (KINS)

(FOR DAY VFR USE ONLY)



# AIRPORT DIAGRAM

476 VFG

CREECH AFB (KINS)  
INDIAN SPRINGS, NEVADA

ATIS  
 122.5  
 CREECH TOWER  
 118.4 360.7 38.65  
 GND CON  
 118.3 275.8  
 CLNC DEL

115°42'W

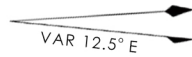
FIELD  
 ELEV  
 3127

80

972 X 150

HOT  
CARGO  
PAD

BAK-12

  
 VAR 12.5° E

WEST  
EOR

115°41'W

476 VFG JAN 2019

CONTROL  
 TOWER  
 BASE  
 OPS

RPA LOLA  
WEST

RPA LOLA  
EAST

LOLA /  
HUNG  
ORDNANCE

RUNWAY  
 31/13  
 MQ/RQ-1  
 ONLY

9002 X 150

258.5°

860 X 100

313.8°

4064 X 100

199 X 100

13

ELEV  
3127

EAST  
EOR

BAK-12

ELEV  
3127

1030 X 150

26

115°40'W

476 VFG JAN 2019

# AIRPORT DIAGRAM

INDIAN SPRINGS, NEVADA  
CREECH AFB (KINS)