

**MISSION DATA CARD**

OPORD		Callsign		Mission		Date/Time		
3443/2024		Outlaw 6		Training		052000DEC24		
Task	Strike R74					Freq		
AO	Range 74					133.5		
Departure				Recovery				
HELICOPTER DEP								
#	Callsign		Pilot		IFF	TCN	LSR	NET
-1	Outlaw 6-1		Hudson/Warblade		5761	1Y	1711	09/01
-2	Outlaw 6-2		Mütze		5762	64Y	1712	09/02

**LOADOUT**

A/A						GUN	25% HEDP
A/G	10xAGM114K, 2xAGM114L					CHF	30
POD						FLR	60
TKS						FUEL	75%

**TOLD**

	Takeoff	Target	Joker	Bingo	Land
FUEL	1884				

**AIRBASES**

	Name	TCN	ATIS	GND	TWR	RWY	Elev	ILS
Dep	Nellis AFB	12X	270.1	275.8	327.0	21L	1850	109.1

**FLIGHTPLAN**

#	Name	Navaid/Coords/DME	ALT	TOT
1	RP	11S NB 6153 3206		
2	BP	11S NB 6141 4210		
3	T01	11S NB 6644 4973		
4	T02	11S NB 6806 4928		
5	LZ	11S NB 6098 0645		

**COMMS**

Radio	Usage
1	133.5
2	377.8
3	35.35

## OTHER FLIGHTS

Callsign	Mission	Airframe	Freq	TCN	Grpld	Laser
Raptor 2	Training	1x F-16C	134.0	1/64		162X
AO		Task	IFR Night, AAR			
Edelweiss 1	Training	2x F/A-18C	264.15	12/75	1	171X
AO		Task	IFR-Training, AAR			
Nazgul 6	Training	4x F-15E	262.45	1/64		156X
AO		Task	NITE IFR & AAR			
Panther 7	Training	2x F/A-18C	264.15	12/75	1	171X
AO		Task	IFR-Training, AAR			
Edelweiss 2	Training	2x F-16C	264.25	1/64		172X
AO		Task				
T-Rex 1	Training	4x A-10C	132.15	1/64	25	165X
AO	R64	Task	Bomb Training			

**RADIO CHANNELS**

#	Freq	Name
1		Flight/Squadron specific
2	289.4	Nellis Clearance Delivery
3	275.8	Nellis Ground
4	327.0	Nellis Tower
5	385.4	Nellis Approach/Departure West
6	273.55	Nellis Approach/Departure East
7	317.525	Nellis Control -- Sally
8	254.4	Nellis Control-- Lee
9	305.6	SOF Bullseye
10	343.725	EMERGENCY SINGLE FRQ
11	270.1	Nellis ATIS
12	360.625	Creech AFB Tower
13	250.1	HAVE QUICK 13
14	251.1	HAVE QUICK 14
15	252.1	HAVE QUICK 15
16	377.8	Blackjack
17	265.0	KC-135 AR-641A
18	360.8	KC-135MPRS AR-635
19	319.8	KC-135MPRS AR-625
20	300.05	KC-135 AR-231V

**RAMROD**

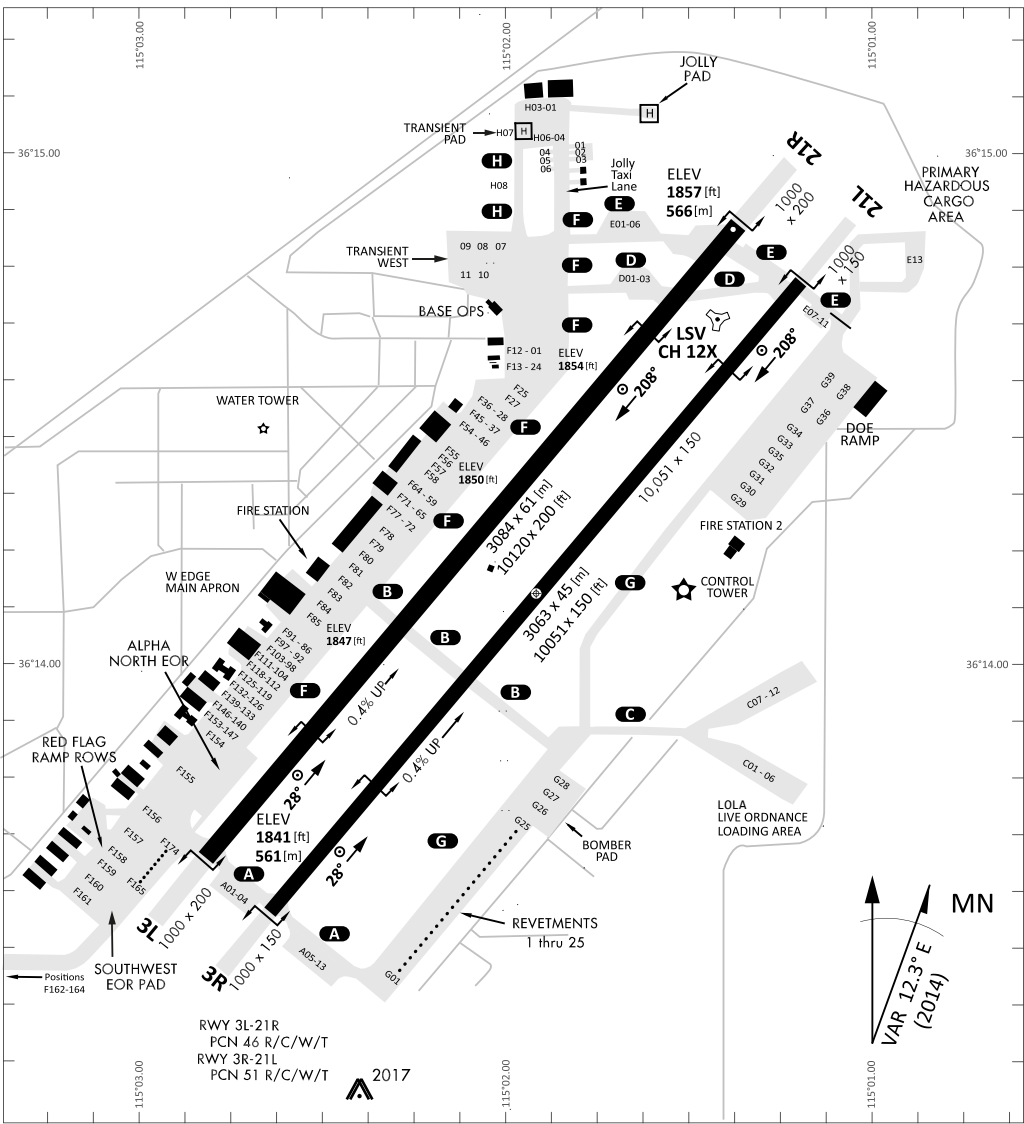
0	1	2	3	4	5	6	7	8	9
D	I	S	B	A	R	M	E	N	T

**KTC 1400 C**

	0	1	2	3	4	5	6	7	8	9
A	XALT	PME	VJQ	CR	SY	NUI	WH	GK	FB	OD
B	JSQO	DRY	CAK	FV	BW	XMG	NP	EL	HT	IU
C	RXLG	CWT	NKJ	UF	PH	OBV	DY	SE	QM	AI
D	TWKF	CXV	UGJ	IM	BO	SRN	AL	EH	PQ	DY
E	ACKD	UEP	MBY	JQ	GR	WXF	VS	TO	NI	LH
F	CUFM	IWN	EQG	DR	LH	TBP	VO	AK	JX	YS
G	APXG	TKQ	EVL	SR	UC	ION	HF	JM	BD	WY
H	SAEY	CGD	ORM	TN	JX	VIU	BL	PF	WQ	HK
I	SQYR	AXB	DCT	IE	GO	WKL	UV	HP	NJ	MF
J	MSAV	IKW	QGT	LN	UD	OBC	YH	PJ	XE	FR
K	FWXT	NLY	BCI	RK	PE	ADJ	QM	GH	SV	OU
L	JNRQ	ILE	THO	BF	SY	KCM	PW	GA	UD	VX
M	OUAK	EJH	ITM	XV	WF	LND	GR	YC	BP	SQ
N	CQLH	AJU	TXD	IF	NW	RME	OV	BG	PY	SK
O	IHRD	KMJ	CSU	AX	LT	WNP	VG	FB	EY	OQ
P	WFEB	OXI	GPN	KV	TM	YUC	AQ	LS	DR	HJ
Q	CMLD	JUN	KAQ	TO	VW	GBP	IS	XH	RE	FY
R	FAOI	SUY	THK	MP	QD	JXL	WV	NC	GE	RB
S	XDIP	UNB	MGQ	OY	RS	TFE	VK	LH	AW	CJ
T	WCIO	XBN	DAV	RG	MF	YQL	UT	HS	EP	KJ
U	OBXH	NRP	QMF	CS	AK	EVI	LT	WD	JG	YU
V	FPTQ	NOD	JGY	IU	VR	SCH	AL	BW	MK	EX
W	AIQJ	URT	SHC	MO	YD	FBX	WG	KV	PE	LN
X	YBDQ	RPE	FJU	OX	AI	WMC	NL	TK	GH	VS
Y	OFJS	WQM	UBI	AN	EL	TDG	YP	CX	KV	HR

## NAVAIDS

Id	Name	Channel	Position	Elevation
BCE	Bryce Canyon	75	N3741.35 W11218.23	9040
BIH	Bishop	33	N3722.62 W11821.99	4114
BLD	Boulder	114	N3559.75 W11451.82	3650
BTY	Beatty	94	N3648.54 W11644.86	2925
CDC	Cedar City	120	N3747.24 W11304.90	5463
DAG	Daggett	79	N3457.75 W11634.69	1760
EED	Needles	99	N3445.96 W11428.43	650
GFS	Goffs	91	N3507.87 W11510.59	4019
GRL	Groom Lake	18	N3713.91 W11548.16	4475
HEC	Hector	74	N3447.83 W11627.78	1854
ILC	Wilson Creek	110	N3815.02 W11423.65	9318
INS	Creech AFB	87	N3635.20 W11540.12	3101
LAS	McCarran Intl	116	N3604.78 W11509.59	2142
LSV	Nellis	12	N3614.68 W11501.50	1864
MLF	Milford	58	N3821.62 W11300.79	4977
MMM	Mormon Mesa	90	N3646.16 W11416.65	2120
MVA	Mina	98	N3833.92 W11801.97	7860
OAL	Coale Dale	124	N3800.20 W11746.23	4800
PGS	Peach Springs	57	N3537.48 W11332.67	4754
TPH	Tonopah Muni	119	N3801.84 W11702.01	5330
TQQ	Silverbow	77	N3748.00 W11647.00	5500
UTI	St George	23	N3705.29 W11335.53	2871



RWY 3L-21R  
 PCN 46 R/C/W/T  
 RWY 3R-21L  
 PCN 51 R/C/W/T  
 2017

PAR	RWY	CAT	MINIMA		ARP	ELEV	Scale 1:35'500	
	21L	A B D E	2057 - 0.8 200 (200-0.8/1.6)	GS 3°	36° 14.060° N 115° 01.058° W	1857 [ft] 566 [m]	0 300 600 900 1200 1500 [m]	
	3R	A B D E	2057 - 0.8 200 (200-0.8/1.6)	GS 3°			0 1000 2000 3000 4000 5000 [ft]	
SRA	21R	A C D E	2257 - 1.2 350 (350-1.2/1.6)					
	3L	A C D E	2257 - 1.2 350 (350-1.2/1.6)					

RWY	TORA	TODA	ASDA	LDA	PSN	THR	ALS
21L	10051 [ft] 3063 [m]	11051 [ft] 3368 [m]	11051 [ft] 3368 [m]	10051 [ft] 3063 [m]	36°14.043' N	115°01.018' W	⊕
3R	10120 [ft] 3084 [m]	11120 [ft] 3398 [m]	11120 [ft] 3398 [m]	10120 [ft] 3084 [m]	36°13.029' N	115°02.038' W	

ATIS	NELLIS GROUND	NELLIS TOWER	NELLIS CONTROL	TACAN	ILS RWY 21L	NELLIS EAST	NELLIS WEST
270.100 MHz	275.800   121.800	327.000   132.55	317.525	LSV 12X	109.10 Mhz	384.400	385.000

# HELICOPTER ARR/DEP VAD-CHART | VALID 2014

**NELLIS AFB (KLSV)**  
LAS VEGAS, NEVADA

ATIS  
270.100  
NELLIS GROUND  
275.800  
NELLIS TOWER  
327.000  
BLACKJACK  
377.800

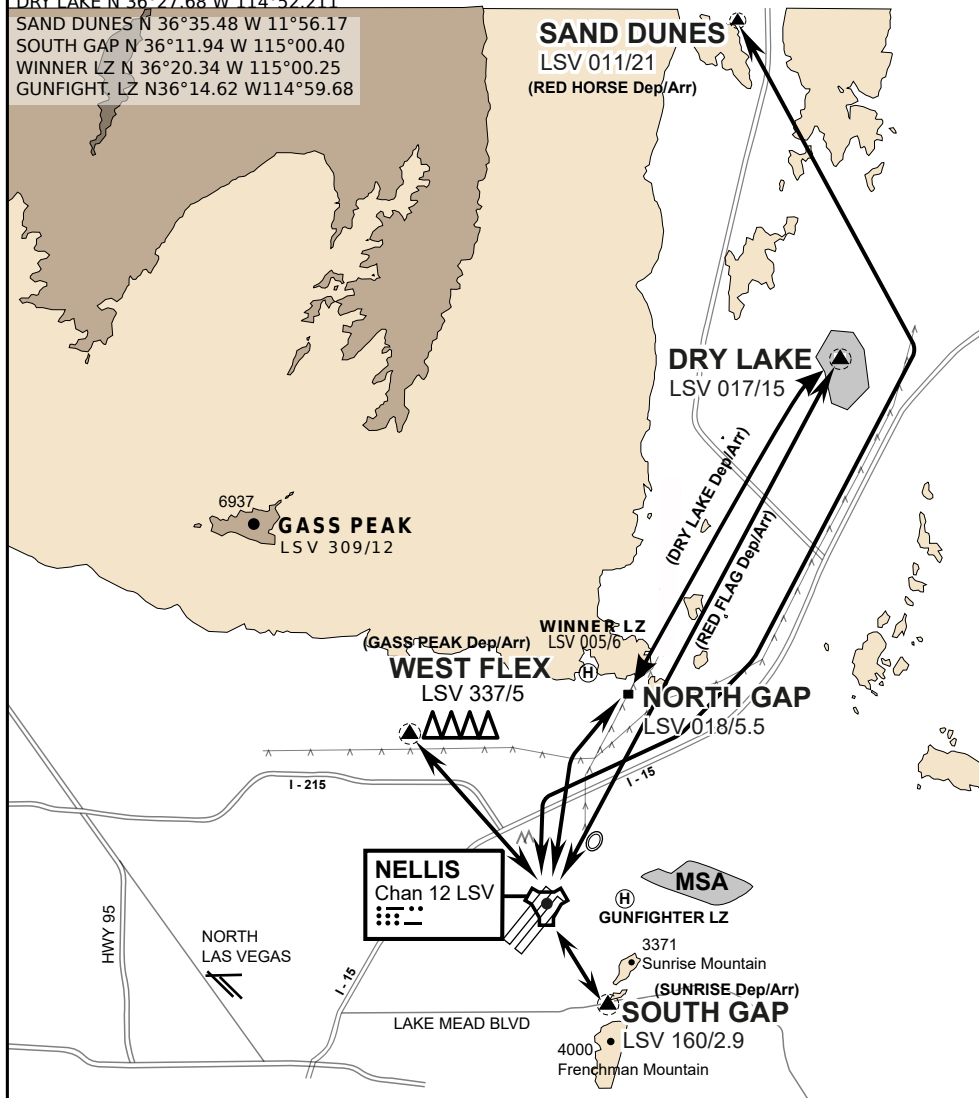
CAUTION: If unable to comply with restrictions advise ATC prior to departure.

## VMC ONLY

if below WX Minima request SVFR



JOLLY PAD N 36°15.08 W 115°01.65  
WEST FLEX N 36°18.64 W 115°08.00  
NORTH GAP N 36°20.00 W 114°59.30  
DRY LAKE N 36°27.68 W 114°52.211  
SAND DUNES N 36°35.48 W 11°56.17  
SOUTH GAP N 36°11.94 W 115°00.40  
WINNER LZ N 36°20.34 W 115°00.25  
GUNFIGHT, LZ N36°14.62 W114°59.68



## HELICOPTER ARRIVAL AND DEPARTURES ROUTES

v.110 22APR20