

**MISSION DATA CARD**

OPORD		Callsign		Mission		Date/Time		
3441/2024		Raptor 2		Training		052000DEC24		
Task	IFR Night, AAR					Freq		
AO						134.0		
Departure				Recovery				
MORMON MESA FOUR				HI-TACAN Y RWY 21L				
#	Callsign		Pilot		IFF	TCN	LSR	NET
-1	Raptor 2-1		Butcher		1621	1Y	1621	

**LOADOUT**

A/A	2xA120C				GUN	100% HEI-T	
A/G					CHF	120	
POD	A184L				FLR	0	
TKS	2xFT300				FUEL	50%	

**TOLD**

	Takeoff	Target	Joker	Bingo	Land
FUEL	7587				

**AIRBASES**

	Name	TCN	ATIS	GND	TWR	RWY	Elev	ILS
Dep	Nellis AFB	12X	270.1	275.8	327.0	21L	1850	109.1
Arr	Nellis AFB	12X	270.1	275.8	327.0	21L	1850	109.1
Div	Nellis AFB	12X	270.1	275.8	327.0	21L	1850	109.1

**FLIGHTPLAN**

#	Name	Navaid/Coords/DME	ALT	TOT
1	RYAAN	N36 20.357 W115 05.437	7000	
2	ZINAX	N36 23.424 W114 51.051	7000	
3	MMM	N36 46.157 W114 16.648	23000	
4	Peach Springs	N35 37.480 W113 32.670	23000	
5	Needles	N34 45.960 W114 28.430	24000	
6	UNPAS	N35 17.970 W114 38.510	24000	
7	GOFFS	N35 07.870 W115 10.590	24000	
8	HIDEN	N36 01.740 W116 00.610	24000	
9	Creech	N36 35.208 W115 40.961	23000	
10	SECRT	N36 20.166 W115 16.087	15000	
11	HULPU	N36 24.346 W114 50.729	13000	
12	JENID	N36 21.300 W116 51.500	4400	
13	LUCIL	N35 58.788 W115 18.480	11000	
14	ENGLA	N36 08.630 W115 07.985	3900	

**COMMS**

Radio	Usage
1	ATIS 270.10; GND 275.80; TWR 327.00; BJ 377.80;

## NOTES

Bei Start von der RWY21 über WP1 dann WP3. Landen auf RWY03 von Creech dct WP13

**SUPPORT****Tanker**

Callsign	TCN	Freq	ALT	TAS
TEXACO 2	95Y	289.7	FL220	420
Pos	Pegasus.1: CDC 166/102 (N3730 W11440)			

**OTHER FLIGHTS**

Callsign	Mission	Airframe	Freq	TCN	Grpld	Laser
Edelweiss 1	Training	2x F/A-18C	264.15	12/75	1	171X
AO		Task	IFR-Training, AAR			
Outlaw 6	Training	2x AH-64D	133.5	1/64	9	171X
AO	Range 74	Task	Strike R74			
Nazgul 6	Training	4x F-15E	262.45	1/64		156X
AO		Task	NITE IFR & AAR			
Panther 7	Training	2x F/A-18C	264.15	12/75	1	171X
AO		Task	IFR-Training, AAR			
Edelweiss 2	Training	2x F-16C	264.25	1/64		172X
AO		Task				
T-Rex 1	Training	4x A-10C	132.15	1/64	25	165X
AO	R64	Task	Bomb Training			

**RADIO CHANNELS**

#	Freq	Name
1		Flight/Squadron specific
2	289.4	Nellis Clearance Delivery
3	275.8	Nellis Ground
4	327.0	Nellis Tower
5	385.4	Nellis Approach/Departure West
6	273.55	Nellis Approach/Departure East
7	317.525	Nellis Control -- Sally
8	254.4	Nellis Control-- Lee
9	305.6	SOF Bullseye
10	343.725	EMERGENCY SINGLE FRQ
11	270.1	Nellis ATIS
12	360.625	Creech AFB Tower
13	250.1	HAVE QUICK 13
14	251.1	HAVE QUICK 14
15	252.1	HAVE QUICK 15
16	377.8	Blackjack
17	265.0	KC-135 AR-641A
18	360.8	KC-135MPRS AR-635
19	319.8	KC-135MPRS AR-625
20	300.05	KC-135 AR-231V

**RAMROD**

0	1	2	3	4	5	6	7	8	9
D	I	S	B	A	R	M	E	N	T

**KTC 1400 C**

	0	1	2	3	4	5	6	7	8	9
A	XALT	PME	VJQ	CR	SY	NUI	WH	GK	FB	OD
B	JSQO	DRY	CAK	FV	BW	XMG	NP	EL	HT	IU
C	RXLG	CWT	NKJ	UF	PH	OBV	DY	SE	QM	AI
D	TWKF	CXV	UGJ	IM	BO	SRN	AL	EH	PQ	DY
E	ACKD	UEP	MBY	JQ	GR	WXF	VS	TO	NI	LH
F	CUFM	IWN	EQG	DR	LH	TBP	VO	AK	JX	YS
G	APXG	TKQ	EVL	SR	UC	ION	HF	JM	BD	WY
H	SAEY	CGD	ORM	TN	JX	VIU	BL	PF	WQ	HK
I	SQYR	AXB	DCT	IE	GO	WKL	UV	HP	NJ	MF
J	MSAV	IKW	QGT	LN	UD	OBC	YH	PJ	XE	FR
K	FWXT	NLY	BCI	RK	PE	ADJ	QM	GH	SV	OU
L	JNRQ	ILE	THO	BF	SY	KCM	PW	GA	UD	VX
M	OUAK	EJH	ITM	XV	WF	LND	GR	YC	BP	SQ
N	CQLH	AJU	TXD	IF	NW	RME	OV	BG	PY	SK
O	IHRD	KMJ	CSU	AX	LT	WNP	VG	FB	EY	OQ
P	WFEB	OXI	GPN	KV	TM	YUC	AQ	LS	DR	HJ
Q	CMLD	JUN	KAQ	TO	VW	GBP	IS	XH	RE	FY
R	FAOI	SUY	THK	MP	QD	JXL	WV	NC	GE	RB
S	XDIP	UNB	MGQ	OY	RS	TFE	VK	LH	AW	CJ
T	WCIO	XBN	DAV	RG	MF	YQL	UT	HS	EP	KJ
U	OBXH	NRP	QMF	CS	AK	EVI	LT	WD	JG	YU
V	FPTQ	NOD	JGY	IU	VR	SCH	AL	BW	MK	EX
W	AIQJ	URT	SHC	MO	YD	FBX	WG	KV	PE	LN
X	YBDQ	RPE	FJU	OX	AI	WMC	NL	TK	GH	VS
Y	OFJS	WQM	UBI	AN	EL	TDG	YP	CX	KV	HR

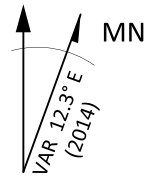
**NAVAIDS**

<b>Id</b>	<b>Name</b>	<b>Channel</b>	<b>Position</b>	<b>Elevation</b>
BCE	Bryce Canyon	75	N3741.35 W11218.23	9040
BIH	Bishop	33	N3722.62 W11821.99	4114
BLD	Boulder	114	N3559.75 W11451.82	3650
BTY	Beatty	94	N3648.54 W11644.86	2925
CDC	Cedar City	120	N3747.24 W11304.90	5463
DAG	Daggett	79	N3457.75 W11634.69	1760
EED	Needles	99	N3445.96 W11428.43	650
GFS	Goffs	91	N3507.87 W11510.59	4019
GRL	Groom Lake	18	N3713.91 W11548.16	4475
HEC	Hector	74	N3447.83 W11627.78	1854
ILC	Wilson Creek	110	N3815.02 W11423.65	9318
INS	Creech AFB	87	N3635.20 W11540.12	3101
LAS	McCarran Intl	116	N3604.78 W11509.59	2142
LSV	Nellis	12	N3614.68 W11501.50	1864
MLF	Milford	58	N3821.62 W11300.79	4977
MMM	Mormon Mesa	90	N3646.16 W11416.65	2120
MVA	Mina	98	N3833.92 W11801.97	7860
OAL	Coale Dale	124	N3800.20 W11746.23	4800
PGS	Peach Springs	57	N3537.48 W11332.67	4754
TPH	Tonopah Muni	119	N3801.84 W11702.01	5330
TQQ	Silverbow	77	N3748.00 W11647.00	5500
UTI	St George	23	N3705.29 W11335.53	2871





RWY 3L-21R  
 PCN 46 R/C/W/T  
 RWY 3R-21L  
 PCN 51 R/C/W/T  
 2017



PAR	RWY	CAT	MINIMA		ARP	ELEV	Scale 1:35'500	
	21L	A B D E	2057 - 0.8 200 (200-0.8/1.6)	GS 3°	36° 14.060° N 115° 01.058° W	1857 [ft] 566 [m]	0	300
	3R	A B D E	2057 - 0.8 200 (200-0.8/1.6)	GS 3°			600	900
	21R	A C D E	2257 - 1.2 350 (350-1.2/1.6)				1200	1500 [m]
	3L	A C D E	2257 - 1.2 350 (350-1.2/1.6)				0	1000
							2000	3000
							4000	5000 [ft]

RWY	TORA	TODA	ASDA	LDA	PSN	THR	ALS
21L	10051 [ft] 3063 [m]	11051 [ft] 3368 [m]	11051 [ft] 3368 [m]	10051 [ft] 3063 [m]	36°14.043' N	115°01.018' W	⊕
3R	10120 [ft] 3084 [m]	11120 [ft] 3398 [m]	11120 [ft] 3398 [m]	10120 [ft] 3084 [m]	36°13.029' N	115°02.038' W	

ATIS	NELLIS GROUND	NELLIS TOWER	NELLIS CONTROL	TACAN	ILS RWY 21L	NELLIS EAST	NELLIS WEST
270.100 MHz	275.800   121.800	327.000   132.55	317.525	LSV 12X	109.10 Mhz	384.400	385.000

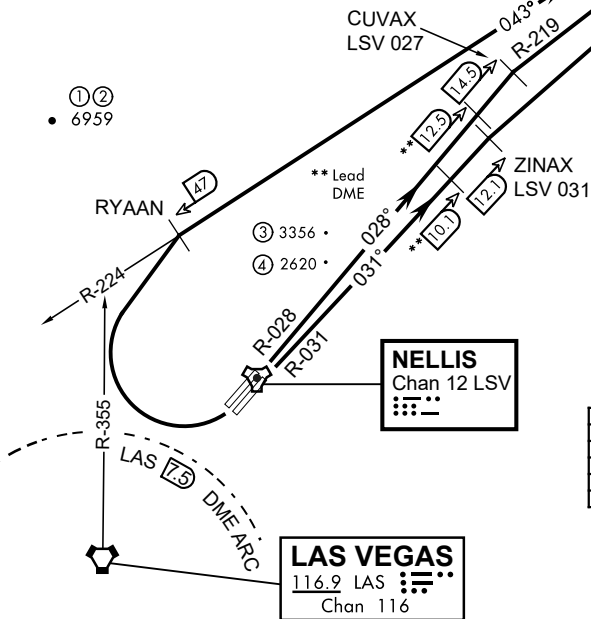
ATIS  
270.100  
NELLIS GROUND  
275.800  
NELLIS TOWER  
327.000  
NELLIS CONTROL  
317.525  
NELLIS DEP/APP EAST  
384.400  
BLACKJACK  
377.800



**MORMON MESA**  
114.3 MMM  
Chan 90  
L-9 H-3

19,000

CAUTION: If unable to comply with restrictions advise ATC prior to departure.



- ① 12.24 NM from Rwy 21R
- ② 12.40 NM from Rwy 21L
- ③ 5.67 NM from Rwy 3L
- ④ 5.85 NM from Rwy 3R

Rwy	Knots	60	120	180	240	300	360
* 3L	Ⓞ V/V(fpm)	291	582	873	1164	1455	1746
* 3R	Ⓞ V/V(fpm)	258	516	774	1032	1290	1548
* 21L	Ⓞ V/V(fpm)	529	1058	1587	2116	2645	3174
* 21R	Ⓞ V/V(fpm)	536	1072	1600	2144	2680	3216
† 3L/R	Ⓞ V/V(fpm)	359	718	1077	1436	1795	2154

\* Minimum † ATC Climb Rate  
 Ⓞ To 3600  
 Ⓜ To 3200  
 Ⓞ To 17,000  
 Ⓞ To 13,500  
 Ⓞ To 19,000

**DEPARTURE ROUTE DESCRIPTION**

**TAKE-OFF RWY 3L**

- Fly runway heading to intercept the LSV TACAN R-027 then direct CUVAX, intercept the MMM VORTAC R-219 then direct MMM climbing to FL190 or as assigned, then via assigned route.

**TAKE-OFF RWY 3R**

- Fly runway heading to intercept the LSV TACAN R-031 then direct ZINAX, intercept the MMM VORTAC R-217 then direct MMM, climbing to FL190 or as assigned, then via assigned route.

**TAKE-OFF RWY 21L/R**

- Turn right to intercept MMM VORTAC R-224 prior to MMM 47 DME, remain North of the LAS VORTAC 7.5 DME, remain East of LAS R-355, intercept MMM R-224 then direct MMM cross MMM at or above FL190, then via assigned route.

NOISE ABATMENT PROCEDURES: Fly acc. Nellis Noise Abatement instructions

# HI-TACAN Y RWY 21L

TACAN LSV Chan 12	APCH CRS 210°	Rwy ldg 21L 10,051 TDZE 1865 Arprt Elev 1869	Rwy ldg 21R 10,120 TDZE 1869
-------------------	---------------	--	------------------------------

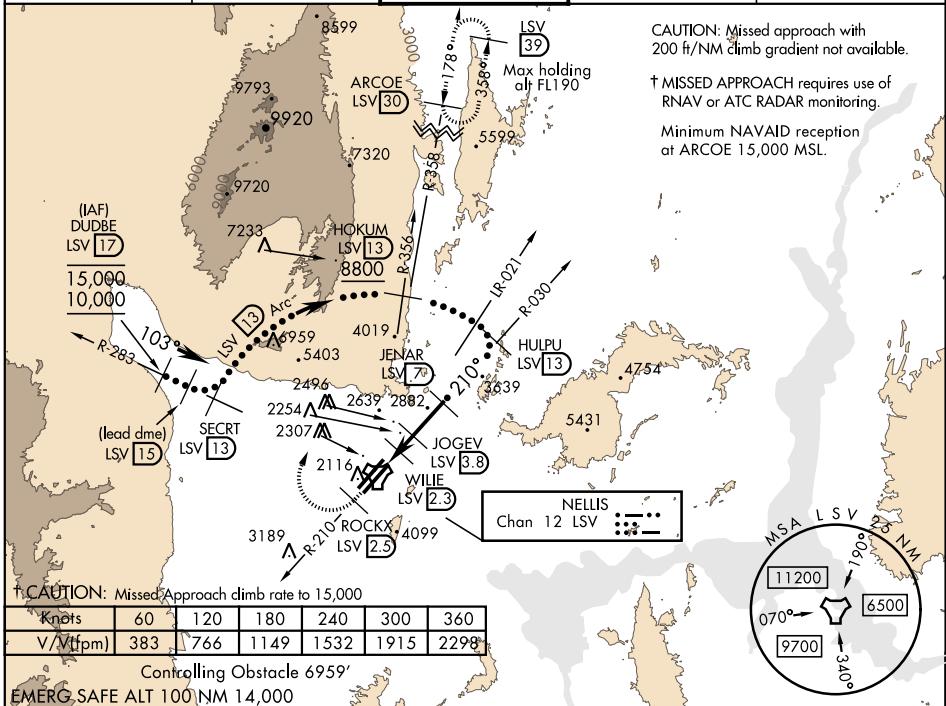
JAL-227 [USAF] NELLIS AFB (KLSV)

\* When ALS inop, increase CAT CDE vis to 1 3/4 miles.  
 \*\* Circling not authorized E of Rwy 3R-21L.



† MISSED APPROACH: Climb to 15,000, intercept LSV TACAN R-210 to 2.5 DME (ROCKX), then climbing right turn heading 020° to join LSV R-358 to ARCOE and hold, continue climb in hold to 15,000. Missed approach not for civil use.

ATIS 270.1	NELLIS APP CON 124.95 273.55	NELLIS TOWER 132.55 327.0	GND CON 121.8 275.8	CLNC DEL 120.9 289.4
------------	------------------------------	---------------------------	---------------------	----------------------



CAUTION: Missed approach with 200 ft/NM climb gradient not available.

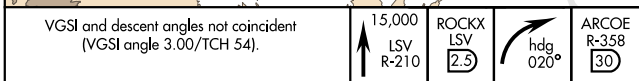
† MISSED APPROACH requires use of RNAV or ATC RADAR monitoring.

Minimum NAVAID reception at ARCOE 15,000 MSL.

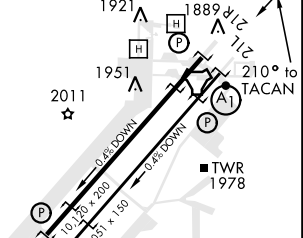
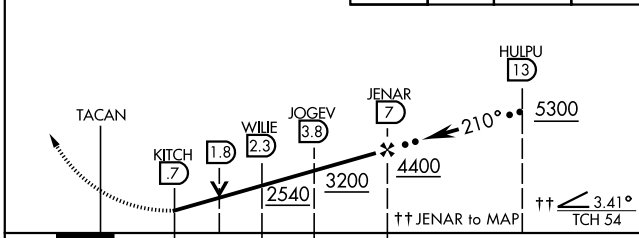
† CAUTION: Missed Approach climb rate to 15,000

Knots	60	120	180	240	300	360
V/Vt (fpm)	383	766	1149	1532	1915	2298

Controlling Obstacle 6959'  
EMERG. SAFE ALT 100 NM 14,000



ELEV 1869	TDZE 21L 1865	TDZE 21R 1869
-----------	---------------	---------------



CATEGORY	C	D	E
S-21L *	2460-1 1/4	595 (600-1 1/4)	
SIDESTEP 21R	2460-1	591 (600-1)	
CIRCLING **	2620-2 1/4 751 (800-2 1/4)	2840-3 971 (1000-3)	3040-3 1171 (1200-3)

HIRL all Rwy

# HI-TACAN Y RWY 21L

SW-4, 05 DEC 2019 to 02 JAN 2020

SW-4, 05 DEC 2019 to 02 JAN 2020

LAS VEGAS, NEVADA

# HI-TACAN RWY 3R

TACAN LSV Chan 12	APCH CRS 029°	Rwy ldg 10,051
		TDZE 1833
		Arprt Elev 1869

JAL-227 (USAF)

NELLIS AFB (KLSV)

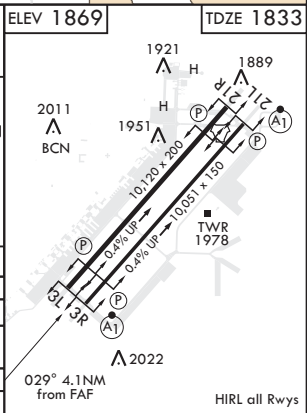
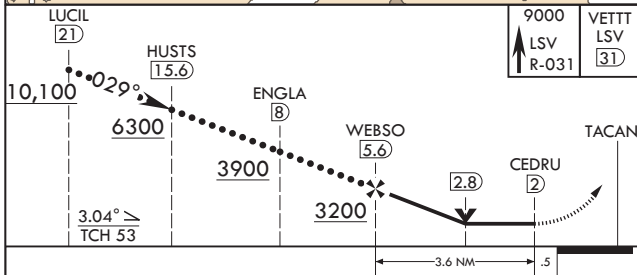
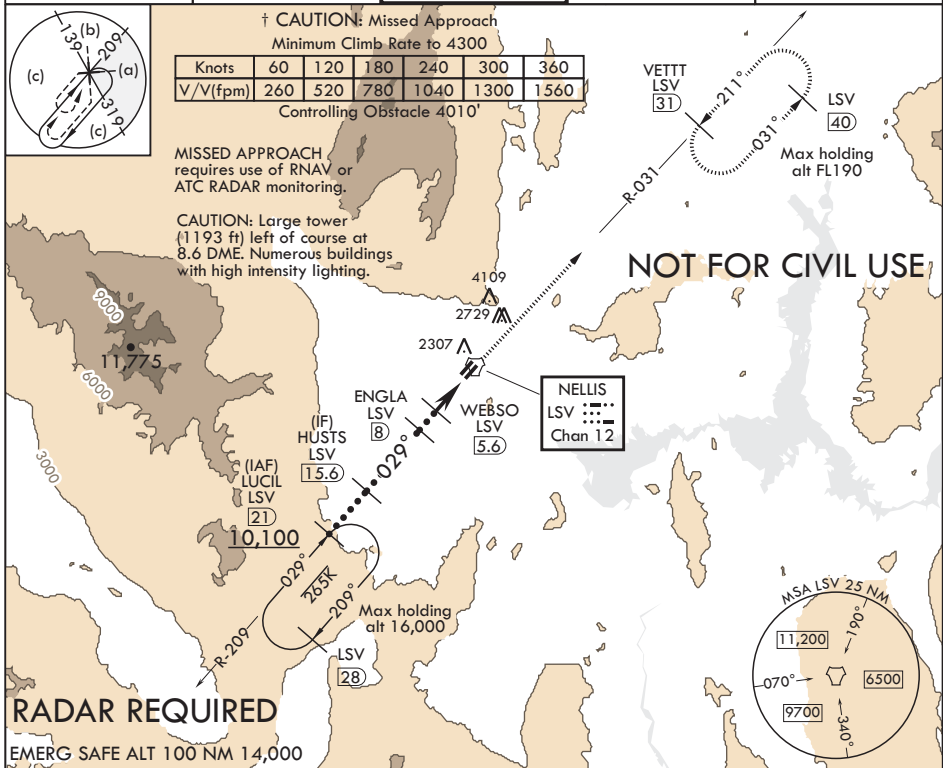
⚠ \* When ALS inop, increase CAT CDE vis to 2 1/2 miles.  
 \*\* When ALS inop, increase CAT CDE vis to 1 3/8 miles.  
 \*\*\* Circling not authorized E of Rwy 3R-21L.

ALSF-1



MISSED APPROACH: Climb to 9000 on LSV TACAN R-031 to VETT and hold, continue climb in hold to 9000.

ATIS 270.1	APP CON 124.95 273.55	TOWER 132.55 327.0	GND CON 121.8 275.8	CLNC DEL 120.9 289.4
---------------	--------------------------	-----------------------	------------------------	-------------------------



LAS VEGAS, NEVADA

36°14'N - 115°02'W

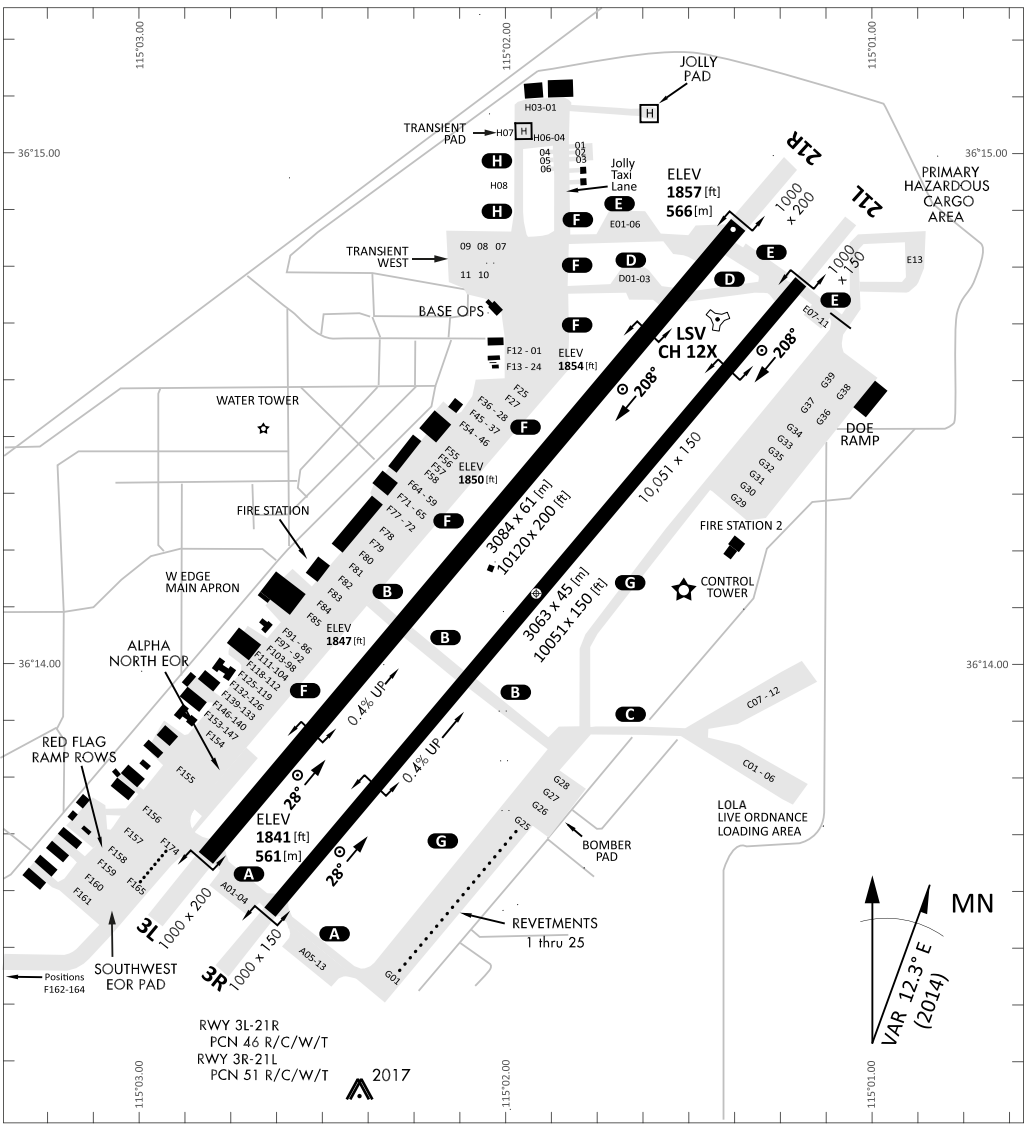
NELLIS AFB (KLSV)

Amdt 8 05DEC19

# HI-TACAN RWY 3R

SW-4, 05 DEC 2019 to 02 JAN 2020

SW-4, 05 DEC 2019 to 02 JAN 2020



RWY 3L-21R  
 PCN 46 R/C/W/T  
 RWY 3R-21L  
 PCN 51 R/C/W/T  
 2017

PAR	RWY	CAT	MINIMA		ARP	ELEV	Scale 1:35'500	
	21L	A B D E	2057 - 0.8 200 (200-0.8/1.6)	GS 3°	36° 14.060° N 115° 01.058° W	1857 [ft] 566 [m]	0 300 600 900 1200 1500 [m]	
	3R	A B D E	2057 - 0.8 200 (200-0.8/1.6)	GS 3°			0 1000 2000 3000 4000 5000 [ft]	
	21R	A C D E	2257 - 1.2 350 (350-1.2/1.6)					
	3L	A C D E	2257 - 1.2 350 (350-1.2/1.6)					

RWY	TORA	TODA	ASDA	LDA	PSN	THR	ALS
21L	10051 [ft] 3063 [m]	11051 [ft] 3368 [m]	11051 [ft] 3368 [m]	10051 [ft] 3063 [m]	36°14.043' N	115°01.018' W	⊕
3R	10120 [ft] 3084 [m]	11120 [ft] 3398 [m]	11120 [ft] 3398 [m]	10120 [ft] 3084 [m]	36°13.029' N	115°02.038' W	

ATIS	NELLIS GROUND	NELLIS TOWER	NELLIS CONTROL	TACAN	ILS RWY 21L	NELLIS EAST	NELLIS WEST
270.100 MHz	275.800   121.800	327.000   132.55	317.525	LSV 12X	109.10 Mhz	384.400	385.000