

**MISSION DATA CARD**

OPORD		Callsign		Mission		Date/Time		
3440/2024		Tiger 1		Training		042130DEC24		
Task						Freq		
AO						261.15		
Departure				Recovery				
SID RWY 21				Tacan RWY 03				
#	Callsign		Pilot		IFF	TCN	LSR	NET
-1	Tiger 1-1		Ghost		1011	1Y	1551	01/01

**LOADOUT**

A/A						GUN	
A/G						CHF	
POD						FLR	
TKS						FUEL	

**TOLD**

	Takeoff	Target	Joker	Bingo	Land
FUEL	10803			3000	2000

**AIRBASES**

	Name	TCN	ATIS	GND	TWR	RWY	Elev	ILS
Dep	Rovaniemi	14X	282.8	282.5	250.55	21	643	111.7
Arr	Rovaniemi	14X	282.8	282.5	250.55	21	643	111.7
Div	CVN-71 USS Theodore Roosevelt	71X		ICLS 7	304.0			

**SUPPORT****Tanker**

Callsign	TCN	Freq	ALT	TAS
SHELL 1	41Y	360.8		
	Pos			

**AWACS**

Callsign	Freq	ALT	Pos
HEIMDALL	348.7		

## RADIO CHANNELS

#	Freq	Name
1		Flight/Squadron specific
2	282.8	Rovaniemi ATIS
3	282.5	Rovaniemi Ground
4	250.55	Rovaniemi Tower
5	320.7	Bodo ATIS
6	250.75	Bodo Tower
7	235.45	Kallax ATIS
8	250.3	Kallax Tower
9	265.0	Texaco-1   KC-135   Medium / Slow   71Y
10	319.8	Arco-1   KC-135   High / Fast   22Y
11	360.8	Shell-1   KC-135 MPRS   High / Fast   41Y
12	304.0	CVN-71 Rough Rider (RRR)   71X
13	303.0	LHA-1 Tarawa (TWA)   79X
14	247.8	S-3B Mauler-1 (MAU)  64Y
15	347.8	Loki (E-2D)
16	348.7	Heimdall (E-3A)
17	242.17	ESR02 - CAS Range Operator
18	34.7	ESR02 - JTAC Odin
19	270.5	Blue
20	270.75	Red

**RAMROD**

0	1	2	3	4	5	6	7	8	9
M	I	S	C	O	U	N	T	E	D

**KTC 1400 C**

	0	1	2	3	4	5	6	7	8	9
A	FKGJ	AHX	TMO	YV	NI	PEU	QR	WB	SL	CD
B	NAEC	OJI	HYX	MP	SB	KQL	GW	UR	TV	FD
C	THSO	AWL	XIV	UG	KP	FJM	CB	NQ	RD	EY
D	MISU	TWL	QFN	AD	OR	PXH	EY	GJ	BV	KC
E	ODCF	SHL	EYV	AB	XN	PTG	IK	UW	JR	MQ
F	QUXI	RHC	SDF	AW	BT	GLN	OE	PM	YK	VJ
G	RSFA	XDQ	UWN	LT	PC	KHB	IJ	YE	MV	OG
H	LABC	SEM	IJD	PO	FW	QVY	KG	NX	HU	TR
I	EANS	RHO	JPB	DV	XT	KLQ	MC	FG	UY	WI
J	DJRK	QSC	LHA	IB	WO	TVU	XP	GE	MN	FY
K	FAEP	LVR	DCU	GK	OQ	SJH	MN	BY	XT	IW
L	CWOJ	SNV	LFD	KT	YG	HMR	AP	EU	IB	QX
M	BVCR	PFQ	NAE	SD	KY	TOI	GL	JU	XH	WM
N	JVBL	OYN	ETP	KM	QS	WFA	HR	GU	XC	DI
O	POVR	AWN	TCI	QY	EF	HDB	US	LG	XM	KJ
P	WHLD	KVU	AIX	GN	OP	QJB	TR	YS	MF	EC
Q	YLAD	FNX	WCQ	PM	HT	GVJ	OK	ER	SU	BI
R	VPME	WQF	ARO	XT	LD	JYK	SU	NG	CI	BH
S	OGIU	FHW	QXM	EJ	NL	KSC	TB	RD	VA	YP
T	NKRM	HTV	BJO	SD	EP	IYQ	UC	FW	AL	XG
U	DNOI	JWF	TRA	UB	PM	KLV	HC	SE	XG	YQ
V	FCMG	TND	OPA	LI	VX	UWY	RQ	SJ	HK	EB
W	IXGJ	TOL	YKU	PM	VE	BDF	WR	SH	AC	QN
X	LPGV	XSJ	IBE	MN	AT	HUY	WD	OF	RC	QK
Y	DFMH	YAX	BKQ	EP	IT	NVJ	LR	GS	WC	UO

**NAVAIDS**

Id	Name	Channel	Position	Elevation
BOO	Bodo	45	N67 15.838 E014 20.046	43
BNK	Banak	47	N70 03.937 E024 58.181	17
OYA	Andoya	28	N69 17.175 E016 08.658	19

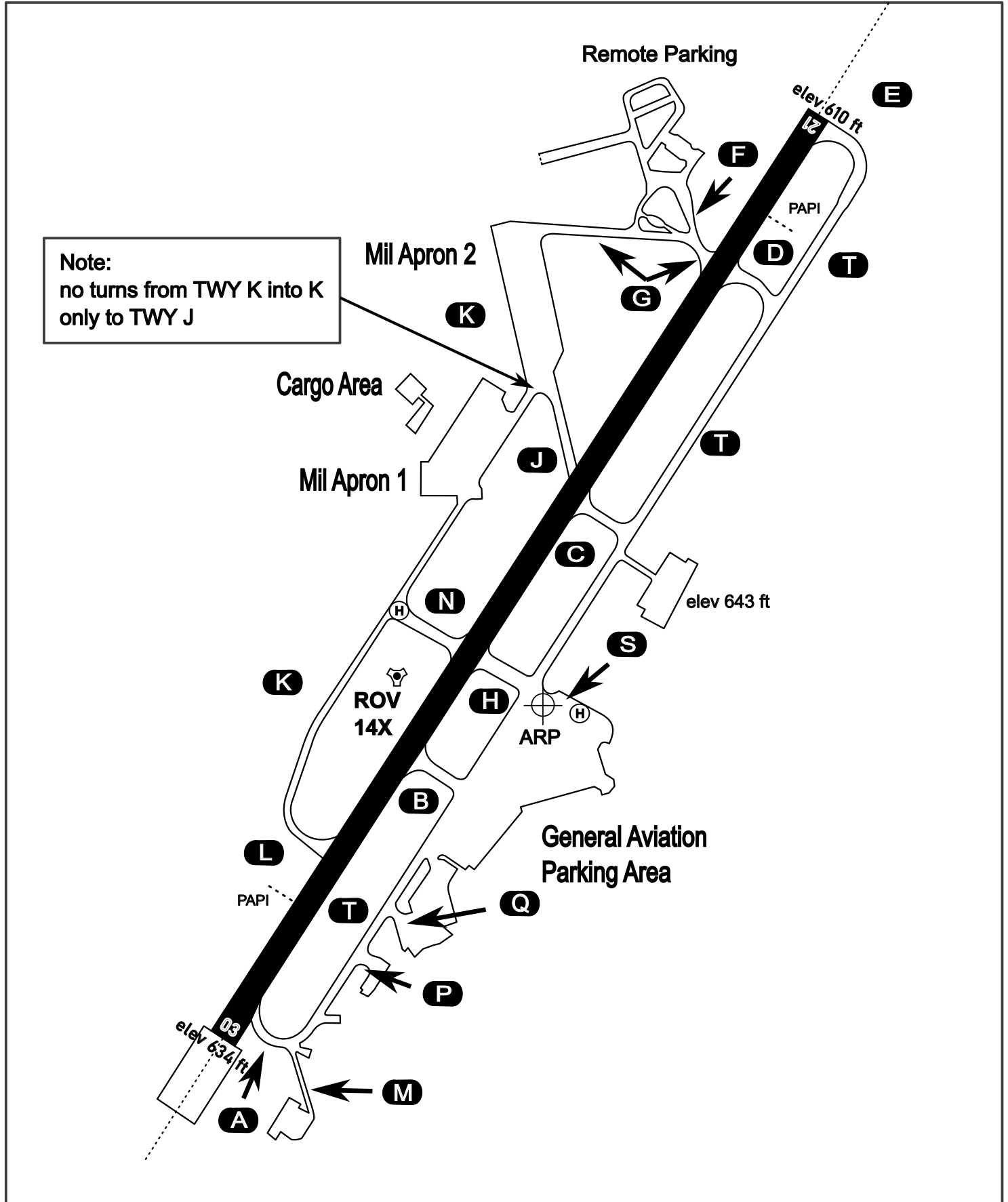
# AERODROME CHART

Rovaniemi Aerodrome

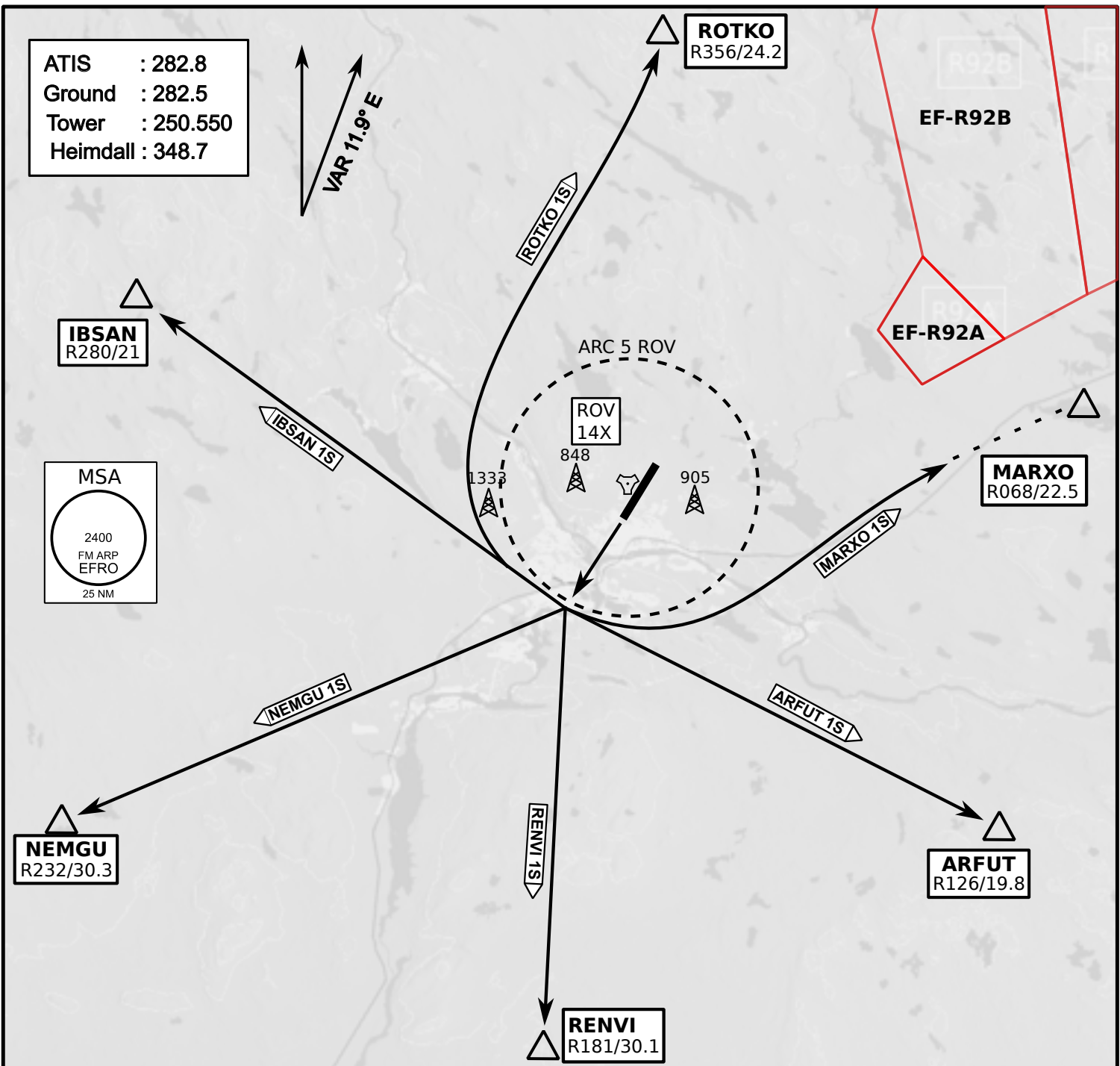
ARP N66° 33' 42" E025° 49' 51"

elev 643 ft

## ROVANIEMI, FINLAND



ATIS	Ground	Tower	Radar
282.800	282.500	250.550	348.700



- Climb on Rwy heading to min A2000ft
- when passing A2000ft OR 5 DME ROV (whichever is later) turn direct exit point
- Stay outside ARC 5 ROV
- AB usage only if necessary for flight safety

