

MISSION DATA CARD

OPORD		Callsign		Mission		Date/Time	
3438/2024		Edelweiss		Training		032000DEC24	
Task						Freq	
AO						264.05	
Departure				Recovery			
VFR Helicopter				VFR Helicopter			
#	Callsign	Pilot		IFF	TCN	LSR	NET
-1	Edelweiss-1	Marsy		1701	1Y	1701	

LOADOUT

A/A						GUN	
A/G						CHF	
POD						FLR	
TKS						FUEL	

TOLD

	Takeoff	Target	Joker	Bingo	Land
FUEL	11087				

AIRBASES

	Name	TCN	ATIS	GND	TWR	RWY	Elev	ILS
Dep	Rovaniemi	14X	282.8	282.5	250.55	21	643	111.7
Arr	Rovaniemi	14X	282.8	282.5	250.55	21	643	111.7
Div	Rovaniemi	14X	282.8	282.5	250.55	21	643	111.7

RADIO CHANNELS

#	Freq	Name
1		Flight/Squadron specific
2	282.8	Rovaniemi ATIS
3	282.5	Rovaniemi Ground
4	250.55	Rovaniemi Tower
5	320.7	Bodo ATIS
6	250.75	Bodo Tower
7	235.45	Kallax ATIS
8	250.3	Kallax Tower
9	265.0	Texaco-1 KC-135 Medium / Slow 71Y
10	319.8	Arco-1 KC-135 High / Fast 22Y
11	360.8	Shell-1 KC-135 MPRS High / Fast 41Y
12	304.0	CVN-71 Rough Rider (RRR) 71X
13	303.0	LHA-1 Tarawa (TWA) 79X
14	247.8	S-3B Mauler-1 (MAU) 64Y
15	347.8	Loki (E-2D)
16	348.7	Heimdall (E-3A)
17	242.17	ESR02 - CAS Range Operator
18	34.7	ESR02 - JTAC Odin
19	270.5	Blue
20	270.75	Red

RAMROD

0	1	2	3	4	5	6	7	8	9
V	U	L	C	A	N	I	Z	E	S

KTC 1400 C

	0	1	2	3	4	5	6	7	8	9
A	DTRA	FLI	MJB	KY	QH	CEW	OP	XN	SV	UG
B	ILXD	BOT	RKF	PH	VW	MJN	AG	ES	UY	CQ
C	RSFO	TJY	XDW	KA	LV	IEC	BG	MN	UQ	PH
D	BQTC	NRD	KXW	MV	YG	OPJ	LS	AF	EH	IU
E	JSNK	LUG	IVE	RF	WB	OXA	CT	MQ	YP	HD
F	XDVJ	LON	MHC	GS	TQ	RYB	PI	EK	FW	AU
G	CWRI	JLE	HUV	YD	SG	POT	AB	QM	NX	KF
H	OVWF	MKY	DNH	RE	IP	JSL	BG	XT	QA	UC
I	AMNF	QYU	CSG	OD	VJ	IRP	BX	KH	TE	WL
J	RDVK	YTJ	NUS	IF	HC	LPO	AG	EX	BW	QM
K	PYCD	JVE	TKU	HW	ON	FQL	SG	IR	MB	AX
L	VMHN	TRJ	SAG	OI	QE	LKW	DC	FX	BP	YU
M	XJPW	FRQ	SEO	CK	NA	GID	BU	YV	TL	HM
N	CWYT	LMV	BAH	EJ	IN	FQR	OK	PG	SU	XD
O	PKNV	YFU	RGB	DA	HI	CJO	QT	LE	SM	XW
P	EPNF	GAH	CML	DS	BX	YJO	IK	RV	UT	WQ
Q	PISB	ETG	HYO	LF	VU	XWC	JM	QK	NA	DR
R	IVYT	KBH	REJ	SW	LQ	MXC	OA	UG	DN	PF
S	CJBF	KRO	TPX	EV	NU	SHD	GW	YA	LM	IQ
T	WSGI	LPB	QJX	TF	MR	OAH	UE	DK	VC	NY
U	FGWH	IDO	VAQ	KM	XE	JYB	RL	PC	ST	NU
V	MKBO	YQU	DVE	CP	AG	TXF	LI	SW	HJ	NR
W	FGYI	SEC	PNT	UA	HD	LRK	OW	BV	QM	XJ
X	RYML	ESU	GVT	BO	NF	JPC	XI	WD	HA	KQ
Y	CEPY	GOK	BTU	RX	WH	FIJ	VS	QM	ND	LA

NAVAIDS

Id	Name	Channel	Position	Elevation
BOO	Bodo	45	N67 15.838 E014 20.046	43
BNK	Banak	47	N70 03.937 E024 58.181	17
OYA	Andoya	28	N69 17.175 E016 08.658	19

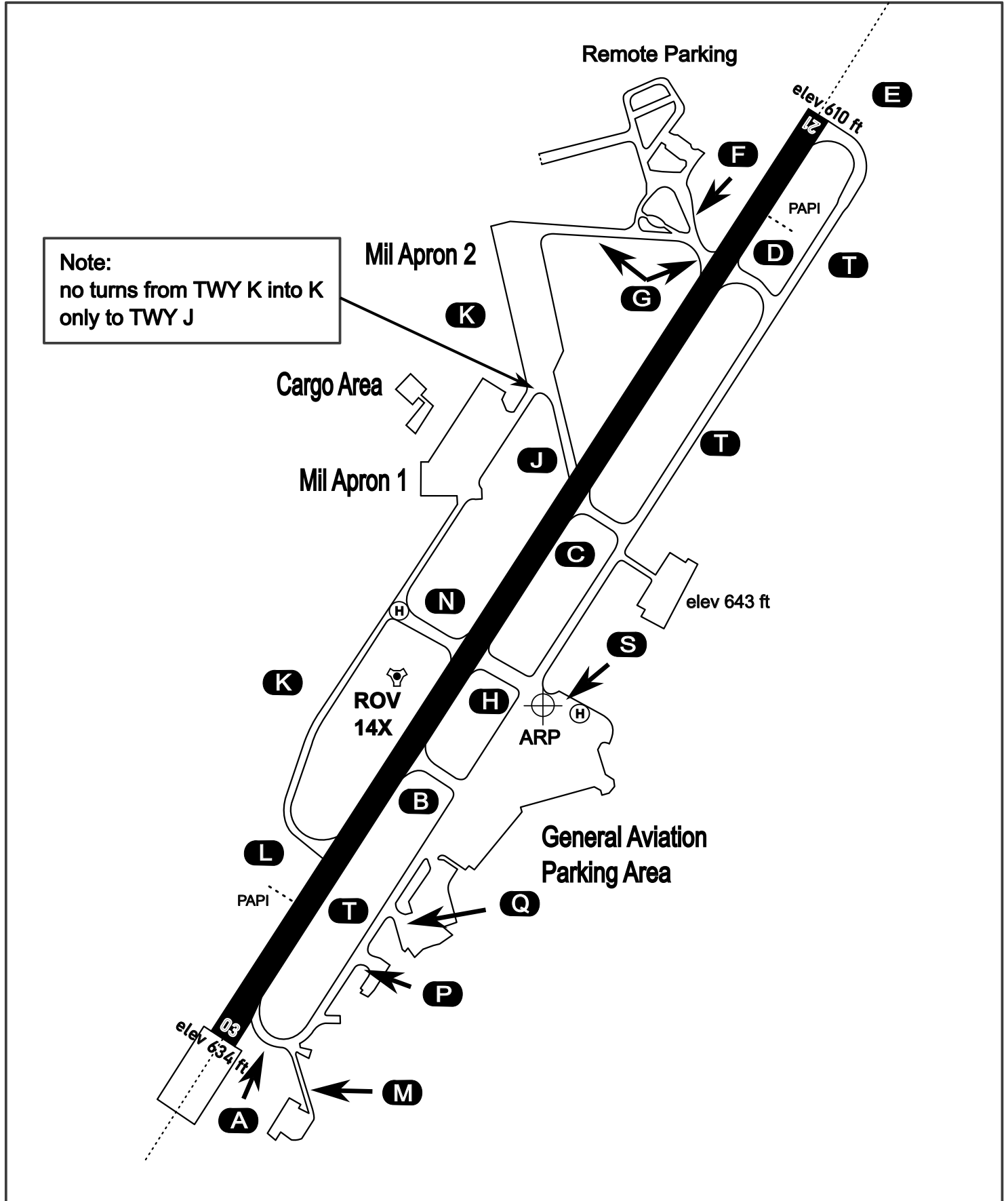
AERODROME CHART

Rovaniemi Aerodrome

ARP N66° 33' 42" E025° 49' 51"

elev 643 ft

ROVANIEMI, FINLAND

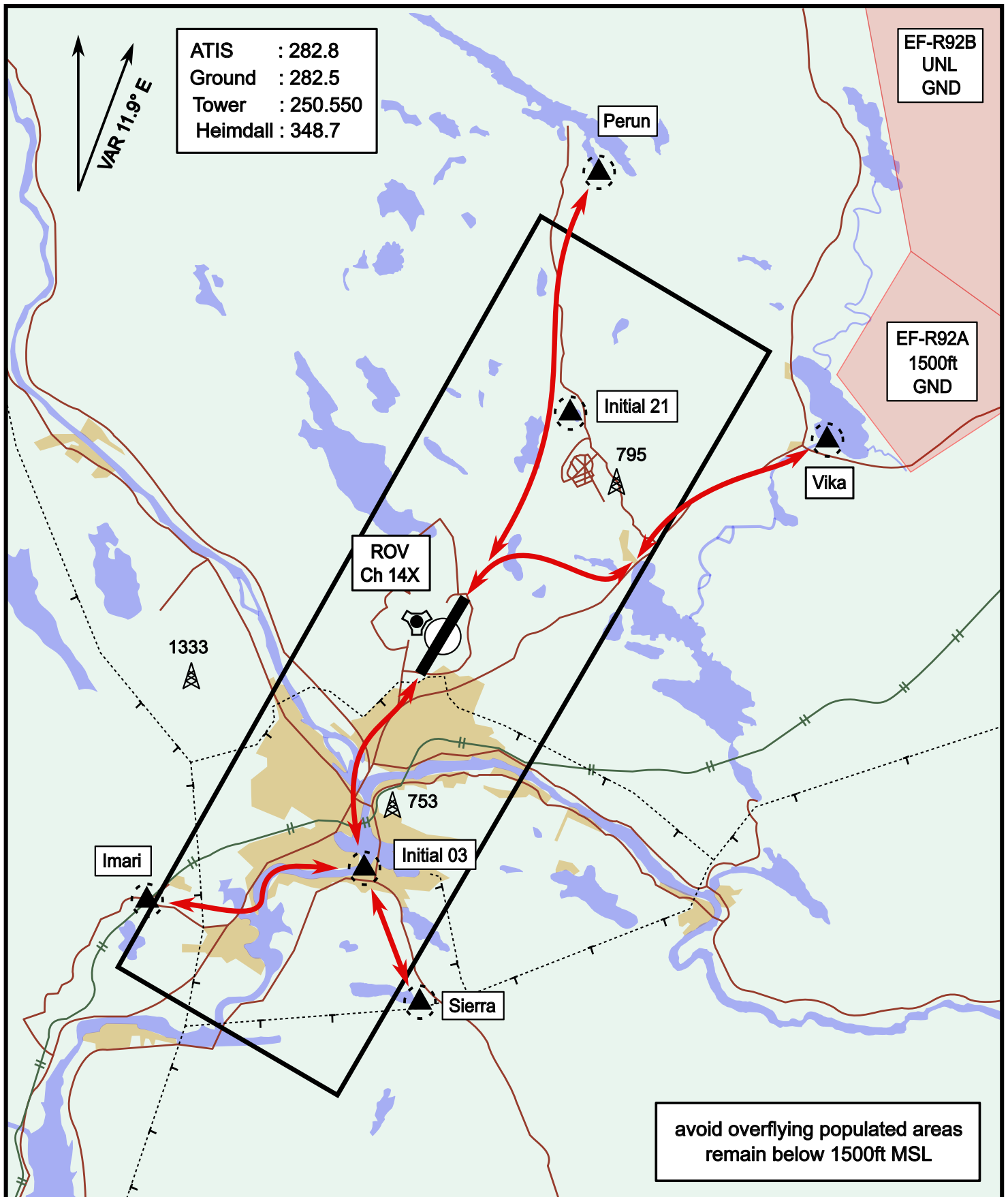


ATIS	Ground	Tower	Radar
282.800	282.500	250.550	348.700

Helicopter Routing

elev 643 ft

Rovaniemi, Finland

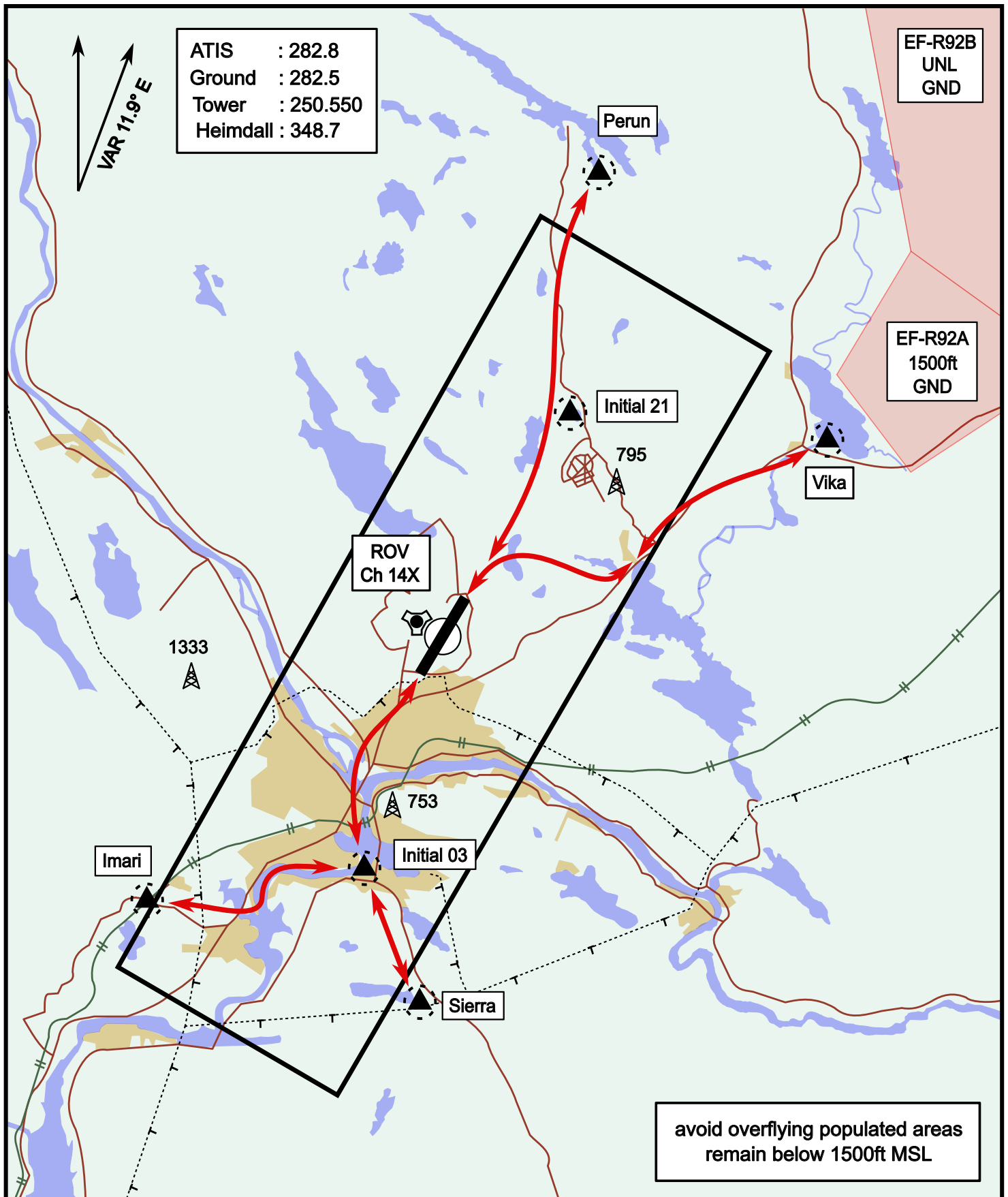


Vika	N66° 37.474 / E026° 13.557	Sierra	N66° 25.711 / E025° 46.610
Perun	N66° 44.135 / E026° 01.630	Imari	N66° 28.406 / E025° 31.291
Initial21	N66° 38.421 / E025° 58.682	Initial03	N66° 28.793 / E025° 44.105

Helicopter Routing

elev 643 ft

Rovaniemi, Finland

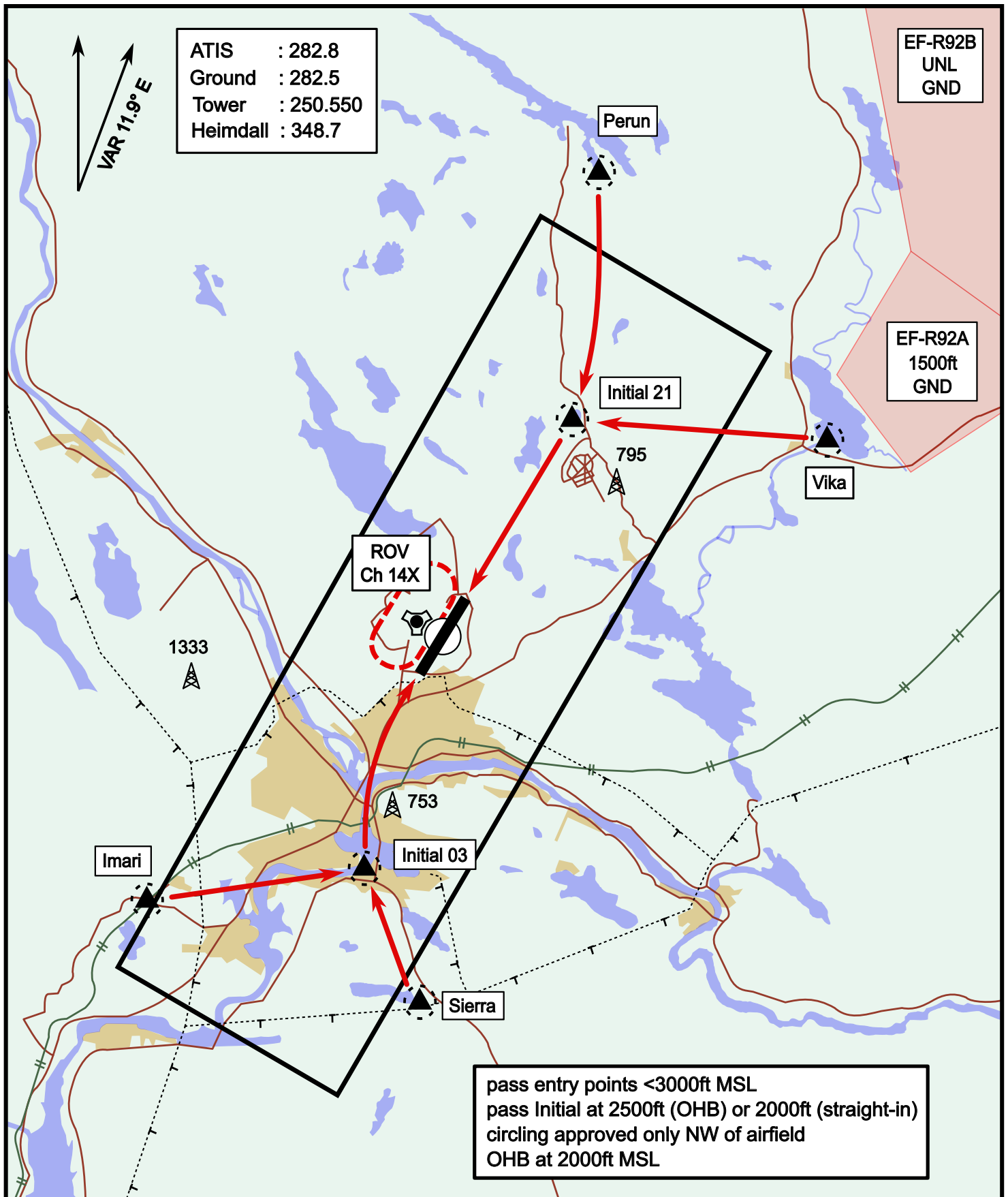


Vika	N66° 37.474 / E026° 13.557	Sierra	N66° 25.711 / E025° 46.610
Perun	N66° 44.135 / E026° 01.630	Imari	N66° 28.406 / E025° 31.291
Initial21	N66° 38.421 / E025° 58.682	Initial03	N66° 28.793 / E025° 44.105

Visual Approach Jet

elev 643 ft

Rovaniemi, Finland



Vika	N66° 37.474 / E026° 13.557	Sierra	N66° 25.711 / E025° 46.610
Perun	N66° 44.135 / E026° 01.630	Imari	N66° 28.406 / E025° 31.291
Initial21	N66° 38.421 / E025° 58.682	Initial03	N66° 28.793 / E025° 44.105

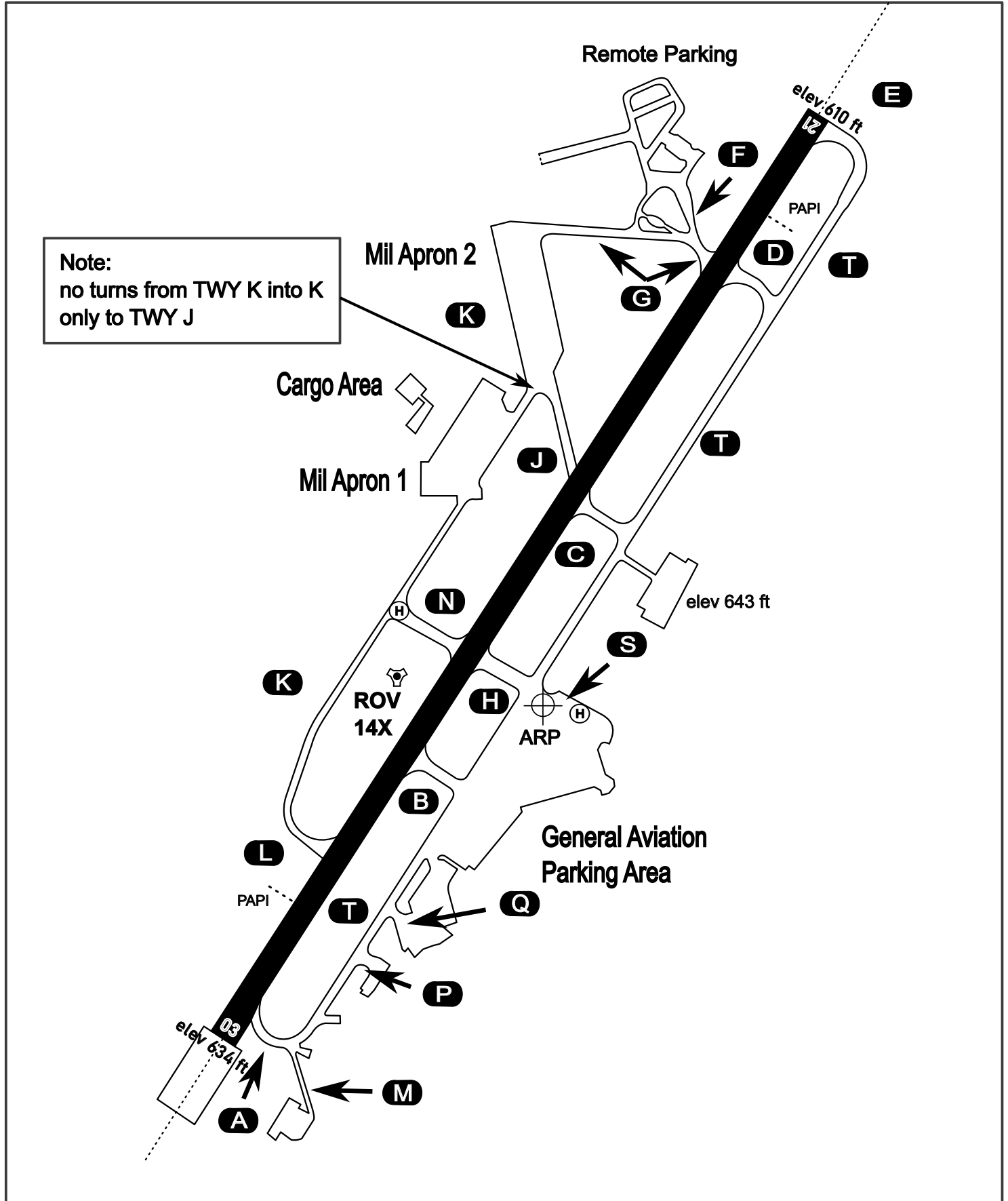
AERODROME CHART

Rovaniemi Aerodrome

ARP N66° 33' 42" E025° 49' 51"

elev 643 ft

ROVANIEMI, FINLAND



ATIS	Ground	Tower	Radar
282.800	282.500	250.550	348.700