

**MISSION DATA CARD**

OPORD		Callsign		Mission		Date/Time	
3435/2024		Nazgul 6		Training		022000DEC24	
Task	CAS Training					Freq	
AO	Range 66					262.45	
Departure				Recovery			
FYTTR THREE				STRYK			
#	Callsign	Pilot		IFF	TCN	LSR	NET
-1	Nazgul 6-1	Striver/UTA		1161	1Y	1561	
-2	Nazgul 6-2	Tank		1162	64Y	1562	
-3	Nazgul 6-3	Repsus		1163	64X	1563	
-4	Nazgul 6-4	Razorback		1164	1X	1564	

**LOADOUT**

A/A	2xA9M, 2xA120C				GUN	100% SAPHEI
A/G	12xM82				CHF	120
POD	TGT, NAV				FLR	60
TKS	2xFT610				FUEL	100%

**TOLD**

	Takeoff	Target	Joker	Bingo	Land
FUEL	30518				

**AIRBASES**

	Name	TCN	ATIS	GND	TWR	RWY	Elev	ILS
Dep	Nellis AFB	12X	270.1	275.8	327.0	21L	1850	109.1
Arr	Nellis AFB	12X	270.1	275.8	327.0	21L	1850	109.1

**FLIGHTPLAN**

#	Name	Navaid/Coords/DME	ALT	TOT
1	FYTTR	LSV 269/33 (N36 21.440 W115 41.470)	14000	
2	IP	N36 21.440 W115 41.470	1000	
3	ECHO	N36 21.440 W115 41.470	1000	
4	NIXON	LSV 292/30 (N36 32.010 W115 32.250)	9500	
5	STRYK	LSV 282/26 (N36 25.620 W115 30.700)	10000	

**COMMS**

Radio	Usage
1	262.45
2	04 / 126.5 / 04

## NOTES

JTAC Warrior 126.500

**SUPPORT****Tanker**

Callsign	TCN	Freq	ALT	TAS
TEXACO 2	95Y	289.7	FL220	420
	Pos	Pegasus.1: CDC 166/102 (N3730 W11440)		

**AWACS**

Callsign	Freq	ALT	Pos
MAGIC	377.8	FL270	N3749 W11417 - N3713 W11446

**OTHER FLIGHTS**

Callsign	Mission	Airframe	Freq	TCN	Grpld	Laser
Outlaw 1	Training	2x AH-64D	133.5	1/64		170X
AO	Range 74	Task	Recon			
Monster 1	Training	4x A-10C	132.15	14/77	21	161X
AO	R64	Task	ROCKET TRAINING			

**RADIO CHANNELS**

#	Freq	Name
1		Flight/Squadron specific
2	289.4	Nellis Clearance Delivery
3	275.8	Nellis Ground
4	327.0	Nellis Tower
5	385.4	Nellis Approach/Departure West
6	273.55	Nellis Approach/Departure East
7	317.525	Nellis Control -- Sally
8	254.4	Nellis Control-- Lee
9	305.6	SOF Bullseye
10	343.725	EMERGENCY SINGLE FRQ
11	270.1	Nellis ATIS
12	360.625	Creech AFB Tower
13	250.1	HAVE QUICK 13
14	251.1	HAVE QUICK 14
15	252.1	HAVE QUICK 15
16	377.8	Blackjack
17	265.0	KC-135 AR-641A
18	360.8	KC-135MPRS AR-635
19	319.8	KC-135MPRS AR-625
20	300.05	KC-135 AR-231V

**RAMROD**

0	1	2	3	4	5	6	7	8	9
L	A	C	H	R	Y	M	O	S	E

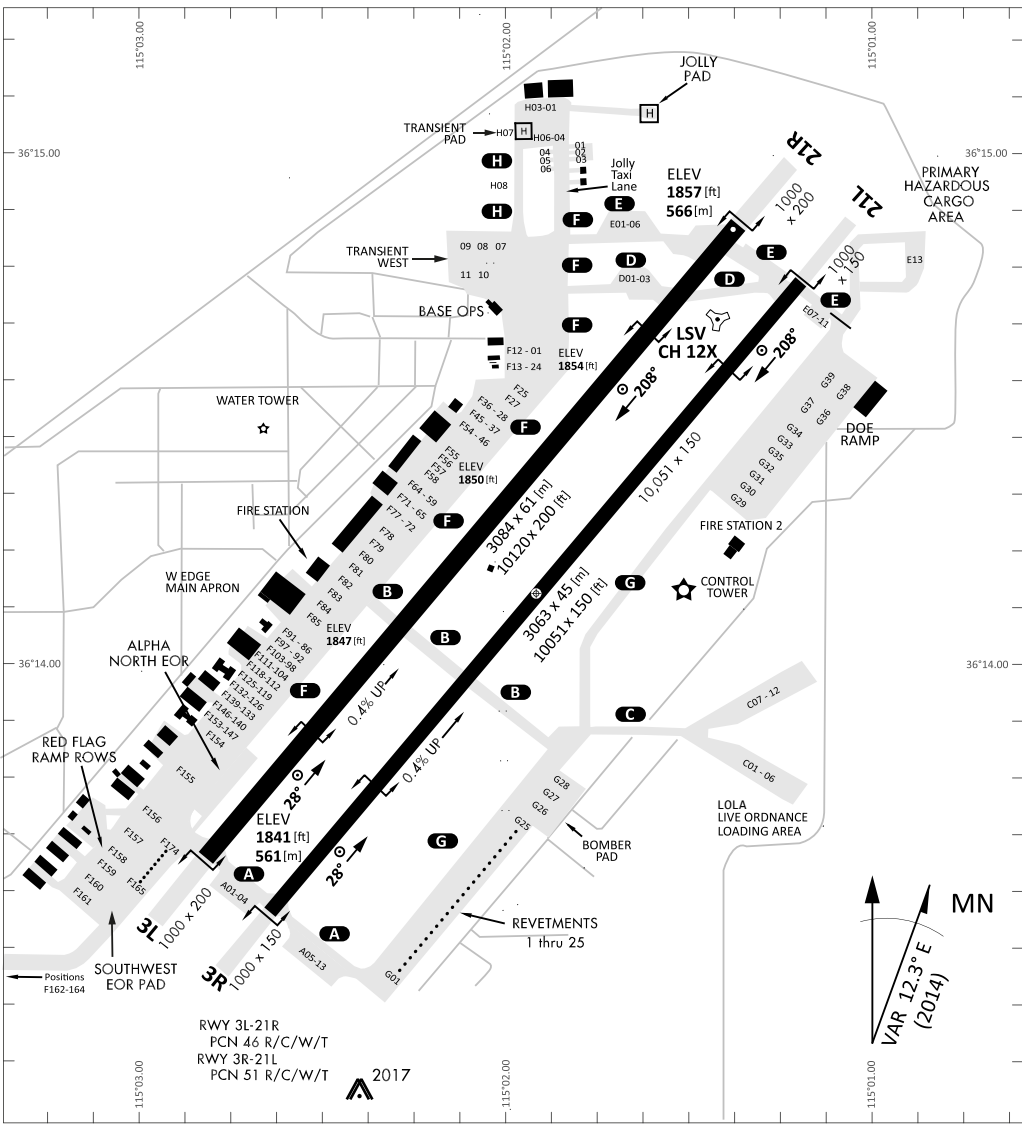
**KTC 1400 C**

	0	1	2	3	4	5	6	7	8	9
A	TXBG	OWS	RVE	DL	JQ	FMP	NU	IK	CY	AH
B	VGXR	ELC	UFD	BO	JH	NYP	AM	ST	WQ	KI
C	PJTO	KGF	VYU	NI	LB	CRS	AX	HE	DW	QM
D	XYGE	SDR	UIQ	AF	OJ	LCH	PV	TK	WN	MB
E	HVFE	GJI	YAT	RO	XP	BNW	LD	SK	MQ	CU
F	DVCN	JYX	OMA	TL	RW	IKB	HS	FG	EQ	PU
G	JNQE	LUP	YHV	MS	RA	DXW	OI	FG	CT	BK
H	BAYD	FIX	JRH	OG	CN	PVT	WQ	LS	ME	UK
I	RTYD	EUO	HQV	GA	IN	JLC	WP	FK	SB	MX
J	AFBQ	JED	OWV	GI	UP	RHL	YN	SC	XM	TK
K	VABS	OMK	JEC	QF	UX	HYP	TR	LD	NG	IW
L	LCTR	HYP	FAV	SX	UG	DJO	WN	QK	EP	IM
M	KRTU	BJL	NEV	HY	OW	GCA	QM	SX	FD	IP
N	OJRH	CBP	QWY	KD	IS	XTN	LU	EF	GV	AM
O	UKIG	DCO	SYR	AX	JL	VMN	TB	HF	QP	WE
P	YIGB	RFP	NUC	SV	HM	DEK	TQ	XW	LJ	OA
Q	GMLO	XDS	WYK	TI	AH	RNJ	VF	EU	PC	QB
R	XWCG	MAF	LSK	TN	DB	QHI	RE	VY	JO	PU
S	BKQV	CFP	HXN	LE	TD	IOM	RU	YJ	AS	WG
T	HLMX	BKG	RQP	CI	WT	JFD	EN	SA	YO	VU
U	MTNR	SPE	KWQ	UG	JY	VFH	BD	XA	IO	CL
V	IEGN	XFC	SQT	KW	YV	JRA	HM	UD	OL	PB
W	KSCM	IAP	QYR	FT	WL	DVG	NE	OJ	BH	UX
X	LFDW	UNB	IRO	KC	JX	QPG	TH	AM	VS	YE
Y	OTLH	GQB	KSY	WC	JE	IFU	MV	XD	NP	AR

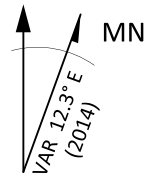
**NAVAIDS**

<b>Id</b>	<b>Name</b>	<b>Channel</b>	<b>Position</b>	<b>Elevation</b>
BCE	Bryce Canyon	75	N3741.35 W11218.23	9040
BIH	Bishop	33	N3722.62 W11821.99	4114
BLD	Boulder	114	N3559.75 W11451.82	3650
BTY	Beatty	94	N3648.54 W11644.86	2925
CDC	Cedar City	120	N3747.24 W11304.90	5463
DAG	Daggett	79	N3457.75 W11634.69	1760
EED	Needles	99	N3445.96 W11428.43	650
GFS	Goffs	91	N3507.87 W11510.59	4019
GRL	Groom Lake	18	N3713.91 W11548.16	4475
HEC	Hector	74	N3447.83 W11627.78	1854
ILC	Wilson Creek	110	N3815.02 W11423.65	9318
INS	Creech AFB	87	N3635.20 W11540.12	3101
LAS	McCarran Intl	116	N3604.78 W11509.59	2142
LSV	Nellis	12	N3614.68 W11501.50	1864
MLF	Milford	58	N3821.62 W11300.79	4977
MMM	Mormon Mesa	90	N3646.16 W11416.65	2120
MVA	Mina	98	N3833.92 W11801.97	7860
OAL	Coale Dale	124	N3800.20 W11746.23	4800
PGS	Peach Springs	57	N3537.48 W11332.67	4754
TPH	Tonopah Muni	119	N3801.84 W11702.01	5330
TQQ	Silverbow	77	N3748.00 W11647.00	5500
UTI	St George	23	N3705.29 W11335.53	2871





RWY 3L-21R  
 PCN 46 R/C/W/T  
 RWY 3R-21L  
 PCN 51 R/C/W/T  
 2017



PAR	RWY	CAT	MINIMA	ARP	ELEV	Scale
	21L	A B D E	2057 - 0.8 200 (200-0.8/1.6) GS 3°	36° 14.060° N 115° 01.058° W	1857 [ft] 566 [m]	0 300 500
	3R	A B D E	2057 - 0.8 200 (200-0.8/1.6) GS 3°			0 300 600 900 1200 1500 [m]
	21R	A C D E	2257 - 1.2 350 (350-1.2/1.6)			0 1000 2000 3000 4000 5000 [ft]
	3L	A C D E	2257 - 1.2 350 (350-1.2/1.6)			

RWY	TORA	TODA	ASDA	LDA	PSN	THR	ALS
21L	10051 [ft] 3063 [m]	11051 [ft] 3368 [m]	11051 [ft] 3368 [m]	10051 [ft] 3063 [m]	36°14.043' N	115°01.018' W	⊕
3R	10120 [ft] 3084 [m]	11120 [ft] 3398 [m]	11120 [ft] 3398 [m]	10120 [ft] 3084 [m]	36°13.029' N	115°02.038' W	

ATIS	NELLIS GROUND	NELLIS TOWER	NELLIS CONTROL	TACAN	ILS RWY 21L	NELLIS EAST	NELLIS WEST
270.100 MHz	275.800   121.800	327.000   132.55	317.525	LSV 12X	109.10 Mhz	384.400	385.000

# FYTTR THREE DEPARTURE IFR CHART | VALID 2014 LAS VEGAS, NEVADA

ATIS  
 270.100  
 NELLIS GROUND  
 275.800  
 NELLIS TOWER  
 327.000  
 NELLIS CONTROL  
 317.525  
 NELLIS DEP/APP EAST  
 384.400  
 BLACKJACK  
 377.800

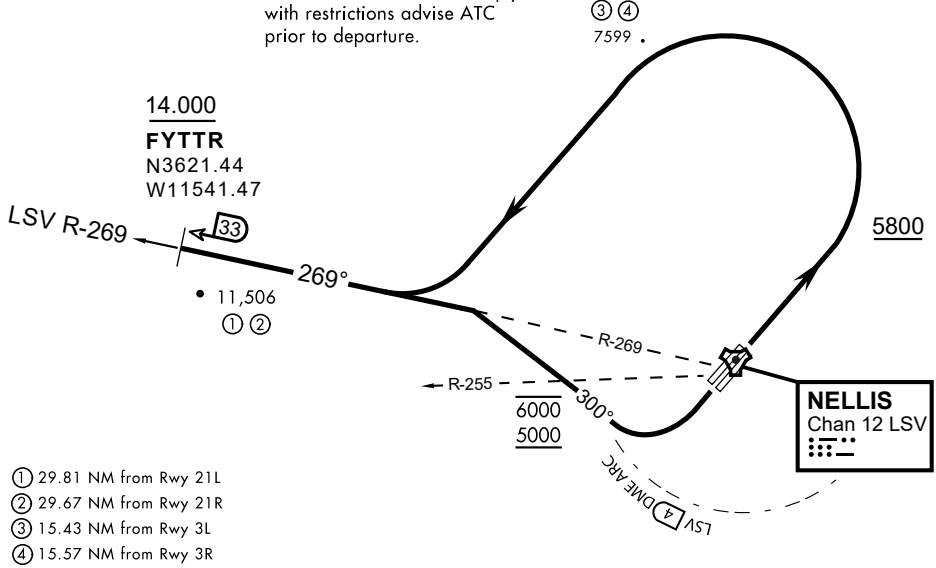


Rwy	Knots	60	120	180	240	300	360
3L (a)	V/V(fpm)	394	788	1182	1576	1970	2364
3R (a)	V/V(fpm)	392	784	1176	1568	1960	2352
21L (b)	V/V(fpm)	388	776	1164	1552	1940	2328
21R (b)	V/V(fpm)	390	780	1170	1560	1950	2340

Minimum Climb Rate

- (a) to 9300
- (b) to 13 500

CAUTION: If unable to comply with restrictions advise ATC prior to departure.



- (1) 29.81 NM from Rwy 21L
- (2) 29.67 NM from Rwy 21R
- (3) 15.43 NM from Rwy 3L
- (4) 15.57 NM from Rwy 3R

## DEPARTURE ROUTE DESCRIPTION

### TAKEOFF RWY 3L/R

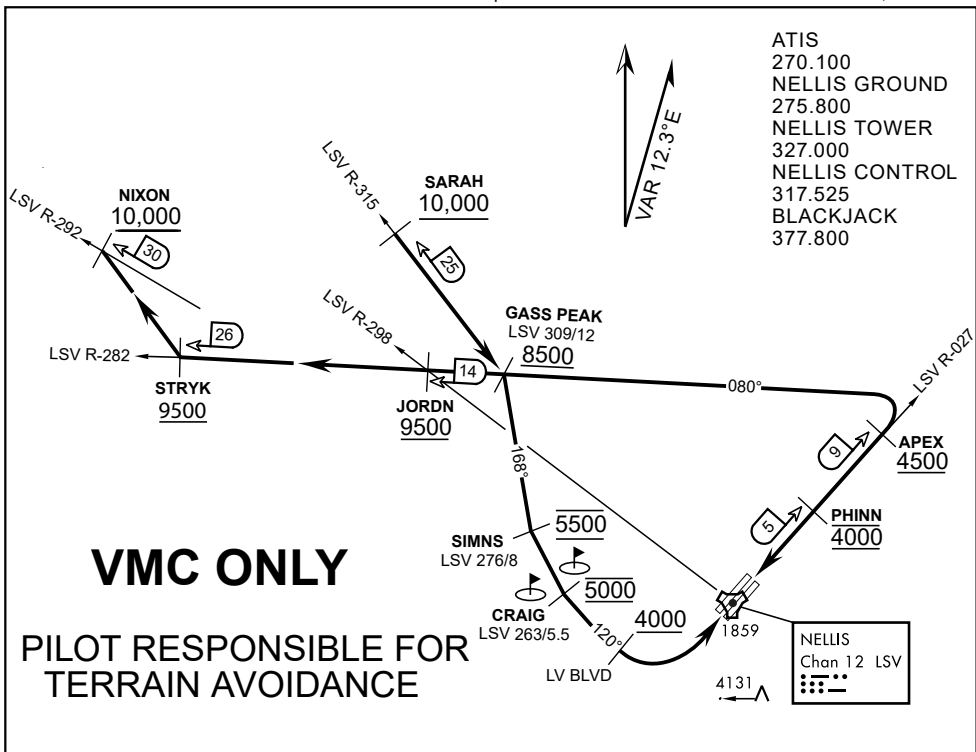
- Fly runway heading until reaching 5,800'.
- Then climbing left turn to intercept LSV TACAN R-269 outbound.
- Cross FYTTR at or above 14,000' or as assigned, then via assigned route.

### TAKEOFF RWY 21L/21R

- Turn right to intercept LSV TACAN R-269 outbound.
- Remain within LSV 4 DME until joining LSV R-269
- Cross R-255 between 5,000' and 6,000'.
- Cross FYTTR at or above 14,000' or as assigned, then via assigned route.

### NOISE ABATEMENT PROCEDURES:

Fly according Nellis Noise Abatement instructions as published



ATIS  
 270.100  
 NELLIS GROUND  
 275.800  
 NELLIS TOWER  
 327.000  
 NELLIS CONTROL  
 317.525  
 BLACKJACK  
 377.800

**VMC ONLY**

**PILOT RESPONSIBLE FOR TERRAIN AVOIDANCE**

**APPROACH ROUTE DESCRIPTION**

**APPROACH RWY 3L/R**

Cross STRYK at or above 9,500' MSL, proceed direct GASS PEAK. Cross JORDN at or above 9,500' MSL, cross GASS PEAK at or above 8,500' MSL. Proceed direct SIMNS and cross at 5,500' MSL. Cross Las Vegas Blvd at or above 4,000' MSL then to 3,500' MSL for Initial. Remain within 4 DME if LSV on turn to final.

**VFR STRAIGHT-IN RWY 3L/R**

Depart CRAIG & descend to be at 3,000' MSL by Las Vegas Blvd. Do not descend below 3,000' MSL until within 5 DME of LSV or 4 NM of the runway on turn to final.

**APPROACH RWY 21L/R**

Cross STRYK at or above 9,500' MSL, proceed direct GASS PEAK. Cross JORDN at or above 9,500' MSL, cross GASS PEAK at or above 8,500' MSL. Cross APEX at or above 4,500' MSL then direct 5NM initial. Descend to cross PHINN at 4,000' MSL, Inside 5 NM descend to 3,500' MSL.

**VFR STRAIGHT-IN RWY 21L/R**

Cross APEX at 4,000' MSL. Descend to be at 3,000' MSL at PHINN. Descend to 3,000' MSL at LSV 027/5.

**RANGE 63B EXIT**

**SOUTH:** Via NIXON at or above 10,000' MSL, then direct STRYK.

**EAST:** Via SARAH at or above 10,000' MSL, then direct GASS PEAK.