

**MISSION DATA CARD**

OPORD		Callsign		Mission		Date/Time	
3433/2024		Edelweiss 1		Training		012206DEC24	
Task						Freq	
AO						264.15	
Departure				Recovery			
FYTTR THREE				STRYK			
#	Callsign	Pilot		IFF	TCN	LSR	NET
-1	Edelweiss 1-1	Beethovenz		1711	1Y	1711	

**LOADOUT**

A/A						GUN	
A/G						CHF	
POD						FLR	
TKS						FUEL	

**TOLD**

	Takeoff	Target	Joker	Bingo	Land
FUEL	7163			3000	

**AIRBASES**

	Name	TCN	ATIS	GND	TWR	RWY	Elev	ILS
Dep	Nellis AFB	12X	270.1	275.8	327.0	21L	1850	109.1
Arr	Nellis AFB	12X	270.1	275.8	327.0	21L	1850	109.1
Div	Creech AFB	87X	290.45	275.8	360.6			

**FLIGHTPLAN**

#	Name	Navaid/Coords/DME	ALT	TOT
1	FYTTR	LSV 269/33 (N36 21.440 W115 41.470)		
2	Creech AFB	N36 35.200 W115 40.120		
3	STRYK	LSV 282/26 (N36 25.620 W115 30.700)		
4	Nellis	N36 14.680 W115 01.500		

**RADIO CHANNELS**

#	Freq	Name
1		Flight/Squadron specific
2	289.4	Nellis Clearance Delivery
3	275.8	Nellis Ground
4	327.0	Nellis Tower
5	385.4	Nellis Approach/Departure West
6	273.55	Nellis Approach/Departure East
7	317.525	Nellis Control -- Sally
8	254.4	Nellis Control-- Lee
9	305.6	SOF Bullseye
10	343.725	EMERGENCY SINGLE FRQ
11	270.1	Nellis ATIS
12	360.625	Creech AFB Tower
13	250.1	HAVE QUICK 13
14	251.1	HAVE QUICK 14
15	252.1	HAVE QUICK 15
16	377.8	Blackjack
17	265.0	KC-135 AR-641A
18	360.8	KC-135MPRS AR-635
19	319.8	KC-135MPRS AR-625
20	300.05	KC-135 AR-231V

**RAMROD**

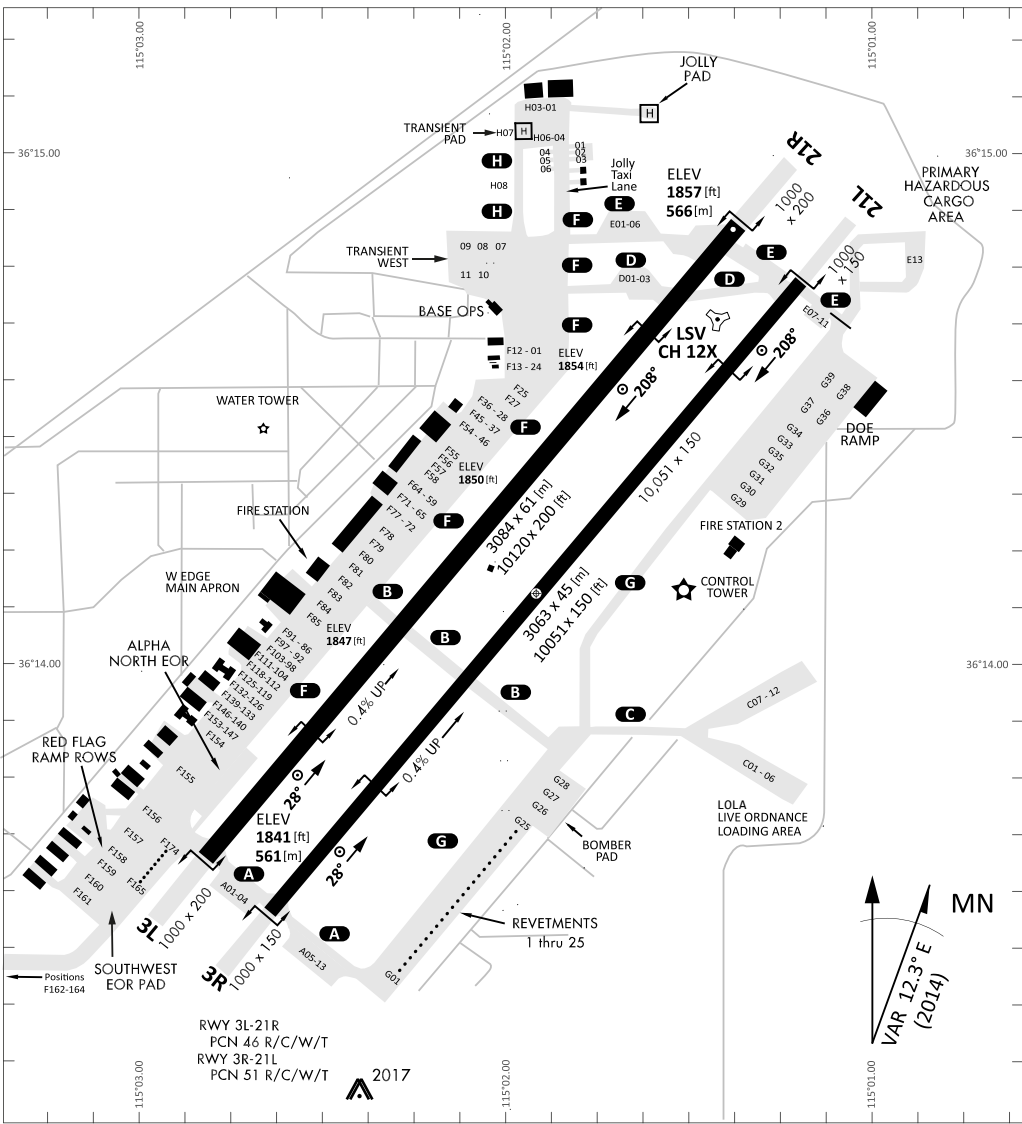
0	1	2	3	4	5	6	7	8	9
S	C	R	A	M	B	L	I	N	G

**KTC 1400 C**

	0	1	2	3	4	5	6	7	8	9
A	LQGN	VED	RTU	HW	KM	OAB	FJ	PS	CX	YI
B	MREF	BWG	YIL	PA	HD	OVU	CK	XT	QS	NJ
C	VJQE	NLI	BKA	CX	GU	WPM	DT	SO	FH	YR
D	JTLI	RMN	EXY	GS	FC	HQB	AD	UV	PO	KW
E	XANB	STU	HKR	QW	VY	FJI	CO	DL	GE	PM
F	BMFV	SQK	CWH	LG	XI	RTE	YU	AP	DN	JO
G	AMHN	XCU	PWR	IE	JT	OQB	SG	DL	KY	VF
H	LVYT	DXJ	QBH	IC	OE	KNP	MS	AR	GU	WF
I	OUNT	IXM	WDS	YH	RA	EKF	LQ	VP	CB	JG
J	DFXR	YHI	ECJ	WA	BN	MSV	PK	LO	TU	GQ
K	CBDI	UHM	TPX	WA	GO	LVE	FR	NY	JK	QS
L	EFTR	NSW	ALM	YK	DX	OVU	QH	BG	CP	IJ
M	HKGP	JFT	UMQ	NR	DE	VYA	CX	WS	LO	IB
N	XVIH	EKL	AMN	DR	OC	PSF	JQ	UW	BG	YT
O	FQPI	WRV	EMO	TS	KD	HYL	CB	JA	GX	UN
P	EKFW	BID	TMQ	OU	LG	XAC	SJ	RY	PV	NH
Q	CUOT	WXV	GNH	PS	DB	QMK	RE	FL	AI	YJ
R	KTWE	IAQ	MBH	YV	UX	POL	GF	CS	RJ	ND
S	KDOY	GJW	IAP	NU	QV	SFT	RL	XH	BE	CM
T	NGCL	OBA	ETU	RI	QD	WKJ	VF	XS	PM	HY
U	SQFE	YAB	XVD	GI	RU	MWJ	OH	PC	NK	LT
V	NYDS	BAW	LPI	JR	FG	OHK	TM	XU	VQ	EC
W	CBOI	QSX	LRU	GJ	TA	HKV	PF	NY	DE	WM
X	GQFJ	VNH	SKP	YC	LA	IRU	DE	TO	WB	MX
Y	HCEK	BLP	VJM	TR	DI	SYW	NO	GU	XF	QA

**NAVAIDS**

<b>Id</b>	<b>Name</b>	<b>Channel</b>	<b>Position</b>	<b>Elevation</b>
BCE	Bryce Canyon	75	N3741.35 W11218.23	9040
BIH	Bishop	33	N3722.62 W11821.99	4114
BLD	Boulder	114	N3559.75 W11451.82	3650
BTY	Beatty	94	N3648.54 W11644.86	2925
CDC	Cedar City	120	N3747.24 W11304.90	5463
DAG	Daggett	79	N3457.75 W11634.69	1760
EED	Needles	99	N3445.96 W11428.43	650
GFS	Goffs	91	N3507.87 W11510.59	4019
GRL	Groom Lake	18	N3713.91 W11548.16	4475
HEC	Hector	74	N3447.83 W11627.78	1854
ILC	Wilson Creek	110	N3815.02 W11423.65	9318
INS	Creech AFB	87	N3635.20 W11540.12	3101
LAS	McCarran Intl	116	N3604.78 W11509.59	2142
LSV	Nellis	12	N3614.68 W11501.50	1864
MLF	Milford	58	N3821.62 W11300.79	4977
MMM	Mormon Mesa	90	N3646.16 W11416.65	2120
MVA	Mina	98	N3833.92 W11801.97	7860
OAL	Coale Dale	124	N3800.20 W11746.23	4800
PGS	Peach Springs	57	N3537.48 W11332.67	4754
TPH	Tonopah Muni	119	N3801.84 W11702.01	5330
TQQ	Silverbow	77	N3748.00 W11647.00	5500
UTI	St George	23	N3705.29 W11335.53	2871



RWY 3L-21R  
 PCN 46 R/C/W/T  
 RWY 3R-21L  
 PCN 51 R/C/W/T  
 2017

PAR	RWY	CAT	MINIMA		ARP	ELEV	Scale 1:35'500	
	21L	A B D E	2057 - 0.8 200	(200-0.8/1.6) GS 3°	36° 14.060° N 115° 01.058° W	1857 [ft] 566 [m]	0	300
	3R	A B D E	2057 - 0.8 200	(200-0.8/1.6) GS 3°			0	1000
	21R	A C D E	2257 - 1.2 350	(350-1.2/1.6)			0	1000
	3L	A C D E	2257 - 1.2 350	(350-1.2/1.6)			0	1000

RWY	TORA	TODA	ASDA	LDA	PSN	THR	ALS
21L	10051 [ft] 3063 [m]	11051 [ft] 3368 [m]	11051 [ft] 3368 [m]	10051 [ft] 3063 [m]	36°14.043' N	115°01.018' W	⊕
3R	10120 [ft] 3084 [m]	11120 [ft] 3398 [m]	11120 [ft] 3398 [m]	10120 [ft] 3084 [m]	36°13.029' N	115°02.038' W	

ATIS	NELLIS GROUND	NELLIS TOWER	NELLIS CONTROL	TACAN	ILS RWY 21L	NELLIS EAST	NELLIS WEST
270.100 MHz	275.800   121.800	327.000   132.55	317.525	LSV 12X	109.10 Mhz	384.400	385.000

**FYTTR THREE DEPARTURE** IFR CHART | VALID 2014 LAS VEGAS, NEVADA

ATIS  
270.100  
NELLIS GROUND  
275.800  
NELLIS TOWER  
327.000  
NELLIS CONTROL  
317.525  
NELLIS DEP/APP EAST  
384.400  
BLACKJACK  
377.800

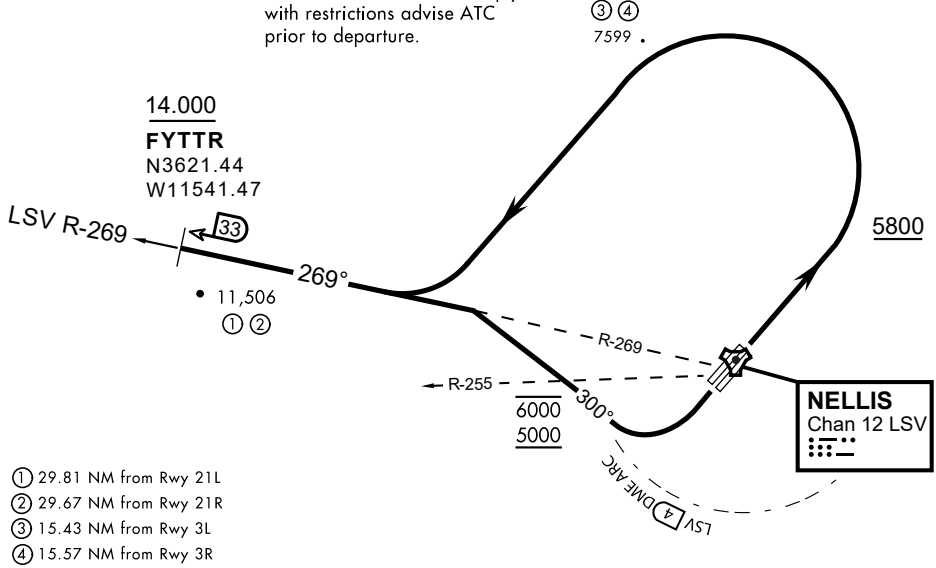


Rwy	Knots	60	120	180	240	300	360
3L (a)	V/V(fpm)	394	788	1182	1576	1970	2364
3R (a)	V/V(fpm)	392	784	1176	1568	1960	2352
21L (b)	V/V(fpm)	388	776	1164	1552	1940	2328
21R (b)	V/V(fpm)	390	780	1170	1560	1950	2340

Minimum Climb Rate

- (a) to 9300
- (b) to 13 500

CAUTION: If unable to comply with restrictions advise ATC prior to departure.



- (1) 29.81 NM from Rwy 21L
- (2) 29.67 NM from Rwy 21R
- (3) 15.43 NM from Rwy 3L
- (4) 15.57 NM from Rwy 3R

**DEPARTURE ROUTE DESCRIPTION**

TAKEOFF RWY 3L/R

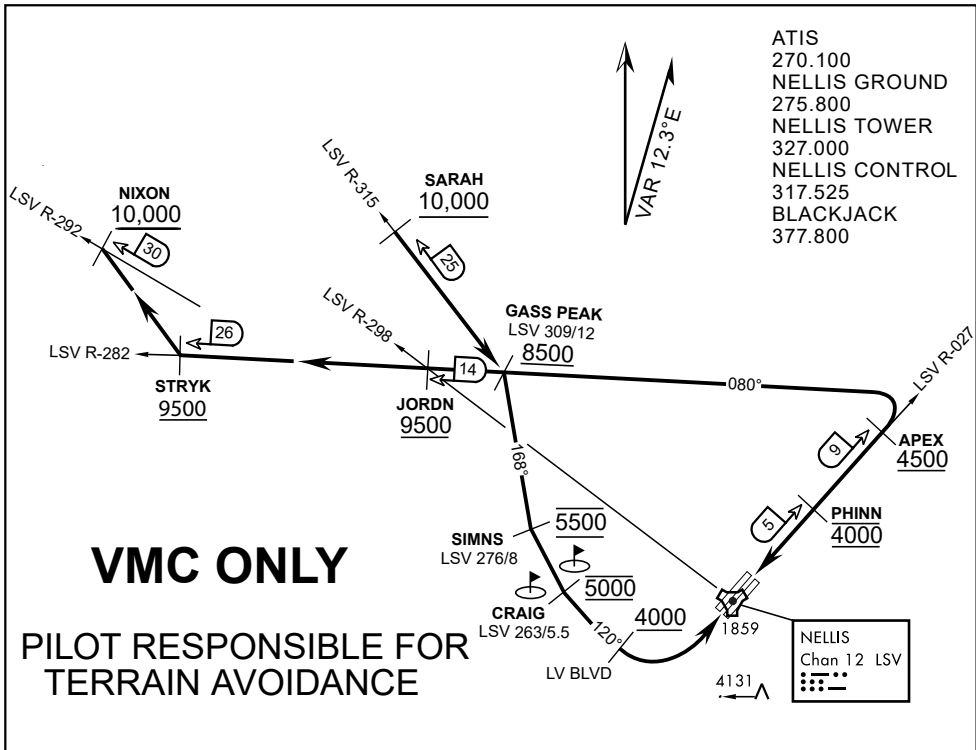
- Fly runway heading until reaching 5,800'.
- Then climbing left turn to intercept LSV TACAN R-269 outbound.
- Cross FYTTR at or above 14,000' or as assigned, then via assigned route.

TAKEOFF RWY 21L/21R

- Turn right to intercept LSV TACAN R-269 outbound.
- Remain within LSV 4 DME until joining LSV R-269
- Cross R-255 between 5,000' and 6,000'.
- Cross FYTTR at or above 14,000' or as assigned, then via assigned route.

**NOISE ABATEMENT PROCEDURES:**

Fly according Nellis Noise Abatement instructions as published



**APPROACH ROUTE DESCRIPTION**

**APPROACH RWY 3L/R**

Cross STRYK at or above 9,500' MSL, proceed direct GASS PEAK. Cross JORDN at or above 9,500' MSL, cross GASS PEAK at or above 8,500' MSL. Proceed direct SIMNS and cross at 5,500' MSL. Cross Las Vegas Blvd at or above 4,000' MSL then to 3,500' MSL for Initial. Remain within 4 DME if LSV on turn to final.

**VFR STRAIGHT-IN RWY 3L/R**

Depart CRAIG & descend to be at 3,000' MSL by Las Vegas Blvd. Do not descend below 3,000' MSL until within 5 DME of LSV or 4 NM of the runway on turn to final.

**APPROACH RWY 21L/R**

Cross STRYK at or above 9,500' MSL, proceed direct GASS PEAK. Cross JORDN at or above 9,500' MSL, cross GASS PEAK at or above 8,500' MSL. Cross APEX at or above 4,500' MSL then direct 5NM initial. Descend to cross PHINN at 4,000' MSL, Inside 5 NM descend to 3,500' MSL.

**VFR STRAIGHT-IN RWY 21L/R**

Cross APEX at 4,000' MSL. Descend to be at 3,000' MSL at PHINN. Descend to 3,000' MSL at LSV 027/5.

**RANGE 63B EXIT**

**SOUTH:** Via NIXON at or above 10,000' MSL, then direct STRYK.  
**EAST:** Via SARAH at or above 10,000' MSL, then direct GASS PEAK.





INDIAN SPRINGS, NEVADA

TACAN INS Chan 87	APCH CRS 065°	Rwy ldg TDZE 3133	9002 3113
		Arpt Elev 3113	

INDIAN SPRINGS AF AUX (KINS)

**▼** \* MISSED APPROACH: Straight ahead to INS TACAN, intercept INS R-outbound, cross 17 DME at or above 9500, then direkt KSV TACAN 114

NELLIS CON

CREECH AFB TOWER  
118.30 60.60

GND CON

**NOT FOR CIVIL USE**

FOR USE UNDER BASIC VFR  
WEATHER MINIMUMS ONLY

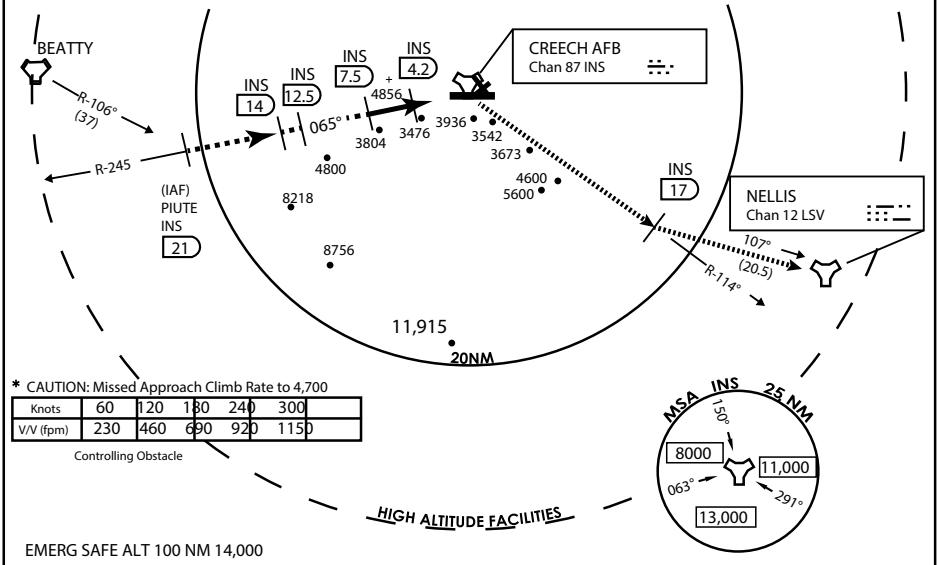
PILOT IS RESPONSIBLE FOR TERRAIN/OBSTACLE AVOIDANCE AND APPROPRIATE VFR CLOUD CLEARANCE FOR ALL

**CAUTION:** Descent gradients are greater than allowed under standard TERPS criteria and inbound course does not meet straight-in criteria

**CAUTION:** Final approach course crosses Runway centerline at MIDFIELD. Maneuvering left of course required prior to landing. Do not Maneuver farther north than the INS R- 258

Modified by viaBog 66 for use with DCS  
NOT FOR REAL LIFE NAVIGATION

Modified by viaBog 66 for use with DCS  
NOT FOR REAL LIFE NAVIGATION



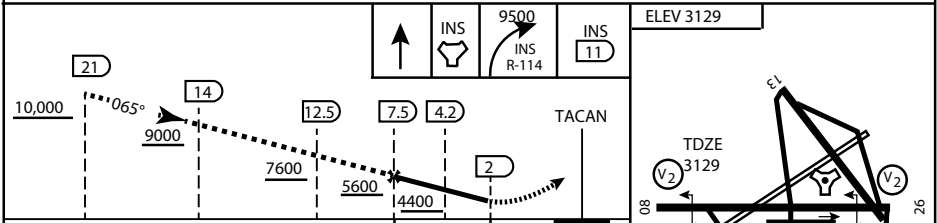
\* CAUTION: Missed Approach Climb Rate to 4,700

Knots	60	120	180	240	300
V/V (fpm)	230	460	690	920	1150

Controlling Obstacle

HIGH ALTITUDE FACILITIES

EMERG SAFE ALT 100 NM 14,000



CATEGORY	A	B	C	D	E
S-8	3760-1 1/2	627 (700-1 1/2)	3760-1 3/4 627 (700-1 3/4)	3760-2 627 (700-2)	3760-2 1/4 627 (700-2 1/4)
CIRCLING	NOT AUTHORIZED				

ELEV 3129

3165

065° 6.3NM from FAF

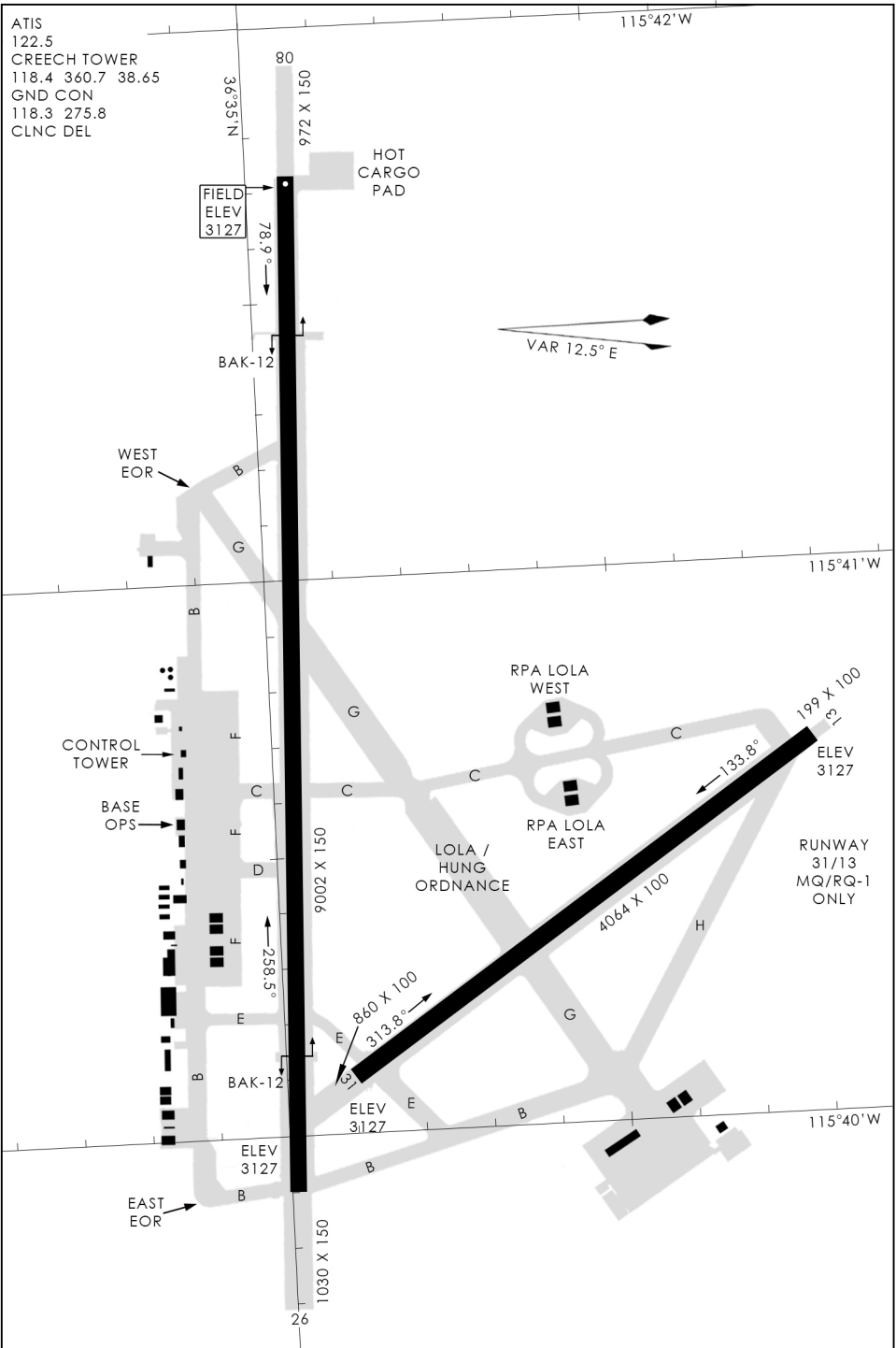
MIRL Rwy 8-26

CITY OF INDIAN, NEVADA

INDIAN SPRINGS AF AUX (KINS)

(FOR DAY VFR USE ONLY)





476 vFG JAN 2019

476 vFG JAN 2019