

MISSION DATA CARD

OPORD		Callsign		Mission		Date/Time		
3428/2024		Monster 1		Training		282000NOV24		
Task	MAVERICK TRAINING					Freq		
AO	R64					132.15		
Departure				Recovery				
FYTTR LOW				STRYK				
#	Callsign		Pilot		IFF	TCN	LSR	NET
-1	Monster 1-1		addiks		1411	1Y	1611	21/01
-2	Monster 1-2		Toolface		1412	64Y	1612	21/02
-3	Monster 1-3		Stoner		1413	64X	1613	21/03

LOADOUT

A/A	A9M				GUN	100% CM	
A/G	7M282L, 4xA65D				CHF	120	
POD	A184, TGP				FLR	360	
TKS					FUEL	75%	

TOLD

	Takeoff	Target	Joker	Bingo	Land
FUEL	8315				

AIRBASES

	Name	TCN	ATIS	GND	TWR	RWY	Elev	ILS
Dep	Nellis AFB	12X	270.1	275.8	327.0	21L	1850	109.1
Arr	Nellis AFB	12X	270.1	275.8	327.0	21L	1850	109.1
Div	Creech AFB	87X	290.45	275.8	360.6			

FLIGHTPLAN

#	Name	Navaid/Coords/DME	ALT	TOT
1	FYTTR	LSV 269/33 (N36 21.440 W115 41.470)	12000	
2	AR641A.1	N37 28 W114 39		
3	AR641A.2	N36 34 W113 05		
4	STRYK	LSV 282/26 (N36 25.620 W115 30.700)	9500	
5	GASS PEAK	LSV 309/12 (N36 24.140 W115 10.660)	8500	
6	APEX	LSV 027/09 (N36 21.580 W114 54.340)	4500	
7	SIMNS	LSV 276/8 (N36 17.340 W115 10.750)	5500	
8	CRAIG	LSV 263/5.5 (N36 15.250 W115 08.270)	5000	
9	Nellis	N36 14.680 W115 01.500		

COMMS

Radio	Usage
1	132.15
2	11 - 3 - 4 - 16 - 11 - 4 - 3
3	32.00

NOTES

A10MAV02 - TGP
A10MAV01 - HUD

SUPPORT**Tanker**

Callsign	TCN	Freq	ALT	TAS
TEXACO 3	22Y	300.05	15000	280
Pos	AR-231V: BTY 126/37 (N3620 W11614)			

OTHER FLIGHTS

Callsign	Mission	Airframe	Freq	TCN	Grpld	Laser
Raptor 1	Training	4x F-16C	134.0	1/64		162X
	AO	BFM Range	Task	BFM / Fox2		
Nazgul 6	Training	4x F-15E	262.45	1/64		156X
	AO	Range 66	Task	CAS Training		

RADIO CHANNELS

#	Freq	Name
1		Flight/Squadron specific
2	289.4	Nellis Clearance Delivery
3	275.8	Nellis Ground
4	327.0	Nellis Tower
5	385.4	Nellis Approach/Departure West
6	273.55	Nellis Approach/Departure East
7	317.525	Nellis Control -- Sally
8	254.4	Nellis Control-- Lee
9	305.6	SOF Bullseye
10	343.725	EMERGENCY SINGLE FRQ
11	270.1	Nellis ATIS
12	360.625	Creech AFB Tower
13	250.1	HAVE QUICK 13
14	251.1	HAVE QUICK 14
15	252.1	HAVE QUICK 15
16	377.8	Blackjack
17	265.0	KC-135 AR-641A
18	360.8	KC-135MPRS AR-635
19	319.8	KC-135MPRS AR-625
20	300.05	KC-135 AR-231V

RAMROD

0	1	2	3	4	5	6	7	8	9
A	N	G	I	O	S	P	E	R	M

KTC 1400 C

	0	1	2	3	4	5	6	7	8	9
A	EYTQ	VJR	HWK	GN	LF	BDX	SO	UC	AP	MI
B	GWLI	NPQ	SMJ	UX	EA	RDK	TH	YF	OB	VC
C	CBUD	PHQ	GRW	NJ	ML	KIV	TX	SE	OF	YA
D	XJOE	ACF	NRH	UY	IM	SBK	GT	QV	PW	DL
E	LDNH	VFG	KUW	OE	JM	CPT	IA	SX	QY	BR
F	QAPC	VBR	SJU	GW	KL	TMH	OD	EY	IN	FX
G	BGON	XPR	CSK	HA	FM	IQE	WD	JL	TU	VY
H	JUGA	VRI	HTS	EB	YP	ODF	KX	NW	LM	CQ
I	WPNJ	LRQ	AGM	DS	XI	KYB	UE	HC	OF	TV
J	TBXA	WUC	YVI	HF	DP	KRL	JE	SM	GQ	NO
K	LPUC	FYI	MAH	WQ	TR	JDO	BN	XV	GS	KE
L	QALR	WVG	NMX	IE	HP	JFS	KY	UT	OB	CD
M	UIWM	HRF	TSC	EQ	AB	JNO	LG	VX	KY	PD
N	QSTI	WPA	RHO	ML	VY	UGJ	BF	XE	NK	CD
O	PBTG	JOC	IWA	FY	RK	MEN	LX	QV	DH	SU
P	OVRJ	QWS	CKD	GL	YU	AHI	MX	TP	NF	BE
Q	DRHO	YGV	BXJ	EC	WU	TAI	NS	LP	FK	MQ
R	CAWS	DJX	TIU	LF	YP	GHQ	RK	BO	EN	VM
S	TQPJ	VSG	CAM	EU	WL	YOD	KN	IR	XB	FH
T	OYUN	QJC	TVH	AW	KS	LEI	XB	PR	DF	MG
U	SHQD	BCP	OVK	MF	EY	GWL	JI	RX	TA	NU
V	OWNK	PCM	TVI	RB	FJ	YGU	LE	DH	AS	XQ
W	JCSM	ALG	OWX	YB	DF	VIH	PE	NU	TQ	KR
X	WQYO	TAP	UDI	HS	BK	VGC	RL	MF	XE	NJ
Y	LDSW	YQC	GFB	UT	XH	IPN	OK	MJ	VE	RA

NAVAIDS

Id	Name	Channel	Position	Elevation
BCE	Bryce Canyon	75	N3741.35 W11218.23	9040
BIH	Bishop	33	N3722.62 W11821.99	4114
BLD	Boulder	114	N3559.75 W11451.82	3650
BTY	Beatty	94	N3648.54 W11644.86	2925
CDC	Cedar City	120	N3747.24 W11304.90	5463
DAG	Daggett	79	N3457.75 W11634.69	1760
EED	Needles	99	N3445.96 W11428.43	650
GFS	Goffs	91	N3507.87 W11510.59	4019
GRL	Groom Lake	18	N3713.91 W11548.16	4475
HEC	Hector	74	N3447.83 W11627.78	1854
ILC	Wilson Creek	110	N3815.02 W11423.65	9318
INS	Creech AFB	87	N3635.20 W11540.12	3101
LAS	McCarran Intl	116	N3604.78 W11509.59	2142
LSV	Nellis	12	N3614.68 W11501.50	1864
MLF	Milford	58	N3821.62 W11300.79	4977
MMM	Mormon Mesa	90	N3646.16 W11416.65	2120
MVA	Mina	98	N3833.92 W11801.97	7860
OAL	Coale Dale	124	N3800.20 W11746.23	4800
PGS	Peach Springs	57	N3537.48 W11332.67	4754
TPH	Tonopah Muni	119	N3801.84 W11702.01	5330
TQQ	Silverbow	77	N3748.00 W11647.00	5500
UTI	St George	23	N3705.29 W11335.53	2871



RWY 3L-21R
 PCN 46 R/C/W/T
 RWY 3R-21L
 PCN 51 R/C/W/T
 2017

PAR	RWY	CAT	MINIMA		ARP	ELEV	Scale 1:35'500	
	21L	A B D E	2057 - 0.8 200 (200-0.8/1.6)	GS 3°	36° 14.060° N 115° 01.058° W	1857 [ft] 566 [m]	0 300 600 900 1200 1500 [m]	
	3R	A B D E	2057 - 0.8 200 (200-0.8/1.6)	GS 3°			0 1000 2000 3000 4000 5000 [ft]	
SRA	21R	A C D E	2257 - 1.2 350 (350-1.2/1.6)					
	3L	A C D E	2257 - 1.2 350 (350-1.2/1.6)					

RWY	TORA	TODA	ASDA	LDA	PSN	THR	ALS
21L	10051 [ft] 3063 [m]	11051 [ft] 3368 [m]	11051 [ft] 3368 [m]	10051 [ft] 3063 [m]	36°14.043' N	115°01.018' W	⊕
3R	10120 [ft] 3084 [m]	11120 [ft] 3398 [m]	11120 [ft] 3398 [m]	10120 [ft] 3084 [m]	36°13.029' N	115°02.038' W	

ATIS	NELLIS GROUND	NELLIS TOWER	NELLIS CONTROL	TACAN	ILS RWY 21L	NELLIS EAST	NELLIS WEST
270.100 MHz	275.800 121.800	327.000 132.55	317.525	LSV 12X	109.10 Mhz	384.400	385.000

FYTTR LOW VISUAL OPERATION CHART | VALID 2014

ATIS
270.100
NELLIS GROUND
275.800
NELLIS TOWER
327.000
NELLIS CONTROL
317.525
NELLIS DEP/APP EAST
384.400
BLACKJACK
377.800

CAUTION: If unable to comply with restrictions advise ATC prior to departure.



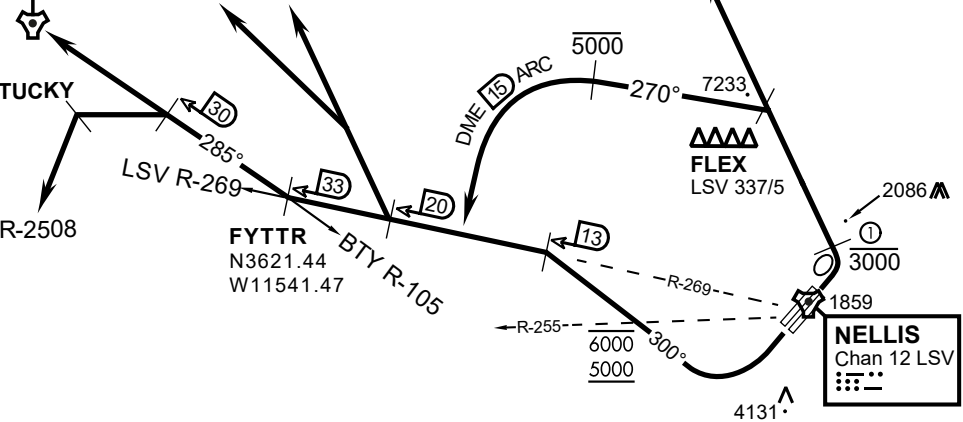
VMC ONLY

PILOT RESPONSIBLE FOR TERRAIN AVOIDANCE

① 4 NM from RWY 3L/R

BEATTY
Chan 94 BTY

RANGE 64/65
RANGE 63



v.1486502 NITTR NAV CHART

DEPARTURE ROUTE DESCRIPTION

TAKEOFF RWY 3L/R:

- Remain below 3,000' MSL until north of Race Track and turned westbound.
- Turn left within 4NM of Nellis direct FLEX. Fly north of FLEX and turn left heading 270°.
- Intercept LSV 15 DME ARC at or below 5,000' MSL.
- ARC south, intercept LSV R-269 outbound. Maintain VFR.

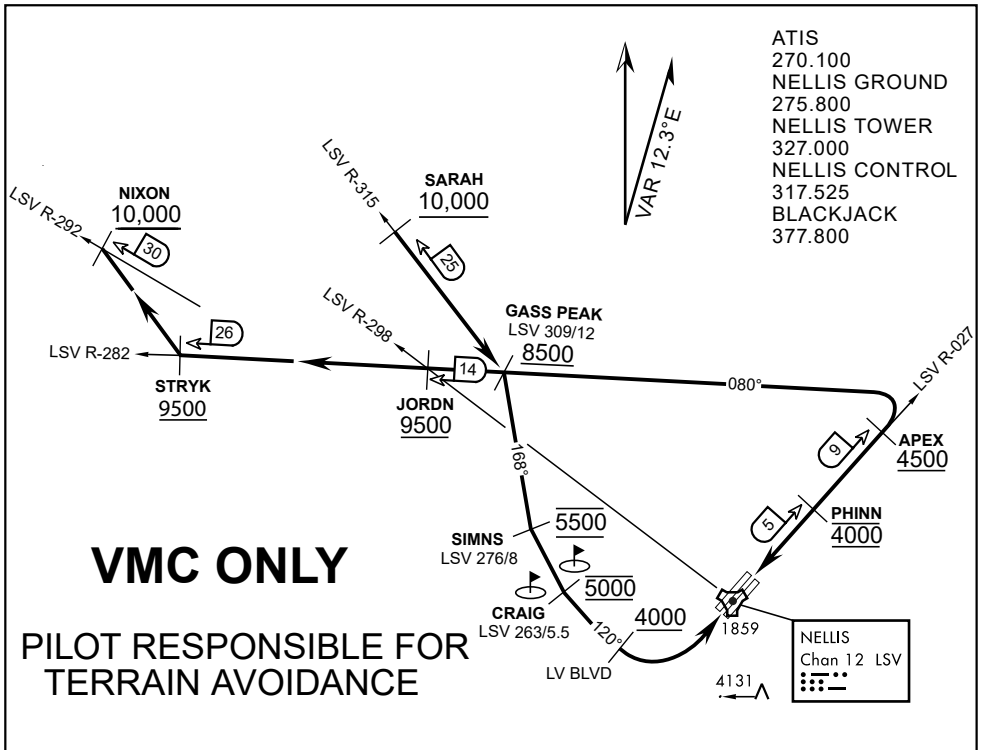
TAKEOFF RWY 21L/21R:

- Follow Noise Abatement Procedures.
- Fly runway heading until past Golf Course, turn right heading 300°.
- Cross LSV R-255 between 5,000' and 6,000' , intercept and proceed outbound on the LSV R-269.Recommend climb to 8,500' MSL or appropriate VFR altitude for overflight of North Las Vegas Training Area. Fly routing for appr. mission/transition.

TRANSITIONS:

- R-4806:** Turn right at the LSV 269/20 direct to assigned ranges.
- BEATTY:** Turn right at FYTTR direct BTY via the BTY R-105
- R-2508:** Turn right at the FYTTR, intercept the BTY 105/30, direct TUCKY, then direct R-2508

FYTTR DEPARTURE AND TRANSITIONS (FYTTR LOW)



- ATIS
- 270.100
- NELLIS GROUND
- 275.800
- NELLIS TOWER
- 327.000
- NELLIS CONTROL
- 317.525
- BLACKJACK
- 377.800

VMC ONLY

PILOT RESPONSIBLE FOR TERRAIN AVOIDANCE

APPROACH ROUTE DESCRIPTION

APPROACH RWY 3L/R

Cross STRYK at or above 9,500' MSL, proceed direct GASS PEAK. Cross JORDN at or above 9,500' MSL, cross GASS PEAK at or above 8,500' MSL. Proceed direct SIMNS and cross at 5,500' MSL. Cross Las Vegas Blvd at or above 4,000' MSL then to 3,500' MSL for Initial. Remain within 4 DME if LSV on turn to final.

VFR STRAIGHT-IN RWY 3L/R

Depart CRAIG & descend to be at 3,000' MSL by Las Vegas Blvd. Do not descend below 3,000' MSL until within 5 DME of LSV or 4 NM of the runway on turn to final.

APPROACH RWY 21L/R

Cross STRYK at or above 9,500' MSL, proceed direct GASS PEAK. Cross JORDN at or above 9,500' MSL, cross GASS PEAK at or above 8,500' MSL. Cross APEX at or above 4,500' MSL then direct 5NM initial. Descend to cross PHINN at 4,000' MSL, Inside 5 NM descend to 3,500' MSL.

VFR STRAIGHT-IN RWY 21L/R

Cross APEX at 4,000' MSL. Descend to be at 3,000' MSL at PHINN. Descend to 3,000' MSL at LSV 027/5.

RANGE 63B EXIT

SOUTH: Via NIXON at or above 10,000' MSL, then direct STRYK.

EAST: Via SARAH at or above 10,000' MSL, then direct GASS PEAK.



INDIAN SPRINGS, NEVADA

TACAN INS Chan 87	APCH CRS 065°	Rwy ldg TDZE 3133	9002 3113
		Arpt Elev 3113	

INDIAN SPRINGS AF AUX (KINS)

▼ * MISSED APPROACH: Straight ahead to INS TACAN, intercept INS R-outbound, cross 17 DME at or above 9500, then direkt KSV TACAN 114

NELLIS CON

CREECH AFB TOWER
118.30 60.60

GND CON

NOT FOR CIVIL USE

FOR USE UNDER BASIC VFR WEATHER MINIMUMS ONLY

PILOT IS RESPONSIBLE FOR TERRAIN/OBSTACLE AVOIDANCE AND APPROPRIATE VFR CLOUD CLEARANCE FOR ALL

CAUTION: Descent gradients are greater than allowed under standard TERPS criteria and inbound course does not meet straight-in criteria

CAUTION: Final approach course crosses Runway centerline at MIDFIELD. Maneuvering left of course required prior to landing. Do not Maneuver farther north than the INS R- 258

Modified by viaBog 66 for use with DCS
NOT FOR REAL LIFE NAVIGATION

Modified by viaBog 66 for use with DCS
NOT FOR REAL LIFE NAVIGATION



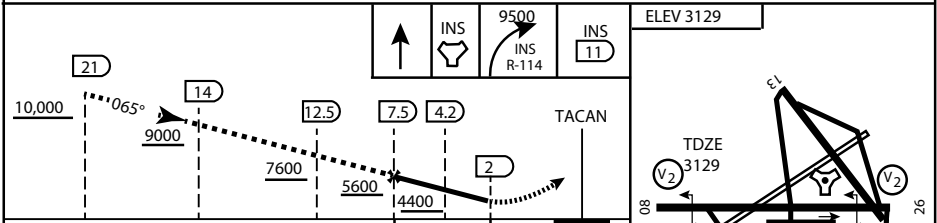
* CAUTION: Missed Approach Climb Rate to 4,700

Knots	60	120	180	240	300
V/V (fpm)	230	460	690	920	1150

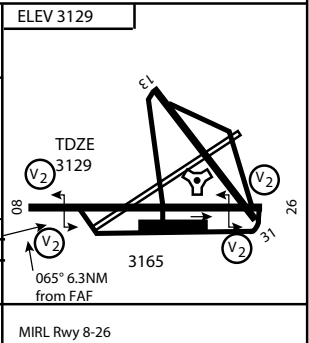
Controlling Obstacle

HIGH ALTITUDE FACILITIES

EMERG SAFE ALT 100 NM 14,000



CATEGORY	A	B	C	D	E
S-8	3760-1 1/2	627 (700-1 1/2)	3760-1 3/4 627 (700-1 3/4)	3760-2 627 (700-2)	3760-2 1/4 627 (700-2 1/4)
CIRCLING	NOT AUTHORIZED				



CITY OF INDIAN, NEVADA

INDIAN SPRINGS AF AUX (KINS)

(FOR DAY VFR USE ONLY)



AIRPORT DIAGRAM

476 VFG

CREECH AFB (KINS)
INDIAN SPRINGS, NEVADA

ATIS
 122.5
 CREECH TOWER
 118.4 360.7 38.65
 GND CON
 118.3 275.8
 CLNC DEL

115°42'W

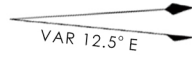
FIELD
 ELEV
 3127

80

972 X 150

HOT CARGO PAD

BAK-12



WEST EOR

115°41'W

476 VFG JAN 2019

CONTROL TOWER
 BASE OPS

RPA LOLA WEST

RPA LOLA EAST

LOLA / HUNG ORDNANCE

RUNWAY
 31/13
 MQ/RQ-1
 ONLY

476 VFG JAN 2019

258.5°

BAK-12

860 X 100

313.8°

199 X 100
ELEV 3127

4064 X 100

115°40'W

ELEV 3127

EAST EOR

1030 X 150

26

AIRPORT DIAGRAM

INDIAN SPRINGS, NEVADA
CREECH AFB (KINS)