

MISSION DATA CARD

OPORD		Callsign		Mission		Date/Time	
3423/2024		T-Rex 2		Training		252030NOV24	
Task	JDAM Training					Freq	
AO	R64					132.25	
Departure				Recovery			
FYTTR LOW				STRYK			
#	Callsign	Pilot		IFF	TCN	LSR	NET
-1	T-Rex 2-1	Crusader		1521	1Y	1651	25/01
-2	T-Rex 2-2	addiks		1522	64Y	1652	25/02

LOADOUT

A/A	A9M				GUN	100% CM	
A/G	2xG38, 2xG54, 2xG31B, 7M282L				CHF	240	
POD	TGP, A184L				FLR	240	
TKS					FUEL	79%	

TOLD

	Takeoff	Target	Joker	Bingo	Land
FUEL	8758				

AIRBASES

	Name	TCN	ATIS	GND	TWR	RWY	Elev	ILS
Dep	Nellis AFB	12X	270.1	275.8	327.0	21L	1850	109.1
Arr	Nellis AFB	12X	270.1	275.8	327.0	21L	1850	109.1

FLIGHTPLAN

#	Name	Navaid/Coords/DME	ALT	TOT
1	FYTTR	LSV 269/33 (N36 21.440 W115 41.470)	10000	
2	T64.13	N36 49.570 W115 37.749		
3	STRYK	LSV 282/26 (N36 25.620 W115 30.700)	10000	
4	GASS PEAK	LSV 309/12 (N36 24.140 W115 10.660)	8500	
5	APEX	LSV 027/09 (N36 21.580 W114 54.340)	4500	
6	Nellis	N36 14.680 W115 01.500	4500	

COMMS

Radio	Usage
1	132.25
2	11 - 3 - 4 - 16 - 11 - 4 - 3
3	32.00

OTHER FLIGHTS

Callsign	Mission	Airframe	Freq	TCN	Grpld	Laser
Outlaw 1	Training	3x AH-64D	133.5	1/64		171X
AO	Range 76	Task	Base Strike			
Edelweiss 6	Training	3x A-10C	134.65	1/64	40	166X
AO	R63, Groom Lake, Elgin/Caliente. AR641A	Task	LCR Check Dry Run			
Edelweiss 5	Training	3x F/A-18C	264.55	12/75	1	175X
AO		Task	Tac-Turns, Formations. IFR Dep/Arr			
Raptor 1	Training	4x F-16C	134.0	1/64		162X
AO	MIXED BVR Training 2:2	Task	MIXED BVR Training 2:2			

RADIO CHANNELS

#	Freq	Name
1		Flight/Squadron specific
2	289.4	Nellis Clearance Delivery
3	275.8	Nellis Ground
4	327.0	Nellis Tower
5	385.4	Nellis Approach/Departure West
6	273.55	Nellis Approach/Departure East
7	317.525	Nellis Control -- Sally
8	254.4	Nellis Control-- Lee
9	305.6	SOF Bullseye
10	343.725	EMERGENCY SINGLE FRQ
11	270.1	Nellis ATIS
12	360.625	Creech AFB Tower
13	250.1	HAVE QUICK 13
14	251.1	HAVE QUICK 14
15	252.1	HAVE QUICK 15
16	377.8	Blackjack
17	265.0	KC-135 AR-641A
18	360.8	KC-135MPRS AR-635
19	319.8	KC-135MPRS AR-625
20	300.05	KC-135 AR-231V

RAMROD

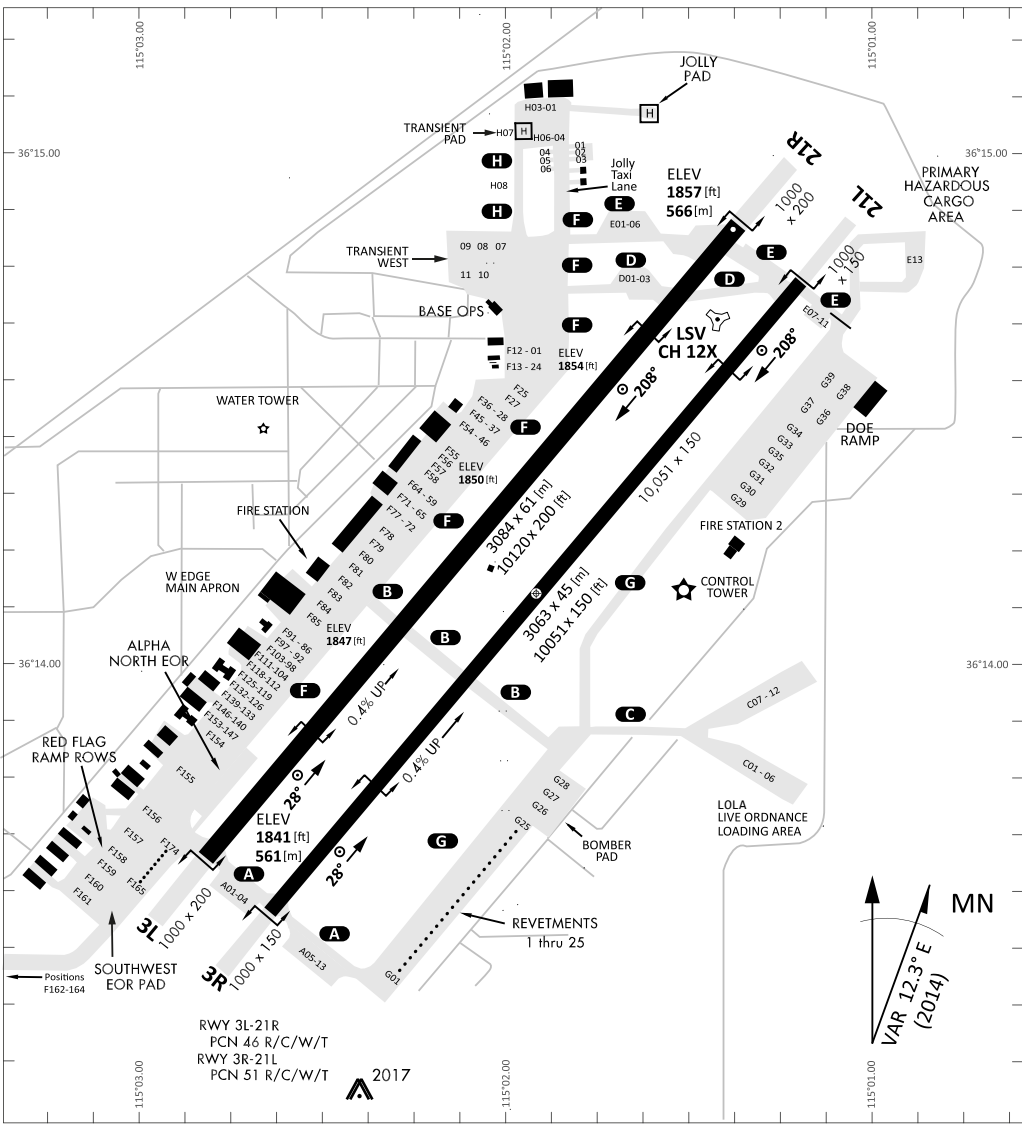
0	1	2	3	4	5	6	7	8	9
H	Y	P	N	O	T	I	Z	E	S

KTC 1400 C

	0	1	2	3	4	5	6	7	8	9
A	MICV	PJX	DYR	QF	HT	BAW	EO	KU	SN	GL
B	IKUC	RLY	ODN	JF	XS	VHE	AW	BG	MP	QT
C	KMOB	RUW	JHS	AQ	TI	PFN	GY	ED	VL	CX
D	BGNY	AHF	MSJ	IV	XU	PET	WO	KC	QL	DR
E	SDNT	LVU	MWH	BQ	PY	COR	GI	EF	AJ	KX
F	FMKY	ICU	SON	LW	VH	PDE	AR	TX	JQ	BG
G	XKNC	OUL	SQE	AW	VH	FDR	MB	PT	IY	JG
H	DRGN	EKV	BPA	LS	MJ	OQC	HY	TU	FI	XW
I	SWXY	CPL	DKU	IG	QM	ETJ	RB	VF	HO	NA
J	MPNR	XFV	VBO	DL	QK	TYI	US	GJ	HC	EA
K	TWBN	VOM	ADL	FY	UG	IPX	HE	SQ	JK	RC
L	JHXX	WNR	QSK	MT	GV	YBP	FD	AC	LU	EO
M	FJPX	WDV	NQA	HR	GB	LIM	UC	SO	KY	TE
N	VMAH	NCX	RFY	LG	KE	TWS	IQ	BD	JU	PO
O	QHGB	KXA	NCV	RI	OW	PYS	TF	UL	DJ	EM
P	FYPG	WOQ	TXN	UA	CE	DLR	HS	JB	KM	VI
Q	DXGA	ROF	ISL	MP	NH	UVY	JK	WT	CQ	EB
R	GYOT	FKS	DEM	JQ	PV	WHN	LX	UA	BI	RC
S	JBXA	ISH	PTM	RO	FN	YQU	EL	WC	VK	GD
T	ILSH	JEV	QRB	YK	TV	NPG	FO	MC	UD	AX
U	KIED	PRL	GHJ	WX	ON	FMT	SU	BY	AQ	VC
V	OJDE	YTB	SVU	CR	WA	XKH	PM	GQ	FI	NL
W	IODG	VKF	NTS	LR	AE	CYU	JX	MP	QH	WB
X	GUFO	WSJ	NTV	EP	BR	IAC	XL	DQ	HM	YK
Y	YMSP	XIQ	JFU	NT	AH	CDE	GR	LO	BW	VK

NAVAIDS

Id	Name	Channel	Position	Elevation
BCE	Bryce Canyon	75	N3741.35 W11218.23	9040
BIH	Bishop	33	N3722.62 W11821.99	4114
BLD	Boulder	114	N3559.75 W11451.82	3650
BTY	Beatty	94	N3648.54 W11644.86	2925
CDC	Cedar City	120	N3747.24 W11304.90	5463
DAG	Daggett	79	N3457.75 W11634.69	1760
EED	Needles	99	N3445.96 W11428.43	650
GFS	Goffs	91	N3507.87 W11510.59	4019
GRL	Groom Lake	18	N3713.91 W11548.16	4475
HEC	Hector	74	N3447.83 W11627.78	1854
ILC	Wilson Creek	110	N3815.02 W11423.65	9318
INS	Creech AFB	87	N3635.20 W11540.12	3101
LAS	McCarran Intl	116	N3604.78 W11509.59	2142
LSV	Nellis	12	N3614.68 W11501.50	1864
MLF	Milford	58	N3821.62 W11300.79	4977
MMM	Mormon Mesa	90	N3646.16 W11416.65	2120
MVA	Mina	98	N3833.92 W11801.97	7860
OAL	Coale Dale	124	N3800.20 W11746.23	4800
PGS	Peach Springs	57	N3537.48 W11332.67	4754
TPH	Tonopah Muni	119	N3801.84 W11702.01	5330
TQQ	Silverbow	77	N3748.00 W11647.00	5500
UTI	St George	23	N3705.29 W11335.53	2871



RWY 3L-21R
 PCN 46 R/C/W/T
 RWY 3R-21L
 PCN 51 R/C/W/T
 2017

PAR	RWY	CAT	MINIMA	ARP	ELEV	Scale
	21L	A B D E	2057 - 0.8 200 (200-0.8/1.6) GS 3°	36° 14.060° N 115° 01.058° W	1857 [ft] 566 [m]	0 300 600 900 1200 1500 [m] 0 1000 2000 3000 4000 5000 [ft]
	3R	A B D E	2057 - 0.8 200 (200-0.8/1.6) GS 3°			
	21R	A C D E	2257 - 1.2 350 (350-1.2/1.6)			
	3L	A C D E	2257 - 1.2 350 (350-1.2/1.6)			

RWY	TORA	TODA	ASDA	LDA	PSN	THR	ALS
21L	10051 [ft] 3063 [m]	11051 [ft] 3368 [m]	11051 [ft] 3368 [m]	10051 [ft] 3063 [m]	36°14.043' N	115°01.018' W	⊕
3R	10120 [ft] 3084 [m]	11120 [ft] 3398 [m]	11120 [ft] 3398 [m]	10120 [ft] 3084 [m]	36°13.029' N	115°02.038' W	

ATIS	NELLIS GROUND	NELLIS TOWER	NELLIS CONTROL	TACAN	ILS RWY 21L	NELLIS EAST	NELLIS WEST
270.100 MHz	275.800 121.800	327.000 132.55	317.525	LSV 12X	109.10 Mhz	384.400	385.000

FYTTR LOW VISUAL OPERATION CHART | VALID 2014

ATIS
270.100
NELLIS GROUND
275.800
NELLIS TOWER
327.000
NELLIS CONTROL
317.525
NELLIS DEP/APP EAST
384.400
BLACKJACK
377.800

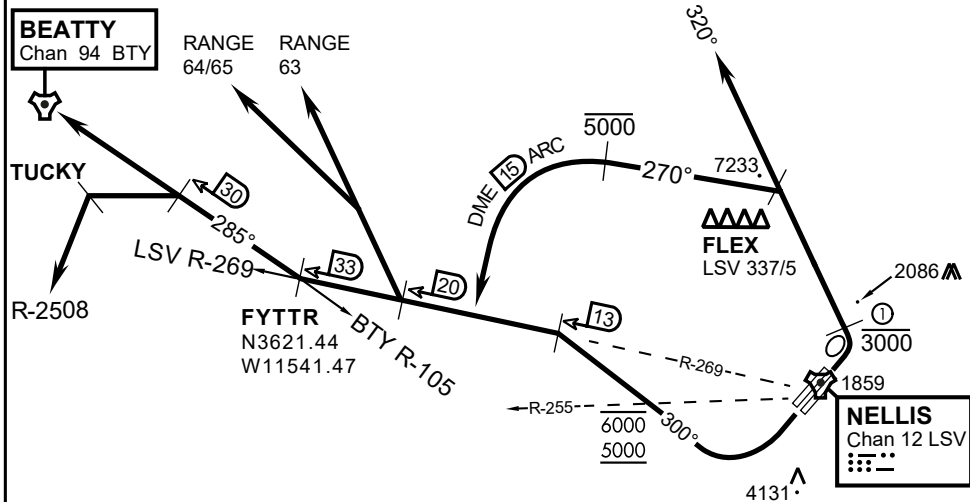
CAUTION: If unable to comply with restrictions advise ATC prior to departure.



VMC ONLY

PILOT RESPONSIBLE FOR TERRAIN AVOIDANCE

① 4 NM from RWY 3L/R



DEPARTURE ROUTE DESCRIPTION

TAKEOFF RWY 3L/R:

- Remain below 3,000' MSL until north of Race Track and turned westbound.
- Turn left within 4NM of Nellis direct FLEX. Fly north of FLEX and turn left heading 270°.
- Intercept LSV 15 DME ARC at or below 5,000' MSL.
- ARC south, intercept LSV R-269 outbound. Maintain VFR.

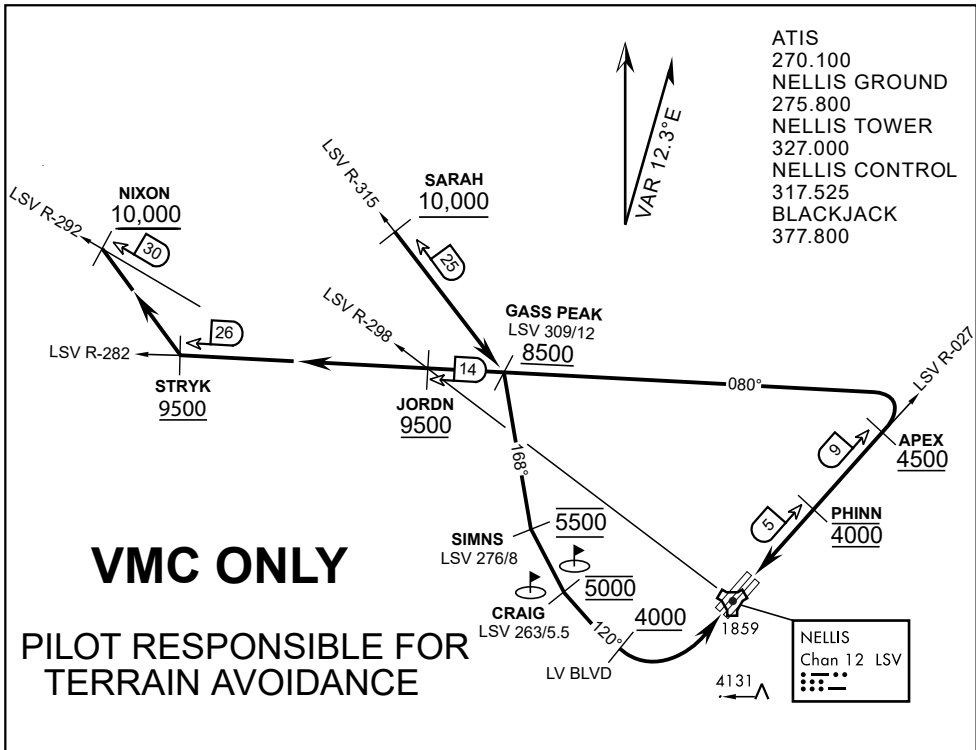
TAKEOFF RWY 21L/21R:

- Follow Noise Abatement Procedures.
- Fly runway heading until past Golf Course, turn right heading 300°.
- Cross LSV R-255 between 5,000' and 6,000' , intercept and proceed outbound on the LSV R-269.Recommend climb to 8,500' MSL or appropriate VFR altitude for overflight of North Las Vegas Training Area. Fly routing for appr. mission/transition.

TRANSITIONS:

- R-4806:** Turn right at the LSV 269/20 direct to assigned ranges.
- BEATTY:** Turn right at FYTTR direct BTY via the BTY R-105
- R-2508:** Turn right at the FYTTR, intercept the BTY 105/30, direct TUCKY, then direct R-2508

FYTTR DEPARTURE AND TRANSITIONS (FYTTR LOW)



- ATIS
- 270.100
- NELLIS GROUND
- 275.800
- NELLIS TOWER
- 327.000
- NELLIS CONTROL
- 317.525
- BLACKJACK
- 377.800

VMC ONLY

PILOT RESPONSIBLE FOR TERRAIN AVOIDANCE

APPROACH ROUTE DESCRIPTION

APPROACH RWY 3L/R

Cross STRYK at or above 9,500' MSL, proceed direct GASS PEAK. Cross JORDN at or above 9,500' MSL, cross GASS PEAK at or above 8,500' MSL. Proceed direct SIMNS and cross at 5,500' MSL. Cross Las Vegas Blvd at or above 4,000' MSL then to 3,500' MSL for Initial. Remain within 4 DME if LSV on turn to final.

VFR STRAIGHT-IN RWY 3L/R

Depart CRAIG & descend to be at 3,000' MSL by Las Vegas Blvd. Do not descend below 3,000' MSL until within 5 DME of LSV or 4 NM of the runway on turn to final.

APPROACH RWY 21L/R

Cross STRYK at or above 9,500' MSL, proceed direct GASS PEAK. Cross JORDN at or above 9,500' MSL, cross GASS PEAK at or above 8,500' MSL. Cross APEX at or above 4,500' MSL then direct 5NM initial. Descend to cross PHINN at 4,000' MSL, Inside 5 NM descend to 3,500' MSL.

VFR STRAIGHT-IN RWY 21L/R

Cross APEX at 4,000' MSL. Descend to be at 3,000' MSL at PHINN. Descend to 3,000' MSL at LSV 027/5.

RANGE 63B EXIT

SOUTH: Via NIXON at or above 10,000' MSL, then direct STRYK.

EAST: Via SARAH at or above 10,000' MSL, then direct GASS PEAK.