

**MISSION DATA CARD**

OPORD		Callsign		Mission		Date/Time	
3422/2024		Edelweiss 6		Training		252000NOV24	
Task	LCR Check Dry Run					Freq	
AO	R63, Groom Lake, Elgin/Caliente, AR641A					134.65	
Departure				Recovery			
FYTTR LOW				STRYK			
#	Callsign	Pilot	IFF	TCN	LSR	NET	
-1	Edelweiss 6-1	Stoner	1761	1Y	1661	40/01	
-2	Edelweiss 6-2	Toolface	1762	64Y	1662	40/02	
-3	Edelweiss 6-3	Marsy	1763	64X	1663	40/03	

**LOADOUT**

A/A	A9M	GUN	100% CM
A/G	4xM82, 7M282L	CHF	240
POD	TGP, A184L	FLR	240
TKS		FUEL	100%

**TOLD**

	Takeoff	Target	Joker	Bingo	Land
FUEL	11087				

**AIRBASES**

	Name	TCN	ATIS	GND	TWR	RWY	Elev	ILS
Dep	Nellis AFB	12X	270.1	275.8	327.0	21L	1850	109.1
Arr	Nellis AFB	12X	270.1	275.8	327.0	21L	1850	109.1
Div	Nellis AFB	12X	270.1	275.8	327.0	21L	1850	109.1

**COMMS**

Radio	Usage
1	134.65
2	11-3-4-16-11-4-3
3	32.00

## NOTES

Dream Four Depature after TnGs

**SUPPORT****Tanker**

Callsign	TCN	Freq	ALT	TAS
TEXACO 1	94Y	265.0	17000	290
Pos	AR-641A: CDC 242/78 (N3728 W11439)			

## OTHER FLIGHTS

Callsign	Mission	Airframe	Freq	TCN	Grpld	Laser
Outlaw 1	Training	3x AH-64D	133.5	1/64		171X
	AO	Range 76	Task	Base Strike		
T-Rex 2	Training	4x A-10C	132.25	1/64	25	165X
	AO	R64	Task	JDAM Training		
Edelweiss 5	Training	3x F/A-18C	264.55	12/75	1	175X
	AO		Task	Tac-Turns, Formations. IFR Dep/Arr		
Raptor 1	Training	4x F-16C	134.0	1/64		162X
	AO	MIXED BVR Training 2:2	Task	MIXED BVR Training 2:2		

**RADIO CHANNELS**

#	Freq	Name
1		Flight/Squadron specific
2	289.4	Nellis Clearance Delivery
3	275.8	Nellis Ground
4	327.0	Nellis Tower
5	385.4	Nellis Approach/Departure West
6	273.55	Nellis Approach/Departure East
7	317.525	Nellis Control -- Sally
8	254.4	Nellis Control-- Lee
9	305.6	SOF Bullseye
10	343.725	EMERGENCY SINGLE FRQ
11	270.1	Nellis ATIS
12	360.625	Creech AFB Tower
13	250.1	HAVE QUICK 13
14	251.1	HAVE QUICK 14
15	252.1	HAVE QUICK 15
16	377.8	Blackjack
17	265.0	KC-135 AR-641A
18	360.8	KC-135MPRS AR-635
19	319.8	KC-135MPRS AR-625
20	300.05	KC-135 AR-231V

**RAMROD**

0	1	2	3	4	5	6	7	8	9
H	Y	P	N	O	T	I	Z	E	S

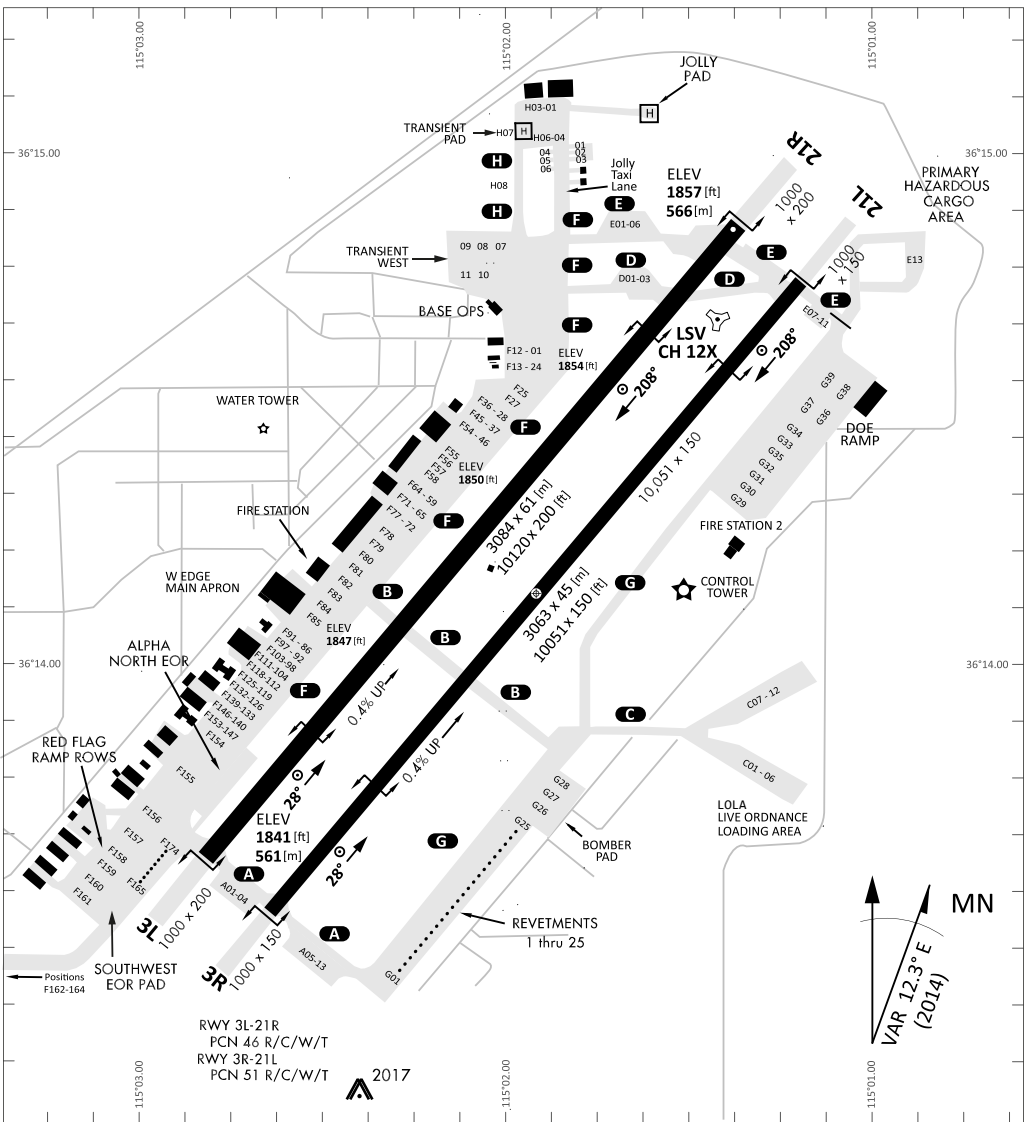
**KTC 1400 C**

	0	1	2	3	4	5	6	7	8	9
A	MICV	PJX	DYR	QF	HT	BAW	EO	KU	SN	GL
B	IKUC	RLY	ODN	JF	XS	VHE	AW	BG	MP	QT
C	KMOB	RUW	JHS	AQ	TI	PFN	GY	ED	VL	CX
D	BGNY	AHF	MSJ	IV	XU	PET	WO	KC	QL	DR
E	SDNT	LVU	MWH	BQ	PY	COR	GI	EF	AJ	KX
F	FMKY	ICU	SON	LW	VH	PDE	AR	TX	JQ	BG
G	XKNC	OUL	SQE	AW	VH	FDR	MB	PT	IY	JG
H	DRGN	EKV	BPA	LS	MJ	OQC	HY	TU	FI	XW
I	SWXY	CPL	DKU	IG	QM	ETJ	RB	VF	HO	NA
J	MPNR	XFW	VBO	DL	QK	TYI	US	GJ	HC	EA
K	TWBN	VOM	ADL	FY	UG	IPX	HE	SQ	JK	RC
L	JHXX	WNR	QSK	MT	GV	YBP	FD	AC	LU	EO
M	FJPX	WDV	NQA	HR	GB	LIM	UC	SO	KY	TE
N	VMAH	NCX	RFY	LG	KE	TWS	IQ	BD	JU	PO
O	QHGB	KXA	NCV	RI	OW	PYS	TF	UL	DJ	EM
P	FYPG	WOQ	TXN	UA	CE	DLR	HS	JB	KM	VI
Q	DXGA	ROF	ISL	MP	NH	UVY	JK	WT	CQ	EB
R	GYOT	FKS	DEM	JQ	PV	WHN	LX	UA	BI	RC
S	JBXA	ISH	PTM	RO	FN	YQU	EL	WC	VK	GD
T	ILSH	JEW	QRB	YK	TV	NPG	FO	MC	UD	AX
U	KIED	PRL	GHJ	WX	ON	FMT	SU	BY	AQ	VC
V	OJDE	YTB	SVU	CR	WA	XKH	PM	GQ	FI	NL
W	IODG	VKF	NTS	LR	AE	CYU	JX	MP	QH	WB
X	GUFO	WSJ	NTV	EP	BR	IAC	XL	DQ	HM	YK
Y	YMSP	XIQ	JFU	NT	AH	CDE	GR	LO	BW	VK

## NAVAIDS

Id	Name	Channel	Position	Elevation
BCE	Bryce Canyon	75	N3741.35 W11218.23	9040
BIH	Bishop	33	N3722.62 W11821.99	4114
BLD	Boulder	114	N3559.75 W11451.82	3650
BTY	Beatty	94	N3648.54 W11644.86	2925
CDC	Cedar City	120	N3747.24 W11304.90	5463
DAG	Daggett	79	N3457.75 W11634.69	1760
EED	Needles	99	N3445.96 W11428.43	650
GFS	Goffs	91	N3507.87 W11510.59	4019
GRL	Groom Lake	18	N3713.91 W11548.16	4475
HEC	Hector	74	N3447.83 W11627.78	1854
ILC	Wilson Creek	110	N3815.02 W11423.65	9318
INS	Creech AFB	87	N3635.20 W11540.12	3101
LAS	McCarran Intl	116	N3604.78 W11509.59	2142
LSV	Nellis	12	N3614.68 W11501.50	1864
MLF	Milford	58	N3821.62 W11300.79	4977
MMM	Mormon Mesa	90	N3646.16 W11416.65	2120
MVA	Mina	98	N3833.92 W11801.97	7860
OAL	Coale Dale	124	N3800.20 W11746.23	4800
PGS	Peach Springs	57	N3537.48 W11332.67	4754
TPH	Tonopah Muni	119	N3801.84 W11702.01	5330
TQQ	Silverbow	77	N3748.00 W11647.00	5500
UTI	St George	23	N3705.29 W11335.53	2871





PAR	RWY	CAT	MINIMA	ARP	ELEV	Scale 1:35'500
	21L	A B D E	2057 - 0.8 200 (200-0.8/1.6) GS 3°	36° 14.060° N 115° 01.058° W	1857 [ft] 566 [m]	0 300 600 900 1200 1500 [m]
	3R	A B D E	2057 - 0.8 200 (200-0.8/1.6) GS 3°			0 1000 2000 3000 4000 5000 [ft]
SRA	21R	A C D E	2257 - 1.2 350 (350-1.2/1.6)			
	3L	A C D E	2257 - 1.2 350 (350-1.2/1.6)			

RWY	TORA	TODA	ASDA	LDA	PSN	THR	ALS
21L	10051 [ft] 3063 [m]	11051 [ft] 3368 [m]	11051 [ft] 3368 [m]	10051 [ft] 3063 [m]	36°14.043' N	115°01.018' W	⊕
3R	10120 [ft] 3084 [m]	11120 [ft] 3398 [m]	11120 [ft] 3398 [m]	10120 [ft] 3084 [m]	36°13.029' N	115°02.038' W	

ATIS	NELLIS GROUND	NELLIS TOWER	NELLIS CONTROL	TACAN	ILS RWY 21L	NELLIS EAST	NELLIS WEST
270.100 MHz	275.800   121.800	327.000   132.55	317.525	LSV 12X	109.10 Mhz	384.400	385.000

ATIS  
270.100  
NELLIS GROUND  
275.800  
NELLIS TOWER  
327.000  
NELLIS CONTROL  
317.525  
NELLIS DEP/APP EAST  
384.400  
BLACKJACK  
377.800

CAUTION: If unable to comply  
with restrictions advise ATC  
prior to departure.



# VMC ONLY

## PILOT RESPONSIBLE FOR TERRAIN AVOIDANCE

① 4 NM from RWY 3L/R

**BEATTY**  
Chan 94 BTY

RANGE 64/65  
RANGE 63

TUCKY

R-2508

LSV R-269

**FYTTR**  
N3621.44  
W11541.47

BTY R-105

DME 15 ARC  
5000

7233  
**FLEX**  
LSV 337/5

2086 M

① 3000

**NELLIS**  
Chan 12 LSV

←R-255  
6000  
5000

4131



### DEPARTURE ROUTE DESCRIPTION

#### TAKEOFF RWY 3L/R:

- Remain below 3,000' MSL until north of Race Track and turned westbound.
- Turn left within 4NM of Nellis direct FLEX. Fly north of FLEX and turn left heading 270°.
- Intercept LSV 15 DME ARC at or below 5,000' MSL.
- ARC south, intercept LSV R-269 outbound. Maintain VFR.

#### TAKEOFF RWY 21L/21R:

- Follow Noise Abatement Procedures.
- Fly runway heading until past Golf Course, turn right heading 300°.
- Cross LSV R-255 between 5,000' and 6,000' , intercept and proceed outbound on the LSV R-269.Recommend climb to 8,500' MSL or appropriate VFR altitude for overflight of North Las Vegas Training Area. Fly routing for appr. mission/transition.

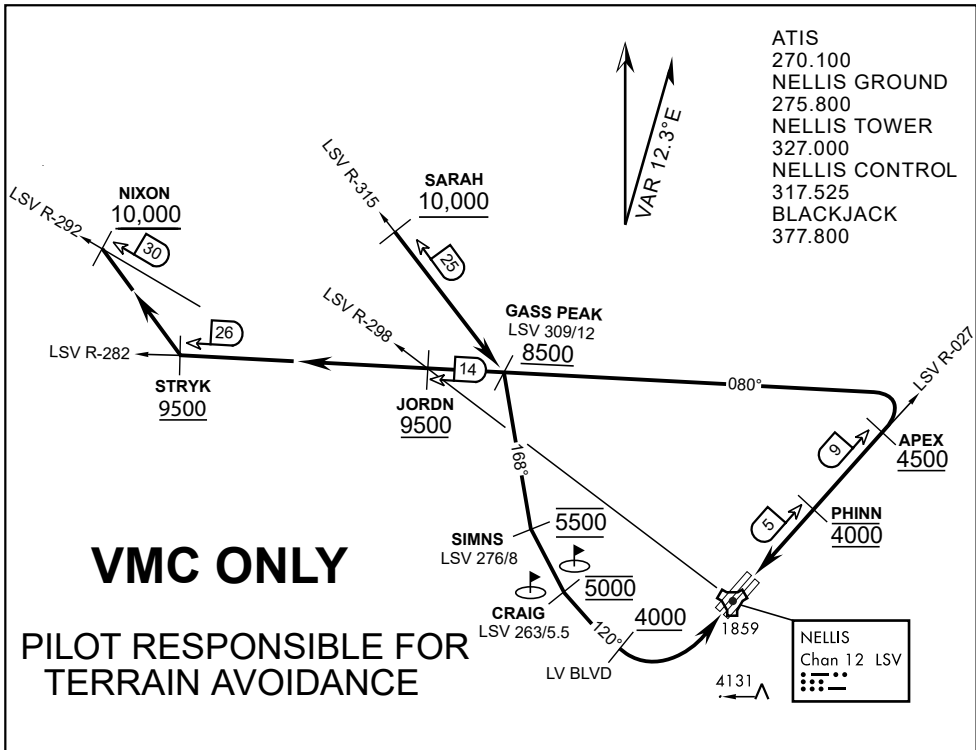
#### TRANSITIONS:

**R-4806:** Turn right at the LSV 269/20 direct to assigned ranges.

**BEATTY:** Turn right at FYTTR direct BTY via the BTY R-105

**R-2508:** Turn right at the FYTTR, intercept the BTY 105/30, direct TUCKY, then direct R-2508

## FYTTR DEPARTURE AND TRANSITIONS (FYTTR LOW)



ATIS  
 270.100  
 NELLIS GROUND  
 275.800  
 NELLIS TOWER  
 327.000  
 NELLIS CONTROL  
 317.525  
 BLACKJACK  
 377.800

**VMC ONLY**

**PILOT RESPONSIBLE FOR TERRAIN AVOIDANCE**

**APPROACH ROUTE DESCRIPTION**

**APPROACH RWY 3L/R**

Cross STRYK at or above 9,500' MSL, proceed direct GASS PEAK. Cross JORDN at or above 9,500' MSL, cross GASS PEAK at or above 8,500' MSL. Proceed direct SIMNS and cross at 5,500' MSL. Cross Las Vegas Blvd at or above 4,000' MSL then to 3,500' MSL for Initial. Remain within 4 DME if LSV on turn to final.

**VFR STRAIGHT-IN RWY 3L/R**

Depart CRAIG & descend to be at 3,000' MSL by Las Vegas Blvd. Do not descend below 3,000' MSL until within 5 DME of LSV or 4 NM of the runway on turn to final.

**APPROACH RWY 21L/R**

Cross STRYK at or above 9,500' MSL, proceed direct GASS PEAK. Cross JORDN at or above 9,500' MSL, cross GASS PEAK at or above 8,500' MSL. Cross APEX at or above 4,500' MSL then direct 5NM initial. Descend to cross PHINN at 4,000' MSL, Inside 5 NM descend to 3,500' MSL.

**VFR STRAIGHT-IN RWY 21L/R**

Cross APEX at 4,000' MSL. Descend to be at 3,000' MSL at PHINN. Descend to 3,000' MSL at LSV 027/5.

**RANGE 63B EXIT**

**SOUTH:** Via NIXON at or above 10,000' MSL, then direct STRYK.

**EAST:** Via SARAH at or above 10,000' MSL, then direct GASS PEAK.

LAS VEGAS, NEVADA

# TACAN RWY 21L

TACAN LSV Chan 12	APCH CRS 207°	Rwy Idg 10,055 TDZE 1866 Arprt Elev 1870
----------------------	------------------	--

AL-227 [USAF]

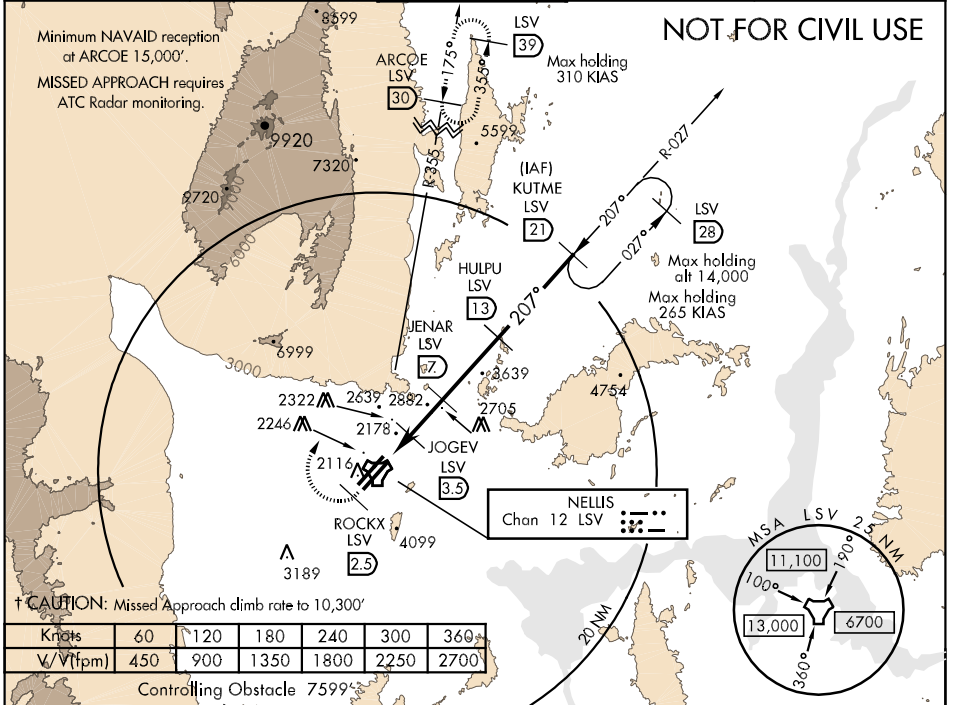
NELLIS AFB (KLSV)

▼ \* When ALS inop, increase CAT AB RVR to 50, vis to 1 mile, CAT C vis to 1¼ miles, CAT D vis to 2 miles, CAT E vis to 2½ miles.  
\*\* Circling not authorized E of Rwy 3R-21L.



† MISSED APPROACH: Climb to 15,000, heading 209° to 2.5 DME (ROCKX), then climbing right turn heading 020° to join LSV TACAN R-355 to ARCOE and hold, continue climb in hold to 15,000.

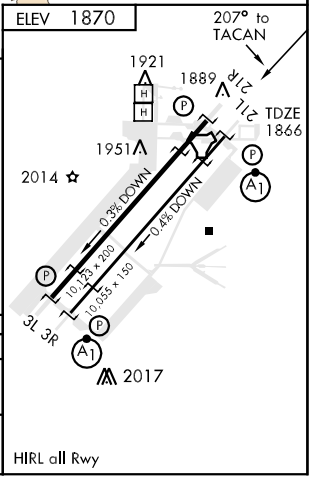
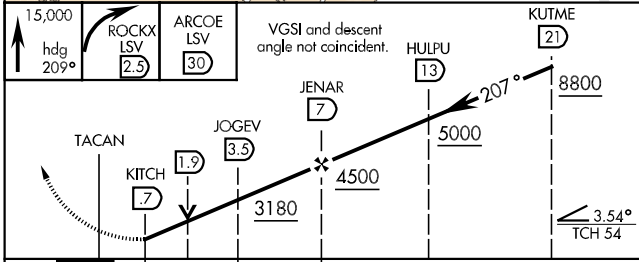
ATIS 270.1	NELLIS APP CON 124.95 273.55	NELLIS TOWER 132.55 327.0	GND CON 121.8 275.8	CINC DEL 120.9 289.4
---------------	---------------------------------	------------------------------	------------------------	-------------------------



† CAUTION: Missed Approach climb rate to 10,300'

Knots	60	120	180	240	300	360
V/V(ftm)	450	900	1350	1800	2250	2700

EMERG SAFE ALT 100 NM 14,000



CATEGORY	A	B	C	D	E
S-21L *	2480/24 614 (700-½)		2480/60 614 (700-1¼)	2480-1½ 614 (700-1½)	2480-1¾ 614 (700-1¾)
CIRCLING **	2480-1 610 (700-1)	2680-1¼ 810 (900-1¼)	2680-2¼ 810 (900-2¼)	2680-2½ 810 (900-2½)	2940-3 1070(1100-3)

LAS VEGAS, NEVADA  
Amdt 3 10266

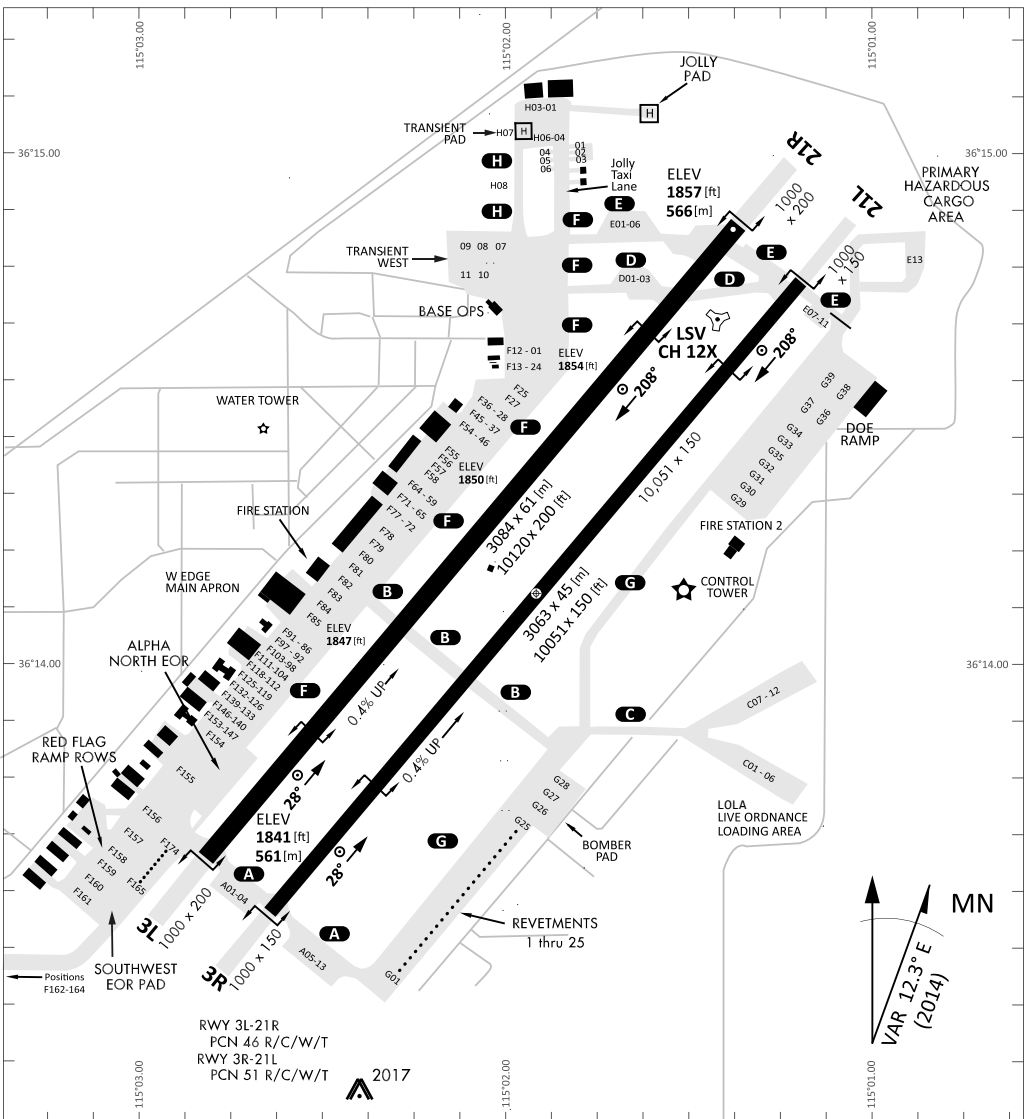
36°14'N-115°02'W

NELLIS AFB (KLSV)

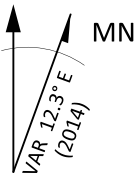
# TACAN RWY 21L

SW-4, 23 SEP 2010 to 21 OCT 2010

SW-4, 23 SEP 2010 to 21 OCT 2010



RWY 3L-21R  
 PCN 46 R/C/W/T  
 RWY 3R-21L  
 PCN 51 R/C/W/T



PAR	RWY	CAT	MINIMA	ARP	ELEV	Scale 1:35'500	
	21L	A B D E	2057 - 0.8 200 (200-0.8/1.6) GS 3°	36° 14.060° N 115° 01.058° W	1857 [ft] 566 [m]	0	300 600 900 1200 1500 [m]
	3R	A B D E	2057 - 0.8 200 (200-0.8/1.6) GS 3°			0	1000 2000 3000 4000 5000 [ft]
	21R	A C D E	2257 - 1.2 350 (350-1.2/1.6)				
	3L	A C D E	2257 - 1.2 350 (350-1.2/1.6)				

RWY	TORA	TODA	ASDA	LDA	PSN	THR	ALS
21L	10051 [ft] 3063 [m]	11051 [ft] 3368 [m]	11051 [ft] 3368 [m]	10051 [ft] 3063 [m]	36°14.043' N	115°01.018' W	⊕
3R	10120 [ft] 3084 [m]	11120 [ft] 3398 [m]	11120 [ft] 3398 [m]	10120 [ft] 3084 [m]	36°13.029' N	115°02.038' W	

ATIS	NELLIS GROUND	NELLIS TOWER	NELLIS CONTROL	TACAN	ILS RWY 21L	NELLIS EAST	NELLIS WEST
270.100 MHz	275.800   121.800	327.000   132.55	317.525	LSV 12X	109.10 Mhz	384.400	385.000