

MISSION DATA CARD

| | | | | | | | | |
|-------------|---------------|----------|--------|----------|------|-------------|------|-------|
| OPORD | | Callsign | | Mission | | Date/Time | | |
| 3421/2024 | | T-Rex 1 | | Training | | 212000NOV24 | | |
| Task | Bomb Training | | | | | Freq | | |
| AO | R64 | | | | | 132.15 | | |
| Departure | | | | Recovery | | | | |
| FYTTR THREE | | | | STRYK | | | | |
| # | Callsign | | Pilot | | IFF | TCN | LSR | NET |
| -1 | T-Rex 1-1 | | addiks | | 1511 | 1Y | 1651 | 25/01 |
| -2 | T-Rex 1-2 | | Lenzi | | 1512 | 64Y | 1652 | 25/02 |

LOADOUT

| | | | | | | | |
|-----|---------------|--|--|--|------|---------|--|
| A/A | A9M | | | | GUN | 100% CM | |
| A/G | 7M282L, 6xM82 | | | | CHF | 120 | |
| POD | A184L, TGP | | | | FLR | 360 | |
| TKS | | | | | FUEL | 80% | |

TOLD

| | | | | | |
|------|---------|--------|-------|-------|------|
| | Takeoff | Target | Joker | Bingo | Land |
| FUEL | 8869 | | | | |

AIRBASES

| | | | | | | | | |
|-----|------------|-----|--------|-------|-------|-----|------|-------|
| | Name | TCN | ATIS | GND | TWR | RWY | Elev | ILS |
| Dep | Nellis AFB | 12X | 270.1 | 275.8 | 327.0 | 21L | 1850 | 109.1 |
| Arr | Nellis AFB | 12X | 270.1 | 275.8 | 327.0 | 21L | 1850 | 109.1 |
| Div | Creech AFB | 87X | 290.45 | 275.8 | 360.6 | | | |

FLIGHTPLAN

| # | Name | Navaid/Coords/DME | ALT | TOT |
|----|-----------|--------------------------------------|-------|-----|
| 1 | Nellis | N36 14.680 W115 01.500 | | |
| 2 | FLEX | LSV 337/5 (N36 18.620 W115 02.360) | 3000 | |
| 3 | FYTTR | LSV 269/33 (N36 21.440 W115 41.470) | 12000 | |
| 4 | Range 64A | N36 55.505 W115 38.050 | 12000 | |
| 5 | STRYK | LSV 282/26 (N36 25.620 W115 30.700) | 9500 | |
| 6 | GASS PEAK | LSV 309/12 (N36 24.140 W115 10.660) | 8500 | |
| 7 | SIMNS | LSV 276/8 (N36 17.340 W115 10.750) | 5500 | |
| 8 | CRAIG | LSV 263/5.5 (N36 15.250 W115 08.270) | 5000 | |
| 9 | APEX | LSV 027/09 (N36 21.580 W114 54.340) | 4500 | |
| 10 | Nellis | N36 14.680 W115 01.500 | | |

COMMS

| Radio | Usage |
|-------|------------------------------|
| 1 | 132.15 |
| 2 | 11 - 3 - 4 - 16 - 11 - 4 - 3 |
| 3 | 32.00 |

OTHER FLIGHTS

| Callsign | Mission | Airframe | Freq | TCN | Grpld | Laser |
|-------------|----------|-----------|-------|-------------------|-------|-------|
| Edelweiss 1 | Training | 4x AH-64D | 133.5 | 1/64 | | 171X |
| | AO | SE Nellis | Task | masking movements | | |
| Raptor 1 | Training | 4x F-16C | 134.0 | 1/64 | | 162X |
| | AO | BVR Y | Task | BVR | | |

RADIO CHANNELS

| # | Freq | Name |
|----|---------|--------------------------------|
| 1 | | Flight/Squadron specific |
| 2 | 289.4 | Nellis Clearance Delivery |
| 3 | 275.8 | Nellis Ground |
| 4 | 327.0 | Nellis Tower |
| 5 | 385.4 | Nellis Approach/Departure West |
| 6 | 273.55 | Nellis Approach/Departure East |
| 7 | 317.525 | Nellis Control -- Sally |
| 8 | 254.4 | Nellis Control-- Lee |
| 9 | 305.6 | SOF Bullseye |
| 10 | 343.725 | EMERGENCY SINGLE FRQ |
| 11 | 270.1 | Nellis ATIS |
| 12 | 360.625 | Creech AFB Tower |
| 13 | 250.1 | HAVE QUICK 13 |
| 14 | 251.1 | HAVE QUICK 14 |
| 15 | 252.1 | HAVE QUICK 15 |
| 16 | 377.8 | Blackjack |
| 17 | 265.0 | KC-135 AR-641A |
| 18 | 360.8 | KC-135MPRS AR-635 |
| 19 | 319.8 | KC-135MPRS AR-625 |
| 20 | 300.05 | KC-135 AR-231V |

| RAMROD | | | | | | | | | | |
|------------|------|-----|-----|----|----|-----|----|----|----|----|
| 0 | 1 | 2 | 3 | 4 | 5 | 6 | 7 | 8 | 9 | |
| F | U | M | I | G | A | T | O | R | S | |
| KTC 1400 C | | | | | | | | | | |
| | 0 | 1 | 2 | 3 | 4 | 5 | 6 | 7 | 8 | 9 |
| A | EKBH | OUS | PIA | XL | TF | QVR | YC | JD | MG | WN |
| B | KRCA | FSG | VHB | XE | YN | MJD | TQ | PO | IL | UW |
| C | FXPQ | BKJ | DOH | AT | LR | MWY | IG | US | VN | CE |
| D | FIDU | PLN | JYS | XC | VB | EHO | RT | MW | AG | KQ |
| E | DNFX | UHY | EJB | OR | GS | QMT | PC | IA | VW | LK |
| F | KEXV | NTS | AFP | IQ | JO | UDH | LW | RM | GB | CY |
| G | IKHP | LYT | CAJ | ES | WQ | FUX | OV | BN | RD | MG |
| H | VNMU | SEF | YPH | OA | TD | QXI | BG | LK | CR | WJ |
| I | HYCV | NWU | LJI | BX | RM | GQE | TO | FA | KP | DS |
| J | SHGV | WKI | QFA | YP | EL | RTX | BU | DJ | OM | NC |
| K | XTBQ | GPJ | FHD | NS | VE | RLU | WM | YO | IC | KA |
| L | BYFQ | KCS | HOU | MT | XJ | GWE | DA | NL | PI | RV |
| M | LFSW | RUT | XGK | OY | CV | EDJ | PA | HM | NI | QB |
| N | GUCM | OSP | YHI | AQ | TX | DWR | BN | LV | JF | KE |
| O | BCOW | PHV | IAL | TN | MF | DGU | JS | ER | QX | KY |
| P | IEXQ | JSH | OAP | LV | BY | RKG | WU | MN | FC | DT |
| Q | TXRP | UYF | JEB | MH | LV | GCN | QS | DA | KO | IW |
| R | MVDJ | QUS | GET | HI | KW | OCF | LX | YB | AR | NP |
| S | YLHP | QKJ | SDA | NX | GO | WFU | CR | EB | MI | TV |
| T | IMBN | UGY | WCJ | FS | AV | QOE | KD | RH | XP | TL |
| U | JBGF | CUR | OPA | HN | YS | KTE | WM | LD | VI | QX |
| V | LXVM | BDU | QKI | EN | AY | GTW | SR | FP | JH | OC |
| W | HANJ | GXS | OEC | LP | DK | WBV | IT | MQ | FR | YU |
| X | JRFL | HEA | GWT | QN | BU | KDX | OS | IC | YV | PM |
| Y | NASB | CJV | LEG | WD | QH | TFM | UR | IY | OK | XP |

NAVAIDS

| Id | Name | Channel | Position | Elevation |
|-----------|---------------|----------------|--------------------|------------------|
| BCE | Bryce Canyon | 75 | N3741.35 W11218.23 | 9040 |
| BIH | Bishop | 33 | N3722.62 W11821.99 | 4114 |
| BLD | Boulder | 114 | N3559.75 W11451.82 | 3650 |
| BTY | Beatty | 94 | N3648.54 W11644.86 | 2925 |
| CDC | Cedar City | 120 | N3747.24 W11304.90 | 5463 |
| DAG | Daggett | 79 | N3457.75 W11634.69 | 1760 |
| EED | Needles | 99 | N3445.96 W11428.43 | 650 |
| GFS | Goffs | 91 | N3507.87 W11510.59 | 4019 |
| GRL | Groom Lake | 18 | N3713.91 W11548.16 | 4475 |
| HEC | Hector | 74 | N3447.83 W11627.78 | 1854 |
| ILC | Wilson Creek | 110 | N3815.02 W11423.65 | 9318 |
| INS | Creech AFB | 87 | N3635.20 W11540.12 | 3101 |
| LAS | McCarran Intl | 116 | N3604.78 W11509.59 | 2142 |
| LSV | Nellis | 12 | N3614.68 W11501.50 | 1864 |
| MLF | Milford | 58 | N3821.62 W11300.79 | 4977 |
| MMM | Mormon Mesa | 90 | N3646.16 W11416.65 | 2120 |
| MVA | Mina | 98 | N3833.92 W11801.97 | 7860 |
| OAL | Coale Dale | 124 | N3800.20 W11746.23 | 4800 |
| PGS | Peach Springs | 57 | N3537.48 W11332.67 | 4754 |
| TPH | Tonopah Muni | 119 | N3801.84 W11702.01 | 5330 |
| TQQ | Silverbow | 77 | N3748.00 W11647.00 | 5500 |
| UTI | St George | 23 | N3705.29 W11335.53 | 2871 |



RWY 3L-21R
 PCN 46 R/C/W/T
 RWY 3R-21L
 PCN 51 R/C/W/T
 2017

| PAR | RWY | CAT | MINIMA | | ARP | ELEV | Scale 1:35'500 | |
|-----|-----|---------|----------------|---------------------|---------------------------------|----------------------|----------------|------|
| | 21L | A B D E | 2057 - 0.8 200 | (200-0.8/1.6) GS 3° | 36° 14.060° N 115° 01.058° W | 1857 [ft] 566 [m] | 0 | 300 |
| | 3R | A B D E | 2057 - 0.8 200 | (200-0.8/1.6) GS 3° | | | 0 | 1000 |
| | 21R | A C D E | 2257 - 1.2 350 | (350-1.2/1.6) | | | 0 | 1000 |
| | 3L | A C D E | 2257 - 1.2 350 | (350-1.2/1.6) | | | 0 | 1000 |

| RWY | TORA | TODA | ASDA | LDA | PSN | THR | ALS |
|-----|---------------------|---------------------|---------------------|---------------------|--------------|---------------|-----|
| 21L | 10051 [ft] 3063 [m] | 11051 [ft] 3368 [m] | 11051 [ft] 3368 [m] | 10051 [ft] 3063 [m] | 36°14.043' N | 115°01.018' W | ⊕ |
| 3R | 10120 [ft] 3084 [m] | 11120 [ft] 3398 [m] | 11120 [ft] 3398 [m] | 10120 [ft] 3084 [m] | 36°13.029' N | 115°02.038' W | |

| ATIS | NELLIS GROUND | NELLIS TOWER | NELLIS CONTROL | TACAN | ILS RWY 21L | NELLIS EAST | NELLIS WEST |
|-------------|-------------------|------------------|----------------|---------|-------------|-------------|-------------|
| 270.100 MHz | 275.800 121.800 | 327.000 132.55 | 317.525 | LSV 12X | 109.10 Mhz | 384.400 | 385.000 |

FYTTR THREE DEPARTURE IFR CHART | VALID 2014 LAS VEGAS, NEVADA

ATIS
270.100
NELLIS GROUND
275.800
NELLIS TOWER
327.000
NELLIS CONTROL
317.525
NELLIS DEP/APP EAST
384.400
BLACKJACK
377.800



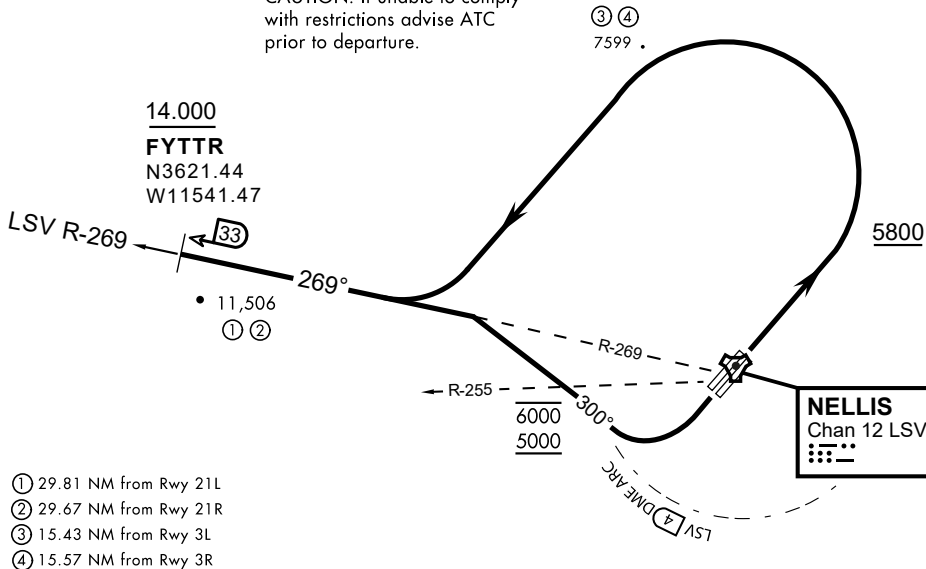
| Rwy | Knots | 60 | 120 | 180 | 240 | 300 | 360 |
|---------|----------|-----|-----|------|------|------|------|
| 3L (a) | V/V(fpm) | 394 | 788 | 1182 | 1576 | 1970 | 2364 |
| 3R (a) | V/V(fpm) | 392 | 784 | 1176 | 1568 | 1960 | 2352 |
| 21L (b) | V/V(fpm) | 388 | 776 | 1164 | 1552 | 1940 | 2328 |
| 21R (b) | V/V(fpm) | 390 | 780 | 1170 | 1560 | 1950 | 2340 |

Minimum Climb Rate

(a) to 9300

(b) to 13 500

CAUTION: If unable to comply with restrictions advise ATC prior to departure.



- (1) 29.81 NM from Rwy 21L
- (2) 29.67 NM from Rwy 21R
- (3) 15.43 NM from Rwy 3L
- (4) 15.57 NM from Rwy 3R

DEPARTURE ROUTE DESCRIPTION

TAKEOFF RWY 3L/R

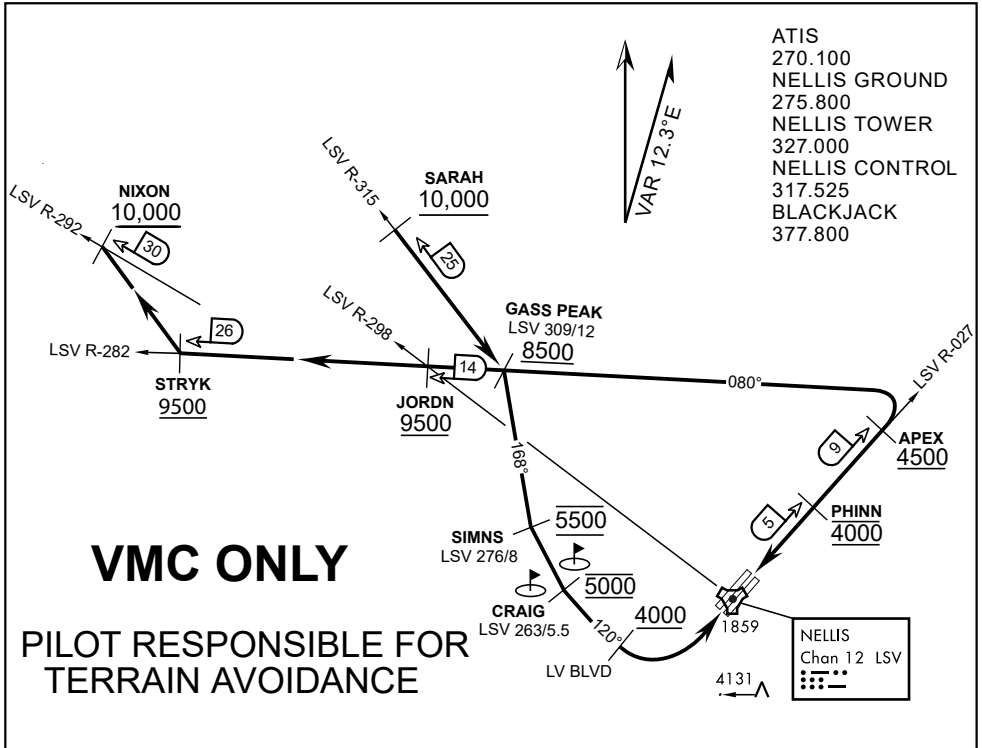
- Fly runway heading until reaching 5,800'.
- Then climbing left turn to intercept LSV TACAN R-269 outbound.
- Cross FYTTR at or above 14,000' or as assigned, then via assigned route.

TAKEOFF RWY 21L/21R

- Turn right to intercept LSV TACAN R-269 outbound.
- Remain within LSV 4 DME until joining LSV R-269
- Cross R-255 between 5,000' and 6,000'.
- Cross FYTTR at or above 14,000' or as assigned, then via assigned route.

NOISE ABATEMENT PROCEDURES:

Fly according Nellis Noise Abatement instructions as published



ATIS
270.100
NELLIS GROUND
275.800
NELLIS TOWER
327.000
NELLIS CONTROL
317.525
BLACKJACK
377.800

VMC ONLY

**PILOT RESPONSIBLE FOR
TERRAIN AVOIDANCE**

APPROACH ROUTE DESCRIPTION

APPROACH RWY 3L/R

Cross STRYK at or above 9,500' MSL, proceed direct GASS PEAK. Cross JORDN at or above 9,500' MSL, cross GASS PEAK at or above 8,500' MSL. Proceed direct SIMNS and cross at 5,500' MSL. Cross Las Vegas Blvd at or above 4,000' MSL then to 3,500' MSL for Initial. Remain within 4 DME if LSV on turn to final.

VFR STRAIGHT-IN RWY 3L/R

Depart CRAIG & descend to be at 3,000' MSL by Las Vegas Blvd. Do not descend below 3,000' MSL until within 5 DME of LSV or 4 NM of the runway on turn to final.

APPROACH RWY 21L/R

Cross STRYK at or above 9,500' MSL, proceed direct GASS PEAK. Cross JORDN at or above 9,500' MSL, cross GASS PEAK at or above 8,500' MSL. Cross APEX at or above 4,500' MSL then direct 5NM initial. Descend to cross PHINN at 4,000' MSL, Inside 5 NM descend to 3,500' MSL.

VFR STRAIGHT-IN RWY 21L/R

Cross APEX at 4,000' MSL. Descend to be at 3,000' MSL at PHINN. Descend to 3,000' MSL at LSV 027/5.

RANGE 63B EXIT

SOUTH: Via NIXON at or above 10,000' MSL, then direct STRYK.
EAST: Via SARAH at or above 10,000' MSL, then direct GASS PEAK.



INDIAN SPRINGS, NEVADA

| | | | |
|----------------------|------------------|-------------------------|--------------|
| TACAN INS Chan 87 | APCH CRS 065° | Rwy ldg TDZE 3133 | 9002 3113 |
| | | Arpt Elev 3113 | |

INDIAN SPRINGS AF AUX (KINS)

▼ * MISSED APPROACH: Straight ahead to INS TACAN, intercept INS R-outbound, cross 17 DME at or above 9500, then direkt KSV TACAN 114

NELLIS CON

CREECH AFB TOWER
118.30 60.60

GND CON

NOT FOR CIVIL USE

FOR USE UNDER BASIC VFR
WEATHER MINIMUMS ONLY

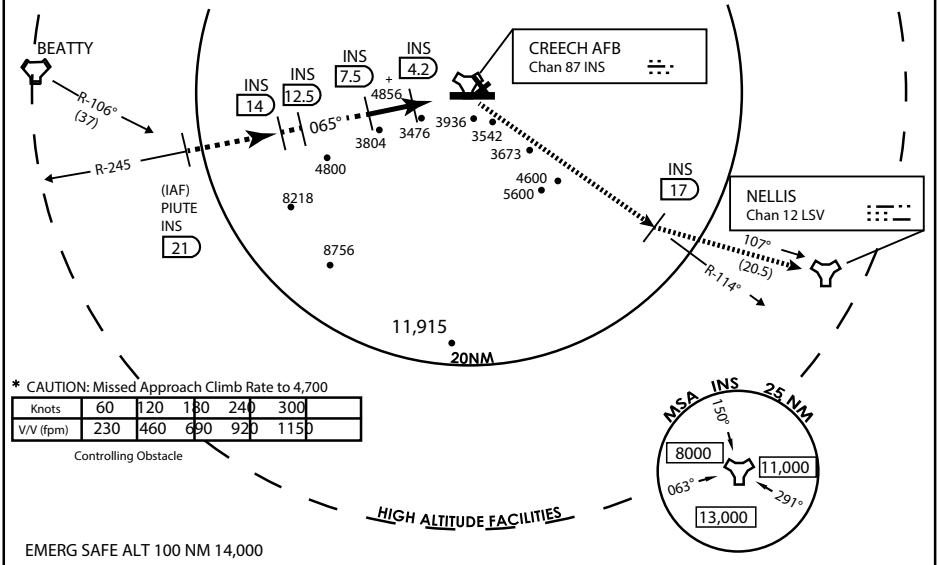
PILOT IS RESPONSIBLE FOR TERRAIN/OBSTACLE AVOIDANCE AND APPROPRIATE VFR CLOUD CLEARANCE FOR ALL

CAUTION: Descent gradients are greater than allowed under standard TERPS criteria and inbound course does not meet straight-in criteria

CAUTION: Final approach course crosses Runway centerline at MIDFIELD. Maneuvering left of course required prior to landing. Do not Maneuver farther north than the INS R- 258

Modified by viaBog 66 for use with DCS
NOT FOR REAL LIFE NAVIGATION

Modified by viaBog 66 for use with DCS
NOT FOR REAL LIFE NAVIGATION



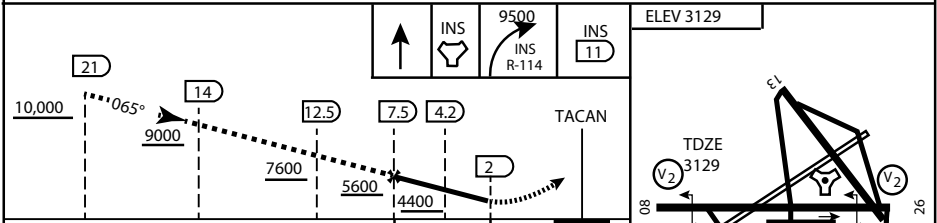
* CAUTION: Missed Approach Climb Rate to 4,700

| | | | | | |
|-----------|-----|-----|-----|-----|------|
| Knots | 60 | 120 | 180 | 240 | 300 |
| V/V (fpm) | 230 | 460 | 690 | 920 | 1150 |

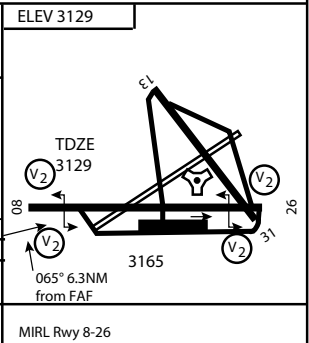
Controlling Obstacle

HIGH ALTITUDE FACILITIES

EMERG SAFE ALT 100 NM 14,000



| | | | | | |
|----------|----------------|-----------------|-------------------------------|-----------------------|-------------------------------|
| CATEGORY | A | B | C | D | E |
| S-8 | 3760-1 1/2 | 627 (700-1 1/2) | 3760-1 3/4 627 (700-1 3/4) | 3760-2 627 (700-2) | 3760-2 1/4 627 (700-2 1/4) |
| CIRCLING | NOT AUTHORIZED | | | | |



CITY OF INDIAN, NEVADA

INDIAN SPRINGS AF AUX (KINS)

(FOR DAY VFR USE ONLY)



AIRPORT DIAGRAM

ATIS
 122.5
 CREECH TOWER
 118.4 360.7 38.65
 GND CON
 118.3 275.8
 CLNC DEL

115°42'W

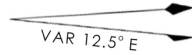
FIELD
 ELEV
 3127

80

972 X 150

HOT CARGO PAD

BAK-12


 VAR 12.5° E

WEST EOR

115°41'W

476 vFG JAN 2019

CONTROL TOWER
 BASE OPS

RPA LOLA WEST

RPA LOLA EAST

LOLA / HUNG ORDNANCE

RUNWAY
 31/13
 MQ/RQ-1
 ONLY

476 vFG JAN 2019

9002 X 150

258.5°

860 X 100

313.8°

4064 X 100

199 X 100

13

ELEV 3127

BAK-12

ELEV 3127

115°40'W

EAST EOR

1030 X 150

26

AIRPORT DIAGRAM