

MISSION DATA CARD

OPORD		Callsign		Mission		Date/Time		
3420/2024		Monster 4		Training		210000NOV24		
Task	Bomb Training					Freq		
AO	Range 63					132.25		
Departure				Recovery				
FYTTR LOW				STRYK				
#	Callsign		Pilot		IFF	TCN	LSR	NET
-1	Monster 4-1		Stoner		1651	1Y	1621	24/01
-2	Monster 4-2		Toolface		1652	64Y	1622	24/02

LOADOUT

A/A	A9M				GUN	100% CM	
A/G	7M282L, 6xM82				CHF	120	
POD	A184L, TGP				FLR	360	
TKS					FUEL	80%	

TOLD

	Takeoff	Target	Joker	Bingo	Land
FUEL	8869				

AIRBASES

	Name	TCN	ATIS	GND	TWR	RWY	Elev	ILS
Dep	Nellis AFB	12X	270.1	275.8	327.0	21L	1850	109.1
Arr	Nellis AFB	12X	270.1	275.8	327.0	21L	1850	109.1
Div	Creech AFB	87X	290.45	275.8	360.6			

FLIGHTPLAN

#	Name	Navaid/Coords/DME	ALT	TOT
1	Nellis	N36 14.680 W115 01.500		
2	FLEX	LSV 337/5 (N36 18.620 W115 02.360)	3000	
3	FYTTR	LSV 269/33 (N36 21.440 W115 41.470)	12000	
4	Range 63B	N36 34.499 W115 26.329	12000	
5	STRYK	LSV 282/26 (N36 25.620 W115 30.700)	9500	
6	GASS PEAK	LSV 309/12 (N36 24.140 W115 10.660)	8500	
7	SIMNS	LSV 276/8 (N36 17.340 W115 10.750)	5500	
8	CRAIG	LSV 263/5.5 (N36 15.250 W115 08.270)	5000	
9	APEX	LSV 027/09 (N36 21.580 W114 54.340)	4500	
10	Nellis	N36 14.680 W115 01.500		

COMMS

Radio	Usage
1	132.25
2	11-3-4-16-11-4-3
3	32.00

RADIO CHANNELS

#	Freq	Name
1		Flight/Squadron specific
2	289.4	Nellis Clearance Delivery
3	275.8	Nellis Ground
4	327.0	Nellis Tower
5	385.4	Nellis Approach/Departure West
6	273.55	Nellis Approach/Departure East
7	317.525	Nellis Control -- Sally
8	254.4	Nellis Control-- Lee
9	305.6	SOF Bullseye
10	343.725	EMERGENCY SINGLE FRQ
11	270.1	Nellis ATIS
12	360.625	Creech AFB Tower
13	250.1	HAVE QUICK 13
14	251.1	HAVE QUICK 14
15	252.1	HAVE QUICK 15
16	377.8	Blackjack
17	265.0	KC-135 AR-641A
18	360.8	KC-135MPRS AR-635
19	319.8	KC-135MPRS AR-625
20	300.05	KC-135 AR-231V

RAMROD

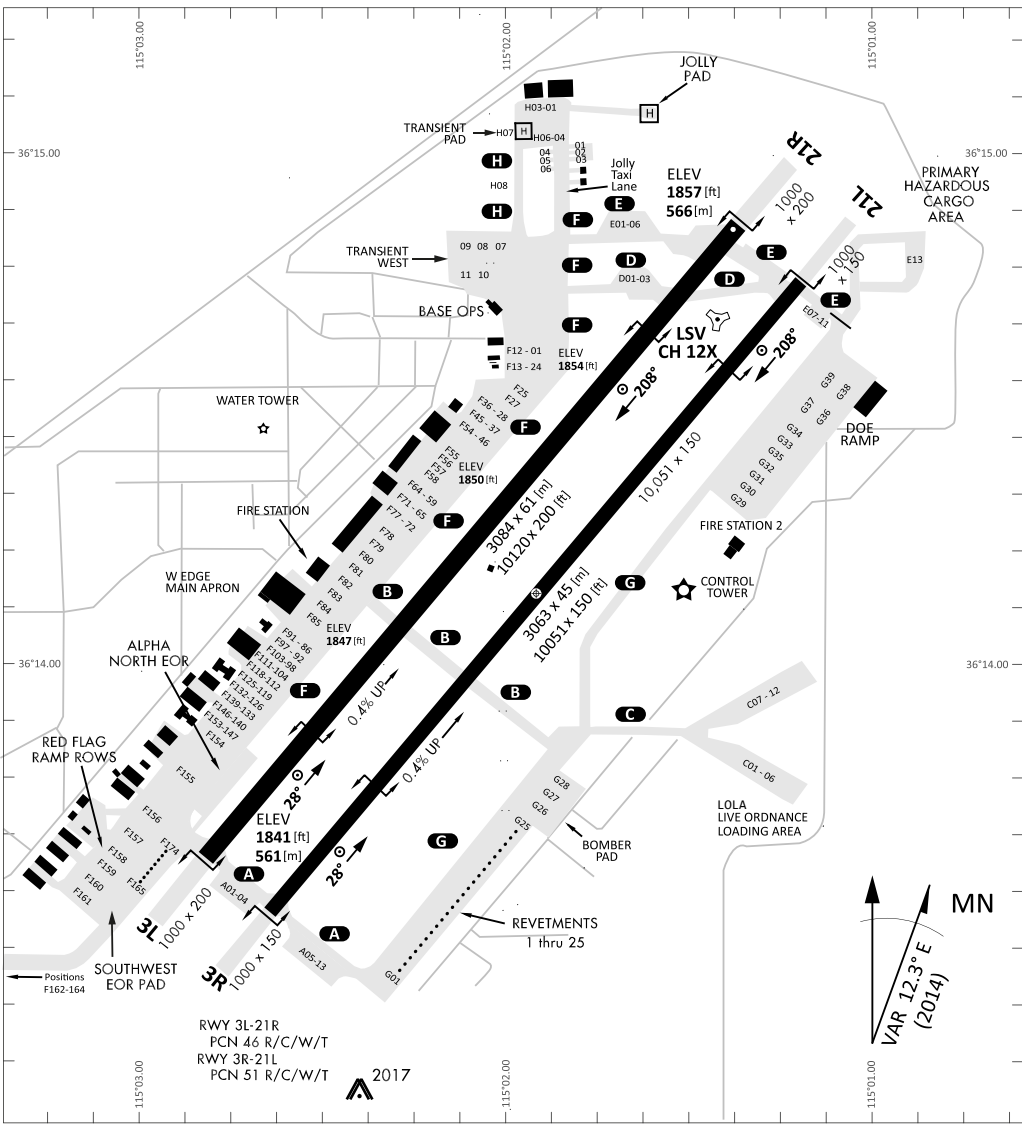
0	1	2	3	4	5	6	7	8	9
F	U	M	I	G	A	T	O	R	S

KTC 1400 C

	0	1	2	3	4	5	6	7	8	9
A	EKBH	OUS	PIA	XL	TF	QVR	YC	JD	MG	WN
B	KRCA	FSG	VHB	XE	YN	MJD	TQ	PO	IL	UW
C	FXPQ	BKJ	DOH	AT	LR	MWY	IG	US	VN	CE
D	FIDU	PLN	JYS	XC	VB	EHO	RT	MW	AG	KQ
E	DNFX	UHY	EJB	OR	GS	QMT	PC	IA	VW	LK
F	KEXV	NTS	AFP	IQ	JO	UDH	LW	RM	GB	CY
G	IKHP	LYT	CAJ	ES	WQ	FUX	OV	BN	RD	MG
H	VNMU	SEF	YPH	OA	TD	QXI	BG	LK	CR	WJ
I	HYCV	NWU	LJI	BX	RM	GQE	TO	FA	KP	DS
J	SHGV	WKI	QFA	YP	EL	RTX	BU	DJ	OM	NC
K	XTBQ	GPJ	FHD	NS	VE	RLU	WM	YO	IC	KA
L	BYFQ	KCS	HOU	MT	XJ	GWE	DA	NL	PI	RV
M	LFSW	RUT	XGK	OY	CV	EDJ	PA	HM	NI	QB
N	GUCM	OSP	YHI	AQ	TX	DWR	BN	LV	JF	KE
O	BCOW	PHV	IAL	TN	MF	DGU	JS	ER	QX	KY
P	IEXQ	JSH	OAP	LV	BY	RKG	WU	MN	FC	DT
Q	TXRP	UYF	JEB	MH	LV	GCN	QS	DA	KO	IW
R	MVDJ	QUS	GET	HI	KW	OCF	LX	YB	AR	NP
S	YLHP	QKJ	SDA	NX	GO	WFU	CR	EB	MI	TV
T	IMBN	UGY	WCJ	FS	AV	QOE	KD	RH	XP	TL
U	JBGF	CUR	OPA	HN	YS	KTE	WM	LD	VI	QX
V	LXVM	BDU	QKI	EN	AY	GTW	SR	FP	JH	OC
W	HANJ	GXS	OEC	LP	DK	WBV	IT	MQ	FR	YU
X	JRFL	HEA	GWT	QN	BU	KDX	OS	IC	YV	PM
Y	NASB	CJV	LEG	WD	QH	TFM	UR	IY	OK	XP

NAVAIDS

Id	Name	Channel	Position	Elevation
BCE	Bryce Canyon	75	N3741.35 W11218.23	9040
BIH	Bishop	33	N3722.62 W11821.99	4114
BLD	Boulder	114	N3559.75 W11451.82	3650
BTY	Beatty	94	N3648.54 W11644.86	2925
CDC	Cedar City	120	N3747.24 W11304.90	5463
DAG	Daggett	79	N3457.75 W11634.69	1760
EED	Needles	99	N3445.96 W11428.43	650
GFS	Goffs	91	N3507.87 W11510.59	4019
GRL	Groom Lake	18	N3713.91 W11548.16	4475
HEC	Hector	74	N3447.83 W11627.78	1854
ILC	Wilson Creek	110	N3815.02 W11423.65	9318
INS	Creech AFB	87	N3635.20 W11540.12	3101
LAS	McCarran Intl	116	N3604.78 W11509.59	2142
LSV	Nellis	12	N3614.68 W11501.50	1864
MLF	Milford	58	N3821.62 W11300.79	4977
MMM	Mormon Mesa	90	N3646.16 W11416.65	2120
MVA	Mina	98	N3833.92 W11801.97	7860
OAL	Coale Dale	124	N3800.20 W11746.23	4800
PGS	Peach Springs	57	N3537.48 W11332.67	4754
TPH	Tonopah Muni	119	N3801.84 W11702.01	5330
TQQ	Silverbow	77	N3748.00 W11647.00	5500
UTI	St George	23	N3705.29 W11335.53	2871



RWY 3L-21R
 PCN 46 R/C/W/T
 RWY 3R-21L
 PCN 51 R/C/W/T
 2017

PAR	RWY	CAT	MINIMA		ARP	ELEV	Scale 1:35'500	
	21L	A B D E	2057 - 0.8 200	(200-0.8/1.6) GS 3°	36° 14.060° N 115° 01.058° W	1857 [ft] 566 [m]	0 300 600 900 1200 1500 [m]	
	3R	A B D E	2057 - 0.8 200	(200-0.8/1.6) GS 3°			0 1000 2000 3000 4000 5000 [ft]	
SRA	21R	A C D E	2257 - 1.2 350	(350-1.2/1.6)				
	3L	A C D E	2257 - 1.2 350	(350-1.2/1.6)				

RWY	TORA	TODA	ASDA	LDA	PSN	THR	ALS
21L	10051 [ft] 3063 [m]	11051 [ft] 3368 [m]	11051 [ft] 3368 [m]	10051 [ft] 3063 [m]	36°14.043' N	115°01.018' W	⊕
3R	10120 [ft] 3084 [m]	11120 [ft] 3398 [m]	11120 [ft] 3398 [m]	10120 [ft] 3084 [m]	36°13.029' N	115°02.038' W	

ATIS	NELLIS GROUND	NELLIS TOWER	NELLIS CONTROL	TACAN	ILS RWY 21L	NELLIS EAST	NELLIS WEST
270.100 MHz	275.800 121.800	327.000 132.55	317.525	LSV 12X	109.10 Mhz	384.400	385.000

FYTTR LOW VISUAL OPERATION CHART | VALID 2014

ATIS
270.100
NELLIS GROUND
275.800
NELLIS TOWER
327.000
NELLIS CONTROL
317.525
NELLIS DEP/APP EAST
384.400
BLACKJACK
377.800

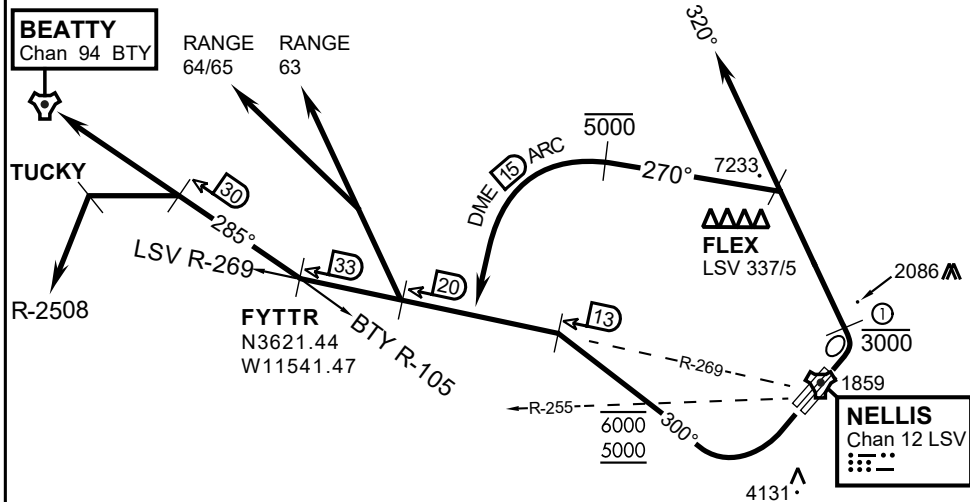
CAUTION: If unable to comply with restrictions advise ATC prior to departure.



VMC ONLY

PILOT RESPONSIBLE FOR TERRAIN AVOIDANCE

① 4 NM from RWY 3L/R



DEPARTURE ROUTE DESCRIPTION

TAKEOFF RWY 3L/R:

- Remain below 3,000' MSL until north of Race Track and turned westbound.
- Turn left within 4NM of Nellis direct FLEX. Fly north of FLEX and turn left heading 270°.
- Intercept LSV 15 DME ARC at or below 5,000' MSL.
- ARC south, intercept LSV R-269 outbound. Maintain VFR.

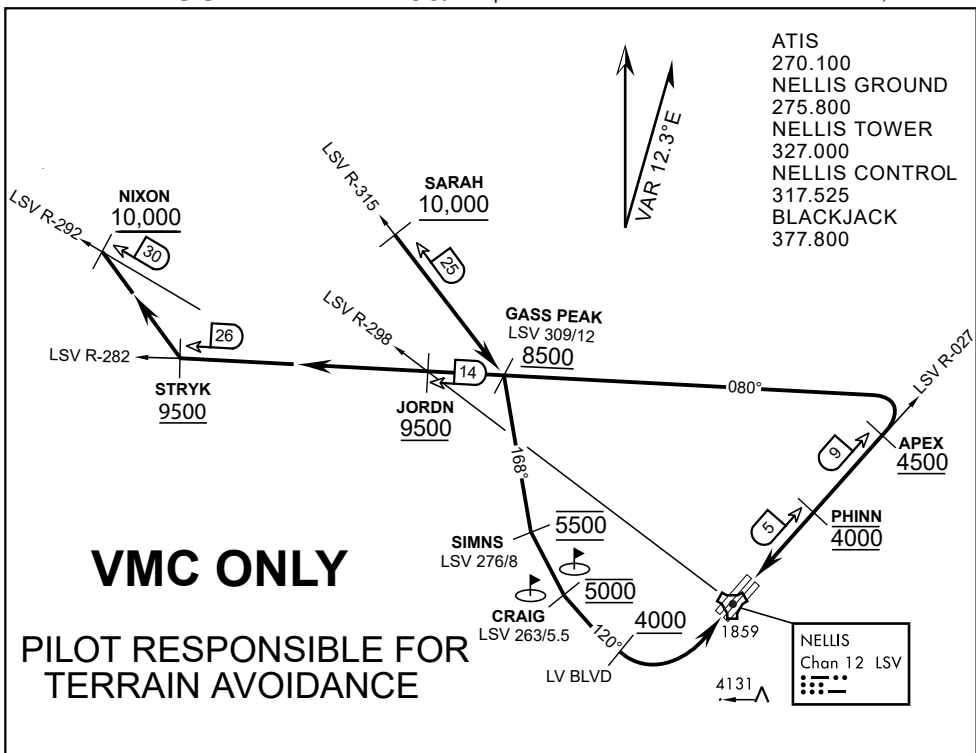
TAKEOFF RWY 21L/21R:

- Follow Noise Abatement Procedures.
- Fly runway heading until past Golf Course, turn right heading 300°.
- Cross LSV R-255 between 5,000' and 6,000' , intercept and proceed outbound on the LSV R-269.Recommend climb to 8,500' MSL or appropriate VFR altitude for overflight of North Las Vegas Training Area. Fly routing for appr. mission/transition.

TRANSITIONS:

- R-4806:** Turn right at the LSV 269/20 direct to assigned ranges.
- BEATTY:** Turn right at FYTTR direct BTY via the BTY R-105
- R-2508:** Turn right at the FYTTR, intercept the BTY 105/30, direct TUCKY, then direct R-2508

FYTTR DEPARTURE AND TRANSITIONS (FYTTR LOW)



APPROACH ROUTE DESCRIPTION

APPROACH RWY 3L/R

Cross STRYK at or above 9,500' MSL, proceed direct GASS PEAK. Cross JORDN at or above 9,500' MSL, cross GASS PEAK at or above 8,500' MSL. Proceed direct SIMNS and cross at 5,500' MSL. Cross Las Vegas Blvd at or above 4,000' MSL then to 3,500' MSL for Initial. Remain within 4 DME if LSV on turn to final.

VFR STRAIGHT-IN RWY 3L/R

Depart CRAIG & descend to be at 3,000' MSL by Las Vegas Blvd. Do not descend below 3,000' MSL until within 5 DME of LSV or 4 NM of the runway on turn to final.

APPROACH RWY 21L/R

Cross STRYK at or above 9,500' MSL, proceed direct GASS PEAK. Cross JORDN at or above 9,500' MSL, cross GASS PEAK at or above 8,500' MSL. Cross APEX at or above 4,500' MSL then direct 5NM initial. Descend to cross PHINN at 4,000' MSL, Inside 5 NM descend to 3,500' MSL.

VFR STRAIGHT-IN RWY 21L/R

Cross APEX at 4,000' MSL. Descend to be at 3,000' MSL at PHINN. Descend to 3,000' MSL at LSV 027/5.

RANGE 63B EXIT

SOUTH: Via NIXON at or above 10,000' MSL, then direct STRYK.
EAST: Via SARAH at or above 10,000' MSL, then direct GASS PEAK.



INDIAN SPRINGS, NEVADA

TACAN INS Chan 87	APCH CRS 065°	Rwy ldg TDZE 3133	9002 3113
		Arpt Elev 3113	

INDIAN SPRINGS AF AUX (KINS)

▼ * MISSED APPROACH: Straight ahead to INS TACAN, intercept INS R-outbound, cross 17 DME at or above 9500, then direkt KSV TACAN 114

NELLIS CON

CREECH AFB TOWER
118.30 60.60

GND CON

NOT FOR CIVIL USE

FOR USE UNDER BASIC VFR
WEATHER MINIMUMS ONLY

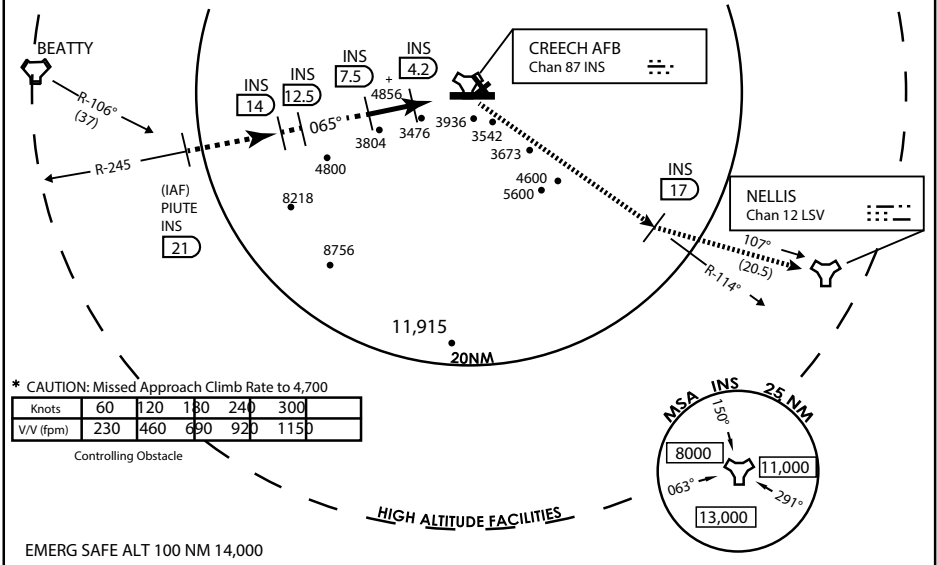
PILOT IS RESPONSIBLE FOR TERRAIN/OBSTACLE AVOIDANCE AND APPROPRIATE VFR CLOUD CLEARANCE FOR ALL

CAUTION: Descent gradients are greater than allowed under standard TERPS criteria and inbound course does not meet straight-in criteria

CAUTION: Final approach course crosses Runway centerline at MIDFIELD. Maneuvering left of course required prior to landing. Do not Maneuver farther north than the INS R- 258

Modified by viaBog 66 for use with DCS
NOT FOR REAL LIFE NAVIGATION

Modified by viaBog 66 for use with DCS
NOT FOR REAL LIFE NAVIGATION



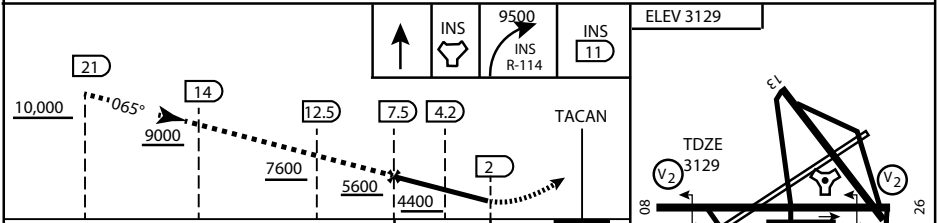
* CAUTION: Missed Approach Climb Rate to 4,700

Knots	60	120	180	240	300
V/V (fpm)	230	460	690	920	1150

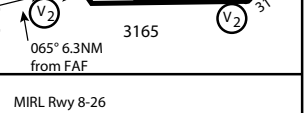
Controlling Obstacle

HIGH ALTITUDE FACILITIES

EMERG SAFE ALT 100 NM 14,000



CATEGORY	A	B	C	D	E
S-8	3760-1 1/2	627 (700-1 1/2)	3760-1 3/4 627 (700-1 3/4)	3760-2 627 (700-2)	3760-2 1/4 627 (700-2 1/4)
CIRCLING	NOT AUTHORIZED				



CITY OF INDIAN, NEVADA

INDIAN SPRINGS AF AUX (KINS)

(FOR DAY VFR USE ONLY)



