

MISSION DATA CARD

OPORD		Callsign		Mission		Date/Time	
3418/2024		Edelweiss 1		Training		212000NOV24	
Task	masking movements					Freq	
AO	SE Nellis					133.5	
Departure				Recovery			
HELICOPTER DEP				HELICOPTER ARR			
#	Callsign	Pilot	IFF	TCN	LSR	NET	
-1	Edelweiss 1-1	Mütze	1711	1Y	1711		
-2	Edelweiss 1-2	Remotex	1712	64Y	1712		
-3	Edelweiss 1-3	Warblade	1713	64X	1713		

LOADOUT

A/A		GUN	100% HEDP
A/G	8xAGM114K	CHF	30
POD		FLR	60
TKS		FUEL	100%

TOLD

	Takeoff	Target	Joker	Bingo	Land
FUEL	2513				

AIRBASES

	Name	TCN	ATIS	GND	TWR	RWY	Elev	ILS
Dep	Nellis AFB	12X	270.1	275.8	327.0	21L	1850	109.1
Arr	Nellis AFB	12X	270.1	275.8	327.0	21L	1850	109.1

FLIGHTPLAN

#	Name	Navaid/Coords/DME	ALT	TOT
1	SOUTH GAP	LSV 160/2.9 (N36 11.940 W115 00.400)		

COMMS

Radio	Usage
1	133.50
2	327.0

OTHER FLIGHTS

Callsign	Mission	Airframe	Freq	TCN	Grpld	Laser
Raptor 1	Training	4x F-16C	134.0	1/64		162X
AO	BVR Y	Task	BVR			
T-Rex 1	Training	2x A-10C	132.15	1/64	25	165X
AO	R64	Task	Bomb Training			

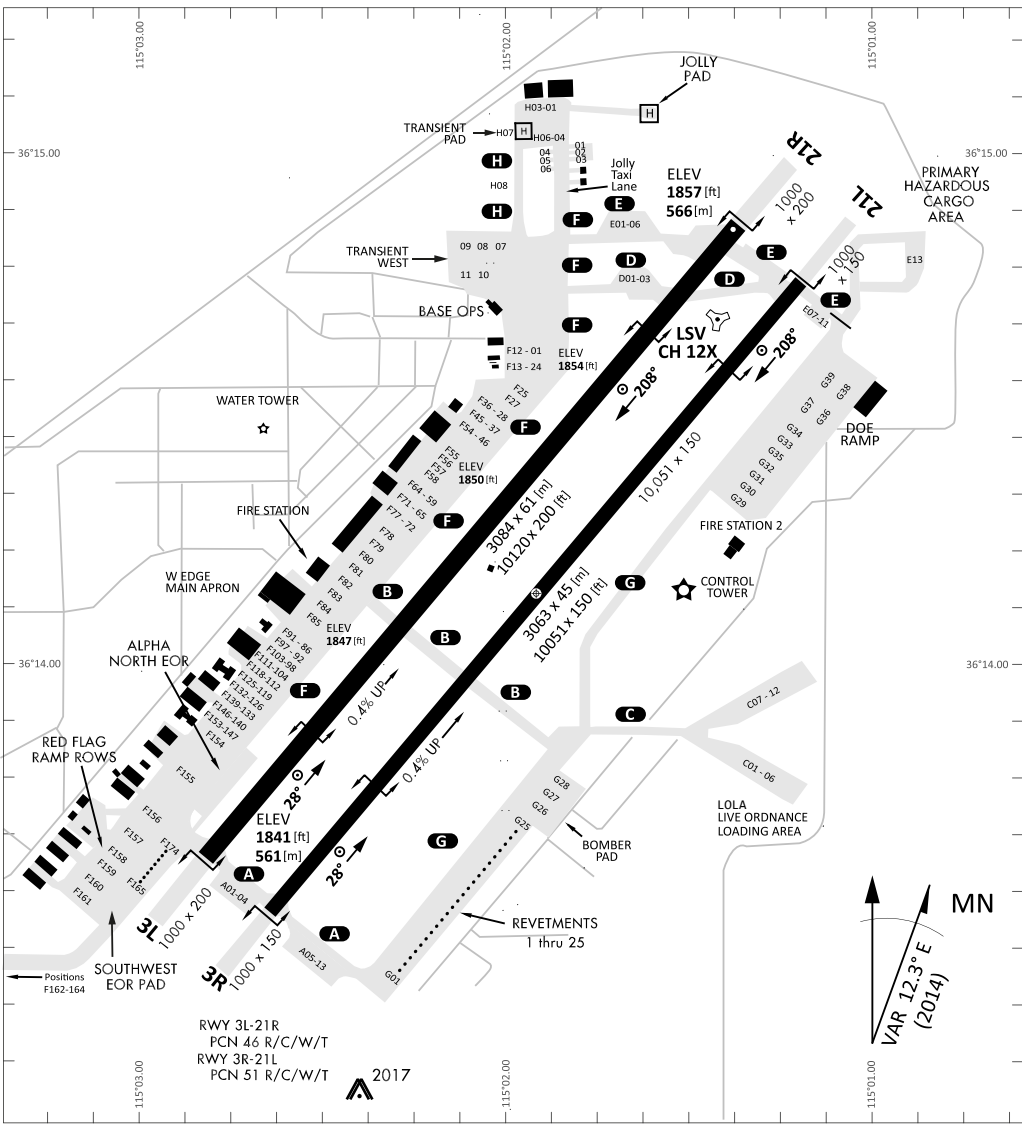
RADIO CHANNELS

#	Freq	Name
1		Flight/Squadron specific
2	289.4	Nellis Clearance Delivery
3	275.8	Nellis Ground
4	327.0	Nellis Tower
5	385.4	Nellis Approach/Departure West
6	273.55	Nellis Approach/Departure East
7	317.525	Nellis Control -- Sally
8	254.4	Nellis Control-- Lee
9	305.6	SOF Bullseye
10	343.725	EMERGENCY SINGLE FRQ
11	270.1	Nellis ATIS
12	360.625	Creech AFB Tower
13	250.1	HAVE QUICK 13
14	251.1	HAVE QUICK 14
15	252.1	HAVE QUICK 15
16	377.8	Blackjack
17	265.0	KC-135 AR-641A
18	360.8	KC-135MPRS AR-635
19	319.8	KC-135MPRS AR-625
20	300.05	KC-135 AR-231V

RAMROD										
0	1	2	3	4	5	6	7	8	9	
F	U	M	I	G	A	T	O	R	S	
KTC 1400 C										
	0	1	2	3	4	5	6	7	8	9
A	EKBH	OUS	PIA	XL	TF	QVR	YC	JD	MG	WN
B	KRCA	FSG	VHB	XE	YN	MJD	TQ	PO	IL	UW
C	FXPQ	BKJ	DOH	AT	LR	MWY	IG	US	VN	CE
D	FIDU	PLN	JYS	XC	VB	EHO	RT	MW	AG	KQ
E	DNFX	UHY	EJB	OR	GS	QMT	PC	IA	VW	LK
F	KEXV	NTS	AFP	IQ	JO	UDH	LW	RM	GB	CY
G	IKHP	LYT	CAJ	ES	WQ	FUX	OV	BN	RD	MG
H	VNMU	SEF	YPH	OA	TD	QXI	BG	LK	CR	WJ
I	HYCV	NWU	LJI	BX	RM	GQE	TO	FA	KP	DS
J	SHGV	WKI	QFA	YP	EL	RTX	BU	DJ	OM	NC
K	XTBQ	GPJ	FHD	NS	VE	RLU	WM	YO	IC	KA
L	BYFQ	KCS	HOU	MT	XJ	GWE	DA	NL	PI	RV
M	LFSW	RUT	XGK	OY	CV	EDJ	PA	HM	NI	QB
N	GUCM	OSP	YHI	AQ	TX	DWR	BN	LV	JF	KE
O	BCOW	PHV	IAL	TN	MF	DGU	JS	ER	QX	KY
P	IEXQ	JSH	OAP	LV	BY	RKG	WU	MN	FC	DT
Q	TXRP	UYF	JEB	MH	LV	GCN	QS	DA	KO	IW
R	MVDJ	QUS	GET	HI	KW	OCF	LX	YB	AR	NP
S	YLHP	QKJ	SDA	NX	GO	WFU	CR	EB	MI	TV
T	IMBN	UGY	WCJ	FS	AV	QOE	KD	RH	XP	TL
U	JBGF	CUR	OPA	HN	YS	KTE	WM	LD	VI	QX
V	LXVM	BDU	QKI	EN	AY	GTW	SR	FP	JH	OC
W	HANJ	GXS	OEC	LP	DK	WBV	IT	MQ	FR	YU
X	JRFL	HEA	GWT	QN	BU	KDX	OS	IC	YV	PM
Y	NASB	CJV	LEG	WD	QH	TFM	UR	IY	OK	XP

NAVAIDS

Id	Name	Channel	Position	Elevation
BCE	Bryce Canyon	75	N3741.35 W11218.23	9040
BIH	Bishop	33	N3722.62 W11821.99	4114
BLD	Boulder	114	N3559.75 W11451.82	3650
BTY	Beatty	94	N3648.54 W11644.86	2925
CDC	Cedar City	120	N3747.24 W11304.90	5463
DAG	Daggett	79	N3457.75 W11634.69	1760
EED	Needles	99	N3445.96 W11428.43	650
GFS	Goffs	91	N3507.87 W11510.59	4019
GRL	Groom Lake	18	N3713.91 W11548.16	4475
HEC	Hector	74	N3447.83 W11627.78	1854
ILC	Wilson Creek	110	N3815.02 W11423.65	9318
INS	Creech AFB	87	N3635.20 W11540.12	3101
LAS	McCarran Intl	116	N3604.78 W11509.59	2142
LSV	Nellis	12	N3614.68 W11501.50	1864
MLF	Milford	58	N3821.62 W11300.79	4977
MMM	Mormon Mesa	90	N3646.16 W11416.65	2120
MVA	Mina	98	N3833.92 W11801.97	7860
OAL	Coale Dale	124	N3800.20 W11746.23	4800
PGS	Peach Springs	57	N3537.48 W11332.67	4754
TPH	Tonopah Muni	119	N3801.84 W11702.01	5330
TQQ	Silverbow	77	N3748.00 W11647.00	5500
UTI	St George	23	N3705.29 W11335.53	2871



RWY 3L-21R
 PCN 46 R/C/W/T
 RWY 3R-21L
 PCN 51 R/C/W/T
 2017

PAR	RWY	CAT	MINIMA		ARP	ELEV	Scale 1:35'500	
	21L	A B D E	2057 - 0.8 200	(200-0.8/1.6) GS 3°	36° 14.060° N 115° 01.058° W	1857 [ft] 566 [m]	0 300 600 900 1200 1500 [m]	
	3R	A B D E	2057 - 0.8 200	(200-0.8/1.6) GS 3°			0 1000 2000 3000 4000 5000 [ft]	
SRA	21R	A C D E	2257 - 1.2 350	(350-1.2/1.6)				
	3L	A C D E	2257 - 1.2 350	(350-1.2/1.6)				

RWY	TORA	TODA	ASDA	LDA	PSN	THR	ALS
21L	10051 [ft] 3063 [m]	11051 [ft] 3368 [m]	11051 [ft] 3368 [m]	10051 [ft] 3063 [m]	36°14.043' N	115°01.018' W	⊕
3R	10120 [ft] 3084 [m]	11120 [ft] 3398 [m]	11120 [ft] 3398 [m]	10120 [ft] 3084 [m]	36°13.029' N	115°02.038' W	

ATIS	NELLIS GROUND	NELLIS TOWER	NELLIS CONTROL	TACAN	ILS RWY 21L	NELLIS EAST	NELLIS WEST
270.100 MHz	275.800 121.800	327.000 132.55	317.525	LSV 12X	109.10 Mhz	384.400	385.000

HELICOPTER ARR/DEP VAD-CHART | VALID 2014

NELLIS AFB (KLSV)
LAS VEGAS, NEVADA

ATIS
270.100
NELLIS GROUND
275.800
NELLIS TOWER
327.000
BLACKJACK
377.800

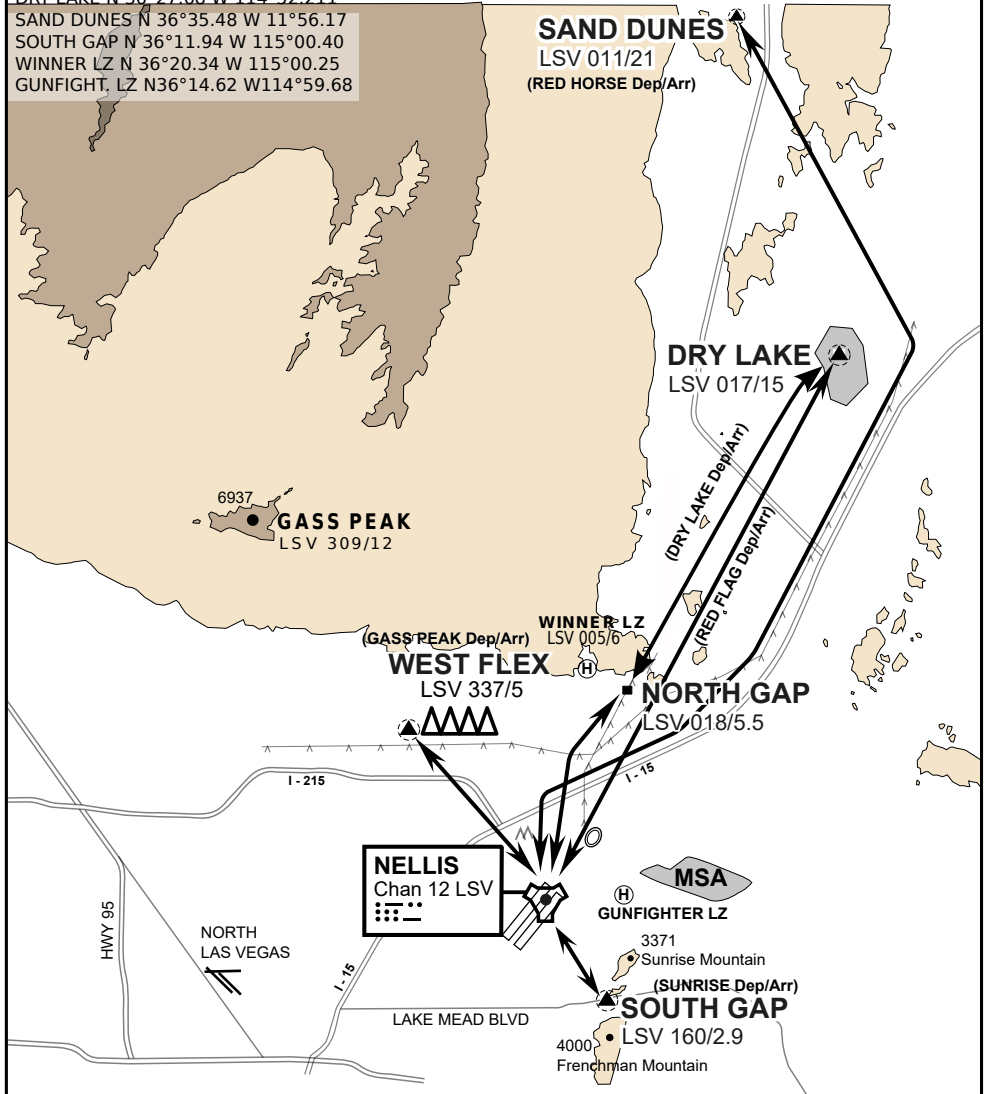
CAUTION: If unable to comply
with restrictions advise ATC
prior to departure.

VMC ONLY

if below WX Minima request SVFR



JOLLY PAD N 36°15.08 W 115°01.65
WEST FLEX N 36°18.64 W 115°08.00
NORTH GAP N 36°20.00 W 114°59.30
DRY LAKE N 36°27.68 W 114°52.211
SAND DUNES N 36°35.48 W 11°56.17
SOUTH GAP N 36°11.94 W 115°00.40
WINNER LZ N 36°20.34 W 115°00.25
GUNFIGHT, LZ N36°14.62 W114°59.68



vJABeG32NTRR NAV CHART

HELICOPTER ARRIVAL AND DEPARTURES ROUTES

v.110 22APR20

HELICOPTER ARR/DEP VAD-CHART | VALID 2014

NELLIS AFB (KLSV)
LAS VEGAS, NEVADA

ATIS
270.100
NELLIS GROUND
275.800
NELLIS TOWER
327.000
BLACKJACK
377.800

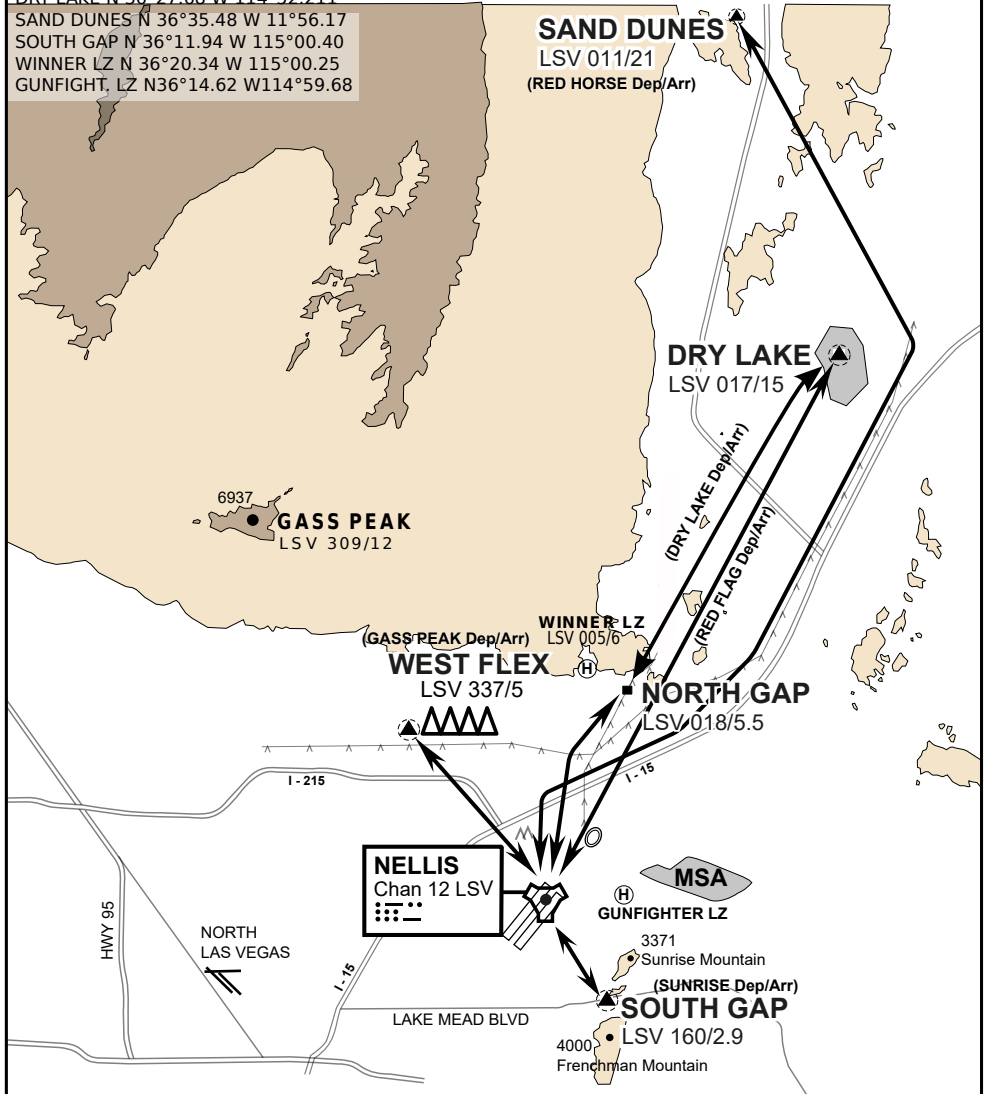
CAUTION: If unable to comply with restrictions advise ATC prior to departure.

VMC ONLY

if below WX Minima request SVFR



JOLLY PAD N 36°15.08 W 115°01.65
WEST FLEX N 36°18.64 W 115°08.00
NORTH GAP N 36°20.00 W 114°59.30
DRY LAKE N 36°27.68 W 114°52.211
SAND DUNES N 36°35.48 W 11°56.17
SOUTH GAP N 36°11.94 W 115°00.40
WINNER LZ N 36°20.34 W 115°00.25
GUNFIGHT, LZ N36°14.62 W114°59.68



vJABeG32NTRR NAV CHART

HELICOPTER ARRIVAL AND DEPARTURES ROUTES

v.110 22APR20