

MISSION DATA CARD

OPORD		Callsign		Mission		Date/Time	
3413/2024		Monster 4		Training		182000NOV24	
Task	Gun Training					Freq	
AO	Range 63					132.25	
Departure				Recovery			
FYTTR LOW				STRYK			
#	Callsign	Pilot	IFF	TCN	LSR	NET	
-1	Monster 4-1	Crusader	1651	1Y	1621	24/01	
-2	Monster 4-2	Toolface	1652	64Y	1622	24/02	
-3	Monster 4-3	addiks	1653	64X	1623	24/03	

LOADOUT

A/A	A9M	GUN	100% CM
A/G	7M282L	CHF	120
POD	A184L, TGP	FLR	360
TKS		FUEL	80%

TOLD

	Takeoff	Target	Joker	Bingo	Land
FUEL	8869				

AIRBASES

	Name	TCN	ATIS	GND	TWR	RWY	Elev	ILS
Dep	Nellis AFB	12X	270.1	275.8	327.0	21L	1850	109.1
Arr	Nellis AFB	12X	270.1	275.8	327.0	21L	1850	109.1
Div	Creech AFB	87X	290.45	275.8	360.6			

FLIGHTPLAN

#	Name	Navaid/Coords/DME	ALT	TOT
1	Nellis	N36 14.680 W115 01.500		
2	FLEX	LSV 337/5 (N36 18.620 W115 02.360)	3000	
3	FYTTR	LSV 269/33 (N36 21.440 W115 41.470)	12000	
4	Range 63B	N36 34.499 W115 26.329	12000	
5	STRYK	LSV 282/26 (N36 25.620 W115 30.700)	9500	
6	GASS PEAK	LSV 309/12 (N36 24.140 W115 10.660)	8500	
7	SIMNS	LSV 276/8 (N36 17.340 W115 10.750)	5500	
8	CRAIG	LSV 263/5.5 (N36 15.250 W115 08.270)	5000	
9	APEX	LSV 027/09 (N36 21.580 W114 54.340)	4500	
10	Nellis	N36 14.680 W115 01.500		

COMMS

Radio	Usage
1	132.25
2	11-3-4-16-11-4-3
3	32.00

NOTES

Der Klassiker. Gun runs in der Range 63. Targets = Strafe Lanes 5-10

Nach FYTTR in Trail Formation in die Range.

Pattern aufbauen und zuerst ein Dry Run über die Strafe Lanes fliegen.

Der Angriff erfolgt aus dem Süden mit einem final Attack Heading von 355 Grad.

Mit der Strafe Lane 5 beginnen und dann jeweils eine Strafe Lane weiter anfliegen.

Die Angriffe sollten im 30 Grad Winkel für die Strafe Lanes 5-7 und 45 Grad Winkel für die Strafe Lanes 8-10 erfolgen.

Ziel ist es heute mit mehr Präzession die Gun einzusetzen, um simuliert selektierte Targets auszuschalten und um ein Danger Close zu simulieren.

Mit andern Worten mit der Gun ein wenig zu sniper ;-)

Wenn Winchester on Guns und noch Zeit ist, darf gerne noch an den Tanker gegangen werden.

Das kann man nicht genug üben :-)

OTHER FLIGHTS

Callsign	Mission	Airframe	Freq	TCN	Grpld	Laser
Edelweiss 1	Training	2x AH-64D	133.5	1/64		171X
AO	dry lake	Task	formations			
Edelweiss 6	Training	3x A-10C	134.65	1/64	40	166X
AO	R63, Groom Lake, Elgin/Caliente. AR641A	Task	LCR Check Dry Run			
Edelweiss 5	Training	4x F/A-18C	264.55	12/75	1	175X
AO	Range 64c	Task	Bomb Delivery, Gun Runs, Tac Turns, IFR T/O and Landing			
Raptor 1	Training	4x F-16C	134.0	1/64		162X
AO	BVR Range Y	Task	BVR Training			

RADIO CHANNELS

#	Freq	Name
1		Flight/Squadron specific
2	289.4	Nellis Clearance Delivery
3	275.8	Nellis Ground
4	327.0	Nellis Tower
5	385.4	Nellis Approach/Departure West
6	273.55	Nellis Approach/Departure East
7	317.525	Nellis Control -- Sally
8	254.4	Nellis Control-- Lee
9	305.6	SOF Bullseye
10	343.725	EMERGENCY SINGLE FRQ
11	270.1	Nellis ATIS
12	360.625	Creech AFB Tower
13	250.1	HAVE QUICK 13
14	251.1	HAVE QUICK 14
15	252.1	HAVE QUICK 15
16	377.8	Blackjack
17	265.0	KC-135 AR-641A
18	360.8	KC-135MPRS AR-635
19	319.8	KC-135MPRS AR-625
20	300.05	KC-135 AR-231V

RAMROD

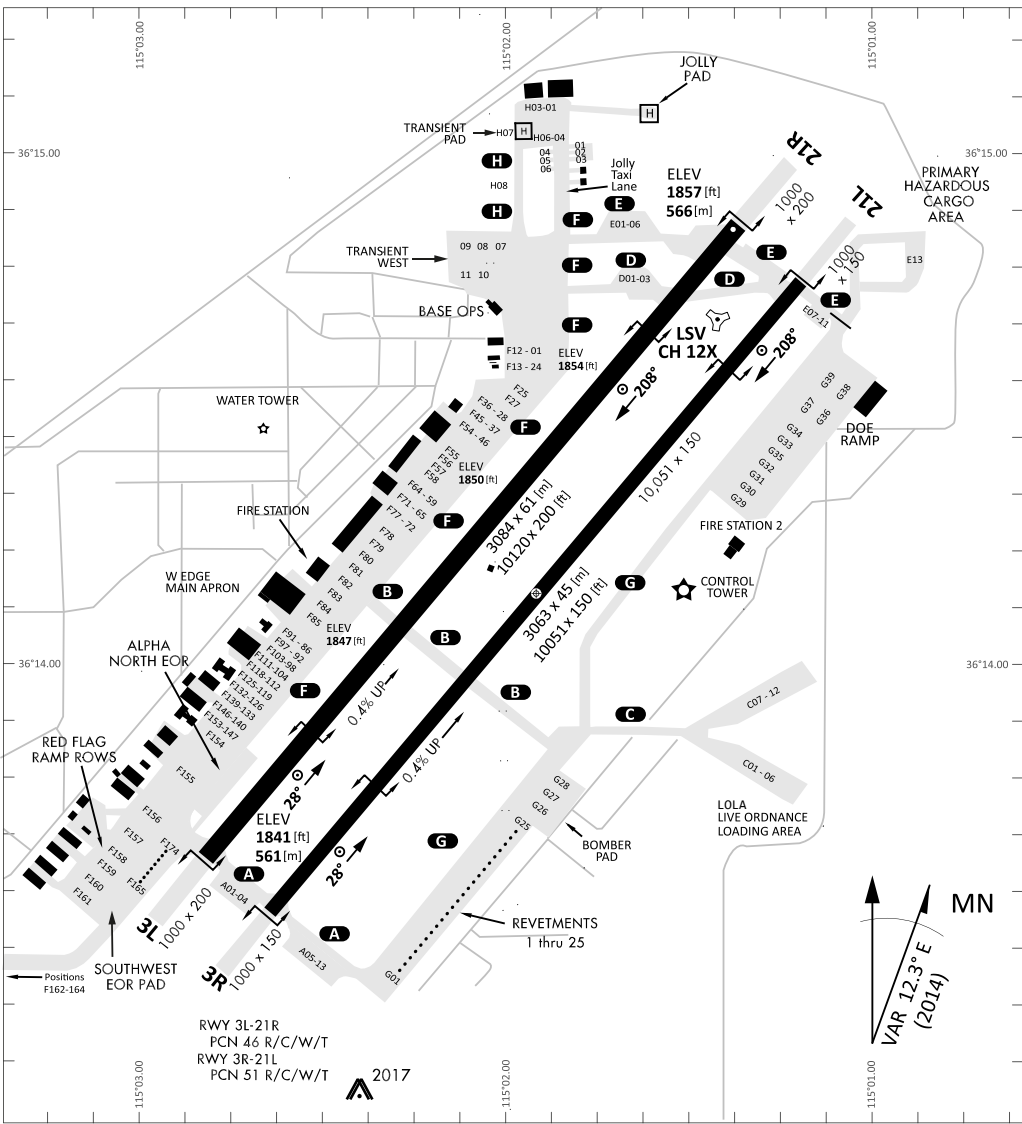
0	1	2	3	4	5	6	7	8	9
M	O	N	E	T	A	R	I	L	Y

KTC 1400 C

	0	1	2	3	4	5	6	7	8	9
A	GQNO	CFA	YEV	LT	DB	UHS	XW	JR	PM	IK
B	YPRH	NCF	QJK	MI	OU	ALV	TX	SW	GE	BD
C	OHLM	XJU	TSP	NI	DE	QBR	KV	FA	YG	CW
D	SKCV	OIG	UYL	PD	QM	TNE	WX	JF	BR	HA
E	TKDG	UPQ	HFB	YM	WJ	XLC	IS	NV	OE	AR
F	JNUY	QIH	LOD	XB	ME	GAK	TV	SW	FC	PR
G	YXIE	HKP	WBQ	VS	LA	NJG	MU	TR	OF	DC
H	SKCO	XRG	WVF	NQ	EU	JAD	HY	LM	IP	BT
I	BETU	INH	QML	YC	OF	WPV	JX	SG	AR	DK
J	PVYT	KBI	DFR	HC	ML	SOQ	UG	EJ	WA	XN
K	YHFV	ACW	TPO	JR	KQ	UDL	BM	SI	GN	EX
L	MLRU	SQH	BNA	KT	DW	XJP	VG	IO	YE	CF
M	ITDE	CSK	BGV	MW	ON	LHQ	AP	RU	FX	JY
N	TIED	QHO	GBW	LY	VJ	KPF	NC	AR	UX	MS
O	DUAK	OBW	SQI	TC	YF	NRH	EV	LJ	PM	GX
P	HJKW	VYL	GID	MC	NT	QAX	BE	SO	PR	UF
Q	PUGN	ILO	KCQ	BM	XS	HFY	RW	ED	AJ	TV
R	FTKL	PIS	XAY	CV	DR	QGB	HO	EU	NW	MJ
S	LUIV	PAT	EXS	HN	CD	YFK	RO	MJ	QB	GW
T	UPAC	ETV	SMR	JK	LG	IXY	HD	NW	FQ	OB
U	IRJX	PAW	VGC	LS	MO	EDB	KY	HU	TQ	FN
V	CTWV	NBI	PDE	JU	SM	OLH	YG	FK	AR	XQ
W	IDQJ	BKW	PXL	SH	FG	VEY	RT	MN	AU	CO
X	UHKO	AVT	IDE	MX	LY	CWQ	SF	GB	PN	RJ
Y	YRBM	KPJ	AIQ	HL	UW	CTV	SO	GN	EX	DF

NAVAIDS

Id	Name	Channel	Position	Elevation
BCE	Bryce Canyon	75	N3741.35 W11218.23	9040
BIH	Bishop	33	N3722.62 W11821.99	4114
BLD	Boulder	114	N3559.75 W11451.82	3650
BTY	Beatty	94	N3648.54 W11644.86	2925
CDC	Cedar City	120	N3747.24 W11304.90	5463
DAG	Daggett	79	N3457.75 W11634.69	1760
EED	Needles	99	N3445.96 W11428.43	650
GFS	Goffs	91	N3507.87 W11510.59	4019
GRL	Groom Lake	18	N3713.91 W11548.16	4475
HEC	Hector	74	N3447.83 W11627.78	1854
ILC	Wilson Creek	110	N3815.02 W11423.65	9318
INS	Creech AFB	87	N3635.20 W11540.12	3101
LAS	McCarran Intl	116	N3604.78 W11509.59	2142
LSV	Nellis	12	N3614.68 W11501.50	1864
MLF	Milford	58	N3821.62 W11300.79	4977
MMM	Mormon Mesa	90	N3646.16 W11416.65	2120
MVA	Mina	98	N3833.92 W11801.97	7860
OAL	Coale Dale	124	N3800.20 W11746.23	4800
PGS	Peach Springs	57	N3537.48 W11332.67	4754
TPH	Tonopah Muni	119	N3801.84 W11702.01	5330
TQQ	Silverbow	77	N3748.00 W11647.00	5500
UTI	St George	23	N3705.29 W11335.53	2871



RWY 3L-21R
 PCN 46 R/C/W/T
 RWY 3R-21L
 PCN 51 R/C/W/T
 2017

PAR	RWY	CAT	MINIMA		ARP	ELEV	Scale 1:35'500	
	21L	A B D E	2057 - 0.8 200	(200-0.8/1.6) GS 3°	36° 14.060° N 115° 01.058° W	1857 [ft] 566 [m]	0 300 600 900 1200 1500 [m]	
	3R	A B D E	2057 - 0.8 200	(200-0.8/1.6) GS 3°			0 1000 2000 3000 4000 5000 [ft]	
	21R	A C D E	2257 - 1.2 350	(350-1.2/1.6)				
	3L	A C D E	2257 - 1.2 350	(350-1.2/1.6)				

RWY	TORA	TODA	ASDA	LDA	PSN	THR	ALS
21L	10051 [ft] 3063 [m]	11051 [ft] 3368 [m]	11051 [ft] 3368 [m]	10051 [ft] 3063 [m]	36°14.043' N	115°01.018' W	⊕
3R	10120 [ft] 3084 [m]	11120 [ft] 3398 [m]	11120 [ft] 3398 [m]	10120 [ft] 3084 [m]	36°13.029' N	115°02.038' W	

ATIS	NELLIS GROUND	NELLIS TOWER	NELLIS CONTROL	TACAN	ILS RWY 21L	NELLIS EAST	NELLIS WEST
270.100 MHz	275.800 121.800	327.000 132.55	317.525	LSV 12X	109.10 Mhz	384.400	385.000

FYTTR LOW VISUAL OPERATION CHART | VALID 2014

ATIS
270.100
NELLIS GROUND
275.800
NELLIS TOWER
327.000
NELLIS CONTROL
317.525
NELLIS DEP/APP EAST
384.400
BLACKJACK
377.800

CAUTION: If unable to comply with restrictions advise ATC prior to departure.



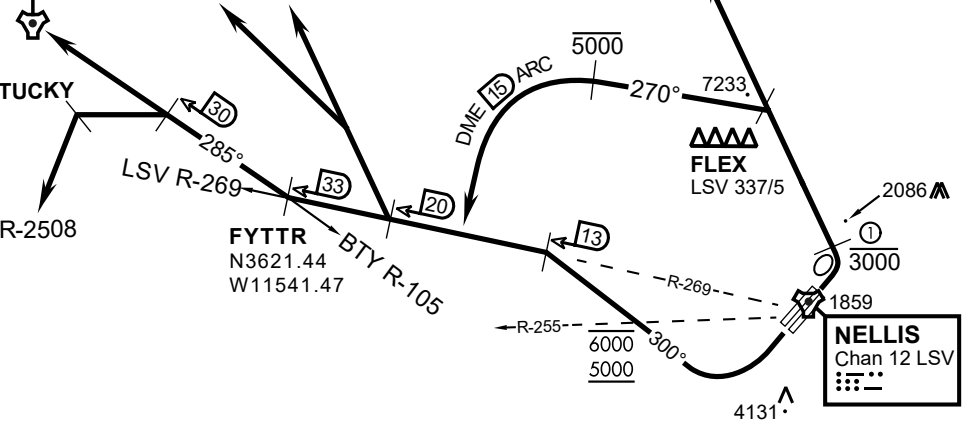
VMC ONLY

PILOT RESPONSIBLE FOR TERRAIN AVOIDANCE

① 4 NM from RWY 3L/R

BEATTY
Chan 94 BTY

RANGE 64/65
RANGE 63



v.1486502 NITTR NAV CHART

DEPARTURE ROUTE DESCRIPTION

TAKEOFF RWY 3L/R:

- Remain below 3,000' MSL until north of Race Track and turned westbound.
- Turn left within 4NM of Nellis direct FLEX. Fly north of FLEX and turn left heading 270°.
- Intercept LSV 15 DME ARC at or below 5,000' MSL.
- ARC south, intercept LSV R-269 outbound. Maintain VFR.

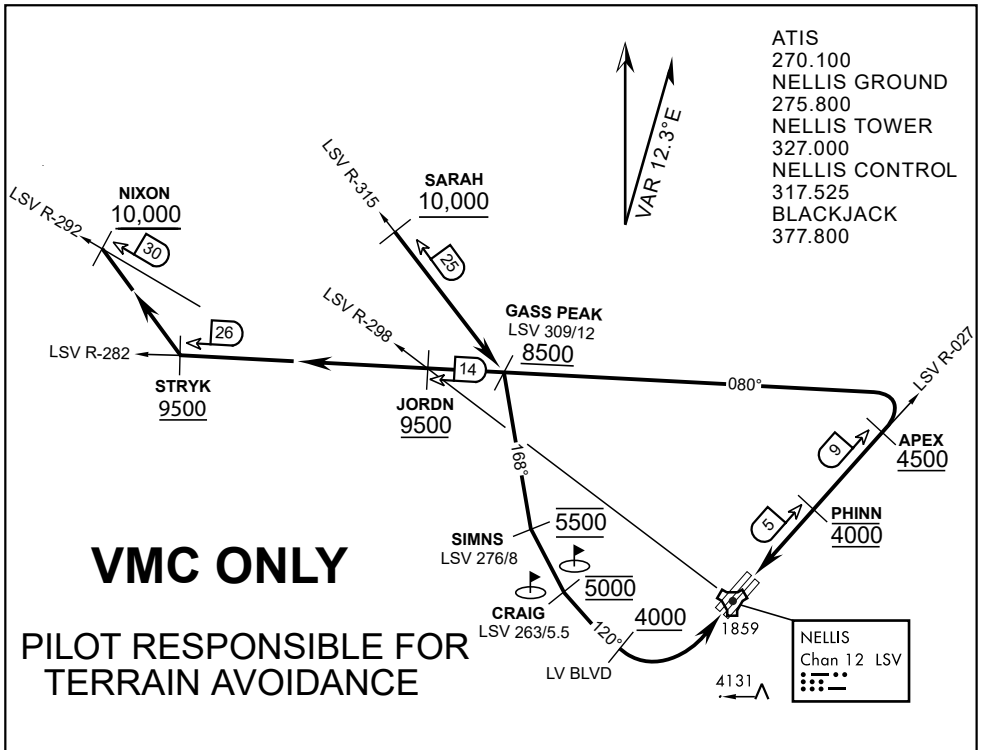
TAKEOFF RWY 21L/21R:

- Follow Noise Abatement Procedures.
- Fly runway heading until past Golf Course, turn right heading 300°.
- Cross LSV R-255 between 5,000' and 6,000' , intercept and proceed outbound on the LSV R-269.Recommend climb to 8,500' MSL or appropriate VFR altitude for overflight of North Las Vegas Training Area. Fly routing for appr. mission/transition.

TRANSITIONS:

- R-4806:** Turn right at the LSV 269/20 direct to assigned ranges.
- BEATTY:** Turn right at FYTTR direct BTY via the BTY R-105
- R-2508:** Turn right at the FYTTR, intercept the BTY 105/30, direct TUCKY, then direct R-2508

FYTTR DEPARTURE AND TRANSITIONS (FYTTR LOW)



ATIS
 270.100
 NELLIS GROUND
 275.800
 NELLIS TOWER
 327.000
 NELLIS CONTROL
 317.525
 BLACKJACK
 377.800

VMC ONLY

PILOT RESPONSIBLE FOR TERRAIN AVOIDANCE

APPROACH ROUTE DESCRIPTION

APPROACH RWY 3L/R

Cross STRYK at or above 9,500' MSL, proceed direct GASS PEAK. Cross JORDN at or above 9,500' MSL, cross GASS PEAK at or above 8,500' MSL. Proceed direct SIMNS and cross at 5,500' MSL. Cross Las Vegas Blvd at or above 4,000' MSL then to 3,500' MSL for Initial. Remain within 4 DME if LSV on turn to final.

VFR STRAIGHT-IN RWY 3L/R

Depart CRAIG & descend to be at 3,000' MSL by Las Vegas Blvd. Do not descend below 3,000' MSL until within 5 DME of LSV or 4 NM of the runway on turn to final.

APPROACH RWY 21L/R

Cross STRYK at or above 9,500' MSL, proceed direct GASS PEAK. Cross JORDN at or above 9,500' MSL, cross GASS PEAK at or above 8,500' MSL. Cross APEX at or above 4,500' MSL then direct 5NM initial. Descend to cross PHINN at 4,000' MSL, Inside 5 NM descend to 3,500' MSL.

VFR STRAIGHT-IN RWY 21L/R

Cross APEX at 4,000' MSL. Descend to be at 3,000' MSL at PHINN. Descend to 3,000' MSL at LSV 027/5.

RANGE 63B EXIT

SOUTH: Via NIXON at or above 10,000' MSL, then direct STRYK.
EAST: Via SARAH at or above 10,000' MSL, then direct GASS PEAK.



INDIAN SPRINGS, NEVADA

TACAN INS Chan 87	APCH CRS 065°	Rwy ldg TDZE 3133	9002 3113
		Arpt Elev 3113	

INDIAN SPRINGS AF AUX (KINS)

▼ * MISSED APPROACH: Straight ahead to INS TACAN, intercept INS R-outbound, cross 17 DME at or above 9500, then direkt KSV TACAN 114

NELLIS CON

CREECH AFB TOWER
118.30 60.60

GND CON

NOT FOR CIVIL USE

FOR USE UNDER BASIC VFR
WEATHER MINIMUMS ONLY

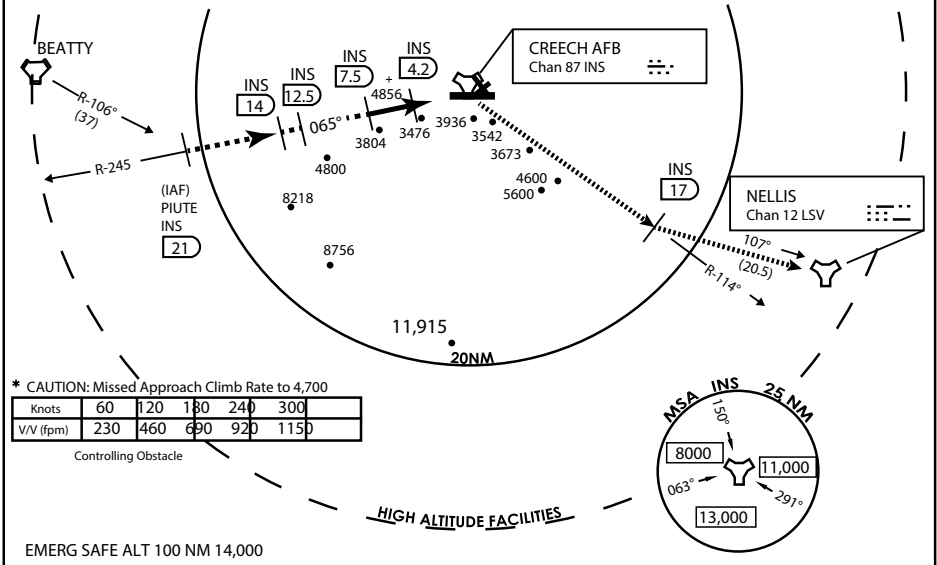
PILOT IS RESPONSIBLE FOR TERRAIN/OBSTACLE
AVOIDANCE AND
APPROPRIATE VFR CLOUD
CLEARANCE FOR ALL

CAUTION: Descent gradients are greater than allowed under standard TERPS criteria and inbound course does not meet straight-in criteria

CAUTION: Final approach course crosses Runway centerline at MIDFIELD. Maneuvering left of course required prior to landing. Do not Maneuver farther north than the INS R- 258

Modified by viaBog 66 for use with DCS
NOT FOR REAL LIFE NAVIGATION

Modified by viaBog 66 for use with DCS
NOT FOR REAL LIFE NAVIGATION



* CAUTION: Missed Approach Climb Rate to 4,700

Knots	60	120	180	240	300
V/V (fpm)	230	460	690	920	1150

Controlling Obstacle

HIGH ALTITUDE FACILITIES

EMERG SAFE ALT 100 NM 14,000

	INS 9500		INS R-114	INS 11	ELEV 3129		
	INS 21		INS 14	INS 12.5	INS 7.5	INS 4.2	
10,000		9,000		7,600		5,600	
4,400		14,000		TACAN			
CATEGORY	A	B	C	D	E		
S-8	3760-1	1/2 627 (700-1)	1/2 3760-1 3/4 627 (700-1 3/4)	3760-2 627 (700-2)	3760-2 3/4 627 (700-2 3/4)		
CIRCLING	NOT AUTHORIZED					MIRL Rwy 8-26	

CITY OF INDIAN, NEVADA

INDIAN SPRINGS AF AUX (KINS)

(FOR DAY VFR USE ONLY)



AIRPORT DIAGRAM

476 VFG

CREECH AFB (KINS)
INDIAN SPRINGS, NEVADA

ATIS
 122.5
 CREECH TOWER
 118.4 360.7 38.65
 GND CON
 118.3 275.8
 CLNC DEL

FIELD
 ELEV
 3127

HOT
 CARGO
 PAD

VAR 12.5° E

WEST EOR

BAK-12

115°41'W

CONTROL
 TOWER
 BASE
 OPS

RPA LOLA WEST

RPA LOLA EAST

LOLA / HUNG ORDNANCE

RUNWAY
 31/13
 MQ/RQ-1
 ONLY

9002 X 150

258.5°

860 X 100

313.8°

4064 X 100

199 X 100

ELEV 3127

133.8°

BAK-12

ELEV 3127

115°40'W

EAST EOR

1030 X 150

26

476 VFG JAN 2019

476 VFG JAN 2019

AIRPORT DIAGRAM

INDIAN SPRINGS, NEVADA
CREECH AFB (KINS)