

**MISSION DATA CARD**

OPORD		Callsign		Mission		Date/Time	
3411/2024		Edelweiss 6		Training		182000NOV24	
Task	LCR Check Dry Run					Freq	
AO	R63, Groom Lake, Elgin/Caliente, AR641A					134.65	
Departure				Recovery			
FYTTR LOW				STRYK			
#	Callsign	Pilot	IFF	TCN	LSR	NET	
-1	Edelweiss 6-1	Stoner	1761	1Y	1661	40/01	
-2	Edelweiss 6-2	Lenzi	1762	64Y	1662	40/02	
-3	Edelweiss 6-3	Marsy	1763	64X	1663	40/03	

**LOADOUT**

A/A	A9M	GUN	100% CM
A/G	4xM82, 7M282L	CHF	240
POD	TGP, A184L	FLR	240
TKS		FUEL	100%

**TOLD**

	Takeoff	Target	Joker	Bingo	Land
FUEL	11087				

**AIRBASES**

	Name	TCN	ATIS	GND	TWR	RWY	Elev	ILS
Dep	Nellis AFB	12X	270.1	275.8	327.0	21L	1850	109.1
Arr	Nellis AFB	12X	270.1	275.8	327.0	21L	1850	109.1
Div	Nellis AFB	12X	270.1	275.8	327.0	21L	1850	109.1

**COMMS**

Radio	Usage
1	134.65
2	11-3-4-16-11-4-3
3	32.00

## NOTES

Dream Four Depature after TnGs

**SUPPORT****Tanker**

Callsign	TCN	Freq	ALT	TAS
TEXACO 1	94Y	265.0	17000	290
Pos	AR-641A: CDC 242/78 (N3728 W11439)			

## OTHER FLIGHTS

Callsign	Mission	Airframe	Freq	TCN	Grpld	Laser
Edelweiss 1	Training	2x AH-64D	133.5	1/64		171X
AO	dry lake	Task	formations			
Edelweiss 5	Training	4x F/A-18C	264.55	12/75	1	175X
AO	Range 64c	Task	Bomb Delivery, Gun Runs, Tac Turns, IFR T/O and Landing			
Monster 4	Training	3x A-10C	132.25	1/64	24	162X
AO	Range 63	Task	Gun Training			
Raptor 1	Training	4x F-16C	134.0	1/64		162X
AO	BVR Range Y	Task	BVR Training			

**RADIO CHANNELS**

#	Freq	Name
1		Flight/Squadron specific
2	289.4	Nellis Clearance Delivery
3	275.8	Nellis Ground
4	327.0	Nellis Tower
5	385.4	Nellis Approach/Departure West
6	273.55	Nellis Approach/Departure East
7	317.525	Nellis Control -- Sally
8	254.4	Nellis Control-- Lee
9	305.6	SOF Bullseye
10	343.725	EMERGENCY SINGLE FRQ
11	270.1	Nellis ATIS
12	360.625	Creech AFB Tower
13	250.1	HAVE QUICK 13
14	251.1	HAVE QUICK 14
15	252.1	HAVE QUICK 15
16	377.8	Blackjack
17	265.0	KC-135 AR-641A
18	360.8	KC-135MPRS AR-635
19	319.8	KC-135MPRS AR-625
20	300.05	KC-135 AR-231V

**RAMROD**

0	1	2	3	4	5	6	7	8	9
M	O	N	E	T	A	R	I	L	Y

**KTC 1400 C**

	0	1	2	3	4	5	6	7	8	9
A	GQNO	CFA	YEV	LT	DB	UHS	XW	JR	PM	IK
B	YPRH	NCF	QJK	MI	OU	ALV	TX	SW	GE	BD
C	OHLM	XJU	TSP	NI	DE	QBR	KV	FA	YG	CW
D	SKCV	OIG	UYL	PD	QM	TNE	WX	JF	BR	HA
E	TKDG	UPQ	HFB	YM	WJ	XLC	IS	NV	OE	AR
F	JNUY	QIH	LOD	XB	ME	GAK	TV	SW	FC	PR
G	YXIE	HKP	WBQ	VS	LA	NJG	MU	TR	OF	DC
H	SKCO	XRG	WVF	NQ	EU	JAD	HY	LM	IP	BT
I	BETU	INH	QML	YC	OF	WPV	JX	SG	AR	DK
J	PVYT	KBI	DFR	HC	ML	SOQ	UG	EJ	WA	XN
K	YHFV	ACW	TPO	JR	KQ	UDL	BM	SI	GN	EX
L	MLRU	SQH	BNA	KT	DW	XJP	VG	IO	YE	CF
M	ITDE	CSK	BGV	MW	ON	LHQ	AP	RU	FX	JY
N	TIED	QHO	GBW	LY	VJ	KPF	NC	AR	UX	MS
O	DUAK	OBW	SQI	TC	YF	NRH	EV	LJ	PM	GX
P	HJKW	VYL	GID	MC	NT	QAX	BE	SO	PR	UF
Q	PUGN	ILO	KCQ	BM	XS	HFY	RW	ED	AJ	TV
R	FTKL	PIS	XAY	CV	DR	QGB	HO	EU	NW	MJ
S	LUIV	PAT	EXS	HN	CD	YFK	RO	MJ	QB	GW
T	UPAC	ETV	SMR	JK	LG	IXY	HD	NW	FQ	OB
U	IRJX	PAW	VGC	LS	MO	EDB	KY	HU	TQ	FN
V	CTWV	NBI	PDE	JU	SM	OLH	YG	FK	AR	XQ
W	IDQJ	BKW	PXL	SH	FG	VEY	RT	MN	AU	CO
X	UHKO	AVT	IDE	MX	LY	CWQ	SF	GB	PN	RJ
Y	YRBM	KPJ	AIQ	HL	UW	CTV	SO	GN	EX	DF

**NAVAIDS**

<b>Id</b>	<b>Name</b>	<b>Channel</b>	<b>Position</b>	<b>Elevation</b>
BCE	Bryce Canyon	75	N3741.35 W11218.23	9040
BIH	Bishop	33	N3722.62 W11821.99	4114
BLD	Boulder	114	N3559.75 W11451.82	3650
BTY	Beatty	94	N3648.54 W11644.86	2925
CDC	Cedar City	120	N3747.24 W11304.90	5463
DAG	Daggett	79	N3457.75 W11634.69	1760
EED	Needles	99	N3445.96 W11428.43	650
GFS	Goffs	91	N3507.87 W11510.59	4019
GRL	Groom Lake	18	N3713.91 W11548.16	4475
HEC	Hector	74	N3447.83 W11627.78	1854
ILC	Wilson Creek	110	N3815.02 W11423.65	9318
INS	Creech AFB	87	N3635.20 W11540.12	3101
LAS	McCarran Intl	116	N3604.78 W11509.59	2142
LSV	Nellis	12	N3614.68 W11501.50	1864
MLF	Milford	58	N3821.62 W11300.79	4977
MMM	Mormon Mesa	90	N3646.16 W11416.65	2120
MVA	Mina	98	N3833.92 W11801.97	7860
OAL	Coale Dale	124	N3800.20 W11746.23	4800
PGS	Peach Springs	57	N3537.48 W11332.67	4754
TPH	Tonopah Muni	119	N3801.84 W11702.01	5330
TQQ	Silverbow	77	N3748.00 W11647.00	5500
UTI	St George	23	N3705.29 W11335.53	2871





RWY 3L-21R  
 PCN 46 R/C/W/T  
 RWY 3R-21L  
 PCN 51 R/C/W/T  
 2017

PAR	RWY	CAT	MINIMA		ARP	ELEV	Scale 1:35'500	
	21L	A B D E	2057 - 0.8 200 (200-0.8/1.6)	GS 3°	36° 14.060° N 115° 01.058° W	1857 [ft] 566 [m]	0 300 600 900 1200 1500 [m]	
	3R	A B D E	2057 - 0.8 200 (200-0.8/1.6)	GS 3°			0 1000 2000 3000 4000 5000 [ft]	
SRA	21R	A C D E	2257 - 1.2 350 (350-1.2/1.6)					
	3L	A C D E	2257 - 1.2 350 (350-1.2/1.6)					

RWY	TORA	TODA	ASDA	LDA	PSN	THR	ALS
21L	10051 [ft] 3063 [m]	11051 [ft] 3368 [m]	11051 [ft] 3368 [m]	10051 [ft] 3063 [m]	36°14.043' N	115°01.018' W	⊕
3R	10120 [ft] 3084 [m]	11120 [ft] 3398 [m]	11120 [ft] 3398 [m]	10120 [ft] 3084 [m]	36°13.029' N	115°02.038' W	

ATIS	NELLIS GROUND	NELLIS TOWER	NELLIS CONTROL	TACAN	ILS RWY 21L	NELLIS EAST	NELLIS WEST
270.100 MHz	275.800   121.800	327.000   132.55	317.525	LSV 12X	109.10 Mhz	384.400	385.000

# FYTTR LOW VISUAL OPERATION CHART | VALID 2014

ATIS  
270.100  
NELLIS GROUND  
275.800  
NELLIS TOWER  
327.000  
NELLIS CONTROL  
317.525  
NELLIS DEP/APP EAST  
384.400  
BLACKJACK  
377.800

CAUTION: If unable to comply with restrictions advise ATC prior to departure.



## VMC ONLY

### PILOT RESPONSIBLE FOR TERRAIN AVOIDANCE

① 4 NM from RWY 3L/R

**BEATTY**  
Chan 94 BTY

RANGE 64/65  
RANGE 63

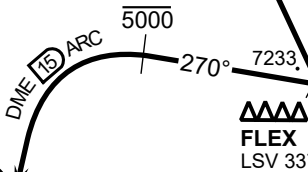
TUCKY

R-2508

LSV R-269

**FYTTR**  
N3621.44  
W11541.47

BTY R-105



**FLEX**  
LSV 337/5

2086 M

①

3000

**NELLIS**  
Chan 12 LSV



4131 M



### DEPARTURE ROUTE DESCRIPTION

#### TAKEOFF RWY 3L/R:

- Remain below 3,000' MSL until north of Race Track and turned westbound.
- Turn left within 4NM of Nellis direct FLEX. Fly north of FLEX and turn left heading 270°.
- Intercept LSV 15 DME ARC at or below 5,000' MSL.
- ARC south, intercept LSV R-269 outbound. Maintain VFR.

#### TAKEOFF RWY 21L/21R:

- Follow Noise Abatement Procedures.
- Fly runway heading until past Golf Course, turn right heading 300°.
- Cross LSV R-255 between 5,000' and 6,000' , intercept and proceed outbound on the LSV R-269.Recommend climb to 8,500' MSL or appropriate VFR altitude for overflight of North Las Vegas Training Area. Fly routing for appr. mission/transition.

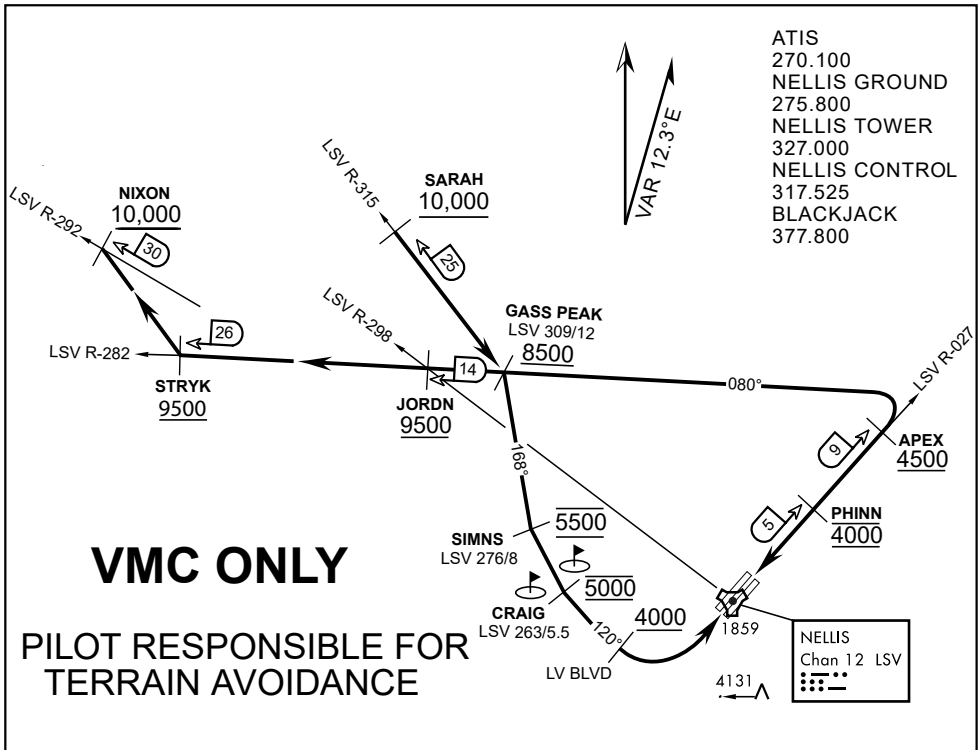
#### TRANSITIONS:

**R-4806:** Turn right at the LSV 269/20 direct to assigned ranges.

**BEATTY:** Turn right at FYTTR direct BTY via the BTY R-105

**R-2508:** Turn right at the FYTTR, intercept the BTY 105/30, direct TUCKY, then direct R-2508

## FYTTR DEPARTURE AND TRANSITIONS (FYTTR LOW)



**APPROACH ROUTE DESCRIPTION**

**APPROACH RWY 3L/R**

Cross STRYK at or above 9,500' MSL, proceed direct GASS PEAK. Cross JORDN at or above 9,500' MSL, cross GASS PEAK at or above 8,500' MSL. Proceed direct SIMNS and cross at 5,500' MSL. Cross Las Vegas Blvd at or above 4,000' MSL then to 3,500' MSL for Initial. Remain within 4 DME if LSV on turn to final.

**VFR STRAIGHT-IN RWY 3L/R**

Depart CRAIG & descend to be at 3,000' MSL by Las Vegas Blvd. Do not descend below 3,000' MSL until within 5 DME of LSV or 4 NM of the runway on turn to final.

**APPROACH RWY 21L/R**

Cross STRYK at or above 9,500' MSL, proceed direct GASS PEAK. Cross JORDN at or above 9,500' MSL, cross GASS PEAK at or above 8,500' MSL. Cross APEX at or above 4,500' MSL then direct 5NM initial. Descend to cross PHINN at 4,000' MSL, Inside 5 NM descend to 3,500' MSL.

**VFR STRAIGHT-IN RWY 21L/R**

Cross APEX at 4,000' MSL. Descend to be at 3,000' MSL at PHINN. Descend to 3,000' MSL at LSV 027/5.

**RANGE 63B EXIT**

**SOUTH:** Via NIXON at or above 10,000' MSL, then direct STRYK.  
**EAST:** Via SARAH at or above 10,000' MSL, then direct GASS PEAK.

# TACAN RWY 21L

TACAN LSV Chan 12	APCH CRS 207°	Rwy Idg 10,055 TDZE 1866 Arprt Elev 1870
----------------------	------------------	--

AL-227 [USAF]

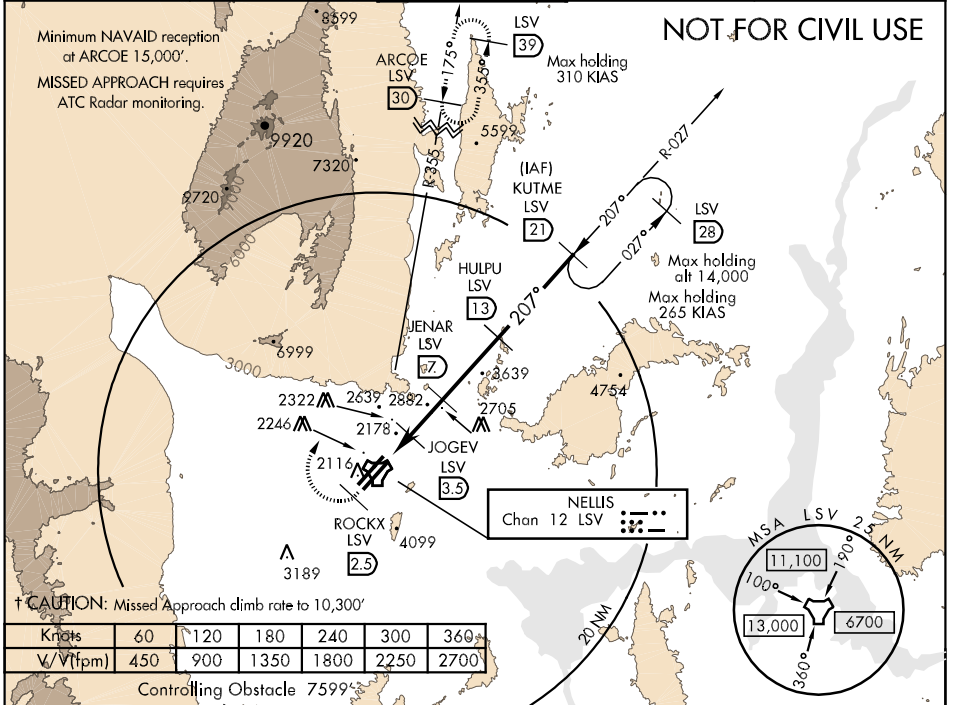
NELLIS AFB (KLSV)

▼ \* When ALS inop, increase CAT AB RVR to 50, vis to 1 mile, CAT C vis to 1¼ miles, CAT D vis to 2 miles, CAT E vis to 2½ miles.  
\*\* Circling not authorized E of Rwy 3R-21L.



† MISSED APPROACH: Climb to 15,000, heading 209° to 2.5 DME (ROCKX), then climbing right turn heading 020° to join LSV TACAN R-355 to ARCOE and hold, continue climb in hold to 15,000.

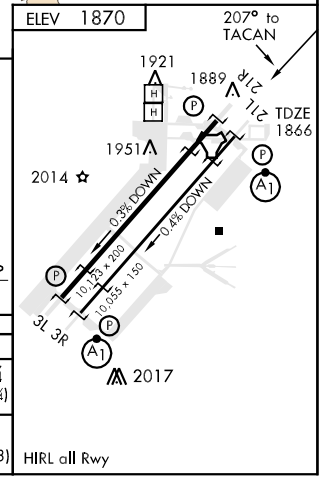
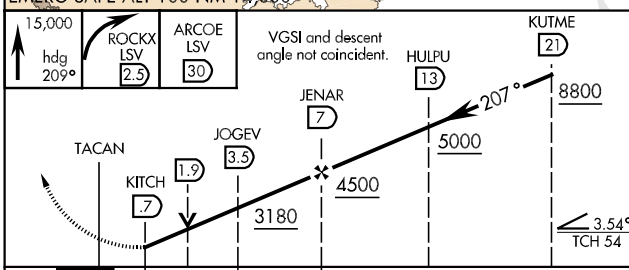
ATIS 270.1	NELLIS APP CON 124.95 273.55	NELLIS TOWER 132.55 327.0	GND CON 121.8 275.8	CINC DEL 120.9 289.4
---------------	---------------------------------	------------------------------	------------------------	-------------------------



Knots	60	120	180	240	300	360
√ V (fpm)	450	900	1350	1800	2250	2700

Controlling Obstacle 7599'

EMERG SAFE ALT 100 NM 14,000'

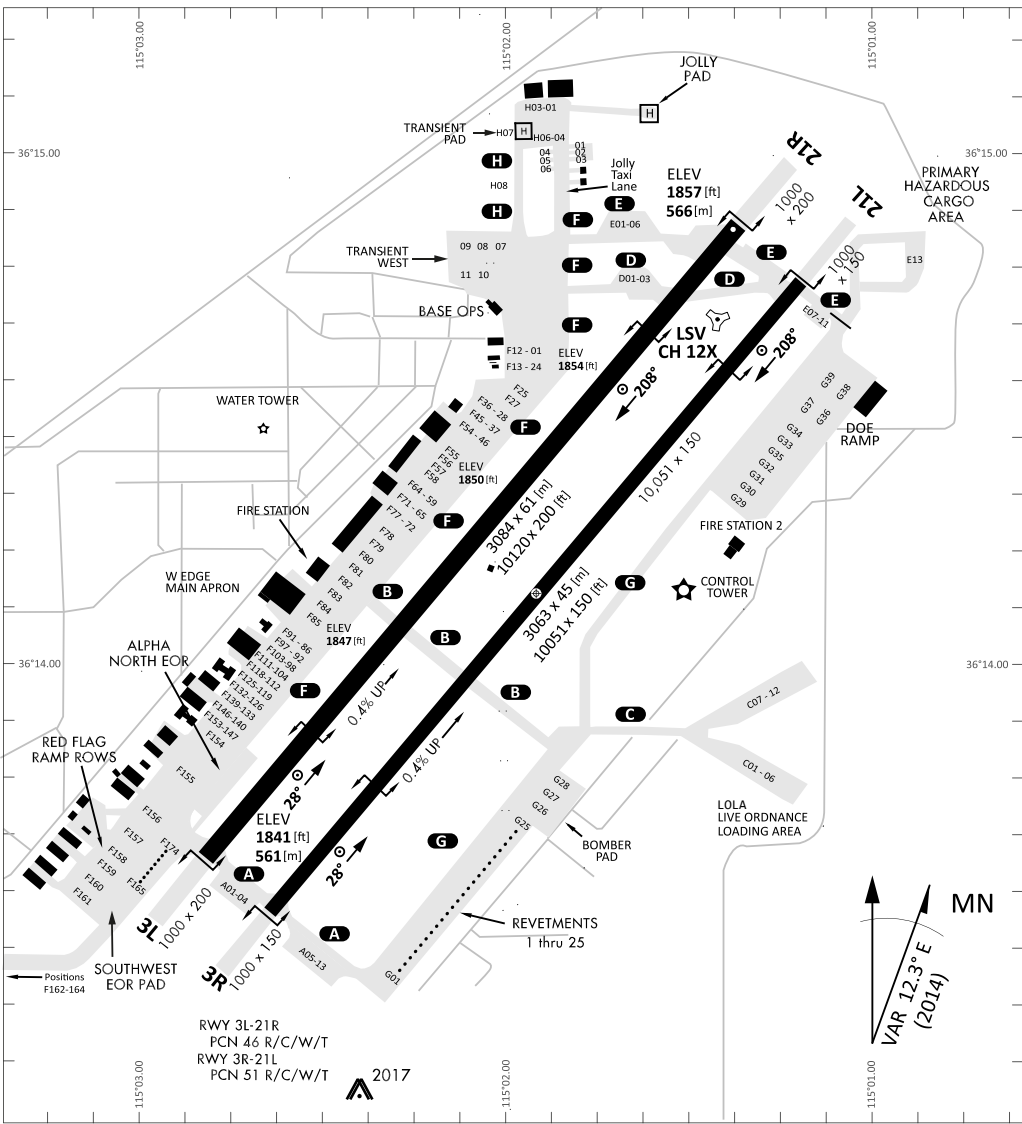


CATEGORY	A	B	C	D	E
S-21L *	2480/24	614 (700-½)	2480/60	2480-1½	2480-1¾
CIRCLING **	2480-1	2680-1¼	2680-2¼	2680-2½	2940-3
	610 (700-1)	810 (900-1¼)	810 (900-2¼)	810 (900-2½)	1070(1100-3)

# TACAN RWY 21L

SW-4, 23 SEP 2010 to 21 OCT 2010

SW-4, 23 SEP 2010 to 21 OCT 2010



RWY 3L-21R  
 PCN 46 R/C/W/T  
 RWY 3R-21L  
 PCN 51 R/C/W/T  
 2017

PAR	RWY	CAT	MINIMA		ARP	ELEV	Scale 1:35'500	
	21L	A B D E	2057 - 0.8 200	(200-0.8/1.6) GS 3°	36° 14.060° N 115° 01.058° W	1857 [ft] 566 [m]	0 300 600 900 1200 1500 [m]	
	3R	A B D E	2057 - 0.8 200	(200-0.8/1.6) GS 3°			0 1000 2000 3000 4000 5000 [ft]	
SRA	21R	A C D E	2257 - 1.2 350	(350-1.2/1.6)				
	3L	A C D E	2257 - 1.2 350	(350-1.2/1.6)				

RWY	TORA	TODA	ASDA	LDA	PSN	THR	ALS
21L	10051 [ft] 3063 [m]	11051 [ft] 3368 [m]	11051 [ft] 3368 [m]	10051 [ft] 3063 [m]	36°14.043' N	115°01.018' W	⊕
3R	10120 [ft] 3084 [m]	11120 [ft] 3398 [m]	11120 [ft] 3398 [m]	10120 [ft] 3084 [m]	36°13.029' N	115°02.038' W	

ATIS	NELLIS GROUND	NELLIS TOWER	NELLIS CONTROL	TACAN	ILS RWY 21L	NELLIS EAST	NELLIS WEST
270.100 MHz	275.800   121.800	327.000   132.55	317.525	LSV 12X	109.10 Mhz	384.400	385.000