

**MISSION DATA CARD**

OPORD		Callsign		Mission		Date/Time		
3409/2024		Edelweiss 1		Training		182000NOV24		
Task	formations					Freq		
AO	dry lake					133.5		
Departure				Recovery				
HELICOPTER DEP				HELICOPTER ARR				
#	Callsign		Pilot		IFF	TCN	LSR	NET
-1	Edelweiss 1-1		Mütze		1711	1Y	1711	
-2	Edelweiss 1-2		Remotex		1712	64Y	1712	

**LOADOUT**

A/A						GUN	100% HEDP
A/G						CHF	30
POD						FLR	60
TKS						FUEL	100%

**TOLD**

	Takeoff	Target	Joker	Bingo	Land
FUEL	2513				

**AIRBASES**

	Name	TCN	ATIS	GND	TWR	RWY	Elev	ILS
Dep	Nellis AFB	12X	270.1	275.8	327.0	21L	1850	109.1
Arr	Nellis AFB	12X	270.1	275.8	327.0	21L	1850	109.1

**FLIGHTPLAN**

#	Name	Navaid/Coords/DME	ALT	TOT
1	NORTH GAP	LSV 018/5.5 (N36 20 W114 59.300)		
2	DRY LAKE	LSV 030/15 (N36 27.680 W114 52.211)		
3	Winner LZ	LSV 356/6 (N36 20.330 W115 00.250)		
4	JOLLY PAD	N36 15.067 W115 01.980		

**COMMS**

Radio	Usage
1	133.50
2	327.0

## OTHER FLIGHTS

Callsign	Mission	Airframe	Freq	TCN	Grpld	Laser
Edelweiss 6	Training	3x A-10C	134.65	1/64	40	166X
AO	R63, Groom Lake, Elgin/Caliente. AR641A	Task	LCR Check Dry Run			
Edelweiss 5	Training	4x F/A-18C	264.55	12/75	1	175X
AO	Range 64c	Task	Bomb Delivery, Gun Runs, Tac Turns, IFR T/O and Landing			
Monster 4	Training	3x A-10C	132.25	1/64	24	162X
AO	Range 63	Task	Gun Training			
Raptor 1	Training	4x F-16C	134.0	1/64		162X
AO	BVR Range Y	Task	BVR Training			

**RADIO CHANNELS**

#	Freq	Name
1		Flight/Squadron specific
2	289.4	Nellis Clearance Delivery
3	275.8	Nellis Ground
4	327.0	Nellis Tower
5	385.4	Nellis Approach/Departure West
6	273.55	Nellis Approach/Departure East
7	317.525	Nellis Control -- Sally
8	254.4	Nellis Control-- Lee
9	305.6	SOF Bullseye
10	343.725	EMERGENCY SINGLE FRQ
11	270.1	Nellis ATIS
12	360.625	Creech AFB Tower
13	250.1	HAVE QUICK 13
14	251.1	HAVE QUICK 14
15	252.1	HAVE QUICK 15
16	377.8	Blackjack
17	265.0	KC-135 AR-641A
18	360.8	KC-135MPRS AR-635
19	319.8	KC-135MPRS AR-625
20	300.05	KC-135 AR-231V

**RAMROD**

0	1	2	3	4	5	6	7	8	9
M	O	N	E	T	A	R	I	L	Y

**KTC 1400 C**

	0	1	2	3	4	5	6	7	8	9
A	GQNO	CFA	YEV	LT	DB	UHS	XW	JR	PM	IK
B	YPRH	NCF	QJK	MI	OU	ALV	TX	SW	GE	BD
C	OHLM	XJU	TSP	NI	DE	QBR	KV	FA	YG	CW
D	SKCV	OIG	UYL	PD	QM	TNE	WX	JF	BR	HA
E	TKDG	UPQ	HFB	YM	WJ	XLC	IS	NV	OE	AR
F	JNUY	QIH	LOD	XB	ME	GAK	TV	SW	FC	PR
G	YXIE	HKP	WBQ	VS	LA	NJG	MU	TR	OF	DC
H	SKCO	XRG	WVF	NQ	EU	JAD	HY	LM	IP	BT
I	BETU	INH	QML	YC	OF	WPV	JX	SG	AR	DK
J	PVYT	KBI	DFR	HC	ML	SOQ	UG	EJ	WA	XN
K	YHFV	ACW	TPO	JR	KQ	UDL	BM	SI	GN	EX
L	MLRU	SQH	BNA	KT	DW	XJP	VG	IO	YE	CF
M	ITDE	CSK	BGV	MW	ON	LHQ	AP	RU	FX	JY
N	TIED	QHO	GBW	LY	VJ	KPF	NC	AR	UX	MS
O	DUAK	OBW	SQI	TC	YF	NRH	EV	LJ	PM	GX
P	HJKW	VYL	GID	MC	NT	QAX	BE	SO	PR	UF
Q	PUGN	ILO	KCQ	BM	XS	HFY	RW	ED	AJ	TV
R	FTKL	PIS	XAY	CV	DR	QGB	HO	EU	NW	MJ
S	LUIV	PAT	EXS	HN	CD	YFK	RO	MJ	QB	GW
T	UPAC	ETV	SMR	JK	LG	IXY	HD	NW	FQ	OB
U	IRJX	PAW	VGC	LS	MO	EDB	KY	HU	TQ	FN
V	CTWV	NBI	PDE	JU	SM	OLH	YG	FK	AR	XQ
W	IDQJ	BKW	PXL	SH	FG	VEY	RT	MN	AU	CO
X	UHKO	AVT	IDE	MX	LY	CWQ	SF	GB	PN	RJ
Y	YRBM	KPJ	AIQ	HL	UW	CTV	SO	GN	EX	DF

**NAVAIDS**

<b>Id</b>	<b>Name</b>	<b>Channel</b>	<b>Position</b>	<b>Elevation</b>
BCE	Bryce Canyon	75	N3741.35 W11218.23	9040
BIH	Bishop	33	N3722.62 W11821.99	4114
BLD	Boulder	114	N3559.75 W11451.82	3650
BTY	Beatty	94	N3648.54 W11644.86	2925
CDC	Cedar City	120	N3747.24 W11304.90	5463
DAG	Daggett	79	N3457.75 W11634.69	1760
EED	Needles	99	N3445.96 W11428.43	650
GFS	Goffs	91	N3507.87 W11510.59	4019
GRL	Groom Lake	18	N3713.91 W11548.16	4475
HEC	Hector	74	N3447.83 W11627.78	1854
ILC	Wilson Creek	110	N3815.02 W11423.65	9318
INS	Creech AFB	87	N3635.20 W11540.12	3101
LAS	McCarran Intl	116	N3604.78 W11509.59	2142
LSV	Nellis	12	N3614.68 W11501.50	1864
MLF	Milford	58	N3821.62 W11300.79	4977
MMM	Mormon Mesa	90	N3646.16 W11416.65	2120
MVA	Mina	98	N3833.92 W11801.97	7860
OAL	Coale Dale	124	N3800.20 W11746.23	4800
PGS	Peach Springs	57	N3537.48 W11332.67	4754
TPH	Tonopah Muni	119	N3801.84 W11702.01	5330
TQQ	Silverbow	77	N3748.00 W11647.00	5500
UTI	St George	23	N3705.29 W11335.53	2871



RWY 3L-21R  
 PCN 46 R/C/W/T  
 RWY 3R-21L  
 PCN 51 R/C/W/T  
 2017

PAR	RWY	CAT	MINIMA	ARP	ELEV	Scale
	21L	A B D E	2057 - 0.8 200 (200-0.8/1.6) GS 3°	36° 14.060° N 115° 01.058° W	1857 [ft] 566 [m]	0 300 600 900 1200 1500 [m] 0 1000 2000 3000 4000 5000 [ft]
	3R	A B D E	2057 - 0.8 200 (200-0.8/1.6) GS 3°			
	21R	A C D E	2257 - 1.2 350 (350-1.2/1.6)			
	3L	A C D E	2257 - 1.2 350 (350-1.2/1.6)			

RWY	TORA	TODA	ASDA	LDA	PSN	THR	ALS
21L	10051 [ft] 3063 [m]	11051 [ft] 3368 [m]	11051 [ft] 3368 [m]	10051 [ft] 3063 [m]	36°14.043' N	115°01.018' W	⊕
3R	10120 [ft] 3084 [m]	11120 [ft] 3398 [m]	11120 [ft] 3398 [m]	10120 [ft] 3084 [m]	36°13.029' N	115°02.038' W	

ATIS	NELLIS GROUND	NELLIS TOWER	NELLIS CONTROL	TACAN	ILS RWY 21L	NELLIS EAST	NELLIS WEST
270.100 MHz	275.800   121.800	327.000   132.55	317.525	LSV 12X	109.10 Mhz	384.400	385.000

# HELICOPTER ARR/DEP VAD-CHART | VALID 2014

**NELLIS AFB (KLSV)**  
LAS VEGAS, NEVADA

ATIS  
270.100  
NELLIS GROUND  
275.800  
NELLIS TOWER  
327.000  
BLACKJACK  
377.800

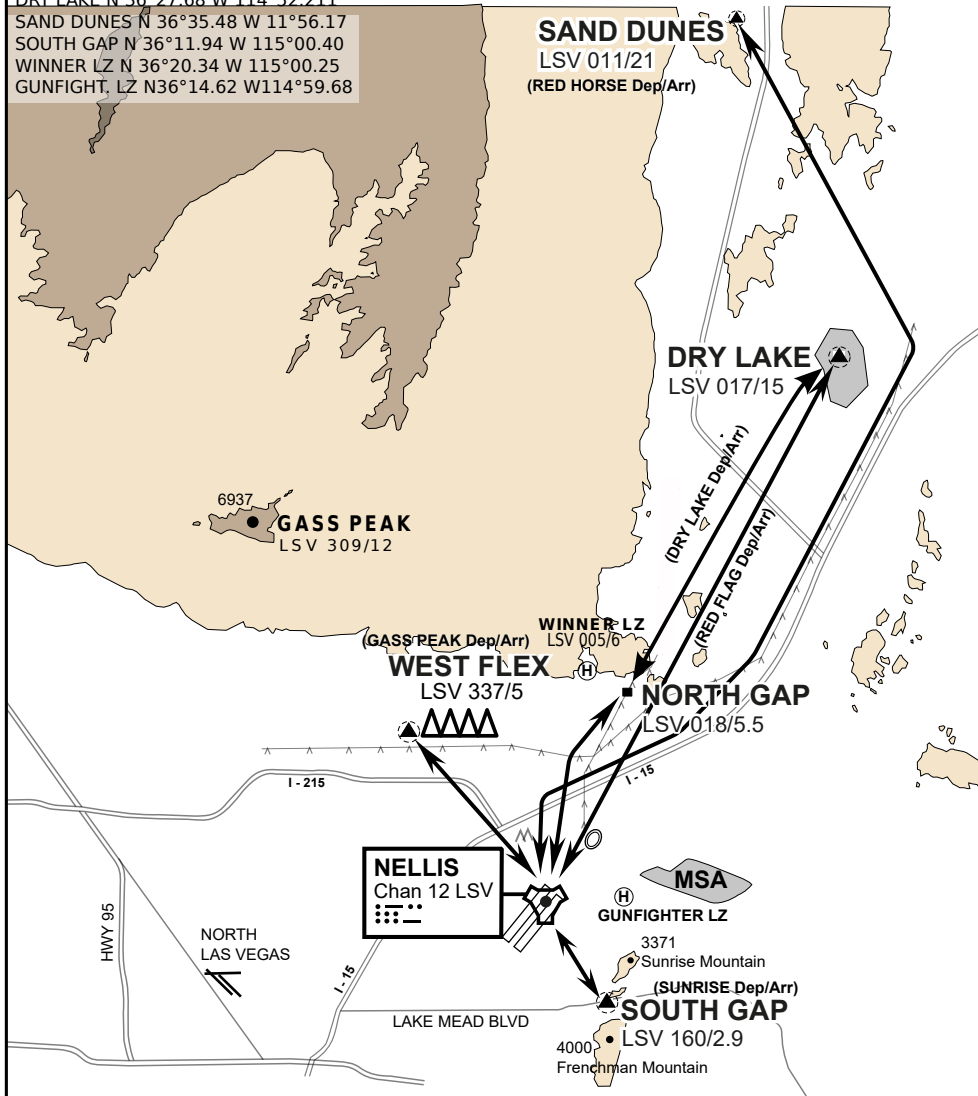
CAUTION: If unable to comply  
with restrictions advise ATC  
prior to departure.

## VMC ONLY

if below WX Minima request SVFR



JOLLY PAD N 36°15.08 W 115°01.65  
WEST FLEX N 36°18.64 W 115°08.00  
NORTH GAP N 36°20.00 W 114°59.30  
DRY LAKE N 36°27.68 W 114°52.211  
SAND DUNES N 36°35.48 W 11°56.17  
SOUTH GAP N 36°11.94 W 115°00.40  
WINNER LZ N 36°20.34 W 115°00.25  
GUNFIGHT, LZ N36°14.62 W114°59.68



vJABeG32NTRR NAV CHART

## HELICOPTER ARRIVAL AND DEPARTURES ROUTES

v.110 22APR20



# HELICOPTER ARR/DEP VAD-CHART | VALID 2014

**NELLIS AFB (KLSV)**  
LAS VEGAS, NEVADA

ATIS  
270.100  
NELLIS GROUND  
275.800  
NELLIS TOWER  
327.000  
BLACKJACK  
377.800

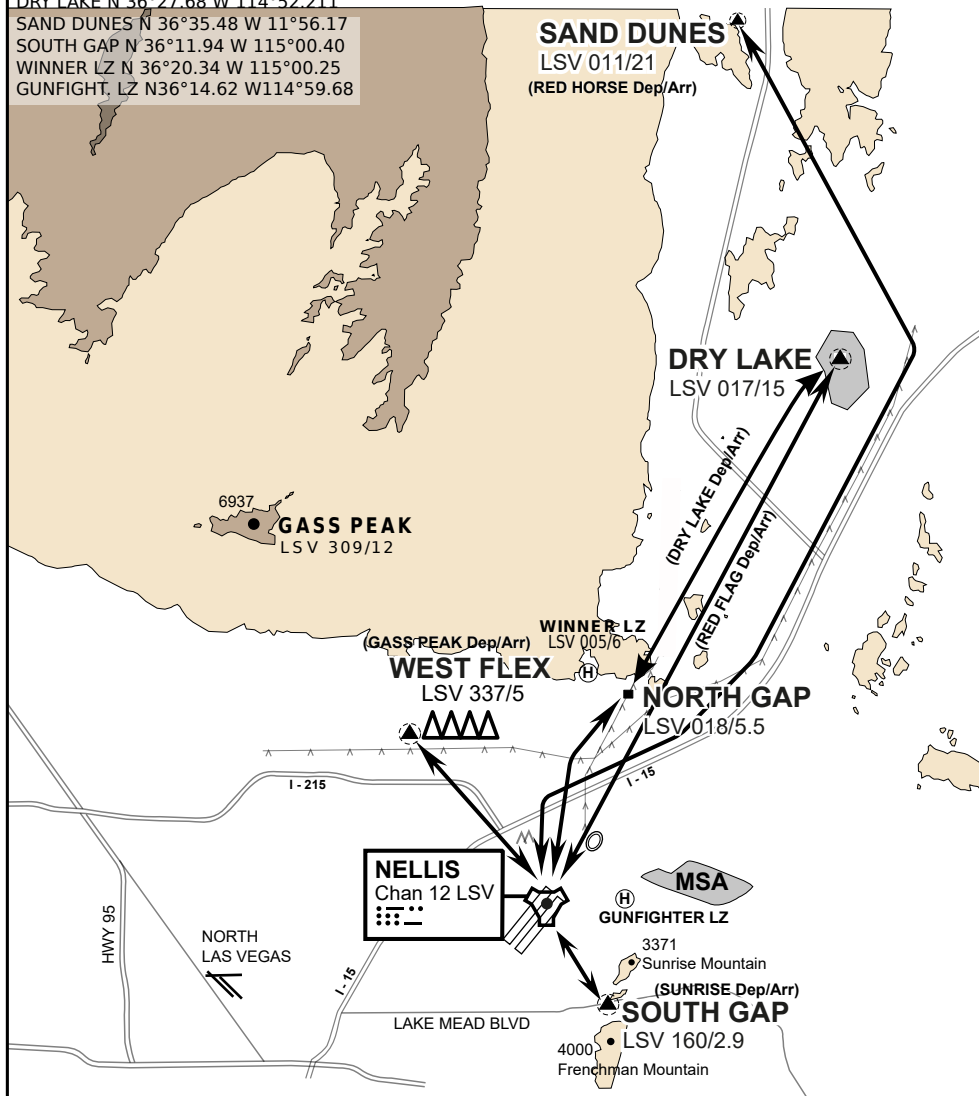
CAUTION: If unable to comply  
with restrictions advise ATC  
prior to departure.

## VMC ONLY

if below WX Minima request SVFR



JOLLY PAD N 36°15.08 W 115°01.65  
WEST FLEX N 36°18.64 W 115°08.00  
NORTH GAP N 36°20.00 W 114°59.30  
DRY LAKE N 36°27.68 W 114°52.211  
SAND DUNES N 36°35.48 W 11°56.17  
SOUTH GAP N 36°11.94 W 115°00.40  
WINNER LZ N 36°20.34 W 115°00.25  
GUNFIGHT, LZ N36°14.62 W114°59.68



## HELICOPTER ARRIVAL AND DEPARTURES ROUTES

v.110 22APR20