

MISSION DATA CARD

OPORD		Callsign	Mission	Date/Time		
3406/2024		Nazgul 6	Training	142000NOV24		
Task	CAS Training				Freq	
AO	Range 66				262.45	
Departure			Recovery			
FYTTR THREE			STRYK			
#	Callsign	Pilot	IFF	TCN	LSR	NET
-1	Nazgul 6-1	Striver/UTA	1161	1Y	1561	
-2	Nazgul 6-2	Tank	1162	64Y	1562	
-3	Nazgul 6-3	Repsus	1163	64X	1563	

LOADOUT

A/A	2xA9M, 2xA120C	GUN	100% SAPHEI
A/G	G311B, 3xG54, 2xG12	CHF	240
POD	TGT, NAV	FLR	0
TKS	FT610	FUEL	100%

TOLD

	Takeoff	Target	Joker	Bingo	Land
FUEL	26553				

AIRBASES

	Name	TCN	ATIS	GND	TWR	RWY	Elev	ILS
Dep	Nellis AFB	12X	270.1	275.8	327.0	21L	1850	109.1
Arr	Nellis AFB	12X	270.1	275.8	327.0	21L	1850	109.1

FLIGHTPLAN

#	Name	Navaid/Coords/DME	ALT	TOT
1	FYTTR	LSV 269/33 (N36 21.440 W115 41.470)	14000	
2	IP Apple	N35 34.470 W116 31.120	15000	
3	Point E	N35 34.470 W116 43.270		
4	DUDBE	N36 21.849 W115 20.581	20000	

COMMS

Radio	Usage
1	262.45
2	04 / 126.5 / 04

NOTES

JTAC Warrior 126.500

SUPPORT**Tanker**

Callsign	TCN	Freq	ALT	TAS
TEXACO 2	95Y	289.7	FL220	420
	Pos	Pegasus.1: CDC 166/102 (N3730 W11440)		

AWACS

Callsign	Freq	ALT	Pos
MAGIC	377.8	FL270	N3749 W11417 - N3713 W11446

OTHER FLIGHTS

Callsign	Mission	Airframe	Freq	TCN	Grpld	Laser
Panther 7	Training	2x F/A-18C	134.75	1/64	41	167X
AO	Blue Corridor	Task	Test Flight - (Rig Test)			
T-Rex 2	Training	3x A-10C	132.25	1/64	25	165X
AO	Container Groom Lake	Task	SAM Evasion			
Edelweiss 5	Training	4x F/A-18C	264.55	12/75	1	175X
AO		Task	Air2Air Refuel, Bomb Delivery, Gun Runs, Tac Turns R64C			
Snake 6	Training	4x AH-64D	133.5	1/64		139X
AO		Task	Formation Procedures			
Tiger 1	Training	2x F/A-18C	261.15	1/64	1	155X
AO	Range X	Task	BVR Training			

RADIO CHANNELS

#	Freq	Name
1		Flight/Squadron specific
2	289.4	Nellis Clearance Delivery
3	275.8	Nellis Ground
4	327.0	Nellis Tower
5	385.4	Nellis Approach/Departure West
6	273.55	Nellis Approach/Departure East
7	317.525	Nellis Control -- Sally
8	254.4	Nellis Control-- Lee
9	305.6	SOF Bullseye
10	343.725	EMERGENCY SINGLE FRQ
11	270.1	Nellis ATIS
12	360.625	Creech AFB Tower
13	250.1	HAVE QUICK 13
14	251.1	HAVE QUICK 14
15	252.1	HAVE QUICK 15
16	377.8	Blackjack
17	265.0	KC-135 AR-641A
18	360.8	KC-135MPRS AR-635
19	319.8	KC-135MPRS AR-625
20	300.05	KC-135 AR-231V

RAMROD

0	1	2	3	4	5	6	7	8	9
J	O	U	R	N	A	L	I	S	M

KTC 1400 C

	0	1	2	3	4	5	6	7	8	9
A	CIJE	GUR	VFP	OY	DA	QHS	TM	LN	KX	BW
B	XALH	FQS	GOY	CE	VD	TKN	IU	WP	BR	MJ
C	XKCN	DVH	LSE	BY	QP	OUT	WG	IR	JA	FM
D	XJVC	QSW	KIN	HA	UB	DPE	TO	RG	YL	MF
E	SJWA	KVP	QOH	TM	LX	NGB	RC	FD	YI	UE
F	IXUK	NJQ	MAT	FO	SR	GPL	HW	CY	DB	EV
G	RE VW	JBD	TIX	PK	CS	YHA	UN	ML	FO	GQ
H	GWJP	XIQ	KYE	BM	TF	AOH	SD	CL	UN	RV
I	UCLH	MAG	JIQ	ON	YS	BTF	ED	KX	RV	WP
J	KTVI	HYM	CAF	NE	XD	GOR	LS	UW	QP	JB
K	AHTK	UFY	LDG	ON	SE	XIB	WC	QM	JV	RP
L	HGXU	ENY	VMC	QW	IL	AJK	TR	OB	PF	SD
M	YQTH	WCS	LGN	BF	UJ	MPX	AE	RK	IO	DV
N	TEMY	JQN	OCA	DS	WG	RXL	UB	FH	IK	VP
O	VLNS	DJF	EKO	IH	RY	WPM	GU	AX	TB	QC
P	YWEG	OAC	DBN	TF	RQ	XHK	SM	LV	JI	UP
Q	GKCE	QUW	DFS	RI	XV	PYM	LJ	AT	BH	NO
R	FVDX	UEC	NSW	BK	LI	TOR	HM	GP	AY	JQ
S	RIVG	KWB	PSX	TO	JN	LMU	AE	CQ	DY	HF
T	PQHO	RTJ	BCF	SV	IE	KLA	XW	MG	UN	YD
U	UCOB	QTD	FNJ	LK	SI	EGV	WA	MH	RY	PX
V	GNYB	XTI	VKW	OM	PJ	QFU	RD	SL	AE	HC
W	HDIR	MKC	JTL	VY	GE	QUP	AN	OB	FW	SX
X	MQSE	YVJ	BOU	PN	XL	WDH	AK	FR	IG	CT
Y	GWEA	MSK	HIB	OY	XF	TJP	LQ	UC	DR	NV

NAVAIDS

Id	Name	Channel	Position	Elevation
BCE	Bryce Canyon	75	N3741.35 W11218.23	9040
BIH	Bishop	33	N3722.62 W11821.99	4114
BLD	Boulder	114	N3559.75 W11451.82	3650
BTY	Beatty	94	N3648.54 W11644.86	2925
CDC	Cedar City	120	N3747.24 W11304.90	5463
DAG	Daggett	79	N3457.75 W11634.69	1760
EED	Needles	99	N3445.96 W11428.43	650
GFS	Goffs	91	N3507.87 W11510.59	4019
GRL	Groom Lake	18	N3713.91 W11548.16	4475
HEC	Hector	74	N3447.83 W11627.78	1854
ILC	Wilson Creek	110	N3815.02 W11423.65	9318
INS	Creech AFB	87	N3635.20 W11540.12	3101
LAS	McCarran Intl	116	N3604.78 W11509.59	2142
LSV	Nellis	12	N3614.68 W11501.50	1864
MLF	Milford	58	N3821.62 W11300.79	4977
MMM	Mormon Mesa	90	N3646.16 W11416.65	2120
MVA	Mina	98	N3833.92 W11801.97	7860
OAL	Coale Dale	124	N3800.20 W11746.23	4800
PGS	Peach Springs	57	N3537.48 W11332.67	4754
TPH	Tonopah Muni	119	N3801.84 W11702.01	5330
TQQ	Silverbow	77	N3748.00 W11647.00	5500
UTI	St George	23	N3705.29 W11335.53	2871



PAR	RWY	CAT	MINIMA	ARP	ELEV	Scale
	21L	A B D E	2057 - 0.8 200 (200-0.8/1.6) GS 3°	36° 14.060° N 115° 01.058° W	1857 [ft] 566 [m]	0 300 600 900 1200 1500 [m] 0 1000 2000 3000 4000 5000 [ft]
	3R	A B D E	2057 - 0.8 200 (200-0.8/1.6) GS 3°			
	21R	A C D E	2257 - 1.2 350 (350-1.2/1.6)			
	3L	A C D E	2257 - 1.2 350 (350-1.2/1.6)			

RWY	TORA	TODA	ASDA	LDA	PSN	THR	ALS
21L	10051 [ft] 3063 [m]	11051 [ft] 3368 [m]	11051 [ft] 3368 [m]	10051 [ft] 3063 [m]	36°14.043' N	115°01.018' W	⊕
3R	10120 [ft] 3084 [m]	11120 [ft] 3398 [m]	11120 [ft] 3398 [m]	10120 [ft] 3084 [m]	36°13.029' N	115°02.038' W	

ATIS	NELLIS GROUND	NELLIS TOWER	NELLIS CONTROL	TACAN	ILS RWY 21L	NELLIS EAST	NELLIS WEST
270.100 MHz	275.800 121.800	327.000 132.55	317.525	LSV 12X	109.10 Mhz	384.400	385.000

FYTTR THREE DEPARTURE IFR CHART | VALID 2014 LAS VEGAS, NEVADA

ATIS
270.100
NELLIS GROUND
275.800
NELLIS TOWER
327.000
NELLIS CONTROL
317.525
NELLIS DEP/APP EAST
384.400
BLACKJACK
377.800



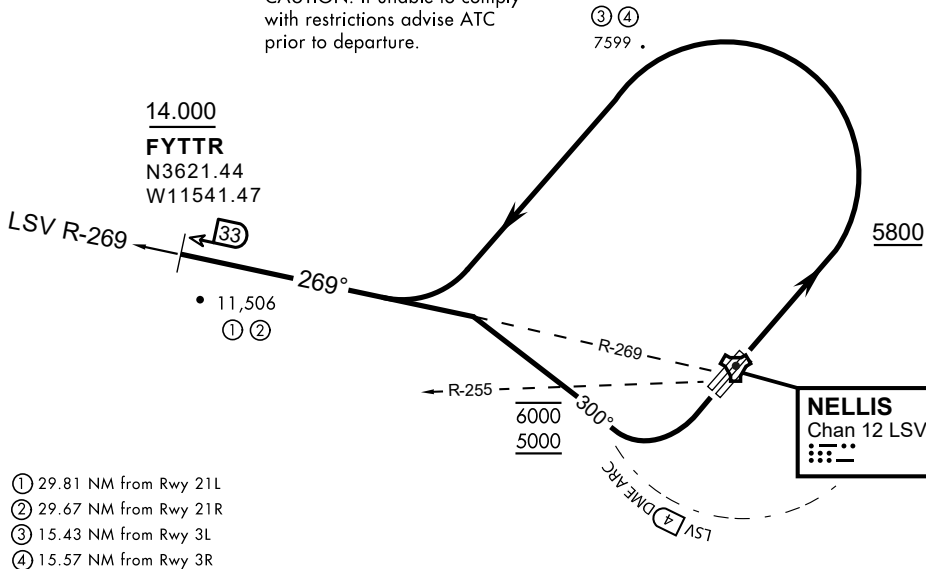
Rwy	Knots	60	120	180	240	300	360
3L (a)	V/V(fpm)	394	788	1182	1576	1970	2364
3R (a)	V/V(fpm)	392	784	1176	1568	1960	2352
21L (b)	V/V(fpm)	388	776	1164	1552	1940	2328
21R (b)	V/V(fpm)	390	780	1170	1560	1950	2340

Minimum Climb Rate

(a) to 9300

(b) to 13 500

CAUTION: If unable to comply with restrictions advise ATC prior to departure.



- ① 29.81 NM from Rwy 21L
- ② 29.67 NM from Rwy 21R
- ③ 15.43 NM from Rwy 3L
- ④ 15.57 NM from Rwy 3R

DEPARTURE ROUTE DESCRIPTION

TAKEOFF RWY 3L/R

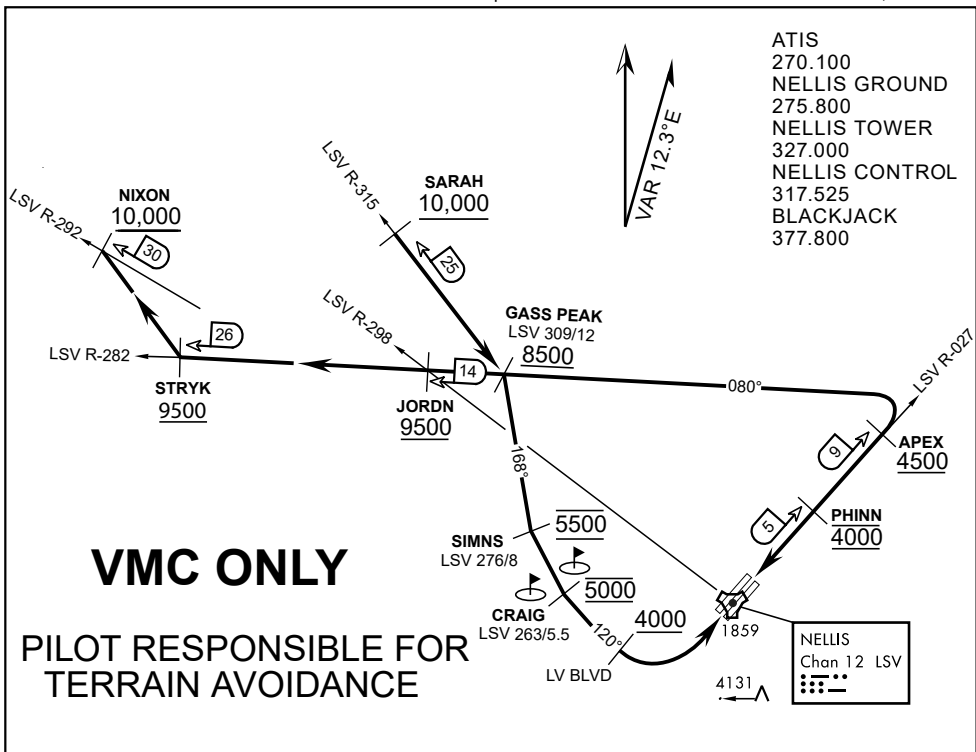
- Fly runway heading until reaching 5,800'.
- Then climbing left turn to intercept LSV TACAN R-269 outbound.
- Cross FYTTR at or above 14,000' or as assigned, then via assigned route.

TAKEOFF RWY 21L/21R

- Turn right to intercept LSV TACAN R-269 outbound.
- Remain within LSV 4 DME until joining LSV R-269
- Cross R-255 between 5,000' and 6,000'.
- Cross FYTTR at or above 14,000' or as assigned, then via assigned route.

NOISE ABATEMENT PROCEDURES:

Fly according Nellis Noise Abatement instructions as published



APPROACH ROUTE DESCRIPTION

APPROACH RWY 3L/R

Cross STRYK at or above 9,500' MSL, proceed direct GASS PEAK. Cross JORDN at or above 9,500' MSL, cross GASS PEAK at or above 8,500' MSL. Proceed direct SIMNS and cross at 5,500' MSL. Cross Las Vegas Blvd at or above 4,000' MSL then to 3,500' MSL for Initial. Remain within 4 DME if LSV on turn to final.

VFR STRAIGHT-IN RWY 3L/R

Depart CRAIG & descend to be at 3,000' MSL by Las Vegas Blvd. Do not descend below 3,000' MSL until within 5 DME of LSV or 4 NM of the runway on turn to final.

APPROACH RWY 21L/R

Cross STRYK at or above 9,500' MSL, proceed direct GASS PEAK. Cross JORDN at or above 9,500' MSL, cross GASS PEAK at or above 8,500' MSL. Cross APEX at or above 4,500' MSL then direct 5NM initial. Descend to cross PHINN at 4,000' MSL, Inside 5 NM descend to 3,500' MSL.

VFR STRAIGHT-IN RWY 21L/R

Cross APEX at 4,000' MSL. Descend to be at 3,000' MSL at PHINN. Descend to 3,000' MSL at LSV 027/5.

RANGE 63B EXIT

SOUTH: Via NIXON at or above 10,000' MSL, then direct STRYK.
EAST: Via SARAH at or above 10,000' MSL, then direct GASS PEAK.