

**MISSION DATA CARD**

OPORD		Callsign		Mission		Date/Time		
3401/2024		T-Rex 2		Training		142030NOV24		
Task	SAM Evasion					Freq		
AO	Container Groom Lake					132.25		
Departure				Recovery				
FYTTR LOW				STRYK				
#	Callsign		Pilot		IFF	TCN	LSR	NET
-1	T-Rex 2-1		Marsy		1521	1Y	1651	25/01
-2	T-Rex 2-2		addiks		1522	64Y	1652	25/02
-3	T-Rex 2-3		Stoner		1523	64X	1653	25/03

**LOADOUT**

A/A	A9M				GUN	100% CM	
A/G	7M282L				CHF	300	
POD	A184, TGP				FLR	180	
TKS					FUEL	80%	

**TOLD**

	Takeoff	Target	Joker	Bingo	Land
FUEL	8869				

**AIRBASES**

	Name	TCN	ATIS	GND	TWR	RWY	Elev	ILS
Dep	Nellis AFB	12X	270.1	275.8	327.0	21L	1850	109.1
Arr	Nellis AFB	12X	270.1	275.8	327.0	21L	1850	109.1
Div	Creech AFB	87X	290.45	275.8	360.6			

**FLIGHTPLAN**

#	Name	Navaid/Coords/DME	ALT	TOT
1	FYTTR	LSV 269/33 (N36 21.440 W115 41.470)	12000	
2	Groom Lake	INS 339/42 (N37 16.500 W115 48)	12000	
3	STRYK	LSV 282/26 (N36 25.620 W115 30.700)	10000	
4	GASS PEAK	LSV 309/12 (N36 24.140 W115 10.660)	8500	
5	APEX	LSV 027/09 (N36 21.580 W114 54.340)	4500	
6	Nellis	N36 14.680 W115 01.500		

**COMMS**

Radio	Usage
1	132.25
2	11 - 3 - 4 - 16 - 11 - 4 - 3
3	32.00

**SUPPORT****Tanker**

Callsign	TCN	Freq	ALT	TAS
TEXACO 3	22Y	300.05	15000	280
Pos	AR-231V: BTY 126/37 (N3620 W11614)			

## OTHER FLIGHTS

Callsign	Mission	Airframe	Freq	TCN	Grpld	Laser
Panther 7	Training	2x F/A-18C	134.75	1/64	41	167X
AO	Blue Corridor	Task	Test Flight - (Rig Test)			
Edelweiss 5	Training	4x F/A-18C	264.55	12/75	1	175X
AO		Task	Air2Air Refuel, Bomb Delivery, Gun Runs, Tac Turns R64C			
Snake 6	Training	4x AH-64D	133.5	1/64		139X
AO		Task	Formation Procedures			
Tiger 1	Training	2x F/A-18C	261.15	1/64	1	155X
AO	Range X	Task	BVR Training			
Nazgul 6	Training	4x F-15E	262.45	1/64		156X
AO	Range 66	Task	CAS Training			

**RADIO CHANNELS**

#	Freq	Name
1		Flight/Squadron specific
2	289.4	Nellis Clearance Delivery
3	275.8	Nellis Ground
4	327.0	Nellis Tower
5	385.4	Nellis Approach/Departure West
6	273.55	Nellis Approach/Departure East
7	317.525	Nellis Control -- Sally
8	254.4	Nellis Control-- Lee
9	305.6	SOF Bullseye
10	343.725	EMERGENCY SINGLE FRQ
11	270.1	Nellis ATIS
12	360.625	Creech AFB Tower
13	250.1	HAVE QUICK 13
14	251.1	HAVE QUICK 14
15	252.1	HAVE QUICK 15
16	377.8	Blackjack
17	265.0	KC-135 AR-641A
18	360.8	KC-135MPRS AR-635
19	319.8	KC-135MPRS AR-625
20	300.05	KC-135 AR-231V

**RAMROD**

0	1	2	3	4	5	6	7	8	9
J	O	U	R	N	A	L	I	S	M

**KTC 1400 C**

	0	1	2	3	4	5	6	7	8	9
A	CIJE	GUR	VFP	OY	DA	QHS	TM	LN	KX	BW
B	XALH	FQS	GOY	CE	VD	TKN	IU	WP	BR	MJ
C	XKCN	DVH	LSE	BY	QP	OUT	WG	IR	JA	FM
D	XJVC	QSW	KIN	HA	UB	DPE	TO	RG	YL	MF
E	SJWA	KVP	QOH	TM	LX	NGB	RC	FD	YI	UE
F	IXUK	NJQ	MAT	FO	SR	GPL	HW	CY	DB	EV
G	RE VW	JBD	TIX	PK	CS	YHA	UN	ML	FO	GQ
H	GWJP	XIQ	KYE	BM	TF	AOH	SD	CL	UN	RV
I	UCLH	MAG	JIQ	ON	YS	BTF	ED	KX	RV	WP
J	KTVI	HYM	CAF	NE	XD	GOR	LS	UW	QP	JB
K	AHTK	UFY	LDG	ON	SE	XIB	WC	QM	JV	RP
L	HGXU	ENY	VMC	QW	IL	AJK	TR	OB	PF	SD
M	YQTH	WCS	LGN	BF	UJ	MPX	AE	RK	IO	DV
N	TEMY	JQN	OCA	DS	WG	RXL	UB	FH	IK	VP
O	VLNS	DJF	EKO	IH	RY	WPM	GU	AX	TB	QC
P	YWEG	OAC	DBN	TF	RQ	XHK	SM	LV	JI	UP
Q	GKCE	QUW	DFS	RI	XV	PYM	LJ	AT	BH	NO
R	FVDX	UEC	NSW	BK	LI	TOR	HM	GP	AY	JQ
S	RIVG	KWB	PSX	TO	JN	LMU	AE	CQ	DY	HF
T	PQHO	RTJ	BCF	SV	IE	KLA	XW	MG	UN	YD
U	UCOB	QTD	FNJ	LK	SI	EGV	WA	MH	RY	PX
V	GNYB	XTI	VKW	OM	PJ	QFU	RD	SL	AE	HC
W	HDIR	MKC	JTL	VY	GE	QUP	AN	OB	FW	SX
X	MQSE	YVJ	BOU	PN	XL	WDH	AK	FR	IG	CT
Y	GWEA	MSK	HIB	OY	XF	TJP	LQ	UC	DR	NV

**NAVAIDS**

<b>Id</b>	<b>Name</b>	<b>Channel</b>	<b>Position</b>	<b>Elevation</b>
BCE	Bryce Canyon	75	N3741.35 W11218.23	9040
BIH	Bishop	33	N3722.62 W11821.99	4114
BLD	Boulder	114	N3559.75 W11451.82	3650
BTY	Beatty	94	N3648.54 W11644.86	2925
CDC	Cedar City	120	N3747.24 W11304.90	5463
DAG	Daggett	79	N3457.75 W11634.69	1760
EED	Needles	99	N3445.96 W11428.43	650
GFS	Goffs	91	N3507.87 W11510.59	4019
GRL	Groom Lake	18	N3713.91 W11548.16	4475
HEC	Hector	74	N3447.83 W11627.78	1854
ILC	Wilson Creek	110	N3815.02 W11423.65	9318
INS	Creech AFB	87	N3635.20 W11540.12	3101
LAS	McCarran Intl	116	N3604.78 W11509.59	2142
LSV	Nellis	12	N3614.68 W11501.50	1864
MLF	Milford	58	N3821.62 W11300.79	4977
MMM	Mormon Mesa	90	N3646.16 W11416.65	2120
MVA	Mina	98	N3833.92 W11801.97	7860
OAL	Coale Dale	124	N3800.20 W11746.23	4800
PGS	Peach Springs	57	N3537.48 W11332.67	4754
TPH	Tonopah Muni	119	N3801.84 W11702.01	5330
TQQ	Silverbow	77	N3748.00 W11647.00	5500
UTI	St George	23	N3705.29 W11335.53	2871



RWY 3L-21R  
 PCN 46 R/C/W/T  
 RWY 3R-21L  
 PCN 51 R/C/W/T  
 2017

PAR	RWY	CAT	MINIMA	ARP	ELEV	Scale
	21L	A B D E	2057 - 0.8 200 (200-0.8/1.6) GS 3°	36° 14.060° N 115° 01.058° W	1857 [ft] 566 [m]	0 300 600 900 1200 1500 [m] 0 1000 2000 3000 4000 5000 [ft]
	3R	A B D E	2057 - 0.8 200 (200-0.8/1.6) GS 3°			
	21R	A C D E	2257 - 1.2 350 (350-1.2/1.6)			
	3L	A C D E	2257 - 1.2 350 (350-1.2/1.6)			

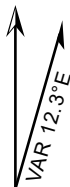
RWY	TORA	TODA	ASDA	LDA	PSN	THR	ALS
21L	10051 [ft] 3063 [m]	11051 [ft] 3368 [m]	11051 [ft] 3368 [m]	10051 [ft] 3063 [m]	36°14.043' N	115°01.018' W	⊕
3R	10120 [ft] 3084 [m]	11120 [ft] 3398 [m]	11120 [ft] 3398 [m]	10120 [ft] 3084 [m]	36°13.029' N	115°02.038' W	

ATIS	NELLIS GROUND	NELLIS TOWER	NELLIS CONTROL	TACAN	ILS RWY 21L	NELLIS EAST	NELLIS WEST
270.100 MHz	275.800   121.800	327.000   132.55	317.525	LSV 12X	109.10 Mhz	384.400	385.000



ATIS  
270.100  
NELLIS GROUND  
275.800  
NELLIS TOWER  
327.000  
NELLIS CONTROL  
317.525  
NELLIS DEP/APP EAST  
384.400  
BLACKJACK  
377.800

CAUTION: If unable to comply  
with restrictions advise ATC  
prior to departure.



# VMC ONLY

## PILOT RESPONSIBLE FOR TERRAIN AVOIDANCE

① 4 NM from RWY 3L/R

**BEATTY**  
Chan 94 BTY

RANGE 64/65  
RANGE 63

TUCKY

R-2508

LSV R-269

**FYTTR**  
N3621.44  
W11541.47

BTY R-105

DME 15 ARC  
5000

7233  
**FLEX**  
LSV 337/5

2086 M

① 3000

**NELLIS**  
Chan 12 LSV

←R-255  
6000  
5000

4131



### DEPARTURE ROUTE DESCRIPTION

#### TAKEOFF RWY 3L/R:

- Remain below 3,000' MSL until north of Race Track and turned westbound.
- Turn left within 4NM of Nellis direct FLEX. Fly north of FLEX and turn left heading 270°.
- Intercept LSV 15 DME ARC at or below 5,000' MSL.
- ARC south, intercept LSV R-269 outbound. Maintain VFR.

#### TAKEOFF RWY 21L/21R:

- Follow Noise Abatement Procedures.
- Fly runway heading until past Golf Course, turn right heading 300°.
- Cross LSV R-255 between 5,000' and 6,000' , intercept and proceed outbound on the LSV R-269.Recommend climb to 8,500' MSL or appropriate VFR altitude for overflight of North Las Vegas Training Area. Fly routing for appr. mission/transition.

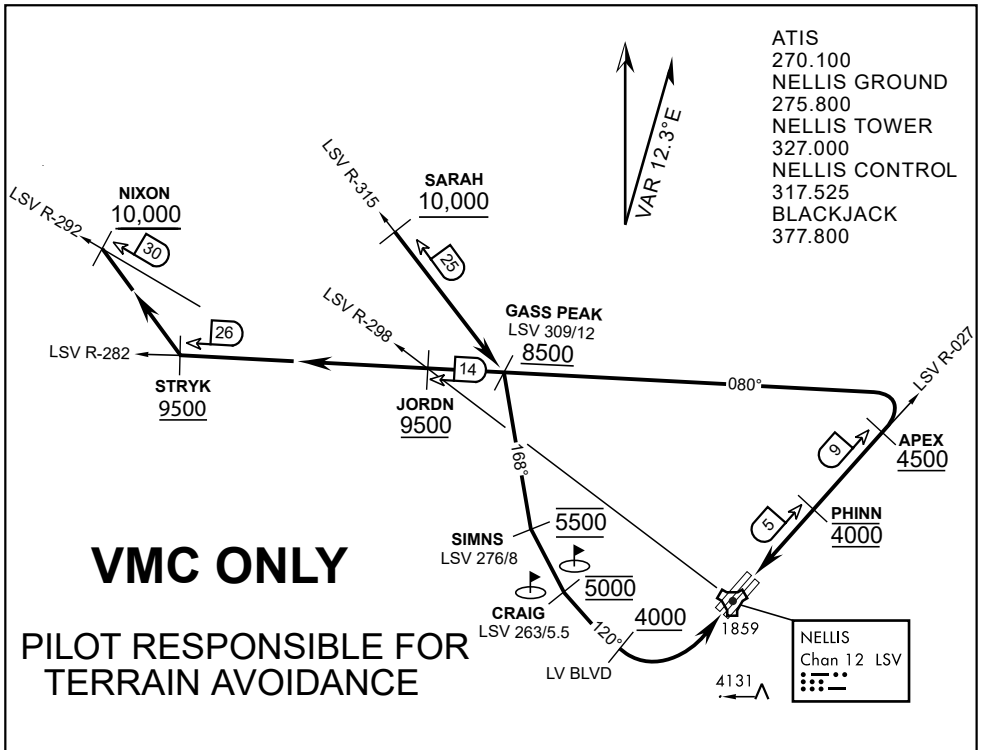
#### TRANSITIONS:

**R-4806:** Turn right at the LSV 269/20 direct to assigned ranges.

**BEATTY:** Turn right at FYTTR direct BTY via the BTY R-105

**R-2508:** Turn right at the FYTTR, intercept the BTY 105/30, direct TUCKY, then direct R-2508

## FYTTR DEPARTURE AND TRANSITIONS (FYTTR LOW)



**APPROACH ROUTE DESCRIPTION**

**APPROACH RWY 3L/R**

Cross STRYK at or above 9,500' MSL, proceed direct GASS PEAK. Cross JORDN at or above 9,500' MSL, cross GASS PEAK at or above 8,500' MSL. Proceed direct SIMNS and cross at 5,500' MSL. Cross Las Vegas Blvd at or above 4,000' MSL then to 3,500' MSL for Initial. Remain within 4 DME if LSV on turn to final.

**VFR STRAIGHT-IN RWY 3L/R**

Depart CRAIG & descend to be at 3,000' MSL by Las Vegas Blvd. Do not descend below 3,000' MSL until within 5 DME of LSV or 4 NM of the runway on turn to final.

**APPROACH RWY 21L/R**

Cross STRYK at or above 9,500' MSL, proceed direct GASS PEAK. Cross JORDN at or above 9,500' MSL, cross GASS PEAK at or above 8,500' MSL. Cross APEX at or above 4,500' MSL then direct 5NM initial. Descend to cross PHINN at 4,000' MSL, Inside 5 NM descend to 3,500' MSL.

**VFR STRAIGHT-IN RWY 21L/R**

Cross APEX at 4,000' MSL. Descend to be at 3,000' MSL at PHINN. Descend to 3,000' MSL at LSV 027/5.

**RANGE 63B EXIT**

**SOUTH:** Via NIXON at or above 10,000' MSL, then direct STRYK.

**EAST:** Via SARAH at or above 10,000' MSL, then direct GASS PEAK.



INDIAN SPRINGS, NEVADA

TACAN INS Chan 87	APCH CRS 065°	Rwy ldg TDZE 3133	9002 3133
		Arpt Elev 3113	

INDIAN SPRINGS AF AUX (KINS)

**▼** \* MISSED APPROACH: Straight ahead to INS TACAN, intercept INS R-outbound, cross 17 DME at or above 9500, then direkt KSV TACAN 114

NELLIS CON

CREECH AFB TOWER  
118.30 60.60

GND CON

**NOT FOR CIVIL USE**

FOR USE UNDER BASIC VFR  
WEATHER MINIMUMS ONLY

PILOT IS RESPONSIBLE FOR TERRAIN/OBSTACLE AVOIDANCE AND APPROPRIATE VFR CLOUD CLEARANCE FOR ALL

**CAUTION:** Descent gradients are greater than allowed under standard TERPS criteria and inbound course does not meet straight-in criteria

**CAUTION:** Final approach course crosses Runway centerline at MIDFIELD. Maneuvering left of course required prior to landing. Do not Maneuver farther north than the INS R- 258

Modified by viaBog 66 for use with DCS  
NOT FOR REAL LIFE NAVIGATION

Modified by viaBog 66 for use with DCS  
NOT FOR REAL LIFE NAVIGATION



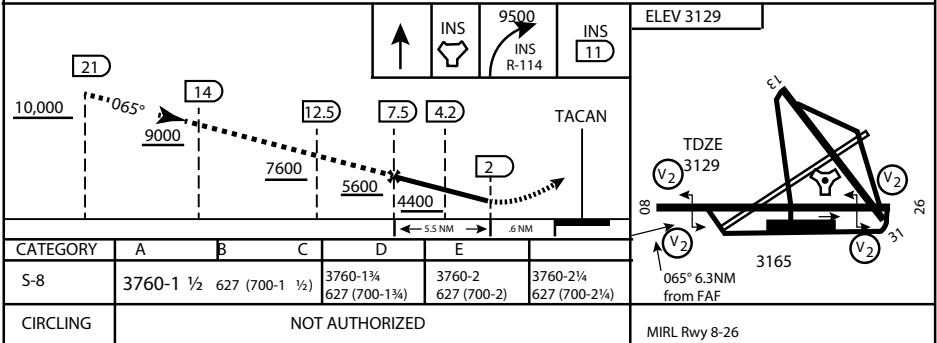
\* CAUTION: Missed Approach Climb Rate to 4,700

Knots	60	120	180	240	300
V/V (fpm)	230	460	690	920	1150

Controlling Obstacle

HIGH ALTITUDE FACILITIES

EMERG SAFE ALT 100 NM 14,000



CITY OF INDIAN, NEVADA

INDIAN SPRINGS AF AUX (KINS)

(FOR DAY VFR USE ONLY)



# AIRPORT DIAGRAM

476 VFG

CREECH AFB (KINS)  
INDIAN SPRINGS, NEVADA

ATIS  
 122.5  
 CREECH TOWER  
 118.4 360.7 38.65  
 GND CON  
 118.3 275.8  
 CLNC DEL

115°42'W

FIELD  
 ELEV  
 3127

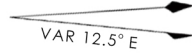
80

972 X 150

HOT CARGO PAD

78.9°

BAK-12



WEST EOR

115°41'W

476 VFG JAN 2019

476 VFG JAN 2019

CONTROL TOWER  
 BASE OPS

RPA LOLA WEST

RPA LOLA EAST

LOLA / HUNG ORDNANCE

199 X 100  
 ELEV 3127  
 RUNWAY 31/13  
 MQ/RQ-1 ONLY

258.5°

860 X 100

313.8°

4064 X 100

115°40'W

BAK-12

ELEV 3127

EAST EOR

1030 X 150

26

# AIRPORT DIAGRAM

INDIAN SPRINGS, NEVADA  
CREECH AFB (KINS)