

**MISSION DATA CARD**

OPORD		Callsign		Mission		Date/Time		
3398/2024		Edelweiss 6		Training		112000NOV24		
Task	AAR					Freq		
AO						134.65		
Departure				Recovery				
FYTTR LOW				STRYK				
#	Callsign		Pilot		IFF	TCN	LSR	NET
-1	Edelweiss 6-1		Stoner		1761	1Y	1661	40/01
-2	Edelweiss 6-2		Lenzi		1762	64Y	1662	40/02

**LOADOUT**

A/A	A9L				GUN	100% CM	
A/G	7M282L				CHF	240	
POD	TGP, A184L				FLR	240	
TKS					FUEL	50%	

**TOLD**

	Takeoff	Target	Joker	Bingo	Land
FUEL	5543				

**AIRBASES**

	Name	TCN	ATIS	GND	TWR	RWY	Elev	ILS
Dep	Nellis AFB	12X	270.1	275.8	327.0	21L	1850	109.1
Arr	Nellis AFB	12X	270.1	275.8	327.0	21L	1850	109.1
Div	Creech AFB	87X	290.45	275.8	360.6			

**FLIGHTPLAN**

#	Name	Navaid/Coords/DME	ALT	TOT
1	FLEX	LSV 337/5 (N36 18.620 W115 02.360)	3000	
2	FYTTR	LSV 269/33 (N36 21.440 W115 41.470)	12000	
3	STRYK	LSV 282/26 (N36 25.620 W115 30.700)	10000	
4	GASS PEAK	LSV 309/12 (N36 24.140 W115 10.660)	8500	
5	SIMNS	LSV 276/8 (N36 17.340 W115 10.750)	5500	
6	CRAIG	LSV 263/5.5 (N36 15.250 W115 08.270)	5000	
7	APEX	LSV 027/09 (N36 21.580 W114 54.340)	4500	
8	PHINN	N36 18.427 W114 57.408	4000	
9	Nellis	N36 14.680 W115 01.500		

**SUPPORT****Tanker**

Callsign	TCN	Freq	ALT	TAS
TEXACO 1	94Y	265.0	17000	290
	Pos	AR-641A: CDC 242/78 (N3728 W11439)		
TEXACO 3	22Y	300.05	15000	280
	Pos	AR-231V: BTY 126/37 (N3620 W11614)		

## OTHER FLIGHTS

Callsign	Mission	Airframe	Freq	TCN	Grpld	Laser
Snake 6	Training	4x AH-64D	133.5	1/64		139X
AO		Task	Formation Procedures			
Nazgul 6	Training	4x F-15E	262.45	1/64		156X
AO	Range 66	Task	CAS Training			
Warrior	Training	2x Ground	126.5	1/64		170X
AO		Task	JTAC R66			
Edelweiss 1	Training	4x F/A-18C	264.15	12/75	1	171X
AO		Task	Formation, Tac-Turns, AAR, Bomb Delivery			
Edelweiss 2	Training	2x F-16C	134.25	1/64		172X
AO	Range 61	Task	Gun Pattern Training			
Raptor 1	Training	4x F-16C	134.0	1/64		162X
AO	BVR Range Y	Task	BVR Training			
Tiger 5	Training	2x F/A-18C	261.15	1/64		155X
AO	BVR X	Task	BVR X			

**RADIO CHANNELS**

#	Freq	Name
1		Flight/Squadron specific
2	289.4	Nellis Clearance Delivery
3	275.8	Nellis Ground
4	327.0	Nellis Tower
5	385.4	Nellis Approach/Departure West
6	273.55	Nellis Approach/Departure East
7	317.525	Nellis Control -- Sally
8	254.4	Nellis Control-- Lee
9	305.6	SOF Bullseye
10	343.725	EMERGENCY SINGLE FRQ
11	270.1	Nellis ATIS
12	360.625	Creech AFB Tower
13	250.1	HAVE QUICK 13
14	251.1	HAVE QUICK 14
15	252.1	HAVE QUICK 15
16	377.8	Blackjack
17	265.0	KC-135 AR-641A
18	360.8	KC-135MPRS AR-635
19	319.8	KC-135MPRS AR-625
20	300.05	KC-135 AR-231V

**RAMROD**

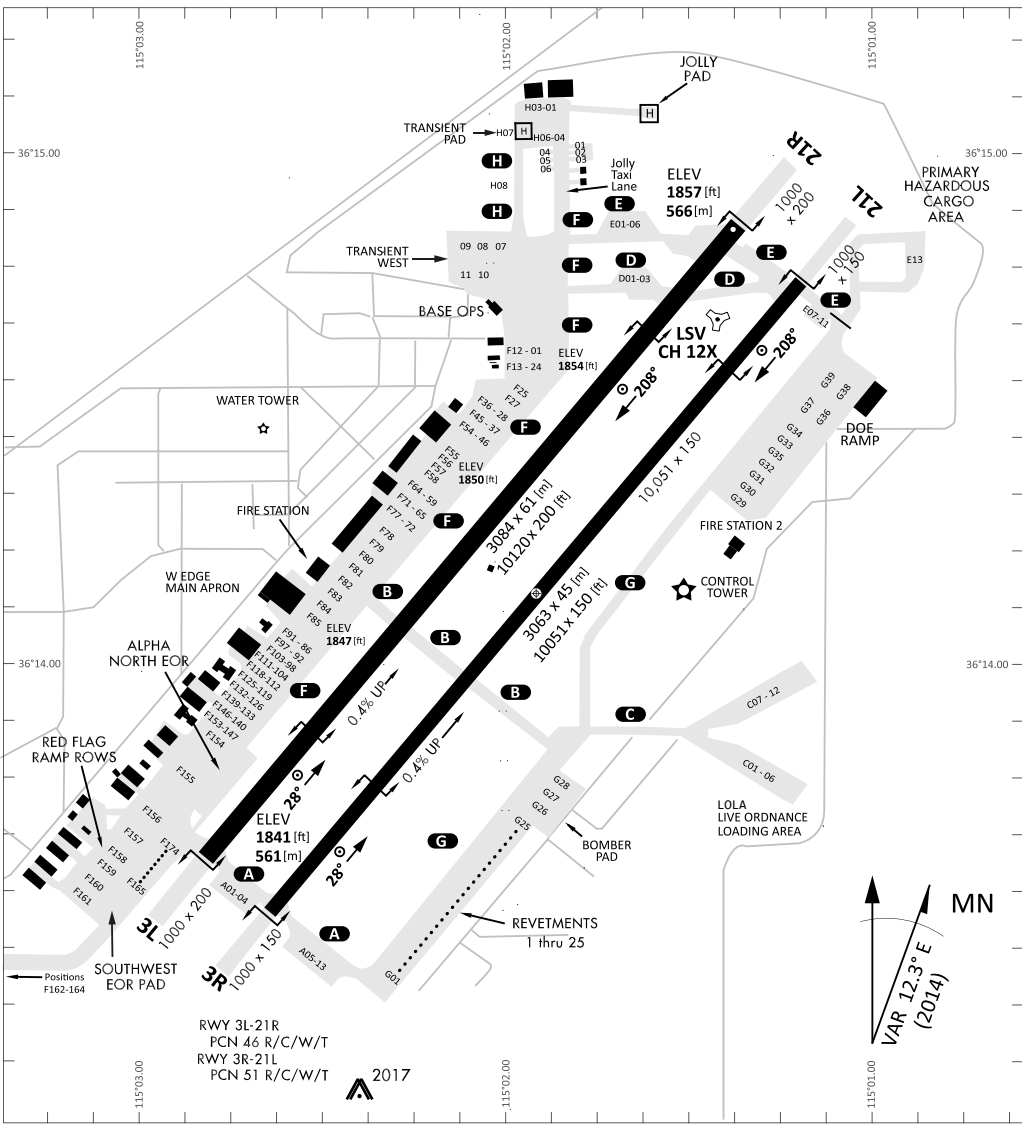
0	1	2	3	4	5	6	7	8	9
M	O	D	U	L	A	T	I	N	G

**KTC 1400 C**

	0	1	2	3	4	5	6	7	8	9
A	CJOI	XEF	TWK	NB	LV	PQY	MS	UA	DR	GH
B	KTWA	YIE	CGM	DP	LN	RHQ	SU	XV	FO	BJ
C	HBFK	ROS	WJP	NV	MT	XIC	UG	YE	QL	DA
D	ECAJ	LXN	VYU	GF	SM	OBK	QT	WR	DI	HP
E	MTNH	GWP	YOI	BR	QV	JKD	XE	SL	AF	UC
F	QKOX	TAR	PBI	EV	YC	DMU	HL	FW	SG	NJ
G	RVLG	TPX	MCS	HY	DA	UBO	KI	FJ	NW	QE
H	EXGU	TLC	DKN	AW	VI	FMY	RJ	OH	SB	QP
I	MRTH	BLG	YSA	FI	WO	DUX	QJ	CN	VK	EP
J	NOUS	KCX	LAI	PJ	BY	WHM	FQ	GV	TR	ED
K	JKCV	TUI	FNH	LB	WG	DPY	QS	ME	OR	XA
L	THQG	WND	BSE	IX	OC	VAJ	FU	RM	PL	KY
M	WCEQ	PIA	TRV	LB	HS	XJN	GK	MY	UD	OF
N	WXUK	JLR	GCH	AT	DQ	PNB	VI	OY	SM	EF
O	OXGQ	MJL	FPU	ST	CV	RWH	DY	NK	BE	IA
P	GQSE	JAL	VHW	NY	OP	BFT	KM	RD	CI	XU
Q	PNBC	WMV	UFE	KD	TI	XYL	AS	RO	QH	JG
R	JDLK	XAI	PYO	CG	QV	SMF	HU	BT	NR	WE
S	FBOI	UEM	WVN	XQ	DL	RAY	GT	CP	HS	JK
T	AJDW	VLR	IPQ	SM	YK	CXH	TG	NB	EU	OF
U	SADC	WMN	PYB	LX	IE	HOF	GU	QR	TJ	KV
V	MIYS	EVK	NJL	HD	WO	PAG	QT	UX	BC	FR
W	RLUQ	IWY	BDO	SN	PK	TJM	GA	VC	XE	FH
X	RYUJ	GXI	FLB	AM	PV	KNH	EC	SD	TQ	OW
Y	UWBX	EHT	LMS	YK	OA	JFG	PQ	NR	CD	VI

**NAVAIDS**

<b>Id</b>	<b>Name</b>	<b>Channel</b>	<b>Position</b>	<b>Elevation</b>
BCE	Bryce Canyon	75	N3741.35 W11218.23	9040
BIH	Bishop	33	N3722.62 W11821.99	4114
BLD	Boulder	114	N3559.75 W11451.82	3650
BTY	Beatty	94	N3648.54 W11644.86	2925
CDC	Cedar City	120	N3747.24 W11304.90	5463
DAG	Daggett	79	N3457.75 W11634.69	1760
EED	Needles	99	N3445.96 W11428.43	650
GFS	Goffs	91	N3507.87 W11510.59	4019
GRL	Groom Lake	18	N3713.91 W11548.16	4475
HEC	Hector	74	N3447.83 W11627.78	1854
ILC	Wilson Creek	110	N3815.02 W11423.65	9318
INS	Creech AFB	87	N3635.20 W11540.12	3101
LAS	McCarran Intl	116	N3604.78 W11509.59	2142
LSV	Nellis	12	N3614.68 W11501.50	1864
MLF	Milford	58	N3821.62 W11300.79	4977
MMM	Mormon Mesa	90	N3646.16 W11416.65	2120
MVA	Mina	98	N3833.92 W11801.97	7860
OAL	Coale Dale	124	N3800.20 W11746.23	4800
PGS	Peach Springs	57	N3537.48 W11332.67	4754
TPH	Tonopah Muni	119	N3801.84 W11702.01	5330
TQQ	Silverbow	77	N3748.00 W11647.00	5500
UTI	St George	23	N3705.29 W11335.53	2871



RWY 3L-21R  
 PCN 46 R/C/W/T  
 RWY 3R-21L  
 PCN 51 R/C/W/T  
 2017

PAR	RWY	CAT	MINIMA		ARP	ELEV	Scale 1:35'500	
	21L	A B D E	2057 - 0.8 200	(200-0.8/1.6) GS 3°	36° 14.060° N 115° 01.058° W	1857 [ft] 566 [m]	0	300
	3R	A B D E	2057 - 0.8 200	(200-0.8/1.6) GS 3°			600	900
SRA	21R	A C D E	2257 - 1.2 350	(350-1.2/1.6)			1200	1500 [m]
	3L	A C D E	2257 - 1.2 350	(350-1.2/1.6)			0	1000
							2000	3000
							4000	5000 [ft]

RWY	TORA	TODA	ASDA	LDA	PSN	THR	ALS
21L	10051 [ft] 3063 [m]	11051 [ft] 3368 [m]	11051 [ft] 3368 [m]	10051 [ft] 3063 [m]	36°14.043' N	115°01.018' W	⊕
3R	10120 [ft] 3084 [m]	11120 [ft] 3398 [m]	11120 [ft] 3398 [m]	10120 [ft] 3084 [m]	36°13.029' N	115°02.038' W	

ATIS	NELLIS GROUND	NELLIS TOWER	NELLIS CONTROL	TACAN	ILS RWY 21L	NELLIS EAST	NELLIS WEST
270.100 MHz	275.800   121.800	327.000   132.55	317.525	LSV 12X	109.10 Mhz	384.400	385.000



# FYTTR LOW VISUAL OPERATION CHART | VALID 2014

ATIS  
270.100  
NELLIS GROUND  
275.800  
NELLIS TOWER  
327.000  
NELLIS CONTROL  
317.525  
NELLIS DEP/APP EAST  
384.400  
BLACKJACK  
377.800

CAUTION: If unable to comply with restrictions advise ATC prior to departure.



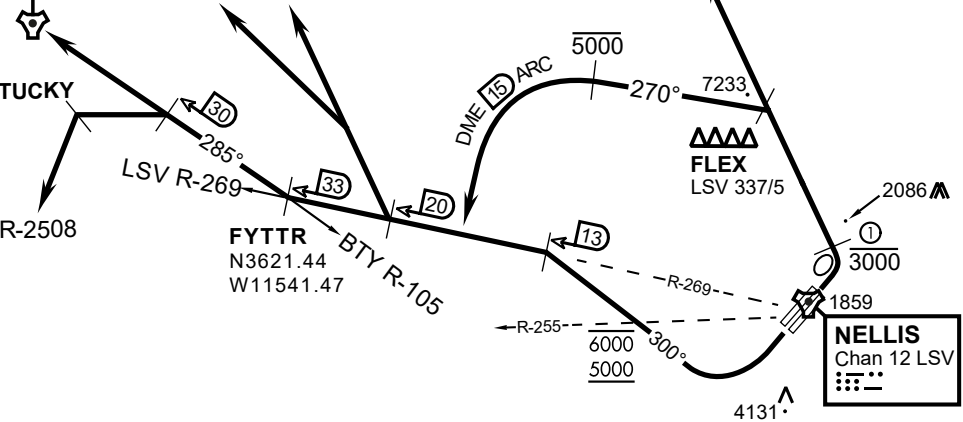
## VMC ONLY

### PILOT RESPONSIBLE FOR TERRAIN AVOIDANCE

① 4 NM from RWY 3L/R

**BEATTY**  
Chan 94 BTY

RANGE 64/65  
RANGE 63



### DEPARTURE ROUTE DESCRIPTION

#### TAKEOFF RWY 3L/R:

- Remain below 3,000' MSL until north of Race Track and turned westbound.
- Turn left within 4NM of Nellis direct FLEX. Fly north of FLEX and turn left heading 270°.
- Intercept LSV 15 DME ARC at or below 5,000' MSL.
- ARC south, intercept LSV R-269 outbound. Maintain VFR.

#### TAKEOFF RWY 21L/21R:

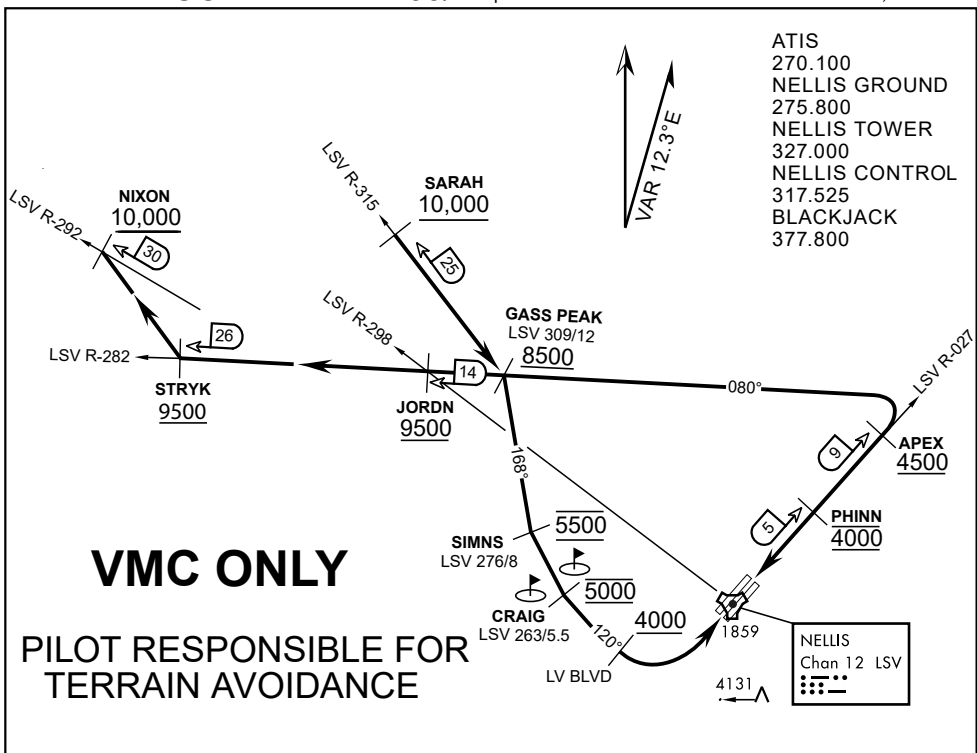
- Follow Noise Abatement Procedures.
- Fly runway heading until past Golf Course, turn right heading 300°.
- Cross LSV R-255 between 5,000' and 6,000' , intercept and proceed outbound on the LSV R-269.Recommend climb to 8,500' MSL or appropriate VFR altitude for overflight of North Las Vegas Training Area. Fly routing for appr. mission/transition.

#### TRANSITIONS:

- R-4806:** Turn right at the LSV 269/20 direct to assigned ranges.
- BEATTY:** Turn right at FYTTR direct BTY via the BTY R-105
- R-2508:** Turn right at the FYTTR, intercept the BTY 105/30, direct TUCKY, then direct R-2508

## FYTTR DEPARTURE AND TRANSITIONS (FYTTR LOW)

v.15 13NOV20 NTR NAV CHART



**VMC ONLY**  
**PILOT RESPONSIBLE FOR TERRAIN AVOIDANCE**

**APPROACH ROUTE DESCRIPTION**

**APPROACH RWY 3L/R**

Cross STRYK at or above 9,500' MSL, proceed direct GASS PEAK. Cross JORDN at or above 9,500' MSL, cross GASS PEAK at or above 8,500' MSL. Proceed direct SIMNS and cross at 5,500' MSL. Cross Las Vegas Blvd at or above 4,000' MSL then to 3,500' MSL for Initial. Remain within 4 DME if LSV on turn to final.

**VFR STRAIGHT-IN RWY 3L/R**

Depart CRAIG & descend to be at 3,000' MSL by Las Vegas Blvd. Do not descend below 3,000' MSL until within 5 DME of LSV or 4 NM of the runway on turn to final.

**APPROACH RWY 21L/R**

Cross STRYK at or above 9,500' MSL, proceed direct GASS PEAK. Cross JORDN at or above 9,500' MSL, cross GASS PEAK at or above 8,500' MSL. Cross APEX at or above 4,500' MSL then direct 5NM initial. Descend to cross PHINN at 4,000' MSL, Inside 5 NM descend to 3,500' MSL.

**VFR STRAIGHT-IN RWY 21L/R**

Cross APEX at 4,000' MSL. Descend to be at 3,000' MSL at PHINN. Descend to 3,000' MSL at LSV 027/5.

**RANGE 63B EXIT**

**SOUTH:** Via NIXON at or above 10,000' MSL, then direct STRYK.  
**EAST:** Via SARAH at or above 10,000' MSL, then direct GASS PEAK.



INDIAN SPRINGS, NEVADA

TACAN INS Chan 87	APCH CRS 065°	Rwy ldg TDZE 3133	9002 3113
		Arpt Elev 3113	

INDIAN SPRINGS AF AUX (KINS)

**NOT FOR CIVIL USE**

\* MISSED APPROACH: Straight ahead to INS TACAN, intercept INS R-outbound, cross 17 DME at or above 9500, then direkt KSV TACAN

114

NELLIS CON

CREECH AFB TOWER  
118.30 60.60

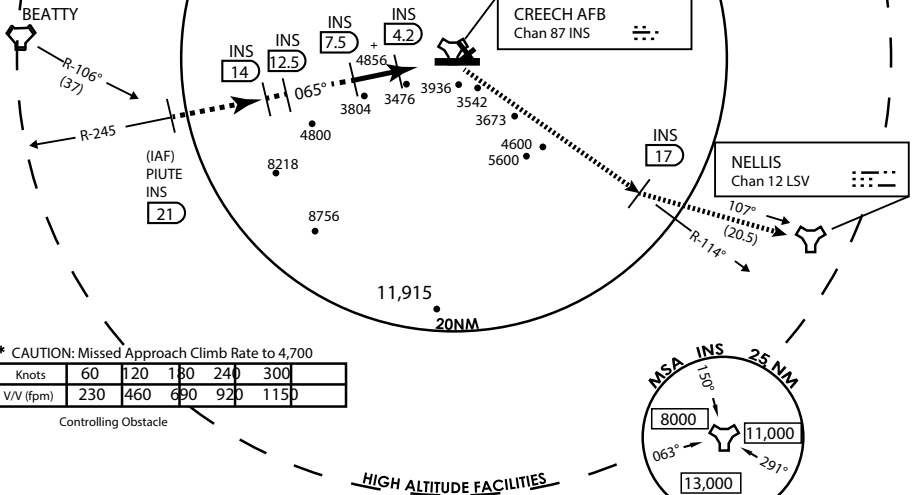
GND CON

FOR USE UNDER BASIC VFR WEATHER MINIMUMS ONLY

**CAUTION:** Descent gradients are greater than allowed under standard TERPS criteria and inbound course does not meet straight-in criteria

**CAUTION:** Final approach course crosses Runway centerline at MIDFIELD. Maneuvering left of course required prior to landing. Do not Maneuver farther north than the INS R- 258

PILOT IS RESPONSIBLE FOR TERRAIN/OBSTACLE AVOIDANCE AND APPROPRIATE VFR CLOUD CLEARANCE FOR ALL



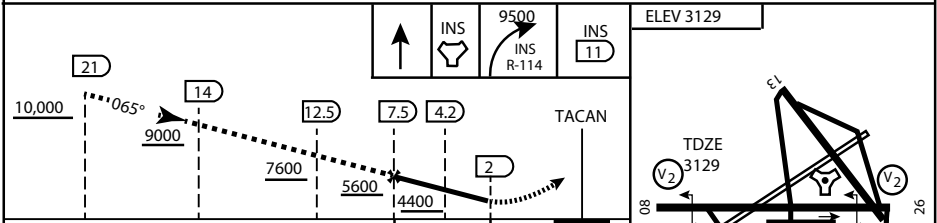
\* CAUTION: Missed Approach Climb Rate to 4,700

Knots	60	120	180	240	300
V/V (fpm)	230	460	690	920	1150

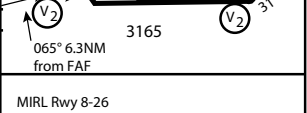
Controlling Obstacle

HIGH ALTITUDE FACILITIES

EMERG SAFE ALT 100 NM 14,000



CATEGORY	A	B	C	D	E
S-8	3760-1 ½	627 (700-1 ½)	3760-1¾ 627 (700-1¾)	3760-2 627 (700-2)	3760-2¼ 627 (700-2¼)
CIRCLING	NOT AUTHORIZED				



CITY OF INDIAN, NEVADA

INDIAN SPRINGS AF AUX (KINS)

(FOR DAY VFR USE ONLY)

Modified by vJaBoG 66 for use with DCS  
NOT FOR REAL LIFE NAVIGATION

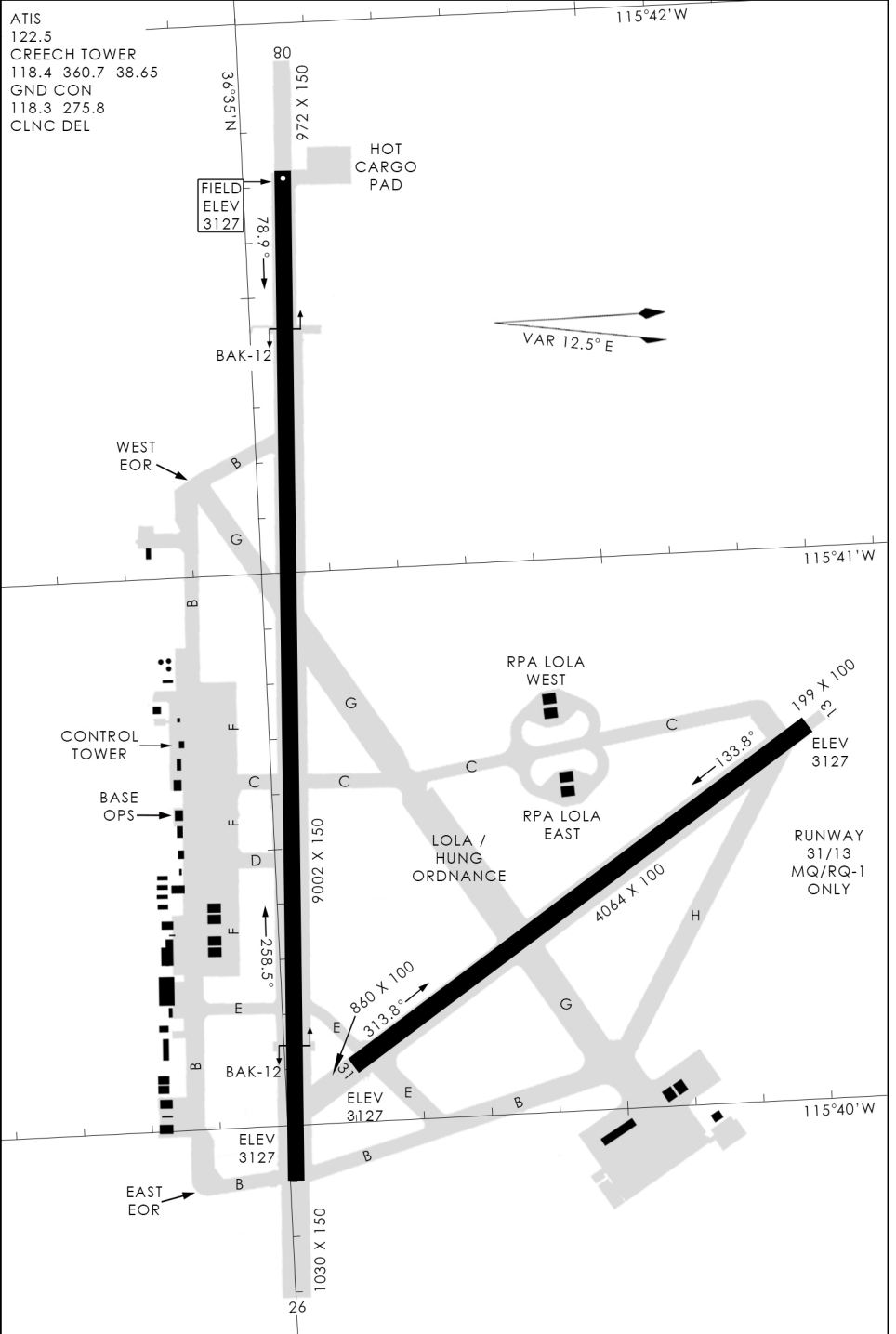
Modified by vJaBoG 66 for use with DCS  
NOT FOR REAL LIFE NAVIGATION



# AIRPORT DIAGRAM

476 VFG

CREECH AFB (KINS)  
INDIAN SPRINGS, NEVADA



476 VFG JAN 2019

476 VFG JAN 2019

# AIRPORT DIAGRAM

INDIAN SPRINGS, NEVADA  
CREECH AFB (KINS)