

MISSION DATA CARD

OPORD		Callsign		Mission		Date/Time		
3396/2024		Panther 7		Training		142006NOV24		
Task	Test Flight - (Rig Test)					Freq		
AO	Blue Corridor					134.75		
Departure				Recovery				
DREAM FOUR				HI-TACAN Z RWY 21L				
#	Callsign		Pilot		IFF	TCN	LSR	NET
-1	Panther 7-1		Prinz		1771	1Y	1671	41/01

LOADOUT

A/A	2xA9X, A120C				GUN	100% HEI-T	
A/G	2xG38				CHF	60	
POD	TGP				FLR	60	
TKS	3xFPU-8A				FUEL	100%	

TOLD

	Takeoff	Target	Joker	Bingo	Land
FUEL	17535		3500	2500	

AIRBASES

	Name	TCN	ATIS	GND	TWR	RWY	Elev	ILS
Dep	Nellis AFB	12X	270.1	275.8	327.0	21L	1850	109.1
Arr	Nellis AFB	12X	270.1	275.8	327.0	21L	1850	109.1
Div	Creech AFB	87X	290.45	275.8	360.6			

FLIGHTPLAN

#	Name	Navaid/Coords/DME	ALT	TOT
1	JUNNO	BLD 346/44 (N36 43.800 W114 52.770)	20000	
2	DREAM	LAS 354/66 BLD 342/71 (N37 10.340 W114 59.530)	20000	
3	TROUTT	LSV 323/63 (N37 17 W115 07.050)	20000	
4	Student Gap	LSV 349/82 (N37 37 W115)	20000	
5	BIGHORN	LSV 347/97 (N37 52 W115 02)	28000	
6	T71.12	N37 39.918 W116 56.579	4777	
7	ELKXX	LSV 001/100 (N37 52 W114 30)	28000	
8	MOOSE	LSV 016/94 (N37 36.770 W114 04.420)	28000	
9	TIMBR	LSV 011/33 (N36 45 W114 44.580)	28000	
10	ACTON	LSV 021/36 (N36 44.520 W114 36.450)	10000	

COMMS

Radio	Usage
1	(3), (4), (16),
2	(19) ARC1
3	MIDS A: 22 / B: 44

NOTES

Waypoint: T71.12

Elevation: 4777

MGRS: 11S NB 05028 68681

DD°MM.MMM' N: 37°39.918'

DDD°MM.MMM' W: 116°56.579'

DD°MM'SS" N: 37°39'55"

DDD°MM'SS" W: 116°56'34"

SUPPORT**Tanker**

Callsign	TCN	Freq	ALT	TAS
ARCO 1	113Y	319.8	FL250	450
	Pos	AR-625: MVA 168/77 (N3717 W11802)		
SHELL 2	115Y	360.8	FL250	430
	Pos	AR-635: MLF 260/127 (N3831 W11542)		

AWACS

Callsign	Freq	ALT	Pos
MAGIC	377.8	FL270	N3749 W11417 - N3713 W11446

OTHER FLIGHTS

Callsign	Mission	Airframe	Freq	TCN	Grpld	Laser
T-Rex 2	Training	3x A-10C	132.25	1/64	25	165X
AO	Container Groom Lake	Task	SAM Evasion			
Edelweiss 5	Training	4x F/A-18C	264.55	12/75	1	175X
AO		Task	Air2Air Refuel, Bomb Delivery, Gun Runs, Tac Turns R64C			
Snake 6	Training	4x AH-64D	133.5	1/64		139X
AO		Task	Formation Procedures			
Tiger 1	Training	2x F/A-18C	261.15	1/64	1	155X
AO	Range X	Task	BVR Training			
Nazgul 6	Training	4x F-15E	262.45	1/64		156X
AO	Range 66	Task	CAS Training			

RADIO CHANNELS

#	Freq	Name
1		Flight/Squadron specific
2	289.4	Nellis Clearance Delivery
3	275.8	Nellis Ground
4	327.0	Nellis Tower
5	385.4	Nellis Approach/Departure West
6	273.55	Nellis Approach/Departure East
7	317.525	Nellis Control -- Sally
8	254.4	Nellis Control-- Lee
9	305.6	SOF Bullseye
10	343.725	EMERGENCY SINGLE FRQ
11	270.1	Nellis ATIS
12	360.625	Creech AFB Tower
13	250.1	HAVE QUICK 13
14	251.1	HAVE QUICK 14
15	252.1	HAVE QUICK 15
16	377.8	Blackjack
17	265.0	KC-135 AR-641A
18	360.8	KC-135MPRS AR-635
19	319.8	KC-135MPRS AR-625
20	300.05	KC-135 AR-231V

RAMROD

0	1	2	3	4	5	6	7	8	9
J	O	U	R	N	A	L	I	S	M

KTC 1400 C

	0	1	2	3	4	5	6	7	8	9
A	CIJE	GUR	VFP	OY	DA	QHS	TM	LN	KX	BW
B	XALH	FQS	GOY	CE	VD	TKN	IU	WP	BR	MJ
C	XKCN	DVH	LSE	BY	QP	OUT	WG	IR	JA	FM
D	XJVC	QSW	KIN	HA	UB	DPE	TO	RG	YL	MF
E	SJWA	KVP	QOH	TM	LX	NGB	RC	FD	YI	UE
F	IXUK	NJQ	MAT	FO	SR	GPL	HW	CY	DB	EV
G	RE VW	JBD	TIX	PK	CS	YHA	UN	ML	FO	GQ
H	GWJP	XIQ	KYE	BM	TF	AOH	SD	CL	UN	RV
I	UCLH	MAG	JIQ	ON	YS	BTF	ED	KX	RV	WP
J	KTVI	HYM	CAF	NE	XD	GOR	LS	UW	QP	JB
K	AHTK	UFY	LDG	ON	SE	XIB	WC	QM	JV	RP
L	HGXU	ENY	VMC	QW	IL	AJK	TR	OB	PF	SD
M	YQTH	WCS	LGN	BF	UJ	MPX	AE	RK	IO	DV
N	TEMY	JQN	OCA	DS	WG	RXL	UB	FH	IK	VP
O	VLNS	DJF	EKO	IH	RY	WPM	GU	AX	TB	QC
P	YWEG	OAC	DBN	TF	RQ	XHK	SM	LV	JI	UP
Q	GKCE	QUW	DFS	RI	XV	PYM	LJ	AT	BH	NO
R	FVDX	UEC	NSW	BK	LI	TOR	HM	GP	AY	JQ
S	RIVG	KWB	PSX	TO	JN	LMU	AE	CQ	DY	HF
T	PQHO	RTJ	BCF	SV	IE	KLA	XW	MG	UN	YD
U	UCOB	QTD	FNJ	LK	SI	EGV	WA	MH	RY	PX
V	GNYB	XTI	VKW	OM	PJ	QFU	RD	SL	AE	HC
W	HDIR	MKC	JTL	VY	GE	QUP	AN	OB	FW	SX
X	MQSE	YVJ	BOU	PN	XL	WDH	AK	FR	IG	CT
Y	GWEA	MSK	HIB	OY	XF	TJP	LQ	UC	DR	NV

NAVAIDS

Id	Name	Channel	Position	Elevation
BCE	Bryce Canyon	75	N3741.35 W11218.23	9040
BIH	Bishop	33	N3722.62 W11821.99	4114
BLD	Boulder	114	N3559.75 W11451.82	3650
BTY	Beatty	94	N3648.54 W11644.86	2925
CDC	Cedar City	120	N3747.24 W11304.90	5463
DAG	Daggett	79	N3457.75 W11634.69	1760
EED	Needles	99	N3445.96 W11428.43	650
GFS	Goffs	91	N3507.87 W11510.59	4019
GRL	Groom Lake	18	N3713.91 W11548.16	4475
HEC	Hector	74	N3447.83 W11627.78	1854
ILC	Wilson Creek	110	N3815.02 W11423.65	9318
INS	Creech AFB	87	N3635.20 W11540.12	3101
LAS	McCarran Intl	116	N3604.78 W11509.59	2142
LSV	Nellis	12	N3614.68 W11501.50	1864
MLF	Milford	58	N3821.62 W11300.79	4977
MMM	Mormon Mesa	90	N3646.16 W11416.65	2120
MVA	Mina	98	N3833.92 W11801.97	7860
OAL	Coale Dale	124	N3800.20 W11746.23	4800
PGS	Peach Springs	57	N3537.48 W11332.67	4754
TPH	Tonopah Muni	119	N3801.84 W11702.01	5330
TQQ	Silverbow	77	N3748.00 W11647.00	5500
UTI	St George	23	N3705.29 W11335.53	2871



RWY 3L-21R
 PCN 46 R/C/W/T
 RWY 3R-21L
 PCN 51 R/C/W/T
 2017

PAR	RWY	CAT	MINIMA		ARP	ELEV	Scale 1:35'500	
	21L	A B D E	2057 - 0.8 200	(200-0.8/1.6) GS 3°	36° 14.060° N 115° 01.058° W	1857 [ft] 566 [m]	0 300 600 900 1200 1500 [m]	
	3R	A B D E	2057 - 0.8 200	(200-0.8/1.6) GS 3°			0 1000 2000 3000 4000 5000 [ft]	
SRA	21R	A C D E	2257 - 1.2 350	(350-1.2/1.6)				
	3L	A C D E	2257 - 1.2 350	(350-1.2/1.6)				

RWY	TORA	TODA	ASDA	LDA	PSN	THR	ALS
21L	10051 [ft] 3063 [m]	11051 [ft] 3368 [m]	11051 [ft] 3368 [m]	10051 [ft] 3063 [m]	36°14.043' N	115°01.018' W	⊕
3R	10120 [ft] 3084 [m]	11120 [ft] 3398 [m]	11120 [ft] 3398 [m]	10120 [ft] 3084 [m]	36°13.029' N	115°02.038' W	

ATIS	NELLIS GROUND	NELLIS TOWER	NELLIS CONTROL	TACAN	ILS RWY 21L	NELLIS EAST	NELLIS WEST
270.100 MHz	275.800 121.800	327.000 132.55	317.525	LSV 12X	109.10 Mhz	384.400	385.000

DREAM FOUR DEPARTURE DREAM4 | VALID 2014 LAS VEGAS, NEVADA

NELLIS AFB (KLSV)
LAS VEGAS, NEVADA

ATIS
270.100
NELLIS GROUND
275.800
NELLIS TOWER
327.000
NELLIS CONTROL
317.525
NELLIS DEP/APP EAST
384.400
BLACKJACK
377.800

DREAM
N3710.34
W11459.53

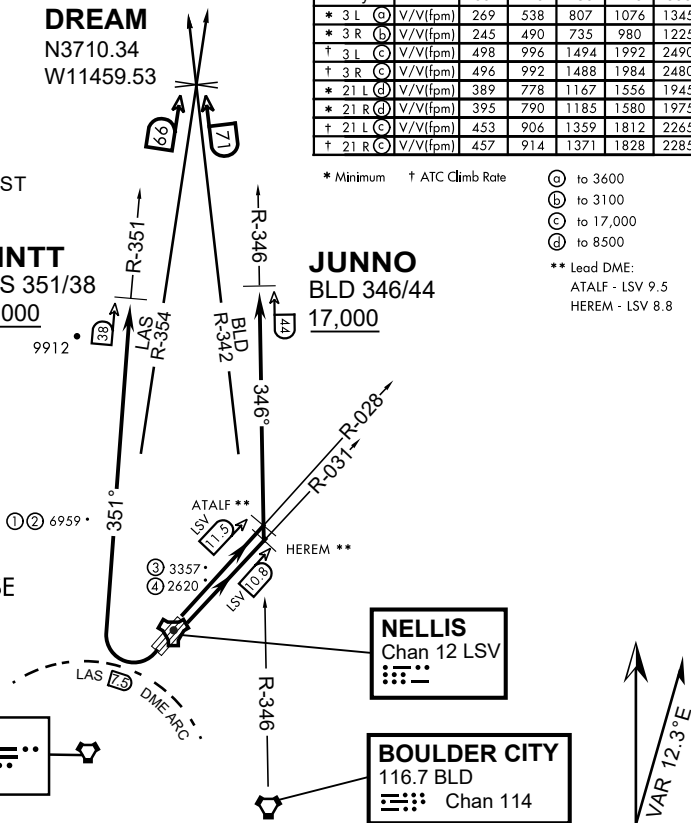
MINTT
LAS 351/38
17,000

Rwy	Knots	60	120	180	240	300	360
* 3 L (A)	V/V(fpm)	269	538	807	1076	1345	1614
* 3 R (B)	V/V(fpm)	245	490	735	980	1225	1470
† 3 L (C)	V/V(fpm)	498	996	1494	1992	2490	2988
† 3 R (C)	V/V(fpm)	496	992	1488	1984	2480	2976
* 21 L (D)	V/V(fpm)	389	778	1167	1556	1945	2334
* 21 R (D)	V/V(fpm)	395	790	1185	1580	1975	2370
† 21 L (C)	V/V(fpm)	453	906	1359	1812	2265	2718
† 21 R (C)	V/V(fpm)	457	914	1371	1828	2285	2742

* Minimum † ATC Climb Rate

- (A) to 3600
 - (B) to 3100
 - (C) to 17,000
 - (D) to 8500
- ** Lead DME:
ATALF - LSV 9.5
HEREM - LSV 8.8

- ① 12.24 NM from Rwy 21R
- ② 12.40 NM from Rwy 21L
- ③ 5.67 NM from Rwy 3L
- ④ 5.85 NM from Rwy 3R



NOT FOR CIVIL USE

CAUTION: If unable to comply with restrictions advise ATC prior to departure.

DEPARTURE ROUTE DESCRIPTION

TAKE-OFF RWY 3L

- Fly runway heading to intercept the LSV TACAN R-028 then direct ATALF, intercept the BLD VORTAC R-346 then direct JUNNO, cross JUNNO at or above 17,000, then via assigned route.

TAKE-OFF RWY 3R

- Fly runway heading to intercept the LSV TACAN R-031 then direct HEREM, intercept the BLD VORTAC R-346 then direct JUNNO, cross JUNNO at or above 17,000, then via assigned route.

TAKE-OFF RWY 21L/R

- Turn right to intercept LAS VORTAC R-351 outbound. Remain North of LAS 7.5 DME turning Northbound. Intercept LAS R-351 between 5000 and 6000, do not proceed West of LAS R-351. Cross MINTT at or above 17,000, then via assigned route.

NOISE ABATMENT PROCEDURES: Fly acc. Nellis Noise Abatement instructions

DREAM FOUR DEPARTURE (DREAM4 • DREAM)

HI-TACAN Z RWY 21L

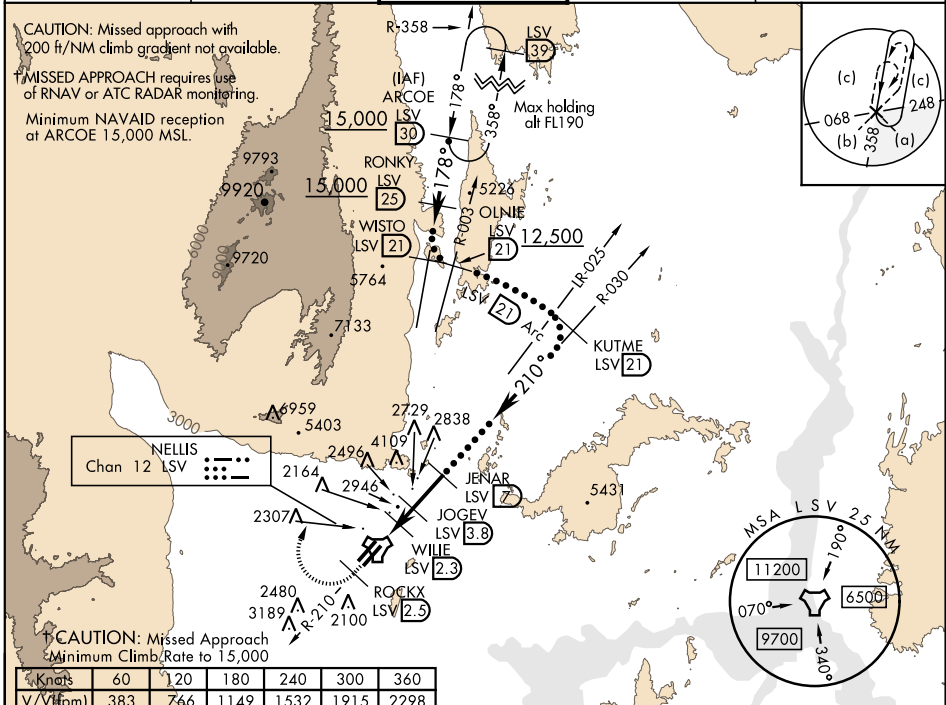
TACAN LSV Chan 12	APCH CRS 210°	Rwy ldg 21L 10,051 TDZE 1865 Arprt Elev 1869	Rwy ldg 21R 10,120 TDZE 1869	JAL-227 [USAF]	NELLIS AFB (KLSV)
-------------------	---------------	--	------------------------------	----------------	-------------------

▼ * When ALS inop, increase CAT CDE vis to 1 3/4 miles.
****** Circling not authorized E of Rwy 3R-21L.

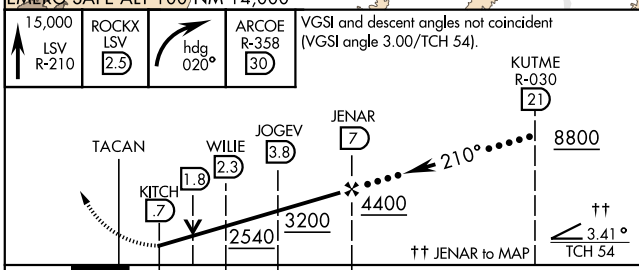
ALSIF-1

† MISSED APPROACH: Climb to 15,000, intercept LSV TACAN R-210 to 2.5 DME (ROCKX), then climbing right turn heading 020° to join LSV R-358 to ARCOE and hold, continue climb in hold to 15,000. Missed approach not for civil use.

ATIS 270.1	NELLIS APP CON 124.95 273.55	NELLIS TOWER 132.55 327.0	GND CON 121.8 275.8	CLNC DEL 120.9 289.4
------------	------------------------------	---------------------------	---------------------	----------------------

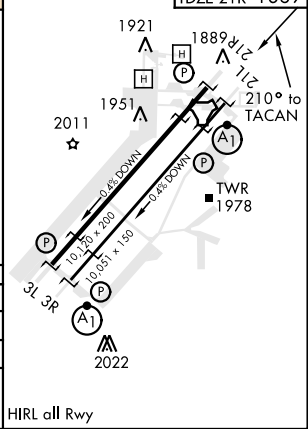


15,000 LSV R-210	ROCKX LSV 2.3	ARC OE R-358 30
hdg 020°		



CATEGORY	C	D	E
S-21L *	2460-1 1/4	595 (600-1 1/4)	
SIDESTEP 21R	2460-1	591 (600-1)	
C CIRCLING **	2620-2 1/4 751 (800-2 1/4)	2840-3 971 (1000-3)	3040-3 1171 (1200-3)

ELEV 1869	TDZE 21L 1865
	TDZE 21R 1869



HI-TACAN Z RWY 21L

SW-4, 05 DEC 2019 to 02 JAN 2020

SW-4, 05 DEC 2019 to 02 JAN 2020



INDIAN SPRINGS, NEVADA

TACAN INS Chan 87	APCH CRS 065°	Rwy ldg TDZE 3133	9002 3113
		Arpt Elev 3113	

INDIAN SPRINGS AF AUX (KINS)

▼ * MISSED APPROACH: Straight ahead to INS TACAN, intercept INS R-outbound, cross 17 DME at or above 9500, then direkt KSV TACAN 114

NELLIS CON

CREECH AFB TOWER
118.30 60.60

GND CON

NOT FOR CIVIL USE

FOR USE UNDER BASIC VFR
WEATHER MINIMUMS ONLY

PILOT IS RESPONSIBLE FOR TERRAIN/OBSTACLE AVOIDANCE AND APPROPRIATE VFR CLOUD CLEARANCE FOR ALL

CAUTION: Descent gradients are greater than allowed under standard TERPS criteria and inbound course does not meet straight-in criteria

CAUTION: Final approach course crosses Runway centerline at MIDFIELD. Maneuvering left of course required prior to landing. Do not Maneuver farther north than the INS R- 258

Modified by viaBog 66 for use with DCS
NOT FOR REAL LIFE NAVIGATION

Modified by viaBog 66 for use with DCS
NOT FOR REAL LIFE NAVIGATION



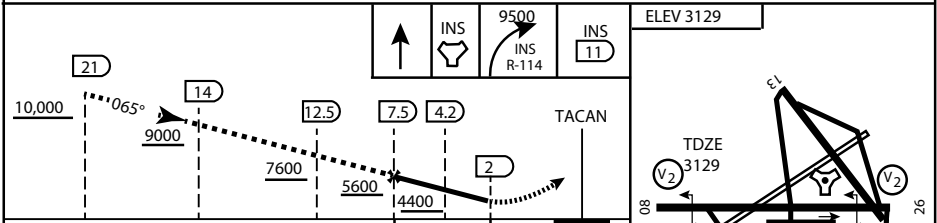
* CAUTION: Missed Approach Climb Rate to 4,700

Knots	60	120	180	240	300
V/V (fpm)	230	460	690	920	1150

Controlling Obstacle

HIGH ALTITUDE FACILITIES

EMERG SAFE ALT 100 NM 14,000



CATEGORY	A	B	C	D	E
S-8	3760-1 1/2	627 (700-1 1/2)	3760-1 3/4 627 (700-1 3/4)	3760-2 627 (700-2)	3760-2 1/4 627 (700-2 1/4)
CIRCLING	NOT AUTHORIZED				

ELEV 3129

3165

065° 6.3NM from FAF

MIRL Rwy 8-26

CITY OF INDIAN, NEVADA

INDIAN SPRINGS AF AUX (KINS)

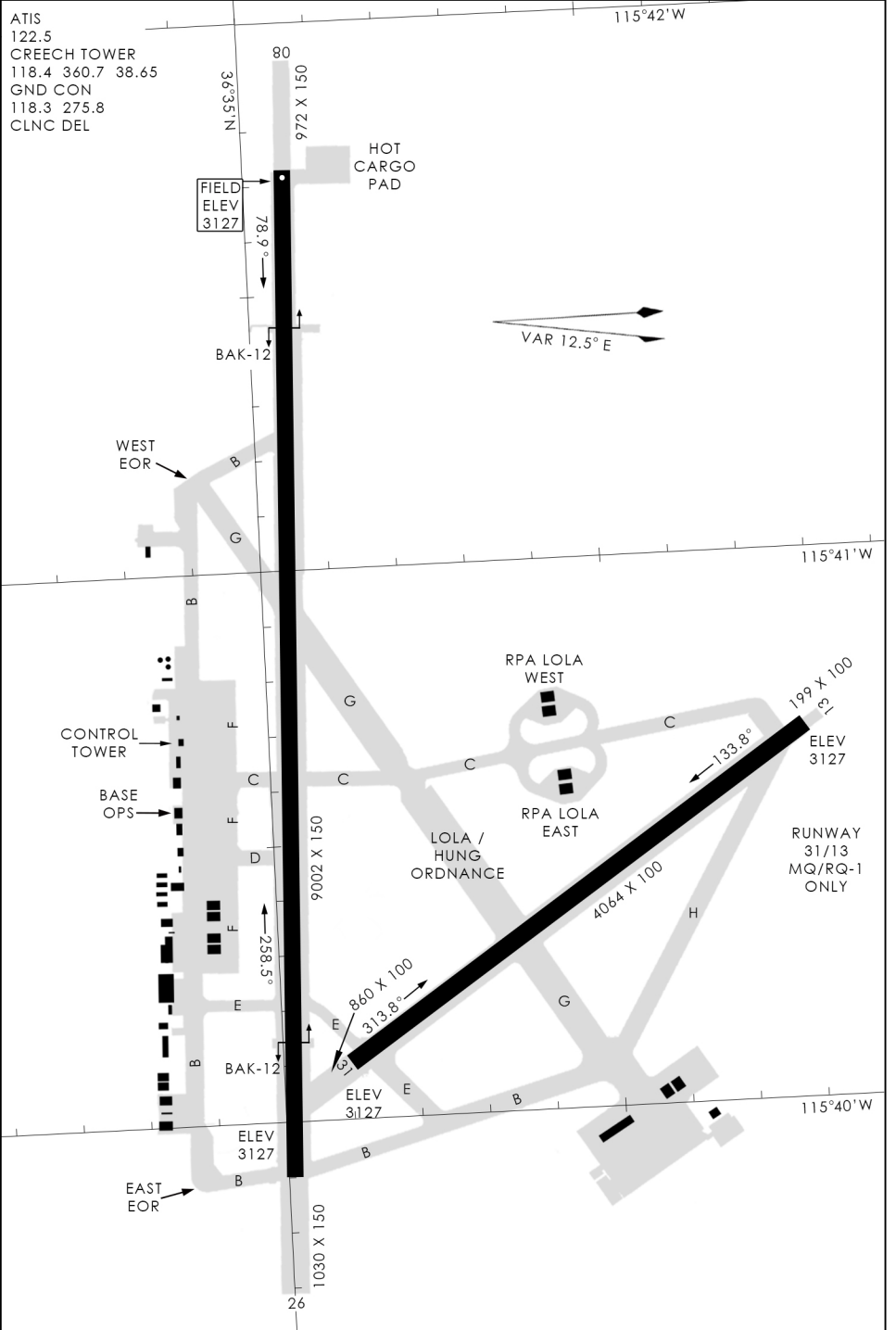
(FOR DAY VFR USE ONLY)



AIRPORT DIAGRAM

476 VFG

CREECH AFB (KINS)
INDIAN SPRINGS, NEVADA



476 VFG JAN 2019

476 VFG JAN 2019

AIRPORT DIAGRAM

INDIAN SPRINGS, NEVADA
CREECH AFB (KINS)