

MISSION DATA CARD

OPORD		Callsign		Mission		Date/Time		
3390/2024		Edelweiss 1		Training		101240NOV24		
Task							Freq	
AO							264.15	
Departure				Recovery				
DREAM FOUR				HI-TACAN Y RWY 21L				
#	Callsign		Pilot		IFF	TCN	LSR	NET
-1	Edelweiss 1-1		Coach		1711	12X	1711	
-2	Edelweiss 1-2		Cloud		1712	75X	1712	

LOADOUT

A/A	2xA9X					GUN	76% HEI-T
A/G						CHF	120
POD						FLR	0
TKS	FPU-8A					FUEL	100%

TOLD

	Takeoff	Target	Joker	Bingo	Land
FUEL	13047				

AIRBASES

	Name		TCN	ATIS	GND	TWR	RWY	Elev	ILS
Dep	Nellis AFB		12X	270.1	275.8	327.0	21L	1850	109.1
Arr	Nellis AFB		12X	270.1	275.8	327.0	21L	1850	109.1
Div	Creech AFB		87X	290.45	275.8	360.6			

COMMS	
Radio	Usage
1	327.000

SUPPORT**Tanker**

Callsign	TCN	Freq	ALT	TAS
ARCO 1	113Y	319.8	FL250	450
Pos	AR-625: MVA 168/77 (N3717 W11802)			

RADIO CHANNELS

#	Freq	Name
1		Flight/Squadron specific
2	289.4	Nellis Clearance Delivery
3	275.8	Nellis Ground
4	327.0	Nellis Tower
5	385.4	Nellis Approach/Departure West
6	273.55	Nellis Approach/Departure East
7	317.525	Nellis Control -- Sally
8	254.4	Nellis Control-- Lee
9	305.6	SOF Bullseye
10	343.725	EMERGENCY SINGLE FRQ
11	270.1	Nellis ATIS
12	360.625	Creech AFB Tower
13	250.1	HAVE QUICK 13
14	251.1	HAVE QUICK 14
15	252.1	HAVE QUICK 15
16	377.8	Blackjack
17	265.0	KC-135 AR-641A
18	360.8	KC-135MPRS AR-635
19	319.8	KC-135MPRS AR-625
20	300.05	KC-135 AR-231V

RAMROD

0	1	2	3	4	5	6	7	8	9
H	Y	S	T	E	R	I	C	A	L

KTC 1400 C

	0	1	2	3	4	5	6	7	8	9
A	HCLM	FWR	YTQ	BA	IG	JSK	DX	NV	EP	UO
B	WCIF	KUL	JBS	PX	TR	GAH	YM	ED	OV	NQ
C	VEKH	TSQ	YUP	NC	WM	DJB	IG	AR	LF	OX
D	WTHI	GXJ	CPV	OQ	EN	USF	AK	ML	BY	DR
E	AKEH	SQL	UGW	IV	JF	CXP	YN	RT	BD	OM
F	HOCN	AVP	IKL	QB	XM	WTE	FD	JU	SG	RY
G	LSFB	XEJ	NOK	GH	AM	VRQ	WD	TC	PU	YI
H	IXBN	EFD	RTG	KJ	WU	LVO	SC	PH	YM	AQ
I	UEYG	PQB	TFR	SO	WN	JAC	IH	XM	VD	LK
J	WHSR	GNC	VQU	TE	OY	IJM	DB	FX	KL	PA
K	NDVI	MPE	WYQ	UR	SK	BLH	AX	OJ	FT	CG
L	XEAJ	FBR	USC	VD	LN	PIM	YW	HT	OQ	GK
M	IMEW	ATY	RSB	KX	FJ	VUG	LD	OQ	PH	NC
N	YHUW	XEJ	APL	MD	IV	KOR	TG	BQ	FS	CN
O	WABD	TJP	LHI	KU	CV	RXO	SY	EG	FQ	MN
P	VJFW	TIY	URK	PH	BO	XCL	GA	NM	DE	SQ
Q	LKCP	DAE	IYH	BJ	WO	SUG	NX	TR	QV	MF
R	BYPU	ALM	WNX	VC	HG	OJT	IF	KD	EQ	RS
S	DMFG	EPH	TVO	UN	JR	SLK	AB	IQ	CW	XY
T	YVFC	NJG	KMD	AS	PB	XQT	RI	LU	HE	OW
U	IYAG	MSV	QRB	EU	NT	WFD	KP	LJ	XC	HO
V	SWUO	LRE	BAI	YJ	DC	HPT	VX	QF	KG	NM
W	SHIU	XDO	JMN	YE	WF	KRV	BL	TG	PC	QA
X	OWPH	XIT	LSC	FB	GJ	NKA	UY	QD	VE	RM
Y	YBNL	ORE	IHW	GJ	FV	PSX	TA	QK	DM	UC

NAVAIDS

Id	Name	Channel	Position	Elevation
BCE	Bryce Canyon	75	N3741.35 W11218.23	9040
BIH	Bishop	33	N3722.62 W11821.99	4114
BLD	Boulder	114	N3559.75 W11451.82	3650
BTY	Beatty	94	N3648.54 W11644.86	2925
CDC	Cedar City	120	N3747.24 W11304.90	5463
DAG	Daggett	79	N3457.75 W11634.69	1760
EED	Needles	99	N3445.96 W11428.43	650
GFS	Goffs	91	N3507.87 W11510.59	4019
GRL	Groom Lake	18	N3713.91 W11548.16	4475
HEC	Hector	74	N3447.83 W11627.78	1854
ILC	Wilson Creek	110	N3815.02 W11423.65	9318
INS	Creech AFB	87	N3635.20 W11540.12	3101
LAS	McCarran Intl	116	N3604.78 W11509.59	2142
LSV	Nellis	12	N3614.68 W11501.50	1864
MLF	Milford	58	N3821.62 W11300.79	4977
MMM	Mormon Mesa	90	N3646.16 W11416.65	2120
MVA	Mina	98	N3833.92 W11801.97	7860
OAL	Coale Dale	124	N3800.20 W11746.23	4800
PGS	Peach Springs	57	N3537.48 W11332.67	4754
TPH	Tonopah Muni	119	N3801.84 W11702.01	5330
TQQ	Silverbow	77	N3748.00 W11647.00	5500
UTI	St George	23	N3705.29 W11335.53	2871



PAR	RWY	CAT	MINIMA	ARP	ELEV	Scale
	21L	A B D E	2057 - 0.8 200 (200-0.8/1.6) GS 3°	36° 14.060° N 115° 01.058° W	1857 [ft] 566 [m]	0 300 600 900 1200 1500 [m] 0 1000 2000 3000 4000 5000 [ft]
	3R	A B D E	2057 - 0.8 200 (200-0.8/1.6) GS 3°			
SRA	21R	A C D E	2257 - 1.2 350 (350-1.2/1.6)			
	3L	A C D E	2257 - 1.2 350 (350-1.2/1.6)			

RWY	TORA	TODA	ASDA	LDA	PSN	THR	ALS
21L	10051 [ft] 3063 [m]	11051 [ft] 3368 [m]	11051 [ft] 3368 [m]	10051 [ft] 3063 [m]	36°14.043' N	115°01.018' W	⊕
3R	10120 [ft] 3084 [m]	11120 [ft] 3398 [m]	11120 [ft] 3398 [m]	10120 [ft] 3084 [m]	36°13.029' N	115°02.038' W	

ATIS	NELLIS GROUND	NELLIS TOWER	NELLIS CONTROL	TACAN	ILS RWY 21L	NELLIS EAST	NELLIS WEST
270.100 MHz	275.800 121.800	327.000 132.55	317.525	LSV 12X	109.10 Mhz	384.400	385.000

DREAM FOUR DEPARTURE DREAM4 | VALID 2014

NELLIS AFB (KLSV)
LAS VEGAS, NEVADA

ATIS
270.100
NELLIS GROUND
275.800
NELLIS TOWER
327.000
NELLIS CONTROL
317.525
NELLIS DEP/APP EAST
384.400
BLACKJACK
377.800

DREAM
N3710.34
W11459.53

MINTT
LAS 351/38
17,000

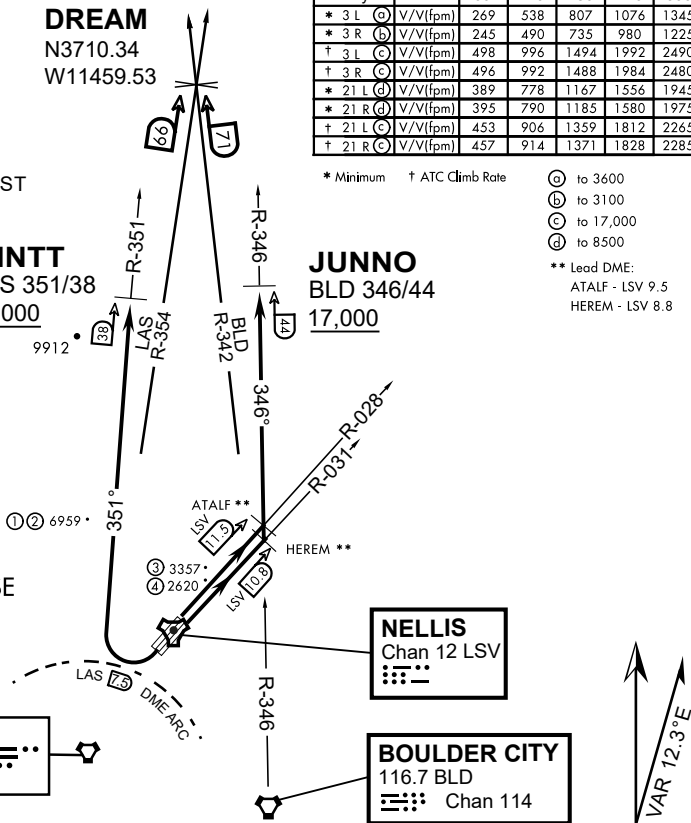
JUNNO
BLD 346/44
17,000

Rwy	Knots	60	120	180	240	300	360
* 3 L (A)	V/V(fpm)	269	538	807	1076	1345	1614
* 3 R (B)	V/V(fpm)	245	490	735	980	1225	1470
† 3 L (C)	V/V(fpm)	498	996	1494	1992	2490	2988
† 3 R (C)	V/V(fpm)	496	992	1488	1984	2480	2976
* 21 L (D)	V/V(fpm)	389	778	1167	1556	1945	2334
* 21 R (D)	V/V(fpm)	395	790	1185	1580	1975	2370
† 21 L (C)	V/V(fpm)	453	906	1359	1812	2265	2718
† 21 R (C)	V/V(fpm)	457	914	1371	1828	2285	2742

* Minimum † ATC Climb Rate

- (A) to 3600
 - (B) to 3100
 - (C) to 17,000
 - (D) to 8500
- ** Lead DME:
ATALF - LSV 9.5
HEREM - LSV 8.8

- ① 12.24 NM from Rwy 21R
- ② 12.40 NM from Rwy 21L
- ③ 5.67 NM from Rwy 3L
- ④ 5.85 NM from Rwy 3R



NOT FOR CIVIL USE

CAUTION: If unable to comply with restrictions advise ATC prior to departure.

DEPARTURE ROUTE DESCRIPTION

TAKE-OFF RWY 3L

- Fly runway heading to intercept the LSV TACAN R-028 then direct ATALF, intercept the BLD VORTAC R-346 then direct JUNNO, cross JUNNO at or above 17,000, then via assigned route.

TAKE-OFF RWY 3R

- Fly runway heading to intercept the LSV TACAN R-031 then direct HEREM, intercept the BLD VORTAC R-346 then direct JUNNO, cross JUNNO at or above 17,000, then via assigned route.

TAKE-OFF RWY 21L/R

- Turn right to intercept LAS VORTAC R-351 outbound. Remain North of LAS 7.5 DME turning Northbound. Intercept LAS R-351 between 5000 and 6000, do not proceed West of LAS R-351. Cross MINTT at or above 17,000, then via assigned route.

NOISE ABATMENT PROCEDURES: Fly acc. Nellis Noise Abatement instructions

DREAM FOUR DEPARTURE (DREAM4 • DREAM)

HI-TACAN Y RWY 21L

TACAN LSV Chan 12	APCH CRS 210°	Rwy ldg 21L 10,051 TDZE 1865 Arprt Elev 1869	Rwy ldg 21R 10,120 TDZE 1869
-------------------	---------------	--	------------------------------

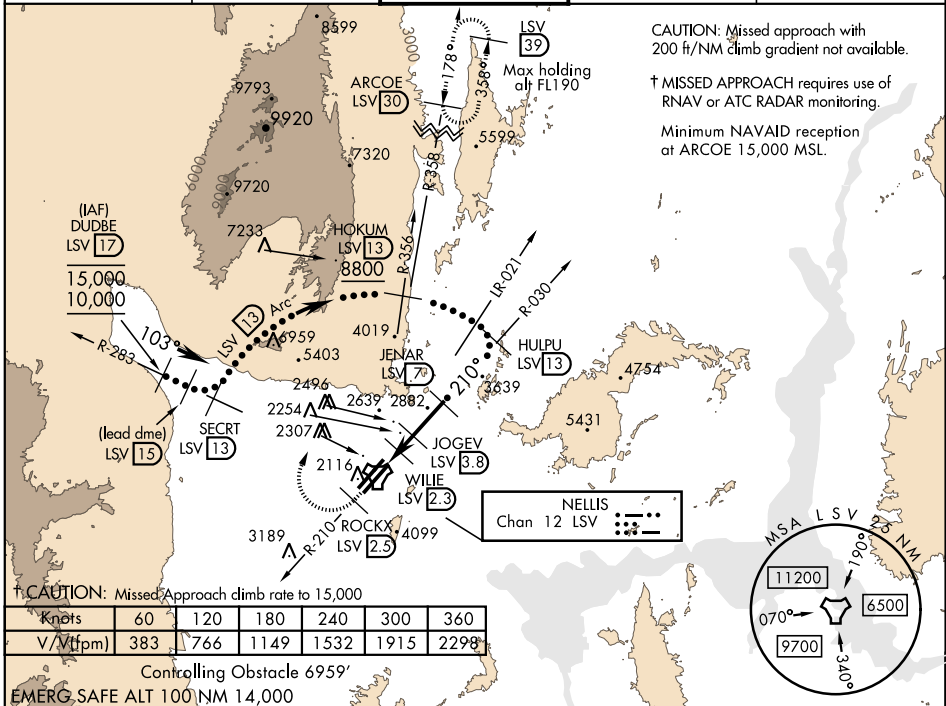
JAL-227 [USAF] NELLIS AFB (KLSV)

* When ALS inop, increase CAT CDE vis to 1 3/4 miles.
 ** Circling not authorized E of Rwy 3R-21L.



† MISSED APPROACH: Climb to 15,000, intercept LSV TACAN R-210 to 2.5 DME (ROCKX), then climbing right turn heading 020° to join LSV R-358 to ARCOE and hold, continue climb in hold to 15,000. Missed approach not for civil use.

ATIS 270.1	NELLIS APP CON 124.95 273.55	NELLIS TOWER 132.55 327.0	GND CON 121.8 275.8	CLNC DEL 120.9 289.4
------------	------------------------------	---------------------------	---------------------	----------------------



CAUTION: Missed approach with 200 ft/NM climb gradient not available.

† MISSED APPROACH requires use of RNAV or ATC RADAR monitoring.

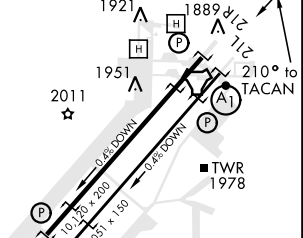
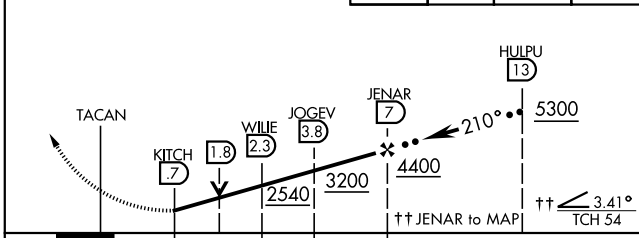
Minimum NAVAID reception at ARCOE 15,000 MSL.

† CAUTION: Missed Approach climb rate to 15,000

Knots	60	120	180	240	300	360
V/Vt (ft/min)	383	766	1149	1532	1915	2298

Controlling Obstacle 6959'
EMERG. SAFE ALT 100 NM 14,000

VGSi and descent angles not coincident (VGSi angle 3.00/TCH 54).	15,000 LSV R-210	ROCKX LSV 2.5	hdg 020°	ARCOE R-358 30	ELEV 1869	TDZE 21L 1865	TDZE 21R 1869
--	------------------	---------------	----------	----------------	-----------	---------------	---------------



CATEGORY	C	D	E
S-21L *	2460-1 1/4	595 (600-1 1/4)	
SIDESTEP 21R	2460-1	591 (600-1)	
CIRCLING **	2620-2 1/4 751 (800-2 1/4)	2840-3 971 (1000-3)	3040-3 1171 (1200-3)

HIRL all Rwy

HI-TACAN Y RWY 21L

SW-4, 05 DEC 2019 to 02 JAN 2020

SW-4, 05 DEC 2019 to 02 JAN 2020



INDIAN SPRINGS, NEVADA

TACAN INS Chan 87	APCH CRS 065°	Rwy ldg TDZE 3113	9002 3113 3113
----------------------	------------------	-------------------------	----------------------

INDIAN SPRINGS AF AUX (KINS)

▼ * MISSED APPROACH: Straight ahead to INS TACAN, intercept INS R-outbound, cross 17 DME at or above 9500, then direkt KSV TACAN 114

NELLIS CON

CREECH AFB TOWER
118.30 60.60

GND CON

NOT FOR CIVIL USE

FOR USE UNDER BASIC VFR
WEATHER MINIMUMS ONLY

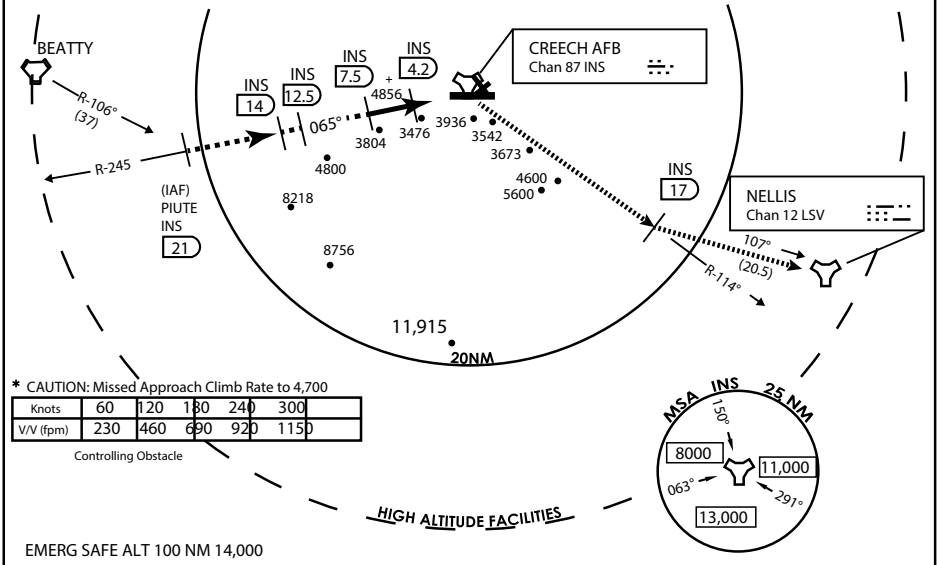
PILOT IS RESPONSIBLE FOR TERRAIN/OBSTACLE
AVOIDANCE AND
APPROPRIATE VFR CLOUD
CLEARANCE FOR ALL

CAUTION: Descent gradients are greater than allowed under standard TERPS criteria and inbound course does not meet straight-in criteria

CAUTION: Final approach course crosses Runway centerline at MIDFIELD. Maneuvering left of course required prior to landing. Do not Maneuver farther north than the INS R- 258

Modified by vJaBoG 66 for use with DCS
NOT FOR REAL LIFE NAVIGATION

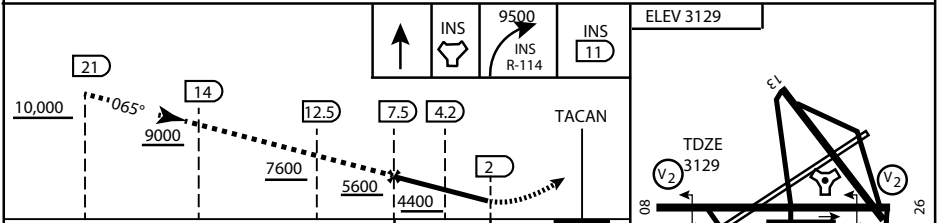
Modified by vJaBoG 66 for use with DCS
NOT FOR REAL LIFE NAVIGATION



* CAUTION: Missed Approach Climb Rate to 4,700					
Knots	60	120	180	240	300
V/V (fpm)	230	460	690	920	1150

Controlling Obstacle

EMERG SAFE ALT 100 NM 14,000



CATEGORY	A	B	C	D	E
S-8	3760-1 1/2	627 (700-1 1/2)	3760-1 3/4 627 (700-1 3/4)	3760-2 627 (700-2)	3760-2 1/4 627 (700-2 1/4)
CIRCLING	NOT AUTHORIZED				

MIRL Rwy 8-26

CITY OF INDIAN, NEVADA

INDIAN SPRINGS AF AUX (KINS)

(FOR DAY VFR USE ONLY)



AIRPORT DIAGRAM

476 vFG

CREECH AFB (KINS)
INDIAN SPRINGS, NEVADA

ATIS
 122.5
 CREECH TOWER
 118.4 360.7 38.65
 GND CON
 118.3 275.8
 CLNC DEL

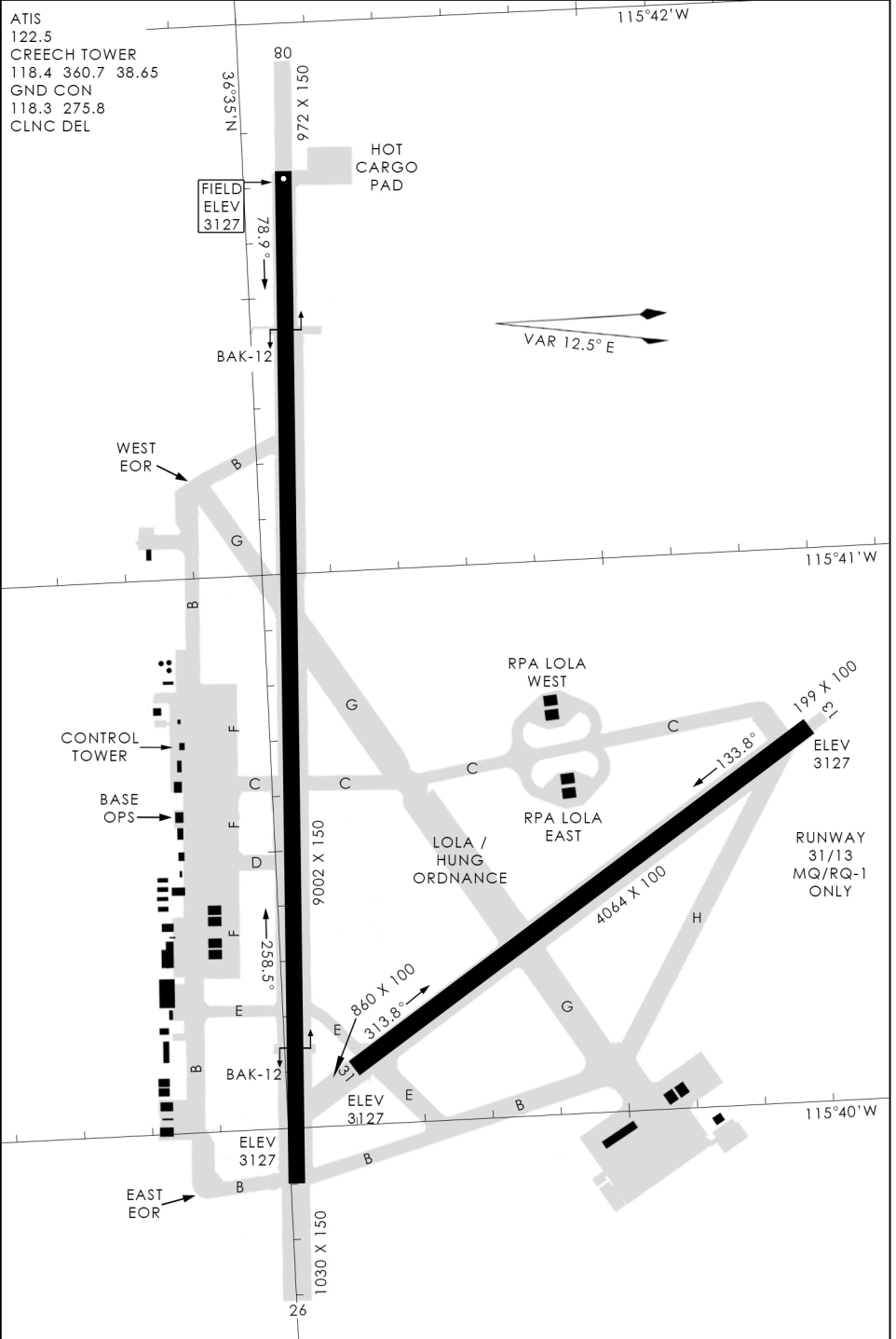
FIELD
 ELEV
 3127

HOT
 CARGO
 PAD

VAR 12.5° E

476 vFG JAN 2019

476 vFG JAN 2019



AIRPORT DIAGRAM

INDIAN SPRINGS, NEVADA
CREECH AFB (KINS)