

MISSION DATA CARD

OPORD		Callsign		Mission		Date/Time		
3388/2024		Nazgul 6		Training		112000NOV24		
Task	CAS Training					Freq		
AO	Range 66					262.45		
Departure				Recovery				
FYTTR THREE				STRYK				
#	Callsign		Pilot		IFF	TCN	LSR	NET
-1	Nazgul 6-1		Striver/UTA		1161	1Y	1561	
-2	Nazgul 6-2		Repsus		1162	64Y	1562	

LOADOUT

A/A	2xA9M, 2xA120C				GUN	100% SAPHEI	
A/G	G311B, 3xG54, 2xG12				CHF	240	
POD	TGT, NAV				FLR	0	
TKS	FT610				FUEL	100%	

TOLD

	Takeoff	Target	Joker	Bingo	Land
FUEL	26553				

AIRBASES

	Name	TCN	ATIS	GND	TWR	RWY	Elev	ILS
Dep	Nellis AFB	12X	270.1	275.8	327.0	21L	1850	109.1
Arr	Nellis AFB	12X	270.1	275.8	327.0	21L	1850	109.1

FLIGHTPLAN

#	Name	Navaid/Coords/DME	ALT	TOT
1	FYTTR	LSV 269/33 (N36 21.440 W115 41.470)	14000	
2	IP Apple	N35 34.470 W116 31.120	15000	
3	Point E	N35 34.470 W116 43.270		
4	DUDBE	N36 21.849 W115 20.581	20000	

COMMS

Radio	Usage
1	262.45
2	04 / 126.5 / 04

NOTES

JTAC Warrior 126.500

SUPPORT**Tanker**

Callsign	TCN	Freq	ALT	TAS
TEXACO 2	95Y	289.7	FL220	420
	Pos	Pegasus.1: CDC 166/102 (N3730 W11440)		

AWACS

Callsign	Freq	ALT	Pos
MAGIC	377.8	FL270	N3749 W11417 - N3713 W11446

OTHER FLIGHTS

Callsign	Mission	Airframe	Freq	TCN	Grpld	Laser
Snake 6	Training	4x AH-64D	133.5	1/64		139X
AO		Task	Formation Procedures			
Warrior	Training	2x Ground	126.5	1/64		170X
AO		Task	JTAC R66			
Edelweiss 1	Training	4x F/A-18C	264.15	12/75	1	171X
AO		Task	Formation, Tac-Turns, AAR, Bomb Delivery			
Edelweiss 2	Training	2x F-16C	134.25	1/64		172X
AO	Range 61	Task	Gun Pattern Training			
Raptor 1	Training	4x F-16C	134.0	1/64		162X
AO	BVR Range Y	Task	BVR Training			
Edelweiss 6	Training	4x A-10C	134.65	1/64	40	166X
AO		Task	AAR			
Tiger 5	Training	2x F/A-18C	261.15	1/64		155X
AO	BVR X	Task	BVR X			

RADIO CHANNELS

#	Freq	Name
1		Flight/Squadron specific
2	289.4	Nellis Clearance Delivery
3	275.8	Nellis Ground
4	327.0	Nellis Tower
5	385.4	Nellis Approach/Departure West
6	273.55	Nellis Approach/Departure East
7	317.525	Nellis Control -- Sally
8	254.4	Nellis Control-- Lee
9	305.6	SOF Bullseye
10	343.725	EMERGENCY SINGLE FRQ
11	270.1	Nellis ATIS
12	360.625	Creech AFB Tower
13	250.1	HAVE QUICK 13
14	251.1	HAVE QUICK 14
15	252.1	HAVE QUICK 15
16	377.8	Blackjack
17	265.0	KC-135 AR-641A
18	360.8	KC-135MPRS AR-635
19	319.8	KC-135MPRS AR-625
20	300.05	KC-135 AR-231V

RAMROD

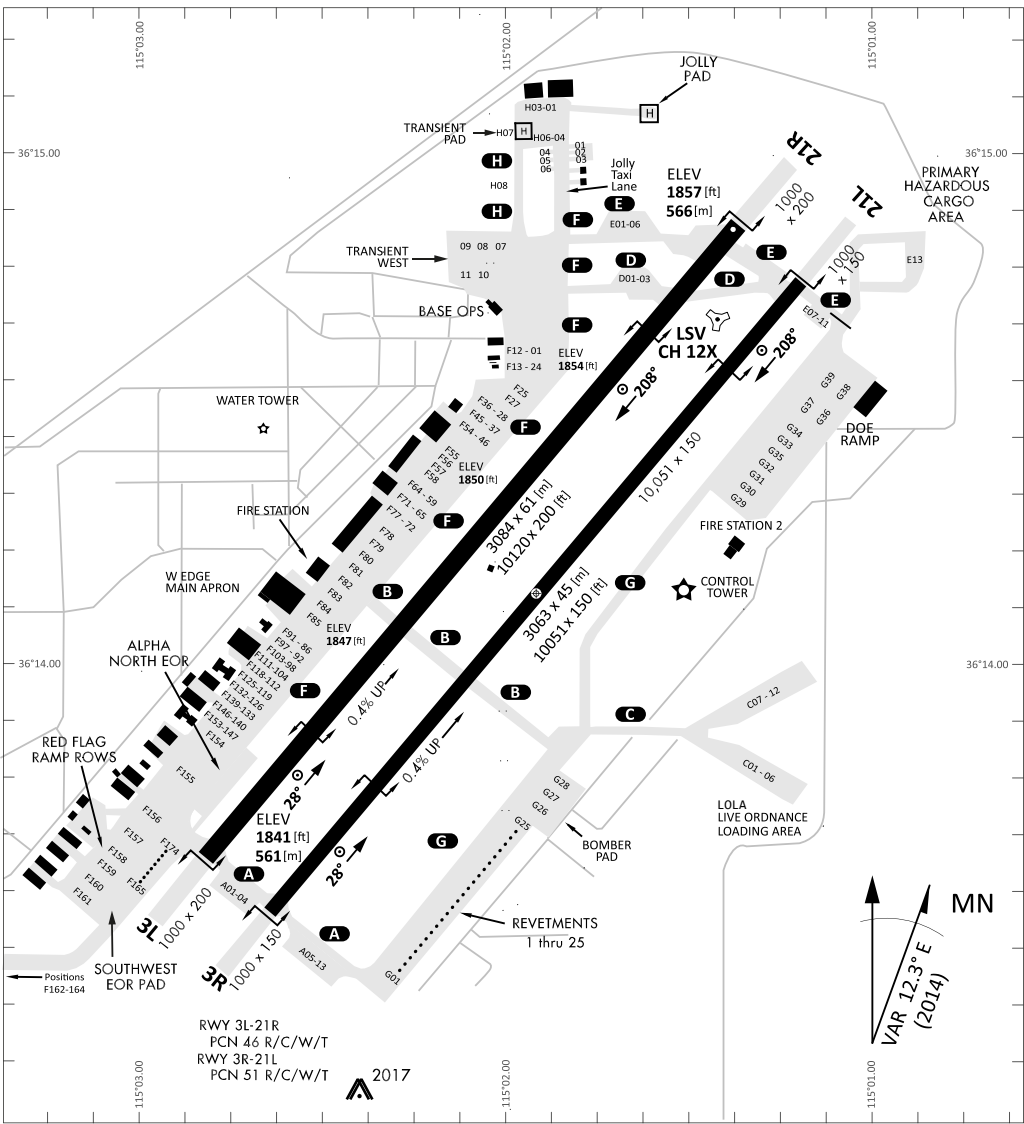
0	1	2	3	4	5	6	7	8	9
M	O	D	U	L	A	T	I	N	G

KTC 1400 C

	0	1	2	3	4	5	6	7	8	9
A	CJOI	XEF	TWK	NB	LV	PQY	MS	UA	DR	GH
B	KTWA	YIE	CGM	DP	LN	RHQ	SU	XV	FO	BJ
C	HBFK	ROS	WJP	NV	MT	XIC	UG	YE	QL	DA
D	ECAJ	LXN	VYU	GF	SM	OBK	QT	WR	DI	HP
E	MTNH	GWP	YOI	BR	QV	JKD	XE	SL	AF	UC
F	QKOX	TAR	PBI	EV	YC	DMU	HL	FW	SG	NJ
G	RVLG	TPX	MCS	HY	DA	UBO	KI	FJ	NW	QE
H	EXGU	TLC	DKN	AW	VI	FMY	RJ	OH	SB	QP
I	MRTH	BLG	YSA	FI	WO	DUX	QJ	CN	VK	EP
J	NOUS	KCX	LAI	PJ	BY	WHM	FQ	GV	TR	ED
K	JKCV	TUI	FNH	LB	WG	DPY	QS	ME	OR	XA
L	THQG	WND	BSE	IX	OC	VAJ	FU	RM	PL	KY
M	WCEQ	PIA	TRV	LB	HS	XJN	GK	MY	UD	OF
N	WXUK	JLR	GCH	AT	DQ	PNB	VI	OY	SM	EF
O	OXGQ	MJL	FPU	ST	CV	RWH	DY	NK	BE	IA
P	GQSE	JAL	VHW	NY	OP	BFT	KM	RD	CI	XU
Q	PNBC	WMV	UFE	KD	TI	XYL	AS	RO	QH	JG
R	JDLK	XAI	PYO	CG	QV	SMF	HU	BT	NR	WE
S	FBOI	UEM	WVN	XQ	DL	RAY	GT	CP	HS	JK
T	AJDW	VLR	IPQ	SM	YK	CXH	TG	NB	EU	OF
U	SADC	WMN	PYB	LX	IE	HOF	GU	QR	TJ	KV
V	MIYS	EVK	NJL	HD	WO	PAG	QT	UX	BC	FR
W	RLUQ	IWY	BDO	SN	PK	TJM	GA	VC	XE	FH
X	RYUJ	GXI	FLB	AM	PV	KNH	EC	SD	TQ	OW
Y	UWBX	EHT	LMS	YK	OA	JFG	PQ	NR	CD	VI

NAVAIDS

Id	Name	Channel	Position	Elevation
BCE	Bryce Canyon	75	N3741.35 W11218.23	9040
BIH	Bishop	33	N3722.62 W11821.99	4114
BLD	Boulder	114	N3559.75 W11451.82	3650
BTY	Beatty	94	N3648.54 W11644.86	2925
CDC	Cedar City	120	N3747.24 W11304.90	5463
DAG	Daggett	79	N3457.75 W11634.69	1760
EED	Needles	99	N3445.96 W11428.43	650
GFS	Goffs	91	N3507.87 W11510.59	4019
GRL	Groom Lake	18	N3713.91 W11548.16	4475
HEC	Hector	74	N3447.83 W11627.78	1854
ILC	Wilson Creek	110	N3815.02 W11423.65	9318
INS	Creech AFB	87	N3635.20 W11540.12	3101
LAS	McCarran Intl	116	N3604.78 W11509.59	2142
LSV	Nellis	12	N3614.68 W11501.50	1864
MLF	Milford	58	N3821.62 W11300.79	4977
MMM	Mormon Mesa	90	N3646.16 W11416.65	2120
MVA	Mina	98	N3833.92 W11801.97	7860
OAL	Coale Dale	124	N3800.20 W11746.23	4800
PGS	Peach Springs	57	N3537.48 W11332.67	4754
TPH	Tonopah Muni	119	N3801.84 W11702.01	5330
TQQ	Silverbow	77	N3748.00 W11647.00	5500
UTI	St George	23	N3705.29 W11335.53	2871



RWY 3L-21R
 PCN 46 R/C/W/T
 RWY 3R-21L
 PCN 51 R/C/W/T
 2017

PAR	RWY	CAT	MINIMA		ARP	ELEV	Scale 1:35'500 0 300 600 900 1200 1500 [m] 0 1000 2000 3000 4000 5000 [ft]
	21L	A B D E	2057 - 0.8 200 (200-0.8/1.6)	GS 3°	36° 14.060° N	1857 [ft]	
	3R	A B D E	2057 - 0.8 200 (200-0.8/1.6)	GS 3°	115° 01.058° W	1857 [ft]	
SRA	21R	A C D E	2257 - 1.2 350 (350-1.2/1.6)				
	3L	A C D E	2257 - 1.2 350 (350-1.2/1.6)				

RWY	TORA	TODA	ASDA	LDA	PSN	THR	ALS
21L	10051 [ft] 3063 [m]	11051 [ft] 3368 [m]	11051 [ft] 3368 [m]	10051 [ft] 3063 [m]	36°14.043° N	115°01.018° W	⊕
3R	10120 [ft] 3084 [m]	11120 [ft] 3398 [m]	11120 [ft] 3398 [m]	10120 [ft] 3084 [m]	36°13.029° N	115°02.038° W	

ATIS	NELLIS GROUND	NELLIS TOWER	NELLIS CONTROL	TACAN	ILS RWY 21L	NELLIS EAST	NELLIS WEST
270.100 MHz	275.800 121.800	327.000 132.55	317.525	LSV 12X	109.10 Mhz	384.400	385.000

FYTTR THREE DEPARTURE IFR CHART | VALID 2014 LAS VEGAS, NEVADA

ATIS
270.100
NELLIS GROUND
275.800
NELLIS TOWER
327.000
NELLIS CONTROL
317.525
NELLIS DEP/APP EAST
384.400
BLACKJACK
377.800



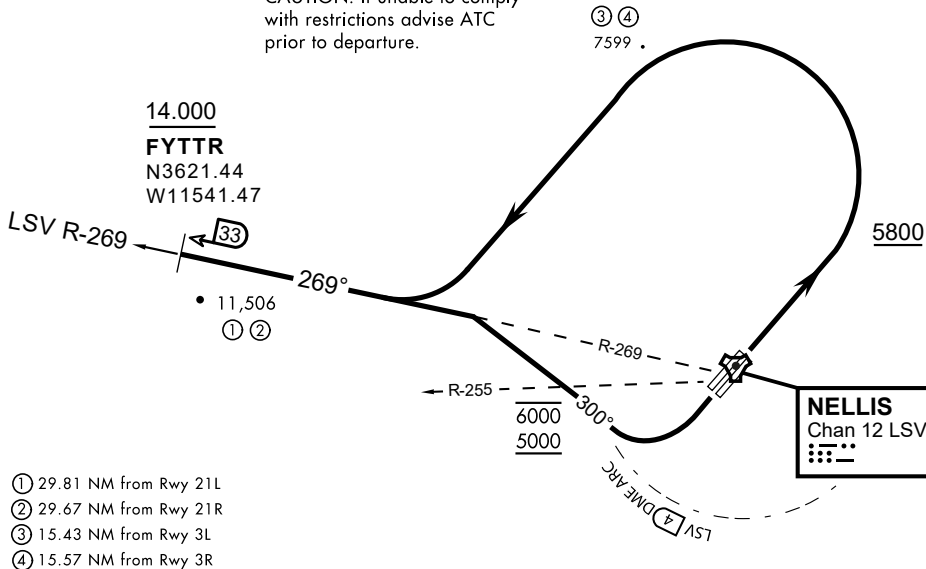
Rwy	Knots	60	120	180	240	300	360
3L (a)	V/V(fpm)	394	788	1182	1576	1970	2364
3R (a)	V/V(fpm)	392	784	1176	1568	1960	2352
21L (b)	V/V(fpm)	388	776	1164	1552	1940	2328
21R (b)	V/V(fpm)	390	780	1170	1560	1950	2340

Minimum Climb Rate

(a) to 9300

(b) to 13 500

CAUTION: If unable to comply with restrictions advise ATC prior to departure.



- ① 29.81 NM from Rwy 21L
- ② 29.67 NM from Rwy 21R
- ③ 15.43 NM from Rwy 3L
- ④ 15.57 NM from Rwy 3R

DEPARTURE ROUTE DESCRIPTION

TAKEOFF RWY 3L/R

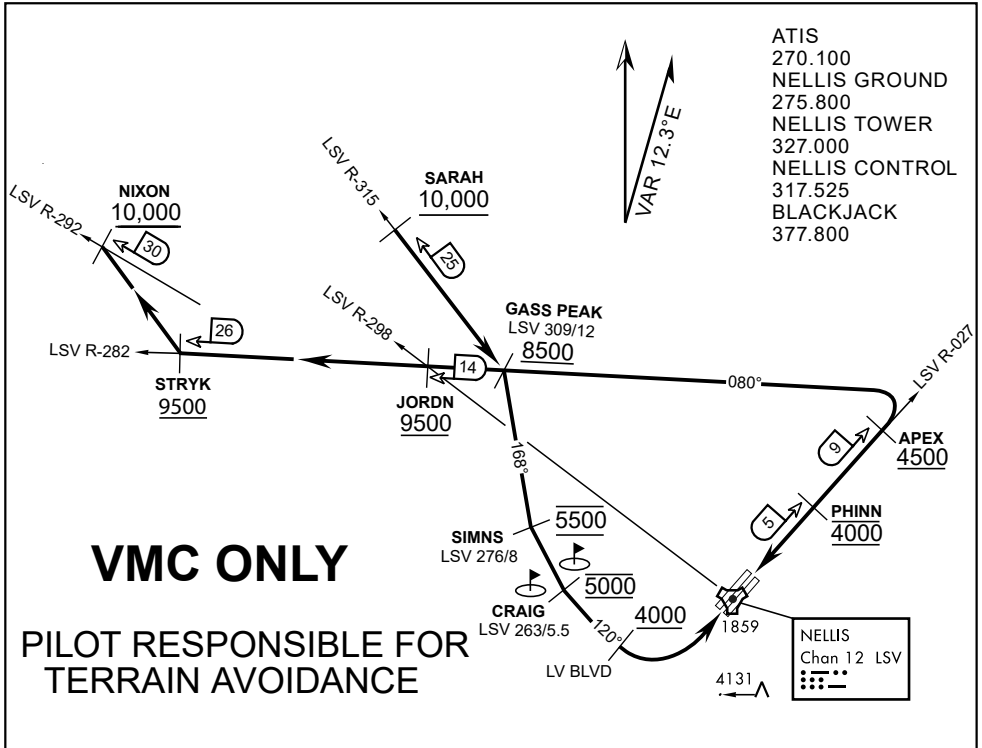
- Fly runway heading until reaching 5,800'.
- Then climbing left turn to intercept LSV TACAN R-269 outbound.
- Cross FYTTR at or above 14,000' or as assigned, then via assigned route.

TAKEOFF RWY 21L/21R

- Turn right to intercept LSV TACAN R-269 outbound.
- Remain within LSV 4 DME until joining LSV R-269
- Cross R-255 between 5,000' and 6,000'.
- Cross FYTTR at or above 14,000' or as assigned, then via assigned route.

NOISE ABATEMENT PROCEDURES:

Fly according Nellis Noise Abatement instructions as published



ATIS
270.100
NELLIS GROUND
275.800
NELLIS TOWER
327.000
NELLIS CONTROL
317.525
BLACKJACK
377.800

VMC ONLY

**PILOT RESPONSIBLE FOR
TERRAIN AVOIDANCE**

APPROACH ROUTE DESCRIPTION

APPROACH RWY 3L/R

Cross STRYK at or above 9,500' MSL, proceed direct GASS PEAK. Cross JORDN at or above 9,500' MSL, cross GASS PEAK at or above 8,500' MSL. Proceed direct SIMNS and cross at 5,500' MSL. Cross Las Vegas Blvd at or above 4,000' MSL then to 3,500' MSL for Initial. Remain within 4 DME if LSV on turn to final.

VFR STRAIGHT-IN RWY 3L/R

Depart CRAIG & descend to be at 3,000' MSL by Las Vegas Blvd. Do not descend below 3,000' MSL until within 5 DME of LSV or 4 NM of the runway on turn to final.

APPROACH RWY 21L/R

Cross STRYK at or above 9,500' MSL, proceed direct GASS PEAK. Cross JORDN at or above 9,500' MSL, cross GASS PEAK at or above 8,500' MSL. Cross APEX at or above 4,500' MSL then direct 5NM initial. Descend to cross PHINN at 4,000' MSL, Inside 5 NM descend to 3,500' MSL.

VFR STRAIGHT-IN RWY 21L/R

Cross APEX at 4,000' MSL. Descend to be at 3,000' MSL at PHINN. Descend to 3,000' MSL at LSV 027/5.

RANGE 63B EXIT

SOUTH: Via NIXON at or above 10,000' MSL, then direct STRYK.
EAST: Via SARAH at or above 10,000' MSL, then direct GASS PEAK.