

MISSION DATA CARD

OPORD		Callsign		Mission		Date/Time		
3387/2024		Snake 6		Training		072000NOV24		
Task	CPG Training					Freq		
AO						133.5		
Departure				Recovery				
HELICOPTER DEP				HELICOPTER ARR				
#	Callsign		Pilot		IFF	TCN	LSR	NET
-1	Snake 6-1		Laud		4461	1Y	1391	
-2	Snake 6-2		Hudson		4462	64Y	1392	

LOADOUT

A/A					GUN	25% HEDP	
A/G	2xAGM114K				CHF	30	
POD					FLR	60	
TKS	FT230				FUEL	100%	

TOLD

	Takeoff	Target	Joker	Bingo	Land		
FUEL	4061		1000	750			

AIRBASES

	Name	TCN	ATIS	GND	TWR	RWY	Elev	ILS
Dep	Nellis AFB	12X	270.1	275.8	327.0	21L	1850	109.1
Arr	Nellis AFB	12X	270.1	275.8	327.0	21L	1850	109.1

FLIGHTPLAN

#	Name	Navaid/Coords/DME	ALT	TOT
1	Gunfighter LZ	N36 14.62 W114 59.68		
2	WEST FLEX	LSV 307/6.5 (N36 18.64 W115 08)		
3	Winner LZ	LSV 356/6 (N36 20.33 W115 00.25)		
4	NORTH GAP	LSV 018/5.5 (N36 20 W114 59.30)		
5	DRY LAKE	LSV 030/15 (N36 27.68 W114 52.21)		
6	SOUTH GAP	LSV 160/2.9 (N36 11.94 W115 00.40)		

COMMS

Radio	Usage
1	133.5
2	327.0
3	35.35

OTHER FLIGHTS

Callsign	Mission	Airframe	Freq	TCN	Grpld	Laser
Nazgul 6	Training	4x F-15E	262.45	1/64		156X
AO	Range 66	Task	CAS Training			
Edelweiss 2	Training	2x F-16C	134.5	16/79		171X
AO		Task	IFR Training			
Edelweiss 4	Training	4x F/A-18C	264.45	12/75		174X
AO		Task	IFR-Training			
Monster 1	Training	4x A-10C	132.15	1/64	21	161X
AO	R61 / GROOM LAKE	Task	MISSILE DEFENSE			
Edelweiss 1	Training	4x F/A-18C	264.15	1/64		171X
AO		Task				

RADIO CHANNELS

#	Freq	Name
1		Flight/Squadron specific
2	289.4	Nellis Clearance Delivery
3	275.8	Nellis Ground
4	327.0	Nellis Tower
5	385.4	Nellis Approach/Departure West
6	273.55	Nellis Approach/Departure East
7	317.525	Nellis Control -- Sally
8	254.4	Nellis Control-- Lee
9	305.6	SOF Bullseye
10	343.725	EMERGENCY SINGLE FRQ
11	270.1	Nellis ATIS
12	360.625	Creech AFB Tower
13	250.1	HAVE QUICK 13
14	251.1	HAVE QUICK 14
15	252.1	HAVE QUICK 15
16	377.8	Blackjack
17	265.0	KC-135 AR-641A
18	360.8	KC-135MPRS AR-635
19	319.8	KC-135MPRS AR-625
20	300.05	KC-135 AR-231V

RAMROD

0	1	2	3	4	5	6	7	8	9
D	I	S	C	O	U	R	A	G	E

KTC 1400 C

	0	1	2	3	4	5	6	7	8	9
A	OGUH	QBI	SDY	VF	RJ	AMW	LP	KX	CT	NE
B	OGUJ	VKL	PNM	ED	CH	FAR	XY	QI	TS	WB
C	FBWP	CSG	AVL	RY	HK	MXE	JO	DU	IN	TQ
D	PHLT	NYX	AJR	QO	VS	KIU	WM	CE	DG	BF
E	OPTQ	BHJ	XMN	GS	CY	UEI	KA	WL	FR	DV
F	ELVY	BJS	COI	PG	XK	TUM	WH	NA	FR	DQ
G	GYIO	ADP	TQS	EH	KV	WMX	NF	LB	RC	JU
H	GWPR	CXN	DEV	MK	IO	SUT	HQ	YF	LB	AJ
I	NGYF	SLX	RAE	WK	OC	VQD	MU	TH	JP	BI
J	CDEY	SHI	KUN	PQ	FT	XGW	VL	MB	OJ	AR
K	VNEL	KQH	TMJ	PB	GA	IUX	YD	SO	FR	WC
L	TPKN	XGC	LQR	WJ	BO	IYA	DF	VE	MS	UH
M	HNVA	GDJ	MCS	WY	EX	UBO	FI	LP	TR	QK
N	FYTA	GEJ	XQC	VK	IB	OSP	LN	WH	DU	MR
O	EPSV	MJG	YKI	BF	TD	ROX	CH	QL	NA	UW
P	BIAF	VHM	QYE	CP	JN	LRT	OK	SW	XG	DU
Q	FCKW	TDG	VEJ	LR	OX	IPU	HM	YB	AQ	NS
R	TELV	SQN	BXU	IF	CJ	GHD	OY	PW	MR	AK
S	NRKV	ISD	BCA	OT	HG	XPF	WM	UY	LQ	EJ
T	KULW	HOX	TIP	BG	CY	JQF	EA	NV	SD	MR
U	HOCU	XLJ	MEK	WR	FP	SGI	QD	NA	VB	YT
V	EWJA	THM	RBI	SP	LK	FQV	UN	OG	XC	DY
W	OQSF	IAP	HCL	BU	KM	YTW	JN	VE	DR	XG
X	VURQ	HSW	JAT	EF	PK	DCI	XG	OL	MB	NY
Y	UNSB	MWE	ICY	VX	TK	DHG	RO	FL	AJ	QP

NAVAIDS

Id	Name	Channel	Position	Elevation
BCE	Bryce Canyon	75	N3741.35 W11218.23	9040
BIH	Bishop	33	N3722.62 W11821.99	4114
BLD	Boulder	114	N3559.75 W11451.82	3650
BTY	Beatty	94	N3648.54 W11644.86	2925
CDC	Cedar City	120	N3747.24 W11304.90	5463
DAG	Daggett	79	N3457.75 W11634.69	1760
EED	Needles	99	N3445.96 W11428.43	650
GFS	Goffs	91	N3507.87 W11510.59	4019
GRL	Groom Lake	18	N3713.91 W11548.16	4475
HEC	Hector	74	N3447.83 W11627.78	1854
ILC	Wilson Creek	110	N3815.02 W11423.65	9318
INS	Creech AFB	87	N3635.20 W11540.12	3101
LAS	McCarran Intl	116	N3604.78 W11509.59	2142
LSV	Nellis	12	N3614.68 W11501.50	1864
MLF	Milford	58	N3821.62 W11300.79	4977
MMM	Mormon Mesa	90	N3646.16 W11416.65	2120
MVA	Mina	98	N3833.92 W11801.97	7860
OAL	Coale Dale	124	N3800.20 W11746.23	4800
PGS	Peach Springs	57	N3537.48 W11332.67	4754
TPH	Tonopah Muni	119	N3801.84 W11702.01	5330
TQQ	Silverbow	77	N3748.00 W11647.00	5500
UTI	St George	23	N3705.29 W11335.53	2871



PAR	RWY	CAT	MINIMA	ARP	ELEV	Scale
	21L	A B D E	2057 - 0.8 200 (200-0.8/1.6) GS 3°	36° 14.060° N 115° 01.058° W	1857 [ft] 566 [m]	0 300 600 900 1200 1500 [m] 0 1000 2000 3000 4000 5000 [ft]
	3R	A B D E	2057 - 0.8 200 (200-0.8/1.6) GS 3°			
SRA	21R	A C D E	2257 - 1.2 350 (350-1.2/1.6)			
	3L	A C D E	2257 - 1.2 350 (350-1.2/1.6)			

RWY	TORA	TODA	ASDA	LDA	PSN	THR	ALS
21L	10051 [ft] 3063 [m]	11051 [ft] 3368 [m]	11051 [ft] 3368 [m]	10051 [ft] 3063 [m]	36°14.043' N	115°01.018' W	⊕
3R	10120 [ft] 3084 [m]	11120 [ft] 3398 [m]	11120 [ft] 3398 [m]	10120 [ft] 3084 [m]	36°13.029' N	115°02.038' W	

ATIS	NELLIS GROUND	NELLIS TOWER	NELLIS CONTROL	TACAN	ILS RWY 21L	NELLIS EAST	NELLIS WEST
270.100 MHz	275.800 121.800	327.000 132.55	317.525	LSV 12X	109.10 Mhz	384.400	385.000

HELICOPTER ARR/DEP VAD-CHART | VALID 2014

NELLIS AFB (KLSV)
LAS VEGAS, NEVADA

ATIS
270.100
NELLIS GROUND
275.800
NELLIS TOWER
327.000
BLACKJACK
377.800

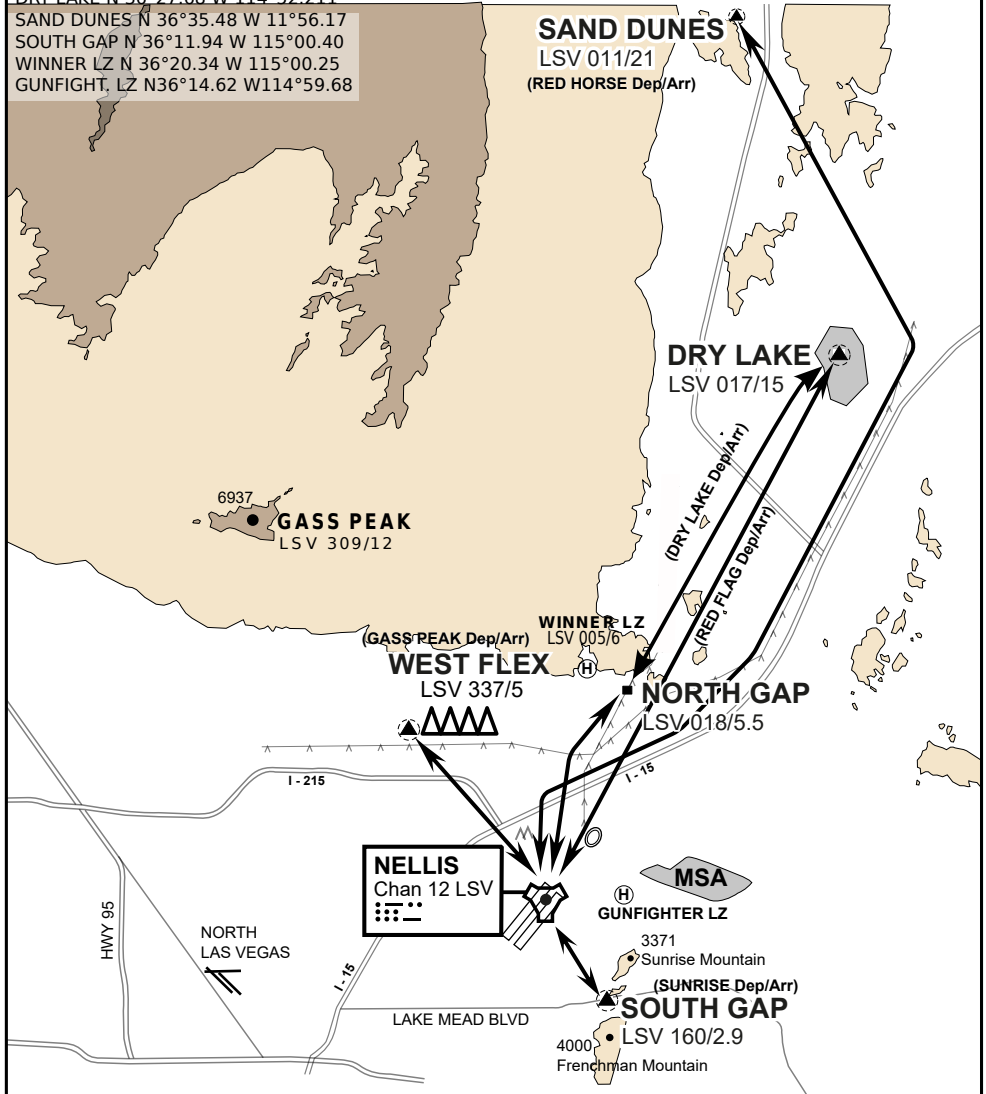
CAUTION: If unable to comply with restrictions advise ATC prior to departure.

VMC ONLY

if below WX Minima request SVFR



JOLLY PAD N 36°15.08 W 115°01.65
WEST FLEX N 36°18.64 W 115°08.00
NORTH GAP N 36°20.00 W 114°59.30
DRY LAKE N 36°27.68 W 114°52.211
SAND DUNES N 36°35.48 W 11°56.17
SOUTH GAP N 36°11.94 W 115°00.40
WINNER LZ N 36°20.34 W 115°00.25
GUNFIGHT, LZ N36°14.62 W114°59.68



vJABeG32NTRR NAV CHART

HELICOPTER ARRIVAL AND DEPARTURES ROUTES

v.110 22APR20

HELICOPTER ARR/DEP VAD-CHART | VALID 2014

NELLIS AFB (KLSV)
LAS VEGAS, NEVADA

ATIS
270.100
NELLIS GROUND
275.800
NELLIS TOWER
327.000
BLACKJACK
377.800

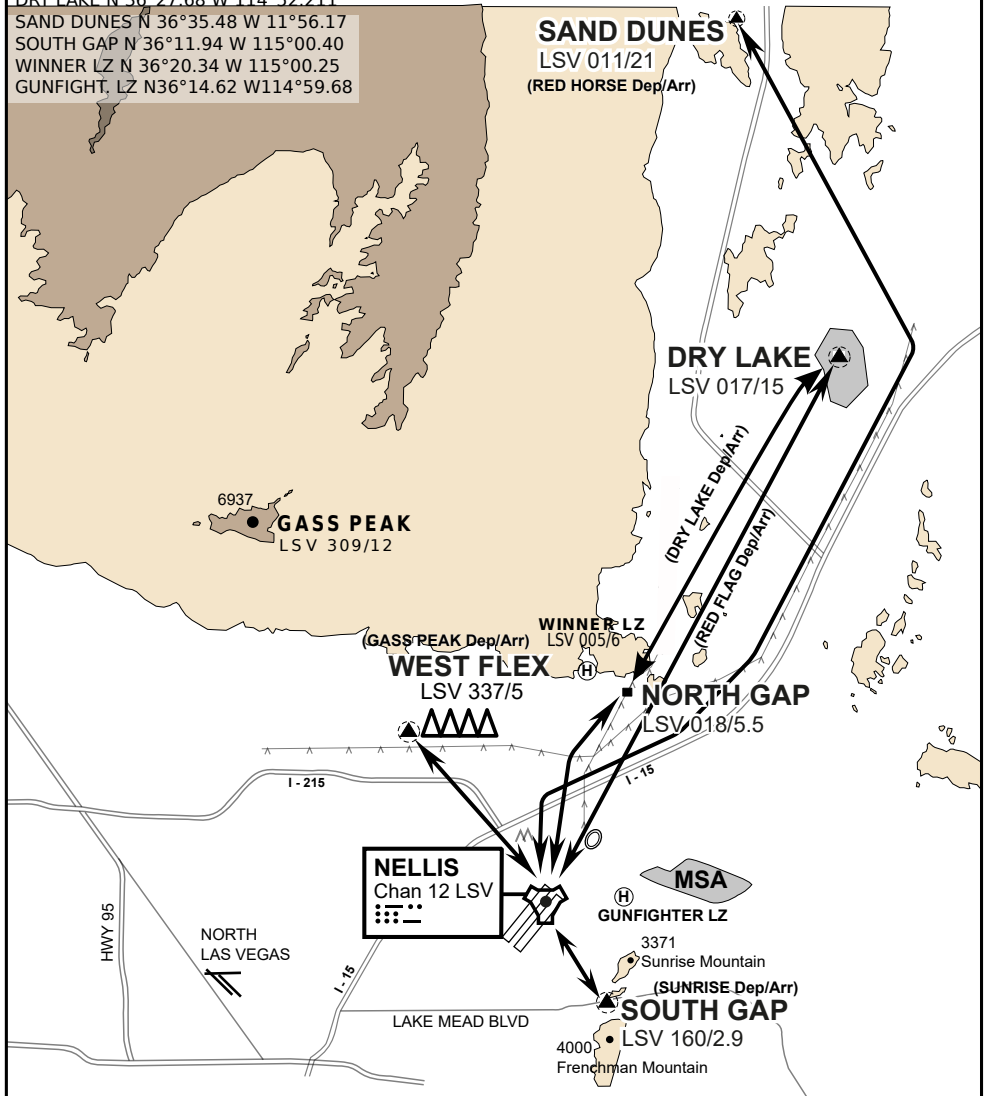
CAUTION: If unable to comply
with restrictions advise ATC
prior to departure.

VMC ONLY

if below WX Minima request SVFR



JOLLY PAD N 36°15.08 W 115°01.65
WEST FLEX N 36°18.64 W 115°08.00
NORTH GAP N 36°20.00 W 114°59.30
DRY LAKE N 36°27.68 W 114°52.211
SAND DUNES N 36°35.48 W 11°56.17
SOUTH GAP N 36°11.94 W 115°00.40
WINNER LZ N 36°20.34 W 115°00.25
GUNFIGHT, LZ N36°14.62 W114°59.68



vJABeG32NTRR NAV CHART

HELICOPTER ARRIVAL AND DEPARTURES ROUTES

v.110 22APR20