

**MISSION DATA CARD**

| OPORD          |                      | Callsign       |      | Mission        |      | Date/Time   |  |
|----------------|----------------------|----------------|------|----------------|------|-------------|--|
| 3386/2024      |                      | Snake 6        |      | Training       |      | 112000NOV24 |  |
| Task           | Formation Procedures |                |      |                |      | Freq        |  |
| AO             |                      |                |      |                |      | 133.5       |  |
| Departure      |                      |                |      | Recovery       |      |             |  |
| HELICOPTER DEP |                      |                |      | HELICOPTER ARR |      |             |  |
| #              | Callsign             | Pilot          | IFF  | TCN            | LSR  | NET         |  |
| -1             | Snake 6-1            | Mütze          | 4461 | 1Y             | 1391 |             |  |
| -2             | Snake 6-2            | Hudson/Remotex | 4462 | 64Y            | 1392 |             |  |
| -3             | Snake 6-3            | Warblade       | 4463 | 64X            | 1393 |             |  |
| -4             | Snake 6-4            | Laud           | 4464 | 1X             | 1394 |             |  |

**LOADOUT**

|     |           |      |          |
|-----|-----------|------|----------|
| A/A |           | GUN  | 25% HEDP |
| A/G | 2xAGM114K | CHF  | 30       |
| POD |           | FLR  | 60       |
| TKS | FT230     | FUEL | 100%     |

**TOLD**

|      |         |        |       |       |      |
|------|---------|--------|-------|-------|------|
|      | Takeoff | Target | Joker | Bingo | Land |
| FUEL | 4061    |        | 1000  | 750   |      |

**AIRBASES**

|     | Name       | TCN | ATIS  | GND   | TWR   | RWY | Elev | ILS   |
|-----|------------|-----|-------|-------|-------|-----|------|-------|
| Dep | Nellis AFB | 12X | 270.1 | 275.8 | 327.0 | 21L | 1850 | 109.1 |
| Arr | Nellis AFB | 12X | 270.1 | 275.8 | 327.0 | 21L | 1850 | 109.1 |

**FLIGHTPLAN**

| # | Name          | Navaid/Coords/DME                  | ALT | TOT |
|---|---------------|------------------------------------|-----|-----|
| 1 | Gunfighter LZ | N36 14.62 W114 59.68               |     |     |
| 2 | WEST FLEX     | LSV 307/6.5 (N36 18.64 W115 08)    |     |     |
| 3 | Winner LZ     | LSV 356/6 (N36 20.33 W115 00.25)   |     |     |
| 4 | NORTH GAP     | LSV 018/5.5 (N36 20 W114 59.30)    |     |     |
| 5 | DRY LAKE      | LSV 030/15 (N36 27.68 W114 52.21)  |     |     |
| 6 | SOUTH GAP     | LSV 160/2.9 (N36 11.94 W115 00.40) |     |     |

**COMMS**

| Radio | Usage         |
|-------|---------------|
| 1     | 133.5         |
| 2     | 327.0         |
| 3     | 35.35 / 35.75 |

## OTHER FLIGHTS

| Callsign    | Mission     | Airframe   | Freq                                     | TCN   | Grpld | Laser |
|-------------|-------------|------------|--|-------|-------|-------|
| Nazgul 6    | Training    | 4x F-15E   | 262.45                                   | 1/64  |       | 156X  |
| AO          | Range 66    | Task       | CAS Training                             |       |       |       |
| Warrior     | Training    | 2x Ground  | 126.5                                    | 1/64  |       | 170X  |
| AO          |             | Task       | JTAC R66                                 |       |       |       |
| Edelweiss 1 | Training    | 4x F/A-18C | 264.15                                   | 12/75 | 1     | 171X  |
| AO          |             | Task       | Formation, Tac-Turns, AAR, Bomb Delivery |       |       |       |
| Edelweiss 2 | Training    | 2x F-16C   | 134.25                                   | 1/64  |       | 172X  |
| AO          | Range 61    | Task       | Gun Pattern Training                     |       |       |       |
| Raptor 1    | Training    | 4x F-16C   | 134.0                                    | 1/64  |       | 162X  |
| AO          | BVR Range Y | Task       | BVR Training                             |       |       |       |
| Edelweiss 6 | Training    | 4x A-10C   | 134.65                                   | 1/64  | 40    | 166X  |
| AO          |             | Task       | AAR                                      |       |       |       |
| Tiger 5     | Training    | 2x F/A-18C | 261.15                                   | 1/64  |       | 155X  |
| AO          | BVR X       | Task       | BVR X                                    |       |       |       |

**RADIO CHANNELS**

| #  | Freq    | Name                           |
|----|---------|--------------------------------|
| 1  |         | Flight/Squadron specific       |
| 2  | 289.4   | Nellis Clearance Delivery      |
| 3  | 275.8   | Nellis Ground                  |
| 4  | 327.0   | Nellis Tower                   |
| 5  | 385.4   | Nellis Approach/Departure West |
| 6  | 273.55  | Nellis Approach/Departure East |
| 7  | 317.525 | Nellis Control -- Sally        |
| 8  | 254.4   | Nellis Control-- Lee           |
| 9  | 305.6   | SOF Bullseye                   |
| 10 | 343.725 | EMERGENCY SINGLE FRQ           |
| 11 | 270.1   | Nellis ATIS                    |
| 12 | 360.625 | Creech AFB Tower               |
| 13 | 250.1   | HAVE QUICK 13                  |
| 14 | 251.1   | HAVE QUICK 14                  |
| 15 | 252.1   | HAVE QUICK 15                  |
| 16 | 377.8   | Blackjack                      |
| 17 | 265.0   | KC-135 AR-641A                 |
| 18 | 360.8   | KC-135MPRS AR-635              |
| 19 | 319.8   | KC-135MPRS AR-625              |
| 20 | 300.05  | KC-135 AR-231V                 |

**RAMROD**

|   |   |   |   |   |   |   |   |   |   |
|---|---|---|---|---|---|---|---|---|---|
| 0 | 1 | 2 | 3 | 4 | 5 | 6 | 7 | 8 | 9 |
| M | O | D | U | L | A | T | I | N | G |

**KTC 1400 C**

|   | 0    | 1   | 2   | 3  | 4  | 5   | 6  | 7  | 8  | 9  |
|---|------|-----|-----|----|----|-----|----|----|----|----|
| A | CJOI | XEF | TWK | NB | LV | PQY | MS | UA | DR | GH |
| B | KTWA | YIE | CGM | DP | LN | RHQ | SU | XV | FO | BJ |
| C | HBFK | ROS | WJP | NV | MT | XIC | UG | YE | QL | DA |
| D | ECAJ | LXN | VYU | GF | SM | OBK | QT | WR | DI | HP |
| E | MTNH | GWP | YOI | BR | QV | JKD | XE | SL | AF | UC |
| F | QKOX | TAR | PBI | EV | YC | DMU | HL | FW | SG | NJ |
| G | RVLG | TPX | MCS | HY | DA | UBO | KI | FJ | NW | QE |
| H | EXGU | TLC | DKN | AW | VI | FMY | RJ | OH | SB | QP |
| I | MRTH | BLG | YSA | FI | WO | DUX | QJ | CN | VK | EP |
| J | NOUS | KCX | LAI | PJ | BY | WHM | FQ | GV | TR | ED |
| K | JKCV | TUI | FNH | LB | WG | DPY | QS | ME | OR | XA |
| L | THQG | WND | BSE | IX | OC | VAJ | FU | RM | PL | KY |
| M | WCEQ | PIA | TRV | LB | HS | XJN | GK | MY | UD | OF |
| N | WXUK | JLR | GCH | AT | DQ | PNB | VI | OY | SM | EF |
| O | OXGQ | MJL | FPU | ST | CV | RWH | DY | NK | BE | IA |
| P | GQSE | JAL | VHW | NY | OP | BFT | KM | RD | CI | XU |
| Q | PNBC | WMV | UFE | KD | TI | XYL | AS | RO | QH | JG |
| R | JDLK | XAI | PYO | CG | QV | SMF | HU | BT | NR | WE |
| S | FBOI | UEM | WVN | XQ | DL | RAY | GT | CP | HS | JK |
| T | AJDW | VLR | IPQ | SM | YK | CXH | TG | NB | EU | OF |
| U | SADC | WMN | PYB | LX | IE | HOF | GU | QR | TJ | KV |
| V | MIYS | EVK | NJL | HD | WO | PAG | QT | UX | BC | FR |
| W | RLUQ | IWY | BDO | SN | PK | TJM | GA | VC | XE | FH |
| X | RYUJ | GXI | FLB | AM | PV | KNH | EC | SD | TQ | OW |
| Y | UWBX | EHT | LMS | YK | OA | JFG | PQ | NR | CD | VI |

**NAVAIDS**

| <b>Id</b> | <b>Name</b>   | <b>Channel</b> | <b>Position</b>    | <b>Elevation</b> |
|-----------|---------------|----------------|--------------------|------------------|
| BCE       | Bryce Canyon  | 75             | N3741.35 W11218.23 | 9040             |
| BIH       | Bishop        | 33             | N3722.62 W11821.99 | 4114             |
| BLD       | Boulder       | 114            | N3559.75 W11451.82 | 3650             |
| BTY       | Beatty        | 94             | N3648.54 W11644.86 | 2925             |
| CDC       | Cedar City    | 120            | N3747.24 W11304.90 | 5463             |
| DAG       | Daggett       | 79             | N3457.75 W11634.69 | 1760             |
| EED       | Needles       | 99             | N3445.96 W11428.43 | 650              |
| GFS       | Goffs         | 91             | N3507.87 W11510.59 | 4019             |
| GRL       | Groom Lake    | 18             | N3713.91 W11548.16 | 4475             |
| HEC       | Hector        | 74             | N3447.83 W11627.78 | 1854             |
| ILC       | Wilson Creek  | 110            | N3815.02 W11423.65 | 9318             |
| INS       | Creech AFB    | 87             | N3635.20 W11540.12 | 3101             |
| LAS       | McCarran Intl | 116            | N3604.78 W11509.59 | 2142             |
| LSV       | Nellis        | 12             | N3614.68 W11501.50 | 1864             |
| MLF       | Milford       | 58             | N3821.62 W11300.79 | 4977             |
| MMM       | Mormon Mesa   | 90             | N3646.16 W11416.65 | 2120             |
| MVA       | Mina          | 98             | N3833.92 W11801.97 | 7860             |
| OAL       | Coale Dale    | 124            | N3800.20 W11746.23 | 4800             |
| PGS       | Peach Springs | 57             | N3537.48 W11332.67 | 4754             |
| TPH       | Tonopah Muni  | 119            | N3801.84 W11702.01 | 5330             |
| TQQ       | Silverbow     | 77             | N3748.00 W11647.00 | 5500             |
| UTI       | St George     | 23             | N3705.29 W11335.53 | 2871             |



RWY 3L-21R  
 PCN 46 R/C/W/T  
 RWY 3R-21L  
 PCN 51 R/C/W/T  
 2017

| PAR | RWY | CAT     | MINIMA                       |       | ARP                             | ELEV                 | Scale 1:35'500                  |  |
|-----|-----|---------|------------------------------|-------|---------------------------------|----------------------|---------------------------------|--|
|     | 21L | A B D E | 2057 - 0.8 200 (200-0.8/1.6) | GS 3° | 36° 14.060° N<br>115° 01.058° W | 1857 [ft]<br>566 [m] | 0 300 600 900 1200 1500 [m]     |  |
|     | 3R  | A B D E | 2057 - 0.8 200 (200-0.8/1.6) | GS 3° |                                 |                      | 0 1000 2000 3000 4000 5000 [ft] |  |
| SRA | 21R | A C D E | 2257 - 1.2 350 (350-1.2/1.6) |       |                                 |                      |                                 |  |
|     | 3L  | A C D E | 2257 - 1.2 350 (350-1.2/1.6) |       |                                 |                      |                                 |  |

| RWY | TORA                | TODA                | ASDA                | LDA                 | PSN          | THR           | ALS |
|-----|---------------------|---------------------|---------------------|---------------------|--------------|---------------|-----|
| 21L | 10051 [ft] 3063 [m] | 11051 [ft] 3368 [m] | 11051 [ft] 3368 [m] | 10051 [ft] 3063 [m] | 36°14.043' N | 115°01.018' W | ⊕   |
| 3R  | 10120 [ft] 3084 [m] | 11120 [ft] 3398 [m] | 11120 [ft] 3398 [m] | 10120 [ft] 3084 [m] | 36°13.029' N | 115°02.038' W |     |
|     |                     |                     |                     |                     |              |               |     |
|     |                     |                     |                     |                     |              |               |     |

| ATIS        | NELLIS GROUND     | NELLIS TOWER     | NELLIS CONTROL | TACAN   | ILS RWY 21L | NELLIS EAST | NELLIS WEST |
|-------------|-------------------|------------------|----------------|---------|-------------|-------------|-------------|
| 270.100 MHz | 275.800   121.800 | 327.000   132.55 | 317.525        | LSV 12X | 109.10 Mhz  | 384.400     | 385.000     |

# HELICOPTER ARR/DEP VAD-CHART | VALID 2014

**NELLIS AFB (KLSV)**  
LAS VEGAS, NEVADA

ATIS  
270.100  
NELLIS GROUND  
275.800  
NELLIS TOWER  
327.000  
BLACKJACK  
377.800

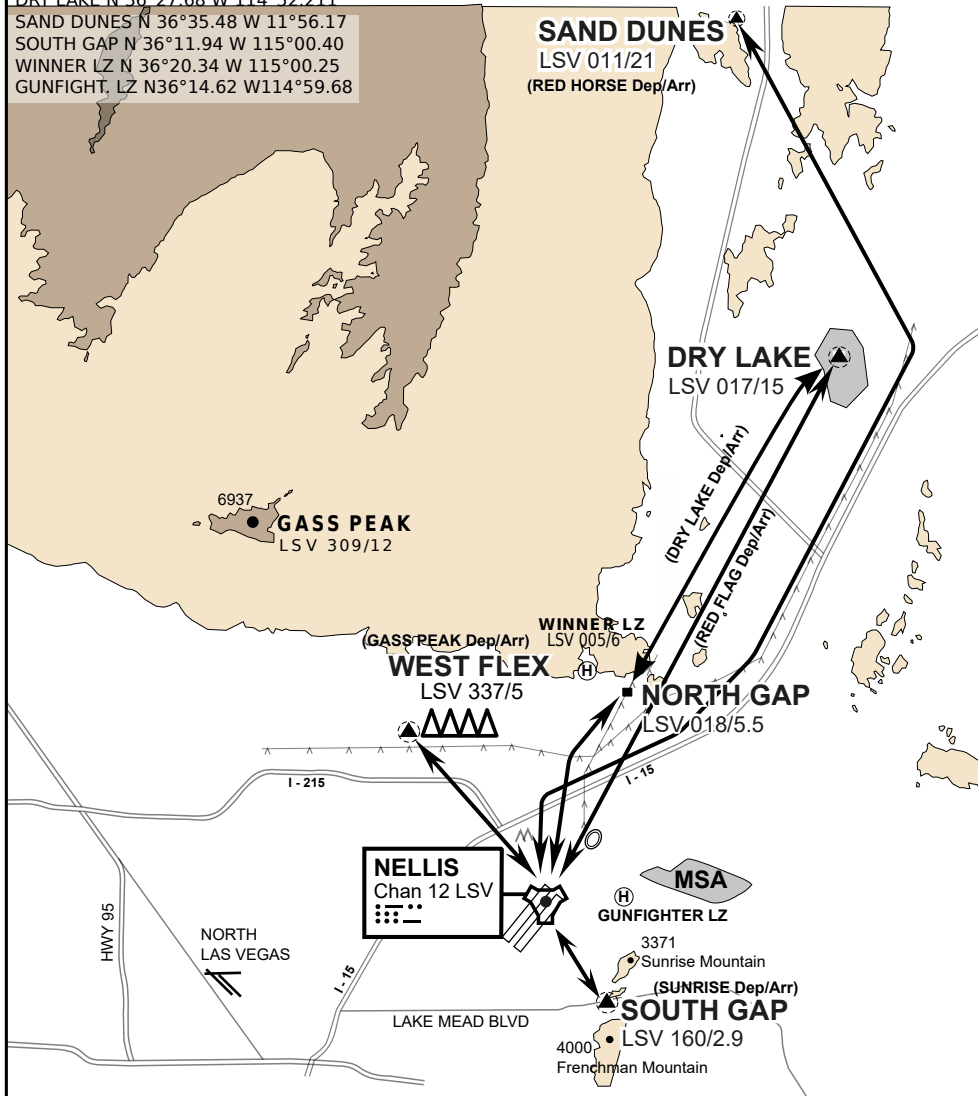
CAUTION: If unable to comply  
with restrictions advise ATC  
prior to departure.

## VMC ONLY

if below WX Minima request SVFR



JOLLY PAD N 36°15.08 W 115°01.65  
WEST FLEX N 36°18.64 W 115°08.00  
NORTH GAP N 36°20.00 W 114°59.30  
DRY LAKE N 36°27.68 W 114°52.211  
SAND DUNES N 36°35.48 W 11°56.17  
SOUTH GAP N 36°11.94 W 115°00.40  
WINNER LZ N 36°20.34 W 115°00.25  
GUNFIGHT, LZ N36°14.62 W114°59.68



vJABeG32NTRR NAV CHART

## HELICOPTER ARRIVAL AND DEPARTURES ROUTES

v.110 22APR20



# HELICOPTER ARR/DEP VAD-CHART | VALID 2014

**NELLIS AFB (KLSV)**  
LAS VEGAS, NEVADA

ATIS  
270.100  
NELLIS GROUND  
275.800  
NELLIS TOWER  
327.000  
BLACKJACK  
377.800

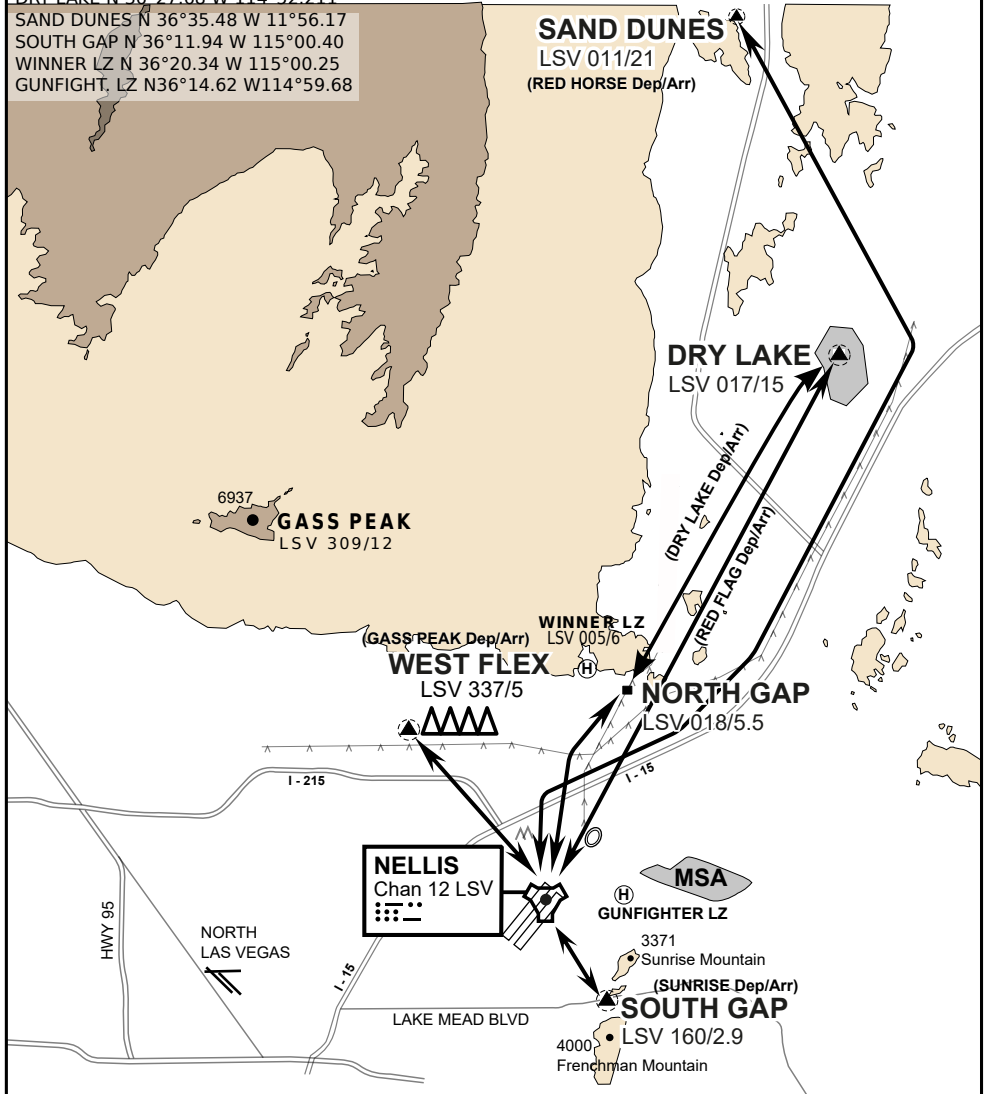
CAUTION: If unable to comply  
with restrictions advise ATC  
prior to departure.

## VMC ONLY

if below WX Minima request SVFR



JOLLY PAD N 36°15.08 W 115°01.65  
WEST FLEX N 36°18.64 W 115°08.00  
NORTH GAP N 36°20.00 W 114°59.30  
DRY LAKE N 36°27.68 W 114°52.211  
SAND DUNES N 36°35.48 W 11°56.17  
SOUTH GAP N 36°11.94 W 115°00.40  
WINNER LZ N 36°20.34 W 115°00.25  
GUNFIGHT, LZ N36°14.62 W114°59.68



vJABeG32NTRR NAV CHART

## HELICOPTER ARRIVAL AND DEPARTURES ROUTES

v.110 22APR20