

**MISSION DATA CARD**

OPORD		Callsign		Mission		Date/Time		
3384/2024		Monster 1		Training		072000NOV24		
Task	MISSILE DEFENSE					Freq		
AO	R61 / GROOM LAKE					132.15		
Departure				Recovery				
DREAM FOUR				HI-TACAN Y RWY 21L				
#	Callsign		Pilot		IFF	TCN	LSR	NET
-1	Monster 1-1		addiks		1411	1Y	1611	21/01
-2	Monster 1-2		Toolface		1412	64Y	1612	21/02

**LOADOUT**

A/A	2xA9L				GUN	100% CM	
A/G	7M282L				CHF	240	
POD	A184L, TGP				FLR	240	
TKS					FUEL	70%	

**TOLD**

	Takeoff	Target	Joker	Bingo	Land
FUEL	7760				

**AIRBASES**

	Name	TCN	ATIS	GND	TWR	RWY	Elev	ILS
Dep	Nellis AFB	12X	270.1	275.8	327.0	21L	1850	109.1
Arr	Nellis AFB	12X	270.1	275.8	327.0	21L	1850	109.1
Div	Creech AFB	87X	290.45	275.8	360.6			

**FLIGHTPLAN**

#	Name	Navaid/Coords/DME	ALT	TOT
1	MINTT	LSV 339/28 LAS 351/38 (N36 42.740 W115 06.290)	17000	
2	JUNNO	BLD 346/44 (N36 43.800 W114 52.770)	17000	
3	DREAM	LAS 354/66 BLD 342/71 (N37 10.340 W114 59.530)	17000	
4	Groom Lake	INS 339/42 (N37 16.500 W115 48)		
5	ARCOE	LSV 357/30 (N36 44.260 W114 55.020)	15000	
6	HOKUM	N36 27.570 W114 59.262	8800	
7	HULPU	N36 24.346 W114 50.729	5300	
8	JENAR	N36 19.887 W114 55.708	4400	
9	JOGEV	N36 17.506 W114 58.360	3300	
10	WILIE	N36 16.390 W114 59.602	2540	
11	Nellis	N36 14.680 W115 01.500		

**COMMS**

Radio	Usage
1	132.15
2	11 - 3 - 4 - 16 - 11 - 4 - 3

## NOTES

Ziel des Fluges: Üben der Counter-Measures.

Abflug: DREAM-4 zu DREAM über MINTT oder JUNNO je nach aktiver Runway.

Bei DREAM Split in Elements, dann gegenseitiger Beschuss mit AIM-9 (mit Ansage "Fox-2") und Abwehr mit Flares.

Danach zu Groom Lake (einzige SAM in NTTR) und Missile-Defense / Chaff-Einsatz üben.

**ACHTUNG:** Da Nacht ist, kann der Boden zur Gefahr werden.

Range-Exit nach Osten via DREAM.

Zuletzt Aufteilung in Single-Ship und einzeln mit etwas Abstand RTB IFR via HI-TACAN Y Runway 21L, via ARCOE.

## OTHER FLIGHTS

Callsign	Mission	Airframe	Freq	TCN	Grpld	Laser
Nazgul 6	Training	4x F-15E	262.45	1/64		156X
AO	Range 66	Task	CAS Training			
Edelweiss 2	Training	2x F-16C	134.5	16/79		171X
AO		Task	IFR Training			
Edelweiss 4	Training	4x F/A-18C	264.45	12/75		174X
AO		Task	IFR-Training			
Edelweiss 1	Training	4x F/A-18C	264.15	1/64		171X
AO		Task				
Snake 6	Training	4x AH-64D	133.5	1/64		139X
AO		Task	CPG Training			

**RADIO CHANNELS**

#	Freq	Name
1		Flight/Squadron specific
2	289.4	Nellis Clearance Delivery
3	275.8	Nellis Ground
4	327.0	Nellis Tower
5	385.4	Nellis Approach/Departure West
6	273.55	Nellis Approach/Departure East
7	317.525	Nellis Control -- Sally
8	254.4	Nellis Control-- Lee
9	305.6	SOF Bullseye
10	343.725	EMERGENCY SINGLE FRQ
11	270.1	Nellis ATIS
12	360.625	Creech AFB Tower
13	250.1	HAVE QUICK 13
14	251.1	HAVE QUICK 14
15	252.1	HAVE QUICK 15
16	377.8	Blackjack
17	265.0	KC-135 AR-641A
18	360.8	KC-135MPRS AR-635
19	319.8	KC-135MPRS AR-625
20	300.05	KC-135 AR-231V

**RAMROD**

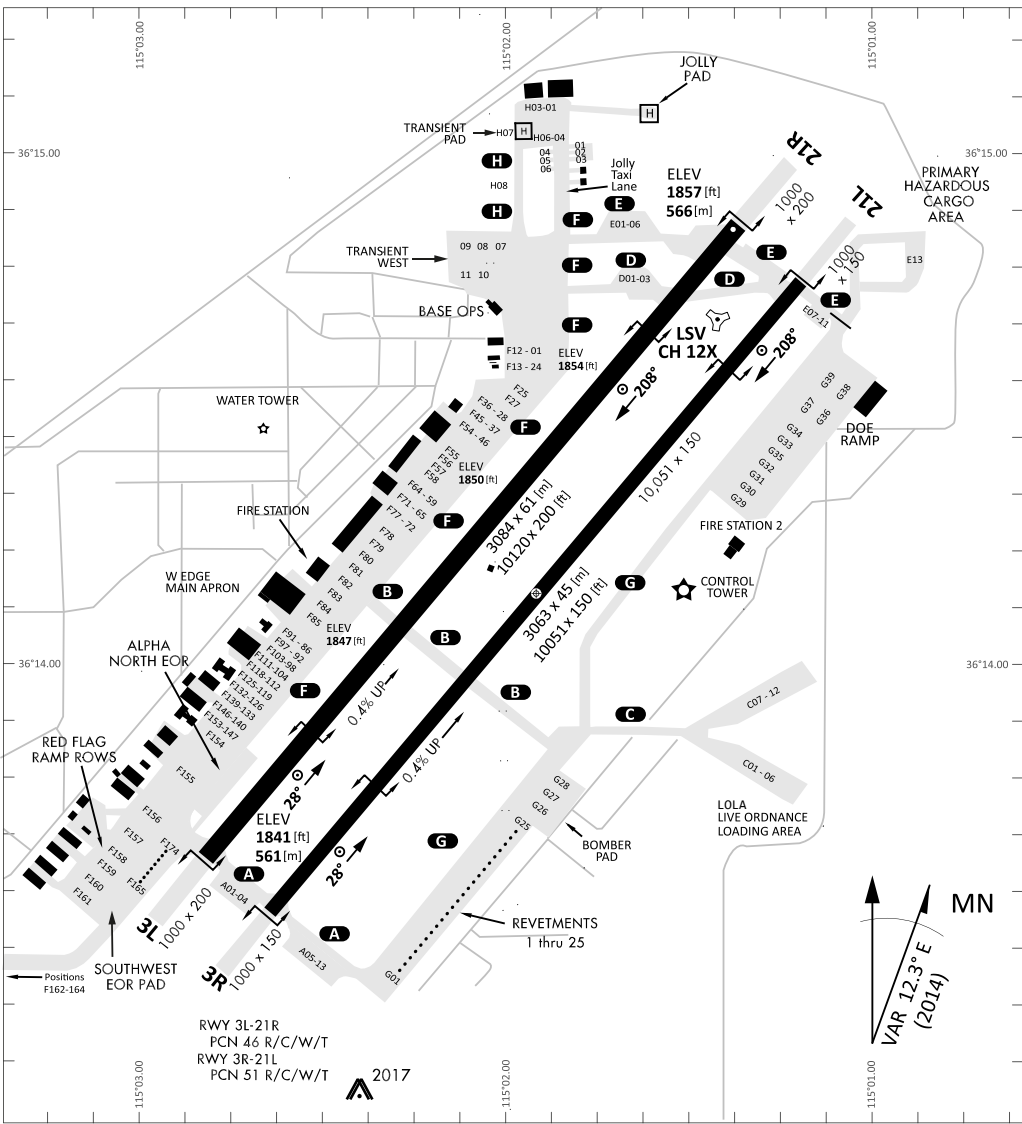
0	1	2	3	4	5	6	7	8	9
D	I	S	C	O	U	R	A	G	E

**KTC 1400 C**

	0	1	2	3	4	5	6	7	8	9
A	OGUH	QBI	SDY	VF	RJ	AMW	LP	KX	CT	NE
B	OGUJ	VKL	PNM	ED	CH	FAR	XY	QI	TS	WB
C	FBWP	CSG	AVL	RY	HK	MXE	JO	DU	IN	TQ
D	PHLT	NYX	AJR	QO	VS	KIU	WM	CE	DG	BF
E	OPTQ	BHJ	XMN	GS	CY	UEI	KA	WL	FR	DV
F	ELVY	BJS	COI	PG	XK	TUM	WH	NA	FR	DQ
G	GYIO	ADP	TQS	EH	KV	WMX	NF	LB	RC	JU
H	GWPR	CXN	DEV	MK	IO	SUT	HQ	YF	LB	AJ
I	NGYF	SLX	RAE	WK	OC	VQD	MU	TH	JP	BI
J	CDEY	SHI	KUN	PQ	FT	XGW	VL	MB	OJ	AR
K	VNEL	KQH	TMJ	PB	GA	IUX	YD	SO	FR	WC
L	TPKN	XGC	LQR	WJ	BO	IYA	DF	VE	MS	UH
M	HNVA	GDJ	MCS	WY	EX	UBO	FI	LP	TR	QK
N	FYTA	GEJ	XQC	VK	IB	OSP	LN	WH	DU	MR
O	EPSV	MJG	YKI	BF	TD	ROX	CH	QL	NA	UW
P	BIAF	VHM	QYE	CP	JN	LRT	OK	SW	XG	DU
Q	FCKW	TDG	VEJ	LR	OX	IPU	HM	YB	AQ	NS
R	TELV	SQN	BXU	IF	CJ	GHD	OY	PW	MR	AK
S	NRKV	ISD	BCA	OT	HG	XPF	WM	UY	LQ	EJ
T	KULW	HOX	TIP	BG	CY	JQF	EA	NV	SD	MR
U	HOCU	XLJ	MEK	WR	FP	SGI	QD	NA	VB	YT
V	EWJA	THM	RBI	SP	LK	FQV	UN	OG	XC	DY
W	OQSF	IAP	HCL	BU	KM	YTW	JN	VE	DR	XG
X	VURQ	HSW	JAT	EF	PK	DCI	XG	OL	MB	NY
Y	UNSB	MWE	ICY	VX	TK	DHG	RO	FL	AJ	QP

**NAVAIDS**

<b>Id</b>	<b>Name</b>	<b>Channel</b>	<b>Position</b>	<b>Elevation</b>
BCE	Bryce Canyon	75	N3741.35 W11218.23	9040
BIH	Bishop	33	N3722.62 W11821.99	4114
BLD	Boulder	114	N3559.75 W11451.82	3650
BTY	Beatty	94	N3648.54 W11644.86	2925
CDC	Cedar City	120	N3747.24 W11304.90	5463
DAG	Daggett	79	N3457.75 W11634.69	1760
EED	Needles	99	N3445.96 W11428.43	650
GFS	Goffs	91	N3507.87 W11510.59	4019
GRL	Groom Lake	18	N3713.91 W11548.16	4475
HEC	Hector	74	N3447.83 W11627.78	1854
ILC	Wilson Creek	110	N3815.02 W11423.65	9318
INS	Creech AFB	87	N3635.20 W11540.12	3101
LAS	McCarran Intl	116	N3604.78 W11509.59	2142
LSV	Nellis	12	N3614.68 W11501.50	1864
MLF	Milford	58	N3821.62 W11300.79	4977
MMM	Mormon Mesa	90	N3646.16 W11416.65	2120
MVA	Mina	98	N3833.92 W11801.97	7860
OAL	Coale Dale	124	N3800.20 W11746.23	4800
PGS	Peach Springs	57	N3537.48 W11332.67	4754
TPH	Tonopah Muni	119	N3801.84 W11702.01	5330
TQQ	Silverbow	77	N3748.00 W11647.00	5500
UTI	St George	23	N3705.29 W11335.53	2871



PAR	RWY	CAT	MINIMA	ARP	ELEV	Scale 1:35'500
	21L	A B D E	2057 - 0.8 200 (200-0.8/1.6) GS 3°	36° 14.060° N 115° 01.058° W	1857 [ft] 566 [m]	0 300 600 900 1200 1500 [m]
	3R	A B D E	2057 - 0.8 200 (200-0.8/1.6) GS 3°			0 1000 2000 3000 4000 5000 [ft]
SRA	21R	A C D E	2257 - 1.2 350 (350-1.2/1.6)			
	3L	A C D E	2257 - 1.2 350 (350-1.2/1.6)			

RWY	TORA	TODA	ASDA	LDA	PSN	THR	ALS
21L	10051 [ft] 3063 [m]	11051 [ft] 3368 [m]	11051 [ft] 3368 [m]	10051 [ft] 3063 [m]	36°14.043' N	115°01.018' W	⊕
3R	10120 [ft] 3084 [m]	11120 [ft] 3398 [m]	11120 [ft] 3398 [m]	10120 [ft] 3084 [m]	36°13.029' N	115°02.038' W	

ATIS	NELLIS GROUND	NELLIS TOWER	NELLIS CONTROL	TACAN	ILS RWY 21L	NELLIS EAST	NELLIS WEST
270.100 MHz	275.800   121.800	327.000   132.55	317.525	LSV 12X	109.10 Mhz	384.400	385.000



# DREAM FOUR DEPARTURE DREAM4 | VALID 2014

**NELLIS AFB (KLSV)**  
LAS VEGAS, NEVADA

ATIS  
270.100  
NELLIS GROUND  
275.800  
NELLIS TOWER  
327.000  
NELLIS CONTROL  
317.525  
NELLIS DEP/APP EAST  
384.400  
BLACKJACK  
377.800

**DREAM**  
N3710.34  
W11459.53

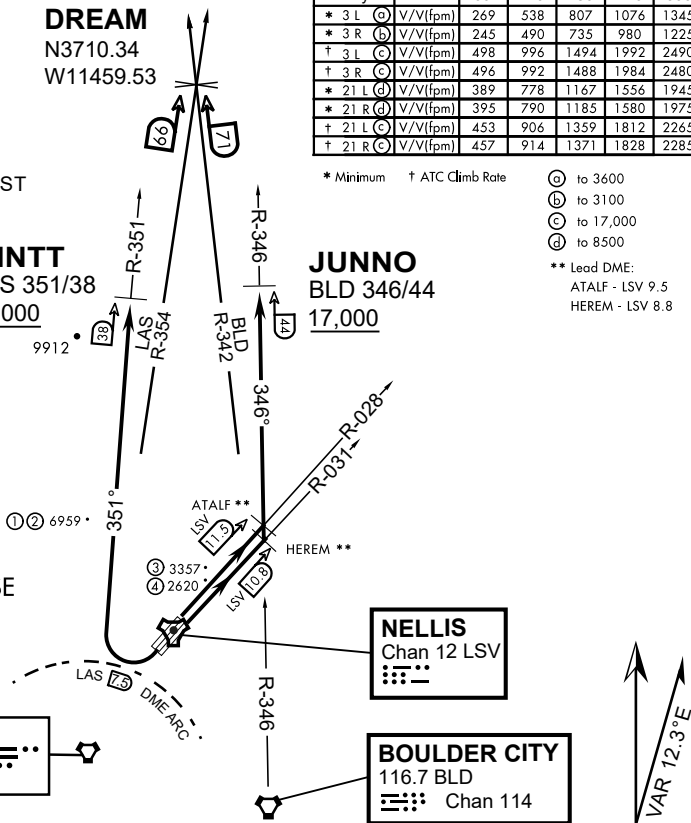
**MINTT**  
LAS 351/38  
17,000

Rwy	Knots	60	120	180	240	300	360
* 3 L (A)	V/Vl(fpm)	269	538	807	1076	1345	1614
* 3 R (B)	V/Vl(fpm)	245	490	735	980	1225	1470
† 3 L (C)	V/Vl(fpm)	498	996	1494	1992	2490	2988
† 3 R (C)	V/Vl(fpm)	496	992	1488	1984	2480	2976
* 21 L (D)	V/Vl(fpm)	389	778	1167	1556	1945	2334
* 21 R (D)	V/Vl(fpm)	395	790	1185	1580	1975	2370
† 21 L (C)	V/Vl(fpm)	453	906	1359	1812	2265	2718
† 21 R (C)	V/Vl(fpm)	457	914	1371	1828	2285	2742

\* Minimum † ATC Climb Rate

- (A) to 3600
  - (B) to 3100
  - (C) to 17,000
  - (D) to 8500
- \*\* Lead DME:  
ATALF - LSV 9.5  
HEREM - LSV 8.8

- ① 12.24 NM from Rwy 21R
- ② 12.40 NM from Rwy 21L
- ③ 5.67 NM from Rwy 3L
- ④ 5.85 NM from Rwy 3R



## NOT FOR CIVIL USE

CAUTION: If unable to comply with restrictions advise ATC prior to departure.

## DEPARTURE ROUTE DESCRIPTION

### TAKE-OFF RWY 3L

- Fly runway heading to intercept the LSV TACAN R-028 then direct ATALF, intercept the BLD VORTAC R-346 then direct JUNNO, cross JUNNO at or above 17,000, then via assigned route.

### TAKE-OFF RWY 3R

- Fly runway heading to intercept the LSV TACAN R-031 then direct HEREM, intercept the BLD VORTAC R-346 then direct JUNNO, cross JUNNO at or above 17,000, then via assigned route.

### TAKE-OFF RWY 21L/R

- Turn right to intercept LAS VORTAC R-351 outbound. Remain North of LAS 7.5 DME turning Northbound. Intercept LAS R-351 between 5000 and 6000, do not proceed West of LAS R-351. Cross MINTT at or above 17,000, then via assigned route.

NOISE ABATMENT PROCEDURES: Fly acc. Nellis Noise Abatement instructions

# DREAM FOUR DEPARTURE (DREAM4 • DREAM)

# HI-TACAN Y RWY 21L

TACAN LSV Chan 12	APCH CRS 210°	Rwy ldg 21L 10,051 TDZE 1865 Arprt Elev 1869	Rwy ldg 21R 10,120 TDZE 1869
-------------------	---------------	--	------------------------------

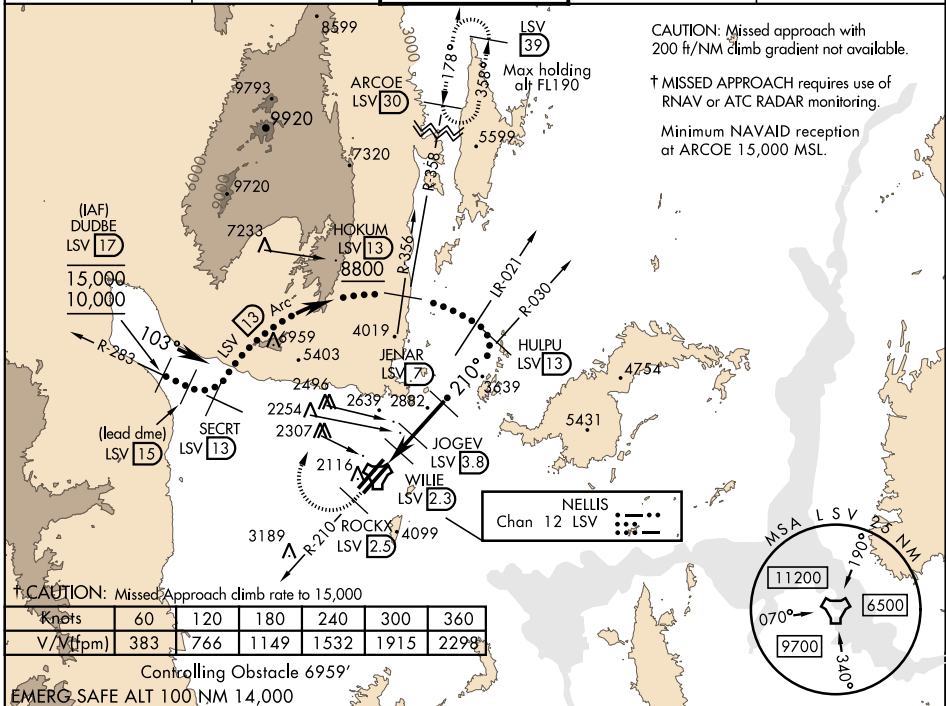
JAL-227 [USAF] NELLIS AFB (KLSV)

\* When ALS inop, increase CAT CDE vis to 1 3/4 miles.  
 \*\* Circling not authorized E of Rwy 3R-21L.



† MISSED APPROACH: Climb to 15,000, intercept LSV TACAN R-210 to 2.5 DME (ROCKX), then climbing right turn heading 020° to join LSV R-358 to ARCOE and hold, continue climb in hold to 15,000. Missed approach not for civil use.

ATIS 270.1	NELLIS APP CON 124.95 273.55	NELLIS TOWER 132.55 327.0	GND CON 121.8 275.8	CLNC DEL 120.9 289.4
------------	------------------------------	---------------------------	---------------------	----------------------



CAUTION: Missed approach with 200 ft/NM climb gradient not available.

† MISSED APPROACH requires use of RNAV or ATC RADAR monitoring.

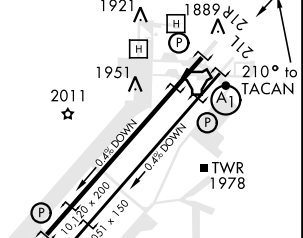
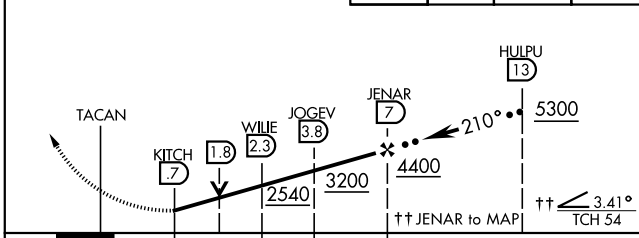
Minimum NAVAID reception at ARCOE 15,000 MSL.

† CAUTION: Missed Approach climb rate to 15,000

Knots	60	120	180	240	300	360
V/Vt (fpm)	383	766	1149	1532	1915	2298

Controlling Obstacle 6959'  
EMERG. SAFE ALT 100 NM 14,000

VGSJ and descent angles not coincident (VGSJ angle 3.00/TCH 54).	15,000 LSV R-210	ROCKX LSV 2.5	hdg 020°	ARCOE R-358 30	ELEV 1869	TDZE 21L 1865	TDZE 21R 1869
--	------------------	---------------	----------	----------------	-----------	---------------	---------------



CATEGORY	C	D	E
S-21L *	2460-1 1/4	595 (600-1 1/4)	
SIDESTEP 21R	2460-1	591 (600-1)	
CIRCLING **	2620-2 1/4 751 (800-2 1/4)	2840-3 971 (1000-3)	3040-3 1171 (1200-3)

HIRL all Rwy

# HI-TACAN Y RWY 21L

SW-4, 05 DEC 2019 to 02 JAN 2020

SW-4, 05 DEC 2019 to 02 JAN 2020



INDIAN SPRINGS, NEVADA

TACAN INS Chan 87	APCH CRS 065°	Rwy ldg TDZE 3133	9002 3113
		Arpt Elev 3113	

INDIAN SPRINGS AF AUX (KINS)

▼ \* MISSED APPROACH: Straight ahead to INS TACAN, intercept INS R-outbound, cross 17 DME at or above 9500, then direkt KSV TACAN 114

NELLIS CON

CREECH AFB TOWER  
118.30 60.60

GND CON

NOT FOR CIVIL USE

FOR USE UNDER BASIC VFR WEATHER MINIMUMS ONLY

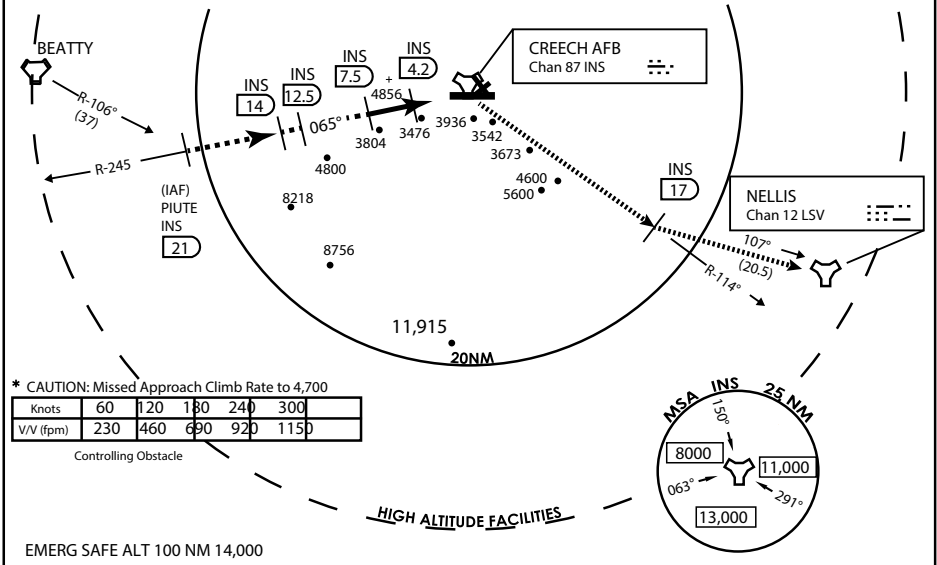
PILOT IS RESPONSIBLE FOR TERRAIN/OBSTACLE AVOIDANCE AND APPROPRIATE VFR CLOUD CLEARANCE FOR ALL

CAUTION: Descent gradients are greater than allowed under standard TERPS criteria and inbound course does not meet straight-in criteria

CAUTION: Final approach course crosses Runway centerline at MIDFIELD. Maneuvering left of course required prior to landing. Do not Maneuver farther north than the INS R- 258

Modified by viaBog 66 for use with DCS  
NOT FOR REAL LIFE NAVIGATION

Modified by viaBog 66 for use with DCS  
NOT FOR REAL LIFE NAVIGATION



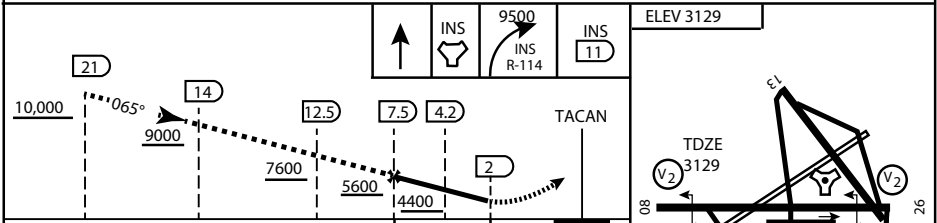
\* CAUTION: Missed Approach Climb Rate to 4,700

Knots	60	120	180	240	300
V/V (fpm)	230	460	690	920	1150

Controlling Obstacle

HIGH ALTITUDE FACILITIES

EMERG SAFE ALT 100 NM 14,000



CATEGORY	A	B	C	D	E
S-8	3760-1 1/2	627 (700-1 1/2)	3760-1 3/4 627 (700-1 3/4)	3760-2 627 (700-2)	3760-2 1/4 627 (700-2 1/4)
CIRCLING	NOT AUTHORIZED				

MIRL Rwy 8-26

CITY OF INDIAN, NEVADA

INDIAN SPRINGS AF AUX (KINS)

(FOR DAY VFR USE ONLY)



# AIRPORT DIAGRAM

476 VFG

CREECH AFB (KINS)  
INDIAN SPRINGS, NEVADA

ATIS  
 122.5  
 CREECH TOWER  
 118.4 360.7 38.65  
 GND CON  
 118.3 275.8  
 CLNC DEL

FIELD  
 ELEV  
 3127

HOT  
 CARGO  
 PAD

VAR 12.5° E

WEST EOR

CONTROL  
 TOWER  
 BASE  
 OPS

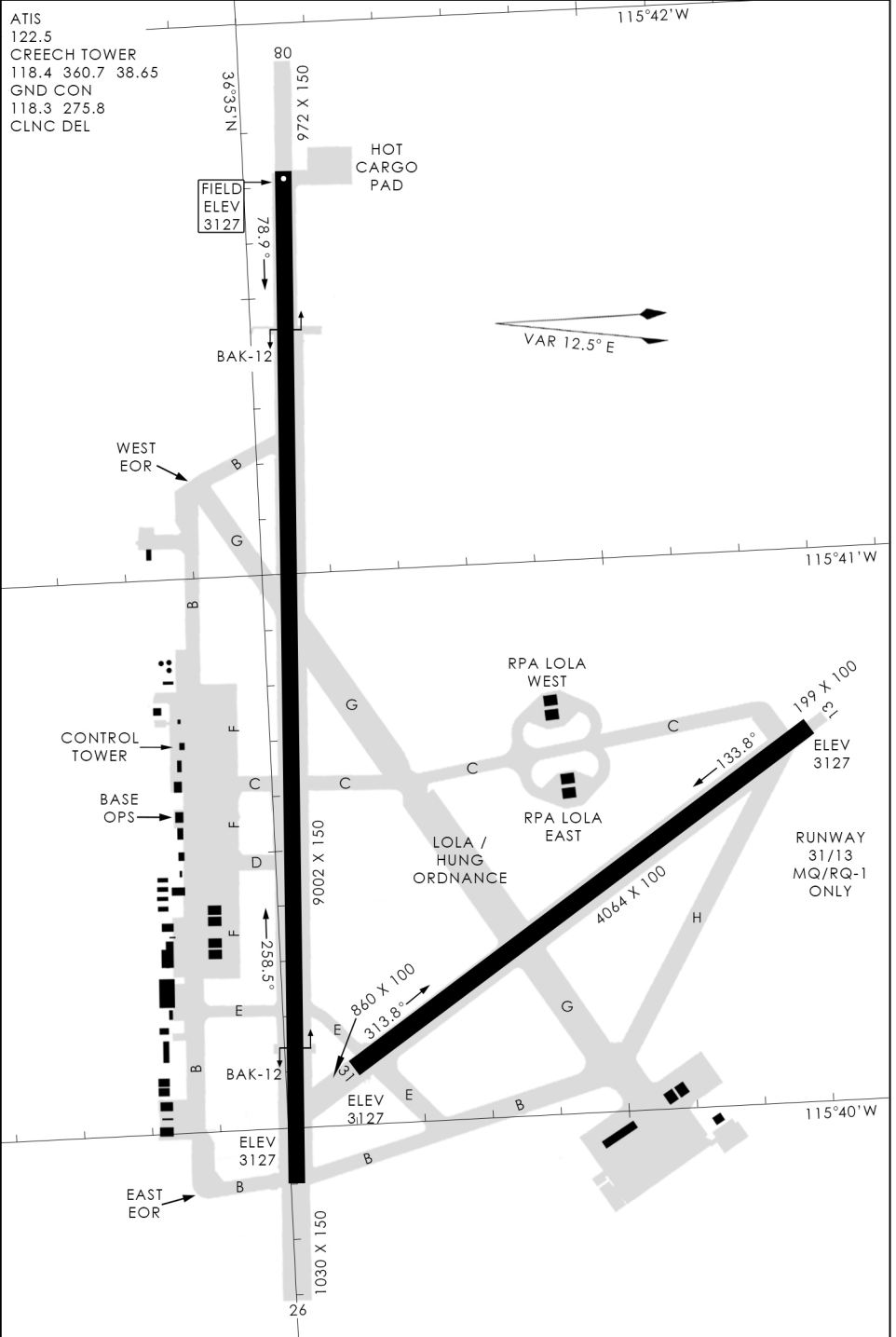
RPA LOLA WEST

RPA LOLA EAST

LOLA / HUNG ORDNANCE

RUNWAY  
 31/13  
 MQ/RQ-1  
 ONLY

EAST EOR



476 VFG JAN 2019

476 VFG JAN 2019

# AIRPORT DIAGRAM

INDIAN SPRINGS, NEVADA  
CREECH AFB (KINS)